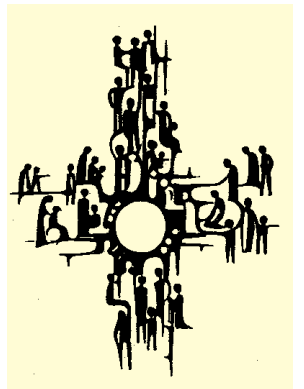


# OCTOBER 2017



**UNITED IN CHRIST IN OCTOBER  
CELEBRATING OUR UNITY,  
OUR HISTORY AND THE ONGOING LIFE  
AND MINISTRY OF OUR CHURCH!**

During October you are invited to be united with Christians around the globe on **World Communion Sunday on October 1st**. This is a wonderful Sunday to be reminded that we are just one gathering of Christians, surrounded by Christians around the world who are also followers of Jesus. As we break the bread and share the cup together we will remember and pray for our brothers and sisters around the globe. We will once again receive communion by Intinction and then circle the sanctuary to celebrate our connection to the world.



Beginning **Sunday October 15th and Tuesday Octo-**

**ber 24 the Class on the Reformation Begins**

We will explore our history as part of a Reformed denomination as we celebrate the 500th Anniversary of the beginning of the Reformation on Oct. 31, 1517. On that date Martin Luther posted 95 Theses, or beliefs, challenging the church to change and focus first on Jesus Christ. We will learn about Luther and other Reformers. Read more about the class on page 5.



**Reformation Day**

**On Sunday October 29th** we will both **Celebrate the Reformation** and join with our Family of Faith as we make our Stewardship Pledges for 2018 on **October 29th for Consecration Sunday**.

In these education and worship events in the life of our church we see the gifts of our Christian life together. The reminder that the journey of faith is not something we do alone, but in community. In the love of Jesus Christ we are united to our brothers and sisters around the globe, the reformers and changers of our faith life in the past and our brothers and sisters in the Family of Faith called into life and ministry at FPCEM. Please join us on these special Sundays, and the ones in between, as we unite our lives, our worship, our giving, and our service with the Family of God. Let us gather in the name of Jesus, as we take up his call to proclaim his life-giving love for all the world and for each one of us.

Pastor Becky

### **CONSECRATION SUNDAY--OCTOBER 29TH**

**Definition of Consecration: To make Sacred, Holy**

**A DAY OF PLEDGING OUR GIFTS TO GOD FOR 2018**

**GIVING WITH JOY TO THE LIFE AND MINISTRY OF FPC**

On Consecration Sunday many things are going on all at the same time:

- Together we are recognizing all that God has given us: the gift of our lives, our families and friends, and our church home.
- We remember that we have been made stewards and caregivers of the time and money that is in our lives. God has entrusted us with so much.
- Individually, as couples, and as households we decide how we are going to say thank you to our God by giving to First Presbyterian Church in 2018.
- It is a time of recognizing again the importance of First Presbyterian in our lives. We are deciding to believe in the current and future ministries and missions of this congregation as we give.
- When we bring our giving pledges forward on the 29th we are consecrating them, or making them holy, by bringing our gifts forward to God.

Your Finance Commission and I want to encourage you to prayerfully listen for the ways that God is calling you to support the life and ministry of First Presby-

### **6 = Distressing**

Moderately strong pain. You think about your pain ALL the time, and give up many activities because of the pain.

### **7 = Unmanageable**

You are in pain all the time. The pain keeps you from doing most activities: unable to perform daily activities or maintain social relationships, interferes with sleep.

### **8 = Intense**

Your pain is so severe that it is hard to think of anything else. Physical activity and even talking takes great effort.

### **9 = Severe/Excruciating**

Your pain is all you can think about. I am unable to converse or move.

### **10 = Unspeakable**

Bedridden, unable to move. You require someone to take you to the Emergency Room to get help with your pain.

Laura Brown, RN

Parish Nurse

**October Sundays:** 1: 8:45-9:25 (Choir), and after worship

8: 8:45-9:55, and after worship

15: 8:45-9:25 (Choir), and after worship

29: 8:45-9:25 (choir), and after worship

**Just a note:** I will be out of town Sunday Oct. 8th right after church through Tuesday, Oct. 10th and also Friday, Oct. 20th through Sunday, Oct. 22nd.

My Parish Nurse is in the Choir now. Is she still accessible to consult with? Yes, she is! Laura is available to you on choir Sundays from 8:45 to 9:25 when the choir warms up, and then after worship. On Bell Sundays, Laura will be available before worship (8:45-9:55) and after Worship. Don't forget that Laura is available "on-call" during the week.



# **PARISH NURSE NEWS**

## **The Fifth Vital Sign**

I don't know about you, but I find the pain scale (the one the doctor asks you to rate your level of pain from 0 to 10) to be ambiguous at the very least, and down-right confusing at the most. And looking at those progressively sad "happy faces" doesn't help. Brought up with "keep a stiff upper lip", "grin and bear it", and "crying doesn't help" attitudes, I have difficulty evaluating my pain. And don't try to describe my pain based on my face (grin and bear it, remember?).

According to Joint Commission on Accreditation of Healthcare Organizations and the National Pharmaceutical Council, Inc. (December 2001), "a pain scale measures a patient's pain intensity or other features." Pain is an invisible symptom; your health care provider cannot climb into your skin to know what you are feeling. But through your description, he or she can make a more accurate diagnosis, and treat accordingly. There are at least 15 different types of pain scales, and are used for all stages of life, from preemies to seniors. Pain assessments are often regarded as "the 5th Vital Sign".

When talking with your health provider about your pain, be honest, without exaggerating, or trying to put on a brave face.

### **On a Scale of One to Ten     0 = No Pain**

#### **1 = Mild**

Pain is very mild and barely noticeable; most of the time you don't think about it.

#### **2 = Minor**

Pain is annoying, with occasional stronger twinges; you are only aware of the pain when you think about it.

#### **3 = Uncomfortable**

Pain is noticeable and distracting, but you can get used to it and adapt; you can ignore it most of the time.

#### **4 = Moderate**

You are constantly aware of your pain, but can continue with most activities.

#### **5 = Distracting**

Moderately strong pain. You think about your pain constantly, the pain can't be ignored for more than a few minutes. You are unable to do some of your activities because of the pain.

terian Church of East Moline. And even more important, how is God calling you to be a steward, a caregiver, of the gifts God has put into your life. It is a holy calling each one of us has been given, to love and serve the Lord our God with cheerful giving, and rejoicing in the gift of our lives, and our church life together. We have been richly blessed. How will you be a blessing to your church today, and the church we will become in the future?

With Rejoicing, Pastor Becky

## **WHERE IS PASTOR BECKY OCTOBER 16-23?**

I will be on a week of Study Leave at the Sinsinawa Mound Retreat Center in Wisconsin, just outside of Dubuque. This is the mother house for many Iowa Benedictine Sisters, so I will be able to join them for worship each day before breakfast and before supper. I love singing the Psalms with the Benedictines! The rest of the time I will be in refreshing, renewing Silence. I will be praying for you during these days and invite you to pray for me as I study, rest and refresh. If you are in need of pastoral care during this week, call Karol Ellison, Laura Brown or Cathy Runburg and they will get you in touch with the pastor on call.

### **FIRST PRESBYTERIAN CHURCH STAFF**

The Rev. Becky Sherwood	Pastor
Karol Ellison	Church Secretary
Laura Brown, R.N.	Parish Nurse
David Blakey	Choir Director
Gail Glockhoff-Long	Bell Choir Director
Linda Miller	Organist
Sarah Lack	Nursery Attendant
Cathy Dillon	Indoor Custodian
Marty Ellison	Outdoor Custodian

### **Please Keep Our Nursing Home and Homebound Members in Your Prayers**

Friendship Manor: Mary Glockhoff, Marynell Kirkwood, Mary Catherine Sneed;  
The Fountains: Dorothy Horton; Hope Creek: Viola Lyon; The Lighthouse of Sil-  
vis: Florence McCaulley; Park Vista: Carol Brewer, Lloyd Strohm; Personal Res-  
idences: Shirley Belanger, Kay Etzel, Ted and June Frels, Bev Warren

***Please remember in your prayers those who serve in the armed forces. May God bring comfort to them and their loved ones, until all are reunited in peace.*** Lance Corporal William (Billy) Betsworth, Bethel's grandson, is scheduled to be deployed in April 2017. Both Michael and Caleb Kassehin are in ROTC through the National Guard. Captain Kyle Curry, Minnesota Army National Guard

***Please keep our college students in your prayers, that they may know God's love and guidance:***

Edwige Barrigah—Quincy Univ., Ines Kassehin—Pharmacy School, Caleb Kassehin—Univ. of Iowa, Jack McNeil—DePaul University, Katey Maxwell & Lathan Reynolds—Black Hawk College. If you have a college/technical school student to add to this list please call the church office.

**Password for the current newsletter on our webpage  
firstpresbyem.com:**

Username: fpc Password: messenger



### **2ND FRIDAYS AT THE MOVIES *Fun, Food, Fellowship...And A Movie!* FRI. OCTOBER 13TH—6:30 PM—YOUTH ROOM**

*Through a confusion of scheduling ably executed by  
your pastor, we will watch September's Movie this month:*

#### **Waking Ned Devine**

This fun Irish comedy is about a man who wins the Irish National Lottery and then dies of the shock of winning. His small village tries to keep his death a secret...to get the winnings...in his name of course!

**PLEASE BRING** a movie munchie to share and join the fun! *We decide on  
the next month's movie at the end of the night, so bring your suggestions!*

***NEED A RIDE?*** Call Pastor Becky

### **JOIN US 2ND SATURDAYS TO CREATE PRAYER SHAWLS!**

**OCTOBER 14TH, 9:00 TO 11:00 A.M.**



**FIRST-TIMERS & BEGINNERS ALWAYS WELCOME!**

**WHAT DO I DO WHEN I TAKE A SHAWL? #1**

Please put your name and the number of shawls  
you've taken in the Prayer Shawl Book on the counter  
above the Shawls AND #2 Take one of the tags on the counter and at-  
tach it to the Prayer Shawl! **We would love to welcome some new peo-  
ple to this group,** the yarn is provided...we just need your knitting or  
crocheting fingers!

## **Presbyterian Women**

### **October 3rd**

We meet the 1st Tuesday of each month at 1:00 p.m.

Please join us on October 3rd.

If you would like a Study book, talk to Sandy Kirchhoff.

This Year's Study:

*Cloud of Witnesses--The Community of Christ in Hebrews*



## **PRESBY SENIORS**

**Presby Seniors will meet**

**OCTOBER 25TH at Noon.**

We meet on the 4th Wednesday of each month

at high NOON and *WELCOME*

*all who consider themselves "Seniors!"*

**at The Deerfield Inn Restaurant.**

2215 John Deere Road, East Moline

**Pastor Becky drives the church Minibus** to the luncheon each month.

If you would like a ride to the Lunch

**please contact the church office by Tuesday morning**

before the Wednesday lunch. *See YOU There!*

## **SUNDAY SCHOOL FOR ALL AGES!**

***"Continuing on the journey of faith."***

4 year olds through 12th Graders —Sunday School

**8:30 A.M.** Youth Choir for 4 years through 12 Graders  
in the Music Room

**8:45 A.M.** 4 year olds through 5th Graders

(3 year olds are welcome if a parent is with them for  
the class—nursery care for younger children)

6th to 12th Graders—Youth Room—with Darlos Stroud!



## **ADULTS--TAKING THE TWO HOUR CHALLENGE**

**Give a 2nd hour to God on Sunday Mornings**

*Adults*—Good News Bible Class by the Elevator —OR— Class with Pastor  
Becky in the Library

**The Good News Class**—Studying the Bible with the Presbyterian Church!

**The 2nd Floor Seeker's Class**—October 1st & 8th We'll be with the Good  
News Class. Then we will be in the Library, learning about the Reformation  
from October 15th to November 26th (no class Oct. 22nd) See below for de-  
tails!



## **ADULTS LEARNING TOGETHER!**

### **LEARNING ABOUT THE REFORMATION--AT THE 500TH ANNIVERSARY**

This class will meet on Sunday Mornings  
at 8:45 a.m. and Tuesday evenings at  
6:30 p.m. The cost for the book *The  
Protestant Reformation* will be \$5.00.  
Books will be available Sunday October  
8th...if they arrive earlier you will be noti-  
fied. Please read the first chapter before  
the first class. *Meeting dates are on the  
following page!*



Meeting dates for the Reformation Class:

Chapter One: Sunday Oct. 15th and Tuesday Oct. 24th

Chapter Two: Sunday October 29th and Tuesday Oct. 31st (we'll figure out a different date for this at our first class so you can go Trick or Treating.

Chapter Three: Sunday Nov. 5th and Tuesday Nov. 7th

Chapter Four: Sunday Nov. 12th and Tuesday Nov. 14th

Chapter Five: Sunday Nov. 19th and Tuesday Nov. 21st

Chapter Six: Sunday Nov. 26th and Tuesday Nov. 28th.



**SUNDAY OCTOBER 15TH—4:02 P.M.—**

**BONFIRE - TUBE STEAKS –  
SMORES - LOCK AND DAM  
ADVENTURES & MORE AT  
THE TYLER'S HOME!**

Bring a friend or two...and  
yourself of course... **SIGN UP  
ON MISSION CENTRAL BY**

**OCT. 8TH** and hop on the bus at 4:02 p.m. The Tyler's have invited us back for another great night around their bonfire! We'll eat, we'll play, we may even create! Come ready for a great night of Youth Group Adventures! We'll be back in the church parking lot at 7:47 p.m. Parents, I'll need a couple chaperones to join me—must be willing to play silly games and deal with possible pumpkin guts :)!!!



**SAVE THE DATE: NOVEMBER 5TH--YOUTH AND  
THEIR CHURCH FAMILY IN MISSION—Leaf Raking  
for our Members**

**DONE BY OUR FAMILIES, CHILDREN, YOUTH  
GROUP AND ADULTS!—**After Church to about 3:00  
p.m. We will drive you home. ***Please sign up on Mission  
Central by Oct. 29th*** if you, your family, your  
friends, or the person you sit by at church are going to  
join us. WE'LL SHARE PIZZA LUNCH AT CHURCH



**Koudzo & Essi Apetcho**

1035—51st Ave., Apt. 3C  
East Moline, IL 61244

**Mike Maxwell**

112 Woodhaven Circle  
Hattiesburg, MS 39402



**A Note from the Finance Commission:**

August Income	= \$ 8,371
August Expenses	= \$ 14,907
January-August Income	= \$125,624
January-August Expenses	= \$119,266

eating, playing kickball and volleyball and talking that some of us didn't leave the park until almost 3:00 p.m.

And the Bunco Bonanza truly was a Blast! A huge thank you to the Mission Commission, ably assisted by Fellowship and Outreach Commission. And special thanks to Karen Paytash who dreamed up this event and Dixie Volk who surpassed us all in collecting baskets and being Karen's right-hand woman! Plus a big thank you to all who donated for the raffle baskets, created baskets, and lent a hand where needed. The final figures are still being tallied, but all of us working together raised about \$3,000 for local mission in 2018. What a fun way to walk beside those in need in our community.

I am so thankful for each of you and the many ministries you do that are seen, and behind the scenes. Thank you, Pastor Becky

Thank  
you

AS WE WAIT FOR THE BUS, Please sign up for pizza choices! Once the bus is back we'll hop in and begin raking! Rain Date: Nov. 12th

**PLEASE BRING:**

1. Raking clothes (wear them to church or change after)
2. \$5 for pizza and pop.
3. Rakes, leaf blowers, or pick-up truck for hauling leaves to our ravine.
4. If you have extra leaf rakes, even if you can't join us, please put your name on them and leave them with us...so everyone can RAKE!

**CHURCH MEMBERS--DO YOU NEED YOUR  
LEAVES RAKED?**

**PLEASE CALL THE CHURCH OFFICE BY OCT. 29TH—WE  
WANT TO HELP YOU ON NOVEMBER 1ST!**





**FALL IS THE SEASON OF INVITING NEW PEOPLE TO SERVE AS ELDERS, DEACONS AND ON OUR VARIOUS COMMISSIONS FOR 2018**

In the next few weeks please prayerfully consider how you will answer when you receive a call to serve in the ministry life of our congregation, Already feeling called to join a commission or serve as an Elder or Deacon in 2018? Please talk to Elders Greg Bartleson or Paul Glockhoff, or Pastor Becky today!

**PREPARING FOR ALL-SAINTS' SUNDAY NOVEMBER 5TH**

**ADD YOUR LOVED ONES TO THE "REMEMBERING" BANNER IN THE HALL before Worship on Nov. 5th.** Add the names of those you've loved who've gone home to Heaven in the past years beginning October 22nd. This banner will then be processed in with the others.



**THANK YOU FOR CELEBRATING MY 15 YEARS OF MINISTRY WITH YOU!**

Dear Family of Faith,

You completely surprised me & touched my heart with your wonderful and unexpected surprise on Sunday Sept. 10th. Aneita's kind words moved me to tears, as you could see. Somehow I didn't hear her say the word "gift," and so thought she was handing me a card you had signed. Imagine my surprise when I got to my office after worship and opened the card to find another surprise, your ginormous monetary gift to me. I am overwhelmed by your kindness!

Oh dear friends, what joy to be your pastor and to have served God together these fifteen years. You all hold such an important place in my heart. I have spent over half of my ordained ministry with you; what a gathering of memories we have created as we have served God together. With great thanksgiving to God for our life and ministry together, Pastor Becky

Dear Members of First Presbyterian Church,

Thank you for your gift of \$290 to Bethany for Children & Families! Your gift helps connect infants with their "forever families", provides safe homes for children who are victims of abuse or neglect, guides struggling families to stay together safely and access community resources, teaches social skills during the after-school hours to youth with behavioral disorders, and aids homeless teens and families in housing.

Sincerely, Bill Steinhauser President/CEO

**A THANK YOU TO SO MANY**

Wow! What a month this has been with the Fall Picnic on September 10th and the Bunco Bonanza Blast on September 24th. These events happened because so many of you helped create them. Thank you to Fellowship and Outreach for hosting the Picnic and creating a wonderful day of fellowship and fun at Mitchell Park. Special thanks to Ella Layer and Mary McNeil for coming early and setting up such a beautiful Celebration. We had so much fun playing,



## Buy Your Dining Tour Books Now!

The sale of dining tour books begins on October 1, 2017 and will continue until all 30 books are sold! Think now about possible Christmas presents, how you will spend the money you save by using the coupons and how much fun it will be to try out new restaurants. As you may know, the proceeds of the dining tour books help support our meal site endeavors and the price is still \$35.00. The new book includes "buy one, get one free" coupons for 144 different restaurants in the QCA. Your dining adventure can start as soon as you pick up your dining tour book and all coupons are good until October 31, 2018. Come to the library after the service this Sunday and purchase your new dining tour book. You can visit your favorite restaurant or have an opportunity to try a new restaurant and save money!



## The Village Inn Pie Card Sale is Coming in November!



Start planning your menus and selecting your gifts for the Thanksgiving and Christmas holidays! The Mission Commission will once again be selling Village Inn Pie Cards to raise money for local missions. The cards will be on sale Sunday, November 5 and Sunday, November 12. Last year we sold over 200! The pie cards make great gifts! Please talk to the friends, family, neighbors, and others who bought cards from you last year and start taking orders! And think of new people to ask. The cards must be paid for at the time they are delivered and checks should be made payable to FPCEM. Thanks for your help with this delicious fundraiser!

## Quarterly Mission Collection: GiGi's Playhouse

This quarter the Mission Commission is sponsoring a collection for GiGi's Playhouse. This non-profit is a one-of-a-kind achievement center for individuals with Down Syndrome, their families, and the community. GiGi's Playhouse offers more than 25 therapeutic and educational programs that advance literacy, math skills, motor skills and more; all of which are free of charge. It is located on 38<sup>th</sup> Street in Moline. GiGi's list of needs include:

- Postage stamps
- Mailing labels
- Rubber bands
- Cases of bottled water
- Ribbon
- Coffee
- Juice (non-perishable)
- Tissue paper
- Cellophane wraps
- Plastic storage totes
- Paper for their printer

This collection runs September through November. Please consider what you might be able to add to this collection.

## DINING TOUR BOOKS ARE COMING!

The sale of dining tour books will begin on October 1, 2017.

## Mission News

### AN IMPORTANT REMINDER FROM YOUR MISSION COMMISSION: THREE WAYS TO HELP! ON OUR 3RD SUNDAY OF THE MONTH MISSION—



The Mission Commission invites you to **#1**— bring food for the **Food Pantry**, and to **#2** — bring aluminum pop/beverage cans to support the **Children & Youth Going to Church Camp**. Please make sure pop cans are rinsed out, and **#3** — don't forget to take off the pop tabs (and other kinds of pull tabs too!) and bring them to support the **Ronald McDonald House in Iowa City**. Please join us in our mission!

### MEAL SITE MONDAYS THE 3RD MONDAY OF EACH MONTH

Our church serves the meal at Mt. Zion Baptist Church at 6:00 p.m. as part of the Churches United Meal Site Program.

### 3RD SUNDAY BEVERAGE CAN COLLECTION CONTINUES!!! HELP OUR CHILDREN & YOUTH GO TO SUMMER CHURCH CAMP!

#### A Mission Project of the FPCEM Youth Group!

The collection of beverage cans for recycling will continue! The funds that were once raised for the First Day Fund will now help our Children & Youth go to summer Church Camp at Stronghold! So on the 3rd Sunday of Each Month just drop your bag of cans by the front walk and the youth will do the rest! (And don't forget to save those Pop Tabs for the Ronald McDonald House ; just drop them in the House on the bookshelf in the library!)



## Watertown Food Pantry News

Once again, we'd like to thank you, and especially the volunteers, for the support that has been given during the first seven months of the Churches United Watertown Food Pantry re-opening. We received approximately \$60 in cash and food donations from FPC in August.



During the month of August we helped 98 families which were composed of 180 adults and 159 children. While our numbers fluctuate from week to week, we continue to add new families daily to our database. Everyone we serve is thankful for the help and usually says so. We have people who share rides, walk, bicycle, and even an older woman who carries her food in a pack on her head! It's always interesting at the food pantry!! Please consider a donation or volunteering for an afternoon shift. Our open hours are Tuesdays and Fridays from 1-4 pm. There will also be opportunities for stocking shelves, inventorying donations, etc.

At this time we have enough plastic bags thanks to your generosity, but other ongoing needs aside from monetary donations are: toilet paper, any cereal, macaroni and cheese, corn bread/muffin mix, any canned **fruit**, canned tuna/ham/chicken, boxed dinner mixes, instant mashed potatoes - almost anything to make a meal. All food items must be within their "fresh date" per Churches United regulations. We use some of the cash donations to buy fresh milk and eggs.

Again, thank you all for your support and prayers and please feel free to ask us any questions you may have.

Until next month-

Mike & Pat Tyler