

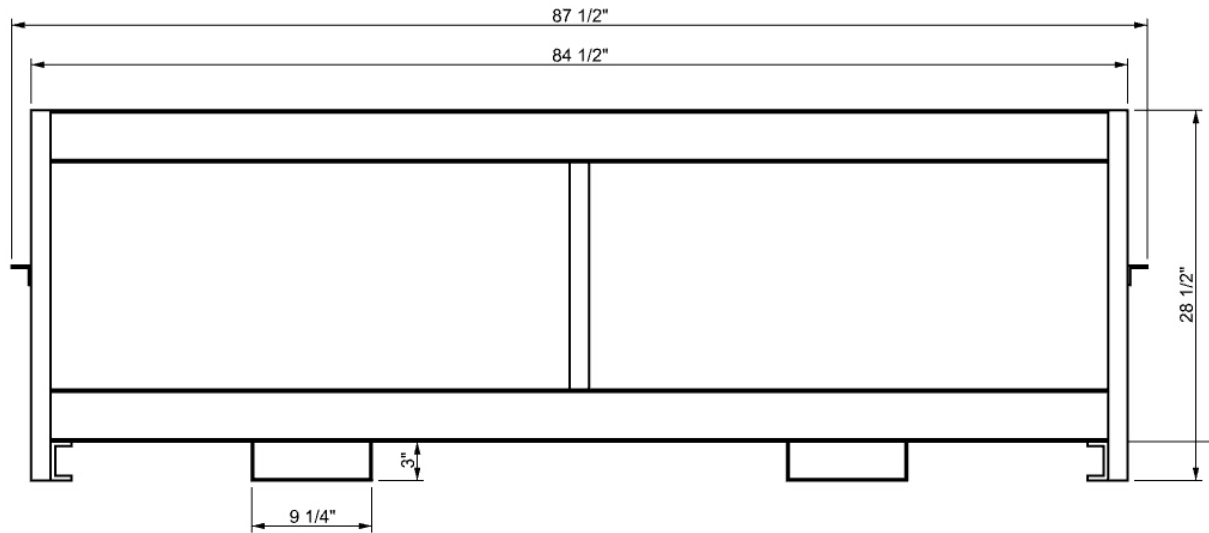
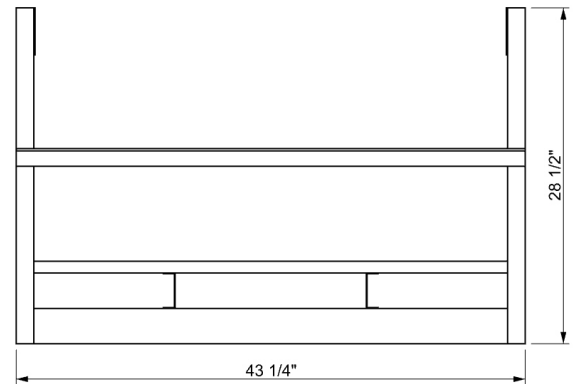
PANEL CRATE

galvanized steel

empty crate weight - 265 lbs

full fixed panel crate weight - 2078 lbs
(capacity 37 panels)

full adjustable crate weight - 1599 lbs
(capacity 23 panels)

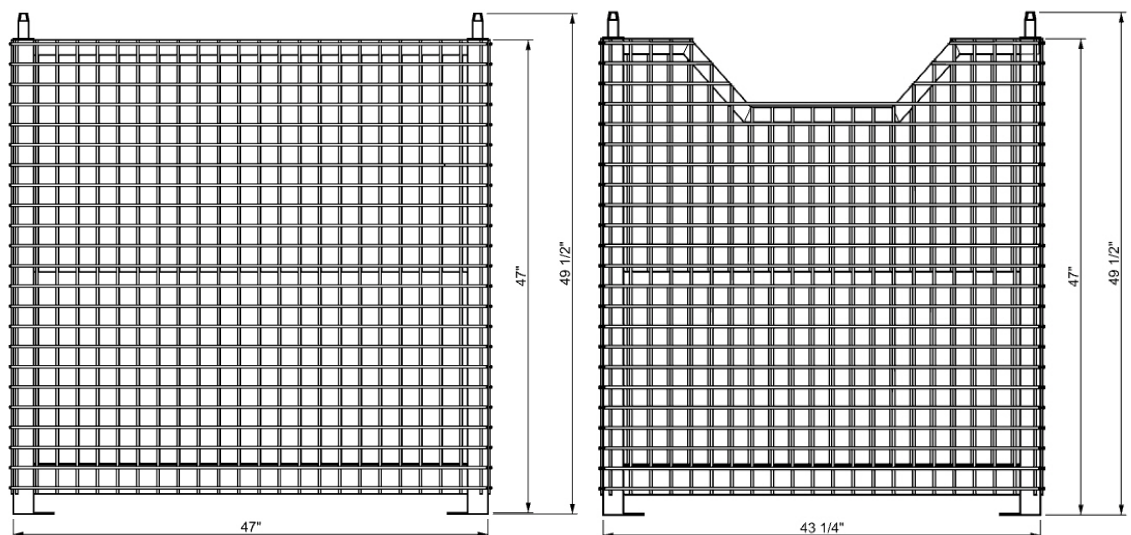


POST CRATE

galvanized steel

empty crate weight - 243 lbs

full crate weight - 1593 lbs
(capacity 75 standard posts)



safe productivity at the leading edge

t. 855.591.7272

w. info@highlandsystems.com

a. 200 Terence Matthews Cres., Ottawa, ON, Canada K2M 2C6

