

## CYPERACEAE – SEDGE FAMILY

**Plant:** annual or more commonly perennial

**Stem:** stem (solid) is termed a culm, simple, mostly erect, often angled (mostly triangular) but some round or angled; some with rhizomes or stolons

**Root:** fibrous

**Leaves:** mostly linear, alternate, parallel veins, often in 3 ranks (vertical rows), leaf sheath usually closed, leaf blade flat, folded, round or absent; a ligule is often present

**Flowers:** small, 2-ranked or spiraled on a spike stalk in 1 or more spikelets in simple to complex inflorescences, each flower in axil of a scale, the inflorescence itself may be subtended by a leaf-like and sometimes showy bracts; perianth usually represented by 1-6 bristles, scales or are absent; perfect or imperfect (monoecious); 3 (1-6) stamens; 1 pistil, 1 style, ovary superior, 2-3 carpels, 1-chambered ovary

**Fruit:** achene (lens-shaped to triangular in cross-section, achene enclosed in a sac – perigynium in the *Carex* genus)

**Other:** often occurring in bogs, swamps, or meadows along streams, but also in dry areas and forests; Monocotyledons Group

**Genera:** 100+ genera; locally many genera

2 slides per species

## CYPERACEAE – OTHER GENERA

Smooth Sawgrass [Twig-Rush]; *Cladium mariscoides* (Muhl.) Torr.

Jamaica Swamp Sawgrass; *Cladium mariscus* (L.) Pohl ssp. *jamaicense* (Crantz) Kük

Slender Fimbry; *Fimbristylis autumnalis* (L.) Roem. & Schult.

Keeled Bulrush; *Isolepis carinata* Hook. & Arn. ex Torr.

Species with one page under  
revision

# Smooth Sawgrass [Twig-Rush]

*Cladium mariscoides* (Muhl.) Torr.

Cyperaceae (Sedge Family)

Irwin Prairie State Nature Preserve, Lucas County, Ohio

Notes: tall (to 1 m+); culm triangular to almost round; leaves flat to channeled (usually less than 4mm wide); inflorescence cymose to paniculate, several (4-10) spikelets, some on pedicels and others sessile; scales papery, achene with pointed tip and nearly flat bottom (acorn-like); usually in wet areas; common; summer to early fall

[V Max Brown, 2008]



Under Revision



# Jamaica Swamp Sawgrass

*Cladium mariscus* (L.) Pohl

ssp. *jamaicense* (Crantz) Kük

Cyperaceae (Sedge Family)

Cedar Key Scrub State Reserve, Levy County,  
Florida

Notes: tall sedge (up to 3 m); leaves flat to v-shaped, up to 1+ cm wide, scabrous (teeth downward, visible to naked eye); inflorescence terminal or lateral and terminal, up to 4 branches, spikelets in groups 2-6, 5-6 floral scales, achenes ovoid (1x2 mm) somewhat 3-lobed; coastal fresh and brackish marshes; spring to summer

[V Max Brown, 2011]



Under Revision



# Slender Fimbry – p1

*Fimbristylis autumnalis* (L.) Roem. & Schult.

Cyperaceae (Sedge Family)

Lake Springfield, Greene county, Missouri

Notes: plant annual, up to 35+ cm; Culms somewhat terete, rhizomes absent, glabrous; roots fibrous; Leaves near base, mostly flat, up to 10+ cm long by up to 1.3+ mm wide; inflorescence of compound to simple umbels (or umbel-like) with usually one involucre bract, 1 to several reddish-brown spikelets (see photos on P2 for details of achene and floret scales); found in many moist habitats such as mudflats, gravel and sand-bars, margins of ponds and lakes and in depressions in prairies and fields; summer to fall.

[V Max Brown, 2015]



# Slender Fimbrity – p2

*Fimbristylis autumnalis* (L.) Roem. & Schult.

[V Max Brown, 2015]



Scales – 1.5 to 2.0 mm, lanceolate with a green midrib (keeled)



Achene – body 0.5 to 0.7mm, pale (straw to brown colored) 3-ribbed (trigonous) to somewhat ovoid, smooth to somewhat warty, 3 stigmas



Inflorescence of compound to simple umbels, usually one involucral bract



Spikelets 3 to 7 mm, here on the smaller end (3 mm), reddish-brown, glabrous



# Keeled Bulrush – p1

*Isolepis carinata* Hook. & Arn.  
ex Torr.



Cyperaceae (Sedge Family)

Near Greers Ferry Lake, Heber Springs,  
Cleburne County, Arkansas

Notes: plant annual, up to 25+ cm; Culm terete to somewhat flattened, glabrous; roots fibrous; Leaves near base, up to 5 cm tall by 0.5 mm wide; inflorescence with usually one involucral bract, 1-3 mostly sessile spikelets, up to 14+ perfect florets (see photos on P2 for details of achene and floret scales); found in many habitats including grasslands, woods, lawns, and other damp to wet places often in sandy soil; spring to summer. An often overlooked species do to size.

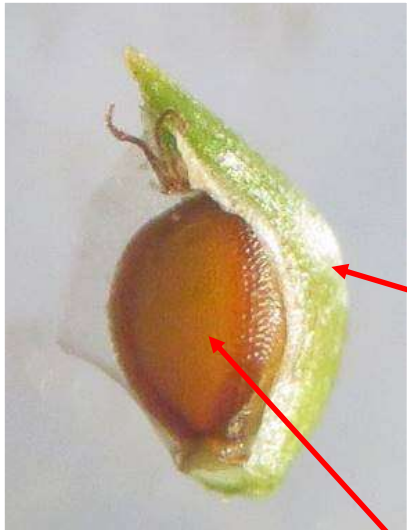
[V Max Brown, 2015]



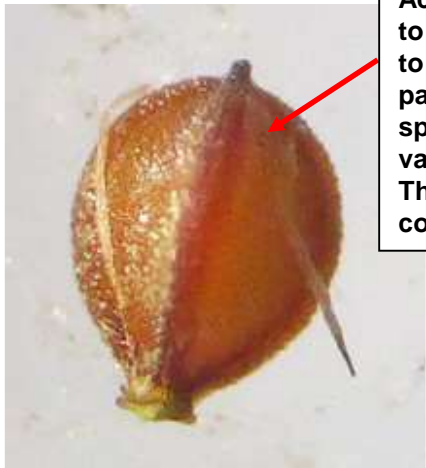
# Keeled Bulrush – p2

*Isolepis carinata* Hook. & Arn. ex Torr.

[V Max Brown, 2015]



Scales up to 3+ mm, with prominent keel and veined midrib, usually green, margins often brownish, scale tightly hugs the achene



Achene (fruit), orange-brown to sometimes white, ellipsoid to trigonous, hard, usually papillose (pebbled). Here specimen is 1.4 mm tall, but varies from 1.0 to 1.5+ mm. There is no white waxy covering of the achene

Inflorescence with usually 1 involucular bract, 1-3 spikelets, up to 14+ florets possible

