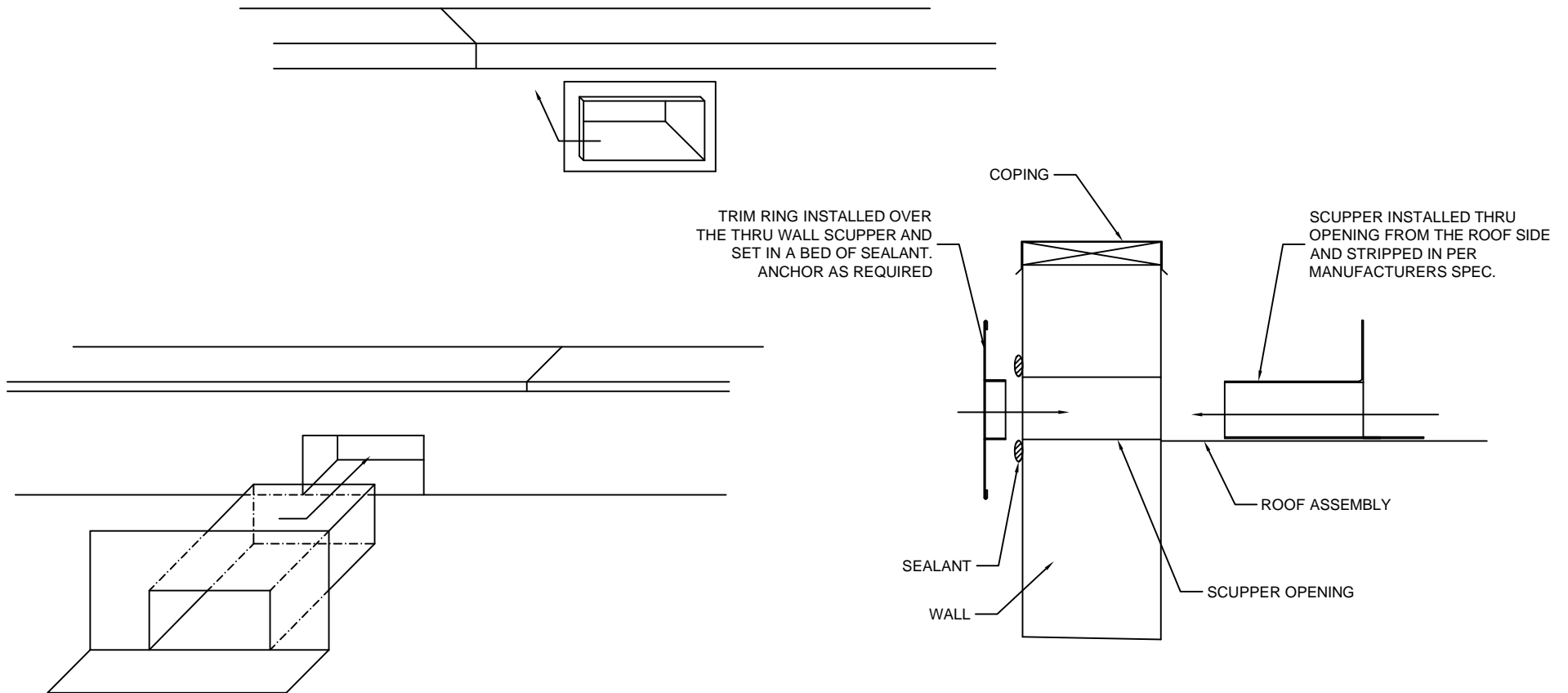


# SCUPPER ISOMETRIC

**TEMPLE**  
Architectural Products



## Notes:

- 1) \*Accessory Welding is only available in 050 aluminum or heavier
- 2) Written approval is required prior to fabrication, contractor is responsible for all dimensions and quantities. Fabricated items are not returnable.

DWG# 770-010

Temple Architectural Products  
1111 Lowell St.  
Elyria, OH 44035

Phone: (440) 323-9393

Fax: (440) 412-7559

Project Name: \_\_\_\_\_

Installing Contractor: \_\_\_\_\_

Contact Name: \_\_\_\_\_

Contact number: \_\_\_\_\_

Signed Approval: \_\_\_\_\_