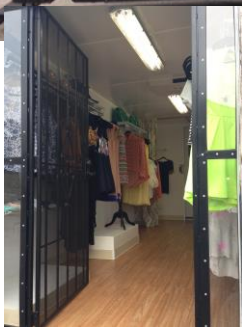


FOR SALE – USED BOUTIQUE TRUCK



2003 24' GMC Workhorse Step Van



Date listed:
May 29, 2014

Vehicle location:
Central GA
(Delivery not included in price)

Truck

- GMC Workhorse Step Van (12,000lb GVWR)
- Sliding front doors
- Rear door with steps
- Engine: Gasoline
- Mileage: 185,065
- GVWR: 14,000lbs.
- Dimensions: 24' long x 8' wide (approx)
- Year of manufacture: 2003

Features/Equipment

- Fresh 2013 conversion!
- Onan Quiet Gasoline generator (94 hours)
- Rooftop Air Conditioning
- Professional conversion by Atlanta Food Trucks
- Additional features on next page!

Asking Price

\$38,000

*For additional information or inquiries,
please contact:*

Specialty Vehicle Services, LLC

Attn: Michael Swendrowski

W196 S8406 Plum Creek Blvd.

Muskego, Wisconsin

USA 53150-8170

262 679 9096 Phone

262 457 4924 Fax

mswendrowski@vehiclesuccess.com

ADDITIONAL DETAILS

Features

- Amazingly Innovative Design! You will beat any competition out of the water with this truck ☺
- 18ft Step Van (Roughly 24 feet from nose to back door)
- Roughly 185,000 miles and tires are in great shape (see pics)
- 1 year old and quiet Cummins Onan Commercial QG gas generator model 5.5HGJAE2131 (with less than 100 hours)
- Breaker box and transfer switch
- 1 year old Air-conditioning Unit (only used for 4 months)
- Custom Wrap (including branding on roof of truck to be seen from high rise buildings)
- Faux hardwood floors inside
- Custom Plexiglas viewing window with detachable awning (made from durable "Sunbrella" material)
- 2 outside half-mannequin stands (half-mannequins included see pics)
- 3 outside storage compartments with locks and door holders (perfect to store inventory, shopping bags, and cleaning supplies)
- 35 foot shoreline cable and outlet (to plug into power sources)
- 2 bright florescent ceiling lights inside
- Color backup camera in the cab
- Fold-up Passenger's seat in cab
- 8 electrical outlets inside (use for space heater, lights, phone charging, steamer etc.)
- 2 permanently attached back-lit mirrors in the dressing rooms
- Dressing room curtains with option for 1 large dressing room or 2 smaller dressing rooms
- 1 permanently attached mannequin visible from outside through the window (wont shift when driving)
- Permanently attached wire shelving (wont shift when driving)
- Permanently attached jewelry display (wont shift when driving)
- Permanently attached small console table (wont shift when driving)
- Wrought iron-style / customer friendly backdoor with Plexiglas sides (see pics)
- Fold-up back stair (see pics)