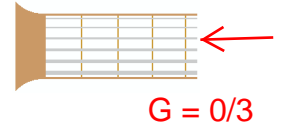


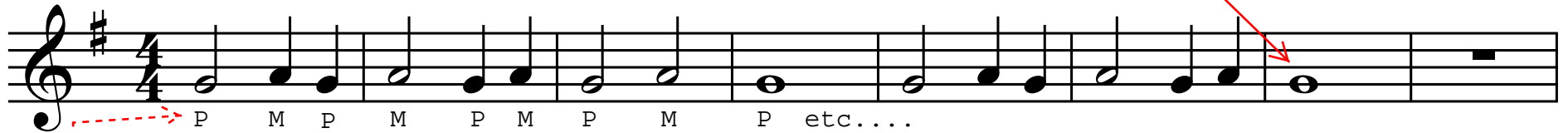
# Habits of Musicianship

Guitar

This is a 2nd line G played using the 3rd string without pressing any Frets



Breathin' Easy

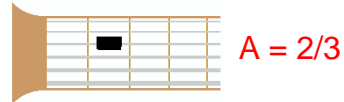


P M P M P M P M P etc....

Rest Stroke Fingerings



This is a 2nd space A - played using the 3rd string and pressing the 2nd Fret



Either Or

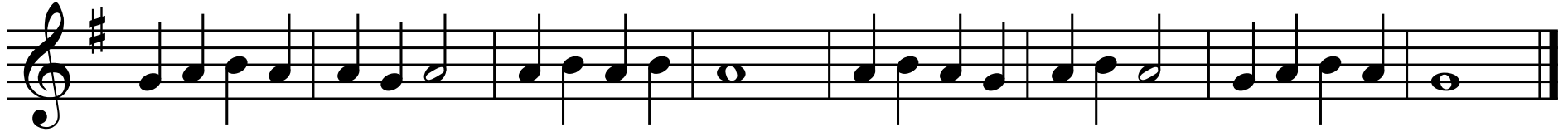


Try to play with a smooth continuous sound to create "phrases" or musical statements. This will require a coordinated motion for both hands - press frets and pluck strings together

Try to build a good habit of practicing the rest Stroke. The pic will be used later - simply, it is easier to start using a pic after practicing Rest Stroke than it is to learn Rest Stroke after using a Pic

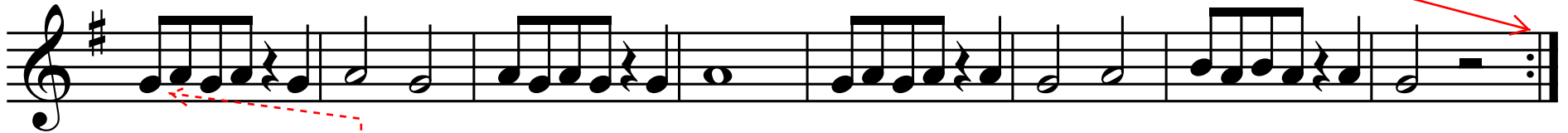


Fun "B"



Repeat to the Beginning

Doo Bah Doo Bah



Eighth Notes = 2 sounds for every 1 Beat (play the 1st note when you tap your foot down and the 2nd when your foot is up.....)

Movin' Along



Time Signature

Spinning

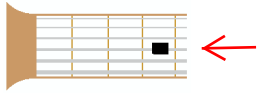


Try to play with a smooth, connected sound throughout!

### Wiggle Room

The musical score for 'Wiggle Room' is written in 4/4 time with a key signature of one sharp (F#). It consists of four staves of music. The first three staves each contain 12 measures. The fourth staff contains 12 measures, ending with a double bar line and a 3/4 time signature. The melody is characterized by a mix of quarter notes, eighth notes, and sixteenth notes, with a prominent use of ties between the final two notes of each measure.

This curved line is a "tie" it attaches 2 notes together to form 1 longer sound



F# - 4/4

F Sharp is Played using 4th string and pressing the 4th Fret (with your Pinky)

Music in 3/4 often has a "skipping" quality to it - long short long short long short.....especially as you build speed

3/4 March



This is a F Sharp



Fermata = play this note longer than it's normal value

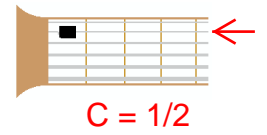
From this point forward students should try to play F# (Sharp) when given the choice but may substitute A if F# proves too difficult at the beginning

Mirror

Snappy Neighbors

These Quarter Notes have dots next to them which makes them last 1 and 1/2 beats = tap your foot down/up and down again - you play the next note when your foot is up the 2nd time (eighth note)

This is an C Played using the 2nd string and pressing the 1st Fret



This Note is an F (natural) using the 4th string and pressing the 3rd Fret

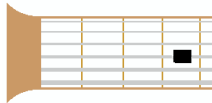
Movin' Down to \_\_\_\_ (F)

A musical staff in treble clef with a key signature of one sharp (F#). The melody consists of eighth and quarter notes, ending with a half note F on the 4th line. A red arrow points from the text box above to this final note.

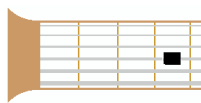
Breathin Easy with F

A musical staff in treble clef with a key signature of one sharp (F#). The melody consists of quarter and eighth notes, ending with a half note F on the 4th line.

There is no natural sign on this F so it is Sharp and can be replaced by A



F# vs. F



← F = 3/4

Salt and Pepper

A musical staff in treble clef with a key signature of one sharp (F#). The melody features a complex rhythmic pattern of eighth and sixteenth notes, ending with a half note F on the 4th line. A red arrow points from the text box above to this final note.

A musical staff in treble clef with a key signature of one sharp (F#). The melody continues with eighth and sixteenth notes.

A musical staff in treble clef with a key signature of one sharp (F#). The melody continues with eighth and sixteenth notes, ending with a half note F on the 4th line. The time signature changes to 3/4 at the end of the staff.



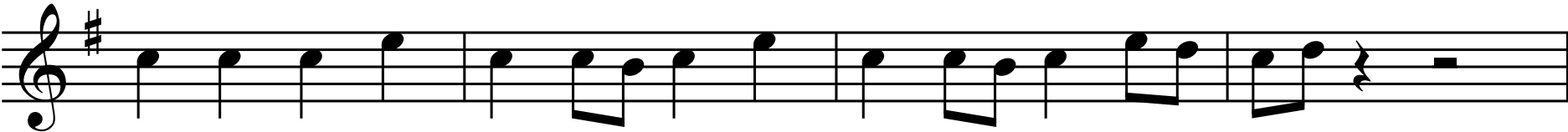




Fax Transmisson Failed? Redial



This is a whole measure rest  
and lasts 4 beats



## Swingin' On \_\_\_\_ (E)



This eighth note/Quarter/eighth pattern is called a syncopation -  
when tapping your foot the sounds are played on the Down-Up-Up

## Give it up for Two Notes one more time

