

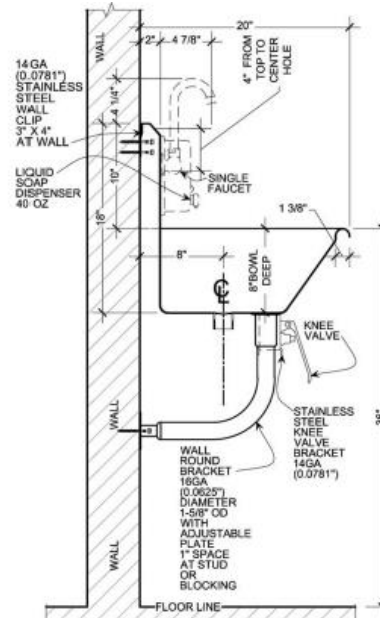
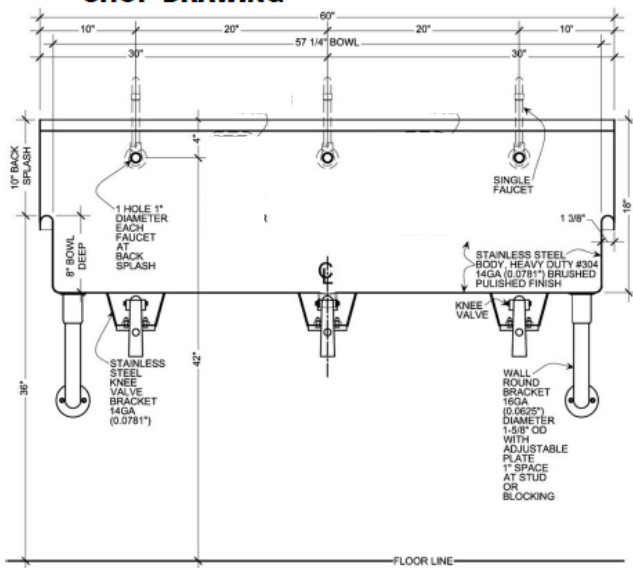
# Wicketts Stainless

## SPECIFICATION

Commercial Sink Heavy Duty  
Wash Up Sink WWT-Series Sens



### SHOP DRAWING



Model Number	A	B				F
WWT-6020-K-LW	60	20	57	8	28.5	10

### Engineering Specification:

14 gauge, type 304 stainless steel wash sink. Top 1-3/8" rolled rims. 1 1/2" drain welded in. Exposed surfaces polished to a satin finish. Supported on (2) wall brackets or legs and clips.

WICKETTS STAINLESS, LLC  
2618 San Miguel Dr. Bldg.# 376  
Newport Beach, CA 92660  
P. (951) 858-2548  
F. (951) 638-90559  
sales@wickettsstainless.com  
www.wickettsstainless.com



Approved for Manufacturing  
Company: \_\_\_\_\_  
Signature: \_\_\_\_\_  
Print: \_\_\_\_\_ Date: \_\_\_\_/\_\_\_\_/\_\_\_\_