

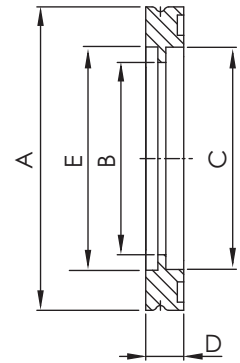
# ISO Flanges



## ISO-K BORED FLANGES

\*Material: SS 304L

Part Number	Size	Nominal Tube OD	A	B	C	D	E
ISOK-BF-63	ISO63	2.5"	95.00	60.20	63.80	11.90	70.10
ISOK-BF-80	ISO80	3"	110.00	72.90	76.50	11.90	83.00
ISOK-BF-100	ISO100	4"	130.00	98.30	101.90	11.90	102.70
ISOK-BF-160	ISO160	6"	180.00	149.10	152.90	11.90	153.00
ISOK-BF-200	ISO200	8"	240.00	197.10	203.70	11.90	213.20
ISOK-BF-250	ISO250	10"	290.00	247.70	254.50	11.90	261.00
ISOK-BF-320	ISO320	12"	370.00	296.82	305.56	17.02	318.01
ISOK-BF-320-1	ISO320	12.75"	370.00	318.00	324.40	17.00	318.00
ISOK-BF-400	ISO400	16"	450.09	396.75	406.91	17.02	400.00
ISOK-BF-500	ISO500	20"	549.91	498.35	508.51	17.02	500.99
ISOK-BF-630	ISO630	24"	690.12	604.77	610.11	22.10	651.00



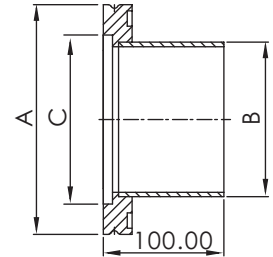
## ISO-K HALF NIPPLES

\*Material: SS 304L

\*Tube Finish: Bead Blast



Part Number	Flange Size	A	B	C
ISOK-HN-63	ISO63	95.00	63.50	70.00
ISOK-HN-80	ISO80	110.00	76.20	83.00
ISOK-HN-100	ISO100	130.00	101.60	102.00
ISOK-HN-160	ISO160	180.00	152.40	153.00
ISOK-HN-200	ISO200	240.00	203.20	213.00
ISOK-HN-250	ISO250	290.00	254.00	261.00
ISOK-HN-320	ISO320	370.00	324.00	318.00



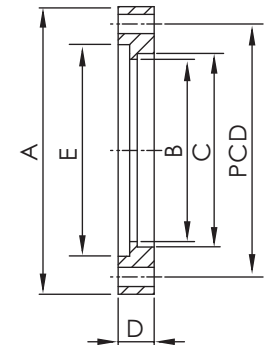
ISO  
NW

## ISO-F BORED FLANGES

\*Material: SS 304L



Part Number	Size	A	B	C	D	E	PCD
ISOF-BF-63	ISO63	130.00	61.90	63.80	11.90	70.00	110.00
ISOF-BF-80	ISO80	145.00	74.60	76.50	11.90	83.00	125.00
ISOF-BF-100	ISO100	165.10	99.30	101.92	11.90	102.00	145.00
ISOF-BF-160	ISO160	225.00	149.20	152.90	16.00	153.00	200.00
ISOF-BF-200	ISO200	285.00	200.00	203.70	16.00	213.00	260.00
ISOF-BF-250	ISO250	335.00	250.80	254.50	16.00	261.00	310.00
ISOF-BF-320	ISO320	425.00	318.00	324.40	20.00	318.00	395.00
ISOF-BF-400	ISO400	510.03	396.75	406.91	20.07	400.00	480.06
ISOF-BF-500	ISO500	610.11	498.35	508.51	20.07	500.99	579.88
ISOF-BF-630	ISO630	750.06	604.77	610.11	23.88	610.10	720.09



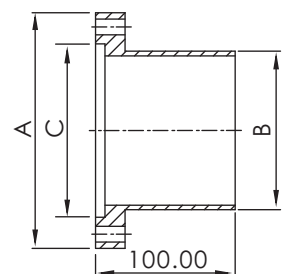
## ISO-F HALF NIPPLES

\*Material: SS 304L

\*Tube Finish: Bead Blast



Part Number	Flange Size	A	B	C
ISOF-HN-63	ISO63	130.00	63.50	70.00
ISOF-HN-80	ISO80	145.00	76.20	83.00
ISOF-HN-100	ISO100	165.10	101.60	102.00
ISOF-HN-160	ISO160	225.00	152.40	153.00
ISOF-HN-200	ISO200	285.00	203.20	213.00
ISOF-HN-250	ISO250	335.00	254.00	261.00
ISOF-HN-320	ISO320	425.00	324.00	318.00



\*Note: SS 316L or Aluminum Material Available on Request.

# ISO Fittings

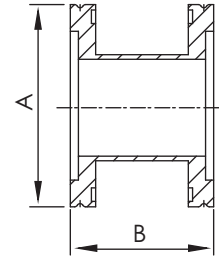
## ISO-K FULL NIPPLES

\*Material: SS 304L

\*Tube Finish: Bead Blast



Part Number	Flange Size	A	B
ISOK-FN-63	ISO63	ISO63	165.10
ISOK-FN-63-1	ISO63	ISO63	175.80
ISOK-FN-80	ISO80	ISO80	196.10
ISOK-FN-80-1	ISO80	ISO80	177.80
ISOK-FN-100	ISO100	ISO100	209.80
ISOK-FN-100-1	ISO100	ISO100	215.90
ISOK-FN-160	ISO160	ISO160	273.30
ISOK-FN-160-1	ISO160	ISO160	275.80



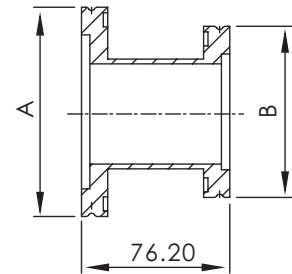
## ISO-K STRAIGHT REDUCING NIPPLES

\*Material: SS 304L

\*Tube Finish: Bead Blast



Part Number	Flange Size	A	B
ISOK-SRN-80x63	ISO80x63	ISO80	ISO63
ISOK-SRN-100x63	ISO100x63	ISO100	ISO63
ISOK-SRN-100x80	ISO100x80	ISO100	ISO80
ISOK-SRN-160x63	ISO160x63	ISO160	ISO63
ISOK-SRN-160x80	ISO160x80	ISO160	ISO80
ISOK-SRN-160x100	ISO160x100	ISO160	ISO100



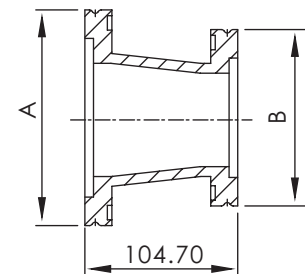
## ISO-K CONICAL REDUCING NIPPLES

\*Material: SS 304L

\*Tube Finish: Bead Blast



Part Number	Flange Size	A	B
ISOK-CRN-80x63	ISO80x63	ISO80	ISO63
ISOK-CRN-100x63	ISO100x63	ISO100	ISO63
ISOK-CRN-100x80	ISO100x80	ISO100	ISO80



\*Note: SS 316L Material Available on Request.

\*Note: Polished and Electro- Polished Tube Finishes Available on Request.

**ISO  
NW**