

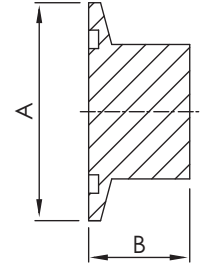
KF Flanges

KF UNBORED STUB FLANGES

*Material: SS 304L



Part Number	Size	A	B
KF-UF-10	KF 10-0.56"L	30.00	14.20
KF-UF-16	KF 16-0.56"L	30.00	14.20
KF-UF-16-1	KF 16-0.75"L	30.00	19.10
KF-UF-25	KF 25-0.47"L	40.00	11.90
KF-UF-25-1	KF 25-0.75"L	40.00	19.10
KF-UF-40	KF 40-0.50"L	55.00	12.70
KF-UF-40-1	KF 40-1.00"L	55.00	25.40
KF-UF-50	KF 50-0.62"L	75.00	15.70
KF-UF-50-1	KF 50-1.00"L	75.00	25.40

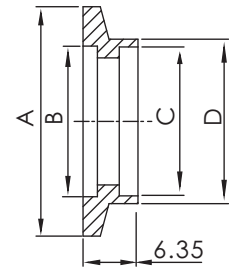


KF SOCKET WELD FLANGES, SHORT

*Material: SS 304L



Part Number	Flange Size	A	B	C	D
KF-SWS-10	KF10	30.00	12.20	12.90	16.00
KF-SWS-16	KF16	30.00	17.20	19.30	22.40
KF-SWS-25	KF25	40.00	26.20	25.70	28.80
KF-SWS-40	KF40	55.00	41.20	38.40	41.50
KF-SWS-50	KF50	75.00	52.20	51.10	54.20

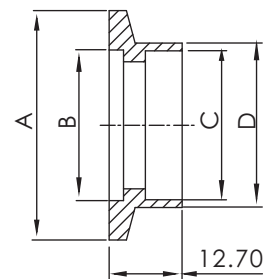


KF SOCKET WELD FLANGES, LONG

*Material: SS 304L



Part Number	Flange Size	A	B	C	D
KF-SWL-10	KF10	30.00	12.20	13.00	15.50
KF-SWL-16	KF16	30.00	17.20	19.30	22.20
KF-SWL-25	KF25	40.00	26.20	25.90	28.60
KF-SWL-40	KF40	55.00	41.20	38.60	44.50
KF-SWL-50	KF50	75.00	52.20	51.30	57.20

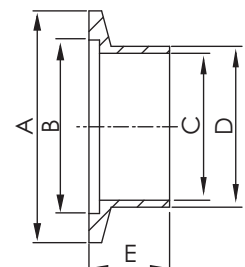


KF BUTT WELD STUB FLANGES, SHORT

*Material: SS 304L



Part Number	Flange Size	A	B	C	D	E
KF-BWS-10	KF10	30.00	12.20	9.40	12.70	12.70
KF-BWS-16	KF16	30.00	12.70	15.70	19.10	12.70
KF-BWS-25	KF25	40.00	26.20	22.10	25.40	12.70
KF-BWS-40	KF40	55.00	41.20	34.80	38.10	19.10
KF-BWS-50	KF50	75.00	52.20	47.50	50.80	19.10



*Note: SS 316L or Aluminum Material Available on Request.

**KF
DN**