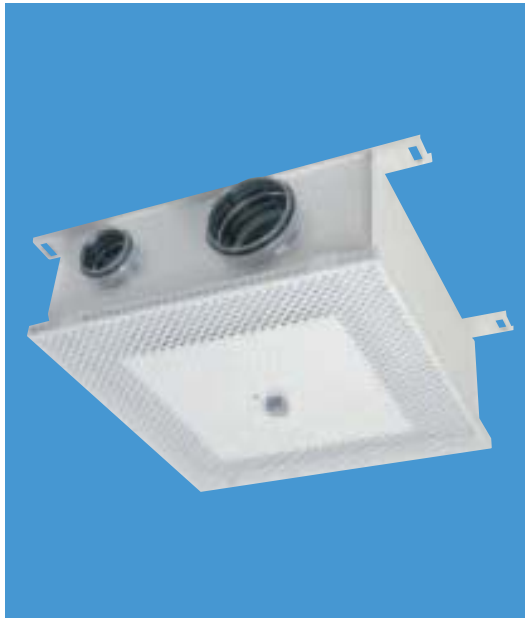


Marine/Offshore - Air Terminal Devices



Fläkt

FläktWoods

Air supply solutions for Marine and Offshore applications

Fläkt started manufacturing ventilation products in Sweden 1920 and the first products for marine applications were delivered to a passenger ship in 1937. Woods started making fans almost 100 years ago and is a respected leader in the field of axial flow fans.

The merger into Fläkt Woods in the beginning of 2002, created a market leader within Marine HVAC with a wide range of quality products for the Marine and Offshore Industries.

Marine applications put high demands on HVAC products and systems. The products must reliably provide the highest degree of indoor climate regardless of climate zone where the vessels are operating.

We ensure excellent quality and performance to optimize the products to build complete HVAC systems.

Our manufacturing process is certified under ISO 9001, ISO 14001 and EMAS (environmental management).

The aim of Fläkt Woods is to design for a good environment, a good indoor climate as well as a low operating costs.

»Mature, developed products to be adjusted to reliably supply right air flow to the right temperature and at a low noise level.«

Air Supply Units: MCDA for DUOVENT dual duct systems

This is a dual duct unit and designed for ceiling mounting above the false ceiling. The air supply unit is intended for climate control in spaces onboard ships and platforms, such as cabins, offices, messes, utility spaces etc.

- Provides good thermal comfort.
- Offers individual temperature control of both supply air temperature and supply air flow.
- Available for manual or automatic control by means of pneumatic or electrical actuators.
- Offers simple and quick installation and commissioning.
- The internal quick and simple insulation satisfies the criteria of IMO Resolution A.799 (19) as well as IMO FTPC Part 1 for classification as non-combustible.
- Conforms to the provisions of IMO Resolution A.754 (18) for false ceilings with fire resistance rating B15.



MCDB full-size diffusers, available for swing down performance for double duct systems.

MCDA normal size diffusers for double duct systems

Total Air flow, (with air diffusers CTGA or CTLM as above)

Size	Cold air	Warm air
2	20 - 60 l/s	20 - 50 l/s
3	25 - 80 l/s	25 - 55 l/s



Size	Cold air	Warm air
------	----------	----------



Fläkt Woods Group Brings Air to Life



MUNTERS INTERNATIONAL INC.

1964 N. Town & River Dr.
Fort Myers, FL 33919, USA
T: +1 540-0006 F: +1 481-3566
WWW.muntersinternational.com
E:anders@muntersinternational.com



FläktWoods