



TARGET

AUDIO
PRODUCTS

Consumer Price List
November 15, 2021

TARGET Equipment Racks

ESV 90



Description

36" tall (90 cm) equipment rack with 3 shelves. Total 6 shelf capacity.

Includes: 4 rack risers, 3 CS shelves, screws, instructions, logo, hex wrench. 2 Boxes/71 lbs.

Options

Shelves: Add up to 3 extra shelves.
Also supports IS shelves

Recommended Accessories:

- ESV-CB Caster kit
- ESV-SB floor spike kit
- Bling thing 1.0 nickel floor spikes
(can only be used with ESV-SB)

Price

Retail: \$1600

ESV 60



Description

24" tall (60 cm) equipment rack with 3 shelves. Total 5 shelf capacity.

Includes: 4 rack risers, 3 CS shelves, screws, instructions, logo, hex wrench. 2 Boxes/58 lbs.

Options

Shelves: Add up to 2 extra shelves.
Also supports IS shelves

Recommended Accessories:

- ESV-CB Caster kit
- ESV-SB floor spike kit
- Bling thing 1.0 nickel floor spikes
(can only be used with ESV-SB or ESV-CB)

Price

Retail: \$1350

CS Shelf



Description

Add extra standard shelves to your ESV series equipment rack.

Includes: CS shelf frame, MDF shelf insert. 11 lbs.

Price

Retail: \$259

IS Shelf



Description

Special heavy isolation shelf for ESV racks. Steel frame is heavier, MDF insert is thicker and is supported by 4 small isolation spikes. Can be used anywhere in the rack. 16 lbs.

Includes: IS shelf frame, MDF shelf insert, 4 isolation spikes

Price

Retail: \$399

Bases for ESV Stands



Description

Add 4 spikes or 4 casters to the bottom of the rack risers.

Includes: Threaded riser inserts and casters or spikes.

Options

Specify:
ESV-SB for Spike Base
ESV-CB for Caster Base

Price

Retail: \$110

VW Wall Mount Shelf



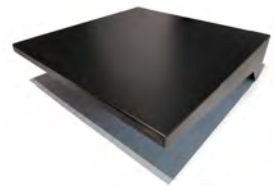
Wall mount shelf designed for supporting turntable. Isolates turntable from footfalls and floor borne vibrations. Similar construction to IS shelf. 23 lbs.

Includes: Wall mount bracket + shelf frame, Thick MDF insert, 4 isolation spikes, screws.

Price

Retail: \$549

VWL Wall Mount Shelf



Sturdy Painted Metal design with cable management and mounting screws. Supports turntables up to 20 lbs. 18"w x 16.75" d x 5"h

Price

Retail: \$149

AS Amplifier Stand



Single shelf floor stand based on CS shelf construction. Suitable for isolating amplifier or power conditioner from the floor. 11 lbs.
Includes: AS shelf frame and MDF insert, 4 carpet spikes.

Recommended Accessories

- ASCB Caster kit
- Bling Thing 1.0 nickel plated floor spikes

Price

Retail: \$309

ASL Amplifier Stand



Sturdy HDF Design. Base with Bling Thing 1.0 Spikes. 18"w x 14"d x 2"h

Price

Retail: \$149

ASCB Caster Kit



4 ea. casters that thread into bottom of AS Amplifier Stand. Fits MB threaded holes. Also fits legacy style speaker stands.

Price

Retail: \$85

FHMCB Caster Kit



8 ea. casters with nickel plated cap for original design and current speaker stands.

Price

Retail: \$195

Spike Shoes Floor Protectors



Set of 4. Steel cups with rubber isolators protect your floors from spike damage. Effective isolation of components from frequency vibrations. Does not permit movement on glass shelves or tile floors.

Price

Retail: \$40

Bling Thing 1.0 Nickel Plated Spike Kit



4 ea. spikes. Fits current AS floor stands for upgraded appearance and old-style Target loudspeaker stands. Also fits AS and ESV-SB kits. Requires blind threaded hole.

Specifications:

each spike 0.500" D x 1.250" H

Price

Retail: \$50

MR Maximum Rigidity Speaker Stand



Top quality loudspeaker stand compatible with large and/or heavy stand-mount and bookshelf loudspeakers. 4 vertical risers

Specifications:

Top Plate: 0.125" L x 6.0" W x 8.0" D

Base Plate: 0.250" L x 9.0" W x 11.0" D

Weight 31, 35, or 39 lbs. per stand depending on height.

Includes: Risers, top and bottom plates, floor spikes, top plate isolation spikes and pads, screws, assembly instructions

** SOLD AS PAIRS, BUT PACKED AS SINGLES

2 Boxes / 31 or 35 or 39 lbs. each

Options

- Height
 - 20" (MR50)
 - 24" (MR60)
 - 28" (MR70)

Price

MR70 **Retail:** \$879

MR60 **Retail:** \$819

Recommended Accessories

- Custom top plate to mount
Bryston Mini T Loudspeakers
- Stance Plates
- Bling Thing 2.0

MR50 **Retail:** \$759

HR High Rigidity Speaker Stand



Top quality loudspeaker stand compatible with high end stand-mount and bookshelf loudspeakers. 2 vertical risers

Specifications:

Top Plate: 0.090" L x 6.0" W x 8.0" D

Base Plate: 0.187" L x 9.0" W x 11.0" D

Weight 18, 20, or 22 lbs. per stand depending on height.

Includes: Risers, top and bottom plates, floor spikes, top plate isolation spikes and pads, screws, assembly instructions.

Packed as pairs. 36, 40 or 44 lbs. each

Options

- Height
 - 20" (HR50)
 - 24" (HR60)
 - 28" (HR70)

Price

HR70 **Retail:** \$489

HR60 **Retail:** \$469

Recommended Accessories

- Stance Plates
- Bling Thing 2.0

HR50 **Retail:** \$439

HS Heavy Stand Speaker Stand



Top quality loudspeaker stand compatible with large and/or heavy stand-mount and bookshelf loudspeakers. 1 large riser

Specifications:

Top Plate: 0.090" L x 6.0" W x 8.0" D

Base Plate: 0.187" L x 9.0" W x 11.0" D

Weight 14, 15, or 16 lbs. per stand depending on height.

Includes: Risers, top and bottom plates, floor spikes, top plate isolation spikes and pads, screws, assembly instructions

Packed as pairs. 36, 40 or 44 lbs. each

Options

- Height
 - 20" (HS50)
 - 24" (HS60)
 - 28" (HS70)

Price

HS70 **Retail:** \$429

HS60 **Retail:** \$419

Recommended Accessories

- Stance Plates
- Bling Thing 2.0

HS50 **Retail:** \$409

FS Firm Stand Speaker Stand



High quality loudspeaker stand compatible with small to medium stand-mount and bookshelf loudspeakers. 2 small risers

Specifications:

Top Plate: 0.125" L x 6.0" W x 8.0" D

Base Plate: 0.250" L x 9.0" W x 11.0" D

Weight 31, 35, or 39 lbs. per stand depending on height.

Includes: Risers, top and bottom plates, floor spikes, top plate isolation spikes and pads, screws, assembly instructions

Packed as pairs. 24, 25 or 26 lbs.

Options

- Height
 - 20" (FS50)
 - 24" (FS60)
 - 28" (FS70)

Recommended Accessories

- Stance Plates
- Bling Thing 2.0

Price

FS70 **Retail:** \$409

FS60 **Retail:** \$399

FS50 **Retail:** \$379

Bling Thing 2.0 Nickel Plated Spike Kit



8 ea. spikes plus matching caps. Fits current style speaker stand, and original base plates or Stance Plates.

Requires threaded through-hole.

Specifications:

each spike 0.500" D x 1.250" H plus top covers

Price

Retail: \$125

Stance Plates Outriggers



4 ea. (for 1 pair of stands) outriggers increase the footprint of you Target speaker stands by 2 inches in length and width. Can be used with stock spikes or Bling Thing 2.0 Spikes.

Includes: Bolts for mounting to base plate

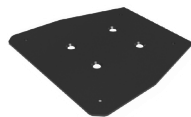
Price

Recommended Accessories

- Bling Thing 2.0

Retail: \$150

Bryston Mini T Custom Top Plates



Replaces MR speaker stand top plate. Screws onto bottom of Mini T loudspeaker. Same footprint as bottom of loudspeaker. Price includes one pair of top plates

Price

Retail: TBD

Contact Bryston to Order

Bryston Mini A Custom Top Plates



Replaces standard speaker stand top plate on FS, HS, and HR stands. Same footprint as bottom of loudspeaker. Price includes one pair of top plates. Includes rubber bumpers to isolate speaker

Price

Retail: TBD

Contact Bryston to Order