

DHI TEST DAY



2007



Entering Information

- Garbage in = garbage out
- Pre-test day
 - **Status changes – kidded, dried off, sold, aborted**
 - **Reproductive changes – heats, breeding**
 - **Herd health**
 - **Identification**
 - **Corrections**



Preparation

- Have clean equipment
 - Scales
 - Dipper
 - Sample Vials
- Biosecurity
 - Boots
 - Clothing
 - Equipment



Scales & Meters

Tester's scale/meter or
Owner's scale/meter
must have
certification within
the last year.



Tare the Scale

- Zero the scale to the pail used for weighing prior to starting.
- Note clock in background!



Milking Time

- Organized in the parlor – sheets, sample vials, racks, computer
- Test day procedures are important
- Working conditions conducive to accurate representation of the herd



Visible & Permanent ID

- Check Tags each test day
- Check Tattoos on herd additions, at VT, and occasional "spot checks"



Observe Milking

- Observe milking
 - You are the Supervisor!
- Note Start time when milking 1st doe
- Note Stop time after last doe is milked



Test Systems

Measure and record milk weight



- Methods of weighing milk
 - bucket and scales
 - meters - mechanical or volume
 - weigh jars
 - electronic



Weigh Milk

- Weigh milk to 10th of a pound
- Record on barnsheet



Before Pail Sampling

- Pour back & forth 3 times
- This insures proper mixing of milk for sampling



Obtain Representative Sample

- Agitate
- Milking Interval
- Influence of stage of milking on composition
- Sample Handling
 - Preservatives
 - Avoid temperature extremes
 - Ship quickly

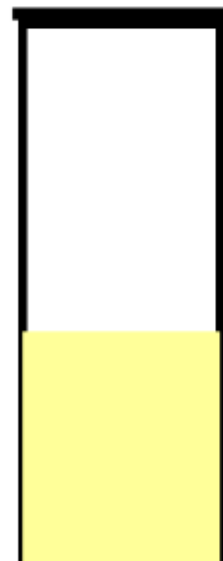
Taking the Sample

- Sample must be from all milk obtained from doe
- For Standard or O/S test, fill vial halfway at each test
- For alternate component tests, take complete sample



Filling

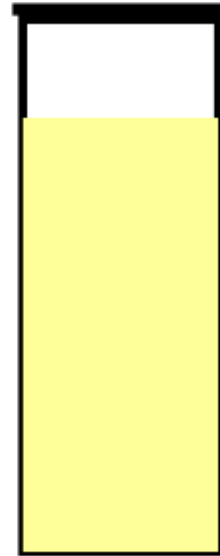
- Proper Sampling Technique
 - Fill sample to slightly less than 1/2 full on 1st milking
 - Same vial to 80% full on 2nd milking



Filling



- Proper Sampling Technique
 - Fill sample to slightly less than 1/2 full on 1st milking
 - Same vial to 80% full on 2nd milking



Vials

- Check to make sure preservative is present
- Leave 1/4 inch space at top
- Gently mix sampled milk with preservative



Barn Sheet Checklist

- Weights
- Sample #
- Dated
- Signed
- Herd Info
- Stop/start times
- Sampled check
- VT check



Common Errors *

Description	Percent of total errors
Sire ID different from ADGA	15%
Dam ID different from ADGA	15%
More than 1 pedigree difference	14%
Invalid breed codes	12%
Birthdate does not match ADGA	6%
Letter in ID where not allowed	5%
Freshen Date does not match progeny birthdate	3%
Day of Month not in freshen date	3%

* May prevent use in evaluations



Sample Storage

- Room temperature if not too hot
- Store upright
- Refrigerate if over 75°
- Secure storage is tester's responsibility



Shipping

- Separate groups
- Herdcode at 1st and last sample if more than one herd
- Shipping boxes available or make own
- Secure lids
- Cool pack if hot weather
- Insert sheets outside of box



Sample & Data Flow



1-LAB RESULTS



2-DRPC DATA

3-USDA AIPL Evaluations



4-ADGA Programs

