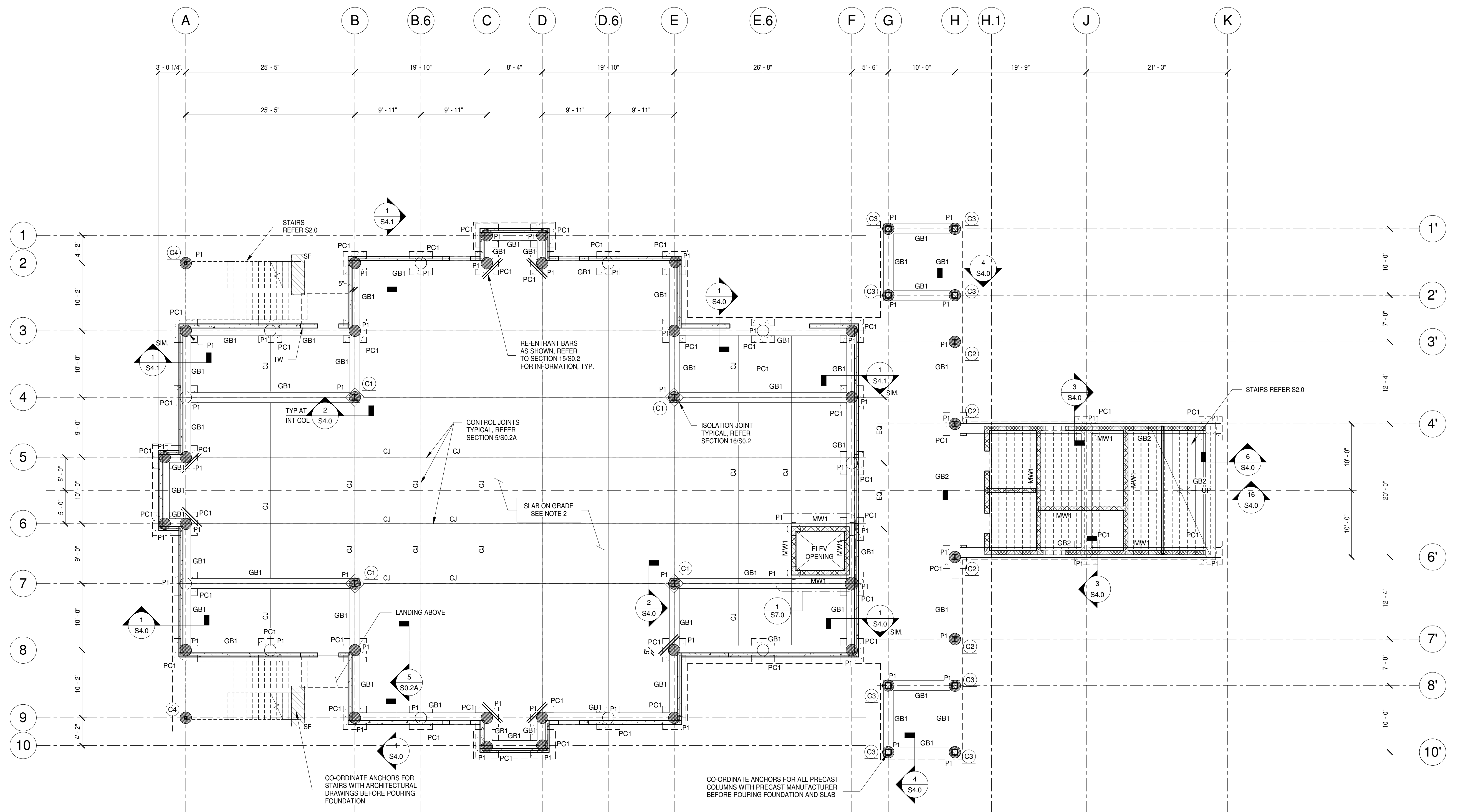
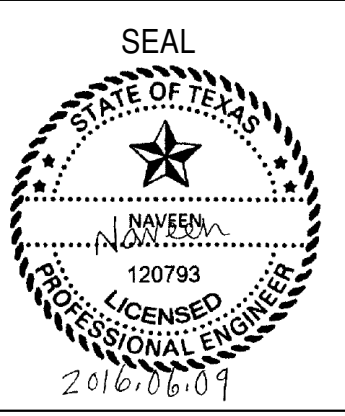


REVISIONS

ADDENDUM NO. 2	06-09-2016



- FOUNDATION AND FIRST FLOOR PLAN NOTES:**
- FINISHED FLOOR ELEVATION = 0'-0" (U.N.O.)
 - SLAB ON GRADE: 4" CONCRETE SLAB ON GRADE WITH @16" O.C EACH WAY OVER 10 MIL VAPOR BARRIER OVER 4" COMPACTED GRANULAR FILL, TYP, UNO.
 - PROVIDE SLAB CONTROL JOINTS ABOUT AN AREA OF SLAB PER PLAN AND SECTION 5/SO.2A.
 - GB - AS SHOWN ON PLAN INDICATES GRADE BEAM, SEE SCHEDULE ON SHEET S8.0 FOR SIZE AND REINF.
 - P - PIERS, FOR REINFORCEMENT DETAILS REFER SHEET S8.0
 - "TW" AS SHOWN ON PLAN INDICATES TILT UP WALL, SEE SCHEDULE ON SHEET S8.0 FOR SIZE AND REINF.
 - C - COLUMNS, REFER S8.0 FOR COLUMNS SCHEDULE
 - PC - PIER CAP, FOR REINFORCEMENT DETAILS REFER SHEET S8.0
 - COORDINATE AND VERIFY ALL DIMENSIONS WITH ARCHITECTURAL DRAWINGS PRIOR TO BEGINNING CONSTRUCTION.
 - FOR DIMENSIONS NOT SHOWN SEE ARCHITECTURAL DRAWINGS.
 - GC TO VERIFY FINISHED GRADE SHOWN ON CIVIL DRAWINGS. SEE GENERAL STRUCTURAL NOTES MINIMUM FOUNDATION BEARING DEPTH.
 - REFER SHEET S12.0 FOR TILT-UP PANEL PLAN VIEW AND ELEVATION DETAILS.
 - SF - STAIRCASE FOOTING 2'-0" X 1'-6" DEEP W/ 3 - #5 LONGITUDINAL AND #5 AT 12" O.C. EXTEND FOOTING 1'-0" PAST EDGE OF STAIR IN BOTH DIRECTIONS.

LEGENDS:

	EXISTING / POURED PIERS
	NEW PIERS
	12" DIA. PRECAST COLUMNS

1 FOUNDATION AND FIRST FLOOR PLAN
S1.0 1/8" = 1'-0"

