

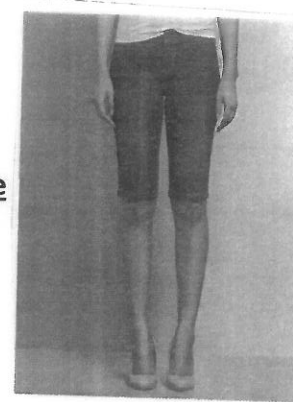
## Dress Code Examples

- Shorts **MUST** be worn at knee length.
- **NO** cut-offs or shorts unhemmed/frayed edges

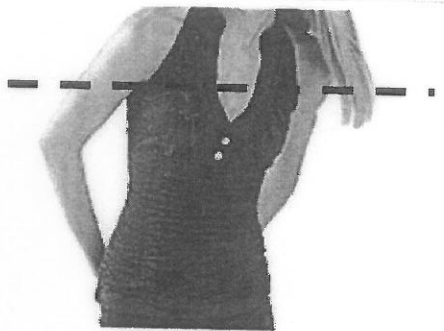
Unacceptable



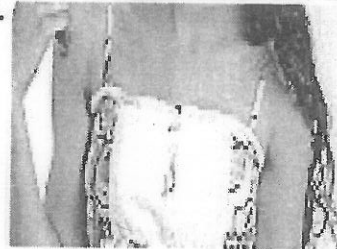
Acceptable



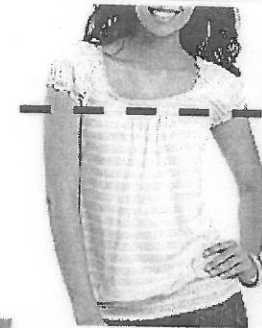
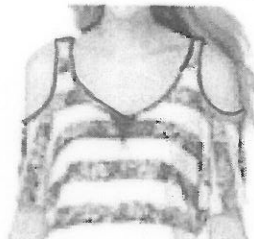
- Shirts, blouses, and tops should be **MODEST** and **NOT** expose a student's cleavage or busts.
- Tops may **NOT** be cut below the bust line.
- The bust line continues around your sides directly under the armpit w/arms down at your sides.
- **ALL** jersey's, dresses, or tops **MUST** have a sleeve and cover the **ENTIRE** mid-driff.
- Halters, backless, string ties, crop tops, and tank tops are **NOT PERMISSIBLE**.
- **NO** large arm holes and/or gaping parts that expose the back and/or sides will be allowed **UNLESS** an appropriate shirt that meets the dress code is worn underneath.



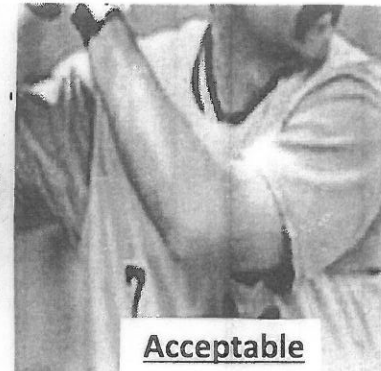
Unacceptable



Unacceptable  
Any type  
of  
cutouts



Acceptable



Acceptable

197

## Dress Code Examples

- Skirts and/or dresses may NOT be shorter than the knee.
- This INCLUDES slits in dresses and skirts.
- No SAGGY or OVER SIZED pants will be accepted.
- Sheer/see through blouses/tops, fishnet, see-through jerseys are NOT allowed.
- Tee-shirts with vulgar language/images or depicting death/violence will NOT be allowed.

Unacceptable



Unacceptable



Acceptable

