

**FROM THE OFFICE OF:**

Solus Architecture  
1032 Klondyke Loop  
Somers, MT 59932

**PROJECT:**

Kila School District #20 Classroom Addition  
Kila, MT

June 23, 2015

**ADDENDUM NO. 1**

**Acknowledge receipt of this Addendum by inserting its number and date in the Proposal form. Failure to do so may subject the Bidder to disqualification. This addendum forms a part of the Contract Documents. It modifies them as follows:**

**GENERAL:**

Attached is the plan holders list.

**QUESTIONS:**

Q: Is the Owner or the Contractor paying the Permit fee?

A: The Contractor will include all review and permit fees in their bid.

Q: Is the exterior sidewalk tied into the foundation.

A: See detail 8/A9.0 for sidewalk connection at doorways. Provide ½ felt expansion joint material where sidewalk abuts exterior walls.

**SPECIFICATION:**

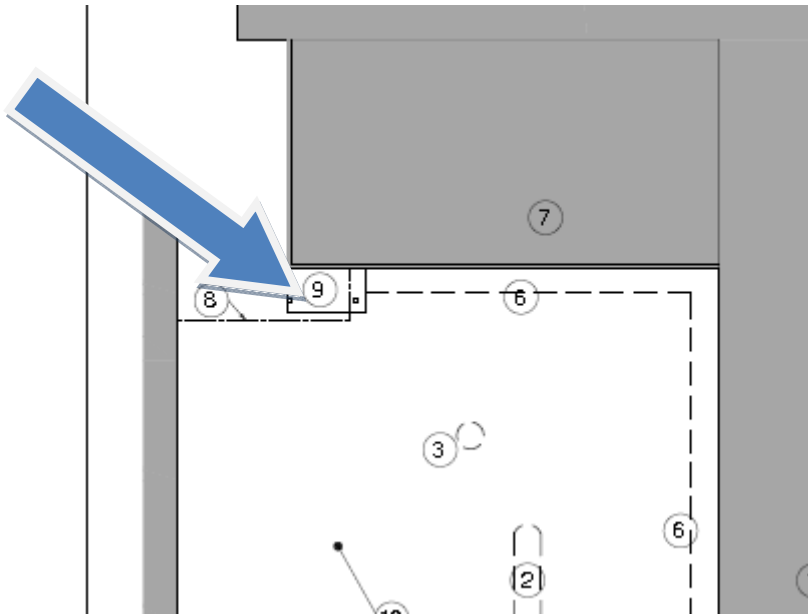
- VCT Colors – VCT colors have not been chosen. Pattern for VCT-1 will consist of a 12” border along the walls, VCT-2 will be used elsewhere.
- Sheet Vinyl – Colors have not been chosen. Owner will select from full line.

**DRAWINGS:**

Sheet LA1.0 –

- Demolition Note #5 – Owner will arrange for removal of tree prior to beginning of construction. Contractor will be responsible for removal of stump and roots.
- Demolition Note #9 – Demolition of slab near existing door (shown next page) is not anticipated or desired.
- Site Note #5 – Provide 6” woven wire mesh in sidewalks – typ.
- Site Note #5 – Along north and east edges of entry sidewalk provide “Turned down” or “Thickened” edges to allow for elevation change between sidewalk and existing perimeter of playground. Anticipated step height is 10”-16”

**ADDENDUM NO. 1,**



Sheet A9.0 –

- Rooms 101 & 102 – Provide carpet tile (CPT) throughout entire room. See attached carpet tile specification.

Sheet S1.0 and S1.1

- See attached drawing for revised foundation and roof framing. (SSK1 – SSK4)
- Contractor is responsible for adjustments to foundation depth to maintain frost depth.

**APPROVED EQUALS:**

Section 075423

- GAF Everguard TPO – 60 Mil is approved
- Versico Roofing Systems; VersiWeld TPO Membrane is approved

**END ADDENDUM**



## **SECTION 09 6813 – TILE CARPETING**

### **PART 1 - GENERAL**

#### **1.1 RELATED DOCUMENTS**

- A. Drawings and general provisions of the Contract, including General and Supplementary Conditions and Division 1 Specification Sections, apply to this Section.

#### **1.2 SUMMARY**

- A. Section includes modular carpet tile.
- B. Related Requirements:
  - 1. Division 9 Section Resilient Wall Base and Accessories for resilient wall base and accessories installed with carpet tile.

#### **1.3 ACTION SUBMITTALS**

- A. Product Data: For each type of product.
  - 1. Include manufacturer's written data on physical characteristics, durability, and fade resistance.
  - 2. Include installation recommendations for each type of substrate.
- B. Samples: For each of the following products and for each color and texture required. Label each Sample with manufacturer's name, material description, color, pattern, and designation indicated on Drawings and in schedules.
  - 1. Carpet Tile: Full-size Sample.
  - 2. Exposed Edge, Transition, and Other Accessory Stripping: 12-inch- long Samples.

#### **1.4 INFORMATIONAL SUBMITTALS**

- A. Product Test Reports: For carpet tile, for tests performed by a qualified testing agency.
- B. Sample Warranty: For special warranty.

#### **1.5 CLOSEOUT SUBMITTALS**

- A. Maintenance Data: For carpet tiles to include in maintenance manuals. Include the following:
  - 1. Methods for maintaining carpet tile, including cleaning and stain-removal products and procedures and manufacturer's recommended maintenance schedule.
  - 2. Precautions for cleaning materials and methods that could be detrimental to carpet tile.

#### **1.6 MAINTENANCE MATERIAL SUBMITTALS**

- A. Furnish extra materials, from the same product run, that match products installed and that are packaged with protective covering for storage and identified with labels describing contents.
  - 1. Carpet Tile: 10 full-size units

#### **1.7 QUALITY ASSURANCE**

- A. Fire-Test-Response Ratings: Where indicated, provide carpet tile identical to those of assemblies tested for fire response according to NFPA 253 by a qualified testing agency.

#### **1.8 DELIVERY, STORAGE, AND HANDLING**

- A. Comply with CRI 104.

#### **1.9 FIELD CONDITIONS**

- A. Comply with CRI 104 for temperature, humidity, and ventilation limitations.
- B. Environmental Limitations: Do not deliver or install carpet tiles until spaces are enclosed and weathertight, wet work in spaces is complete and dry, and ambient temperature and humidity conditions are maintained at occupancy levels during the remainder of the construction period.
- C. Do not install carpet tiles over concrete slabs until slabs have cured and are sufficiently dry to bond with adhesive and concrete slabs have pH range recommended by carpet tile manufacturer.

D. Where demountable partitions or other items are indicated for installation on top of carpet tiles, install carpet tiles before installing these items.

#### 1.10 WARRANTY

- A. Special Warranty for Carpet Tiles: Manufacturer agrees to repair or replace components of carpet tile installation that fail in materials or workmanship within specified warranty period.
1. Warranty does not include deterioration or failure of carpet tile due to unusual traffic, failure of substrate, vandalism, or abuse.
  2. Failures include, but are not limited to, more than 10 percent edge raveling, snags, runs, dimensional stability, excess static discharge, loss of tuft bind strength, loss of face fiber and delamination.
  3. Warranty Period: 10 years from date of Substantial Completion plus manufacturers limited life time warranty.

### PART 2 - PRODUCTS

#### 2.1 CARPET TILE <CPT>

A. Products: Subject to compliance with requirements provide the following:

**1. Shaw: Intrigue Tile**

B. Basis-of-Design Product: Subject to compliance with requirements, provide product indicated or comparable product by one of the following:

1. Lees
2. Bigelow
3. Mohawk

C. Color: As selected by Architect from manufacturer's full range

D. Style: 59558

E. Fiber Type: 100 percent eco\*solution Q premium dyed nylon

F. Pile Characteristic: Multi-level pattern loop pile.

G. Density: 7,355 oz./cu. yd.

H. Pile Thickness: .093 inches for finished carpet tile

I. Stitches: 9 per inch

J. Total Weight: 19 oz./sq. yd. for finished carpet tile.

K. Primary Backing: Synthetic

L. Secondary Backing: Ecoworx tile

M. Size: 24 by 24 inches.

N. Pattern Repeat: None

O. Protective Treatment: SSP SHAW soil protection

P. Antimicrobial Treatment: Manufacturer's standard material

#### 2.2 INSTALLATION ACCESSORIES

A. Trowelable Leveling and Patching Compounds: Latex-modified, hydraulic-cement-based formulation provided or recommended by carpet tile manufacturer.

B. Adhesives: Water-resistant, mildew-resistant, nonstaining, pressure-sensitive type to suit products and subfloor conditions indicated, that complies with flammability requirements for installed carpet tile and is recommended by carpet tile manufacturer for releasable installation.

1. Adhesives shall have a VOC content of 50 g/L or less when calculated according to 40 CFR 59, Subpart D (EPA Method 24).
2. Adhesives shall comply with the testing and product requirements of the California Department of Health Services' "Standard Practice for the Testing of Volatile Organic Emissions from Various Sources Using Small-Scale Environmental Chambers."

## PART 3 - EXECUTION

### 3.1 EXAMINATION

- A. Examine substrates, areas, and conditions, with Installer present, for compliance with requirements for maximum moisture content, alkalinity range, installation tolerances, and other conditions affecting carpet tile performance. Examine carpet tile for type, color, pattern, and potential defects.
- B. Concrete Subfloors: Verify that concrete slabs comply with ASTM F 710 and the following:
  - 1. Slab substrates are dry and free of curing compounds, sealers, hardeners, and other materials that may interfere with adhesive bond. Determine adhesion and dryness characteristics by performing bond and moisture tests recommended by carpet tile manufacturer.
  - 2. Subfloor finishes comply with requirements specified in Division 3 Section "Cast-in-Place Concrete" for slabs receiving carpet tile.
  - 3. Subfloors are free of cracks, ridges, depressions, scale, and foreign deposits.
- C. Proceed with installation only after unsatisfactory conditions have been corrected.

### 3.2 PREPARATION

- A. General: Comply with CRI 104, Section 6.2, "Site Conditions; Floor Preparation," and with carpet tile manufacturer's written installation instructions for preparing substrates indicated to receive carpet tile installation.
- B. Use trowelable leveling and patching compounds, according to manufacturer's written instructions, to fill cracks, holes, depressions, and protrusions in substrates. Fill or level cracks, holes and depressions 1/8 inch wide or wider and protrusions more than 1/32 inch unless more stringent requirements are required by manufacturer's written instructions.
- C. Remove coatings, including curing compounds, and other substances that are incompatible with adhesives and that contain soap, wax, oil, or silicone, without using solvents. Use mechanical methods recommended in writing by carpet tile manufacturer.
- D. Broom and vacuum clean substrates to be covered immediately before installing carpet tile.

### 3.3 INSTALLATION

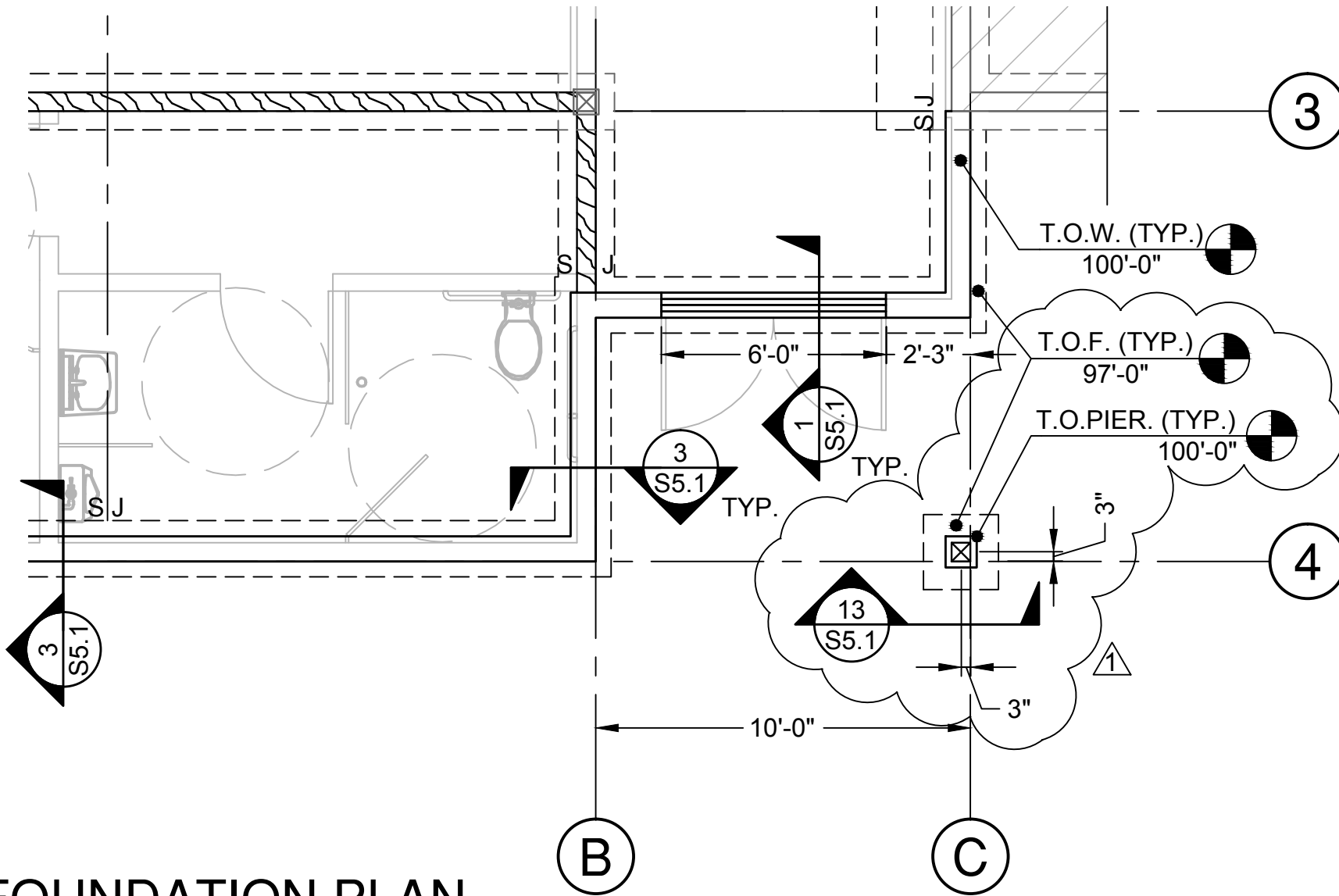
- A. General: Comply with CRI 104, Section 14, "Carpet Modules," and with carpet tile manufacturer's written installation instructions.
- B. Installation Method: Glue down; install every tile with full-spread, releasable, pressure-sensitive adhesive.
- C. Maintain dye lot integrity. Do not mix dye lots in same area.
- D. Maintain dye lot integrity. Do not mix dye lots in same area.
- E. Cut and fit carpet tile to butt tightly to vertical surfaces, permanent fixtures, and built-in furniture including cabinets, pipes, outlets, edgings, thresholds, and nosings. Bind or seal cut edges as recommended by carpet tile manufacturer.
- F. Extend carpet tile into toe spaces, door reveals, closets, open-bottomed obstructions, removable flanges, alcoves, and similar openings.
- G. Maintain reference markers, holes, and openings that are in place or marked for future cutting by repeating on finish flooring as marked on subfloor. Use nonpermanent, nonstaining marking device.
- H. Install pattern parallel to walls and borders.
- I. Install carpet tiles ¼ turn.

### 3.4 CLEANING AND PROTECTION

- A. Perform the following operations immediately after installing carpet tile:
  - 1. Remove excess adhesive, seam sealer, and other surface blemishes using cleaner recommended by carpet tile manufacturer.
  - 2. Remove yarns that protrude from carpet tile surface.

3. Vacuum carpet tile using commercial machine with face-beater element.
- B. Protect installed carpet tile to comply with CRI 104, Section 16, "Protecting Indoor Installations."
- C. Protect carpet tile against damage from construction operations and placement of equipment and fixtures during the remainder of construction period. Use protection methods indicated or recommended in writing by carpet tile manufacturer.

**END OF SECTION 09 6813**



# FOUNDATION PLAN

1/4" = 1'-0"



Engineers  
Surveyors  
Scientists  
Planners

125 Schoolhouse Loop  
Kalispell, MT 59901  
Phone: (406) 752-2216  
Fax: (406) 752-2391

COPYRIGHT © MORRISON-MAIERLE, INC., 2015

DRAWN BY: SGH  
DSGN BY: MLC  
APPR. BY: MLC  
DATE: 6/23/2015

KILA

KILA SCHOOL ADDITION

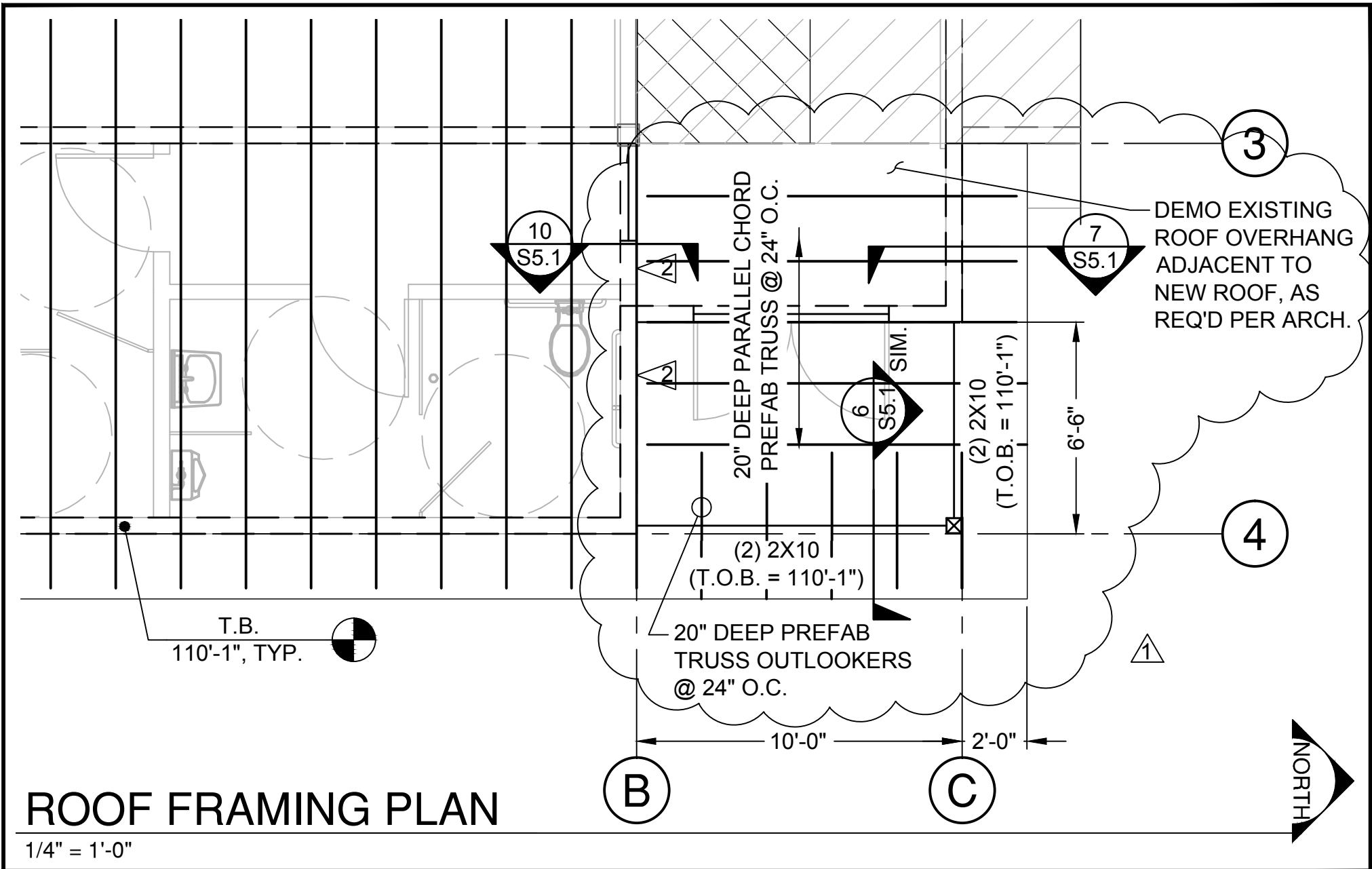
MONTANA

PROJECT NO.  
5414.005

FOUNDATION PLAN S1.0-ADDENDUM #1

FIGURE NUMBER  
**SSK-1**





# ROOF FRAMING PLAN

1/4" = 1'-0"



Engineers  
Surveyors  
Scientists  
Planners

125 Schoolhouse Loop  
Kalispell, MT 59901  
Phone: (406) 752-2216  
Fax: (406) 752-2391

COPYRIGHT © MORRISON-MAIERLE, INC., 2015

DRAWN BY: SGH  
DSGN BY: MLC  
APPR. BY: MLC  
DATE: 6/23/2015

KILA

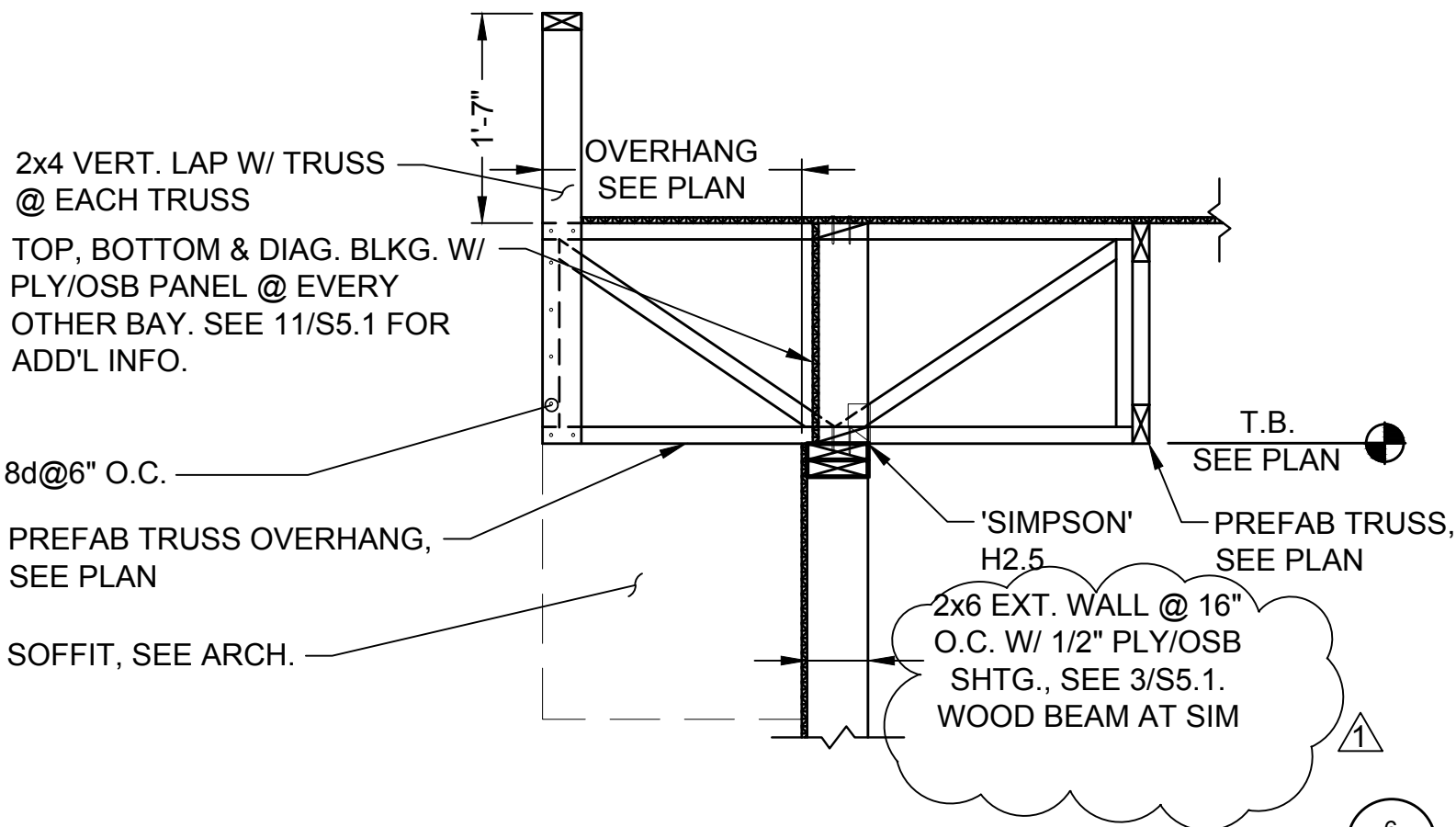
KILA SCHOOL ADDITION

MONTANA

PROJECT NO.  
5414.005

ROOF FRAMING PLAN S1.1-ADDENDUM #1

FIGURE NUMBER  
**SSK-2**



2x4 VERT. LAP W/ TRUSS @ EACH TRUSS

TOP, BOTTOM & DIAG. BLKG. W/ PLY/OSB PANEL @ EVERY OTHER BAY. SEE 11/S5.1 FOR ADD'L INFO.

8d@6" O.C.

PREFAB TRUSS OVERHANG, SEE PLAN

SOFFIT, SEE ARCH.

OVERHANG SEE PLAN

T.B. SEE PLAN

'SIMPSON' H2.5 PREFAB TRUSS, SEE PLAN

2x6 EXT. WALL @ 16" O.C. W/ 1/2" PLY/OSB SHTG., SEE 3/S5.1. WOOD BEAM AT SIM

SCALE: 3/4" = 1'-0"

6 S5.1



Engineers  
Surveyors  
Scientists  
Planners  
125 Schoolhouse Loop  
Kalispell, MT 59901  
Phone: (406) 752-2216  
Fax: (406) 752-2391

DRAWN BY: SGH  
DSGN BY: MLC  
APPR. BY: MLC  
DATE: 6/23/2015

KILA KILA SCHOOL ADDITION MONTANA

PROJECT NO. 5414.005

STRUCTURAL DETAIL 6/S5.1 REVISIONS-ADDENDUM #1

FIGURE NUMBER SSK-3

