

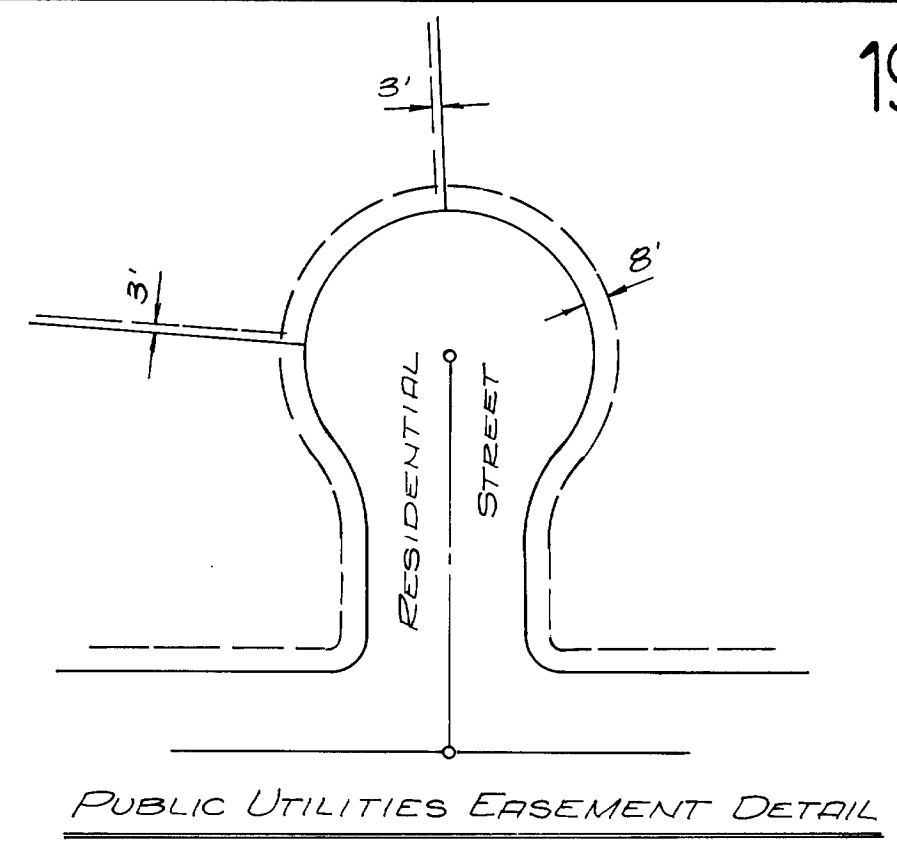
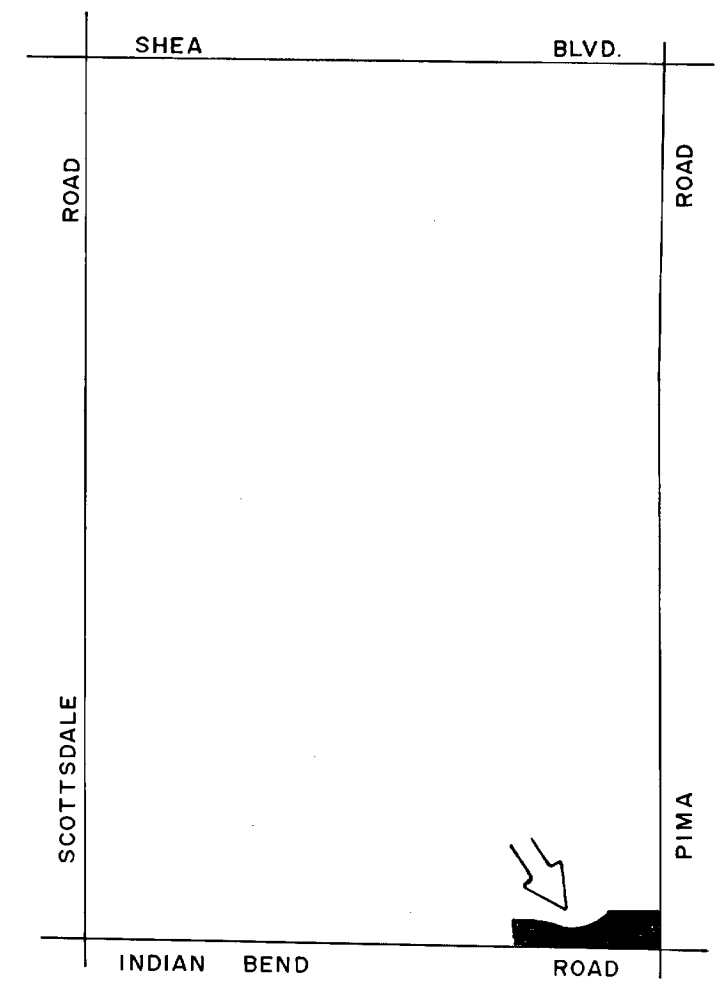
190-5

190-5

CARRIAGE SQUARE

A PART OF SANDS SCOTTSDALE

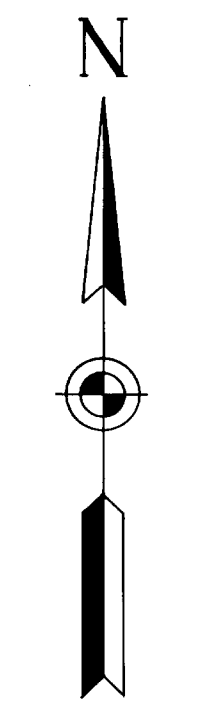
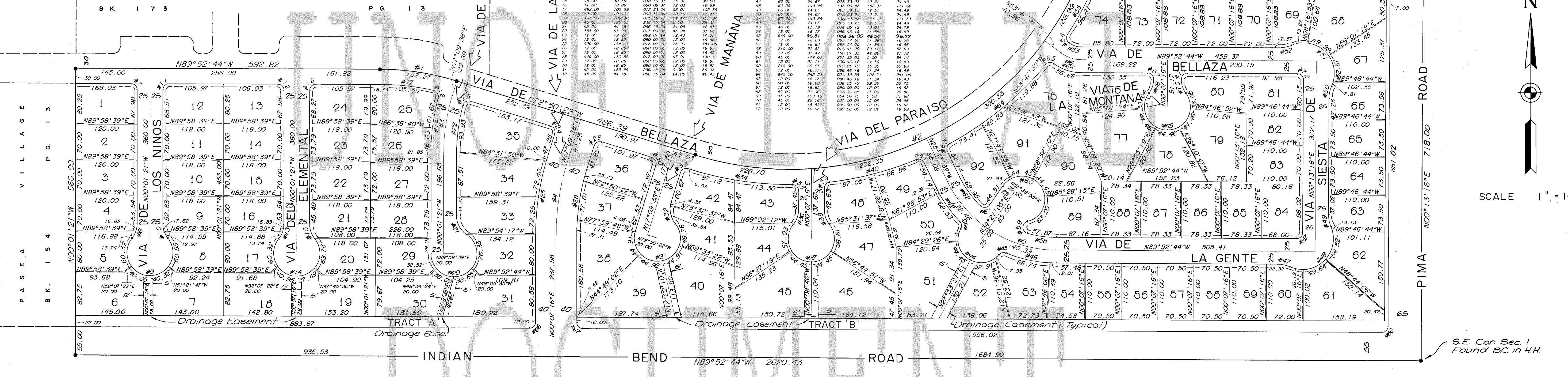
A SUBDIVISION OF PART OF THE S 1/2 SE 1/4 OF SECTION 1, T2N, R4E, G & SRB & M
MARICOPA COUNTY, ARIZONA



STATE OF ARIZONA
County of Maricopa
I hereby certify that the with-
in instrument was filed and re-
corded at request of
American Eng.
MAY 19 1977 - 11 00
in Book 190
on page 5
Witness my hand and official
seal: L. C. Day and year aforesaid.
L. C. Day
County Recorder
Deputy Recorder

LOCATION MAP

SANDS SCOTTSDALE THREE
BK 173 PG 13



SCALE 1" = 100'

DEDICATION

State of Arizona
County of Maricopa

Know all men by these presents: That Lawyers Title of Arizona, an Arizona corporation, as Trustee, has subdivided under the name of Carriage Square a part of Sands Scottsdale a subdivision of part of the S 1/2 SE 1/4 of Section 1, T2N, R4E, G & SRB & M, Maricopa County, Arizona as shown hereon and hereby publishes this plat as and for the plat of said Carriage Square and hereby declares that said plat sets forth the location and gives the measurements and dimensions of the lots, tracts, streets, and easements constituting same and that each lot, tract, and street shall be known by the number, letter or name that is given respectively on said plat, and Lawyers Title of Arizona, as Trustee, hereby dedicates to the public, for use as such, the streets shown on said plat and included in the above described premises. Easements are dedicated for the uses shown.

In witness whereof Lawyers Title of Arizona, as Trustee, has hereunto caused its corporate name to be signed and its corporate seal to be affixed by the undersigned Trust Officer, thereunto duly authorized this 10th day of MAY A.D., 1977.

LAWYERS TITLE OF ARIZONA AS TRUSTEE

John A. Finch
Trust Officer

ACKNOWLEDGEMENT

State of Arizona
County of Maricopa

Before me this 10th day of MAY, 1977, personally appeared JOHN A. FINCH who acknowledged himself to be a Trust Officer of the Lawyers Title of Arizona and that he as such officer, being duly authorized so to do, executed the foregoing instrument for the purposes therein contained by signing the name of the corporation as Trustee, by himself as such officer.

In witness whereof I hereunto set my hand and official seal.
My commission will expire: 3-6-79

ENGINEER'S CERTIFICATE

I, E. CLAIR GARDNER hereby certify: that I am a Registered Civil Engineer in the State of Arizona; that this map consisting of 1 sheet, correctly represents a survey made under my supervision during the month of January, 1977; that the survey is true and complete as shown; that all monuments shown actually exist or will be set as shown; that their positions are correctly shown and that said monuments are sufficient to enable the survey to be retraced.

E. Claire Gardner
E. CLAIR GARDNER PE-5334

AMERICAN ENGINEERING CO.
PHOENIX ARIZONA

APPROVAL

Approved by the Council of the
City of Scottsdale, Arizona, this 3rd day
of May, 1977.

By: *William C. Jenkins*
Mayor

Attest: *John Day*
Clerk

I hereby certify that this plat
substantially conforms to the approved
preliminary plat.

By: *John A. Finch* 5/18/77
Planning Director Date

I hereby certify that all engineer-
ing conditions and requirements of the
ordinance have been complied with.

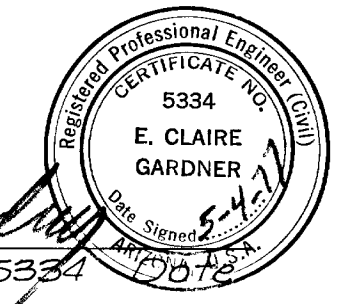
By: *David C. Day* 5-16-77
City Engineer Date

NOTE: There is hereby dedicated
that portion of the premises identified
as Tract 'A' and Tract 'B' to the uses as
shown in the declaration of covenants,
Conditions and Restrictions for Carriage
Square a part of Sands Scottsdale to be
hereafter recorded. Tract 'A' and Tract 'B'
are not dedicated to the use of the
general public.

• Indicates corner of this subdivision.

NOTE: Construction within
easements shall be limited to utilities
and wood, wire or removable section
type fencing.

Electric lines to be constructed under-
ground as required by Arizona
Corporation Commission General
Order U-48.



190-5

190-5