



BEST OF BUDDIES

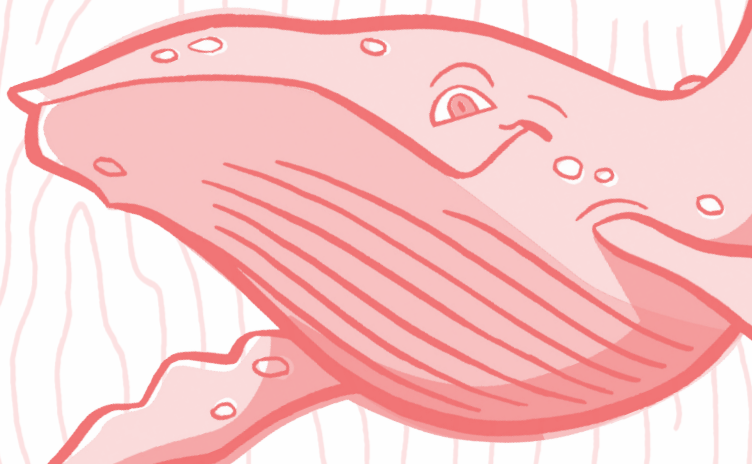
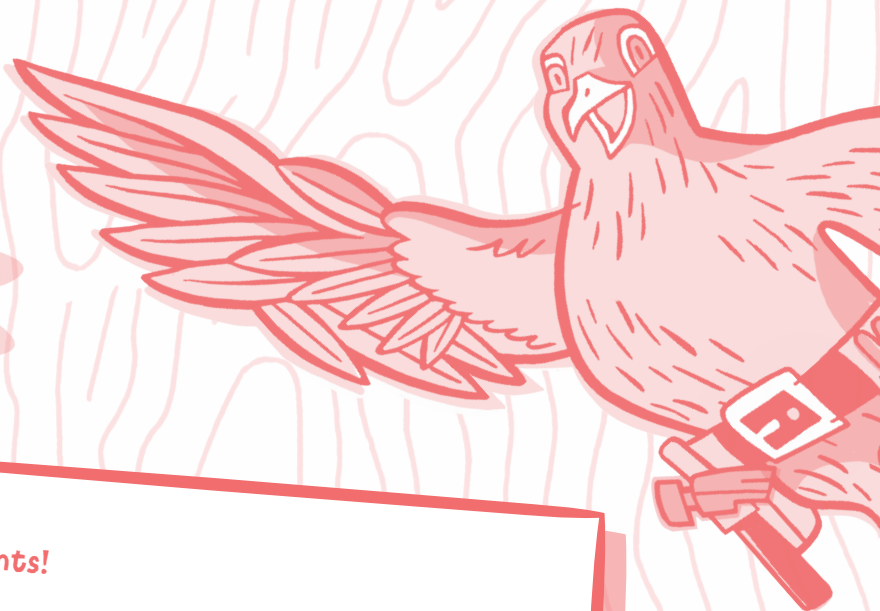
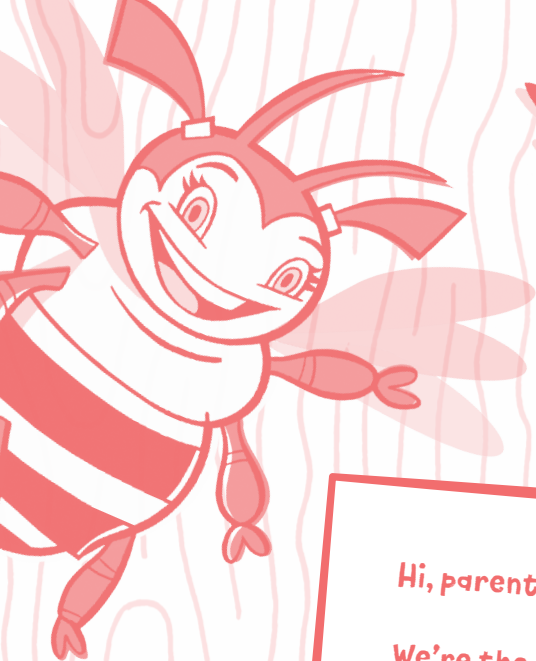


GOD'S MIGHTY MAKERS

activity -book-



preschool



Hi, parents!

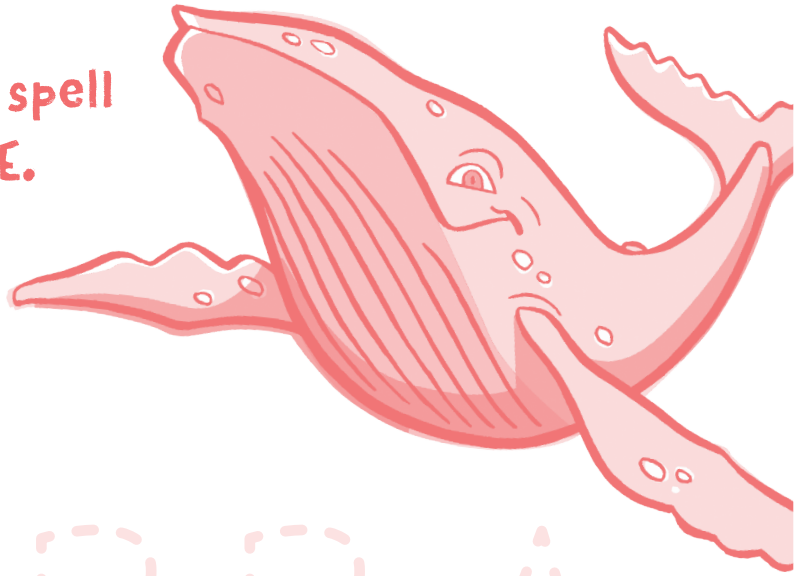
We're the **BEST OF BUDDIES!** We're here together because we're all makers—we love to use God's gifts to make things.

As your children learn creative skills like coloring and tracing, we're going to help them learn that God made them for a creative purpose, too. That's why we Buddies are here: to help kids grow in God's love.

This activity book is full of happy pages just for them. If they need help, encourage them to ask you. (You can do it!) Now give them a bucket of crayons, and let them jump in!

Trace the Letters

Trace the letters to spell
BUBBA and WHALE.



BUBBA

WHALE

God is always with you. (Joshua 1:9)

CIRCLE the Buddy
whose name STARTS with a **D**.

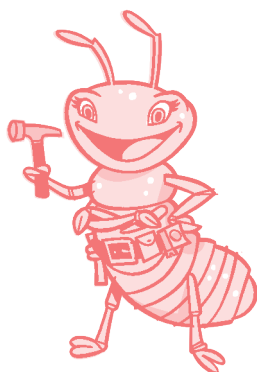
Abbee



Chewy



Tina



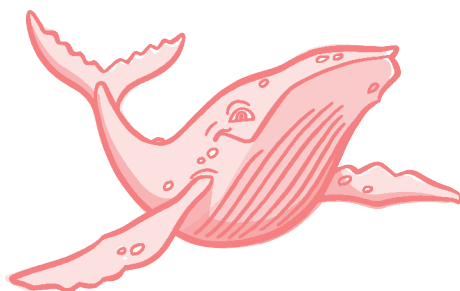
Skyler



Decker

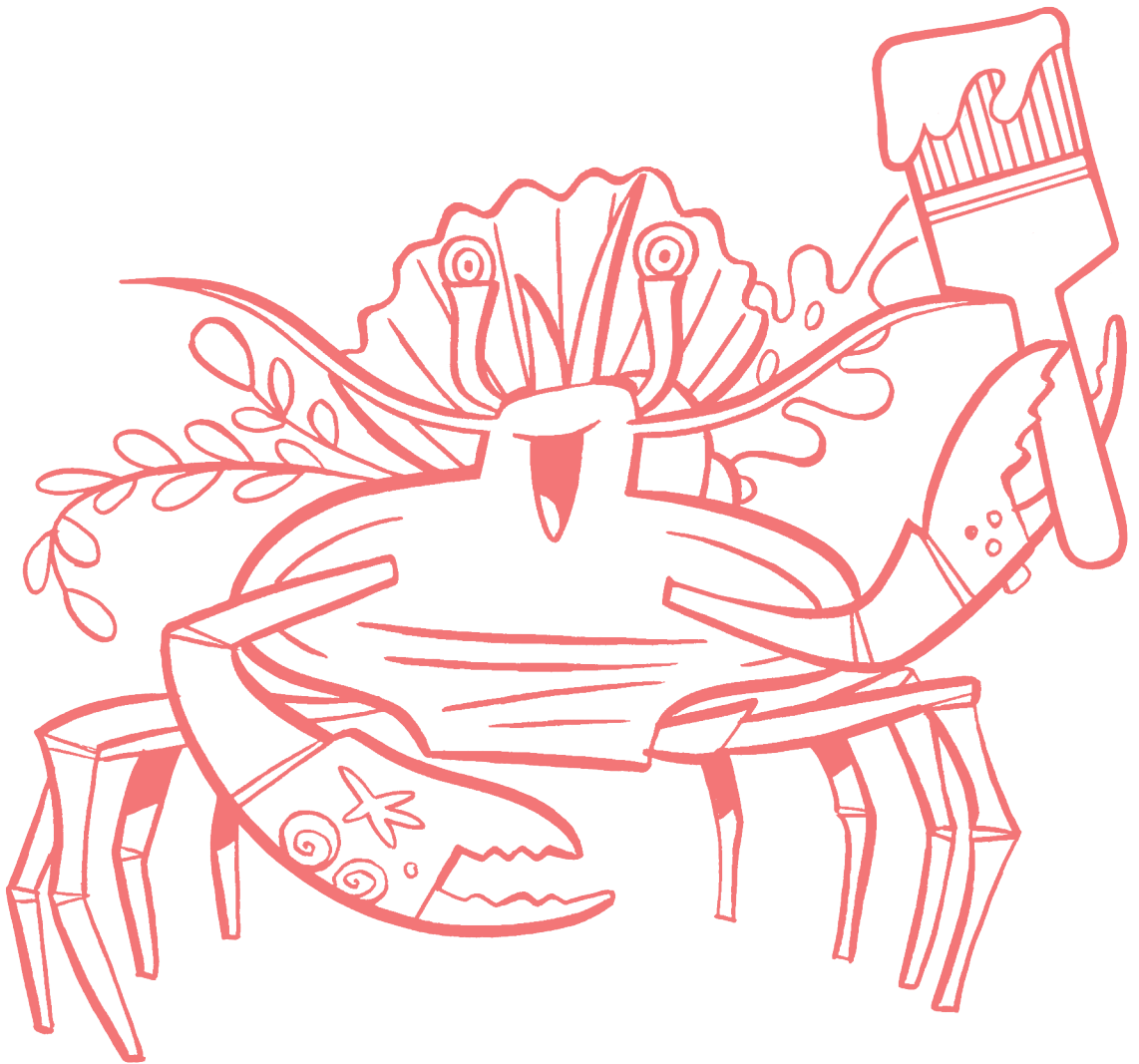


Bubba



God made you. (Psalm 139:14)

COLOR DECKER



God made you. (Psalm 139:14)

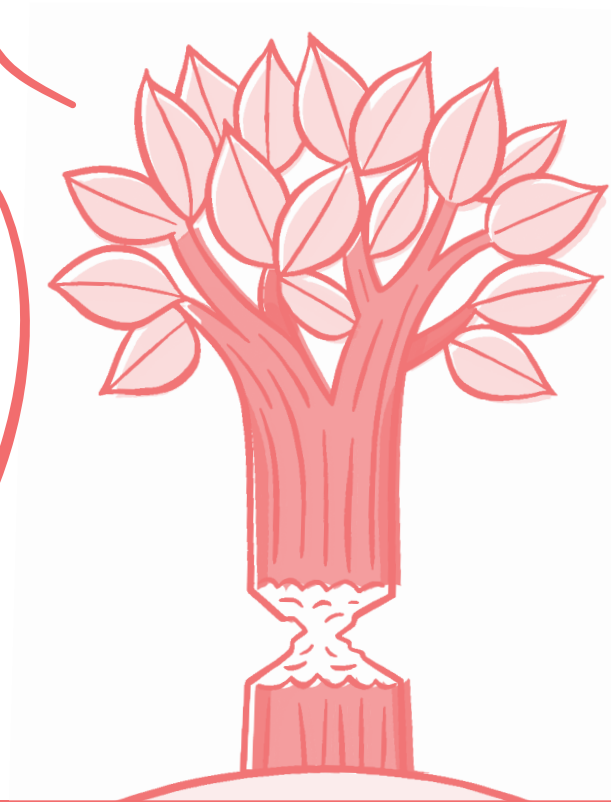
Make an **X** on FIVE BEES
in the picture.



God made you for a reason. (Jeremiah 29:11)



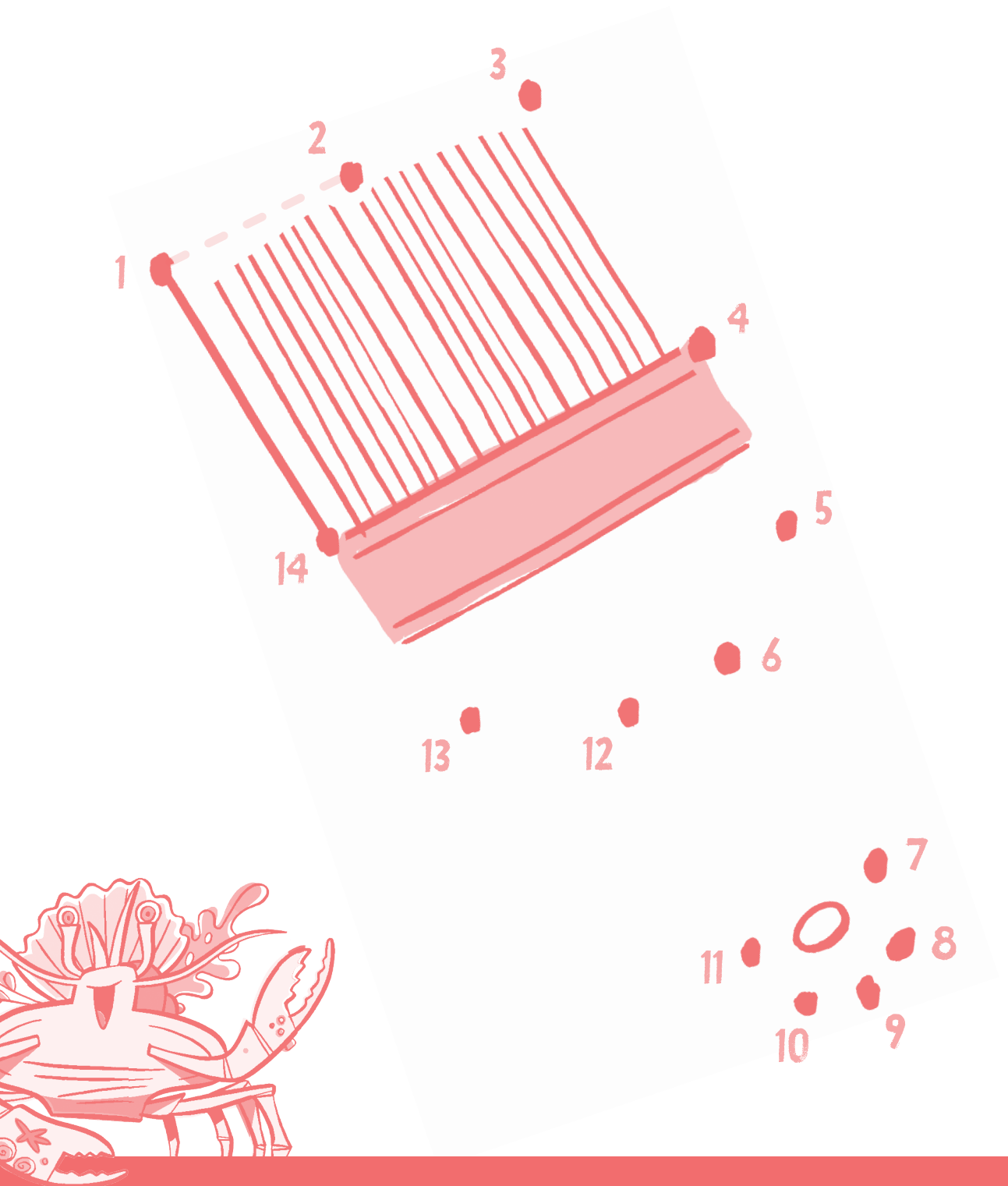
Trace the path to help CHEWY
find the TREE.



God loves you! (1 John 3:1)

CONNECT THE DOTS to show
Decker's favorite tool.

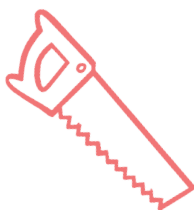
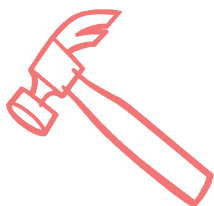
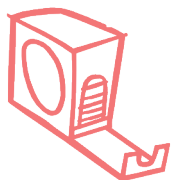
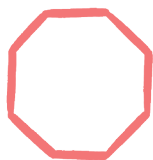
Then color it your
FAVORITE COLOR.



God made you. (Psalm 139:14)

ALL the Buddies Love to smile

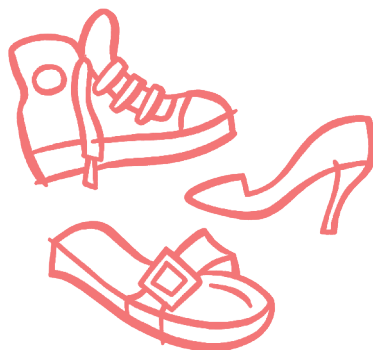
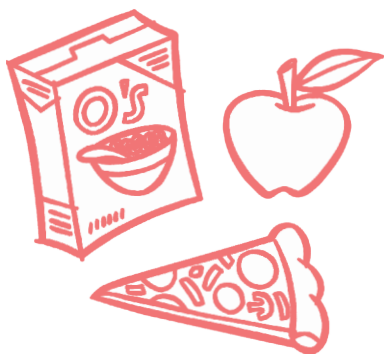
Circle the TWO things
that are the SAME.



God made you for a reason. (Jeremiah 29:11)

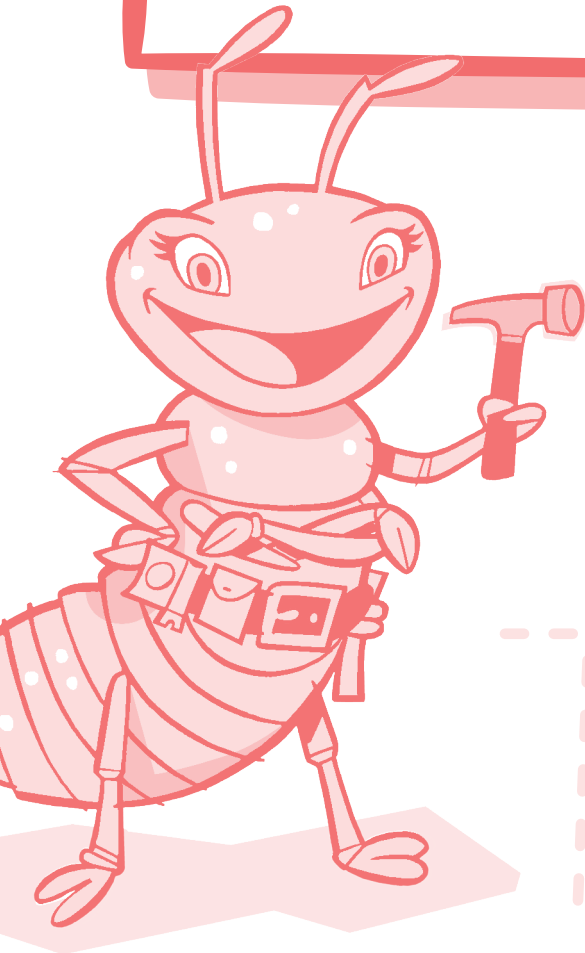
SKYLER LOVES TO make nests.

Circle the GROUP of
things you use to
MAKE stuff.



God will always love you. (Psalm 89:2)

Trace the Letters



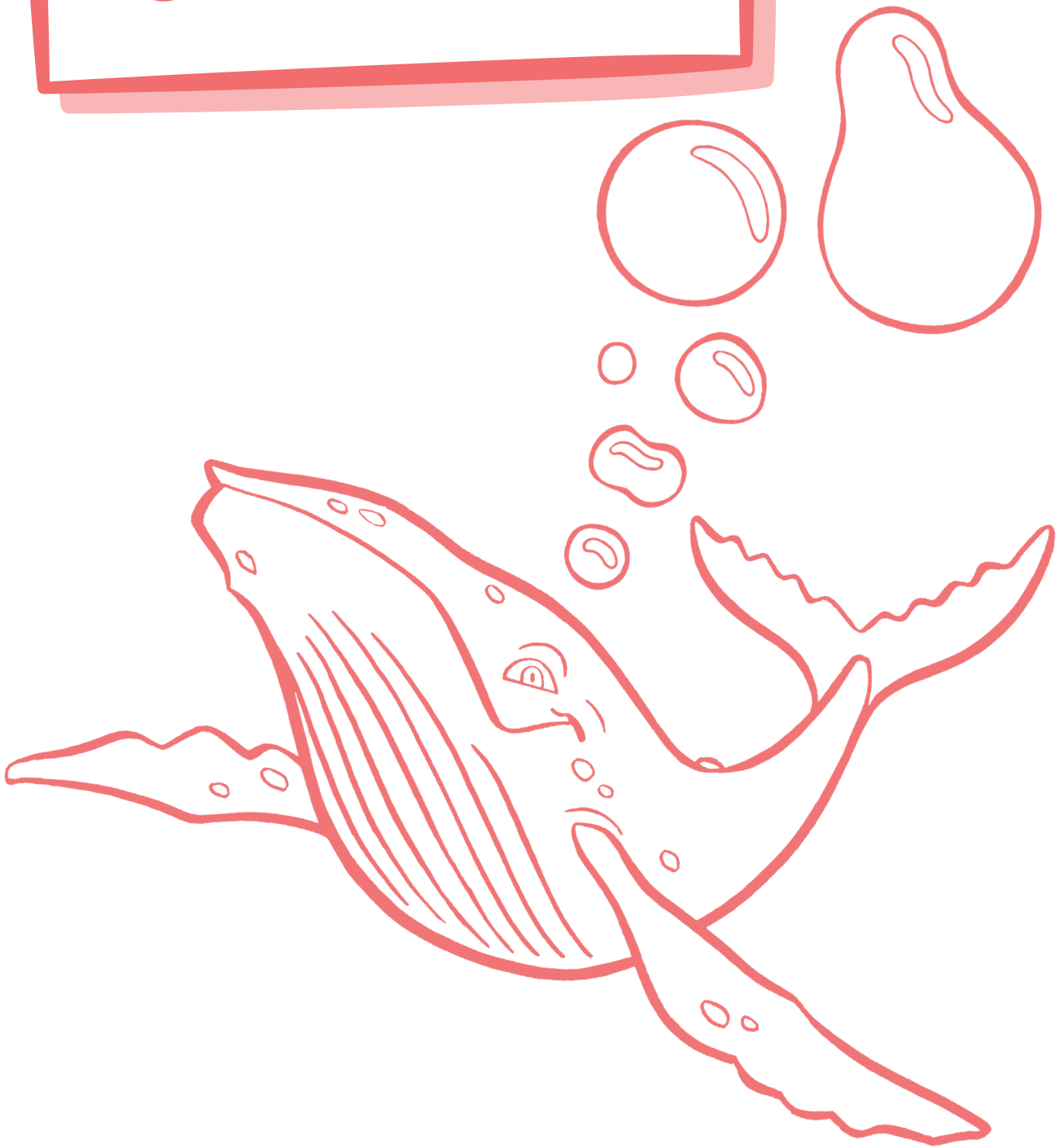
Trace the letters to
spell TINA and TERMITE.

TINA

TERMITE

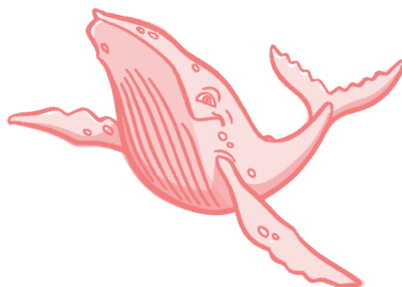
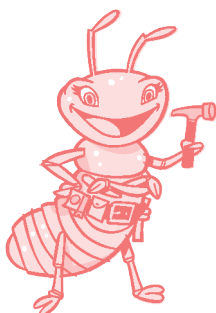
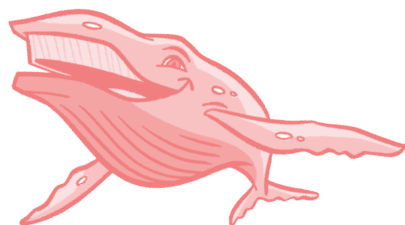
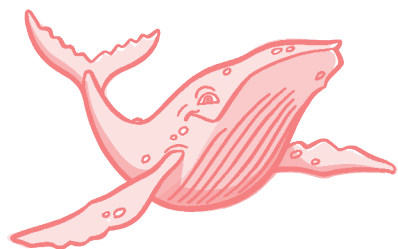
God is for you. (Romans 8:31)

COLOR Bubba



God is always with you. (Joshua 1:9)

Make an **X** on **FOUR WHALES**
in the picture.

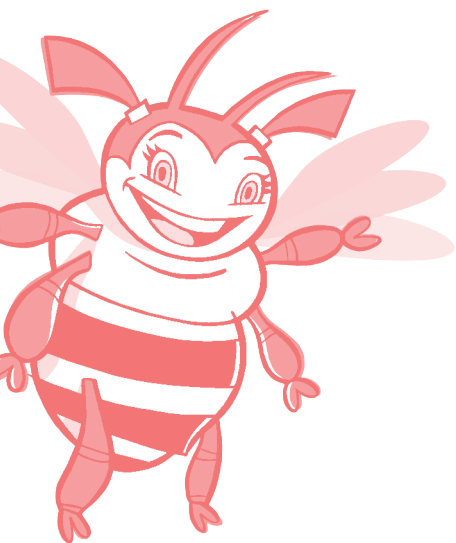


God is always with you. (Joshua 1:9)

Trace the path
to help SKYLER
find his NEST.

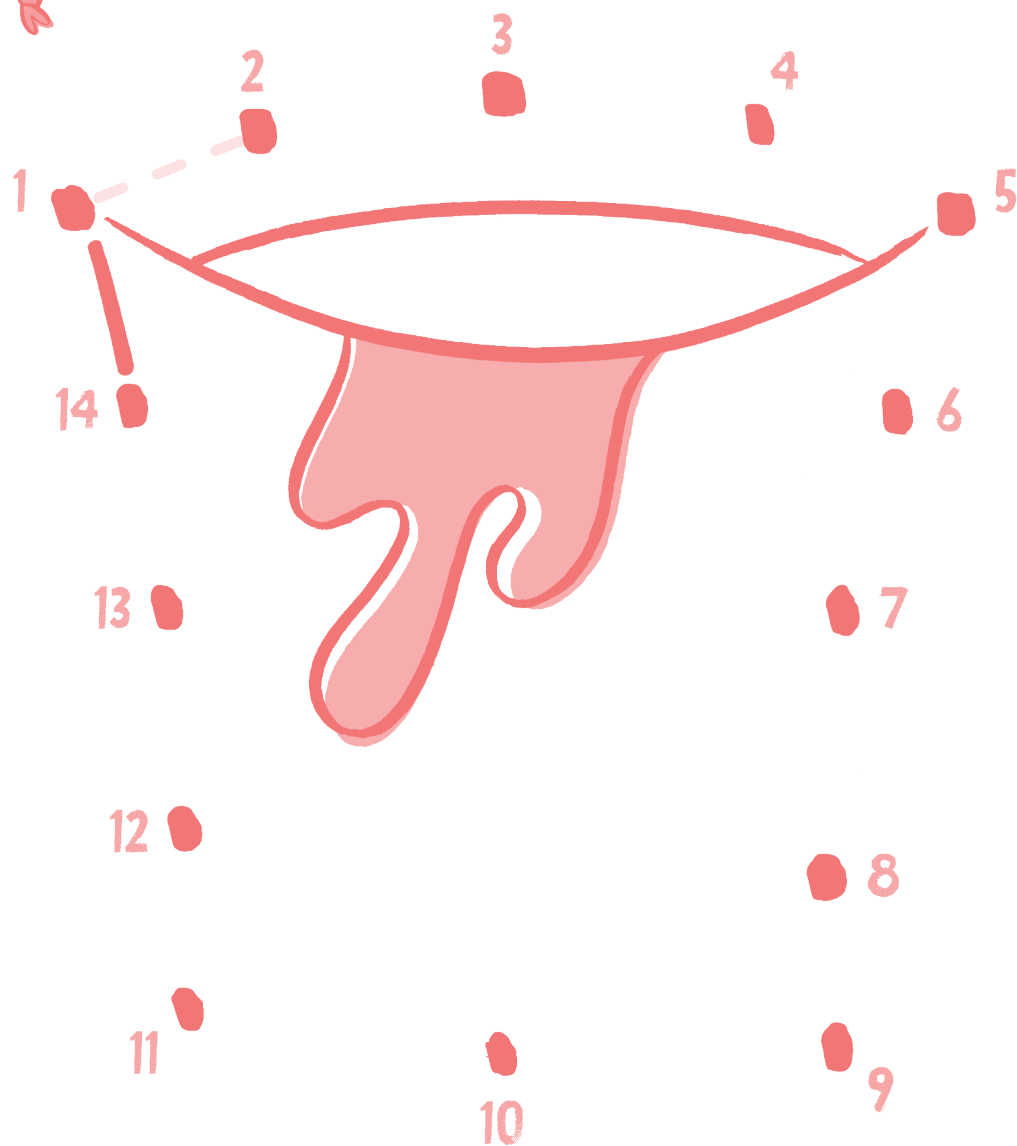


God will always love you. (Psalm 89:2)



CONNECT THE DOTS to show
Abbee's bucket.

What goes **IN**
Abbee's bucket?



God made you for a reason. (Jeremiah 29:11)

COLOR each Buddy who is BIGGER.



God made you for a reason. (Jeremiah 29:11)