

Coalition for a Healthy Oldham County
Community Health Needs Assessment and
Community Health Improvement Plan
2019-2022



Serving the Citizens of Oldham County, Kentucky

The Coalition for a Healthy Oldham County's vision is to create and sustain an engaged community where individuals have the ability to pursue a safe, healthy and independent lifestyle including opportunities for recreation and freedom from substance abuse.

<http://www.coalitionforahealthyoc.com/>

Table of Contents

Letter from the Community Assessment Team	3
Community Health Assessment Process	
Methodology	4
Organizing Community Partners	5
Visioning Process	6
Community Health Status Assessment	7
County Demographics	7
Health Outcomes	7
Health Behaviors	7
Chronic Illness	8
Access to Care	8
Physical Environment	8
Additional Data to Consider	9
Community Themes and Strengths Assessment	10
Forces of Change Assessment	12
Local Public Health System Assessment	12
Community Health Improvement Plan Process	13
Methodology	13
Strategic Issue Identification/Goals and Objectives	14
Communication and Distribution Plan	15
Appendix	16
Appendix 1: Community Health Status Assessment	16
Appendix 2: Community Survey Tool	25
Appendix 3: Local Public Health System Assessment	29
Appendix 4: CHSA- Additional Charts and Figures	32

Letter from the Community Assessment Team

The Coalition for Healthy Oldham County was established in February 2011 to form community partnerships that would address the health and safety of our community. The Coalition is supported by the Oldham County Health Department, who originally organized for success through developing partnerships, but depends on the strength of these partnerships to complete the public health system. These dedicated partnerships consist of committed citizens from a cross section of disciplines. The coalition decided to follow the community health improvement planning model developed by the National Association of County and City Health Officials (NACCHO) called MAPP (Mobilizing for Action through Planning and Partnerships). Simply stated, the coalition wanted to assess the community's needs before implementing an improvement plan.

Our partners were dedicated to completing a broad range of assessments and developing a “real-time snapshot” of our county's health and safety status. Our Community Health Assessment (CHA) not only provides a picture of the current health status of our community, but it also leads us to interventions for improving the health and safety of our residents. These improvements are a direct result of the collaboration of many dedicated people. This process was repeated in 2015 and again in 2018 to assess the current needs of the community. After developing a vision statement, the coalition began working on each of the four MAPP assessments. Analyzing the data from these assessments facilitated many conversations which led to developing long-term strategic initiatives. These initiatives contain detailed goals and objectives focused on the most significant health issues in our community. By prioritizing these goals, our partnerships can coordinate and properly allocate funds where they will have the most impact.

We welcome your feedback to our Community Health Assessment and Improvement Plan, and encourage you to learn more about the Coalition for a Healthy Oldham County's partnerships. Please visit our website at: www.coalitionforahealthyoc.com/

Sincerely,
Your Community Assessment Team

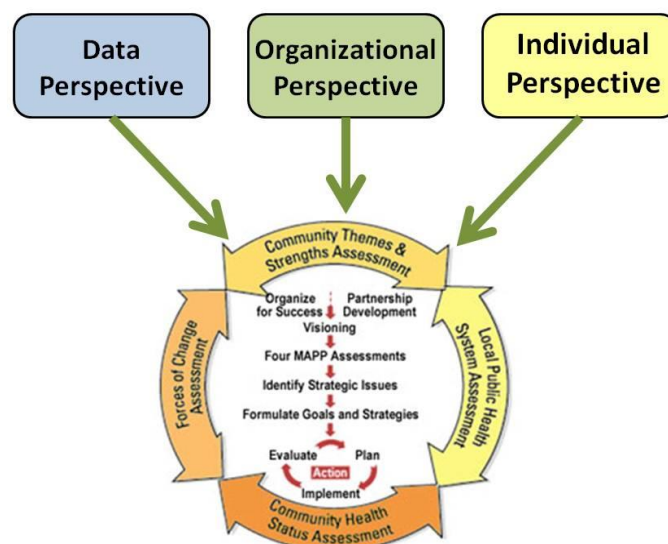


Community Health Assessment Process

Methodology

The Coalition for a Healthy Oldham County utilized a community health assessment process based on Mobilizing for Action through Planning and Partnerships (MAPP). MAPP is a community-driven strategic planning process which helps communities apply strategic thinking to prioritize public health issues and identify resources to address them. MAPP is not an agency-focused assessment process; rather, it is an interactive process that can improve the efficiency, effectiveness, and ultimately the performance of local public health systems. The assessments used in the MAPP process include Community Health Status Assessment, Community Themes and Strengths Assessment, Forces of Change Assessment, and the Local Public Health System Assessment.

The Coalition for a Healthy Oldham County augmented the MAPP process with a Three Perspective approach to gathering information. Data gathered in conjunction with the Community Health Status Assessment provided a Data Perspective on the health of each community. Information gathered during Community Forums, primarily attended by representatives of community partner organizations, provided the Organizational Perspective. In an effort to add the perspective of individual citizens of Oldham County, both paper and electronic surveys were distributed through partner organizations and their clientele- Examples include Dare to Care, patients and families of the local health department clinic services, three local library branches and managed care organizations. Information from these surveys provided the Individual Perspective. In addition, the Local Public Health System Assessment was completed in Oldham County utilizing the asset mapping approach. See results in Appendix 3.



Organizing – Community Partners (November 2018)

Aetna Better Health of KY
Baptist Health LaGrange
Bluegrass Family Wellness
CareSource
Centerstone
Community Counselors
Community Members, including parents and youth
Greenways of Oldham County
Hope Collaborative
Hosparus Health
KIPDA
KY Cancer Program
KY Career Center
KY One Health/ Our Lady of Peace
LaGrange Police Department
Local Businesses
Metro United Way
Oldham County Board of Education
Oldham County Board of Health
Oldham County Chamber of Commerce
Oldham County Fiscal Court
Oldham County Health Department
Oldham County Police Department
Oldham County Public Library
Oldham Era
Operation: Parent
OVEC Head Start
Passport Health Plan
Pharmacy Representative
Southeast Christian Church
Tri County Community Action Agency
University of Kentucky Cooperative Extension Service
Volunteers of America
WellCare Health Plans
Youth Linking Oldham County (YLOC)

Visioning Process: What would a healthy Oldham County look like?

Vision Statement:

The Coalition for a Healthy Oldham County's vision is to create and sustain an engaged community where individuals have the ability to pursue a safe, healthy and independent lifestyle including opportunities for recreation and freedom from substance abuse.

The MAPP process includes revisiting the vision statement with input from coalition partners. The Vision Statement was originally developed by coalition partners in 2012 and has been revisited numerous times throughout the Coalition's existence, with the most recent update in March 2018.



Community Health Status Assessment

Data Perspective: August 29, 2018

County Demographics

Table One summarizes the demographic distribution among Oldham County residents and compared these figures to Kentucky and top U.S. performer aggregate totals. As of July 1st, 2017, Oldham County reported a population size of 66,415, which was about 1.5% of the total state population. Age distribution across local, state and national figures remained consistent, with the largest portion of the population falling within the 18-64 age range. Of the total population within Oldham County, 91.5% identify as Caucasian (4.6% Black or African American, 0.4% American Indian and Alaska Native, 1.8% Asian Alone, 1.7% Two or More Races). Additionally, 4% identify as Hispanic or Latino and 4.4% indicate that languages other than English are spoken at home. Education attainment within Oldham County was heavily skewed when compared to state and national averages. From 2012-2016, 92.8% of Oldham Countians had attained a high school degree or higher, while 39.8% had attained a bachelor's degree or higher.

The median household income from 2012-2016 was \$86,324, which was 1.9 and 1.6 times higher than state and national averages, respectively. The percent of individuals reported as “in poverty” was drastically lower than larger population estimates [Oldham (5.9%), Kentucky (18.5%), US (12.7%)]. Food insecurity within the county was also significantly lower when compared to other percentage totals. Of county residents experiencing some level of food insecurity for 2016, Oldham County identified 8%, while Kentucky and the United States reported 15.5% and 12.9%, respectively.

Health Outcomes

Table 2 examines data collected regarding length of life, quality of life and maternal and child health. Oldham County reported a significantly lower count of years of potential life lost (YPLL) when compared to state and national averages. The county has also experienced a consistent yearly decrease in this number. Factors such as healthy food environments, increased physical activity and access to care have all contributed to this trend. Oldham County performed similarly to top U.S. performers in quality of life variables, which include poor or fair health, poor physical health or mental health days and low birthweight. Child mortality rates and premature age-adjusted mortality were also consistent with top U.S. performers. Linkage to care, insurance accessibility and early childhood education are all major factors in maintaining these low figures.

Health Behaviors

Table 3 denotes health behaviors having the greatest impact on life longevity for Oldham County residents. Areas of strength include food environment index, access to exercise opportunities and the percentage of teen births. Areas to explore include adult smoking, adult obesity and reported excessive drinking. Oldham County consistently ranks as one of the healthiest counties in Kentucky. Food environment index, which examines food choices, health and well-being, and community characteristics all contribute to the overall score. Oldham County received the same index score (8.6) as top U.S. performers. The county also reported rates higher than state and national averages for access to exercise opportunities. This health

behavior contributes to increased physical activity, which is associated with lower risks of cardiovascular disease, stroke, diabetes and obesity.

As the reported percentage of adult obesity has steadily increased over time at the county level (Figure 1), rates remained below Kentucky averages. One health behavior that could contribute to adult obesity is self-reported physical inactivity. Oldham County maintained averages well below Kentucky rates and ranked similarly with top U.S. performers (Figure 2). Additionally, the trend in Oldham County has been decreasing for the last 14 years and is projected to continue. Factors that could support this decrease include the accessibility of exercise opportunities and proximity to parks.

When evaluating self-reported excessive drinking, Oldham County maintained 3 percentage points higher than the Kentucky average and 6 percentage points higher than top U.S. performers in 2018. Figures 3 and 4 show the trends in reported excessive drinking for county, state and national survey respondents. Overall, Oldham County performed much higher than other included averages. Alcohol-impaired driving deaths within Oldham County could be of concern when reviewing excessive drinking data. Of deaths reported within this category, Oldham County reported much higher rates than those seen statewide, but was trending downward from 2008-2016.

Chronic Illness

The prevalence of diabetes within adults aged 20 and older in Oldham County is 12%. This rate is above that reported for top U.S. performers and rivals Kentucky averages. Over a nine-year period, Oldham County was one of the few remaining counties within the state to report less than 10% of the population that had been diagnosed with diabetes. Figure 5 provides a map of Kentucky counties and their reported averages.

Another chronic illness measure that was identified during the community health assessment was cancer incidence. Between 2012-2016, Oldham County reported at least six cancer sites of concern: prostate (males only), breast, melanoma of the skin, colon and rectum, kidney and pelvis and miscellaneous sites. The age-adjusted rate for “all site” cancer reports within Oldham County was much higher than that reported for Kentucky. Table 4 denotes the data collected from the Kentucky Cancer Registry for a five-year profile on cancer incidence rates.

Access to Care

Table 5 provides an overview of access to clinical care services. Overall, Oldham County has reported a yearly decrease among the percentage of the county population under 65 without health insurance. When stratified by age, uninsured adults under 65 and uninsured children under the age of 19 both decreased over time. The proportion of the population to mental health, dental, and primary care providers was fairly large, indicating potential difficulty in access to care within county-based facilities.

Table 6 summarizes community utilization of mental health services. On average, almost twelve Oldham County residents utilize in-patient psychiatric hospital services on a daily basis. The availability of these services both locally and regionally can contribute to increased awareness of mental health needs and decrease the stigma.

Physical Environment

Factors that help assess the physical environment include air pollution (particulate matter), drinking water violations, housing issues and reported commutes to work that are driven alone (Table 7). Each of these factors contribute to the air quality assessment that could impact respiratory illness incidence and preventable hospitable stays. In 2018, Oldham County measured a 10.9 density of fine particulate matter per day. Top U.S. performers reported 6.7, while the Kentucky average was 10.0. Possible reasons for this higher average include the proximity to interstates and railroads. Other variables such as commute time and travel companionship also outranked state and national trends.

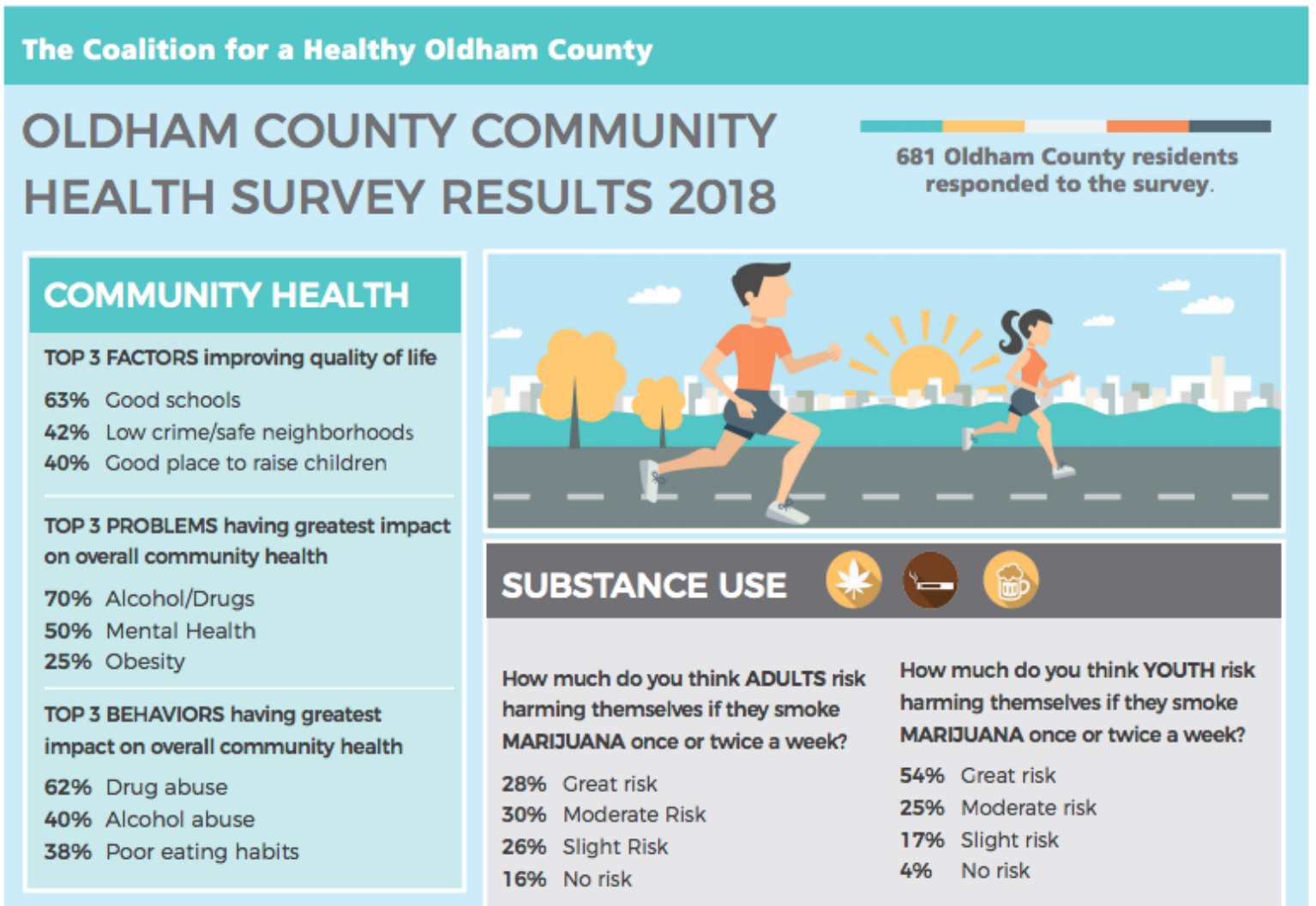
Additional Data to Consider:

Additional data points were prepared prior to the assessment forum to examine all possible needs of the community. Drug use data was gathered from KIPRC and is displayed in Figures 5 and 6. Figure 5 identifies acute drug poisoning (i.e., overdose) per substance. Overall, “any substance” and “other specified and unspecified drugs” were coded more so than others. There was an increase from 2015 to 2016 in heroin association. Figure 6 identifies the increase in drug dependence coded within inpatient hospitalizations and emergency department visits. Increases were identified in cannabis abuse, amphetamine abuse and abuse denoted as “any substance”.

Other data points provided during the supporting data analysis are provided in Appendix 1.

Community Themes and Strengths Assessment

The Community Themes and Strengths Assessment was distributed to Oldham County citizens via distributed through partner organizations and their clientele – Examples include Dare to Care, patients and families of the local health department clinic services, three local library branches and managed care organizations. Six-hundred eighty-one (681) responses were received. Questions covered factors that improve the Quality of Life in Oldham County, Problems that Impact Community Health, Behaviors with the Greatest Impact on Community Health, Safety Concerns, and questions related to Substance Use. See Appendix 2 for the survey tool.



SAFETY

TOP 3 SAFETY CONCERNS in Oldham County

- 75% Alcohol and drug use
- 36% School violence
- 33% Unsafe driving



Are safe walking paths important to you?

- 94% YES
- 6% NO

Do you think completion of the GREENWAYS PROJECT should be a community priority?

- 75% YES
- 25% NO

How much do you think ADULTS risk harming themselves if they VAPE/use E-CIGARETTES?

- 52% Great risk
- 35% Moderate Risk
- 11% Slight Risk
- 2% No risk

How concerned are you by underage drinking in Oldham County?

- 43% Very concerned
- 43% Somewhat concerned
- 9% Not very concerned
- 5% Not sure

Are you aware of Oldham County's Social Host Ordinance?

- 66% YES
- 34% NO

How much do you think YOUTH risk harming themselves if they drink ALCOHOL once or twice a week?

- 69% Great risk
- 23% Moderate Risk
- 7% Slight Risk
- 1% No risk

Is it okay for youth under the age of 21 to drink if they are at home supervised by an adult?

- 14% YES
- 86% NO

ITEMS OF NOTE

- In 2018, Oldham County residents identified the following as the **"top three factors that most improve the quality of life"** in Oldham County: 1) good schools, 2) low crime/safe neighborhoods, and 3) good place to raise children. These were the top three responses in 2015, as well.
- The three primary **"problems having the greatest impact on overall community health"** in Oldham County in 2018 were cited as: 1) alcohol/drugs, 2) mental health problems, and 3) obesity. Notably, in 2015, a much lower percentage of respondents identified 'mental health problems', and it was ranked in fifth place. Additionally, the recent data indicate that in 2018, a significantly larger proportion of respondents view alcohol/drugs as impacting community health than in 2015.
- The overall perceived impact of substance use has increased since 2015. This year, "drug abuse" and "alcohol abuse" were cited as the top two **"behaviors having the greatest impact on overall community health"**; "poor eating habits" was the third.
- In 2018, school violence emerged as a **top safety concern** in Oldham County. Alcohol and drug use remains a top-tier issue of concern, as does unsafe driving.
- To assess the community's perception of risk associated with **adult use of e-cigarettes**, a new question was added to this year's survey. Nearly 88% of respondents perceive moderate or great risk associated with the use of e-cigarettes/vaping.

Forces of Change Assessment

A facilitated discussion was held in March 2018 with coalition members. Participants responded to the question “What’s happening in Oldham County that will affect our future?”

Ideas included:

Forces of Change:

- State Pension Reform
- Misreporting of diseases, high turnover in physician offices
- Medicaid cutbacks
- Potential legalization of medical marijuana in Kentucky
- E-cigarette use/vaping
- Opioid Abuse
- Environmental Impact/sustainability
- School gun violence
- Hepatitis A outbreak in Kentucky
- Youth suicide/self-harm

Opportunities:

- Community Gardens
- Greenways Path continuation
- Drive-in movie theater
- Student involvement with HOC (YLOC)
- E-cigarette education/ordinances
- Policy change related to gun violence/make schools safety
- Community Partnerships/increased collaboration
- Mentorship programs
- Sources of Strength
- Financial Planning for you (Junior Achievement program)

Local Public Health System Assessment

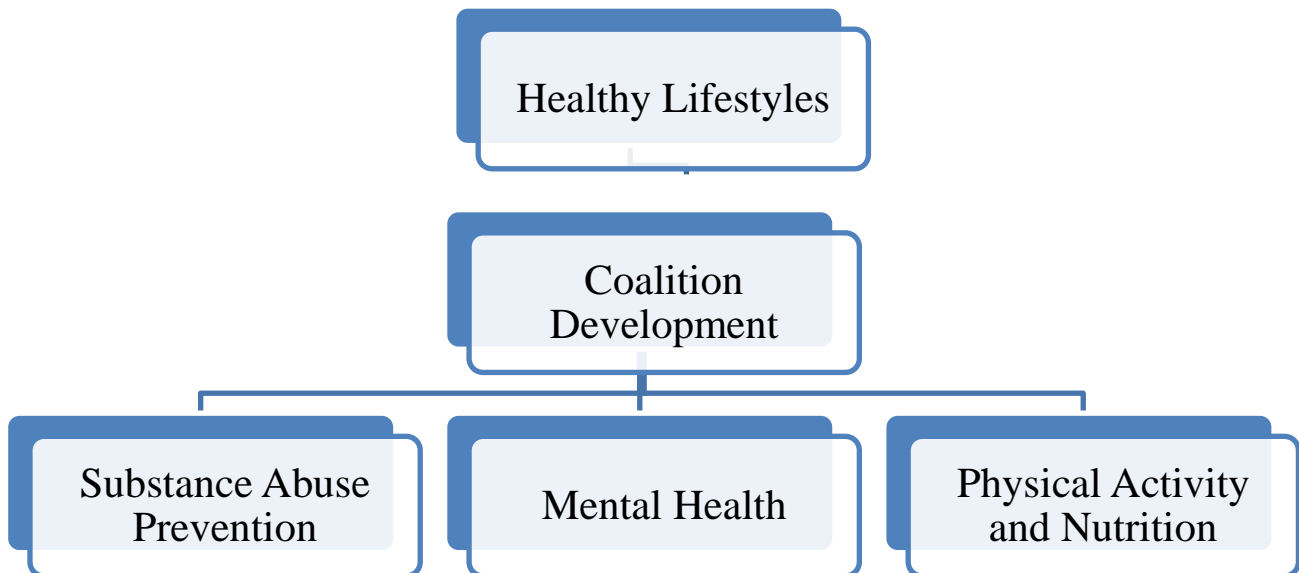
As part of the community needs assessment process, the Coalition for a Healthy Oldham County conducted a Local Public Health Needs Assessment on October 10, 2018 using an asset mapping approach, with nearly 50 community partners in attendance. Public Health System Asset Mapping refers to a community-based approach of assessing the resources and programs of the public health system within a specific community as they relate to the 10 Essential Public Health Services. Once gathered, this asset map of public health system programs and services is distributed to community partners for use in referring citizens in the community to appropriate services. In addition, the Public Health System Asset Map is utilized during the community health improvement planning process to provide a list of assets that can be used toward strategic initiatives or gaps in the system that must be filled before strategic initiatives can be addressed. See Appendix 3 for our Local Public Health System Assessment using this approach. Reactions to the data included, but not limited to: Alcohol, obesity, county growth, mental health, unsafe driving, substance use disorder, parks, homelessness, parenting behaviors, single parent homes, support for age 18 to 31-year-olds, and transportation.



Community Health Improvement Plan Process

Methodology

Continuing the methodology described under the Community Health Assessment Process, the Coalition for a Healthy Oldham County convened community partner groups to synthesize the information obtained in the community health assessment process into strategic initiatives, goals and objectives. Each community group was given information from each of the assessments and organized into the Three Perspectives – data, organizational and individual. From this information, the partners participated in a consensus building activity through which strategic initiatives emerged- Coalition Development, Substance Abuse Prevention, Mental Health, and Physical Activity and Nutrition. In an effort to assure on-going progress toward the strategic initiatives chosen, the group discussed a potential structure for the work:



Strategic Issue Identification/Goals and Objectives

Strategic Initiative #1: Coalition Development

1. By 2021, facilitate inter-agency collaboration and service linkage by hosting 10 community “showcase” presentations highlighting potential new partners at regular HOC meetings and engaging in 10 presentations by HOC Speaker’s Bureau members within the community.
2. By 2020, develop and implement a strategic media plan designed to capture and promote services provided by community partners to the community-at-large, focusing on social media and outreach.
3. By 2020, increase financial sustainability by securing \$10,000 through fundraising efforts.

Strategic Initiative #2: Substance Abuse Prevention

1. By 2021, increase Youth Linking Oldham County (YLOC) membership to 30 active youth and 6 adult sponsors.
2. By 2019, implement the Drug Free Community action plan and apply for years 6-10.
3. By 2020, implement 100% Tobacco Free Schools in Oldham County Public Schools.

Strategic Initiative #3: Mental Health

1. By 2021, increase support for Mentoring, Sources of Strength and Parenting Classes through targeted promotion and education.
2. By 2021, facilitate a community dialogue regarding mental health by compiling and disseminating local resources.
3. By 2021, increase outreach to young adults through two new partnerships with agencies that serve 18-31 year-olds.

Strategic Initiative #4: Physical Activity and Nutrition

1. By 2021, increase participation in the Community Challenge Walk by 20%.
2. By 2021, support a walking and biking culture in Oldham County by hosting a walk/bike event.
3. By 2021, expand the LinkUP Program by two partnerships.

Connection to State and National Health Goals

The Coalition for a Healthy Oldham County has strategic initiatives addressing Tobacco Use and Substance Abuse. These initiatives align closely with state and national priorities. Specifically, [Kentucky State Health Improvement Plan 2017-2022](#) places a heavy emphasis on both Tobacco Use and Substance Abuse. Furthermore, one of the major focus areas in the [CDC Winnable Battles](#) is Tobacco Use.

Communication and Distribution Plan

The Coalition for a Healthy Oldham County's CHA/CHIP document is posted on our [Coalition Website](#) as well as the [Oldham County Health Department Website](#) for community review. The document will also be distributed electronically to all participating community partners. In addition, the staff of Oldham County Health Department will receive an electronic copy for their review and use during health department strategic planning.

Appendix

Appendix 1: Community Health Status Assessment

Data for some variables discussed are presented within two charts due to differing analysis approaches used after 2015. Prior to 2016, BRFSS data was exclusive to landlines and did not provide reliable estimates for all counties. As of 2016, an advanced multilevel modeling approach was used to provide a more accurate scope of variable occurrence within county level data.

Table 1. Community Demographics for Oldham County, Kentucky and United States

Topic	Oldham County	Kentucky	United States
Population			
Population estimates, July 1, 2017	66,415	4,454,189	325,719,178
Age			
Persons under 5 years, percent, July 1, 2017	5.1%	6.2%	6.1%
Persons under 18 years, percent, July 1, 2017	25.4%	22.7%	22.6%
Persons 65 years and over, percent, July 1, 2017	12.7%	16.0%	15.6%
Race and Hispanic Origin			
White alone, percent, July 1, 2017	91.5%	87.8%	76.6%
Black or African American alone, percent, July 1, 2017	4.6%	8.4%	13.4%
American Indian and Alaska Native, alone, percent, July 1, 2017	0.4%	0.3%	1.3%
Asian alone, percent, July 1, 2017	1.8%	1.6%	5.8%
Native Hawaiian and Other Pacific Islander alone, percent, July 1, 2017	0.1%	0.1%	0.2%
Two or More Races, percent, July 1, 2017	1.7%	1.9%	2.7%
Hispanic or Latino, percent, July 1, 2017	4.0%	3.7%	18.1%
Language other than English spoken at home, percent of persons age 5 years+, 2012-2016	4.4%	5.2%	21.1%
Housing			
Owner Occupied Housing Unit Rate, 2012-2016	84.7%	66.8%	63.6%
Median Gross Rent, 2012-2016	\$838	\$690	\$940
Education			
High school graduate or higher, percent of persons age 25 years+, 2012-2016	92.8%	84.6%	87.0%
Bachelor's degree or higher, percent of persons age 25 years+, 2012-2016	39.8%	22.7%	30.8%
Access to Care			
Percent adults age 18-64 without health insurance, 2016	4%	6%	12.4%
Income and Poverty			
Median household income (in 2016 dollars), 2012-2016	\$86,324	\$44,811	\$55,322
Income inequality, Gini index (0 is perfect equality and 1 is maximum inequality), 2015	0.4228	0.4492	0.4350
Persons in poverty, percent	5.9%	18.5%	12.7%
Percent of students on free or reduced lunch, 2016-2017 school year	21.7%	60.8%	---
Unemployment			
The annual average percentage of the workforce that is currently unemployed and actively seeking work, 2016	3.5%	4.1%	4.0%
Food Insecurity			
Estimated percent of population experiencing some level of food insecurity, 2016	8.0%	15.5%	12.9%

Table 2. Health outcome data for Oldham County compared to Kentucky and top U.S. performers.

Health Outcomes	Oldham County	Error Margin	Kentucky	Top U.S. Performers
Length of Life				
Premature Death	4,900	4,300-5,500	9,000	5,300
Quality of Life				
Poor or fair health	13%	12-13%	21%	12%
Poor physical health days	3.6	3.4-3.7	4.8	3.0
Poor mental health days	3.6	3.4-3.7	4.8	3.1
Low birthweight	8%	7-9%	6%	9%
Maternal and Child Health				
Premature age-adjusted mortality	290	260-310	470	270
Child mortality	30	20-40	60	40
Infant mortality	*	*	7	4

Table 3. Health behavior data for Oldham County compared to Kentucky and top U.S. performers.

Health Behavior	Oldham County	Error Margin	Kentucky	Top U.S. Performers
Adult smoking	16%	15-17%	24%	14%
Adult obesity	28%	23-24%	34%	26%
Food environment index	8.6	*	8.6	7.0
Physical inactivity	24%	19-30%	28%	20%
Access to exercise opportunities	95%	*	72%	91%
Excessive drinking	19%	18-20%	16%	13%
Alcohol impaired driving deaths	43%	33-53%	28%	13%
Sexually transmitted infections	200	*	395.2	145.1
Teen births	10	9-12	38	15
Limited access to health foods	7%	*	6%	2%
Drug overdose deaths	16	11-23	10	28
Drug overdose deaths – modeled	8-11.9	*	8-11.9	33.5
Motor vehicle crash deaths	9	7-12	17	9
Insufficient sleep	36%	35-37%	39%	27%

Table 4. 5-year age-adjusted rate profile for Oldham County cancer incidence compared to Kentucky rates.

Site	Oldham County		Kentucky	
	Population at Risk	Age-adjusted Rate	Population at Risk	Age-adjusted Rate
All Sites	319378	593.9	22059918	565.2
Prostate (males only)	169349	140.3	10866950	104.8
Breast	319378	89.8	22059918	81.4
Melanoma of the Skin	319378	66.9	22059918	44.5
Lung and Bronchus	319378	65.8	22059918	92.5
Colon and Rectum	319378	53.4	22059918	52.6
Corpus Uteri (females only)	150029	22.5	11192968	27.1
Kidney and Renal Pelvis	319378	22.1	22059918	21.0
Urinary Bladder, invasive and in situ	319378	21.5	22059918	22.3
Miscellaneous	319378	21.1	22059918	19.4
Non-Hodgkin Lymphoma	319378	16.7	22059918	20.4

* Age-adjusted Cancer Incidence (All Sites), 2012-2016

Table 5. Clinical care access data for Oldham County compared to Kentucky and top U.S. performers.

Clinical Care	Oldham County	Error Margin	Kentucky	Top U.S. Performers
Uninsured	4%	4-5%	7%	6%
Primary care physicians	1,440:1	*	1,510:1	1,030:1
Dentists	2,730:1	*	1,560:1	1,280:1
Mental health providers	1,130:1	*	520:1	330:1
Preventable hospital stays	49	41-56	77	35
Diabetes monitoring	88%	80-96%	86%	91%
Mammography screening	69%	61-78%	59%	71%
Uninsured adults	5%	4-5%	8%	7%
Uninsured children	3%	3-4%	4%	3%
Health care costs	\$9,625	*	\$10,466	*
Other primary care providers	1,873:1	*	885:1	782:1

Table 6. Community utilization of mental health resources within state facilities.

Hospital	Discharges	Patient Days	ADC	ALOS	% Discharges	% Patient Days
Grand Total	408	4,120	11.3	10.1		
The Brook Hospital KMI	109	1,231	3.4	11.3	26.7%	29.9%
Our Lady of Peace	99	936	2.6	9.5	24.3%	22.7%
The Brook Hospital – Dupont	62	441	1.2	7.1	15.2%	10.7%
River Valley Behavioral Health Hospital	2	377	1.0	188.5	0.5%	9.2%
Lincoln Trail Behavioral Health Systems	9	346	0.9	38.4	2.2%	8.4%
Norton Children’s Hospital	28	208	0.6	7.4	6.9%	5.0%
Cumberland Hall	1	42	0.1	42.0	0.2%	1.0%
Ridge Behavioral Health System	6	37	0.1	6.2	1.5%	0.9%
Norton Brownsboro Hospital	9	31	0.1	3.4	2.2%	0.8%
Rivendell Behavioral Health Services	3	29	0.1	9.7	0.7%	0.7%
Frazier Rehab Institute	2	23	0.1	11.5	0.5%	0.6%
Baptist Health LaGrange	2	14	0.0	7.0	0.5%	0.3%
Bourbon Community Hospital	2	14	0.0	7.0	0.5%	0.3%
Baptist Health LaGrange SNF	1	8	0.0	8.0	0.2%	0.2%
Baptist Health Corbin	1	5	0.0	5.0	0.2%	0.1%
Saint’s Mary and Elizabeth Hospital	1	5	0.0	5.0	0.2%	0.1%
St. Elizabeth Fort Thomas	1	4	0.0	4.0	0.2%	0.1%
Norton Audubon Hospital	1	3	0.0	3.0	0.2%	0.1%
Norton Women’s and Children’s Hospital	1	3	0.0	3.0	0.2%	0.1%
Our Lady of Bellefonte Hospital	1	3	0.0	3.0	0.2%	0.1%
Russell County Hospital	1	2	0.0	2.0	0.2%	0.0%
UK Healthcare Good Samaritan Hospital	1	2	0.0	2.0	0.2%	0.0%
Hardin Memorial Health	1	1	0.0	1.0	0.2%	0.0%

Table 7. Physical environment assessment data for Oldham County compared to Kentucky and top U.S. performers.

Physical Environment	Oldham County	Error Margin	Kentucky	Top U.S. Performers
Air pollution – particulate matter	10.9	*	10.0	6.7
Drinking water violations	No	*	*	*
Severe housing problems	9%	8-11%	14%	9%
Driving alone to work	86%	85-87%	82%	72%
Long commute – driving alone	46%	43-49%	29%	15%

Figure 1. Obesity distribution among Oldham County residents compared to Kentucky and United States top performers.

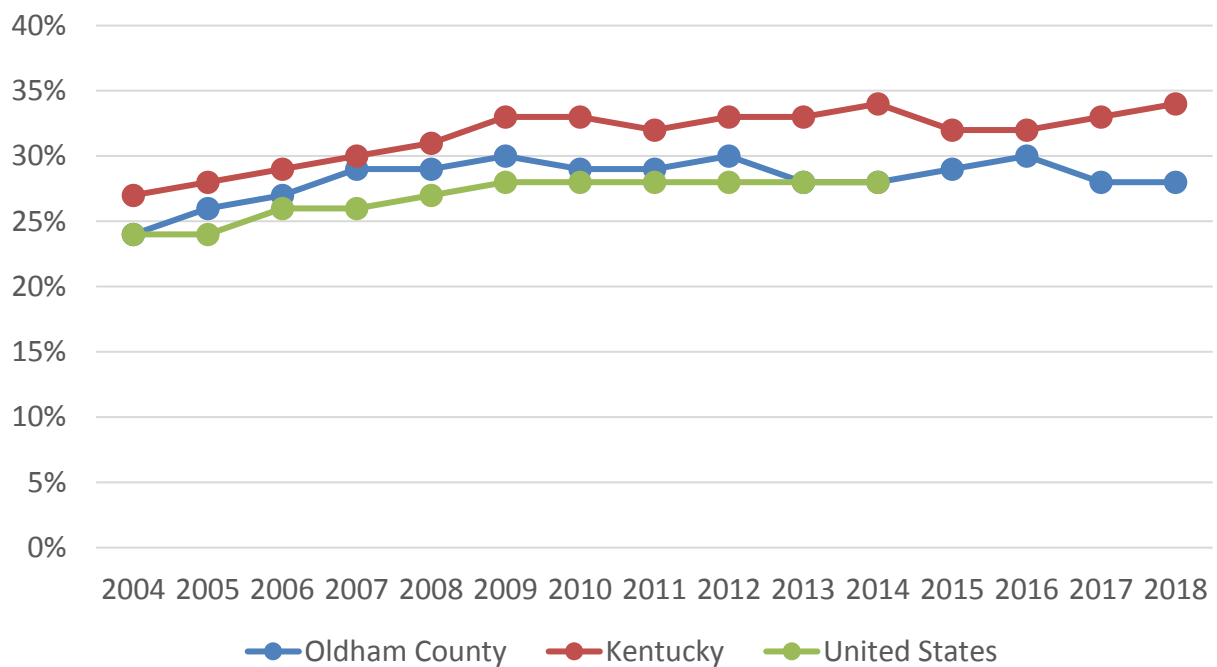


Figure 2. Physical inactivity reporting among Oldham County residents compared to Kentucky and United States top performers.

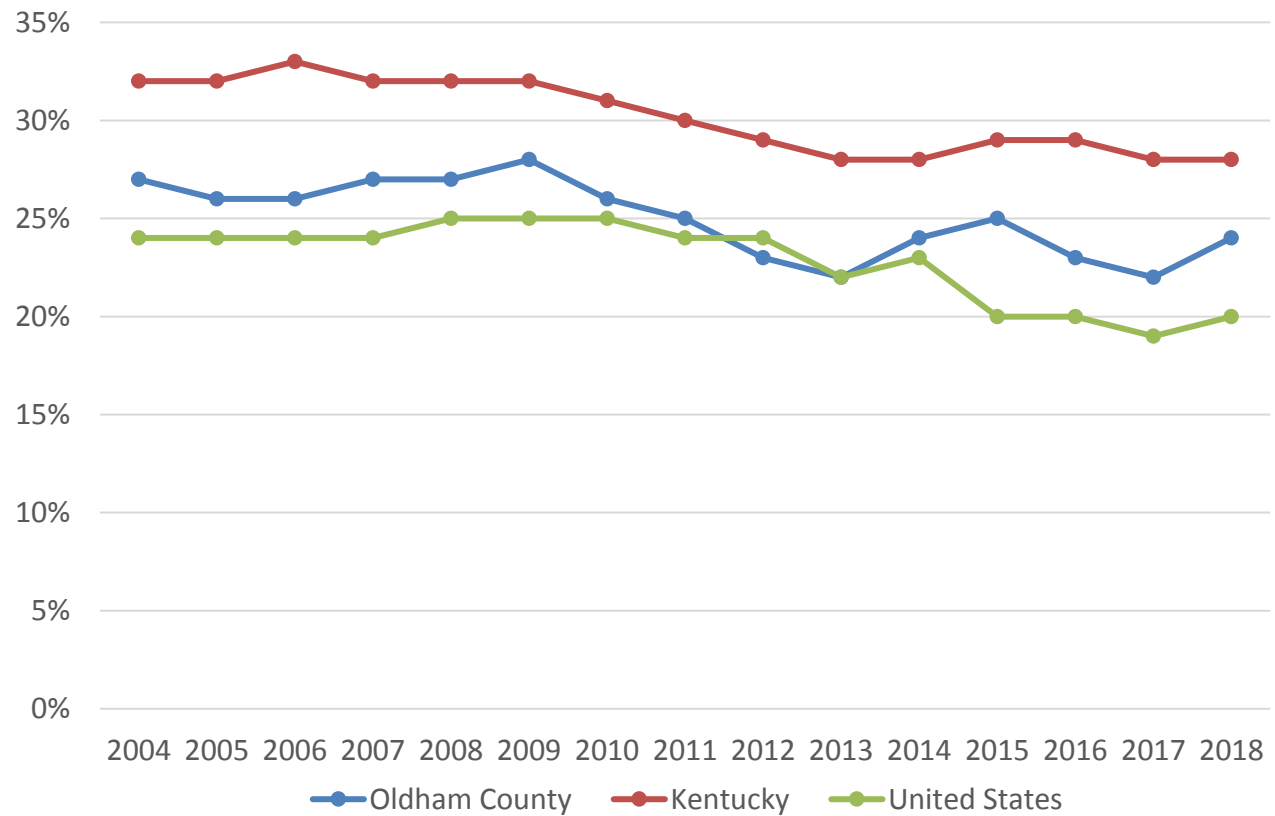


Figure 3. Self-reported excessive drinking among Oldham County residents compared to Kentucky and United States top performers, 2011-2015.

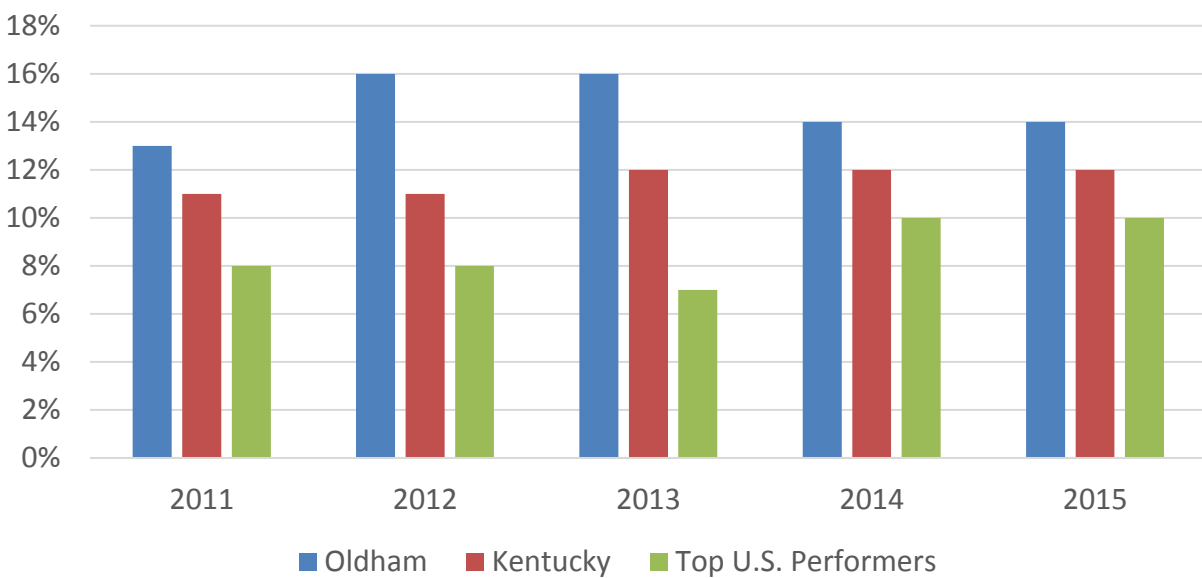


Figure 4. Self-reported excessive drinking among Oldham County residents compared to Kentucky and United States top performers

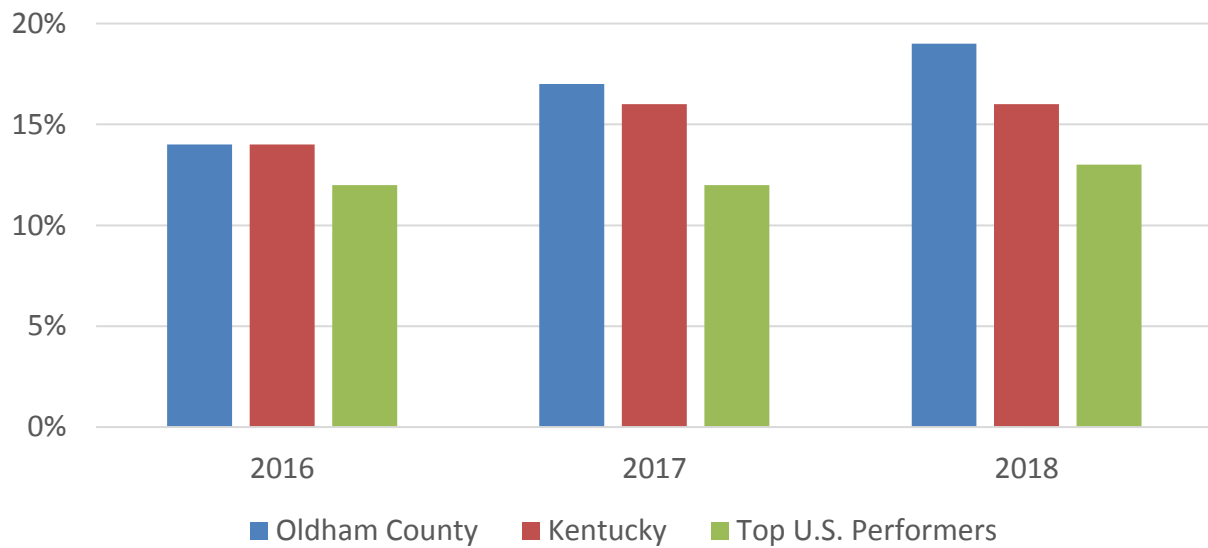


Figure 5. Acute drug poisoning including overdose denoted within in-patient hospitalizations and emergency department visits from 2013-2017 in Oldham County, Kentucky.

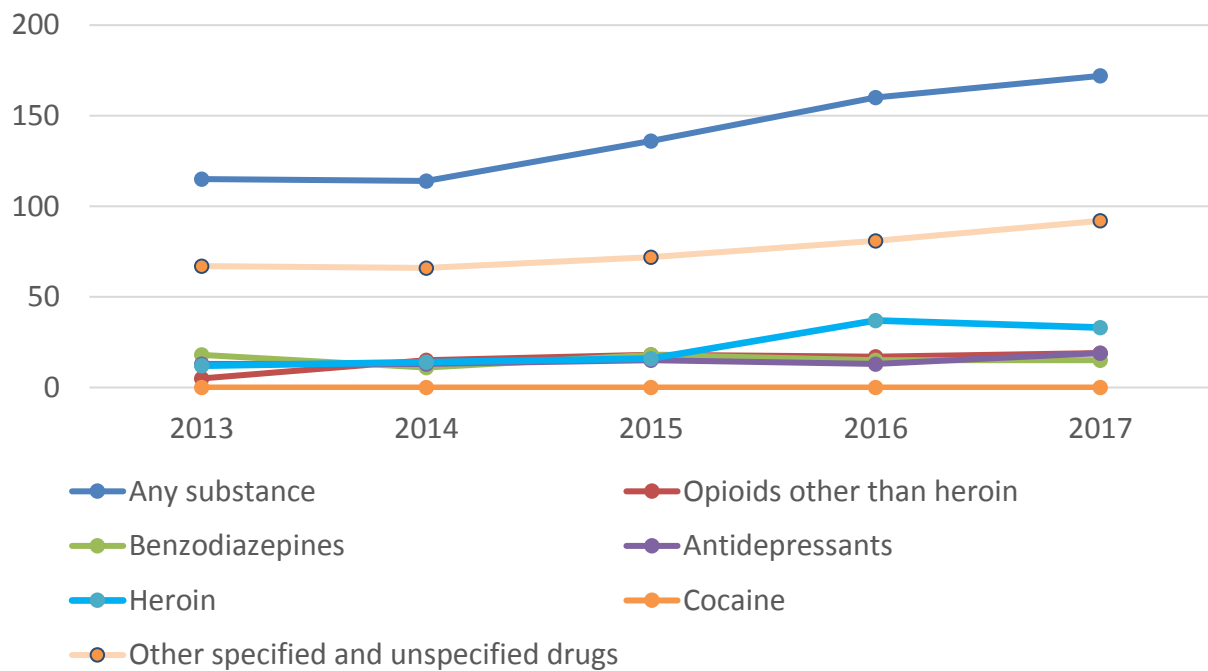
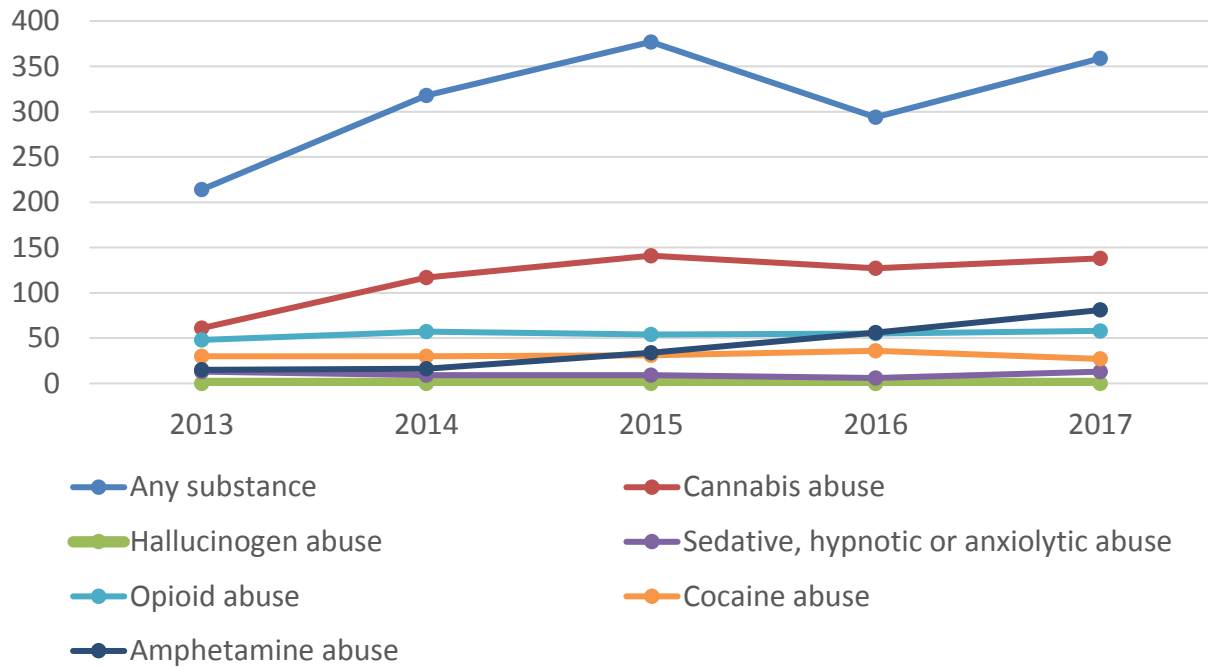


Figure 6. Acute drug poisoning including overdose denoted within in-patient hospitalizations and emergency department visits from 2013-2017 in Oldham County, Kentucky.



Appendix 2: Community Survey Tool



Oldham County Community Health Survey

Your opinion is important! If you are a resident of Oldham County and at least 18 years old, please take a few short minutes to complete this 22 question survey. Enter your phone number at the end of the survey for a chance to win one of many \$50 gift certificates.

The purpose of this survey is to get your opinions about community health issues in Oldham County. The Coalition for a Healthy Oldham County will use the results of this survey and other information to identify the most pressing problems which can be addressed through community action. Remember... your opinion is important! Thank you and if you have any questions, please contact us (see contact information on back).

1. In the following list, what do you think are **the top three factors** that most improve the quality of life in Oldham County?

Please check the top three:

<input type="checkbox"/> Access to health care (e.g., family doctor)	<input type="checkbox"/> Healthy behaviors and lifestyles
<input type="checkbox"/> Affordable housing	<input type="checkbox"/> Low adult death and disease rates
<input type="checkbox"/> Arts and cultural events	<input type="checkbox"/> Low crime / safe neighborhoods
<input type="checkbox"/> Clean environment	<input type="checkbox"/> Low infant deaths
<input type="checkbox"/> Emergency preparedness	<input type="checkbox"/> Low level of child abuse
<input type="checkbox"/> Excellent race/ethnic relations	<input type="checkbox"/> Parks and recreation
<input type="checkbox"/> Good jobs and healthy economy	<input type="checkbox"/> Religious or spiritual values
<input type="checkbox"/> Good place to raise children	<input type="checkbox"/> Strong family life
<input type="checkbox"/> Good schools	<input type="checkbox"/> Other _____

2. In the following list, what do you think are **the top three problems** that have the greatest impact on overall community health in Oldham County?

Please check the top three:

<input type="checkbox"/> Aging problems (e.g., arthritis, hearing/vision loss, etc.)	<input type="checkbox"/> Firearm-related injuries	<input type="checkbox"/> Obesity
<input type="checkbox"/> Alcohol/Drugs	<input type="checkbox"/> HIV / AIDS	<input type="checkbox"/> Poor Diet
<input type="checkbox"/> Cancers	<input type="checkbox"/> Homicide	<input type="checkbox"/> Rape / sexual assault
<input type="checkbox"/> Child abuse / neglect	<input type="checkbox"/> Infant Death	<input type="checkbox"/> Sexually Transmitted Diseases (STDs)
<input type="checkbox"/> Chronic Diseases (e.g. diabetes, cardiopulmonary diseases, etc.)	<input type="checkbox"/> Infectious Diseases (e.g., hepatitis, TB, etc.)	<input type="checkbox"/> Suicide
<input type="checkbox"/> Dental problems	<input type="checkbox"/> Mental health problems (e.g. depression, anxiety, etc.)	<input type="checkbox"/> Teenage pregnancy
<input type="checkbox"/> Domestic Violence	<input type="checkbox"/> Motor vehicle crash injuries	<input type="checkbox"/> Terrorist activities
		<input type="checkbox"/> Other _____

3. In the following list, what do you think are **the top three behaviors** that have the greatest impact on overall community health in Oldham County?

Please check the top three:

<input type="checkbox"/> Alcohol abuse	<input type="checkbox"/> Not using seat belts / child safety seats
<input type="checkbox"/> Being overweight	<input type="checkbox"/> Poor eating habits
<input type="checkbox"/> Dropping out of school	<input type="checkbox"/> Racism
<input type="checkbox"/> Drug abuse	<input type="checkbox"/> Tobacco use
<input type="checkbox"/> Lack of exercise	<input type="checkbox"/> Unsafe sex

<input type="checkbox"/> Lack of maternity care	<input type="checkbox"/> Unsecured firearms
<input type="checkbox"/> Not getting “shots” to prevent disease	<input type="checkbox"/> Other _____
<input type="checkbox"/> Not using birth control	

4. In the following list, what do you think are **the top three “safety concerns”** in Oldham County?

Please check the top three:

<input type="checkbox"/> Access to firearms by children	<input type="checkbox"/> Potential legalization of marijuana
<input type="checkbox"/> Alcohol and Drug Use	<input type="checkbox"/> Racism and intolerance
<input type="checkbox"/> Child abuse and neglect	<input type="checkbox"/> School Violence (including bullying)
<input type="checkbox"/> Domestic violence	<input type="checkbox"/> Unsafe Driving
<input type="checkbox"/> Gang-related activity	<input type="checkbox"/> Unsafe roads/sidewalk conditions
<input type="checkbox"/> Manufacturing of methamphetamines	<input type="checkbox"/> Unsafe/unprotected sex
<input type="checkbox"/> Not using seat belts and safety seats, helmets	<input type="checkbox"/> Other _____

5. Where do you seek health care most often?

<input type="checkbox"/> Primary Care Provider	<input type="checkbox"/> Chiropractor
<input type="checkbox"/> Specialist	<input type="checkbox"/> Hope Health Clinic
<input type="checkbox"/> Urgent Care	<input type="checkbox"/> Oldham County Health Department
<input type="checkbox"/> Clinics located in Drug/Grocery Store	<input type="checkbox"/> Other _____
<input type="checkbox"/> Emergency Room	

6. If you seek health care **outside** of Oldham County, **circle one answer that best matches why:**

- My doctor of choice is in another city.
- No providers in Oldham County for services I need.
- My insurance only covers doctors in another area.
- No appropriate doctors accept Medicare/Medicaid.
- Convenience
- Other _____

7. How do you pay for your health care? (check all that apply)

- Self-pay (no insurance)
- Health insurance (e.g., private insurance, Humana, Anthem, Kynect, etc.)
- Medicaid (CareSource, CoventryCares, Passport, WellCare)
- Medicare or Medicare Advantage
- Veterans Administration
- Don't go to a Doctor because I can't pay
- Other _____

8. How much do you think **adults** risk harming themselves (physically or in other ways) if they vape/ use electronic cigarettes regularly?

- No risk
- Slight risk
- Moderate risk
- Great risk

9. How much do you think **adults** risk harming themselves (physically or in other ways) if they smoke marijuana once or twice a week?

- No risk
- Slight risk
- Moderate risk
- Great risk

10. How much do you think **young people** risk harming themselves (physically or in other ways) if they smoke marijuana once or twice a week?

- No risk
- Slight risk
- Moderate risk
- Great risk

11. How much do you think **young people** risk harming themselves (physically or in other ways) if they drink alcohol once or twice a week?

- No risk
- Slight risk
- Moderate risk
- Great risk

12. How concerned are you by underage drinking in Oldham County?

- Very concerned
- Somewhat concerned
- Not very concerned
- Not sure

13. Do you agree or disagree with the following statement: It is okay for youth under the age of 21 to drink if they are at a home and supervised by an adult.

- Agree
- Disagree

14. A 'social host' is anyone who knowingly hosts or allows underage drinking at parties on property that they own, lease or otherwise control. A Social Host Ordinance holds adults criminally responsible for any underage drinking occurring on their property. Are you aware that such an ordinance exists in Oldham County?

- Yes
- No

15. If the state votes to legalize marijuana either medically or recreationally, do you believe Oldham County should allow retail sales of marijuana within county lines?

- Yes
- No

16. Are safe walking paths important to you?

- Yes
- No

17. The Greenways Project is a recreational trail that will connect LaGrange to Pewee Valley. Do you think completion of the Greenways Project should be a community priority?

- Yes
- No

Please answer questions #16-20 so we can see how different types of people feel about local health issues.

18. Zip code where you live: _____

19. Age: 18 - 25
 26 - 39
 40 - 54
 55 - 64
 65 or over

20. Sex: Male Female

21. Education

- Less than high school
- High school diploma or GED
- College degree or higher
- Other _____

22. Household income

- Less than \$20,000
- \$20,000 to \$39,999
- \$40,000 to \$59,999
- \$60,000 to \$79,999
- \$80,000 to \$99,999
- Over \$100,000

Please write your phone number here for a chance to win one of many \$50 gift certificates. ***Your phone number will not be linked to your responses or used for any further communication:***

Please return completed surveys by May 11, 2018 to the address below or go online to complete at:

<http://bit.ly/OChealth>

If you would like more information about this community project, please contact us at the number below:

Anna Hobbs
Coalition for a Healthy Oldham County
Oldham County Health Department
1786 Commerce Parkway
LaGrange, KY 40031
502-222-3516 x 140

Thank you very much for your response!

Appendix 3: Local Public Health System Assessment

Asset Mapping Exercise: October 10, 2018

Substance Use

- Drug Count
- Tri County CCA resource identification
- Physical Health
 - Work with county parks department
- Drug Court – Project Parent
- Health Department
- Churches
- DFC Grant
- Oldham County Police
- CPS
- Probation and Parole
- Schools
- County Treatment
- TCCAA
- CHOC
- Hope Collaborative Mentor
- KIPRC
- “Parent of An Addict”
- Planning and Zoning
- Findhelpnowky.org
- Sources of Strength
- 21st Century Prevention

Physical Activity and Nutrition

- Health Ministries
- Stop smoking classes
- WIC
- Extension Office
- Southeast Christian CW
- Body by the Book Group
- YMCA
- OC Parks and Rec
- Tri County CAA
- Green Ways
- Framer’s Market
- Hospital
- Health Department

School Readiness Connections – Community and School

- School Readiness
 - Literacy Live (OC School)
 - Summer Learning Program (OC School)
 - Ages and Stages Questionnaire (OC Health Department)
 - Summer Learning for Prevention (YMCA)
- School
 - Metro United Way
 - Speedy Programs
 - Hosting Community Conversations
- Ballardsville Baptist Church
 - Volunteer involvement at Locust Grove Elementary
- Connections – Community and the schools
- Hope Collaborative
 - Provides mentors in 9 of the OC public schools, working with students who are at risk (preschool through high school age)
- Northeast Christian Church
 - Supports OC Preschool and La Grange Elementary
- Phos Church
 - Adopts a teacher at Centerfield and provides support throughout the year
- Limited services and programs from infants to 3 years
- School Readiness
 - Ages and Stages
 - HANDS
 - Head Start
 - Early Head Start
- Pockets of Poverty
 - Head Start
 - Grace and Glory Food Bank
 - Good News Homes
 - Hope Clinic

Poverty/Housing Transportation

- Temporary Housing
 - Good News Housing
- Basic Housing
 - Metro United Way
- Poverty/Housing/Transport
 - Oldham Bus (Public Transport)
 - Churches
 - TARC
 - Planning and Zoning
 - Approve affordable housing options
- Housing
 - Good News Housing
 - Red Cross – Emergency only
 - OC Ministerial Association

Mental Health

- Coping
- Obesity
- Connectivity
- Physical Activity
- Child Fatality Review Team
- DFC Grant
- OCHD
- Private Counseling
- Art Therapy

Access to Care

- Dental
- Vision
- Health
- Mental Health
- Hope Health Clinic (Baptist)
- Tri-County Community Action
- Norton Immediate Care Center
- Norton Community Medical Associates Crestwood
- Norton Brownsboro Hospital
- Norton Faith and Health Ministries Outreach Services

Appendix 4: Community Health Status Assessment- Additional Charts and Figures

Appendix 1

Oldham County Public School Data:

KPREP Testing and Safety Incident Reports

Figure I. K-PREP Mathematics scores for elementary and middle school students comparing Oldham County to the Kentucky scores.

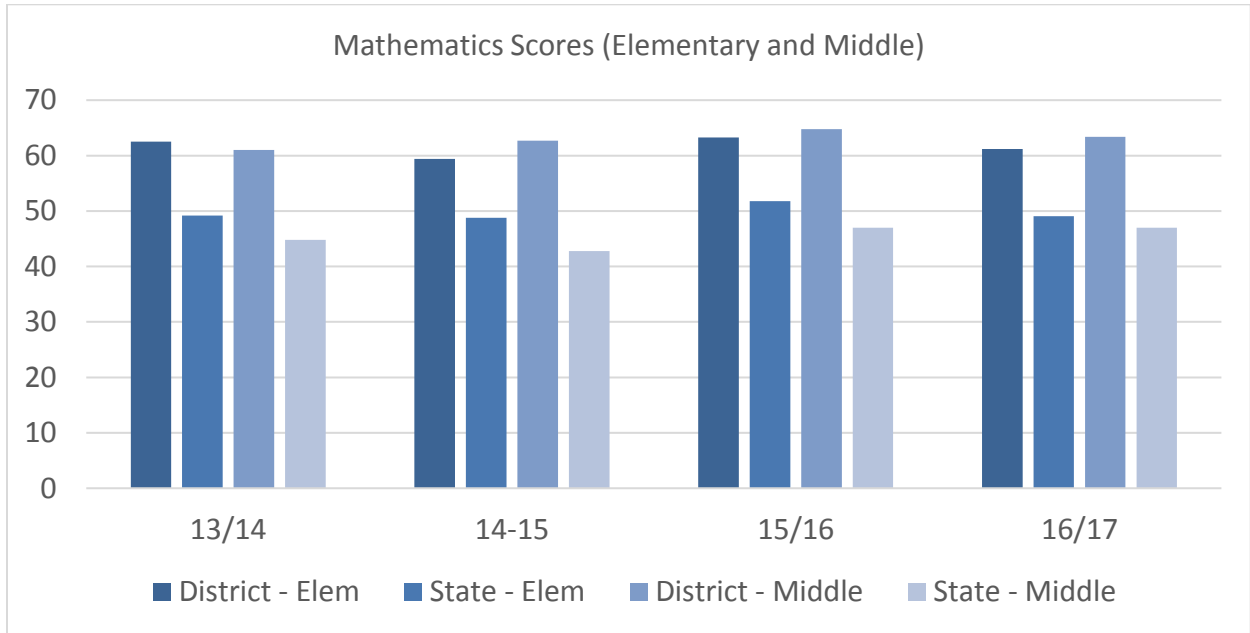


Figure II. K-PREP Social Studies scores for elementary and middle school students comparing Oldham County to the Kentucky scores.

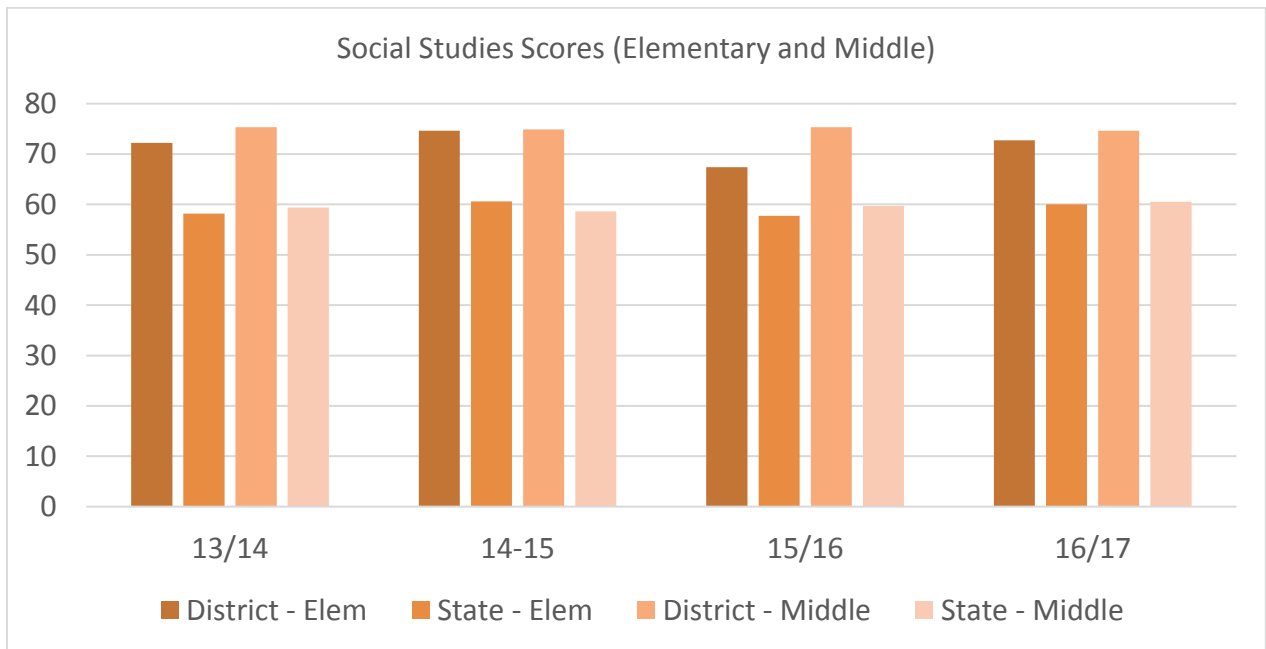


Figure III. K-PREP Writing scores for elementary, middle and high school students comparing Oldham County to the Kentucky scores.

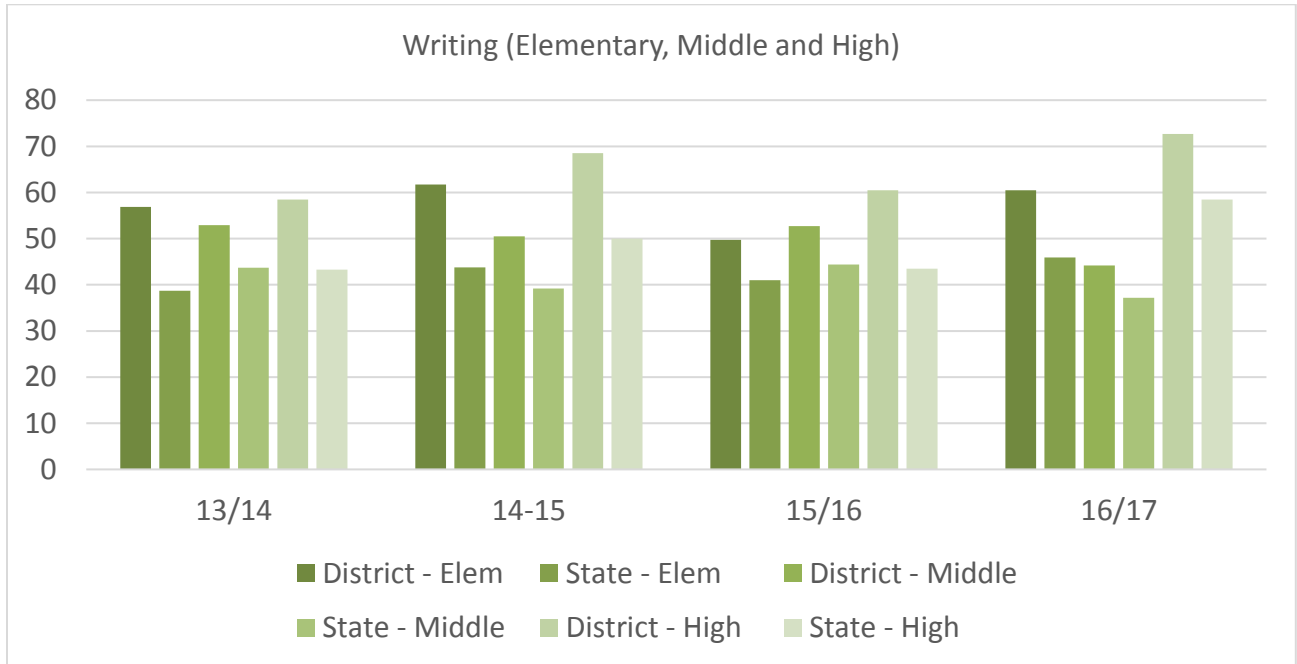


Figure IV. K-PREP Language Mechanics scores for elementary, middle and high school students comparing Oldham County to the Kentucky scores.

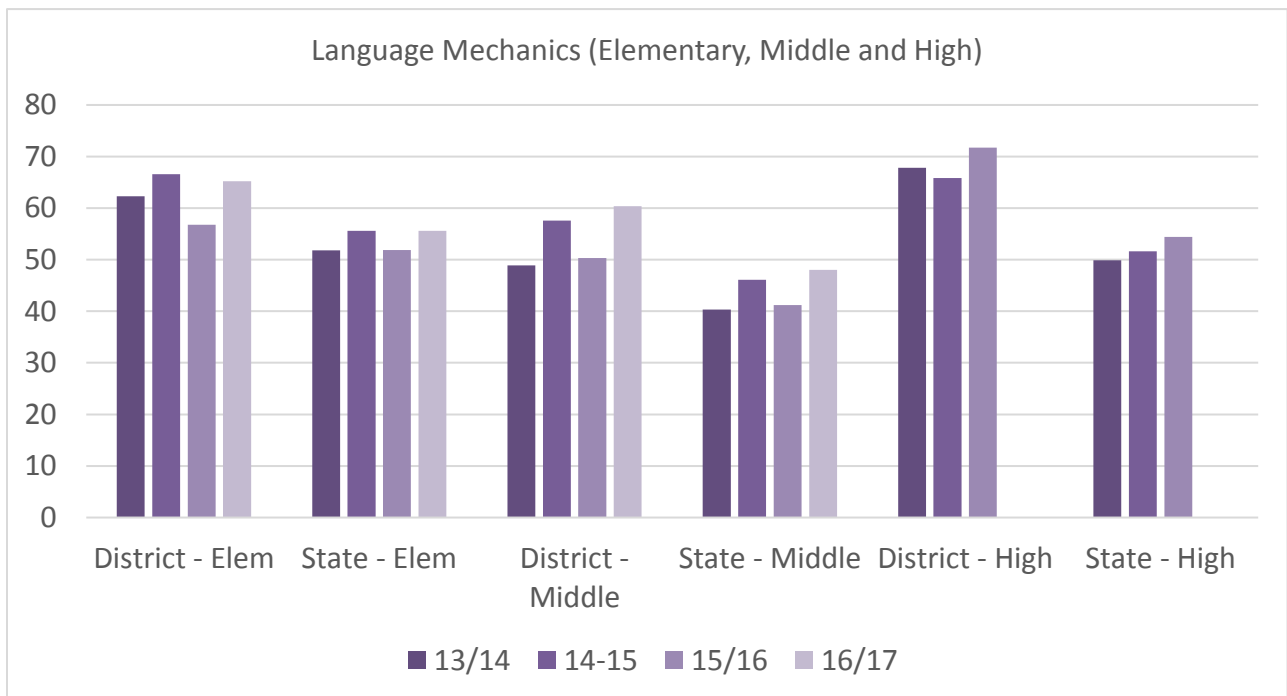


Figure V. K-PREP English scores for elementary and middle school students comparing Oldham County to the Kentucky scores.

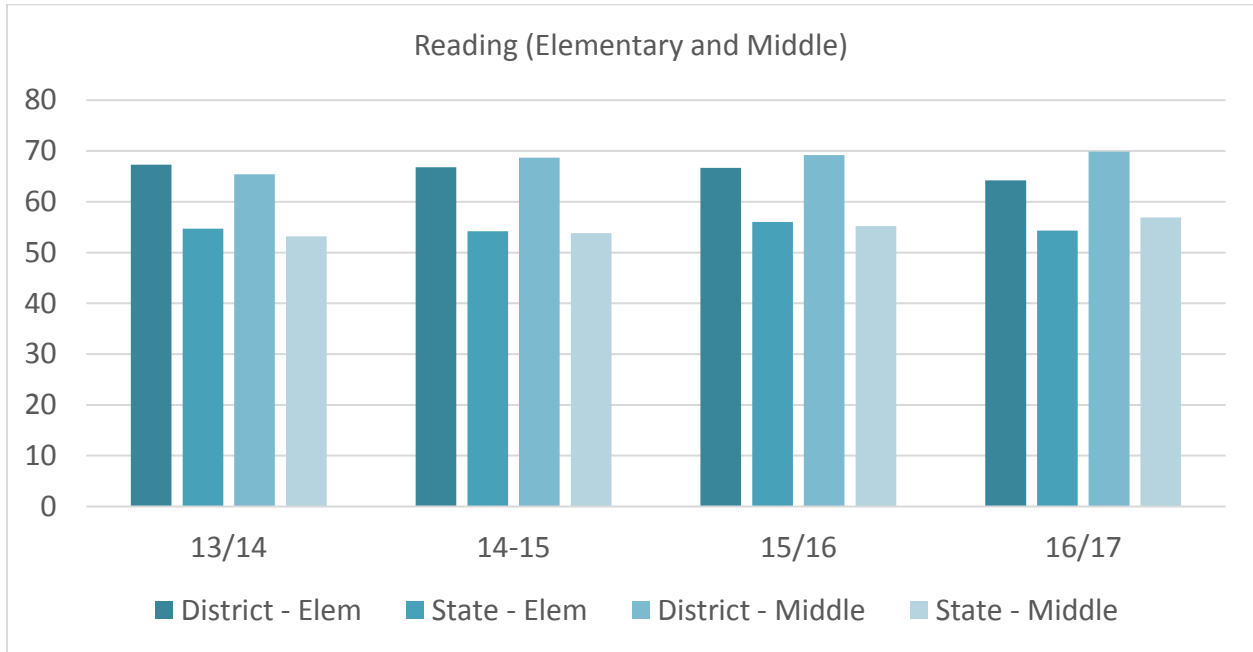


Figure VI. Free and reduced lunch status among Oldham County students.

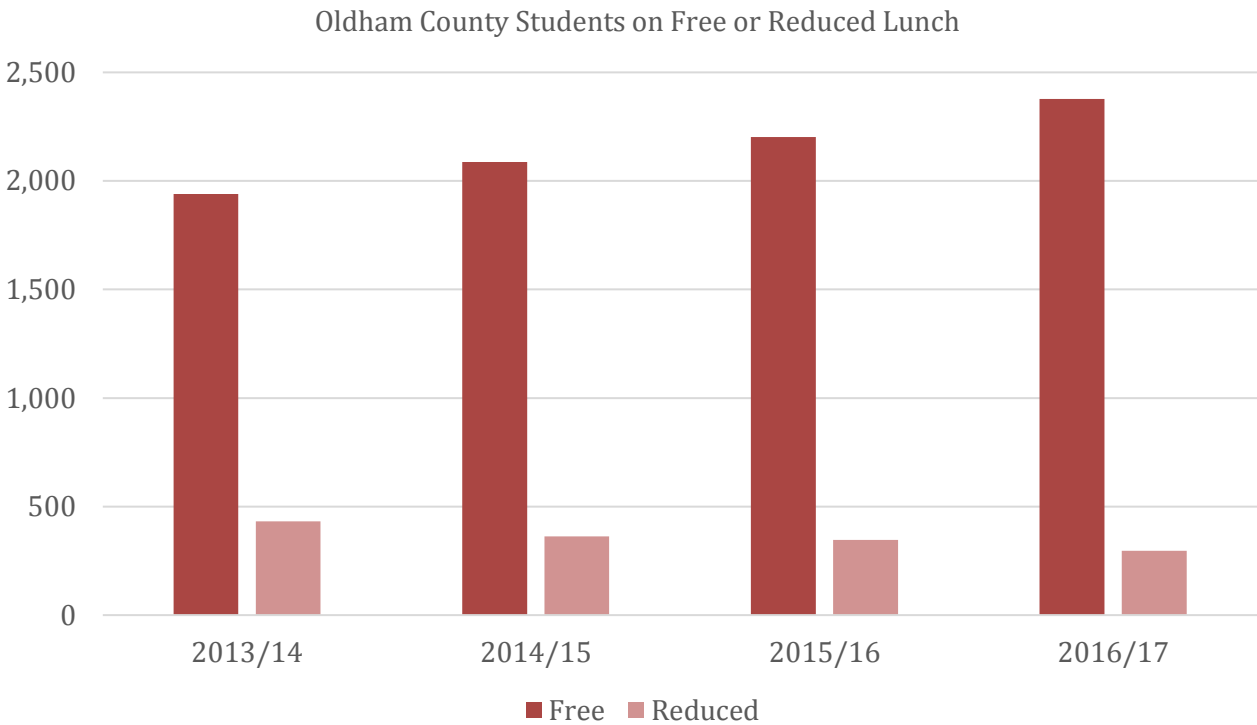


Figure VII. Total reported behavioral events among Oldham County Public Schools, 2013-2017.

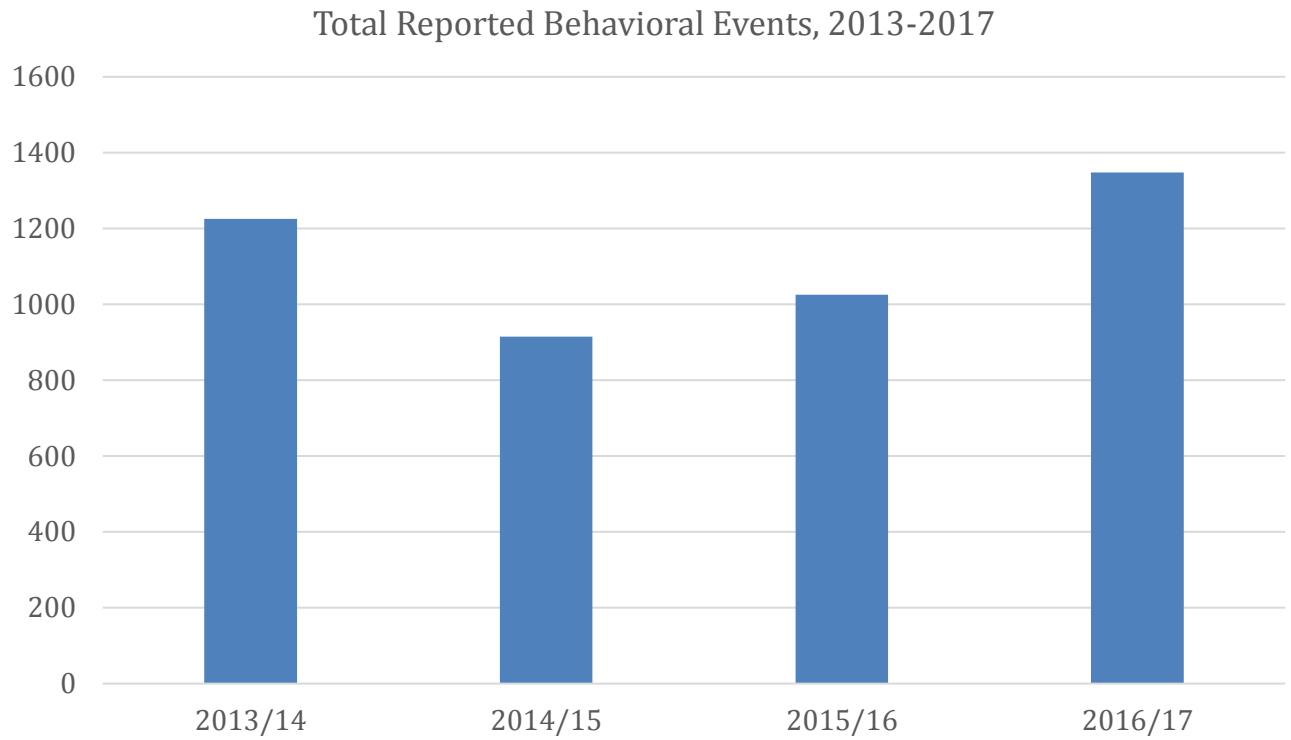
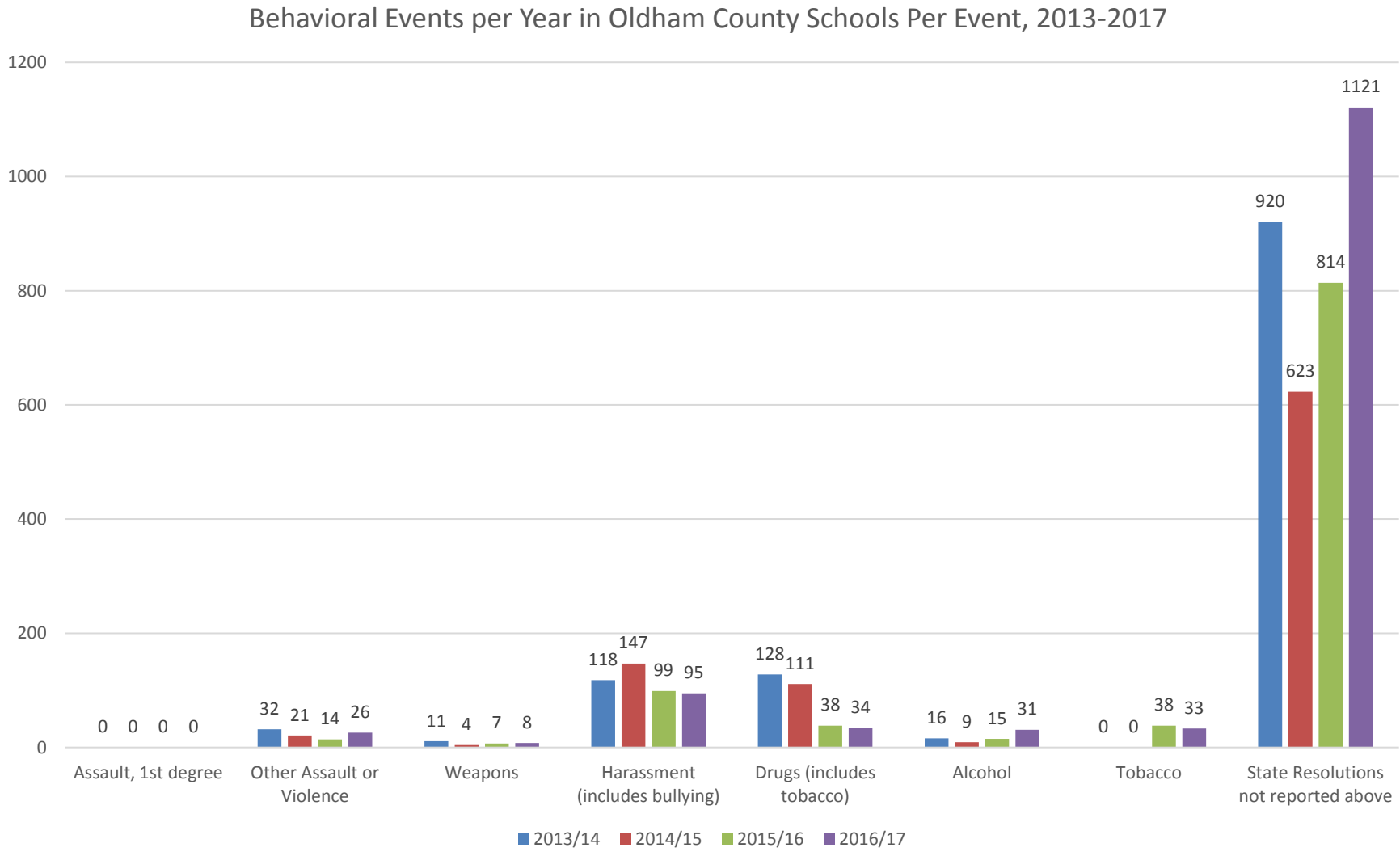


Figure VIII. Behavioral events reported per year in Oldham County Public Schools per category, 2013-2017.



Appendix 2. Community Safety Data

Chart I. Oldham County police department most common calls for service, 2017.

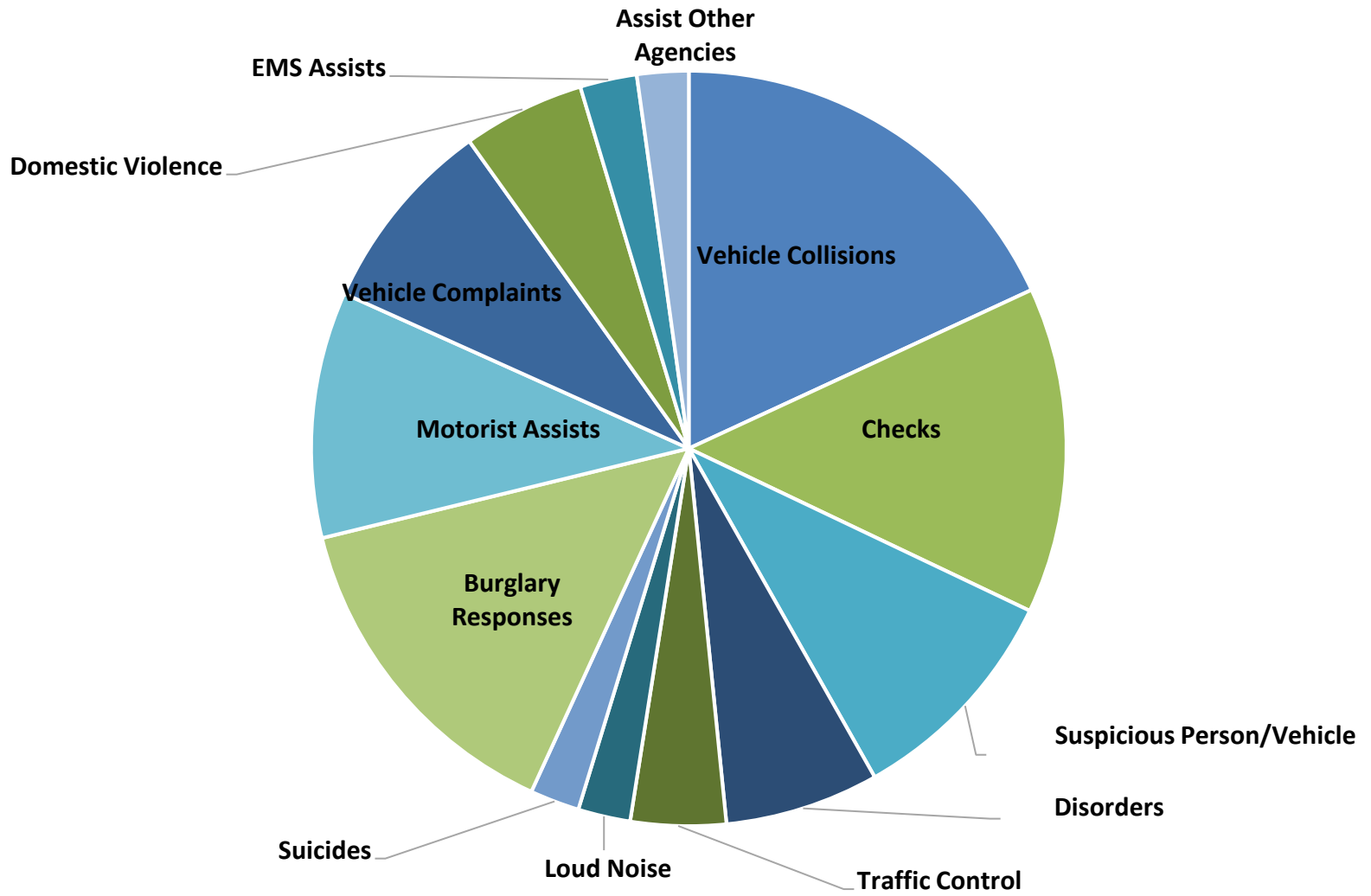


Chart II. Annual Activity Report, LaGrange Police Department, 2015.

LaGrange Police Department Annual Activity Report, 2015

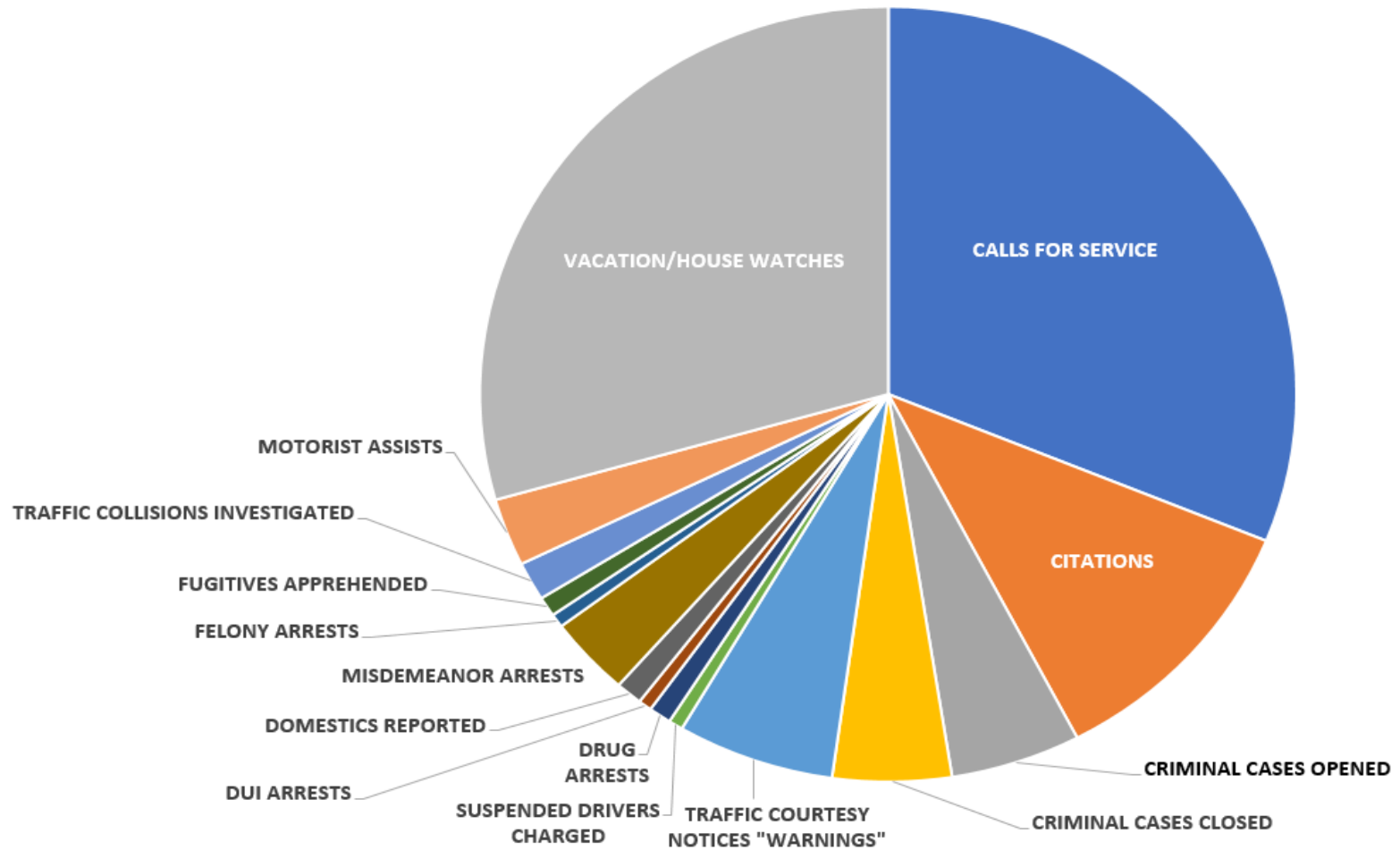


Chart III. Annual Activity Report, LaGrange Police Department, 2016.

LaGrange Police Department Annual Activity Report, 2016

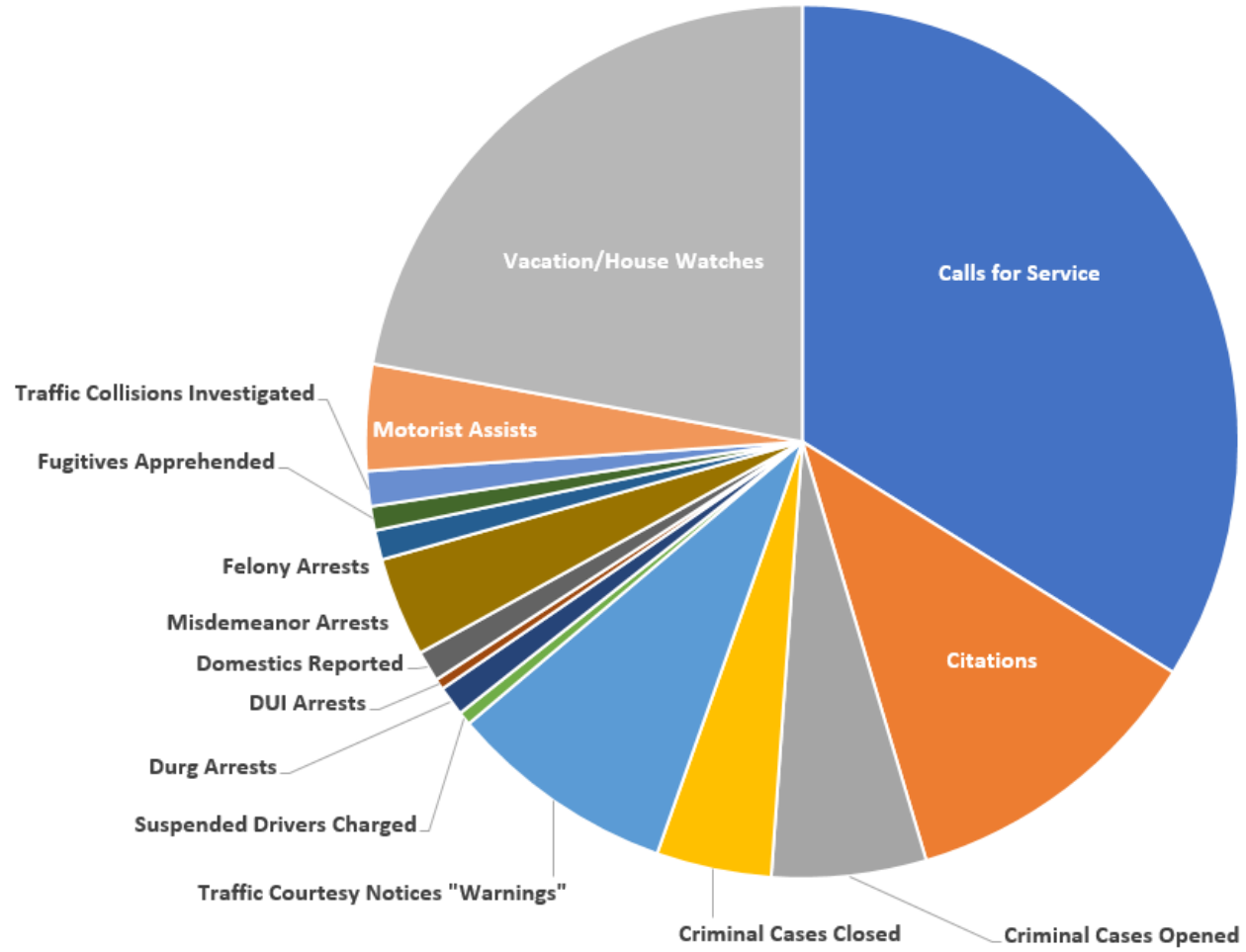


Table I. Top ten dispatched calls for LaGrange Police Department, 2015 and 2016.

Dispatched Calls, LaGrange Police Department		
Dispatch Code	2015	2016
Alarm	278	240
Auto Crash	367	331
Case Follow-up	*	196
Check, Situation	346	356
Check, Welfare	176	*
Disorder	294	229
Domestic	192	243
Meet the Subject	242	368
Suspicious Vehicle	197	190
Traffic Stop	1,768	2,239
Vehicle Complaint	176	195

Figure XI. Alcohol Beverage Control (ABC) reports involving alcohol, 2015.

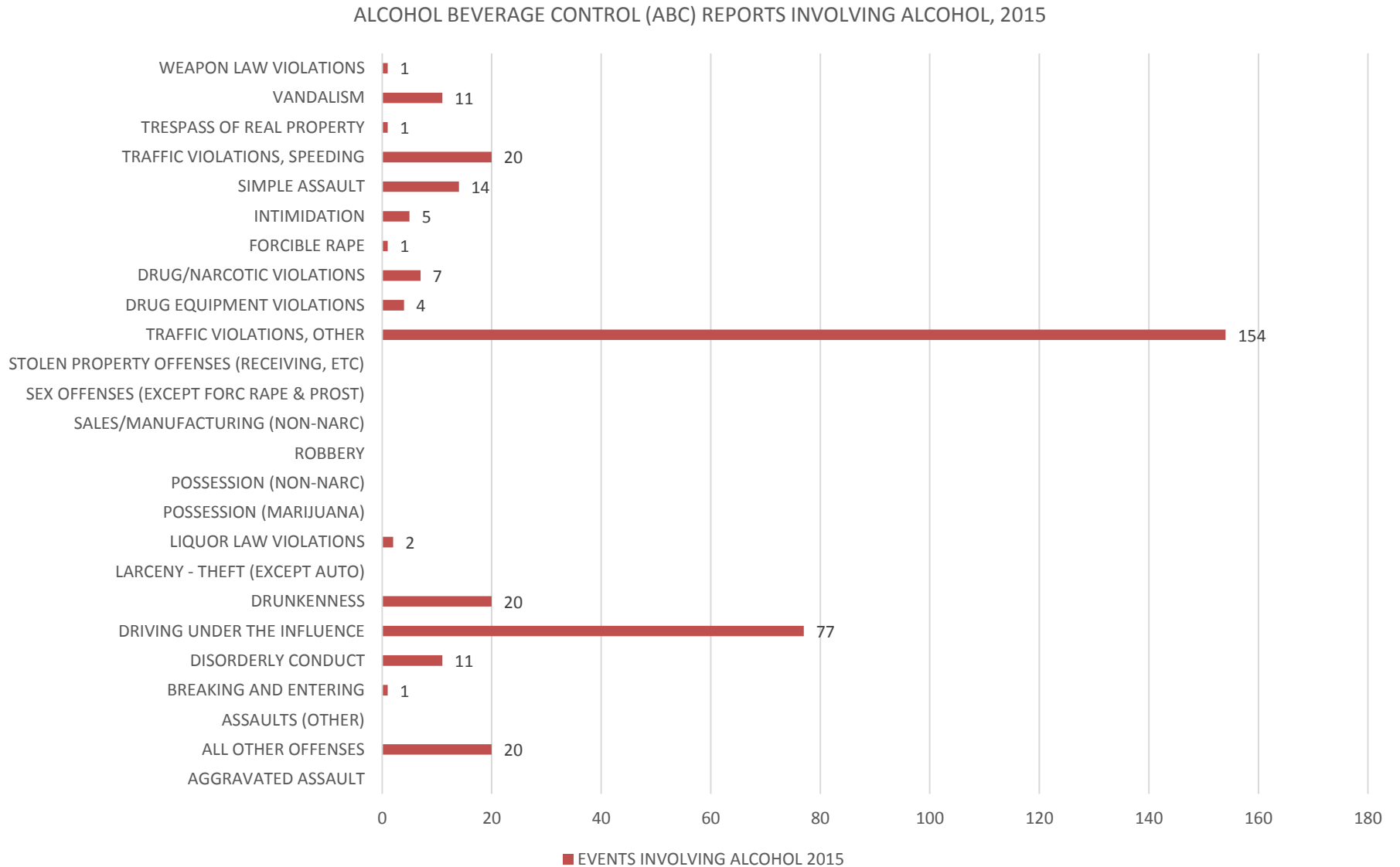


Figure X. Alcohol Beverage Control (ABC) reports involving alcohol, 2016.

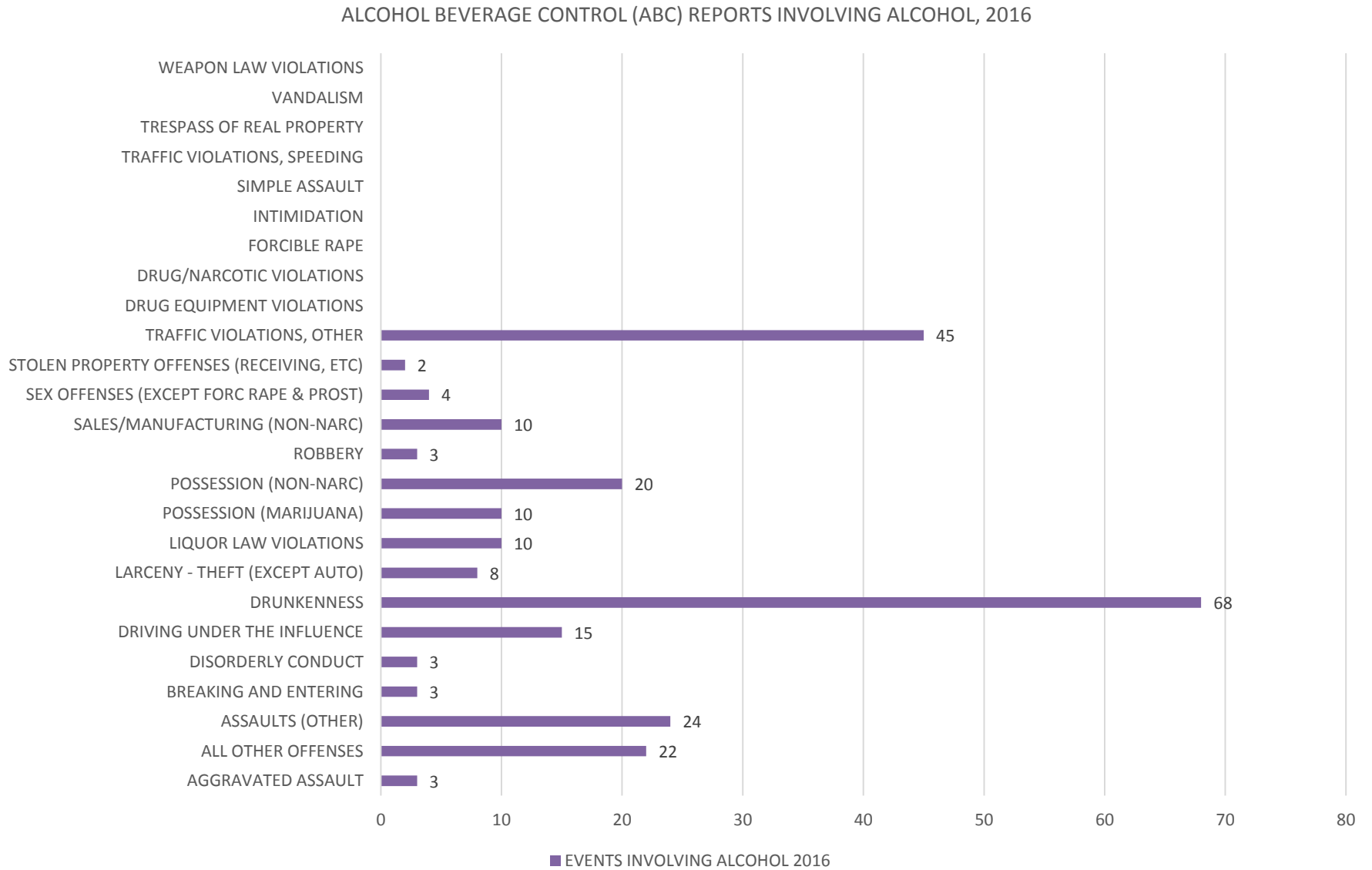
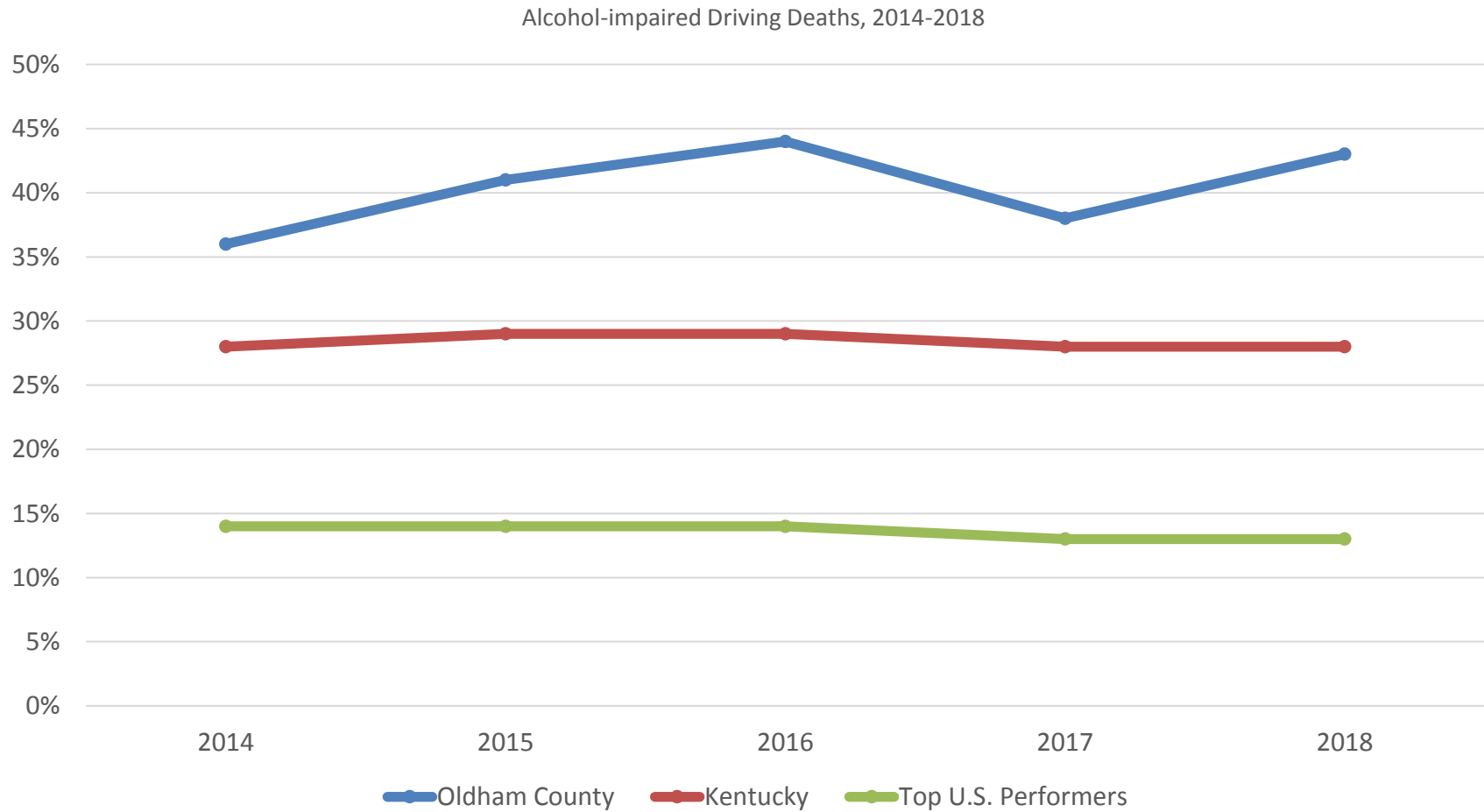


Figure XI. Reported alcohol-impaired driving deaths in Oldham County compared to Kentucky and top U.S. performers, 2014-2018.



Appendix 3. Drug Usage Data

Figure XII. Acute drug poisoning (overdose) combinations among Oldham County residents, 2013-2017.

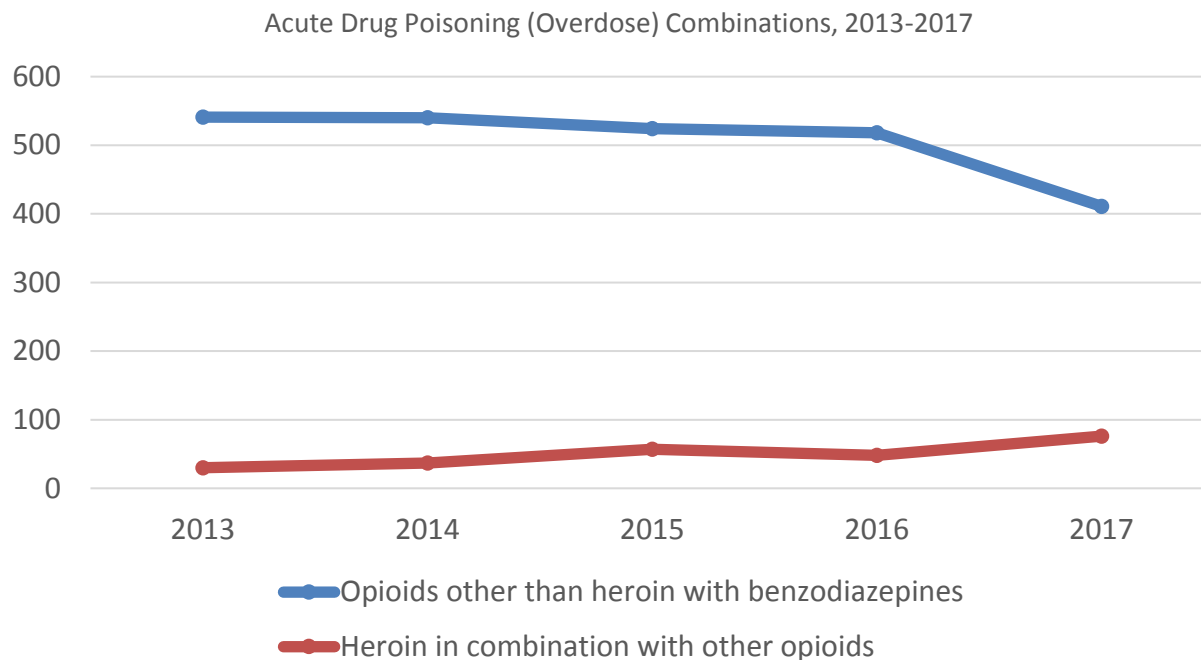


Figure XIII. Drug dependence (excluding overdoses) among Oldham County residents, 2013-2017.

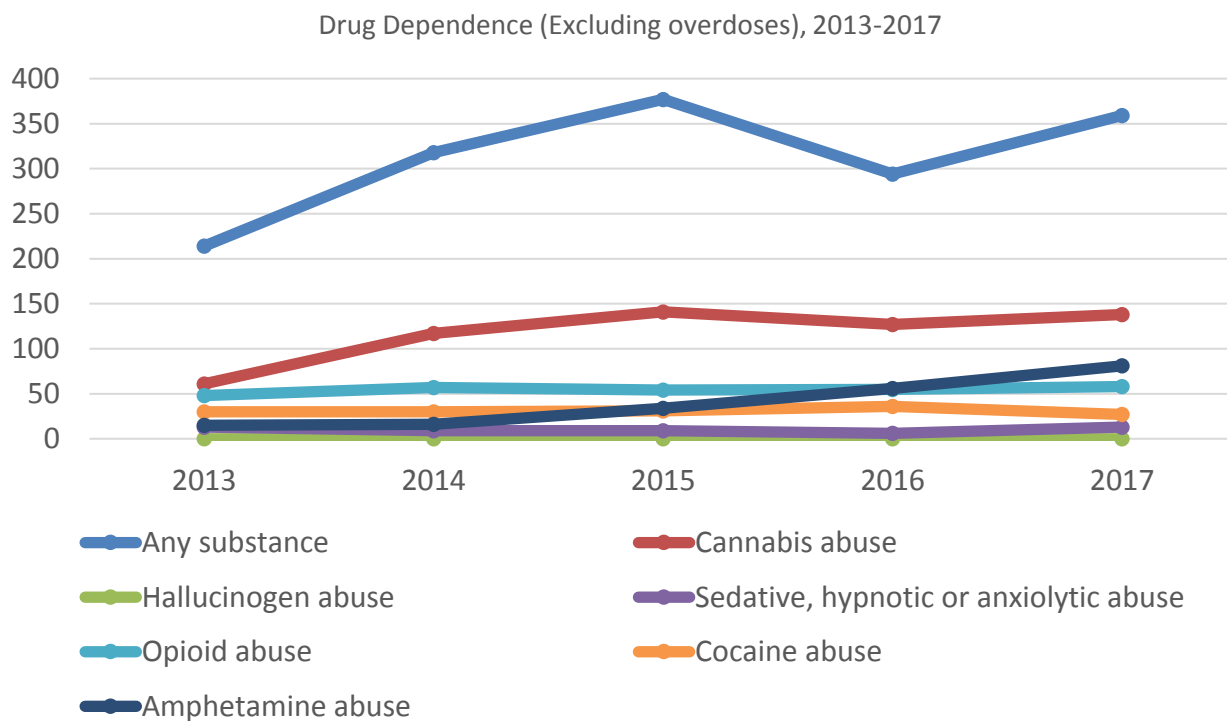


Figure XIV. Comorbid infectious disease and drug overdose, abuse or dependence among Oldham County residents, 2013-2017.

Comorbid Infectious Disease and Drug Overdose, Abuse or Dependence, 2013-2017

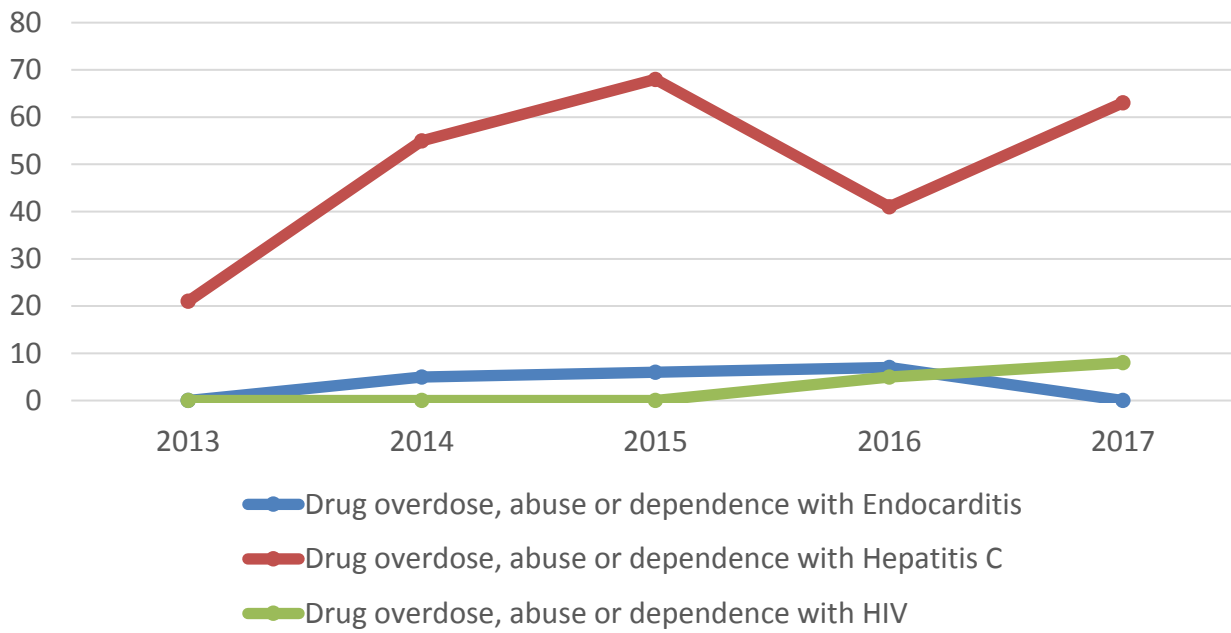


Figure XV. Infectious disease (with or without comorbid drug overdose, abuse or dependence) among Oldham County residents, 2013-2017.

Infectious Disease (With or Without Comorbid Drug Overdose, Abuse or Dependence), 2013-2017

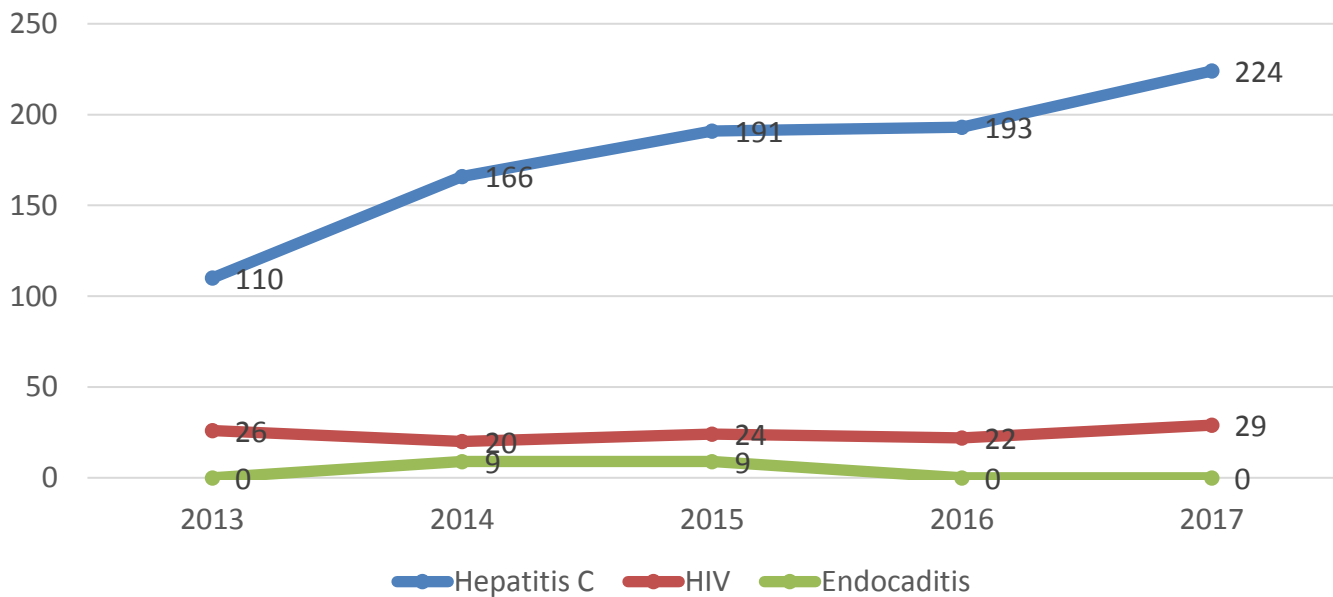
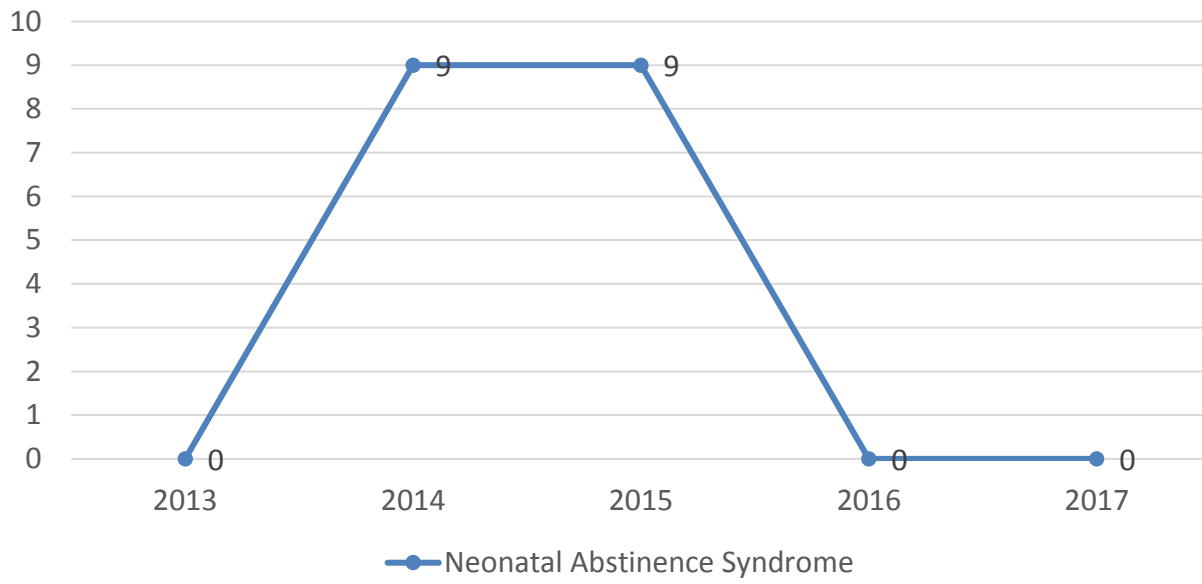


Figure XVI. Neonatal abstinence syndrome diagnoses among Oldham County infants, 2013-2017.

Neonatal Abstinence Syndrome, 2013-2017



Appendix 4. Additional Health Outcomes

Figure XVII. Self-reported poor mental health days among Oldham County residents, 2011-2015.

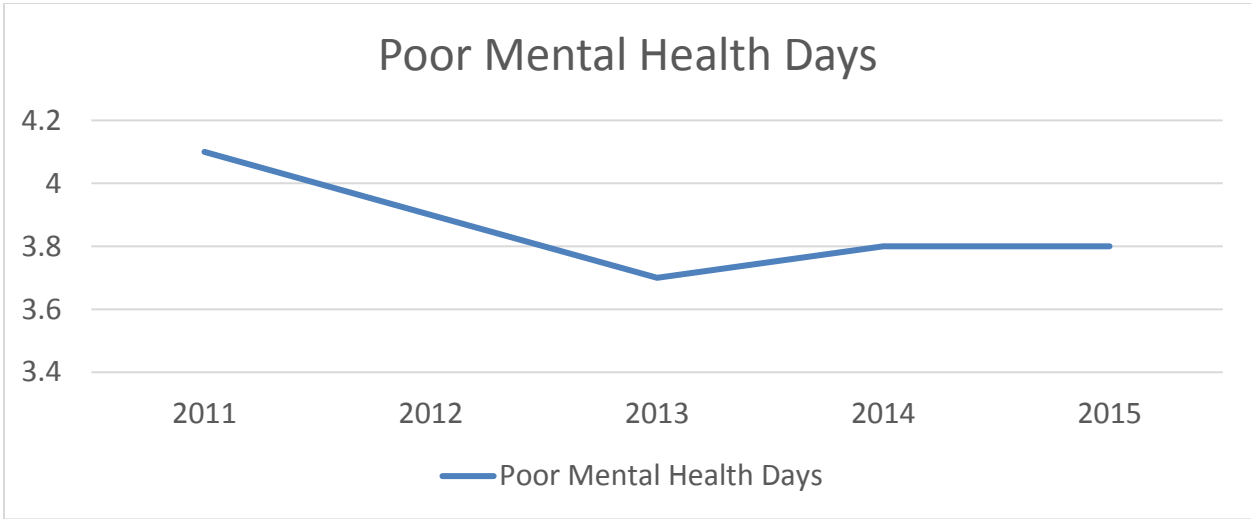


Figure XVIII. Self-reported poor mental health days among Oldham County residents, 2016-2018.

