



Craig A. STANFIELD
 REAL ESTATE BROKER
 AUCTIONEER

KAA
 KENTUCKY AUCTIONEERS ASSOCIATION

(606) 798-2009
 (606) 301-3350



Be sure to check out my website:
www.stanfieldproperty.com

2 LAKES **NEWLY SURVEYED!!!** **2 HOMES**
BEAUTIFUL KENTUCKY COUNTRY!



**UNIQUE ONE OF A KIND PROPERTY,
 LARGE ACREAGE TWO LAKES!!!**



**475 ACRES, 2 LAKES, 2 HOMES
 WOODLANDS AND PASTURE!
 Call Craig Today! 606-301-3350!**

LEWIS CO.
**475 ACRES W/
 PRIVATE LAKE,
 PONDS, HOME, PASTURE &
 WOODS, GREAT WILDLIFE
 HABITAT AND WHITETAIL
 DEER HUNTING!**

This tract of BEAUTIFUL KENTUCKY COUNTRY has a tremendous amount of potential and appeal! Lake is LARGE, 35' deep, spring fed. Main home is like new; second home is a doublewide. Acreage includes pasture and woods (excellent wildlife habitat, offering the very best deer and wild turkey hunting!), with rock formations, small cave, Indian burial mounds, and more! Additional improvements include barn, shop w/ shed, and ponds! PRICED \$2,500,000!

*Main home 4 bdrm/2 bath lakeview!
 Second home 3 bdrm./2 bath!*



Craig A. STANFIELD
 REAL ESTATE BROKER
 AUCTIONEER

KENTUCKY AUCTIONEERS ASSOCIATION
KAA
 ASSOCIATION

(606) 798-2009
 (606) 301-3350



Be sure to check out my website:
www.stanfieldproperty.com

TOLLESBORO LOTS FOR SALE
NEW LISTINGS!



Cooper Dr. - .621 acres, barn, water, sewage, gas available, (think Barndominium!), priced JUST \$25,000!

Tollesboro - .411 acre lot, fronts on wet-weather branch, water, sewage available Just \$15,000!

Tollesboro - .694 acres, fronts on wet-weather branch, water, sewage available, Just \$15,000!

Tollesboro KY 57 - .902 acres, entrances on KY 57, water, gas, sewage available, Just \$15,000!



FLEMING CO. 97 ACRES +/- CATTLE FARM WITH 3 HOMES

Gently rolling pasture acreage fenced with good (mostly new) boundary and cross fencing with several water troughs (served by public water), pond and wet-weather creek, some woods (not as much as show in aerial due to recent clearing), improved with two 3 bedroom/2 bath homes (each provided with CH/CA), and a third home (this home will require remodeling and renovation) that offers 2 bdrms and 1 bath (as well as a large unfinished open two story addition that could provide for additional living quarters; this home has a newly installed septic system and a camper hookup has been installed adjacent thereto). There are some woods that offer great hunting (several impressive bucks caught on recent game camera photos), public water and electricity, road frontage, and priced to sell \$795,000!!!

Craig A. STANFIELD
REAL ESTATE BROKER
AUCTIONEER
Tel: (606) 798-2009
Fax: (606) 301-3350
www.stanfieldrealestate.com



Craig A. STANFIELD
REAL ESTATE BROKER
AUCTIONEER



Member Kentucky Auctioneers Assn. 2003 KY State Champion Bid-Caller.



(606) 798-2009
(606) 301-3350



FOR SALE
(606) 301-3350



412 ANDREW MASON ROAD, TOLLESBORO/VANCEBURG - 3 BDRM, 1 BATH ONE STORY FRAME HOME, CH/CA, ATTACHED TWO CAR GARAGE, SITUATED ON .558 ACRE LOT, PRICED TO SELL \$110,000!

NEW LISTING!!/SALE PENDING!!!



Aerial Photograph
NEW LISTING!
FLEMING CO. 10 ACRES
Mt. Tabor Rd., mix of woods & pasture, excellent homesite, water and electric available, **PRICED TO SELL \$77,500!!!**

TOLLESBORO 137 EAST EVANS ROAD - 1.95 ACRES WITH HOME, BARN



A MUST SEE PROPERTY WITH A LOT TO OFFER!
PRICE REDUCED! NOW \$260,000!



5 Bdrm., 1 Bath, One and One-Half Story Frame Home Over Basement! Home offers a remodeled kitchen, refinished hardwood floors (living room and 3 bdrms), offers 3 bdrms on the main level with two upper level bdrms, living room with hardwood floors and fireplace, steel roof, double-pane windows, CH/CA, a full basement (drive-in garage plus storage areas), situated on 1.953 acres with a barn with attached shed and a fenced-in pasture area (great for a horse or cow/calf, 4-H/FFA project), conveniently located just off KY 57 approximately 1 mile south of the AA Hwy and 1 1/2 miles south of the intersection of KY 57 and KY 10, served with water, electric and sewage, and **PRICE REDUCED!!! NOW JUST \$260,000!!!**



Craig A. STANFIELD
REAL ESTATE BROKER
AUCTIONEER

KAA
 KENTUCKY AUCTIONEERS ASSOCIATION

(606) 798-2009
(606) 301-3350



Be sure to check out my website:
www.stanfieldproperty.com



CLOSE-UP AA HWY ENTRANCE



FRONTAGE ON STONELICK ROAD

MASON CO. 6.646 AC.
fronting on the AA HWY and Stonelick Road.
PROPERTY HAS ACCESS IN PLACE ON "AA HWY!"
PROPERTY HAS IN EXCESS OF 1,000 LINEAR FEET OF FRONTAGE ON BOTH THE "AA HWY" (KY 9) AND STONELICK ROAD (KY 1448). WATER AND ELECTRIC AVAILABLE.
ZONED A-2 AGRICULTURAL PRICED AT JUST
\$160,000



TOLLESBORO 13.17 ACRES w/ POND! Nice tract of Kentucky Country on blacktop county road (Ribolt-Epworth Rd.), public water & electric, good homesite stocked pond \$99,900!
C3220



TOLLESBORO "AA HWY" 30.454 ACRES consisting of gently rolling to level cropland with a small barn, pasture acreages, and pond. Entrance on the "AA" HWY. Excellent potential for farm-use with commercial potential!
SOLD FOR \$11,000 PER ACRE!!!



MASON CO./ORANGEBURG
3 or 4 bdrm., 2 or 3 bath
1 1/2 st. frame home over bsmt. on 2.8+ acres with detached garage and shed. ALL FOR \$90,000!
Home needs finish (but a bunch of building materials are included with purchase). A LOT FOR THE MONEY. GOOD BONES, POTENTIAL, POTENTIAL, POTENTIAL!!!



LEWIS CO. 190 ELK LICK BRANCH - 3 bdrm., 2 bath doublewide situated on 1.03 acre lot, Lp gas heat (wall-mounted stove), concrete block foundation, detached garage, storage building ALL FOR JUST \$42,500! (Reduced from \$50,000!).



Building Lot - Utopia Estates
Lot 1, 1 acre,
\$14,100!

MAYSVILLE - LEXINGTON STREET (VISIBILITY FROM KY 11) AND LIMESTONE TERRACE - .45 ACRES with a POLE BARN VISIBLE FROM KY 11 (fronting on Lexington Street) and with a DOUBLEWIDE (Rough, but occupied and providing rental income), PRICED JUST \$35,000!!!

FOR SALE

Craig A. STANFIELD
REAL ESTATE BROKER
AUCTIONEER

Equal Housing Opportunity (606) 798-2009
(606) 301-3350

Be sure to check out my website:
www.stanfieldproperty.com

E-mail: info@stanfieldproperty.com

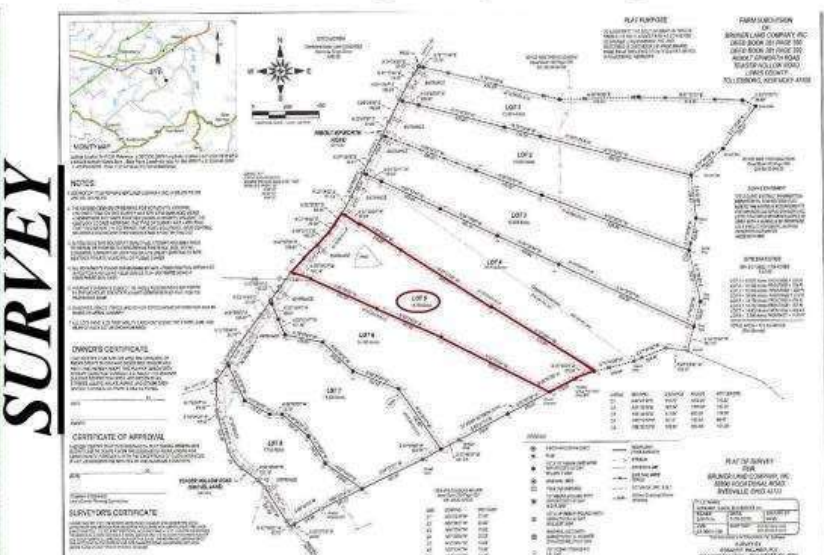
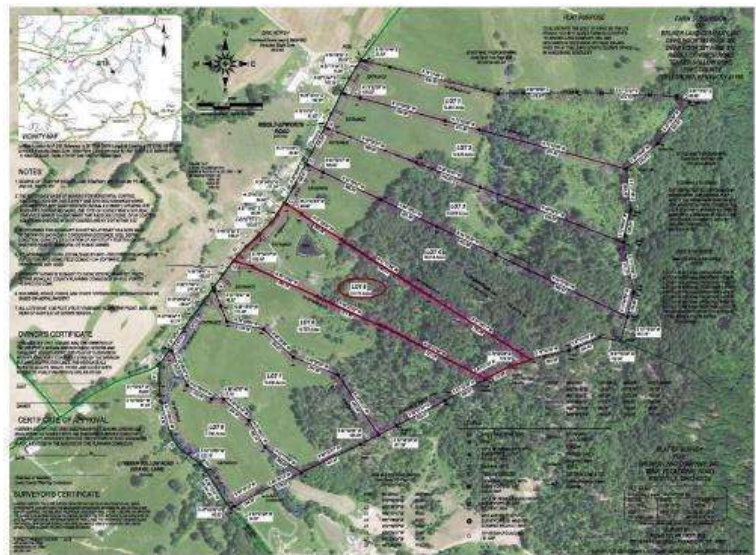
Craig A. STANFIELD
REAL ESTATE BROKER
AUCTIONEER

RECREATIONAL ACREAGE A SPECIALTY!

(606) 798-2009
(606) 301-3350



TOLLESBORO 13.27 ACRES WITH POND! - Beautiful tract of Kentucky country consisting of a mixture of pasture and woods with a nice stocked pond! Fronting on a blacktopped county road with public water and electricity and only a short drive from Tollesboro and the AA Hwy (KY 9), this property offers a nice homesite offering views of the surrounding countryside, offers fishing and hunting recreational uses, and has woods and pasture offering small agricultural and timber production purposes. **PRICED TO SELL JUST \$99,900**, this property offers a little bit of everything (homesite offering nice views, convenient/close to town and major roadway, with water and electric available; recreational uses - hunting, fishing, ATV riding; pasture - agricultural uses; woods - timber production)! It even has a place leveled off and graveled next to the pond to place a camper!!!



FOR SALE

S A L E

(606) 301-3350

EQUAL HOUSING OPPORTUNITY

FOR SALE

Craig A. STANFIELD
REAL ESTATE BROKER
AUCTIONEER

Equal Housing Opportunity (606) 798-2009
(606) 301-3350

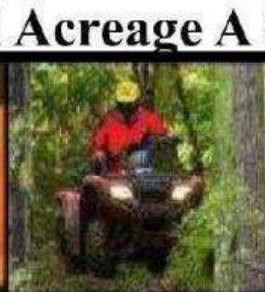
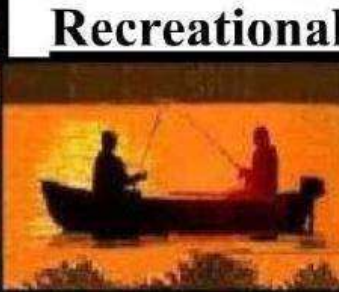
Be sure to check out my website:
www.stanfieldproperty.com

E-mail: info@stanfieldproperty.com

Craig A. STANFIELD
 REAL ESTATE BROKER
 AUCTIONEER

Member, Realtors' Association of New York State
 2008 N.Y. State Auctioneer

(606) 798-2009
 (606) 301-3350



Recreational Acreage A Specialty!

FOR SALE

Craig A. STANFIELD
 REAL ESTATE BROKER
 AUCTIONEER

Equal Housing Opportunity
 (606) 798-2009
 (606) 301-3350

Be sure to check out my website:
www.stanfieldproperty.com
 E-mail: info@stanfieldproperty.com



MASON CO.
70 ACRE
HUNTING
RETREAT

Located off Springdale Road, this mostly wooded tract of land (improved with a small shared pond and some food plot areas) offers excellent hunting/recreational potential, being sold to settle an estate and **JUST \$210,000!!!**



FOR SALE

S
A
L
E

(606) 301-3350

EQUAL HOUSING OPPORTUNITY

FOR SALE

Craig A. STANFIELD
 REAL ESTATE BROKER
 AUCTIONEER

Equal Housing Opportunity
 (606) 798-2009
 (606) 301-3350

Be sure to check out my website:
www.stanfieldproperty.com
 E-mail: info@stanfieldproperty.com




Craig A. STANFIELD
 REAL ESTATE BROKER
 AUCTIONEER


KAA
 ASSOCIATION

(606) 798-2009
(606) 301-3350



AA HWY' FRONTAGE & ENTRANCE



CLOSE-UP AA HWY ENTRANCE



FRONTAGE ON STONELICK ROAD

NEW LISTING!!!
MASON CO. 6.646 AC.
fronting on the AA HWY and
Stonelick Road.
PROPERTY HAS ACCESS IN
PLACE ON "AA HWY!"
PROPERTY HAS IN EXCESS OF
1,000 LINEAR FEET OF
FRONTAGE ON BOTH THE "AA
HWY" (KY 9) AND STONELICK
ROAD (KY 1448). WATER AND
ELECTRIC AVAILABLE.
ZONED A-2 AGRICULTURAL

CALL CRAIG TODAY!



Craig A. STANFIELD
REAL ESTATE BROKER
AUCTIONEER
Equal Housing Opportunity
(606) 798-2009
(606) 301-3350
www.stanfieldproperty.com



Craig A. STANFIELD
REAL ESTATE BROKER
AUCTIONEER
(606) 798-2009
(606) 301-3350

WE SELL REAL ESTATE!
Residential, Multi-Family
Commercial Agricultural
Recreational & Get-Away
Whitetail Deer & Wild
Turkey Hunting Retreats!

CRAIG A. STANFIELD
(606) 301-3350
Check us out online:
www.stanfieldproperty.com
info@stanfieldproperty.com
CRAIG A. STANFIELD
REAL ESTATE BROKER
AUCTIONEER

STANFIELD CORNER
OFFICE KY 10 & KY 57

MAYSVILLE COMMERCIAL POTENTIAL

Craig A. STANFIELD
REAL ESTATE BROKER
AUCTIONEER
(606) 798-2009
(606) 301-3350
www.stanfieldproperty.com

FOR SALE
(606) 301-3350

Craig A. STANFIELD
REAL ESTATE BROKER
AUCTIONEER
(606) 798-2009
(606) 301-3350
www.stanfieldproperty.com



Craig A. STANFIELD
REAL ESTATE BROKER
AUCTIONEER
Equal Housing Opportunity
(606) 798-2009
(606) 301-3350
www.stanfieldproperty.com

Craig A. STANFIELD
REAL ESTATE BROKER
AUCTIONEER
(606) 798-2009
(606) 301-3350
www.stanfieldproperty.com

FOR SALE
(606) 301-3350

Craig A. STANFIELD
REAL ESTATE BROKER
AUCTIONEER
(606) 798-2009
(606) 301-3350
www.stanfieldproperty.com

LEXINGTON STREET, MAYSVILLE - Lot fronting on Lexington Street just off KY 11 and extending to Limestone Terrace offering good highway visibility with a pole barn, lot extends to Limestone Terrace and further improved with a doublewide and attached garage (poor condition, price reflects condition; however the doublewide is rented and producing income). PRICED TO SELL \$35,000!

PLAT OF SURVEY CALLS DAVID RAIVELY/BRAD PRITCHARD PROPERTY LEXINGTON ST. EXT. & LIMESTONE TERRACE, MAYSVILLE, MASON COUNTY, KY

AREA AND COLOR RECORDED IN THE MASON COUNTY CLERK'S OFFICE
20015.398441405 square feet
0.45926075393492 acres (+/- 0.003977 acres) Perimeter: 390.05 feet
Closest: N 18.12° W 51.600051' (+/- 0.80574890282) to R 113 perimeter error

LEGAL DESCRIPTION
LOTS 1 and 2 of FLEMING HEIGHTS
SUBDIVISION as shown and designated on the Plat of said subdivision as recorded in Plat Cabinet 1, Slide 81, Mason County Court Clerk Records.



Plat of the property conveyed to David Raively and Brad Pritchard by deed of Ronald McPherson and Lana McPherson, said deed dated the 28th day of December, 2023, said deed recorded in Deed Book 391 page 777 Mason County Court Clerk Records. The deed conveyed Lots 1 and 2 of Fleming Heights Subdivision as designated on the Plat of said subdivision recorded in Plat Book 1, Page 81 from Plat Cabinet 1, Slide 81, Mason County Court Clerk Records.

Plat formed by viewing the Plat of Fleming Heights as referenced herein. Said plat was prepared by James Howard Paffine, KY Registered Land Surveyor # 723, by Wilbur Smith & Associates, survey dated July 18, 1972.

The reason for this plat was to determine the lot area of Lots 1 and 2 as no lot areas were stated listed on the Plat of Fleming Heights. The Tract Plotter Computer Program formed an approximate area of the two lots (combined) of .459+ acres, however is formed based upon an indicated closure error of 5.109+ feet.

For purposes of this assignment, the preparer reversed the calls to a counter-clockwise direction. This plat was prepared by Craig A. Stanfield, Real Estate Broker & Auctioneer, of Craig A. Stanfield Real Estate and Auction Services. The plat was formed using DTM3+ information obtained from the recorded plat (Fleming Heights) as referred to herein, and was not prepared by a surveyor, engineer or other professional, one with the use or utilization of a transit or other "on-site" measuring device. This plat was prepared for the exclusive use of the preparer in the marketing of the property shown herein, date of preparation April 3-4, 2024. All Rights Reserved.

PLAT OF FLEMING HEIGHTS as recorded in Plat Cabinet 1, Slide 81 Mason County Court Clerk Records, Lots 1 and 2 highlighted in "yellow"



The information contained herein is for informational purposes only, to be processed "as is" and not valid unless presented in its entirety which includes the Legal Description, Plat of Survey Calls, monumentation, and a copy of the recorded Plat from which the majority of information is gleaned and is not intended to be a substitute for "on site" physical/visual diligence inspection.

FOR SALE
(606) 301-3350

CRAIG A STANFIELD REAL ESTATE & AUCTION SERVICES AND STANFIELD AUCTION CENTER (former Tollesboro High School) TOLLESBORO, KY
Selling Agricultural, Hunting, Wooded and Getaway Acreages, as well as Residential and Commercial Real Estate, both conventionally or at auction. We sell antiques and collectibles, entire estates, farm equipment and more! Contact Craig today to place his sign on your property today!! Phone (606) 301-3350 Email: info@stanfieldproperty.com
40 Years Experience in the Real Estate & Auction Business!
Call, Come to put his sign on your property TODAY!!!
Check us out online at www.stanfieldproperty.com
www.masoncounty.com/masoncourtcasstanfield
LICENSED FOR 40 YEARS (SINCE 1984) IN THE REAL

AUCTION
(606) 301-3350

FOR SALE
Craig A. STANFIELD
REAL ESTATE BROKER
AUCTIONEER
Equal Housing Opportunity
(606) 798-2009
(606) 301-3350
www.stanfieldproperty.com

Craig A. STANFIELD
REAL ESTATE BROKER
AUCTIONEER
(606) 798-2009
(606) 301-3350
www.stanfieldproperty.com
info@stanfieldproperty.com
CRAIG A. STANFIELD
REAL ESTATE BROKER
AUCTIONEER

2003 KY STATE CHAMPION AUCTIONEER



**Cabin Creek Covered Bridge
Tollesboro,
Lewis Co., KY**



**The Racehorse
"TOLLESBORO" in the
Winner's Circle
(bred, raised, trained
and raced by Calumet
Farm)**



**Fleming County's
Picturesque
Goddard Covered
Bridge, Goddard, KY
(portal view with church
in background).**

Videos have been professionally produced about these local sites/subjects. To view the videos and learn more about the above, type the following URLs into your web-browser:

The Cabin Creek Covered Bridge:

<https://www.youtube.com/watch?v=jTEeh2ShgLk>

The Racehorse "Tollesboro" and the connection to Racing Royalty:

<https://www.youtube.com/watch?v=27RdavPqgxQ&t=613s>

The Goddard Covered Bridge:

<https://www.youtube.com/watch?v=QolHPiwzAZ4>

Video productions were sponsored by:

 Craig A. Stanfield Real Estate & Auction Services 14250 W. Ky 5, Tollesboro, KY 41189	 A.W. GRAHAM LUMBER, LLC 107 W. Main St. Tollesboro, KY 41189 (606) 798-1000 www.grahamlumber.com	 HINTON MILLS SINCE 1918 Serving Farmers www.hintonmills.com	 ECONOMY BALL MILL JSB 14651 KY 57, Tollesboro, KY 41189 www.economyballmill.com Phone (606) 798-JSB1 (5724)
 RIP'S FARM CENTER 14250 W. Ky 5, Tollesboro, KY 41189	 TOLLESBORO LIONS CLUB SERVING SINCE 1954	 Primary Plus www.primaryplus.net Versailles Tollesboro Flemingburg Mayville Bracken South Shore Ashland Grayson Ripley	
 L&L AUTO SERVICE SALES & RECYCLING 14250 W. Ky 5, Tollesboro, KY 41189 606-798-6307	 BRUNER Land Company Inc. Paul and Karen Chapman (740) 459-9031	 JACKIE'S DEER LURES To make your hunting trip a success, check out our full line of deer lures and scent covers!	

**CRAIG A. STANFIELD REAL ESTATE & AUCTION SERVICES; RIP'S FARM CENTER;
A.W. GRAHAM LUMBER; HINTON MILLS; TOLLESBORO LIONS CLUB;
PRIMARY PLUS; JSB INDUSTRIAL SOLUTIONS/ECONOMY BALL MILL;
BRUNER LAND COMPANY/PAUL & KAREN CHAPMAN;
L&L AUTO SERVICE & RECYCLING; JACKIE'S DEER LURES.**



The office as it appeared at time of purchase, 2003, prior to the first renovation and prior to the use of the building as the office of Craig A. Stanfield Real Estate & Auction Services.

JANUARY, 2003



The Grand Opening of Craig A. Stanfield Real Estate & Auction Services's new location was celebrated last week. A ribbon-cutting was held May 12 at the new office located at the intersection of Routes 10 and 57 in Tollesboro. On hand for the ceremony were (L to R): Craig A. Stanfield, owner/broker/auctioneer Craig A. Stanfield Real Estate and Auction Services; Lewis County Sheriff Bill Lewis; Lewis County Judge Gregory Saxe; Applegate, grandchild Beverly Sue Hatcher; Stanfield's friend Beverly Kaffard; Jersey Mike Stanfield, Stanfield's niece and daughter of Brian and Sue Stanfield; grandchild (Haleigh Laracene Hatcher); Stanfield's mother Joanne Stanfield; and auctioneer Eric Davis. The ribbon-cutting ceremony was held on the birthday of Craig's father (deceased) Buford Stanfield (1940-1982).

ORIGINAL OFFICE GRAND OPENING, MAY 12, 2004



Above left: The Kentucky Stone art installation placed at the office of Craig A. Stanfield Real Estate & Auction Services at the intersection of KY 10 and KY 57 at Tollesboro. Above, right: The Craig A. Stanfield Real Estate & Auction Services office in daylight and at night.



Just as the office has changed through the years, so have Craig & Beverly. Above, the office today. Craig & Bev in 2000; Craig & Bev in 2014. Craig & Bev (with grand-daughter Kennedy) in 2024 at the Kentucky Derby.

CRAIG A. STANFIELD REAL ESTATE & AUCTION ART INSTALLATION AT OFFICE

Craig and Beverly Stanfield, the owners of the office of Craig A. Stanfield Real Estate & Auction Services of Tollesboro, are proud to announce the creation of an art installation at the office in Tollesboro. This art installation is created to celebrate Craig's 40th Year licensed in the Real Estate and Auction Fields. In the 40 years Craig has been licensed in both the real estate and auction fields, Craig served two terms as the President of the Pioneer Trace Board of Realtors and was awarded the title 2003 Kentucky State Champion Auctioneer. Craig has listed and sold several tracts of land in excess of 1,000 acres in size, and has sold multiple properties for in excess of \$1,000,000 (including one at auction). As an auctioneer, Craig performs numerous benefit auctions each year, and has conducted benefit auctions to support Lions Clubs (Tollesboro, Orangeburg, Vanceburg), Fire Departments (Tollesboro, Mt. Carmel, Orangeburg, Highland Hts.), churches and schools, and non-profits (including St. Jude's, Shriners, Special Olympics, Red Cross, Ducks Unlimited, National Wild Turkey Federation, Lewis County Shooting Sports/Lewis County Friends of the NRA, the Kentucky Gateway Museum, the Mason County Younker Womens Club, the Women's Crisis Center/ION Center, CASA (Court Appointed Special Advocate), Ruggles Methodist Campground, The Mason County Livestock Improvement Association/Germantown Fair Livestock auction, and numerous individuals suffering from health issues.

In non-real estate related activities, Craig has been a member of the Tollesboro Lions Club for 34 years and is the Club's current President (serving his 10th term as President). Craig is a member of both Ringgold and DeKalb Lodges of the Independent Order of Odd Fellows (he has served 3 terms as Noble Grand of Ringgold Lodge) and a member/past Chief Patriarch of the Pisgah Encampment and a charter member/Captain of the James J. Welch Canton. On the state level, he is the current Deputy Grand Master of the Grand Lodge of Kentucky Independent Order of Odd Fellows; a past Grand Patriarch of the Grand Encampment Independent Order of Odd Fellows, and a Colonel in the Grand Department Council Independent Order of Odd Fellows; Craig served 24.5 years on the Board of Directors of Buffalo Trace Area Development (BTADD), as a member of the Executive Committee and served as Board Chairman (2016) and the current (long-term) chairman of the BTADD Revolving Loan Fund Committee. He also served on the Kentucky Council Area Development Districts (KCADD) and served as the Chairman (2019) of the Board. He is the current chairman of the Lewis County Municipal Planning Commission; a past chair of the Tollesboro Industrial Park Site Advisory Committee; a former member of the Vanceburg Lewis County Industrial Development Board; and served as Chairman of the Lewis County Property Valuation Administration Appeals Board. Member/Vice President of the Mason County Men's Club. Designated as a Kentucky Colonel by Governor Paul Patton; appointed by Governor Andy Beshear to fill an unexpired term of as Lewis County Judge Executive. A member of St. Patrick Catholic Church (Maysville).

The art installation includes a Kentucky shaped stone set upon a stone foundation. Craig has owned the foundation stones for over 10 years. They had originally been part of a house in Vanceburg that was reportedly razed for construction of a bank. The foundation stones were hand cut, sandstone, originally from a Lewis County quarry (much like those used in the construction of the Lewis County Courthouse), and are incised with diagonal lines to form diamond shapes. One of the stones (that upon which the Kentucky shaped stone is laid) has dimpling (fish-scale) similar to that appearing on a golf ball. The Kentucky stone was one of several cut out by an Amish craftsman (whose health would not permit him to continue to make these) and created from Mason County Limestone (likely taken from along right of way of one of the euts in a hill of one of the state-roads in Mason County, possibly KY 11, US 68, or the Clyde T. Barbour Bridge Access Road??). The Kentucky stone is over 5' in length. Craig purchased the Kentucky stone in 2022.

Craig had the installation created just in time for the Annual Tollesboro Lions Club Fair Parade.

The installation was a quite involved process and included pouring a concrete slab (concrete work performed by Alan Henderson), laying the foundation stones (the stone mason was Trevor Highfield), placing the Kentucky stone (Alan Henderson operated a loader and Trevor and Craig laid the stone), and pressure-washing (Wade Adams pressure washed the stone and the office building). The stones are affixed together with mortar although the foundation stones would have originally been dry-laid without mortar.

Craig's office is located at the intersection of KY 10 and KY 57 at Tollesboro. Craig purchased the property in 2003, an old 4 room residential property that Craig converted to commercial use requiring significant renovation. He renovated the property before a grand-opening event in 2004 (new siding, commercial windows, electrical wiring, plumbing, adding a circular staircase to permit the basement to be accessed from the main level rather than requiring one to access from the exterior, insulation, new bathroom and kitchen, floor-covering refinish/replacement/repair, replacing the doors with solid wood paneled doors with the addition of antique bronze doorknobs, new exterior doors, a rear deck and front porch, landscaping, flagpole, etc., etc.). Since then, the property has undergone additional improvements (replacing the roof, adding covered porches to the KY 57 side of the structure and increasing the size of the deck, adding some stone siding to the structure, adding a copper-roofed cupola with copper weathervane and two copper finials to the roofline, placing a mantle/fireplace in the interior, renovating the bathroom, and more). There are four stained-glass windows, two visible from the outside, one octagonal, the other rectangular (the rectangular stained glass window was custom made, matching Craig's real estate sign), with two visible from the interior. Last year, just in time for the Tollesboro Lions Club Parade, Craig added a screened-in gazebo to the property. It was placed on a concrete slab that Craig has since covered with slate stone. He also added a copper-roofed cupola and a copper finial to the roof of the gazebo in homage to the office building. The gazebo is well-lit with solar lighting.

FOR SALE
Craig A. STANFIELD
 REAL ESTATE BROKER
 AUCTIONEER
 Home (606) 798-2009
 Office (606) 301-3350
 www.stanfieldproperty.com
 E-mail: info@stanfieldproperty.com

FOR SALE
(606) 301-3350
 REAL ESTATE BROKER
 AUCTIONEER

FOR SALE
Craig A. STANFIELD
 REAL ESTATE BROKER
 AUCTIONEER
 Home (606) 798-2009
 Office (606) 301-3350
 www.stanfieldproperty.com
 E-mail: info@stanfieldproperty.com

FOR SALE
Craig A. STANFIELD
 REAL ESTATE BROKER
 AUCTIONEER
 Home (606) 798-2009
 Office (606) 301-3350
 www.stanfieldproperty.com
 E-mail: info@stanfieldproperty.com

AUCTION
(606) 301-3350
 REAL ESTATE BROKER
 AUCTIONEER

FOR SALE
Craig A. STANFIELD
 REAL ESTATE BROKER
 AUCTIONEER
 Home (606) 798-2009
 Office (606) 301-3350
 www.stanfieldproperty.com
 E-mail: info@stanfieldproperty.com

CELEBRATING 40 YEARS LICENSED IN THE REAL ESTATE & AUCTION BUSINESS!!!

FOR SALE

Craig A. STANFIELD
 REAL ESTATE BROKER
 AUCTIONEER

Equal Housing Opportunity
 (606) 798-2009
 (606) 301-3350

Be sure to check out my website!
www.stanfieldproperty.com
 E-mail: info@stanfieldproperty.com



CRAIG A. STANFIELD
 REAL ESTATE &
 AUCTION SERVICES

LICENSED
SINCE 1984!

40 YEARS IN THE
REAL ESTATE &
AUCTION
BUSINESS!!!

CONVENIENTLY
LOCATED AT
THE
INTERSECTION
OF KY 57 & KY 10,
TOLLESBORO,
LEWIS CO., KY!

CRAIG A. STANFIELD
REAL ESTATE BROKER &
AUCTIONEER,
STANFIELD AUCTION CENTER

(Former Tollesboro High School)
 Call **CRAIG** for **ALL** your **REAL ESTATE**
 & **AUCTION NEEDS!** Selling **ALL**
TYPES of **REAL ESTATE**, Antiques,
 Collectibles, Farm Equipment, and
WHOLE ESTATES!

CRAIG STANFIELD (606) 301-3350

info@stanfieldproperty.com

www.stanfieldproperty.com

CONGRATULATIONS
TO THE GRADUATES!!!



FOR SALE

★ S ★
★ A ★
★ L ★
★ E ★

(606) 301-3350


 EQUAL HOUSING OPPORTUNITY

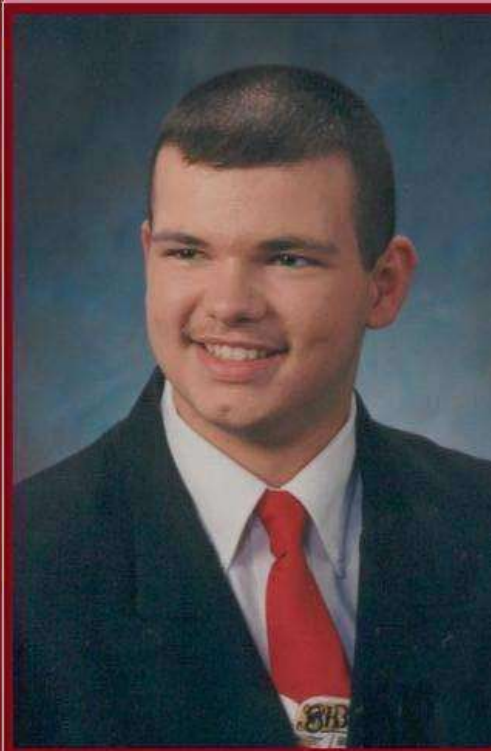
FOR SALE

Craig A. STANFIELD
 REAL ESTATE BROKER
 AUCTIONEER

Equal Housing Opportunity
 (606) 798-2009
 (606) 301-3350

Be sure to check out my website!
www.stanfieldproperty.com
 E-mail: info@stanfieldproperty.com

 Member
 KY Auctioneers Assn.



IN MEMORY OF
CULLEN
ALAN
STANFIELD

1984-2004

TAKEN TOO SOON.
12 YEARS PERFECT
ATTENDANCE.
GRADUATED 2ND IN
CLASS.

HELD DOWN 2 JOBS,
ON CALL FOR 2
ADDITIONAL JOBS,
VOLUNTEER WITH
RESCUE SQUAD
& ATTENDING COLLEGE

CULLEN WOULD HAVE TURNED 40 THIS
YEAR, BUT HE WAS TRAGICALLY KILLED AGED 20
IN AN ACCIDENT NOT OF HIS FAULT, BY A PERSON
WHO'S NAME IS NOT WORTHY OF MENTION HERE.
NO WEDDING, NO CHILDREN. GONE TOO SOON!

DIED A CHRISTIAN WITH
CRUCIFIX AROUND NECK



FOR ALL YOUR REAL ESTATE & AUCTION NEEDS, CONTACT
CRAIG A. STANFIELD
REAL ESTATE & AUCTION
SERVICES
CRAIG A. STANFIELD REAL
ESTATE BROKER &
AUCTIONEER

*Licensed in the Real Estate & Auction Fields Since 1984!
 40 Years in the Business!!!*

2126 W. KY 10, TOLLESBORO, KY 41189

Phone (606) 301-3350

EMAIL: info@stanfieldproperty.com

WEBSITE: www.stanfieldproperty.com



Office Located At The Intersection Of KY 10 and KY 57, Tollesboro, Lewis County, Kentucky



34 Year Member, 10 Term President, Tollesboro Lions Club.

FOR SALE
 Craig A. STANFIELD
 REAL ESTATE BROKER
 AUCTIONEER
 (606) 798-2009
 (606) 301-3350
 Be sure to check out our website:
www.stanfieldproperty.com

Call Craig today and have him put his sign on your property!

Selling Residential, Agricultural, Recreational, Multi-Family, Get-Away or Commercial Real Estate, Conventionally or At Auction!!!

ALSO Coins, Guns, Collectibles, Antiques, Automobiles, Farm Equipment Or WHOLE ESTATES at AUCTION!!!

AUCTION
 (606) 798-2009
FOR SALE
 Craig A. STANFIELD
 REAL ESTATE BROKER
 AUCTIONEER
 Equal Housing Opportunity (606) 798-2009
 Opportunity (606) 301-3350
 Be sure to check out my website:
www.stanfieldproperty.com
 E-mail: info@stanfieldproperty.com

Auctions are advertised online at:
www.auctionzip.com/auctioneer/castanfield

LICENSED SINCE 1984 IN THE REAL ESTATE & AUCTION TRADES - 2024 MARKS 40 YEARS IN THE BUSINESS!!!



Craig A. STANFIELD
REAL ESTATE BROKER
AUCTIONEER

2003 KENTUCKY STATE CHAMPION AUCTIONEER

(606) 301-3350

(606) 798-2009

EMAIL: info@stanfieldproperty.com



Be sure to check out my website:
www.stanfieldproperty.com

FOR SALE
 Craig A. STANFIELD
 REAL ESTATE BROKER
 AUCTIONEER
 Equal Housing Opportunity (606) 798-2009
 Agency (606) 301-3350
 Be sure to check out my website:
www.stanfieldproperty.com
 E-mail: info@stanfieldproperty.com

FOR SALE
 (606) 301-3350

FOR SALE
 Craig A. STANFIELD
 REAL ESTATE BROKER
 AUCTIONEER
 Equal Housing Opportunity (606) 798-2009
 Agency (606) 301-3350
 Be sure to check out my website:
www.stanfieldproperty.com
 E-mail: info@stanfieldproperty.com



→ AUCTION →

→ FOR SALE →

FOR SALE
 Craig A. STANFIELD
 REAL ESTATE BROKER
 AUCTIONEER
 Equal Housing Opportunity (606) 798-2009
 Agency (606) 301-3350
 Be sure to check out my website:
www.stanfieldproperty.com

CRAIG A. STANFIELD
 (606) 301-3350

CRAIG A STANFIELD REAL ESTATE & AUCTION SERVICES AND STANFIELD AUCTION CENTER (former Tollesboro High School) TOLLESBORO, KY

Selling Agricultural, Hunting, Wooded and Getaway Acreages, as well as Residential and Commercial Real Estate, both conventionally or at auction. We sell antiques and collectibles, entire estates, farm equipment and more! Contact Craig today to place his sign on your property today!! Phone [\(606\) 301-3350](tel:6063013350)
 Email: info@stanfieldproperty.com

40 Years Experience in the Real Estate & Auction Business!!



Call Craig to put his sign on your property TODAY!!

Check us out online at www.stanfieldproperty.com
www.auctionzip.com/auctioneer/castanfield

LICENSED FOR 40 YEARS (SINCE 1984!) IN THE REAL ESTATE & AUCTION TRADES!

FOR SALE
 Craig A. STANFIELD
 REAL ESTATE BROKER
 AUCTIONEER
 Equal Housing Opportunity (606) 798-2009
 Agency (606) 301-3350
 Be sure to check out my website:
www.stanfieldproperty.com
 E-mail: info@stanfieldproperty.com

AUCTION
 (606) 301-3350

FOR SALE
 Craig A. STANFIELD
 REAL ESTATE BROKER
 AUCTIONEER
 Equal Housing Opportunity (606) 798-2009
 Agency (606) 301-3350
 Be sure to check out my website:
www.stanfieldproperty.com
 E-mail: info@stanfieldproperty.com

TOLLESBORO, KENTUCKY



Above left: The Kentucky Stone art installation placed at the office of Craig A. Stanfield Real Estate & Auction Services at the intersection of KY 10 and KY 57 at Tollesboro. Above, right: The Craig A. Stanfield Real Estate & Auction Services office in daylight and at night.



The office as it appeared at time of purchase, 2003, prior to the first renovation and prior to the use of the building as the office of Craig A. Stanfield Real Estate & Auction Services.

JANUARY, 2003



The Grand Opening of Craig A. Stanfield Real Estate & Auction Services' new location was celebrated last week. A ribbon cutting was held May 12 at the new office located at the intersection of Routes 10 and 57 in Tollesboro. On hand for the ceremony were: Mr. Craig A. Stanfield, owner/broker/real estate agent, Stanfield Real Estate and Auction Services, Lewis County Sheriff Bill Lewis, Lewis County Judge Loretta Moore, Judge Peter J. Grubb, Lewis County Clerk, Stanfield's daughter, Jennifer Stanfield, Lewis County Sheriff's Office, Stanfield's wife and daughter of Steve and Jane Stanfield, Stanfield's daughter, Jennifer Stanfield, Stanfield's mother, Susan Stanfield, and Stanfield's wife, Jennifer Stanfield. The ribbon cutting ceremony was held at the direction of Craig A. Stanfield, Real Estate & Auction Services, 1200 S. 10th St., Tollesboro, KY 40389. Email: info@stanfieldrealestate.com

ORIGINAL OFFICE GRAND OPENING, MAY 12, 2004

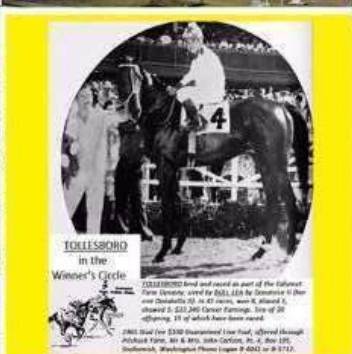
CRAIG A. STANFIELD REAL ESTATE & AUCTION SERVICE

CELEBRATING 40 YEARS LICENSED IN THE REAL ESTATE & AUCTION BUSINESS!!!

Scenes & History Tollesboro & Lewis County, Kentucky

Scenes of Lewis County, Kentucky

Below: The Historic and Scenic Cabin Creek Covered Bridge. Right: The Lewis County Courthouse and Soldier's Monument. Below, right: The Racehorse Tollesboro (bred, owned, trained and raced by Calumet Farm, named in honor of her birthplace by Calumet Farm Owner Lucille Voorhees Parker Wright Markey, owner of Calumet Farm, philanthropist whose estate - \$500 million - was the namesake contributor to UK's Markey Cancer Center in Lexington).



The Tollesboro High School: Built 1935 after previous school burnt. Operated as a public school through 1994, at which time it was sold by the Lewis County School Board and purchased by the Tollesboro Lions Club. The Tollesboro Lions Club donated the use of the building as a Christian School, which operated until 2013 (the Tollesboro Christian School did purchase the property from the Tollesboro Lions Club in 2008) after which it ceased operations. In 2013, the Tollesboro Christian School sold the property to Craig & Beverly Stanfield. They use the Gymnasium Building as an Auction Facility and donate the use of the older building to Lend-A-Helping-Hand Food Pantry.

Craig A. STANFIELD REAL ESTATE & AUCTION SERVICE
 1200 S. 10th St. Tollesboro, KY 40389
 Phone: (606) 301-3350
 Email: info@stanfieldrealestate.com

FOR SALE
 (606) 301-3350

Craig A. STANFIELD REAL ESTATE & AUCTION SERVICE
 1200 S. 10th St. Tollesboro, KY 40389
 Phone: (606) 301-3350
 Email: info@stanfieldrealestate.com

FOR SALE
Craig A. STANFIELD
REAL ESTATE BROKER
AUCTIONEER
Equal Housing Opportunity (606) 798-2009
(606) 301-3350
Be sure to check out my website:
www.stanfieldproperty.com
E-mail: info@stanfieldproperty.com

FOR

S

A

L

E

(606) 301-3350



EQUAL HOUSING
OPPORTUNITY



CRAIG A. STANFIELD
REAL ESTATE &
AUCTION SERVICES

CRAIG A. STANFIELD
REAL ESTATE BROKER &
AUCTIONEER,
STANFIELD AUCTION CENTER

(Former Tollesboro High School)

Call CRAIG for ALL your REAL ESTATE

& AUCTION NEEDS! Selling ALL
TYPES of REAL ESTATE, Antiques,
Collectibles, Farm Equipment, and
WHOLE ESTATES!

CRAIG STANFIELD (606) 301-3350

info@stanfieldproperty.com

www.stanfieldproperty.com

FOR ALL YOUR REAL ESTATE
AND AUCTION NEEDS!!!

LICENSED
SINCE 1984!

40 YEARS IN THE
REAL ESTATE &

AUCTION
BUSINESS!!!

CONVENIENTLY
LOCATED AT

THE
INTERSECTION
OF KY 57 & KY 10,
TOLLESBORO,
LEWIS CO., KY!

FOR SALE
Craig A. STANFIELD
REAL ESTATE BROKER
AUCTIONEER
Equal Housing Opportunity (606) 798-2009
(606) 301-3350
Be sure to check out my website:
www.stanfieldproperty.com
E-mail: info@stanfieldproperty.com



Member
KY Auctioneers Assn.



EQUAL HOUSING
OPPORTUNITY

INDEPENDENT ORDER OF ODD FELLOWS
GRAND LODGE OF KENTUCKY

THREE ADVANCED BRANCHES

FLT - Friendship, Love, Truth



IOOF - International Order of
Odd Fellows, the 3 Link Society



GRAND
ENCAMPMENT



PATRIARCHS
MILITANT
CANTON



ORDER OF
REBECCA

CONGRATULATIONS GEORGE "SONNY" BRADY, GRAND MASTER 2023-2024.

Compliments
of

CRAIG A. STANFIELD

DEPUTY GRAND MASTER, GRAND LODGE OF KENTUCKY
PAST GRAND PATRIARCH, GRAND ENCAMPMENT OF KY
PAST COMMANDER/COLONEL, DEPARTMENT COUNCIL OF KY
3 TERM PAST GRAND, RINGGOLD LODGE, MAYSVILLE, KY
ASSOCIATE MEMBER, DEKALB LODGE, MAYSVILLE, KY
PAST CHIEF PATRIARCH, JAMES J. WELCH ENCAMPMENT,
MAYSVILLE, KENTUCKY
PAST CAPTAIN, PISGAH ENCAMPMENT, MAYSVILLE, KY
PHONE (606) 301-3350; E-MAIL: info@stanfieldproperty.com

FOR SALE



Craig A. STANFIELD
REAL ESTATE BROKER
AUCTIONEER

Equal Housing Opportunity
(606) 798-2009
(606) 301-3350

Be sure to check out my website:
www.stanfieldproperty.com



CRAIG A. STANFIELD REAL ESTATE & AUCTION SERVICES

CRAIG A. STANFIELD REAL ESTATE BROKER & AUCTIONEER

LICENSED IN THE REAL ESTATE AND AUCTION TRADES SINCE

1984, CELEBRATING 40 YEARS OF SERVICE!!!

MEMBER KENTUCKY AUCTIONEERS ASSN, PAST STATE CHAMPION AUCTIONEER

FOR SALE
Craig A. STANFIELD
 REAL ESTATE BROKER
 AUCTIONEER
 Equal Housing Opportunity
 (606) 798-2009
 (606) 301-3350
 Be sure to check out my website:
www.stanfieldproperty.com

FOR SALE
 ★
 ★
 ★
 ★
 (606) 798-2009

FOR SALE
Craig A. STANFIELD
 REAL ESTATE BROKER
 AUCTIONEER
 Equal Housing Opportunity
 (606) 798-2009
 (606) 301-3350
 Be sure to check out my website:
www.stanfieldproperty.com



→ AUCTION →
→ FOR SALE →

FOR SALE
Craig A. STANFIELD
 REAL ESTATE BROKER
 AUCTIONEER
 Equal Housing Opportunity
 (606) 798-2009
 (606) 301-3350
 Be sure to check out my website:
www.stanfieldproperty.com

CRAIG A. STANFIELD
(606) 301-3350

Check out our online ad at
www.stanfieldproperty.com

www.auctionzip.com/auctioneer/castanfield

CRAIG A. STANFIELD
REAL ESTATE &
AUCTION SERVICES

and
STANFIELD AUCTION
CENTER (the former
Tollesboro High School)
TOLLESBORO, KY

Selling Agricultural, Hunting, Wooded and Getaway Acreages, as well as Residential and Commercial Real Estate, both conventionally or at auction. We sell antiques and collectibles, entire estates, farm equipment and more! Contact Craig today to place his sign on your property today!!! Phone (606) 301-3350 Email: info@stanfieldproperty.com

37 Years Experience
in the Real Estate &
Auction Business!!



Call Craig to put his sign on
your property TODAY!!!

FOR SALE
Craig A. STANFIELD
 REAL ESTATE BROKER
 AUCTIONEER
 Equal Housing Opportunity
 (606) 798-2009
 (606) 301-3350
 Be sure to check out my website:
www.stanfieldproperty.com

AUCTION
 ★
 ★
 ★
 ★
 (606) 798-2009

FOR SALE
Craig A. STANFIELD
 REAL ESTATE BROKER
 AUCTIONEER
 Equal Housing Opportunity
 (606) 798-2009
 (606) 301-3350
 Be sure to check out my website:
www.stanfieldproperty.com



FOR ALL YOUR REAL ESTATE & AUCTION NEEDS, CONTACT
CRAIG A. STANFIELD
REAL ESTATE & AUCTION
SERVICES
CRAIG A. STANFIELD REAL
ESTATE BROKER &
AUCTIONEER

*Licensed in the Real Estate & Auction Fields Since 1984!
 40 Years in the Business!!!*

2126 W. KY 10, TOLLESBORO, KY 41189

Phone (606) 301-3350

EMAIL: info@stanfieldproperty.com

WEBSITE: www.stanfieldproperty.com



Office Located At The Intersection Of KY 10 and KY 57, Tollesboro, Lewis County, Kentucky



34 Year Member, 10 Term President, Tollesboro Lions Club.

FOR SALE
 Craig A. STANFIELD
 REAL ESTATE BROKER
 AUCTIONEER
 (606) 798-2009
 (606) 301-3350
 Be sure to check out our website:
www.stanfieldproperty.com

Call Craig today and have him put his sign on your property!

Selling Residential, Agricultural, Recreational, Multi-Family, Get-Away or Commercial Real Estate, Conventionally or At Auction!!

ALSO Coins, Guns, Collectibles, Antiques, Automobiles, Farm Equipment Or WHOLE ESTATES at AUCTION!!!

AUCTION
 (606) 798-2009
FOR SALE
 Craig A. STANFIELD
 REAL ESTATE BROKER
 AUCTIONEER
 Equal Housing Opportunity (606) 798-2009
 Opportunity (606) 301-3350
 Be sure to check out my website:
www.stanfieldproperty.com
 E-mail: info@stanfieldproperty.com

Auctions are advertised online at:
www.auctionzip.com/auctioneer/castanfield

LICENSED SINCE 1984 IN THE REAL ESTATE & AUCTION TRADES - 2024 MARKS 40 YEARS IN THE BUSINESS!!!



Craig A. STANFIELD
REAL ESTATE BROKER
AUCTIONEER

2003 KENTUCKY STATE CHAMPION AUCTIONEER

(606) 301-3350

(606) 798-2009

EMAIL: info@stanfieldproperty.com



Be sure to check out my website:
www.stanfieldproperty.com

HOW TO CHOOSE:

A REAL ESTATE AGENT OR AN AUCTIONEER

When you are buying or selling a home, it is essential to choose the right real estate agent for your needs.

The best real estate agents are strategic, positive, and proactive, involved in their community, giving and outgoing. A good real estate agent cannot be shy or afraid to interact with people, but rather must be personable and communicative, outgoing with a good personality as well as need to interact with prospective customers and clients. A good agent is involved in local, civic, religious, and charitable organizations, all of which permit the agent to interact with a large number of persons. These persons could not only be the person whom might take an interest in your property, but could — by word of mouth — lead to a person whom might be interested in your property.

An agent who is involved in the real estate business in a full-time capacity is a plus, and an agent who has years of experience is also a plus, assuming that the agent keeps up with technological advances such as those enhanced marketing opportunities made available by the internet. Do not choose an agent only for their years of experience, but choose an agent who makes use of e-mail, the internet, and other emerging technologies and marketing capabilities available.

Selecting the wrong agent can cost you lots of time and money.

So how do you find the best agent for your situation? Here are some ideas to keep in mind.

INTERNET MARKETING/ ONLINE PRESENCE

When considering whom to hire, send an agent an email through their website asking questions about one of their listings (the best agent will respond to your email listing, which may delay their response). Keep in mind that today's buyers make use of the internet and e-mail. Do they respond to your email through their website or do they reply from going into your inbox or the reply may include links to additional information? If so, how quickly? Do they know the property of which you inquired? Did the response make you feel that the agent was knowledgeable? Was the response well worded and professional? Do they have an email list to send you a monthly newsletter? A simple test, but can aid in helping you choose to use or rule out an agent.

MORE RESOURCES

To get a better idea about the process of buying and selling a home, conduct some research on your own. Real estate magazines contain good information and can be a great way to start your research. Ask the agent the name of their website (the agent should know it intimately). Inspect and review the website on your own, or have the agent show you the features that the website offers. Does the website appear professional? Does it appear to be current and updated? Check out some of the listings (this is especially helpful if the agent is present to show the features of the website). Is there a location map? Are there tools for helping describe the property (interactive mapping or layers of varying map types: the potential to download documents about the listing, the ability to upload multiple photos of the listing, etc.). Upon successfully buying or selling your home, keep your real estate agent's contact information on hand. You may want to refer other people to him or her. You may also need their services again someday.

utilize for listing your property, one who has a good online advertising program. The internet is the "go to" approach for most buyers in today's market place and other than a good personality and the ability to interact with prospective customers and clients, it is likely the most important factor to consider in choosing a real estate agent. Does your agent have a database or e-mail list of potential customers looking to buy to whom he can submit monthly e-mails to show what listings are new, under contract, sold, or back on the market? Does your agent make use of the internet to market your property? With all of the technological advances available for marketing real estate, see if the agent/agency uses the Landstar Kentucky (www.landstarkentucky.com) website. This website has outstanding mapping capabilities (make sure also that the agent you choose to utilize uses the mapping feature, that the site offers on the site will "outlocate" a property based upon the address, without the boundary features being utilized. Also, if the address is not recognized, the location marker will default to the center of the 200-acre area rather than the property location).

The agent can not only mark the exact location of the property, but outline the approximate property boundaries in an interactive mapping program. This interactive mapping program can then be used by a prospective purchaser for setting up a drive-by so that the prospect can inspect the exterior of a property to see if it is a location that would be desirable for setting up an appointment. Also, the mapping capabilities of this website allow you to use layers to change the map view from a Satellite (or aerial) view to a Map View, a Hybrid View (a combination of a satellite view with a map view), a Terrain View, and it even offers a Flood Map view feature!

Check out my website www.stanfieldproperty.com

COMMUNITY INVOLVEMENT

A good agent is involved in their community. Ask the agent to provide a biographical sketch to see how they participate in public functions, charitable and civic organizations (even religious organizations), any place where the agent can interact with large numbers of potential prospects. Ask how they give back to their community. Persons who



WHETHER TO SELL AS A CONVENTIONAL REAL ESTATE LISTING OR AT AUCTION, WE HAVE THE SIGN FOR YOUR PROPERTY!!!
CALL CRAIG (606) 301-3350

are active in the public sector meet and greet a significant number of persons, and word of mouth is a valuable method of informing the public about a property and its availability, almost as important as the agent's online presence!

WHERE TO START LOOKING

Recommendations are one of the best ways to find a qualified real estate agent or realtor. Ask people in your social network for referrals.

Sometimes agents are good at helping clients purchase homes, but not as skilled at selling them. Keep that in mind when searching for the right professional.

You might also contact local brokers or search the state licensing directory online. Always work with credible, reputable agents. Otherwise you are wasting your time.

COMFORT LEVEL

At the initial consultation with a prospective real estate professional, focus on your comfort level while interacting with them.

Do you get the feeling they

are genuinely concerned about your needs? Or are they focused on their commission? Do they know the current housing market? Can they negotiate a contract?

It is important that you feel comfortable with the agent. You must trust that this person can behave ethically and help you secure a good deal.

COMMUNICATION AND PLANNING

Your agent should be an effective communicator. If you are selling your home, your agent should develop an effective marketing plan, explain it to you, and respond to any questions or concerns you have.

The marketing plan will probably involve placing advertisements and conducting open houses to invite the public for home viewings.

If you are purchasing a home, the agent should listen to your guidelines and price range.

Above all, your real estate agent needs to provide updates on progress. Do not work with someone who does not return phone calls or emails.



Craig A. Stanfield A Name You Know You Can Trust

CRAIG A. STANFIELD — 39 years experience in the real estate and auction industry, obtained Real Estate Sales Associate and Apprentice Auctioneer licenses in 1984, upgrading to Real Estate Broker and Auctioneer licenses while working 16 years (14 of which were full-time) at another firm, before opening my own Real Estate and Auction firm in 2000. Performed appraisal for 20 years, including as a KY Certified General Real Property Appraiser. Served two terms as President of the Pioneer Trace Board of Realtors, member Kentucky Auctioneers Association (KAA). Won the Kentucky State Champion Auctioneer title in 2003, won awards for KAA Best Outdoor sign and KAA Best Auction Ad Person. Property named 2018 Best of the Best Real Estate Agent by readership of Ledger-Independent newspaper. Very involved in the community, served 24.5 years on the Buffalo Trace Area Development District (BTADD) Board of Directors, Executive Committee, 2 yr term as Board Chairman, long-term member/chairman of the BTADD Revolving Loan Fund Committee, served 7 years on the Kentucky Council of Area Development Districts (KCADD) including chairman, 33 year member of the Tolleboro Lions Club including 8 terms as President, Vice-President of the Mason County Men's Club, 3 term Noble Grand Ringgold Lodge IOOF, member Delta Lodge IOOF, past Chief Patriarch Property Encampment IOOF, Captain James J. Walsh Canton IOOF, current Grand Warden IOOF, Grand Lodge of Kentucky, Department commander, Grand KY Grand Canyon, Past Grand Patriarch KY Grand Encampment IOOF. Appointed to serve as County Judge Executive of Lewis County, 2022. Served on the Lewis County Planning Commission, the Lewis County Industrial Authority, the Tolleboro Industrial Park Site Advisory Committee (chairman), the Lewis County Property Valuation Administration Appeals Board (chairman), Lewis County Health Department Board; the Licking Valley CAP (Community Action Program); Lewis County Extension Office board; and the BTASAP (Buffalo Trace Agency for Substance Abuse Prevention) board. Life member National Rifle Association (NRA) and the Future Farmers of America Alumni Association; a Kentucky Colonel. Conduct numerous auctions each year (at no cost) to benefit Lions Clubs (Tolleboro, Orangeburg, Vincennes), departments (Tolleboro, Mt. Carmel, Orangeburg, Highland Heights), churches, schools, high school athletic groups, Mason County Livestock Improvement Association, Mason Co. IRCTC, PTA/PTO organizations, and the Women's Crisis Center, Ruggles Methodist Campground, Maysville/Mason County Gateway Museum, Lewis County Friends of the NRA, Lewis County Shooting Sports, St. Patrick Church, Tolleboro Christian Church "Hunt for the Gospel", and have conducted auctions to benefit the Mason County Red Cross, the Cincinnati Red Cross, St. Jude Children's Research Center, The Shriners, the National Wild Turkey Federation, Ducks Unlimited, Special Olympics, and more. In 2013, Craig and his wife Beverly purchased the Tolleboro High School property and donate the use of the school building to the Lend-A-Hand Food Pantry (newly 10 yrs.). Have listed and sold 3 tracts of land in excess of 1,000 acres, have sold real estate conventionally and at auction for in excess of \$1 million, have listed and sold property on behalf of the Mason County Fiscal Court, the City of Maysville, the Robertson County Fiscal Court, the City of Mt. Vernon, on behalf of the Fleming County Special Commissioner, and the Mason County Commissioner; have sold property to the Lewis County Fiscal Court and the Commonwealth of Kentucky; and have sold property on behalf of the Cargill Corporation, Clannary Home Missionary, the Kentucky United Methodist Foundation, RBS Salvage, and the Plainview Baptist Church. 2014 Recipient of the Woodmen of the World Chapter 890 "Community Service Award"; the 2015 BTADD "Regionalism Award" for "Outstanding service and dedication to the Buffalo Trace Region." A blood donor (6 gallons), collector of memorabilia from the five counties of the Buffalo Trace Region (Mason, Lewis, Fleming, Robertson and Bracken Counties, Kentucky).

For all your real estate & auction needs, contact

CRAIG A. STANFIELD

REAL ESTATE & AUCTION SERVICES

STANFIELD AUCTION CENTER

MOBILE: (606) 301-3350

2126 W. KY 10
TOLLEBORO, KY 41189

E-mail: info@stanfieldproperty.com
Website: www.stanfieldproperty.com

**FOR
SALE**



**Craig A.
STANFIELD**
REAL ESTATE BROKER
AUCTIONEER



EQUAL HOUSING
OPPORTUNITY

**606-301-3350
606-798-2009**

*MY 40TH YEAR AS A
LICENSEE IN BOTH THE
REAL ESTATE &
AUCTION FIELDS!!!*

*2003 KY STATE
CHAMPION AUCTIONEER* E-mail: info@stanfieldproperty.com
Check out my website: www.stanfieldproperty.com



CRAIG A. STANFIELD REAL ESTATE & AUCTION SERVICES

For all your real estate and auction needs! Selling residential, agricultural, recreational (hunting, fishing, camping and getaway acreages) real estate, entire estates, antiques, collectibles, vehicles and farm equipment. WE SELL IT ALL!!!

CRAIG A. STANFIELD REAL ESTATE BROKER & AUCTIONEER

Phone: (606) 301-3350 • E-mail: info@stanfieldproperty.com

Check us out online at www.stanfieldproperty.com

Licensed in both the real estate and auction fields since 1984!

EXPERIENCE COUNTS!!!

2003 KY State Champion Auctioneer

Member Kentucky Auctioneers Assn.

Life Member National Future Farmers Alumni Association

Proud Supporter of Future Farmers of America



Life Member

→ AUCTION →

→ FOR SALE →

FOR SALE

Craig A. STANFIELD
REAL ESTATE BROKER
AUCTIONEER

Equal Housing Opportunity
(606) 798-2009
(606) 301-3350
www.stanfieldproperty.com

CRAIG A. STANFIELD (606) 301-3350

Check out our online ad at
www.stanfieldproperty.com

www.auctionzip.com/auctioneer/castanfield



**CABIN CREEK
COVERED BRIDGE**



*Tollesboro Station by
James George Armstrong
Win General Ageeb
Paris, Del-Mar Raceback
Aug. 27, 1857*

**THE RACEHORSE
TOLLESBORO
IN THE
WTFNERS CTRIC**



**GODDARD
COVERED BRIDGE**

**LOCAL BUSINESSES SPONSOR PRODUCTION OF VIDEOS ABOUT
LOCAL HISTORIC SITES/EVENTS**

The following local businesses worked together to sponsor the production of videos regarding local historic sites/events in Lewis and Fleming Counties, Kentucky. The videos are available to view on YouTube.com. Three videos were produced, featuring "The Cabin Creek Covered Bridge" in Tollesboro, KY, "The Goddard Covered Bridge" in Fleming County, KY, and "Tollesboro and It's Connection To Horse-Racing's Lucille Markey". The videos were produced by "History In Your Own Backyard", produced by Satolli Glassmyer with Susie Celek conducting the interviews. Businesses that sponsored the project include PrimaryPlus (all locations); Hinton Mills (all locations); A. W. Graham Lumber, LLC of Fleming County; Craig A. Stanfield Real Estate & Auction Services; Rip's Farm Center, Inc.; L & J Auto Center; Bruner Land Company; Jackie's Deer Lures; and JSB Industrial Solutions. The videos are posted on YouTube and available for the public at large to view (they will also be available to view from additional websites). To view the videos, type in the following URLs into your web-browser:

Local Businesses Sponsor

Cabin Creek Covered Bridge, Tollesboro, KY -

https://www.youtube.com/watch?v=jTEUk2Shg_Lk

Tollesboro, KY and It's Connection to Horse-Racing Royalty -

https://www.youtube.com/watch?v=6T0w1jTTe_w

Goddard Covered Bridge, Fleming Co., KY -

<https://www.youtube.com/watch?v=QoIHPiwzAZ4>

FOR SALE
L & J AUTO CENTER
ESTATE & AUCTION SERVICES
606-798-6307

**GRAHAM
A.W.
LUMBER**
A.W. GRAHAM LUMBER, LLC
101 Maple Hill
Tollesboro, KY 41189
(606) 445-9657
www.grahamlumber.com

HINTON MILLS
SINCE 1918
Serving Farmers
www.hintonmills.com

ECONOMY BALL MILL JSB
14651 KY 57, Tollesboro, KY 41189
www.economyballmill.com
Phone (606) 798-JSBI (5724)

RIP'S
FARM CENTER, INC.
1111 Hwy. 100, East Tollesboro, KY 41189 Phone: (606) 445-9700

LIONS CLUB
TOLLESBORO, KY
SERVING SINCE 1954
TOLLESBORO LIONS CLUB

PrimaryPlus
www.primaryplus.net
Vanceburg | Tollesboro | Flemingsburg | Mayesville | Beckton
South Shore | Hartsville | Glasgow | Hopkins
www.primaryplus.net

L & J AUTO SERVICE SALES & RECYCLING
TOLLESBORO
606-798-6307
KENTUCKY
VANCEBURG, KY 41189

Land BRUNER Company Inc.
Paul and Karen Chapman
(740) 459-9031

JACKIE'S DEER LURES
100% GUARANTEE
To make your hunting trip a success, check out our full line of deer lures and



Craig A. Stanfield Real Estate and Auction Services Tollesboro, Ky



Craig opened up the business in Tollesboro after having previously been licensed as a real estate sales associate (and later broker) as well as an apprentice auctioneer (and later as an auctioneer) at another Mason County firm, where he was employed for 10 years. Craig has been licensed in the real estate and auction fields continuously since 1984 (full time since 1986). 16 years in another firm and 18 years as the owner of his own firm, thus in business for 34 years! Craig purchased his current office at the intersection of Kentucky 10 and Kentucky 57 in 2004, and in 2013 purchased the Tollesboro High School, the gymnasium of which is now the home of the Stanfield Auction Center.

Craig has listed and sold two tracts of land in excess of 1,000 acres, has sold property to the Lewis County Fiscal Court, has sold property for the City of Mount Olivet and the County of Robertson as well as to the Commonwealth of Kentucky, and has sold a parcel of land at auction for in excess of \$1 million dollars. Mr. Stanfield has also sold confiscated weapons on behalf of the Kentucky State Police, the proceeds of which are used for the purchase of bullet-proof vests.

Craig volunteers his time to conduct many charity auctions (typically around 20 each year) to benefit local churches/religious organizations, schools, fire departments, Lions Clubs, Womens Crisis Center, JROTC, and other non profit organizations annually, and is actively involved in civic affairs, serving 20 years as board



1 of 10 (Dishwasher) Dark Knight GTCC at a recent auction

member/past chair of Executive Committee, the Board of Directors, and the Revolving Loan Fund for the Buffalo Trace Area Development District (BDADD), which presented Mr. Stanfield with the 2015 "Regionalism Award"; current treasurer Kentucky Council of Area Development Districts (KCADD); member Lewis County Industrial Development Authority; chairman Tollesboro Industrial Park Site Advisory Committee; member/past treasurer of the Lewis County Planning Commission; 41



A Heavy 19th Century Chestboard brought \$3200 at a recent auction

pendent Order of Our Friends (OOF); Kingwood Lodge No. 27 of Maysville; member Larkins Lodge No. 12, OOF, Maysville, L.R.E. member National Rifle Association and the Future Farmers of America Alumni Association; a Kentucky Colonel. Craig won the prestigious Kentucky Auctioneers Association (KAA) Bid-Calling Championship in 2003, and in 2014 was awarded the Best Outdoor Signage award by the KAA. Also in 2014, he was awarded the "Community Leadership Award" by Woodmen of the World Lewis County Chapter 890 and was chosen the "Best of the Best Real Estate Agent" by the readership of The Ledger Independent newspaper in Maysville.

Also, Craig is a collector of local memorabilia from the five-county Buffalo Trace Region (Bracken, Fleming, Lewis, Mason, and Robertson counties), always looking to buy rare items from any of the towns and small communities within the region.

Basically a lifelong resident of Tollesboro, Craig is married to Beverly Gifford Stanfield and is the father of three children, Cullen (1984-2004), Bethany (Mrs. Brett Russell), and Kaitlyn (Mrs. Cody Shannon). Craig is a member of St. Patrick Catholic Church of Maysville.



Edward G. Gurtis Vanishing Race for Gold 60000 at the July 23, 2016 Keith Estate Auction



info@stanfieldproperty.com

Craig A. STANFIELD
REAL ESTATE BROKER
AUCTIONEER

KAA
ASSOCIATION

(606) 798-2009
(606) 301-3350

REALTOR



Be sure to check out my website:
www.stanfieldproperty.com

FOR SALE
Craig A. STANFIELD
 REAL ESTATE BROKER
 AUCTIONEER
 Cell: (606) 798-2009
 Home: (606) 301-3350
 www.stanfieldproperty.com

FOR SALE
 (606) 798-2009



FOR SALE
Craig A. STANFIELD
 REAL ESTATE BROKER
 AUCTIONEER
 Cell: (606) 798-2009
 Home: (606) 301-3350
 www.stanfieldproperty.com

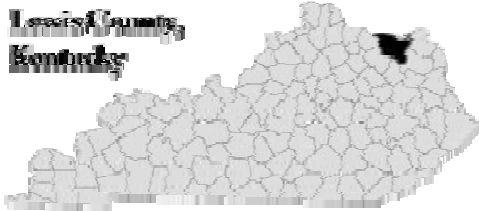


LOOKING TO PURCHASE A TRACT OF LAND TO HARVEST A TROPHY WHITETAIL OR WILD TURKEY???

**CRAIG A. STANFIELD
 REAL ESTATE AND
 AUCTION SERVICES,
 CRAIG A. STANFIELD
 REAL ESTATE BROKER &
 AUCTIONEER**

SELLING LEWIS CO., KY HUNTING LAND!!!
Call Craig A. Stanfield, 606-798-2009!!!

LEWIS CO., KENTUCKY HAS A NATIONWIDE REPUTATION FOR IT'S OUALITY TROPHY WHITETAIL DEER AND WILD TURKEY!!!



CHECK OUT OUR INVENTORY OF AFFORDABLE, DESIRABLE HUNTING ACREAGES ONLINE AT www.stanfieldproperty.com

Although we sell all types of real estate --- including residential, multi-family, commercial, agricultural, and industrial, and although we sell all types of land both as conventional real estate offerings as well as by auction --- we promote and sell recreational and hunting acreages of land too!

*We strive to meet the demands and needs of persons wishing to purchase Kentucky Hunting Lands, both in-state and non-resident purchasers! **We have sold THOUSANDS of ACRES of HUNTING LANDS in LEWIS COUNTY, KENTUCKY,** as well as in adjacent counties, have the equipment necessary to show you the property ("two-seater" 4-wheel drive ATV, 4-wheel drive vehicles, etc.), have invested heavily in the necessary equipment to market those properties to you (aerial photography programs, desktop planimeter, hand-held GPS unit, deed-plotter computer programs, e-mail notification of new listings as they become available, etc.), **PLUS** we advertise heavily online to try to locate **YOU**, the hunter and recreationalist who is looking to acquire their own private hunting reserve!!!*

FOR SALE
Craig A. STANFIELD
 REAL ESTATE BROKER
 AUCTIONEER
 Cell: (606) 798-2009
 Home: (606) 301-3350
 www.stanfieldproperty.com

IF YOU ARE IN THE MARKET TO PURCHASE A TROPHY DEER HUNTING PROPERTY --- OR ANY OTHER TYPE OF KENTUCKY REAL ESTATE --- CHECK US OUT ONLINE AT: www.stanfieldproperty.com!!! OR EVEN BETTER, CONTACT CRAIG BY E-MAIL AT: info@stanfieldproperty.com, AND ASK TO BE ADDED TO OUR E-MAIL MAILING LIST, TO RECEIVE MONTHLY LINKS TO OUR CURRENT ADVERTISING, AS WELL AS NOTIFICATIONS RELATIVE TO NEW LISTINGS, PRICE REDUCTIONS, OR UPCOMING AUCTIONS!!!



CRAIG A. STANFIELD
REAL ESTATE & AUCTION SERVICES

Craig A. Stanfield Real Estate Broker & Auctioneer
 2126 W. KY 10 Collesboro, KY 41189
 Phone (606) 798-2009 or (606) 301-3350



E-mail: info@stanfieldproperty.com; Check out my website: www.stanfieldproperty.com

CRAIG A. STANFIELD COLLECTION OF LOCAL MEMORABILIA



I collect items of a regional nature, namely the counties that make up the Buffalo Trace Region: Bracken, Fleming, Lewis, Mason, and Robertson Counties, Kentucky. My wife Bev and I purchased the Tollesboro High School property in 2013. We donate the use of the entire old school building to the Lend A Helping Hand Food Pantry, utilize the “new gym” as an auction facility, renovated and “saved” the Ag. Building into a functional garage (the “band room” was beyond repair and had to be dismantled and removed from the premises). It is my intention that someday I will utilize the cafeteria building as a museum to allow the display of my collection (this will occur within the near future, probably 2 years or so as I want to put a new gable roof over the structure and will have to seal off some windows and make other improvements. I want to put a porch over the front and put brick columns in place of “Maysville” bricks however it will take a large number and I have not found any great number to date, although I have found pallets of brick marked “M. B. Co.” for the Maysville Brick Company which I will use if I cannot locate the “Maysville” bricks. While I have lots of memorabilia to display, I still am lacking the necessary furnishings to properly display the memorabilia, which will also take time to acquire). With the purchase of the Tollesboro High School property, I acquired the trophies, banners, and senior pictures that remained on site which will be on display when the museum is opened (this includes the banner and trophy when the Tollesboro Wildcats basketball team won the 39th District Championship in 1983, my senior year of high school, as well as proclamations from the Lewis County Board of Education, the Lewis County Judge and the Mayor of Tollesboro --- yes, Tollesboro was incorporated at that time --- proclaiming Tollesboro Wildcat Day/Week in recognition of the Championship).



I purchased my first local collectible in 1986, a “yard long” frame with 5 or 6 photos in it, titled “Esculapia Springs, Summer of 1899”. I purchased it at Kachler’s Auction House in Mays Lick where I was employed at that time. I think it cost \$14 and while I do not remember the consignor, I distinctly remember it came out of the attic of a home in either Adams or Brown County, Ohio. Although I haven’t looked at it in a while, I know that there are at least 5 photos and that from left to right, it captured (to the best of my memory, keep in mind that I haven’t looked at it in a while) the following: A young man (teenager?) dressed in a hat, bowtie, suspenders, holding a pistol in his right hand and a rattlesnake that he apparently killed in the left hand. A photo of the same boy, what appears to be his mother, perhaps his father and maybe a sister, picnicking alongside a stone wall or a split-rail fence. The mother is dressed up, maybe a bonnet or a parasol or perhaps a hoop-type skirt? I think the third photo shows the front of the hotel building, a fourth showing the rear of the hotel and a wooden bridge or fence, and the last (whether it is the 5th or 6th) features three African-American minstrels, playing the banjo, mandolin, and the upright bass, DRESSED IN TUXEDOS (really epitomizes the “grandeur” of the establishment).

While my total 1986 purchases was only \$14 or so, in the nearly 30 years that has passed since I acquired my first local collectible, I have spent tens of thousands of dollars acquiring historical memorabilia, really ramping up the annual investment in the past 5 or so years.

In 2013, I acquired some of my best items in my collection to date, including (among other items): An original oil painting by Steve White that was commissioned in 1977 of the Cabin Creek Covered Bridge in fall foliage/colors, large scale, 28” x 52” framed; actual wood from the original 1867-1873 construction of the Cabin Creek Covered Bridge (I intend to have a print of the Cabin Creek Covered Bridge by Steve White framed with actual pieces of wood – poplar – from the original construction of the bridge, identified by Donald Walker of Arnold Gratton Construction as “Splice Blocks”); a small “dry-brush watercolor” by Julia A. Cox of Maysville showing the “View from Front Porch: Maysville

Brick Works, Ohio River and Aberdeen Ohio" (I would guess this to be prior to 1900??); a model hay wagon, highly detailed (wooden spoke wheels, arched fenders, tongue and racks), made of wood, nearly 4' long (counting the tongue) and nearly 18" high (counting the hay racks, front and rear), marked "Forest Wood, 1923, Maysville, KY"; a William H. Cox (Lt. Governor of KY, Maysville native/resident, builder of the Cox Building) pocket watch; an Owens & Barkley Hardware, Maysville, KY straight razor etched "Limestone" on the blade; a J. H. Rogers, Maysville, KY wooden dovetailed whiskey crate; and a rather large colorful sign with great graphics stating "2 miles to Max Block for Clothing, Vanceburg" featuring a hunter loading his shotgun!

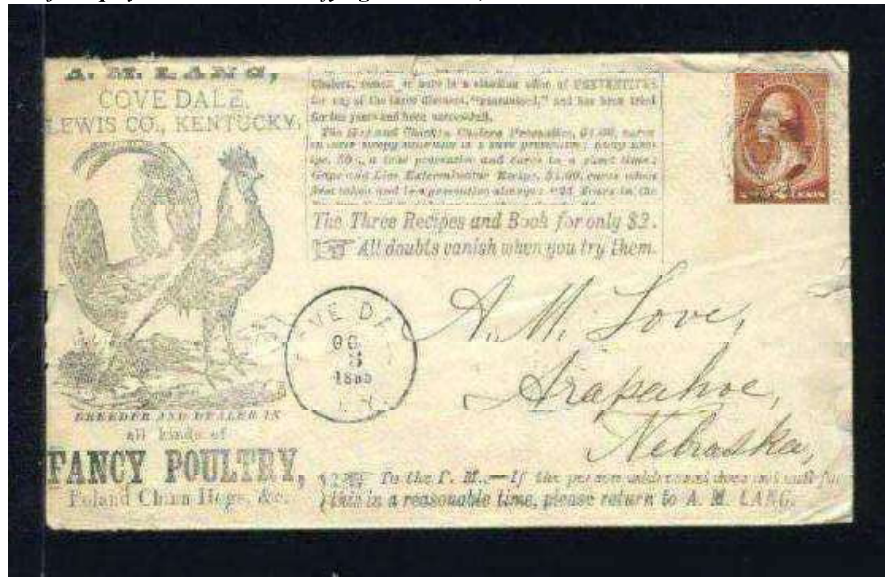


In 2014, I acquired a Vanceburg, KY stone jar (Rugless & Bruce); an "Old Squire Flour" Flemingsburg, KY sign; a US 68 cast-iron highway marker dating to the 1830s; a Trinity, KY Jr. O.U.A.M. badge; a Heselton, KY (Lewis Co.) broadside for a horse standing at stud in 1910 (I also acquired two from Fleming County, one for a horse standing at stud, the other for a jack standing at stud, these dated 1911); a charter member listing of the Tollesboro Chapter Improved Order of Redmen (IORM) Massaseba Tribe # 371; a postcard advertising Ferndale Catsup of Maysville, KY, 1910; a "History of Polar Star Lodge # 363 F & AM" (Vanceburg, KY) by Dugan, 1958; a factory employee pin/badge from Wald's, Maysville, KY (employee photo, identified); two nice Fleming County glass paperweights; a Poyntz Bros. Whiskey advertising corkscrew, Maysville, KY; an advertising cover/envelope from Limestone Whiskey advertising the 1886 Maysville Fair; and a Owens & Barkley Maysville, KY straight razor etched "Maysville" on the blade.





In 2015 added a lot of great items too, including an A. M. Lang, Covedale, KY advertising envelope; signage from the Sand Hill Christian Church; an I.O.R.M. badge from Stonewall (Bracken Co., KY); a nice store advertising piece from Powersville, Bracken Co., KY; a Browning, Maysville, KY belt gauge; a super mounted photograph of the Muse Bros. store in Plummers Landing, KY; a 1910 Muses Mill broadside advertising a horse standing at stud as well as a 1910 horse dispersal catalog from Sherburne, KY; a seed sack from Fairchance Farm, Mays Lick, KY; and a number of Maysville, KY stoneware pieces (mostly M. C. Russell, but also an "N. Cooper & Power" and an "I. Thomas") and several nice Maysville, KY bottles (water, milk, and pharmaceutical). I obtained a great color photo from the early 1950s of the interior of the Mackey Grocery in Concord, KY, and just recently I purchased what is possibly the best (although I am probably biased) Fleming County postcard in existence: The 1907 Flemingsburg Graded High School football team (to put this postcard in context: It is an extremely early high school football postcard; it shows 14 players and the coach; the coach is holding a football, several players are holding their leather helmets, several players are wearing padded clothing, some players have a primitive mouthpiece strung around their necks, one player is holding a pennant with the letters "FGHS" for "Flemingsburg Graded High School". On the reverse, the card is marked "Published by Dan T. Fisher, Jeweler & Optician, Flemingsburg, KY"; it is postmarked Dec., 1907; and there is a personal note from the sender "This is our football team. Played Saturday night. Got beaten". The only way to improve it would have been to have the names of the players and coach identifying who is who).

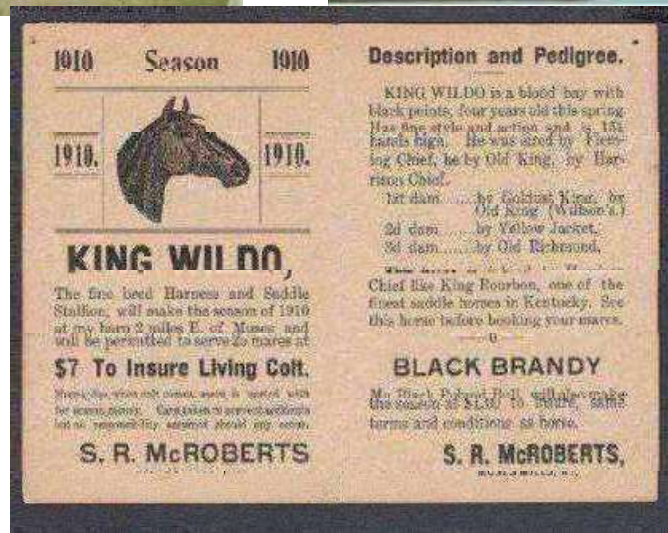


I have a large collection of local tokens, including tokens from Tollesboro, Ribolt, Burtonville, Concord, Vanceburg, Maysville, Sardis, and Flemingsburg. I have a large collection of postcards from the five Buffalo Trace counties. From Lewis County, I have postcards from: Tollesboro, Vanceburg, Kinniconick, Stone Hill (Camp Dix), Quincy, Garrison, Glen Springs, Concord, Trinity, Fearis, and Salt Lick Creek. From Mason County: Maysville, Washington, South Ripley. From Fleming County: Flemingsburg, Nepton, Mt. Carmel, Ewing, Elizaville, Hillsboro, Sherburne, and Plummers Landing. From Robertson County: Blue Licks and Mount Olivet; and from Bracken County: Augusta, Stonewall, and Brooksville (I also have one designated as Mason County and one dealing with Bracken County, a political postcard). I also have several dealing with transportation on river and rail. Of more recent manufacture, I have medallions commemorating the sesquicentennial as well as the bicentennial celebrations of the City of Vanceburg, the bicentennial of the City of Augusta, the bicentennial of the Commonwealth of Kentucky, pottery commemorating the 150th Anniversary of St. Patrick's Catholic Church, and I have acquired most of the Maysville Christmas ornaments. I have prints of local interest from Steve White, Mitchell Tolle, Charles Campbell, Roy E. Boone, Dan Adams, Danny McCane,

Don Stanfield, Woodi Ishmael, and Dreama Craig, and I have a small piece of folk art that I believe is the work of Noah Kinney. I have a few pieces of marked cast iron, including a cast iron bell marked "Ball & Witchell, Waysville, KY" (should be "Ball & Mitchell, Maysville, KY", the "M"s being placed upside down, double errors. This bell originally hung at the Goddard, Fleming Co. school), a "Ball & Mitchell, Maysville, KY" horse-pulled plow, and two different "T. F. Norris, Vanceburg, KY" dehorner.



I have original advertisements for Esculapia Springs and Blue Licks Springs (from Blue Licks, I also have a bottle opener, an advertising banner, and another item that I do not know the purpose of), and a spoon (and a copy of an ad -- I have not located an original to date) from/marked Glen Springs. I have an order book and a book written by A. M. Lang of Covedale, KY featuring ducks/chickens/turkeys, and other fowl as well as registered hogs (Mr. Lang sold live fowl as well as fertilized fowl eggs and shipped them across the country). I have several original hand-written deeds and instruments from Lewis County, KY including the original hand-written deed for the "Historic" East Fork Church as well as McKinney's Chapel (I do not know where McKinney's Chapel was situated other than it was in Lewis Co., KY) and a third church that I do not know what it was eventually named or where it was located; four Lewis County, KY hand-written bill of sales/mortgages/agreements for care of slaves (rare as there were relatively few slaves in Lewis County, KY) from the 1830s; a hand-written agreement between a Tollesboro citizen and a "Free Girl of Color" for maid services from the 1866 (immediately after the Civil War); an 1885 document relative to the collection of tolls on the Vanceburg-Salt Lick-Tollesboro-Maysville Turnpike Road; a hand-written lease for a Lewis County sawmill, and other agreements signed by some of Lewis County's founders (the Bruce, Robb, Halbert and Pugh families, among others). I also have auction handbills/broadsides, political advertisements/broadsides, old phone books, etc. I have an Almanac from 1882 from R. L. Gillespie's store in "Tollesborough" (although I have seen this form of spelling in hand-written deeds, this is the only item I have PRINTED with this rather unusual spelling of Tolesboro/Tollsboro/Tollesboro), and a couple of additional almanacs from Maysville and Springdale in Mason County, KY. I have copies of business "directories" printed by papers in Mason and Lewis Counties, KY., and an original newspaper that included an article on the front page about a vigilante mob in Maysville that burned a prisoner at the stake (in 1899)! I also have a large collection of reference materials (books, articles) in printed form as well as some in digital format (I hope to have computers at the museum with which persons can view some of my digitized reference materials, photos of my tokens, and scans of my postcards as well as many that I have been able to save which I do not own that I obtained from other websites or from auctions where I was not the successful high bidder), and a copy of a book relative to Esculapia Springs that may be the sole copy outside of the original held by the University of Maryland/Baltimore collection (my copy is a copy of their book which is the only library that I have been able to locate which had a copy of the book. The curator made a copy for me, but did not copy it as an e-book or "pdf" format, but rather only sent me a paper copy he made directly from a color copier).



I have an extensive collection of private bank notes (pre-1860) from a number of banks that had branches in Maysville and Flemingsburg as well as pre-1930 National banknotes from Maysville. I have 9 old pocket watches from local jewelers including: John G. Fisher & Sons, Dan T. Fisher, and James Fisher (all of Flemingsburg) as well as Wm H. Cox, Blakeborough, and Ballenger (all of Maysville). I have straight razors from Owens & Barkley Hardware, O'Hare Hardware, Frank Owens Hardware, and Frank Owens & Son Hdwe., (all in Maysville) and I have a straight razor box marked Frank Owens as well as O'Hare Hardware, and a cardboard box marked Owens & Barkley pocket knives (I also have a safety razor marked "Lewis County Herald), and I own three Owens & Barkley, Maysville, KY pocketknives (these date to 1870 or so and are the only three I have ever found. This is significant as I have been an avid pocket knife collector for longer than I have been a collector of local memorabilia), and also have John Primble, Maysville, KY pocketknives from the 1990s, Bulldog knives etched "S & D Enterprises, Maysville, KY" from 1983, and I had some knives made in 2003 tang-stamped "C. A. Stanfield, Tollesboro, KY".

I have calendars, wooden nickels, thermometers, yard-sticks, three Lewis County, KY "store" plates (J. J. Jones, Epworth, KY; Chapman & Louder, Quincy, KY; and Barbour Bros., Burtonville, KY) and several "church" plates. I have a few yearbooks from various schools (I was able to obtain two copies of my father's --- Buford Lee Stanfield --- senior yearbook: He graduated at Orangeburg High School, class of 1957), and I acquired the rosters from all the teams involved in the 1929 regional basketball tournament held at Washington High School at an auction a few years ago. I have paper sacks from flour mills in Orangeburg, Maysville, Germantown, and Brooksville; I have items from the original chartering ceremony of the Tollesboro Lions Club; the original charter for the Tollesboro High School Future Farmers of America; and unissued stock certificates from three Sardis, KY corporations. I have metal tip trays from Brisbois Restaurant in Maysville and G. W. Stamper in Vanceburg, two different pressed metal ashtrays from Turner's Store in Orangeburg, Mason Co., KY, and a pressed/shaped metal match-holder from Collins & Williams Funeral and Ambulance Service of Mays Lick, Mason County, KY. I have three original 1912 copies of O. G. Ragan's "History of Lewis County, KY" (as well as three 1977 reprints) and a copy of the (reprint) 1876 Mason County, KY Atlas. I also purchased the "county-guns", one each from Bracken, Fleming, Lewis, Mason, and Robertson Counties, a Henry lever-action .22 rifle with engravings on the stock, receiver, and forearm of local nature (the court house of each county, as well as a covered bridge in addition to other items of importance to each county) limited to 50 pieces of each county (Bracken County is an edition of 25 instead of 50).

I have wooden crates (as well as paper labels) from Delicious Fruits Orchard of St. Paul, Lewis Co., KY, and canning labels from Ewing, Fleming Co., KY. I have my grandfather's (R. R. Stanfield, an auctioneer for approximately 70 years, of Orangeburg, Mason Co., KY) wooden fold-up sign that he placed on auction sites, as well as a metal sign that was placed at his home (R. R. Stanfield, Auctioneer). I also have three Maysville, KY cream cans, a Dover, KY cream can, and a Vanceburg, KY cream can; a metal sign of W. M. Kinder's "Registered Holsteins" dairy of Mays Lick; and a few Mason County, KY milk and water bottles.



I could go on and on but I think this listing includes the best examples of my collection of local memorabilia; however I have a huge "wish list" of additional items I would like to acquire. I have only a few examples of memorabilia from Robertson and Bracken Counties and there are lots and lots of items from Mason, Lewis and Fleming Counties that I am aware of that I would still like to acquire (in particular: A cast iron implement seat marked "MAYSVILLE", a "Bradford & Zweigart, Maysville, KY" brass combination padlock, a "Naughty Nellie" style corkscrew from Rogers Distillery, Maysville, KY; stock certificates from Toluoso Telephone Company and/or the Bank of Toluoso; a Firebrick, Lewis Co., KY token "Good for 5 bricks"; a "G. W. Stamper", Vanceburg, KY stone jug; some artworks by the Kinney Brothers of Toller Hollow, Lewis Co., KY; banknotes from Augusta, Brooksville, Flemingsburg, or Maysville, KY banks; straight razors from Maysville, KY from either Owens & Barkley, O'Hare Hardware or Frank Owens Hardware; pocket knives from Owens & Barkley, Maysville, KY; I would like to acquire Lewis Co., KY cream cans from small rural communities; a sharpening stone in small leather pouch marked "Maysville Stockyards, Maysville, KY"; bottles with good paper labels from distilleries in Maysville, KY; bottles from Blue Licks, KY; any tokens from the region that I still lack; and much more!), and therefore I am always on the lookout to find more (I have heard of the existence of a circa 1900 Vanceburg, KY Ohio Riverfront diorama of buildings and features made of tin that I would like to at least see). Thus if you have anything that you think I would be interested in, feel free to contact me. Craig A. Stanfield, info@stanfieldironery.com, 606-798-2005 or 606-301-3350.