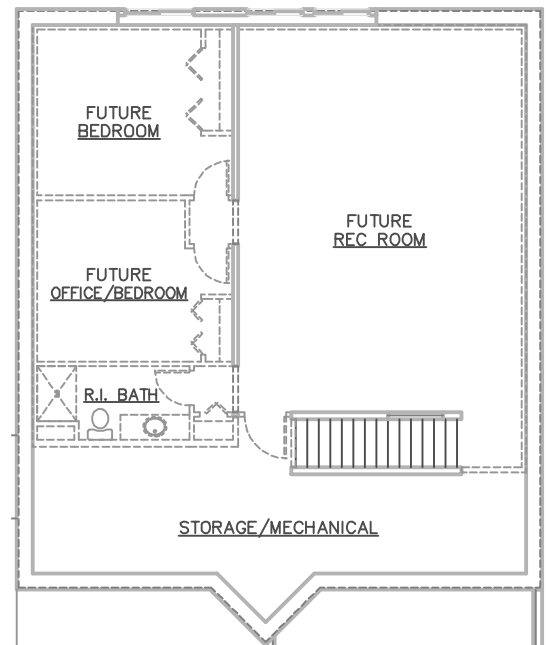
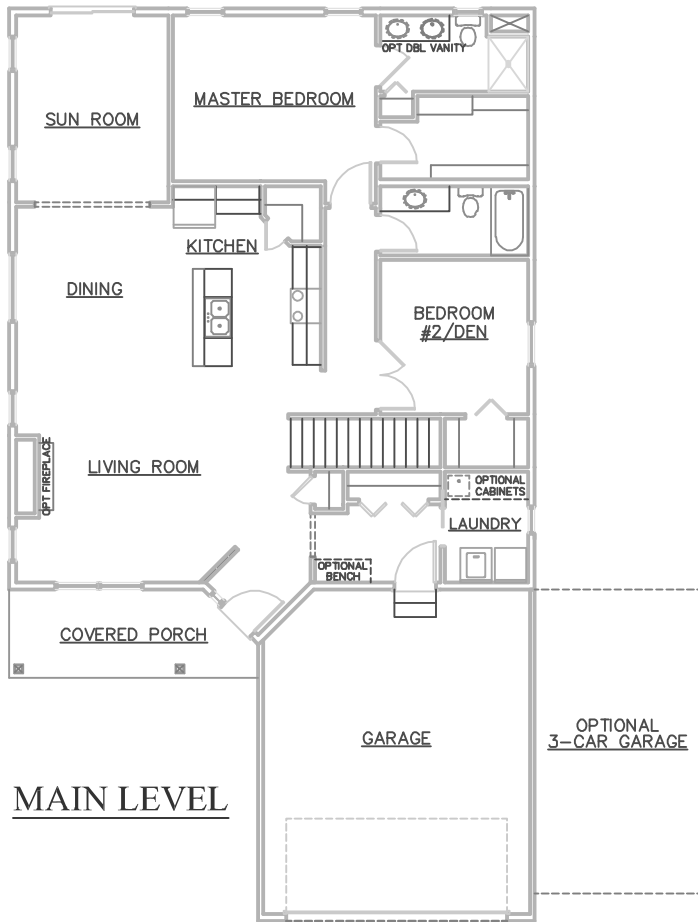


# WOODLAND



SOME OPTIONS MAY BE SHOWN



## ROOM SIZES

KITCHEN	9' X 13'
DINING	13' X 11'-6"
LIVING ROOM	16' X 15'-6"
MASTER BEDROOM	14'-8" X 12'
BEDROOM #2/DEN	10'-8" X 11'-4"
SUN ROOM	11'-4" X 14'
FUTURE REC ROOM	20'-5" X 27'-8"
FUTURE BEDROOM	12' X 12'
FUTURE OFFICE	12' X 11'-8"

- \* 2-4 BEDROOMS, 2-3 BATHROOMS
- \* 1,612 - 2,680 SQUARE FEET
- \* OPEN FLOOR PLAN
- \* LARGE KITCHEN PANTRY
- \* WALK-IN-CLOSET
- \* COVERED FRONT PORCH
- \* SUN ROOM



3475 Vermillion Street, Suite 101 ~ Hastings, MN 55033 ~ 651.437.3700 ~ [www.gregjhomes.com](http://www.gregjhomes.com)

Plans and specifications are subject to change without notice. Copyright Greg J Homes of Hastings Inc. 2023