



Lighthouse Quilters Guild

The Presidents' Pieces

The month of November brings us many reasons to reflect on our blessings. I include family and friends in those blessings. But I also include talents. We all use our talents to uplift others. We had a wonderful year of programs and workshops presented by Jayne Steffens and Pat Henningfeld. We had the blessings of the talents on our board. We were blessed by the talents of our members. Thank you to all of you.



As you reflect on your blessings of talents, won't you please consider or reconsider sharing your talents on our board? We still need a VP of Planning and a Historian. Call me for more information. Ask a friend to consider sharing the position.

Our Christmas committee is hard at work sharing their talents. Can't wait to see what awaits us on the 28th. See you at Roma!
Kirsten

November, 2016, another year closing and leaving us with memories! How many goals were accomplished and how many derailed? I experienced a year of highs & lows and cherished experiences I never thought possible. I look forward to 2017 while clinging to the end of this year. Our holiday party is coming up and I challenge all to introduce yourself to someone you don't know. You just can't have too many friends or too much fabric! Thanks to all of you for being apart of our guild and making it what it is! 2017 looks to be amazing and I look forward to all of you being a part of it

Jayne

October 2016

Inside This Issue

Board Members 2016 & 2017 Programs Info Facebook Treasured Quilts of WI	2
Meals on Wheels Holiday Party Information Board Position Openings	3
LHQG Charity Quilts Quilt Studio Rainbow Quilters Show Boutique News	4
October Meeting Minutes In Sympathy 2016 Quilting Events Library News	5
Holiday Quilt Raffle Information Membership Information	6
2017 Membership Form	7
Hospitality Committees	8

NOVEMBER AND DECEMBER BIRTHDAYS

Judy Stapleman-Kroes 11/1

Autumn Lattimore 11/2

Rita Adamczyk 11/4

Sharon Molina 1/4

Debbie Blaustine 11/5

Chris Tomayko 11/8

Judy Olson 11/13

Ginger Wanserski
11/20

Kay Rigert 11/26

Barb Plowman 11/28

Joyce Herringer 12/3

Caroline Kuehneman 12/7

Cindy Garcia 12/9

Linda Michel 12/11

Debby Gillmore 12/16

Judy Martin 12/18

Deb De Pelecyn 12/21

Jane Kotowski 12/27



Next Meeting Mon. Nov. 28, 2016

Holiday Party at Roma Lodge

Doors open 6:00

Dinner Served 6:45

Articles for the Newsletter

The deadline for submitting articles is
on or before the 8th of each month.

Submit your articles to:

Sharon Matusevicius at
matusevicius.1@att.net

Rachel Riley at
rsriley77@gmail.com

2016 LHQ Board
NQA Chapter WI 727

President

Jayne Armbruster
Kirsten Weiss

Vice President of Programs

Jayne Steffens
Pat Henningfeld

Vice President of Planning

Judy Martin

Secretary

Marge Martin

Treasurer

Ginger Wanserski

Hospitality

Jeanne Steidtman

Membership

Cindy Garcia
Mindy Baumgartner

Librarian

Monica Bissen

Historian

Joan Kraus

Publicity

Pat Henningfeld

Social Media

Autumn Latimore

Newsletter/

Website Coordinators

Sharon Matusevicius
matusevicius.1@att.net

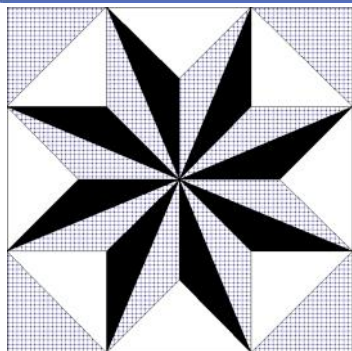
Rachel Riley
rsriley77@gmail.com

Webmaster

Cheryl Buenger
cbuenger61@gmail.com

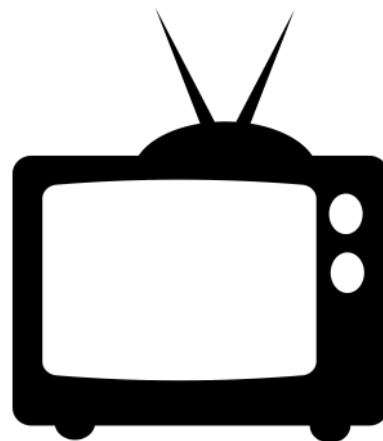
2016 Programs

Nov 28	Guild Holiday Party
2017 Programs	
Jan 30	MEMBER PRESENTATION: Then and Now
Feb 27	CHERYL SCHENCK: Bindings, Labels and Sleeves, Oh My! www.unspooledwi.com
Mar 27	JUDY LEVINE: Silks, Satins and Other Fun Stuff (workshop) www.judylevine.com
Mar 28	JUDY LEVINE: Workshop: Couched Applique
Apr 24	JIM DEIBLER: The Lighter Side of Machine Maintenance www.sewnsaveofracine.com
May 22	SUZI PARRON: Barn Quilts www.barnquiltinfo.com
June 26	BILL KERR: Transforming Traditions: Modernism and Quilts www.ModernQuiltStudio.com WORKSHOPS: Quilting the Modern Quilt Piecing Curves
July 31	PICNIC
Aug 28	DONNA WISNOSKI: Feedsack Quilts
Sept 25	KATHLEEN TRACY: A Little History of Quilting www.countrylanequilts.com www.sentimentalquilter.com
Sept. 26	KATHLEEN TRACY: Workshop: TBA
Oct 30	CAROL BUTZKE: Care and Feeding of Quilts
Nov 27	Holiday Party



Treasured Quilts of Wisconsin

Nancy Zieman hosts "Treasured Quilts of Wisconsin" on PBS television at 7 p.m., Nov. 29 and 10:30 a.m., Dec. 2. The special features interviews, stories and quilts from some of Wisconsin's top quilters. A preview is available on You Tube. Both Betty Suiter and Cindy Garcia from our guild will be featured along with many other prominent quilters.



Holiday Party Registration Deadline is near! **FRIDAY NOV. 18th**

Event date: Monday November 28, 2016
Where: Roma Lodge, Spring Street, Mt. Pleasant
Time: Doors open at 6:00pm
Cash bar opens at 6:00pm
Dinner served at 6:45pm

Entertainment, Door Prizes, Raffle, Great Food, Awards and Surprises await.

Cost: \$23.00 per active member
(You must be a member to attend)
Raffle tickets are available for the event quilt
Register by Mail: **PREFERRED.** Send check for \$23.00 payable to Lighthouse
Quilters Guild to: Jean Steidtmann, 5714 3 Mile Rd,
Racine, WI 53406
Pay at the door: If you cannot rely on the postal system, you can
Call or Text me: (262) 497-3320.

Questions or Concerns: Call Jean at the same number.

BRING your calendars as there will be Sign-up sheets for 2017 Hospitality Committees. Members are required to sign up to bring a snack to one of our monthly meetings. Sign up early and get the month you prefer.

MEALS ON WHEELS SENIOR NUTRITION PROGRAM NEEDS YOU!

This very beneficial program is in immediate need of Volunteer Drivers. Volunteer Drivers usually drive one day a week (M-F) with a time commitment of about 1-1.5 hours. Some volunteers are "on call" drivers and pick and choose from routes that need drivers. Schedules are flexible. Teams of drivers are welcome to "adopt" a route on a specific day. Meal pickup is between 10am and 11:30am at 2200 DeKoven Ave. Mileage stipends are available.

If you want to know more about this excellent volunteer opportunity, please call Ruth Stauersbol, Volunteer Coordinator at [262-898-1370](tel:262-898-1370) or email her at ruth.stauersbol@racinecounty.com If you have some basic questions, you can also contact guild member, TC Wiley at [262-930-8600](tel:262-930-8600) or tcwiley@sbcglobal.net



Do you enjoy the programs that are presented at each meeting?
Do you enjoy meeting people that you may not otherwise talk to at the meetings?
Do you want to help the board fill the vacancies we are experiencing?

WE NEED YOU

In fall we talk of leaves. In that vein, consider turning over a new leaf and join the board. Mary Wolter has agreed to be Treasurer and Diana Zimmerman has agreed to be the Hospitality chairperson. We need a Vice President of Planning and a Historian. You can share the position of your choice with a friend and share the responsibilities. These are not the most taxing positions on the board, but both are very important. Our bylaws require us to present and vote on the slate at the October meeting, and install these board members at the November meeting. The outgoing board members and the current board members are more than willing to assist anyone who volunteers. Every one of us is busy with life! Be it work, family, fear... please consider partnering with an old friend or getting to know some new ones. We are fortunate to have an amazing group, but our guild needs support from every member!!

LIGHTHOUSE CHARITY QUILT PROJECTS FOR 2016

SIX QUILTS were given at our October meeting. Here is where they will go:

2 to Milwaukee Children's Hospital and 4 wherever needed. THANK YOU!

Two members will distribute quilts this year:

Nancy Larsen Women's Resource Center

Barbara Vallone for Quilts for the Community which includes:

All Saints NICU, Racine, and Children's Hospital, Milwaukee

St. Monica's Home plus other Racine assisted living and nursing homes

Operation Snuggles - quilts for soldiers' children and Wounded Warriors

Racine/Kenosha Hospice Alliance

PLEASE CONSIDER MAKING YOUR QUILTS NO BIGGER THAN 60 x 70~

SMALL TWIN SIZE BECAUSE THIS IS THE SIZE MOST NEEDED RIGHT NOW!!!

Please visit our Charity Quilt display which has:

A slip of paper for you to say WHERE your quilt goes and if it's WASHED or not

A place to leave your quilt (two wash baskets!) before OR after Show & Tell

Quilt size can range from 36" x 36" to twin bed; square or rectangular. Women's Resource Center welcome pieced, cheaters, fleece, crocheted and knitted items.

THANK YOU for continuing to make this project such a success. *Nancy Larsen & Barbara Vallone*

QUILT STUDIO TIME DATES FOR 2017

We will hold our 2017 Quilt Studio Times at Resurrection on Fridays and Saturdays, January 6 & 7, March 31 & April 1, August 11 & 12, and November 3 & 4. You can come as early as 9 am on Friday. This means you will attend the First Friday Quilters meeting until 3 pm which will cost you \$1 plus a simple finger snack to share and your own lunch. As of 3 pm you will pay \$5 to stay until 9 pm. Go home to sleep and come back at 9 am on Saturday to quilt until 9 pm for another \$5! You will provide your own meals and bring all the stuff you need to work on projects. Please do NOT bring your big irons. We have them at church. Contact Barbara Vallone, 262-639-8185, qltingb@gmail.com

RAINBOW QUILTERS *BHL* QUILT SHOW on OCTOBER 14 & 15, 2016

Thank you to everyone who came, voted for Viewers Choice, and bid on a Crayon Challenge Quilt! Rainbow donated \$200 from the quilt show proceeds to the new chairs we are now using! Viewers Choice winners were: Bed Quilt, Patricia Young; Wall Quilt, Monica Bissen; Other Quilted Item, Linda Anderson; Rainbow Challenge Row Quilt, Judy Olmstead. The Crayon Challenge Quilts raised over \$1,100 for Patient & Family Support Programs at All Saints expanded Cancer Center.

Quilting News around Wisconsin

A quilting group from Menomonie that met in the Plymouth Congregational United Church of Christ lost 14 quilts, a 60 yard roll of batting and fabrics in a fire in September. For the full story visit:

<http://www.leadertelegram.com/News/Front-Page/2016/11/05/Rising-from-the-ashes-1.html>



A few gift ideas for this holiday season—and the boutique. Remember, one for your family and friends and one for the boutique!

Tablet stand: <http://www.nancyzieman.com/blog/sewing-2/iphone-android-tablet-fabric-holder/>

Fabric Ornaments: <http://katrinastutorials.blogspot.com/2009/09/fabric-ornament-number-one.html>

Pot Holders with Recipes: <http://www.mysocalledcraftylife.com/2012/11/30/12-days-of-handmade-gifts-diy-recipe-potholders/>

Ribbon Bookmarks: <http://crafty.house/ribbon-bookmarks/>

Lighthouse Quilt Guild General Meeting Minutes

Oct 31, 2016 7 PM

President Kirsten Weiss called the meeting to order.

Announcements: The meeting started out with a piano piece by Kitty Friend.

Guests were introduced. There are cards to sign on the side table for Cindy Garcia.

Items donated by the family of former member Irene Lewis are on the tables by the window. Please take whatever you can use or can share with others and enjoy!

Program: Jayne Steffens introduced the 4 presenters of our schoolhouse meeting.

The first presenter was Stevie Breit and Regina Scott Brooks. Their handout was on Internet resources for quilters. Stevie talked about websites and Regina talked about blogs. Second was Sandy Kruppstadt who showed us how to make a hexagon using a circle. The instructions can be found in the book Quick and Easy Hexie quilts by Dr Peggy Rose and Julie C Wood. Third was Rachel Riley who showed us some pincushions to make for the boutique along with a handout about pincushions. She also asked the members for bags to be used for purchases during the show. These should not be plastic grocery bags but bags with handles. Our fourth presenter was Luwayne Snow who talked about Modern Hexagons using a handout. She showed her quilt top Millifiore from a

quilt-a-long by Katja Marek using Katja's book the New Hexagon. Check out the paperpieces website for more information. <https://www.paperpieces.com>

Business: Pat Limburg talked about the 2017 quilt show. There will be a special ribbon awarded in 2017 to honor Cindy Garcia. The honored quilter will be Cecelia Johnson.

Regina Scott Brooks will be stepping in to finish the term of Cindy Garcia & Mindy Baumgartner, membership. A vote was held for new board members Mary Wolter, Treasurer and Dianna Zimmerman, Hospitality. They were voted in. We still need someone to step forward and volunteer for VP planning and Historian.

This is the last month to order nametags. The members only Christmas quilt is on display and tickets may be purchased. The treasurer handed out the latest budget.

Hospitality introduced the 3 chairpeople for the Christmas party Lisa Williams, Sherry Thompson, and Sharry Maxey. The winner of the Margaret Lizdas award at the Racine County Fair Sherry Gruhn brought her quilt.

Door Prizes: were awarded for Oct birthdays and attendees.

Show and Tell: There were many wonderful quilts shown. It was announced that former member Linda Honsberger was in a car accident a few weeks ago. Some may want to send her a card.

Jayne Steffens has a quilt in a book by Quilt historian Sue Reich.

The next board meeting is Nov 7th.

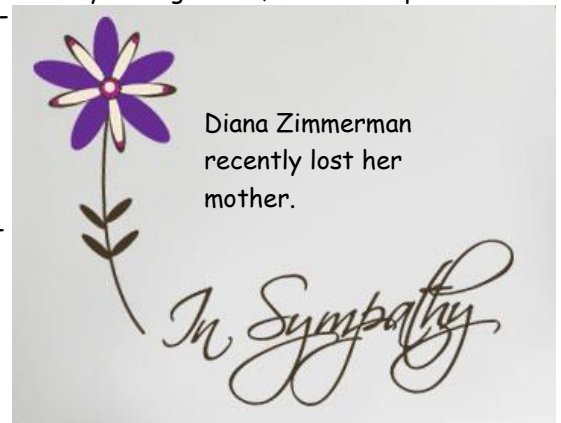
The meeting was adjourned at 8:53 PM.

Refreshments were then served.

Respectfully submitted

Marge Martin

Secretary

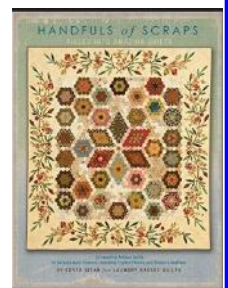


NEW BOOK IN THE LIBRARY

Handfuls of Scraps: Pieced
into Amazing Quilts

by Edyta Sitar

has been added to our library
in memory of Irene Lewis



2016 Quilting Events

Nov. 13. Land in Textiles: Map Quilts by Leah Evans. UW-Milwaukee American Geological Library, 3rd floor of Golda Meir Library, 2311 E. Hartford Ave. 1:30 p.m. reception; 2 p.m. lecture. Free.

Dec. 2. A Dickens of a Christmas Quilt Show. Horicon Bank, 400 Watson St., Ripon. 9 a.m. -9 p.m. Freewill offering.

Holiday Raffle Quilt



We have seen this beautiful quilt in all of its glory at the September meeting. Each of us hopes to dream of sugar plums under it at Christmas!

One lucky quilter will win it at the Holiday Party on November 27.

You only need one ticket to win, but with all of the competition, who is going to stop at one ticket?

Tickets are on sale at the October meeting and again at the Holiday party. The raffle is open to members who are current in their dues.

Purchase Price is \$2.00 each or 3 for \$5.00.

Good luck to all who support this fund raising effort.

Holiday Quilt Raffle Ticket Name: _____ Phone Number: _____	Holiday Quilt Raffle Ticket Name: _____ Phone Number: _____	Holiday Quilt Raffle Ticket Name: _____ Phone Number: _____
Holiday Quilt Raffle Ticket Name: _____ Phone Number: _____	Holiday Quilt Raffle Ticket Name: _____ Phone Number: _____	Holiday Quilt Raffle Ticket Name: _____ Phone Number: _____
Holiday Quilt Raffle Ticket Name: _____ Phone Number: _____	Holiday Quilt Raffle Ticket Name: _____ Phone Number: _____	Holiday Quilt Raffle Ticket Name: _____ Phone Number: _____

Hello everyone! I am excited to serve the guild as the VP of Membership once again and look forward to having a fun and exciting year. Dues for 2017 can now be submitted and can be forwarded to me through the mail to the guild's PO Box or to my home address which is in the member directory. You may also bring your dues to our holiday party this month. If possible, I would love to have your dues before our January guild meeting but I will of course accept them then. It is my goal to have a preliminary directory printed out at February meeting for members to sign off on their information and for the 2017 directory to be distributed in March.

At the Board meeting this month we discussed ways to engage new members and current members so my gears have been churning (and most of you know that is a dangerous thing!) During door prizes expect a little extra fun!

As always if you have any questions about guild membership please contact me, my information is in the member directory.

Happy Holidays Ladies! - Regina

LIGHTHOUSE QUILTERS GUILD

2017 Membership Form

Please complete this form and return it with \$30.00 (checks made payable to Lighthouse Quilters Guild).

You may sign up at the **January** meeting or mail your membership form and payment by **1/31/17** to: Lighthouse Quilters Guild, P. O. Box 081153, Racine, WI 53408-1153

If you prefer your membership card mailed to you, please include a self-addressed stamped envelope with your form. If you are mailing your form, DO NOT SEND CASH!

Please note: All members are required to serve at least one month per year on the hospitality committee and are asked to make one quilt a year for our charities.

PLEASE PRINT AND FILL OUT FORM COMPLETELY

Name: _____

Address: _____ City: _____

State: _____ Zip code: _____

Winter Address: _____

Home Phone: _____ Work Phone: _____ Cell: _____

Email Address: _____ Birthday: _____ Month/Day: _____

How many years have you been a member of LHQG: _____ (Please estimate if you can't remember exactly.)

Newsletter via (circle one) email or need it printed and delivered

____ I would like to have a quilting mentor

____ I would be willing to be a quilting mentor

____ I would like to see a program or class on _____

____ I am interested in a lecture by the following teacher/s _____

____ I would like to print and mail or deliver a newsletter for another member



Lighthouse Quilters Guild
P. O. Box 081153
Racine, WI 53408-1153
www.lighthousequiltersguild.com



Newsletter Editors / Website Coordinators

Sharon Matusevicius, matusevicius.1@att.net Rachel Riley, rsriley77@gmail.com

November Hospitality

Chairperson: Lisa Williams/Sherry Thompson

Mary Bielefeldt	Lisa Williams
Sherry Thompson	Sharry Maxey
Pat Henningfeld	Barbara Vallone
LuWayne Snow	Jeanne Steidtman



You know you're a quilter when your ironing board is always set up,
but you never iron clothes.