

GREEN SHED

Pandora Park Community Garden Competition

VIEW OF SHED ENTRY



S. PERSPECTIVE



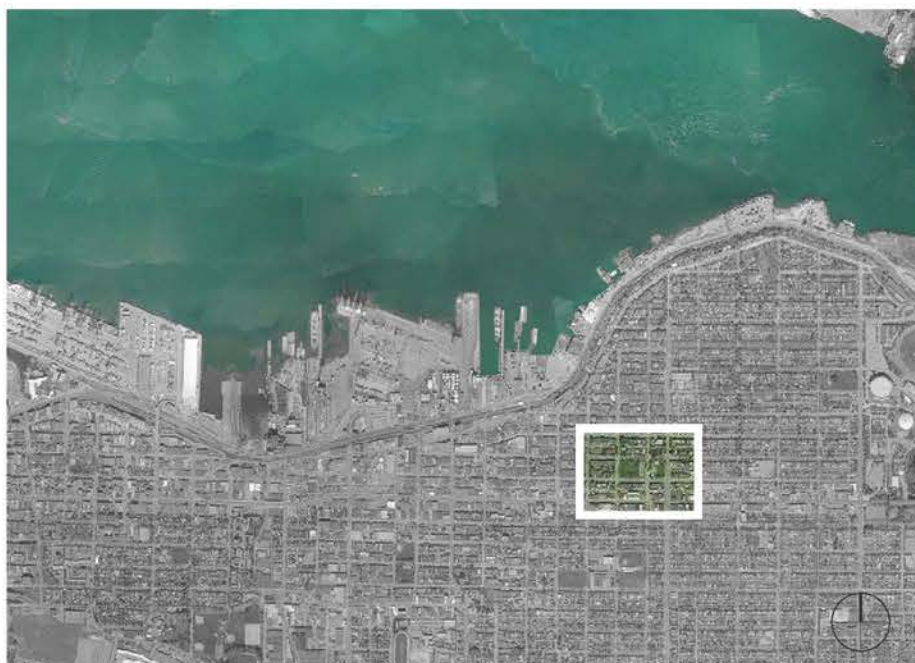
S.E. PERSPECTIVE

Sponsored by:

SAB & Mag
Sustainable Architecture & Building

What if the conditions that are typically thought to restrict practice are conceptually transformed to become the generator for architectural expression? The existing site prescribes a clear and delineated path through the garden. This became our starting point and catalyst for design intervention. The path becomes the organizing parti dividing the functional components of the program based on (6) 4'x 4' mod-

Rammed Earth Architecture in Vancouver B.C.



ules into two distinct spaces; an accessible storage area and a work space. The design includes cold frames along an accessible path, seating areas, planting and garden beds and a water feature that utilizes reclaimed water.

We let strategies of sustainability and natural methods of construction charge the project by using rammed earth construction incorporating indigenous soils with the addition of crushed red clay bricks. Composite lumber utilizing "off-cut" dimensions. The ground plane consists of asphalt paving which includes recycled tire material and broken ceramic tile giving it a shimmering quality.

Community involvement is encouraged by the manageable size of materials, the construction methodology and "off the shelf" components allowing for a "barn raising" which fosters fellowship and a sense of ownership. The design aesthetic attempts to reinterpret the green shed typology in a modern and contemporary way.

site location_narrative_views



RENDERED SITE PLAN



S.W. PERSPECTIVE



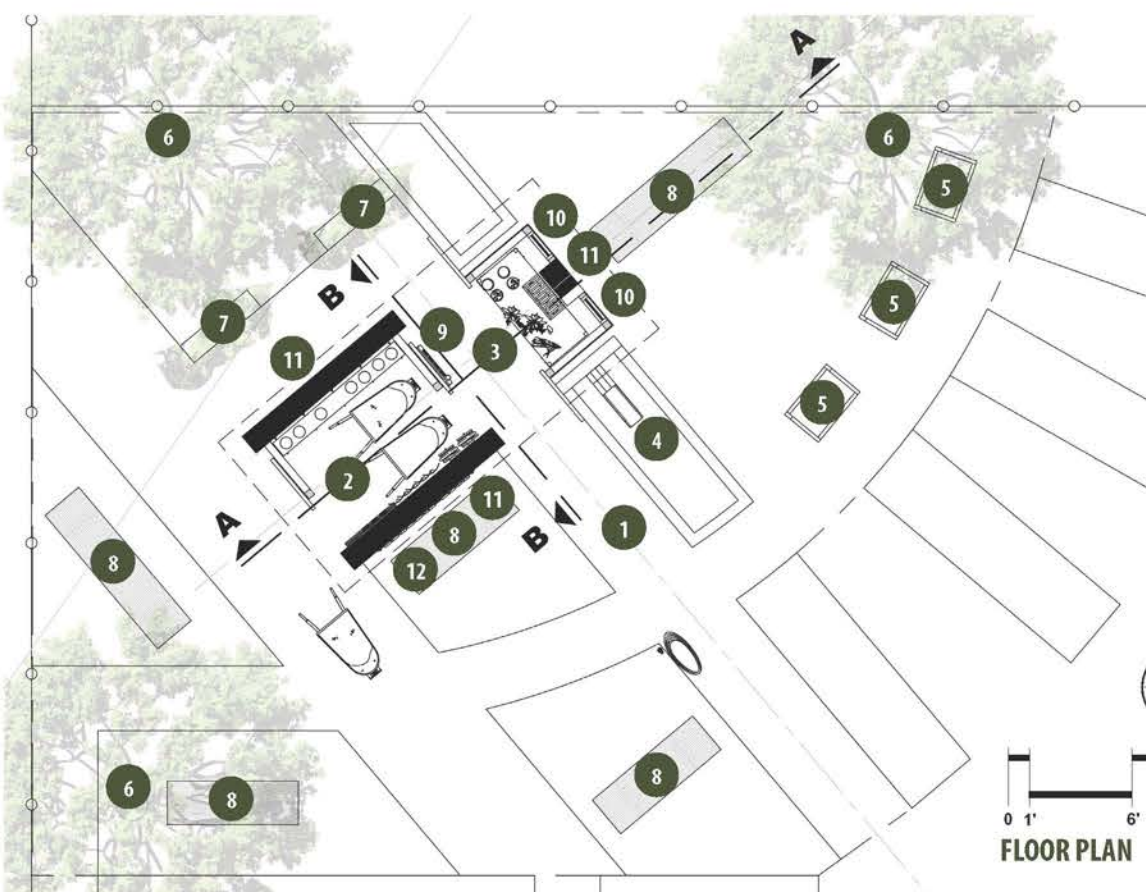
VIEW OF STORAGE INTERIOR



SECTION A



SECTION B

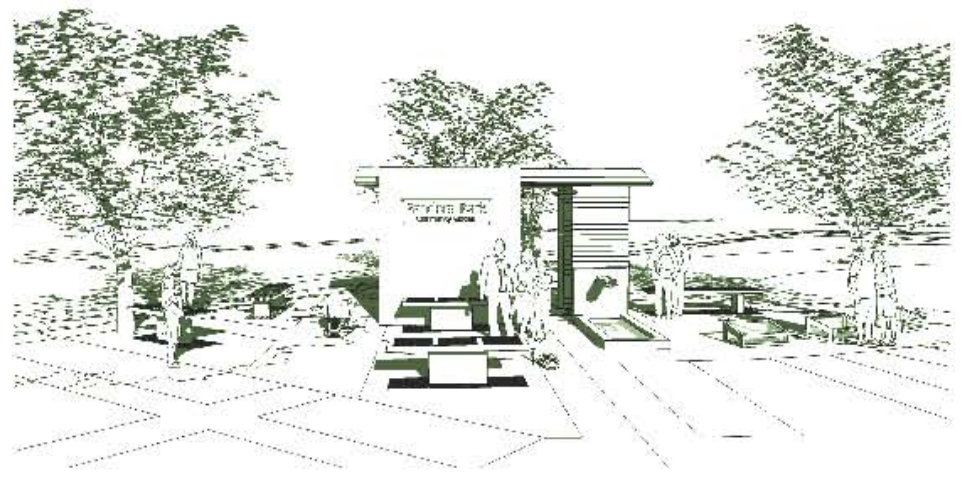


FLOOR PLAN

LEGEND

- 1 - MAIN ENTRY POINT
- 2 - STORAGE AREA (64 SQ.FT.)
 - (2) WHEELBARROWS
 - (5) SHOVELS
 - (5) RAKES
 - (4) GARDEN HOSES
 - (3) SHELVES FOR STORAGE
- 3 - WORK BENCH AREA (32 SQ.FT.)
 - (1) DRYING RACK
 - (3) ADDITIONAL SHELVES
 - (1) WATER VALVE
- 4 - WATER FEATURE
- 5 - ACCESSIBLE COLD FRAMES (QTY. 3)
- 6 - FRUIT TREE (QTY. 3)
- 7 - ESPALIER FIG & PEAR TREE (QTY. 2)
- 8 - SEATING AREA (QTY. 5)
- 9 - DISPLAY AREA / BULLITIN BOARD
- 10 - WINDOWS (QTY. 2)
- 11 - RAMMED EARTH WALL (10'-0" HIGH)
- 12 - COMMUNITY PARK SIGNAGE





NORTH ELEVATION



SOUTH ELEVATION



EAST ELEVATION



WEST ELEVATION



AXONOMETRIC VIEW



VIEW OF WORK TABLE BELOW