

Dual Bracket

Qmotion®

advanced shading systems

QADVANCED DUAL BRACKETS INSTALLATION INSTRUCTIONS

IMPORTANT

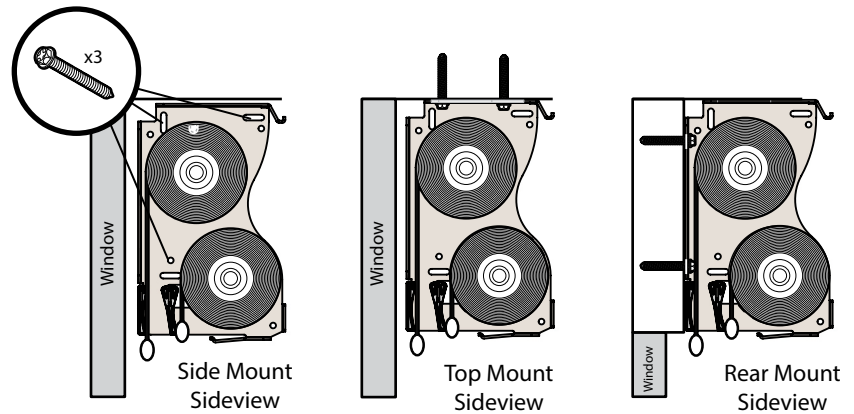
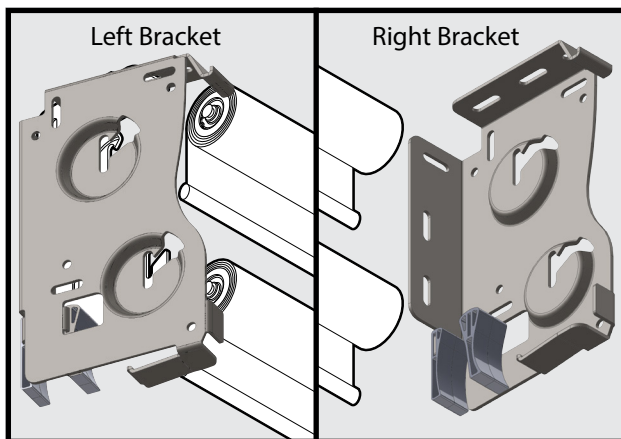
Read and understand all instructions before installing. Always wear personal protection equipment including safety glasses and gloves. Use a ladder per its manufacturer's instructions. Work safely!

Tools Required

Measuring Tape	#2 Phillips Screw Driver
Pencil with eraser	Power Drill with:
Calculator	3/32" Drill Bit
Level	#2 Phillips Drive Bit
Ladder	Stud Finder (Optional)
Flat Head Screw Driver	

PARTS

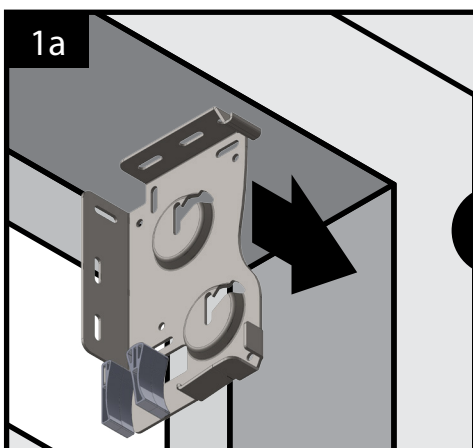
Ensure that all parts are present.



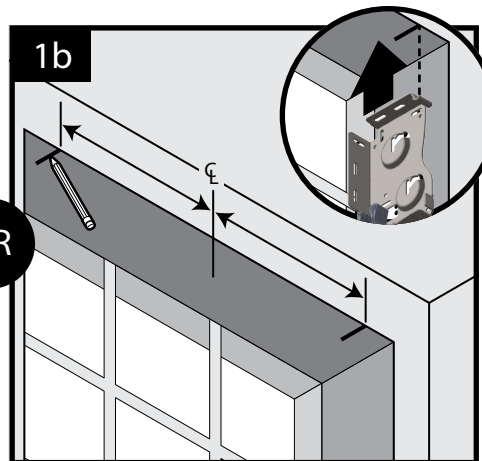
NOTE: Verify shade travel path is clear of all obstructions.

NOTE: Before you begin, dry fit shade to verify it will fit. Adjust depth to establish proper clearance for shade in full open position and so that full up position is not in front of opening.

- If shade was ordered to same size as opening, place bracket in corner of window jamb.
- If shade was ordered to a smaller size than opening, center shade in window opening.



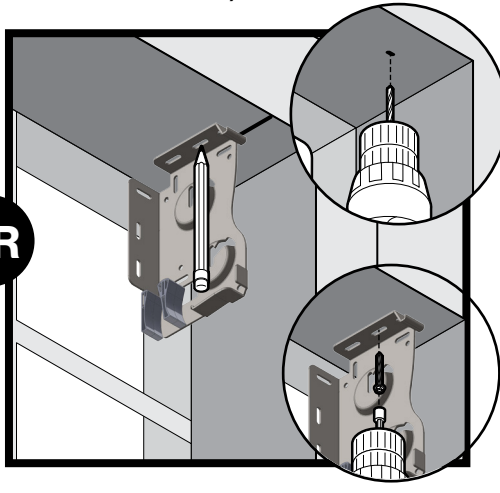
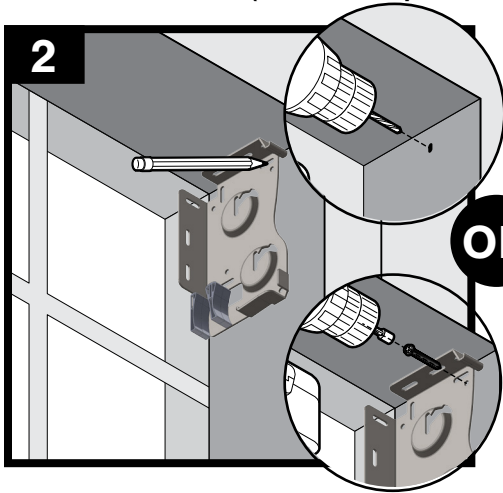
OR



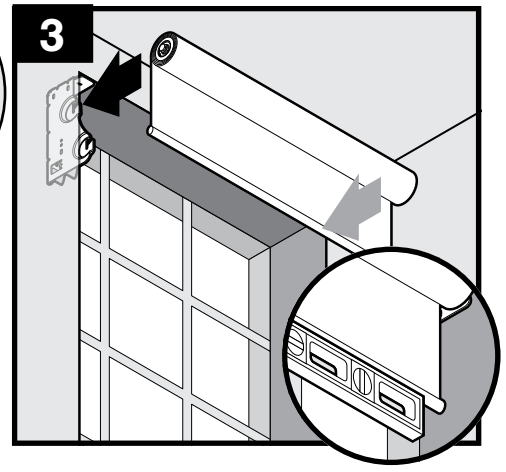
Place brackets in top corner of window opening.

Find and mark center of opening. Mark top of window jamb on each side of window 1/2 the bracket-to-bracket dimension for the shade. Align outside edge of bracket with mark.

Inside Mount (Side, Top, and Rear Mount) – Cont'd



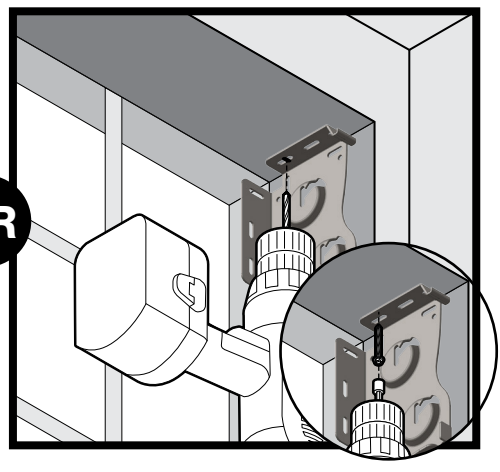
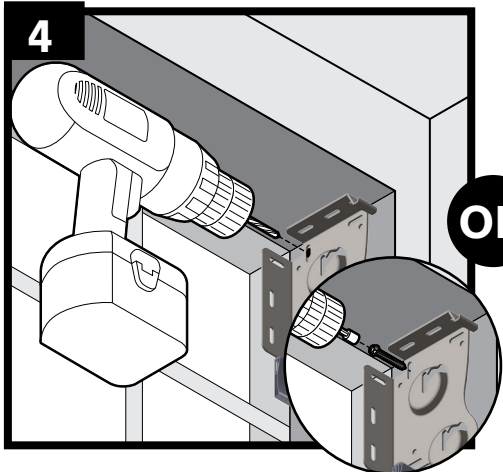
OR



SIDE MOUNT: Mark bottom of slotted hole on side of bracket. Drill 3/32" pilot hole on mark. If necessary, use wall anchor (not included). Secure brackets with one screw using a 1/4" driver.

TOP MOUNT: Mark center of slotted front hole on top of bracket. Drill 3/32" pilot hole on mark. If necessary, use wall anchor (not included). Secure brackets with one screw using a 1/4" driver.

Dry fit top shade and check vertical side gaps and if shade is level. Adjust brackets if necessary by loosening screw and moving bracket down in slot. Once level, remove shade and tighten screw.

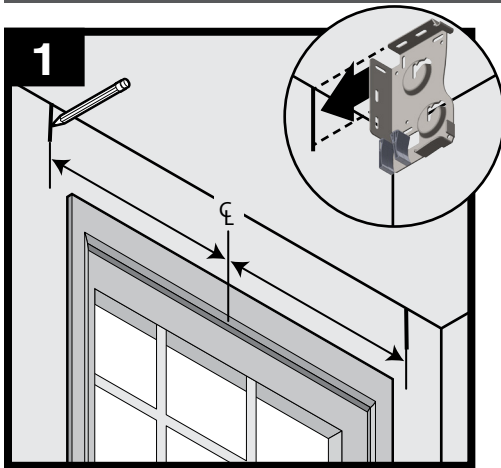


OR

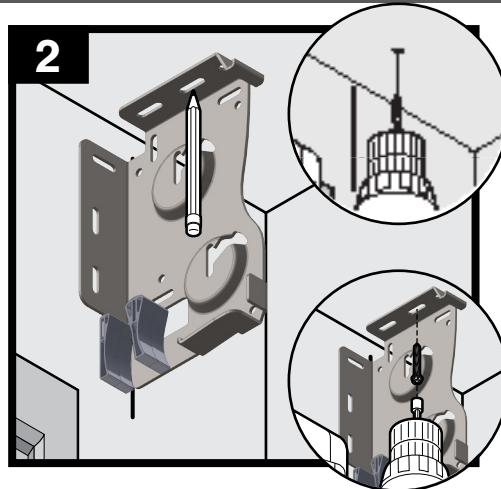
SIDE MOUNT: Drill second 3/32" pilot hole. If necessary, use wall anchor (not included). Secure brackets with second screw using a 1/4" driver.

TOP MOUNT: Drill second 3/32" pilot hole. If necessary, use wall anchor (not included). Secure brackets with second screw using a 1/4" driver.

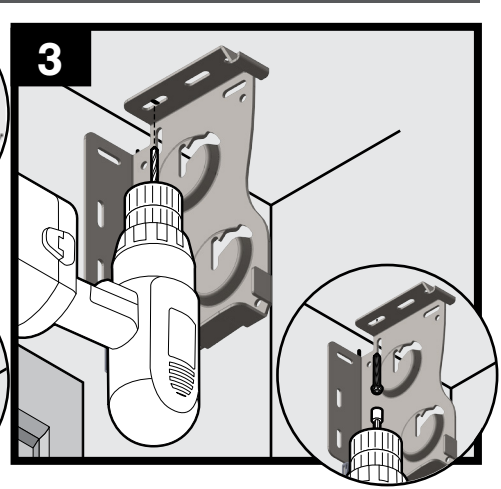
Outside Mount (Top Mount)



Mark center of opening. Make marks on wall on each side of window 1/2 the bracket-to-bracket dimension for the shade. Align outside edge of bracket with mark.

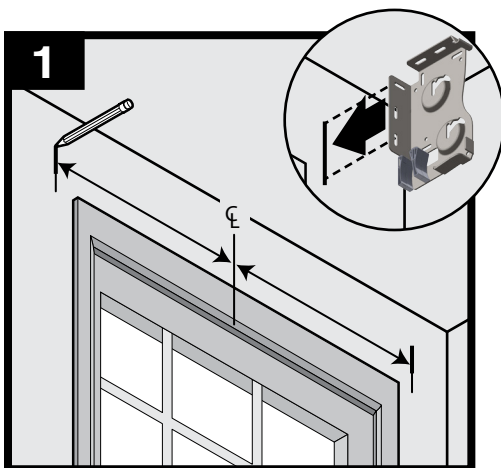


Mark center of slotted front hole on top of bracket. Drill 3/32" pilot hole on mark. If necessary, use wall anchor (not included). Secure brackets with one screw using a 1/4" driver.

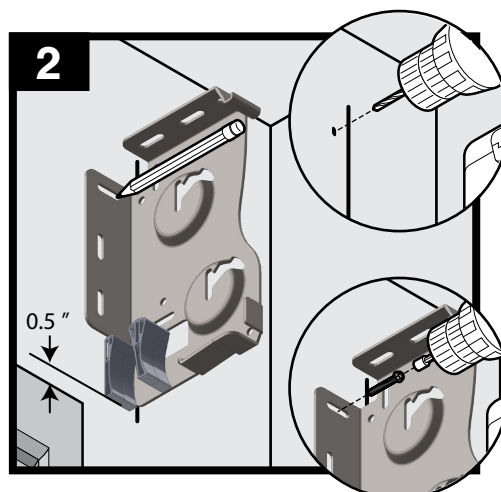


Dry fit top shade and check vertical side gaps and if shade is level (see Step 3 on page 2). Drill second 3/32" pilot hole. If necessary, use wall anchor (not included). Secure brackets with screw using a 1/4" driver.

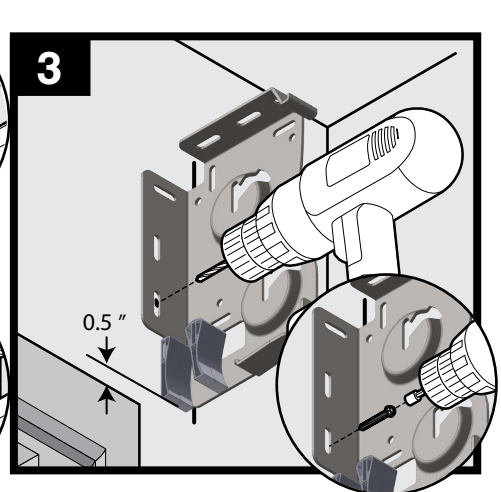
Outside Mount (Rear Mount)



Mark center of opening. Make marks on wall on each side of window 1/2 the bracket-to-bracket dimension for the shade. Align outside edge of bracket with mark.



Mark bottom of slotted top hole on top of bracket. Drill 3/32" pilot hole on mark. If necessary, use wall anchor (not included). Secure brackets with one screw using a 1/4" driver.



Dry fit top shade and check vertical side gaps and if shade is level (see Step 3 on page 2). Drill second 3/32" pilot hole. If necessary, use wall anchor (not included). Secure brackets with screw using a 1/4" driver.

QMotion Customer Support
www.QMotionsShades.com
qmotioninfo@homerunholdings.com
Toll Free 1-877-849-6070

3400 Copter Road • Pensacola, FL 32514