

RAJ-7K-H & RAJ-7K-L

Four Post Commercial, Rolling Bridge Jacks

7,000 lbs. Capacity

The iDEAL RAJ-7K-H & RAJ-7K-L Rolling Bridge Jacks are high quality, automotive frame engaging 7,000 lb. capacity, pneumatic / hydraulic operated, scissor-style rolling bridge jacks, designed to be easily mounted on most four post or scissor lift's jack rails to expand the lift's service ability. Both jack models are designed to lift either the front or rear wheels off the runways to provide 'wheels free' service for brake, suspension, tire repairs or general maintenance jobs. The iDEAL RAJ-7K Jack models include 'exclusive' universal roller body brackets designed for either 'High Mount' or 'Low Mount' jack rail configurations for commercial four post or scissor lifts with integrated jack rails between the runways. The iDEAL RAJ-7K's exclusive design incorporates 'spring loaded' adjustable width & height roller body support brackets, allowing for the best fit to runways, while the dual-precision roller bearing guide wheels 'track' on the top edge & side of the jack rails, ensuring for smooth & safe long-term rolling operation. The RAJ-7K Jacks also come standard with a pair of rubber pad adaptors, protective scissor side skirts & high-quality pneumatic / hydraulic pump for premium, commercial grade rolling bridge jacks, all for an unmatched value!

Features

- 7,000 LBS. CAPACITY
- HIGH QUALITY, COMMERCIAL GRADE
- (HIGH MOUNT) 'H' MODEL FOR 'LOW' RUNWAY JACK RAILS
- (LOW MOUNT) 'L' MODEL FOR 'HIGH' RUNWAY JACK RAILS
- EXCLUSIVE ADJUSTABLE HEIGHT ROLLER BODY ASSEMBLIES
- TRACKS ON 'TOP EDGE' OF JACK RAILS FOR LONG-TERM ROLLING
- 'SPRING LOADED' ROLLER BODY ACTION WHEN NOT UNDER LOAD
- DUAL-PRECISION ROLLER BEARING GUIDE WHEELS
- ADJUSTABLE WIDTH, LOCKING SUPPORT ARMS
- PNEUMATIC / HYDRAULIC OPERATION
- PROTECTIVE SCISSOR SKIRTS
- TWO LOCKING HEIGHT POSITIONS
- RUBBER PAD ADAPTERS (SET OF 2EA)
- DURABLE POWDER-COAT PAINT FINISH



RAJ-7K-H 'High Mount' Model



RAJ-7K-L 'Low Mount' Model

Specifications

| Models | RAJ-7K (H & L) |
|-----------------------------------|--------------------|
| Capacity | 7,000 lbs. |
| Support Arms - Min / Max | 37-3/4" – 49-1/4" |
| Lifting Arms - Min / Max | 29-1/8" - 51" |
| Lifting Height - Min / Max | 8-11/16" – 18-7/8" |
| Rubber Adaptor Height | 3-1/8" |
| Locking Positions | 2ea |
| (High Mount) Roller Body Adj. Ht. | 3" |
| (Low Mount) Roller Body Adj. Ht. | 2" |
| Air Power Requirement | 125 PSI / 20 CFM |
| Ship Weight | 330 lbs. |

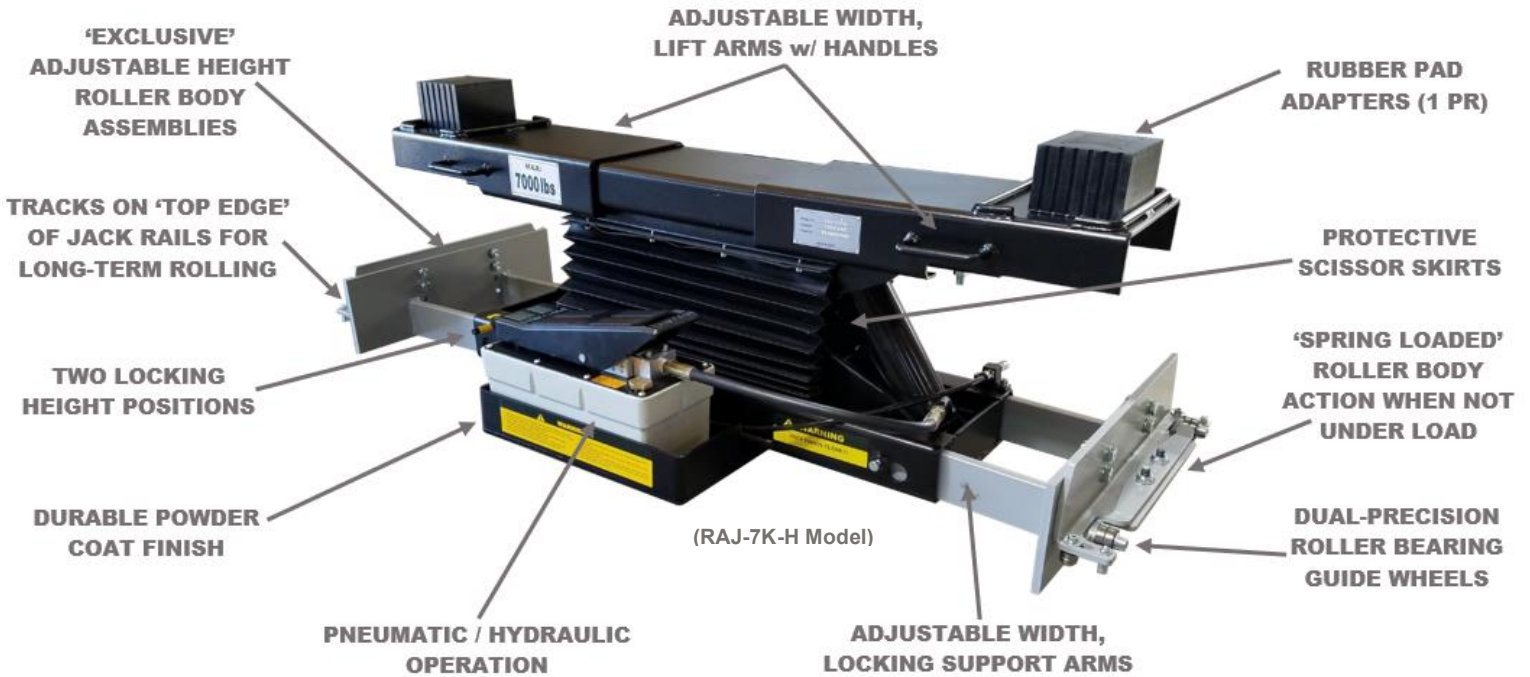
Premium Products at Affordable Prices!!



RAJ-7K-H & RAJ-7K-L

More Features, More Value!!

HIGH QUALITY, COMMERCIAL ROLLING BRIDGE JACKS 7,000 lb. CAPACITY



RAJ-7K-H (High Mount) includes ‘exclusive’ adjustable height Roller Body Brackets with (3ea) 1” Mount Heights available, allowing the best fit for **Low** configured integrated jack rails, keeping Jacks from touching the ground when lift is lowered.



Ideal for ‘Low’ configured Runway Jack Rails



3” Height Adjustment

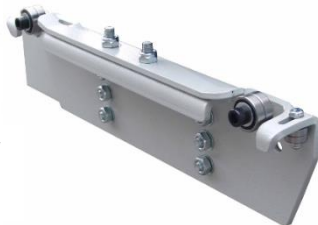


RAJ-7K-H

RAJ-7K-L (Low Mount) includes ‘exclusive’ adjustable height Roller Body Brackets with (2ea) 1” Mount Heights available, allowing the best fit for **Medium to High** configured integrated jack rails, keeping Jacks from touching the ground when lift is lowered.



Ideal for ‘Medium to High’ configured Runway Jack Rails



2” Height Adjustment



RAJ-7K-L

| iDEAL RAJ-7K Jacks for TUXEDO & iDEAL Four Post Lifts | | | |
|---|------------|-----------------------|----------------------|
| Brand | Lift Model | RAJ-7K-H (High Mount) | RAJ-7K-L (Low Mount) |
| TUXEDO | FP12K-K | | X |
| TUXEDO | FP14K | | O |
| TUXEDO | FP14KA | O | |
| iDEAL | FP14KC-X | X | O |
| iDEAL | FP14KAC-X | X | |
| TUXEDO | FP14KO-A | O | |
| X = Recommended / O = Acceptable | | | |



Premium Products at Affordable Prices!!

Phone: 877-558-9337
Fax: 817-558-9740

www.idealautoequip.com

