

## **INSTRUCTIONS TO SETUP ARTISAN SOFTWARE ON YOUR COMPUTER**

ARTISAN SOFTWARE WILL WORK ON A PC, MAC OR LINUX COMPUTER

### **1. DOWNLOAD THE LATEST ARTISAN SOFTWARE AT THESE LOCATIONS:**

Artisan Latest releases:

<https://github.com/MAKOMO/artisan/releases/latest>

#### **SIGN UP FOR FREE EMAIL SUPPORT:**

<https://lists.mokelbu.de/listinfo/artisan-user>

Artisan software:

Send Artisan-User mailing list submissions to  
[artisan-user@lists.einfachkaffee.de](mailto:artisan-user@lists.einfachkaffee.de)

To subscribe or unsubscribe via the World Wide Web, visit  
<https://lists.mokelbu.de/listinfo/artisan-user>  
or, via email, send a message with subject or body 'help' to  
[artisan-user-request@lists.einfachkaffee.de](mailto:artisan-user-request@lists.einfachkaffee.de)

### **YOU WILL NEED TO INSTALL THE TWO DRIVERS LISTED BELOW IN ORDER FOR YOUR COMPUTER TO RECOGNIZE THE ROASTER:**

FT232R DRIVER:

<http://www.ftdichip.com/Drivers/VCP.htm>

OR

CP210x USB to UART Bridge VCP Drivers (on some 2018 models)

<http://www.silabs.com/products/development-tools/software/usb-to-uart-bridge-vcp-drivers>

### **IF UNSURE INSTALL BOTH DRIVERS ON YOUR COMPUTER**

## **2. SETTING UP THE SOFTWARE**

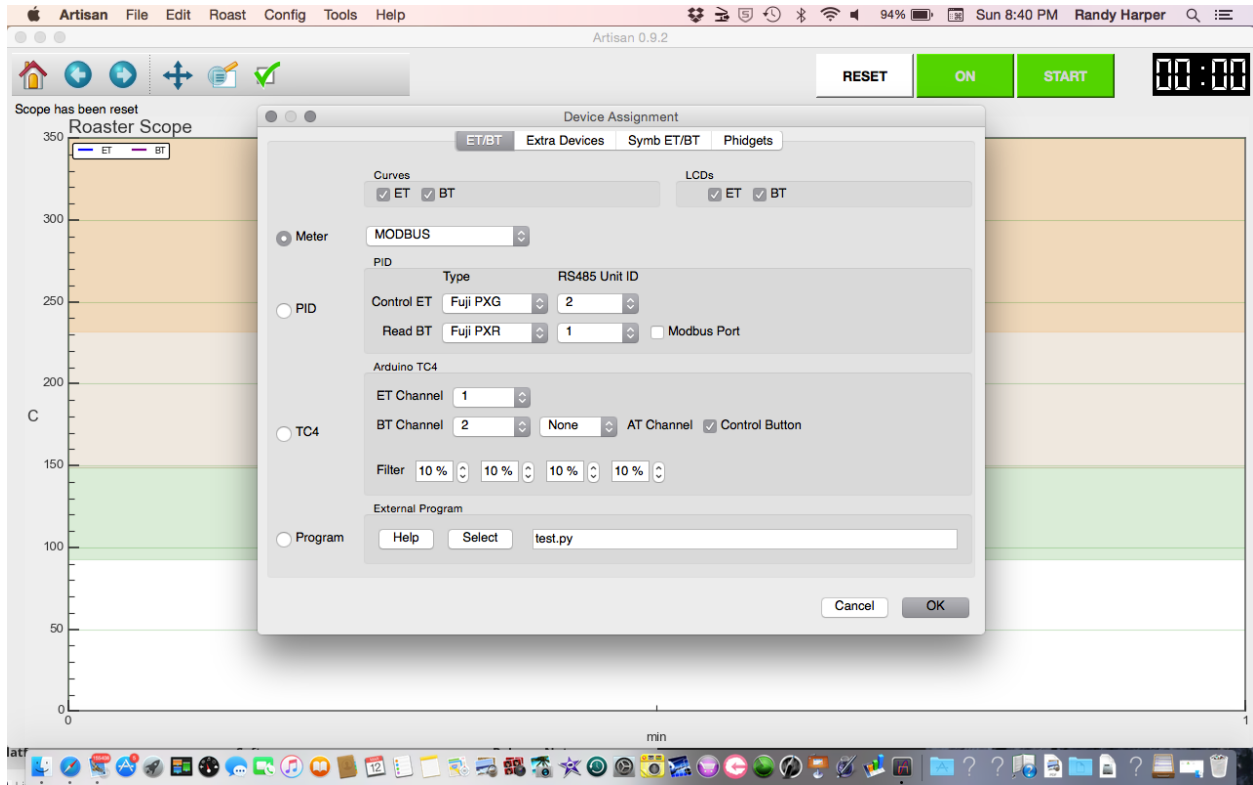
**TECH@BUCKEYECOFFEE.COM**

# BUCKEYE COFFEE ROASTERS

**A. AFTER INSTALLING THE CORRECT SOFTWARE FOR YOUR COMPUTER OPEN IT UP.**

**B. NEXT CLICK ON THE CONFIG BUTTON AT TOP OF SOFTWARE:**

**C. OPEN THE DEVICE WINDOW**



**D. CLICK ON THE METER DIVISE SETTING AND SET TO MODBUS & MAKE SURE THE ET & BT CURVES & LCDS ARE CHECKED. THEN CLICK OK**

**E. NEXT THE SERIAL PORT WINDOW SHOULD OPEN. BE VERY CAREFUL TO SET THIS UP WHILE ATTACHED TO ROASTER WITH THE USB CORD AND HAVE ROASTER ON.**

**F. CLICK THE DROP DOWN WINDOW FOR COMM PORT AND CHOOSE THE CORRECT USB PORT ATTACHED TO YOUR ROASTER. THIS MAY SAY THE NAME OF DRIVER SUCH AS FT232 OR CP2012 DRIVER:**

# BUCKEYE COFFEE ROASTERS

## THE SERIAL PORT SCREEN:

### IMPORTANT SETTINGS ON THE SERIAL PORT SCREEN:

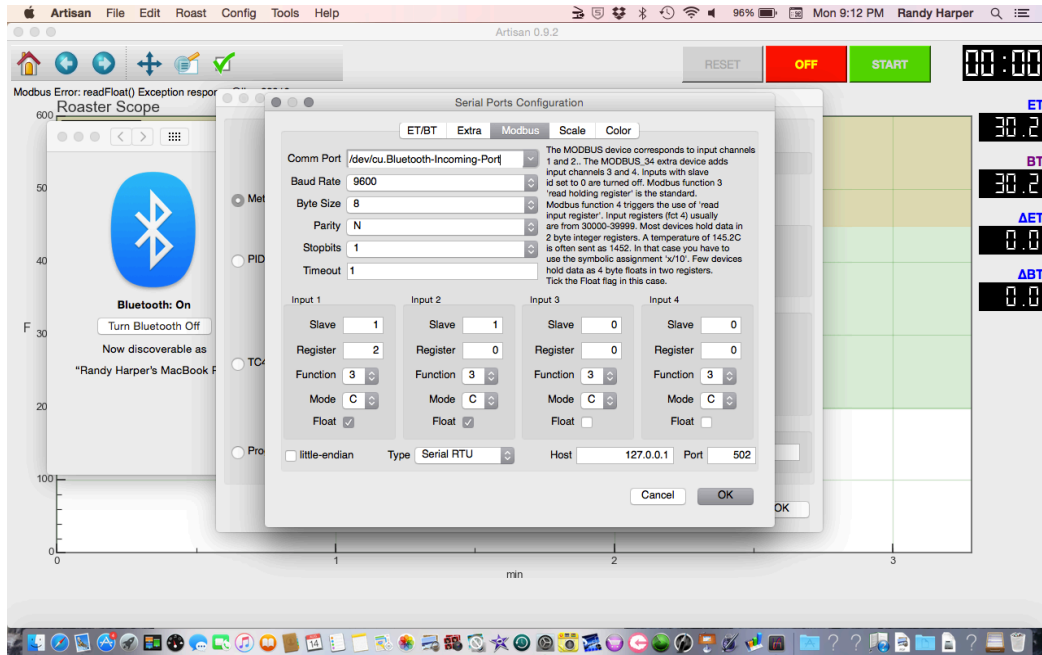
**MAKE SURE YOU SET ALL SETTINGS EXACTLY AS SEEN IN THIS SCREEN SHOT:**

**9600 BAUD RATE, BYTE: 8, PARITY N, STOPBITS 1, TIMEOUT 1,**

**INPUT 1: SLAVE 1, REGISTER 2, FUNCTION 3 MODE C,**

**INPUT 2: SLAVE 1, REGISTER 0, FUNCTION 3 MODE C, THEN CLICK OK.**

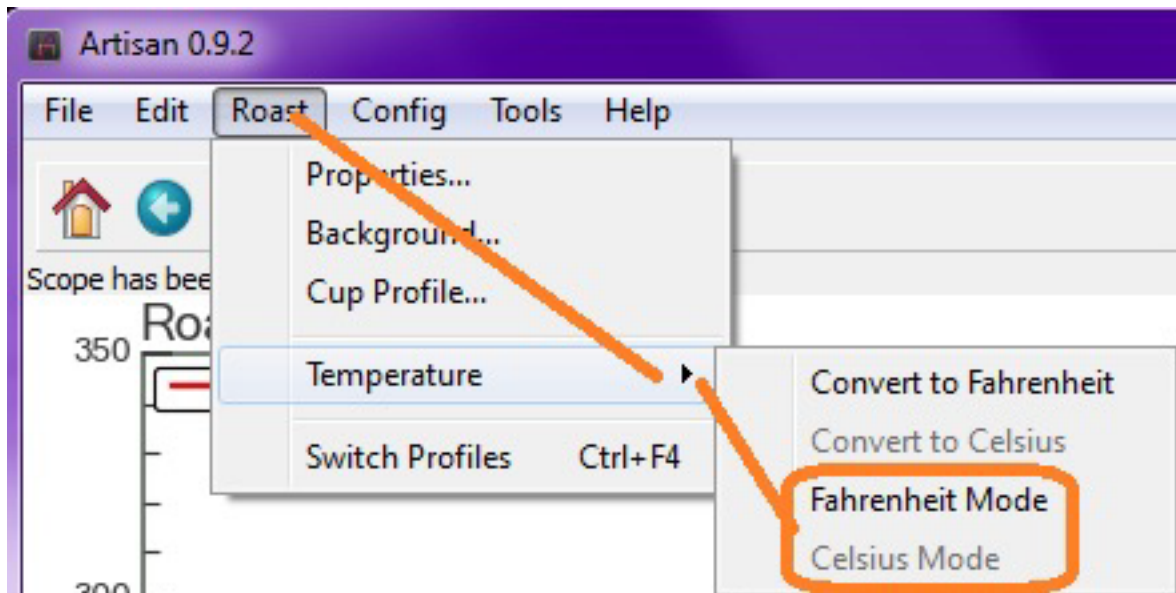
**\*NOTE:** DEPENDING ON THE DATA LOGGER INSTALLED ON YOUR MACHINE THE SERIAL PORT MAY SHOW FT232R PORT OR CP2102 PORT UNDER COMM PORT



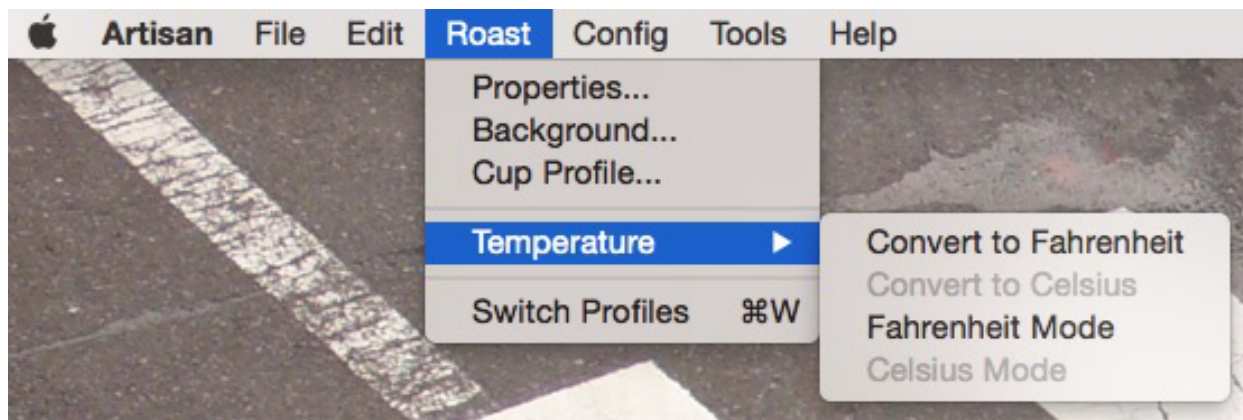
**IF**

**YOU NEED TO CHANGE THE READINGS FROM CELSIUS TO FAHRENHEIT**

**CLICK THE DROP DOWN MENU TITLED ROAST WHILE SOFTWARE IS NOT RUNNING:**



## BUCKEYE COFFEE ROASTERS



### **IF YOU NEED HELP:**

#### **SIGN UP FOR FREE EMAIL SUPPORT:**

<https://lists.mokelbu.de/listinfo/artisan-user>

ONCE YOU PROPERLY SETUP ARTISAN TO SYNC WITH YOUR ROASTER YOU CAN BEGIN USING IT. ARTISAN WILL GRAFT THE TEMPERATURE CONTROLS ON BOTH ET AND BT. IF YOU ARE USING A PHIDGET INSTEAD OF THE BUILT IN COMPUTER PROFILING SYSTEM PLEASE REFER TO THE PHIDGET SETUP GUIDE.

**WITH ARTISAN WHILE SOFTWARE TRACKS AND RECORDS THE TEMPERATURE CHANGES YOU MUST CLICK EACH BUTTON THAT APPLIES FOR CHANGES OCCURRING IN YOUR ROAST:**

**CLICK THE START BUTTON AND THIS SCREEN WILL APPEAR:**

**YOU WILL SEE MANY BUTTONS AT THE BOTTOM YOU CLICK TO RECORD EVENTS DURING THE ROAST:**

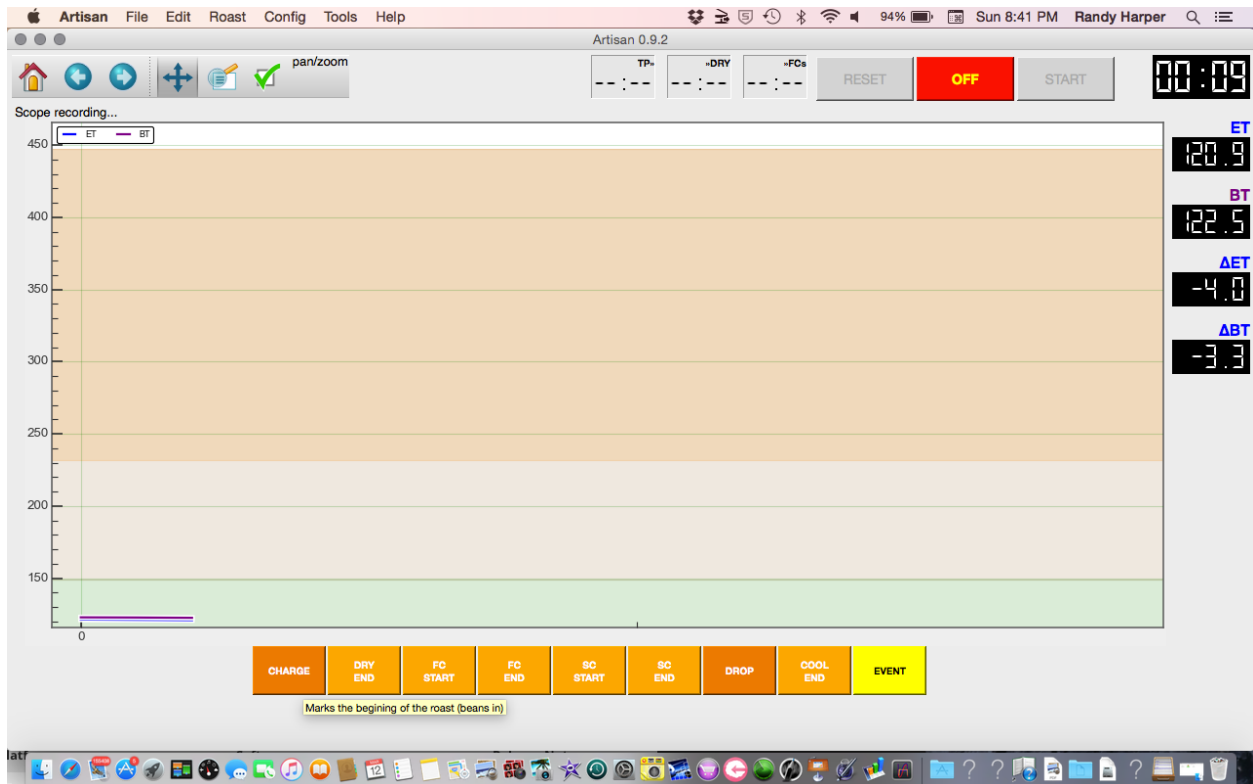
**CHARGE: WHEN YOU DROP BEANS INTO DRUM AFTER PREHEAT**

**DRY END: WHEN ROAST COMPLETES DRYING PHASE. (THE BEANS TURN FROM GREEN TO YELLOW) THE DRYING PHASE GENERALLY ENDS AROUND 335F (168C) AND THEN THE BROWNING OR MAILLARD PHASE BEGINS**

**FC START: FIRST CRACK STARTS**

**TECH@BUCKEYECOFFEE.COM**

# BUCKEYE COFFEE ROASTERS



**FC ENDS: THE ENDING OF FIRST CRACK**

**SC STARTS: BEGINNING OF 2ND CRACK**

**SC ENDS: IF ROASTING VERY DARK YOU MAY IN RARE CASES TAKE ROAST TO END OF 2ND CRACK**

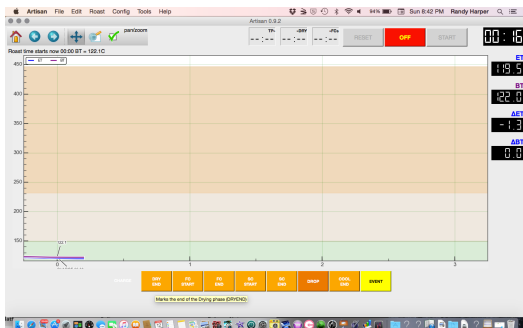
**DROP: DROPPING BEANS INTO COOLING TRAY**

**COOL END: SOME PEOPLE WANT TO RECORD EXACT TIME OF COOLING BEANS IN TRAY EVENT.**

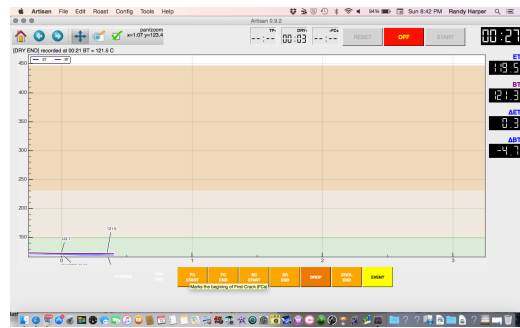
**HERE ARE THE SCREENS SHOWING THE ABOVE BUTTONS BEING PRESSED:**

**(NOTE: THIS WAS NOT DURING AN ACTUAL ROAST)**

**SCREEN AFTER CHARGE**



**SCREEN AFTER DRY END**



**TECH@BUCKEYECOFFEE.COM**

BUCKEYE COFFEE ROASTERS

AFTER FIRST CRACK START

AFTER FC ENDS

AFTER 2ND CRACK STARTS

AFTER 2ND CRACK ENDS

AFTER

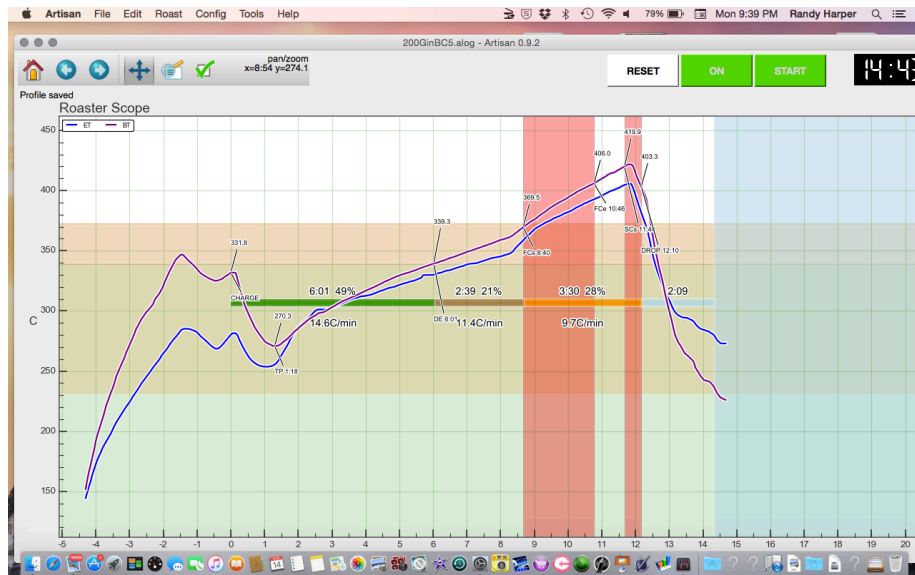
DROP

INTO  
COOLING  
TRAY  
AFTER  
COOLING  
IS DONE

ENTIRE ROAST PROFILE (DEMO)

TECH@BUCKEYECOFFEE.COM

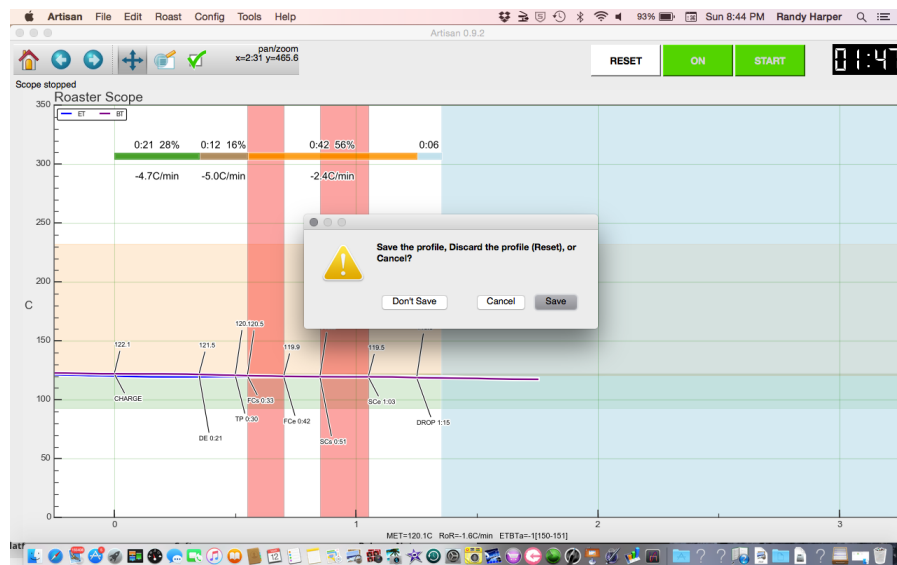
# BUCKEYE COFFEE ROASTERS



**AFTER**

**DONE**

**ROASTING IF YOU WISH TO SAVE PROFILE THEN SAVE ON COMPUTER OR DRIVE TO RELOAD AND FOLLOW LIKE A RECIPE FOR FUTURE ROASTS. THERE IS NO LIMIT TO THE NUMBER OF PROFILES YOU CAN SAVE**



**NAME**

**FILE**

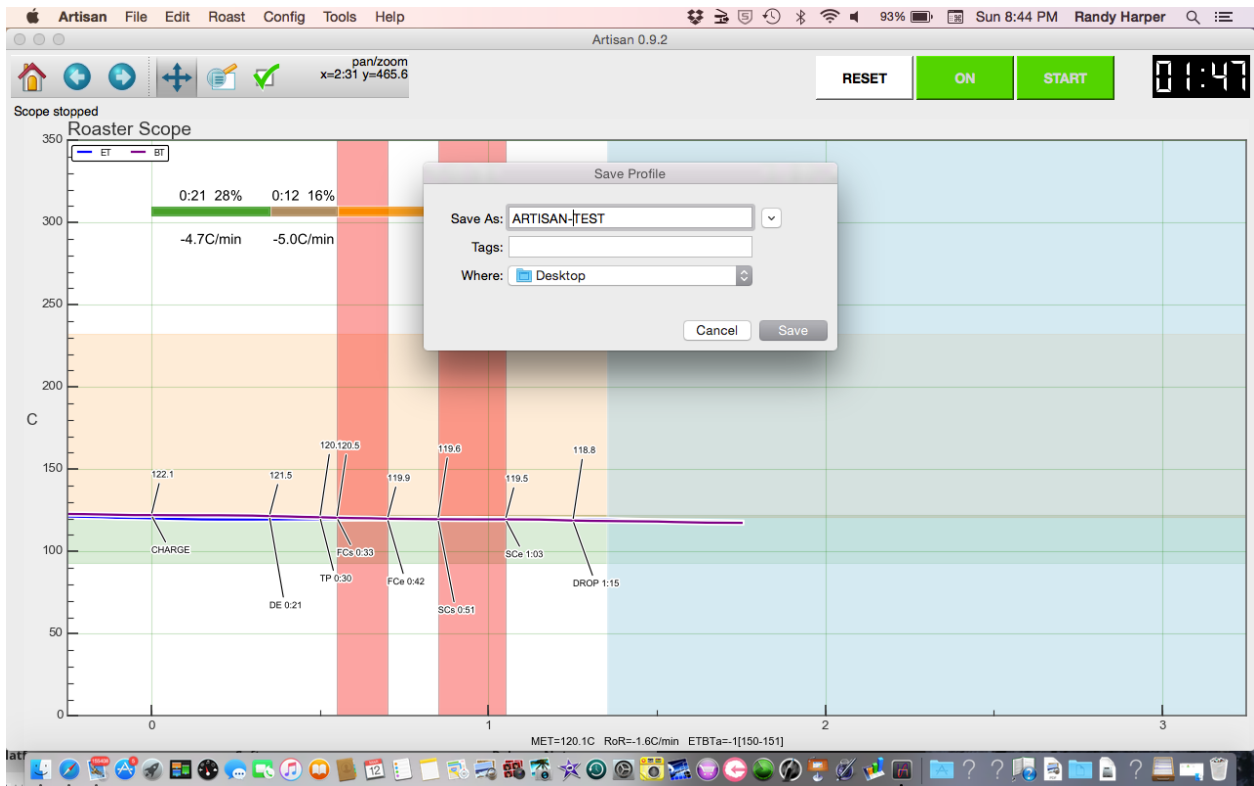
**ANYTHING YOU CHOOSE: BEAN TYPE OR CROP AND ROAST TYPE:**

**IN YOU NEED FURTHER ASSISTANCE WE HAVE VIDEOS ON THE TECH PAGE OF OUR WEBSITE OR YOU CAN SIGN UP FOR ARTISAN SUPPORT OR EMAIL:**

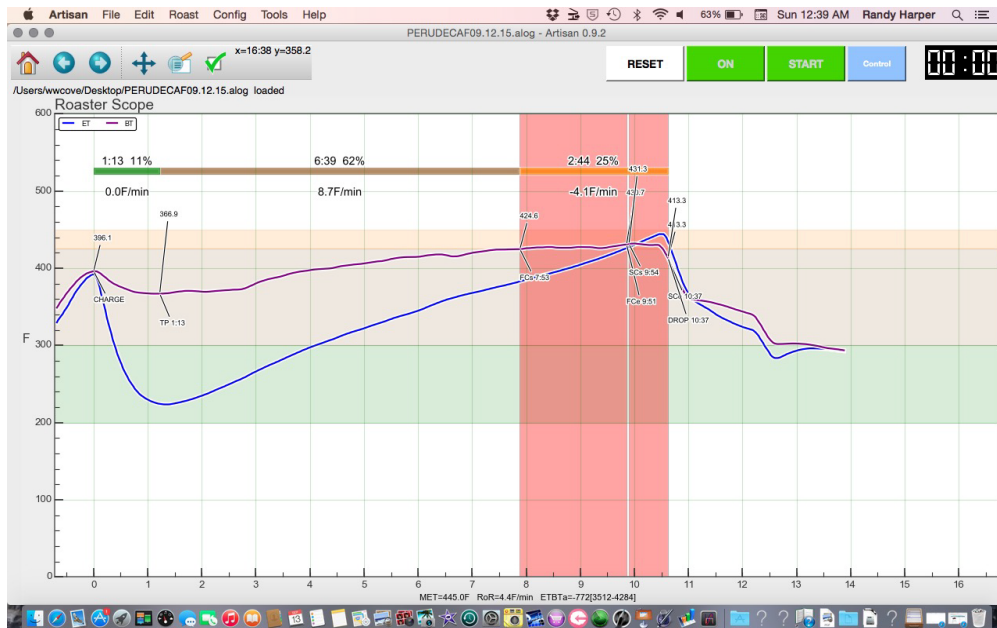
**[TECH@BUCKEYECOFFEE.COM](mailto:TECH@BUCKEYECOFFEE.COM)**

**[TECH@BUCKEYECOFFEE.COM](mailto:TECH@BUCKEYECOFFEE.COM)**

# BUCKEYE COFFEE ROASTERS



### EXAMPLE OF A ROAST PROFILE:



**TECH@BUCKEYECOFFEE.COM**