



## District® Youth Perfect Tri® Long Sleeve Hoodie DT139Y



A lightweight tri-blend essential that's perfect all year round.

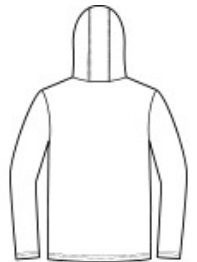
- 4.5-ounce, 50/25/25 poly/combed ring spun cotton/rayon, 32 singles
- Tear-away label
- Shoulder to shoulder taping

### CARE INSTRUCTIONS

Machine wash cold with like colors. Non-chlorine bleach when needed. Tumble dry low. Cool iron if necessary.

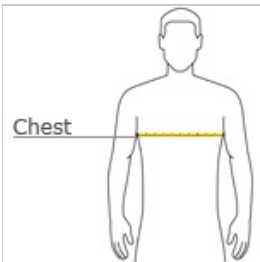


front



back

### HOW TO MEASURE



#### CHEST WIDTH

Measure under the arm and around the fullest part of the chest with arms down, keeping tape horizontal.

### SIZE CHART

	XS	S	M	L	XL
Size	4/5	6/8	10/12	14/16	18/20
Chest	22-24	25-27	28-30	30-32	32-34

### COLOR INFORMATION



Black Frost  
PMS 426C



Deep Royal  
PMS 288C



Grey Frost  
PMS COOL GREY PMS 2379C  
10C



Navy Frost



## District® Women's Perfect Tri® Long Sleeve Hoodie. DM139L



The perfect fusion of lightweight comfort and carefree style.

- 4.5-ounce, 50/25/25 poly/combed ring spun cotton/rayon, 32 singles
- Tear-away label
- Shoulder to shoulder taping
- Split V-neck with marrow edge

Please note: This product is transitioning from woven labels to tear-away labels. Your order may contain a combination of both labels.

*Tri-Blend fabric infuses each garment with unique character. Please allow for slight color variations. Due to the heat sensitivity of tri-blend fabrics, special care must be taken throughout the printing process. Consult your decorator or ink supplier for best printing practices.*

### CARE INSTRUCTIONS

Machine wash cold. With like colors. Only non-chlorine bleach when needed. Tumble dry low.

Warm iron if necessary

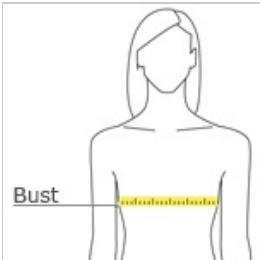


front



back

### HOW TO MEASURE



#### BUST

Measure under the arm and around the fullest part of the bust with arms down, keeping tape horizontal.

### SIZE CHART

	XS	S	M	L	XL	XXL	3XL	4XL
Size	2	4/6	8/10	12/14	16/18	20/22	24/26	28/30
Bust	32-34	35-36	37-38	39-41	42-44	45-47	48-51	52-55

### COLOR INFORMATION



Black Frost



Charcoal



Deep Royal



Fuchsia Frost



Grey Frost  
PMS 424 C



Navy Frost  
PMS 2379 C



## District® Perfect Tri® Long Sleeve Hoodie. DM139



A lightweight tri-blend essential that's perfect all year round.

- 4.5-ounce, 50/25/25 poly/combed ring spun cotton/rayon, 32 singles
- Tear-away label
- Shoulder to shoulder taping

Please note: This product is transitioning from woven labels to tear-away labels. Your order may contain a combination of both labels.

*Tri-Blend fabric infuses each garment with unique character. Please allow for slight color variations. Due to the heat sensitivity of tri-blend fabrics, special care must be taken throughout the printing process. Consult your decorator or ink supplier for best printing practices.*

### CARE INSTRUCTIONS

Machine wash cold. With like colors. Only non-chlorine bleach when needed. Tumble dry low. Warm iron if necessary

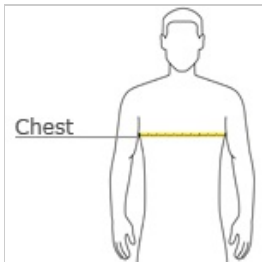


front



back

### HOW TO MEASURE



#### CHEST WIDTH

Measure under the arm and around the fullest part of the chest with arms down, keeping tape horizontal.

### SIZE CHART

	XS	S	M	L	XL	2XL	3XL	4XL
Chest	32-34	35-37	38-40	41-43	44-46	47-49	50-53	54-57

### COLOR INFORMATION



Black Frost  
PMS 426C



Charcoal



Deep Royal



Grey Frost

PMS COOL GRAY PMS 2379C  
10C



Navy Frost