

Water Service Line Material Survey

The City of Fostoria is in the process of identifying and mapping all water service line materials as required by the Ohio and US EPA. You can help us improve our data and mapping system by verifying your service line material at your home or business.

PLEASE RESPOND BY JANUARY 1ST 2024

INDENTIFICATION OF WATER SERVICE LINES

You or your landlord can perform a visual inspection to see what your service line is made of. Your private water service line in your basement or crawlspace could be made of four different materials depending on the age of your plumbing fixtures: lead (top left), copper (top right), galvanized steel (bottom left), plastic (bottom right).

Instructions on how to do a scratch test to identify your service line material can be found below.



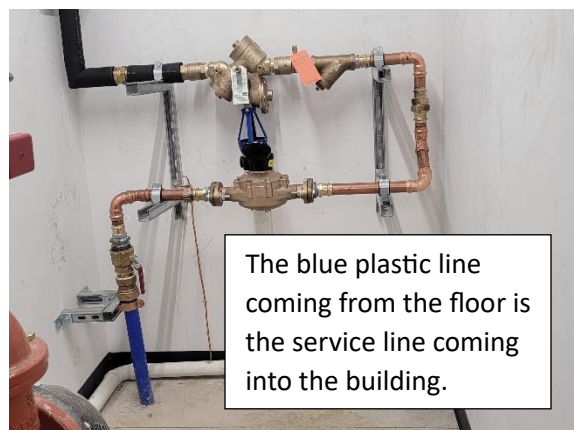
LEAD



COPPER



GALVANIZED STEEL



The blue plastic line coming from the floor is the service line coming into the building.

PLASTIC

Please follow the steps below, and then send the results of the test along with a picture of your service line, size of the service line and your address to waterdist@fostoriaohio.gov. The City of Fostoria will include your results in their water service line inventory records.

HOW DO I CHECK MY SERVICE LINE MATERIAL?

To find out if you have lead, copper, or galvanized steel service on your property, you (or your landlord) can perform a *scratch test* on the water service line, between the wall and where it connects to the water meter. **Please do not perform a scratch test on your plastic service line or use a knife or other sharp instruments to do the scratch test and be careful not to puncture a hole in the pipe!**

WHAT YOU NEED:

- A house key or coin
- A strong refrigerator magnet

STEPS TO CHECK YOUR SERVICE LINE:

- Find the water meter on your property.
- Look for the pipe that comes through the outside wall (or the floor, as illustrated above) and connects to your meter.
- Use a key or coin to **GENTLY** scratch the pipe. If the pipe is painted, use sandpaper to expose the metal first.
- Place the magnet on the pipe to see if it sticks to the pipe.
- Determine your pipe material and send your results to waterdist@fostoriaohio.gov

YOUR TEST RESULTS



COPPER PIPE

If the scratched area is copper in color like a penny.
A magnet will **NOT** stick to copper pipe.



LEAD PIPE

If the scratched area is shiny and silver, your service line is lead.
A magnet will **NOT** stick to a lead pipe.



GALVANIZED STEEL PIPE

If the scratched area remains a dull gray, your line is galvanized steel.
A magnet **WILL** stick to this pipe.

If you are having troubles or would like to have one of our trained employees identify your service line, please call 419-435-2486 to schedule an appointment.

***Please disregard this survey if you previously scheduled an appointment from receiving an orange card.**