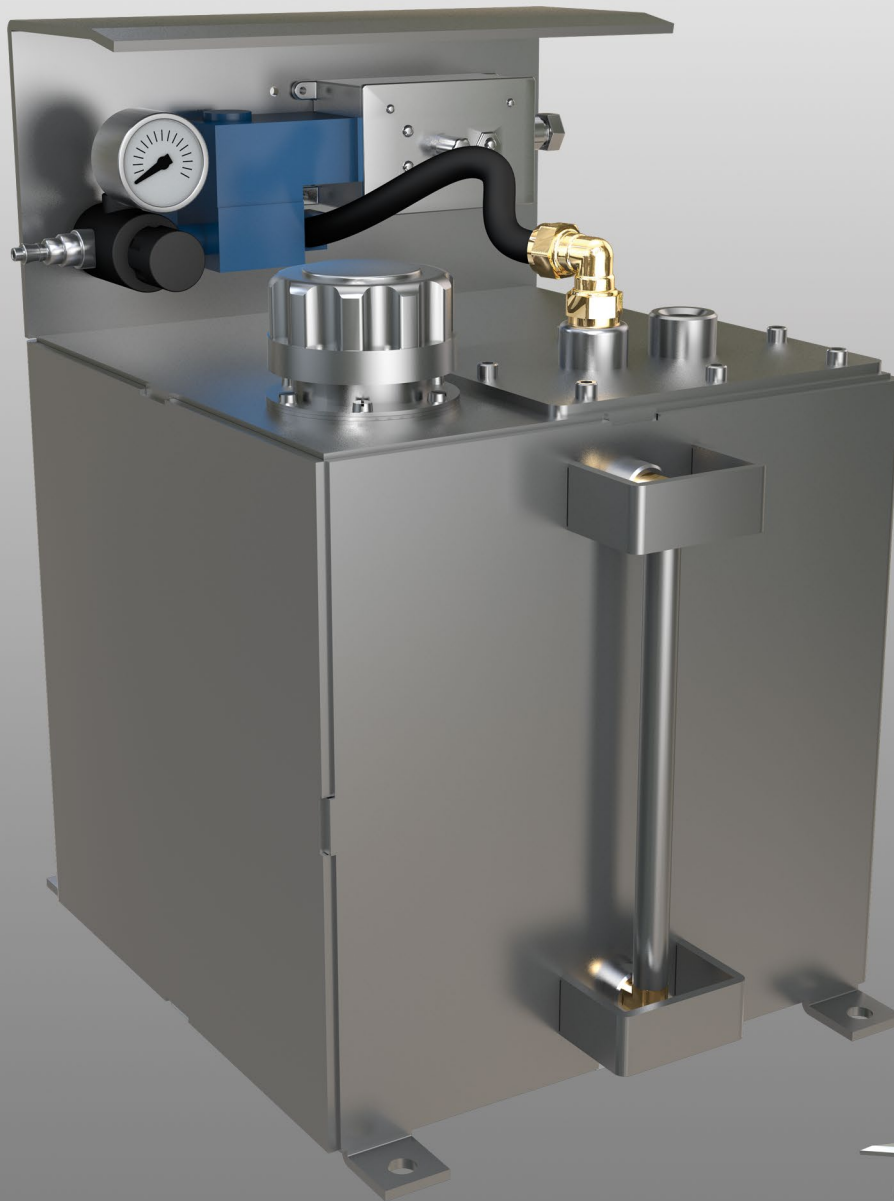


 **MATEX**
CONTROL CHEMICAL

MATEX LUBRICATOR



The easy way to manage your drilling lubricants.

MATEX LUBRICATOR INSTALLATION

All Matex Lubricator Systems should be installed with the discharge side of the pump connected to the bit Air. The air supply can be connected in a combination of ways:

(a)

If the air supply can be sourced by accessory air, the air supply to the lubricator should be made to the accessory air. The regulator should be set at a PSI greater than that of the bit air.

Example: If the bit air is 35 PSI, the regulator should be set at 20 PSI greater.

The timer should be connected so the power supply is activated with bit air. If this is not possible, it may be necessary to install a pressure switch in the bit air supply after the butterfly valve. This will ensure that the Matex lubricator will only operate when bit air is activated.

(b)

If the bit air is greater than 35 PSI the air supply to the Matex lubricator may be taken from the bit air.

Make sure this is installed after the butterfly valve and before the discharge inlet from the Matex lubricator.

This will ensure that the lubricator will only operate when the bit air is activated. The timer then can be connected to any switched power supply that is on when the drill is operating.

(c)

The discharge line of the Matex Lubricator should be installed after the butterfly valve and of the water injection pump, this is only needed if you're injecting a water soluble lubricant and will ensure a better mix with the water.

MATEX LUBRICATOR

ELECTRONIC TIMER:

The timer operates on 12 or volt DC. The timer control assembly can be removed by undoing the four screws from the face of the control panel. The timer can be unplugged from the connector on the back side of board. REMEMBER THIS CONNECTION CAN ONLY BE MADE ONE WAY! MAKE SURE THE CONNECTION PIN IS ALIGNED PROPERLY!

WIRING:

12 volt DC	BLACK is POSITIVE	WHITE is NEGATIVE	GREEN is not needed
24 volt DC	BLACK is POSITIVE	WHITE is NEGATIVE	GREEN is not needed

SOLENOID:

The solenoid is located next to the timer and they operate on 12 volt DC. This allows the air to pass to the inlet side of the pump when activated by the timer.

REGULATOR:

The regulator has a working pressure 0-120 PSI. The regulator can be adjusted by pulling out on the black knob, turn clockwise to increase or counter clockwise to decrease. **The working pressure should not be less than 35 PSI, as the pump will not operate properly.**

PUMP:

The pump is located in the tank and can be removed without emptying the tank. The pump pressure is a four to one multiplier. The inlet side of the pump is connected to the outlet side of the timer. The discharge side of the pump is connected to the copper pipe joined to the underside of the face plate. **The discharge line should never be larger than a #4 hydraulic hose**, as this will take away from the working pressure of the pump due to the expansion in the hose.

TANK:

The tank is made of aluminium, and should be fastened down to eliminate vibration.

DO NOT WELD ON TANK!

MATEX LUBRICATOR: TROUBLE SHOOTING

TIMER:

Ensure the switch is in the **ON** position.

Check the power supply.

If everything has been checked, timer board may need to be replaced.

Disconnect power supply, remove air supply and air inlet line to pump, then remove timer assembly.

PUMP:

To check if the pump is operating:

Turn the timer to the **OFF** position and remove the discharge line from the top of the tank.

Manually operate pump by clicking the switch manually on and off a few times. The oil should discharge a few inches high, depending on the air supply setting.

If oil does not appear, remove the air supply line from the inlet side of the pump and manually operate the timer to check if air is supplying the pump.

If air is not discharging, check the solenoid.

If air is discharging at the inlet side of the pump and the timer is operating properly, disassemble and clean inside of pump.

SOLENOID:

Ensure the solenoid is operating. There should be a clicking sound or air should discharge from air supply pump.

Check the air supply.

If air is not discharging from the solenoid, then the timer assembly will have to be replaced.

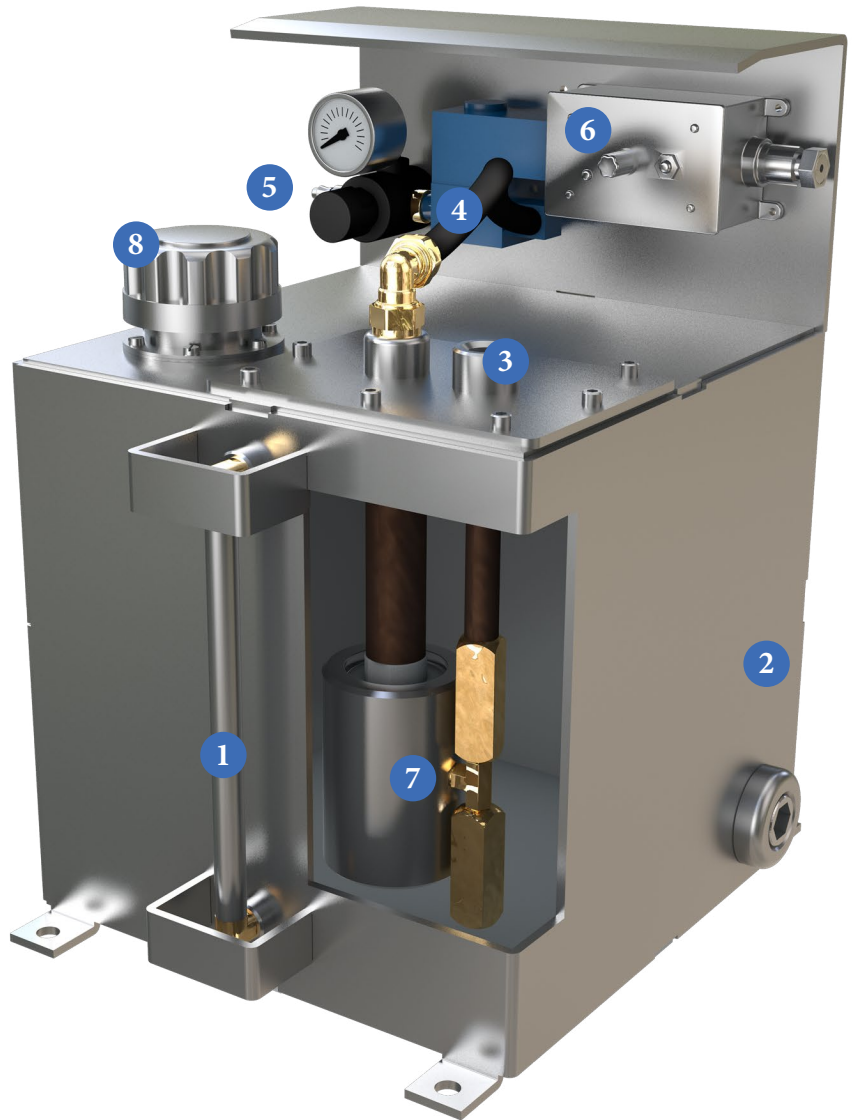
REGULATOR:

Check the regulator for a working pressure greater than 35 PSI.

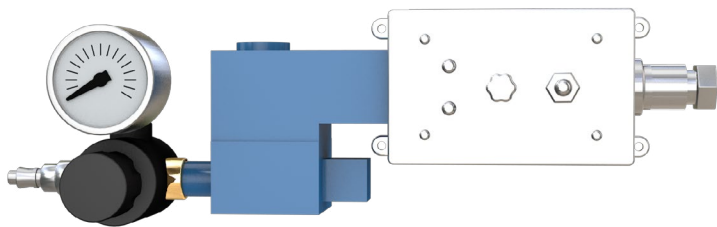
Check air supply.

**For further information please call your local distributor or Matex Control Chemical 7016 – 30 St. SE,
Calgary, Alberta CANADA, T2C 1N9 Ph(403) 720-7044 - Toll Free 1-800-267-6840
Fax(403) 720-4951 -Email: brianc@controlchemical.com -Website: www.matex-ccc.com**

- 1 SIGHT TUBE
- 2 ALUMINUM TANK
- 3 FLUID DISCHARGE
- 4 AIR SUPPLY TO PUMP
- 5 INTAKE AIR SUPPLY



- 6 AIR REGULATOR AND GAUGE/SOLENOID/ELECTRONIC TIMER CONTROL



- 7 PUMP



- 8 FILLER CAP W/ STRAINER



ADDITIONAL ACCESSORIES AVAILABLE UPON REQUEST:

- Hot water heater
- Block Heater - 120 VOLT

MATEX LUBRICATOR

The Matex Lubricator is AIR operated and TIME activated. The Matex Lubricator is completely self-contained and easy to install. The Matex Lubricator can be used to inject a wide range of different products such as Tri-Lube, RDO-302 ES, Foam etc. **If injecting foam, a Matex soluble lubricant must be used to avoid rust that could be caused from the foam.**

The pump is designed to deliver a measured amount of product each injection to ensure a proper mixture. The pump also has been designed with only one moving part to ensure low maintenance.

The timer assembly is available in a range of different voltages and is designed to measure the exact amount of injection necessary to deliver the amount of product desired. The timer is also available with a setting dial on the face of the timer for ease of increasing or decreasing the amount of product necessary, or timer can be pre-set for lubricating at a set rate.

The Matex Lubricator has a one year warranty against manufacture defects from date of purchase on replacement parts only.

PUMP SPECIFICATIONS:

Air supply working pressure	50 psi - 150 psi
Pump discharge pressure	4 X 1 multiplier
Pump discharge volume	7.3 ml per stroke

TIMER SPECIFICATIONS:

Voltages	12 or 24 volt DC
Pump volume75 to 2.5 Litres per hour
Pump activation time	4-6 sec
Pump delay time	5-30 sec

LUBRICATOR DIMENSIONS

27.5" x 24" x 30"...	50 gal
15.5" x 12" x 18"	7.5 gal

SHIPPING DIMENSIONS

28.25" x 29.25" x 32.5"(H)	50 gal
17.25" x 17.25" x 20"(H)	7.5 gal

SHIPPING WEIGHT

50 Gal - 140lbs
7.5 Gal - 52lbs

SPECIAL LUBRICATORS AVAILABLE UPON REQUEST