

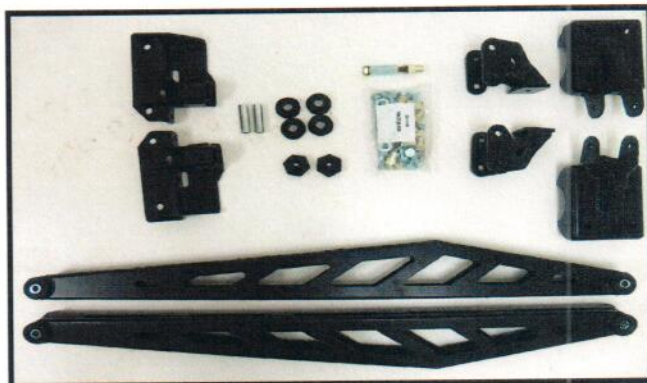


5680 W. Barstow, Fresno, CA 93722
PH: (559) 226-8196 (559) 277-0457 FAX
www.mcgaughys.com

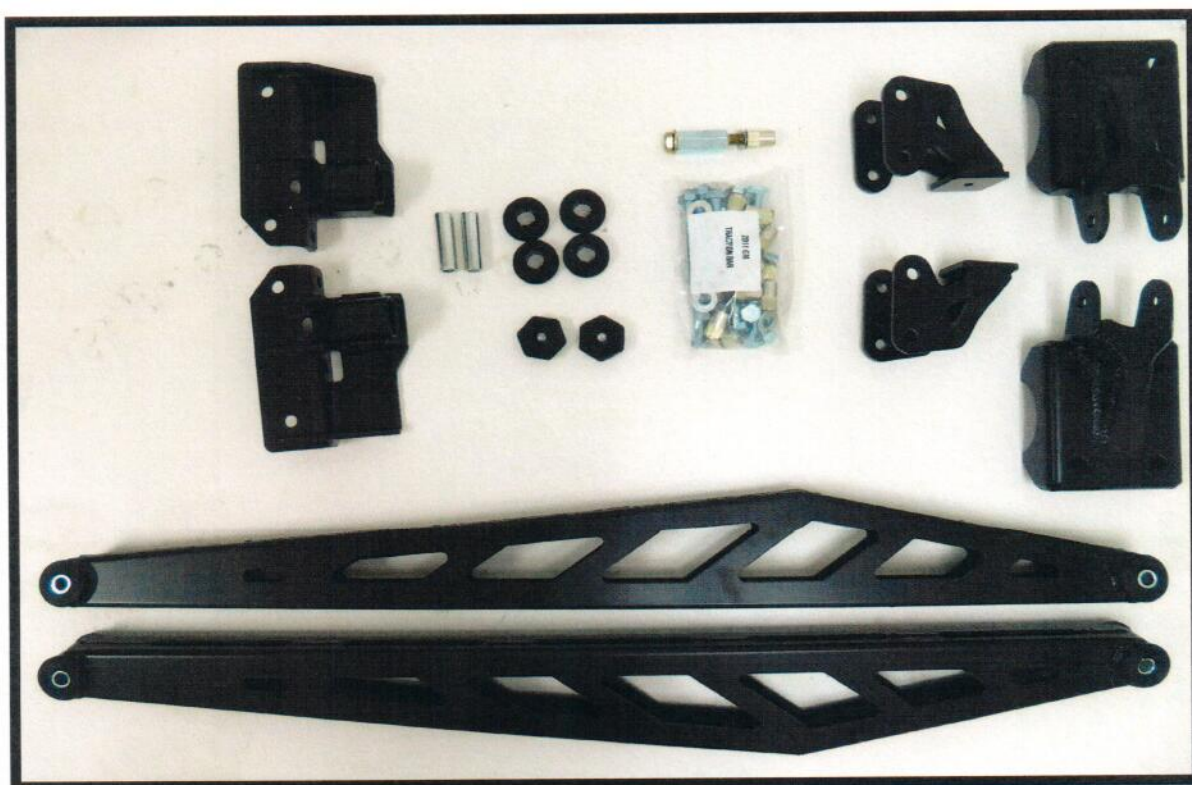
STOP---READ THIS FIRST!

****Read These Entire Instructions Before Starting Anything****

GM Traction Bars



****NOTE**** Before installing kit, ensure all parts are in package before continuing.
Billet inserts are shown below but not included unless ordered (additional cost)



1. (2) REAR TRACTION BARS
- 2.(2) SHACKLES
- 3.(2) UPPER FRAME BRACKET
- 4.(2) LOWER AXLE MOUNT
- 5.(1) TRACTION BAR HARDWARE PACK
6. (4) BUSHINGS/ (2) SLEEVES
7. (2) BUMPS STOPS
8. (1) RIV-NUT PULLER TOOL

****OPITIONAL UPGARDES****

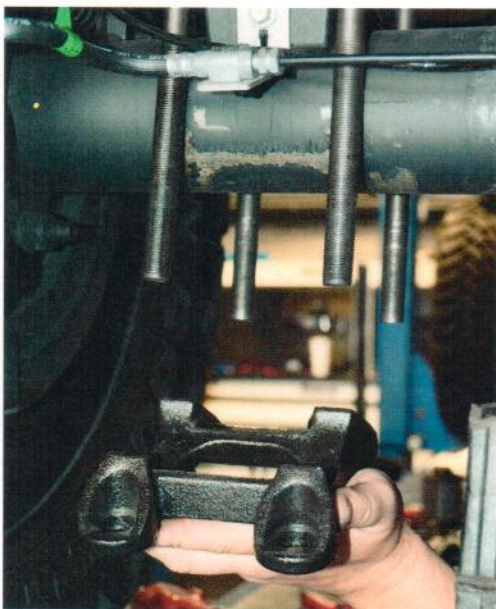
1. BILLET TRACTION BAR INSERTS(2)
2. POLISHED HARDWARE (1)

****THESE ITEMS ARE NOT INCLUDED
IN KIT****

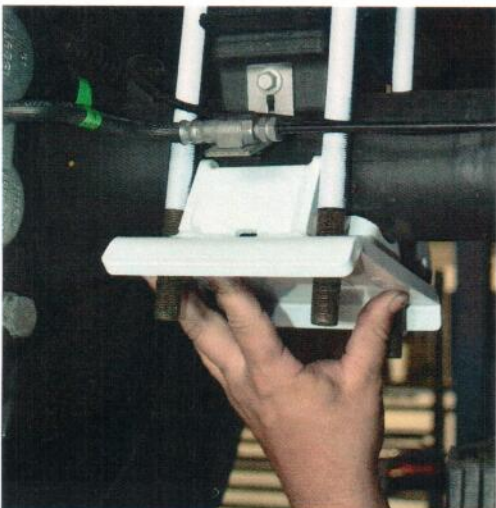
1. Secure vehicle on jack stands w/ rear-end hanging.
2. Remove the factory u-bolt nuts using a 15/16 socket.



3. Remove factory lower u-bolt plate.



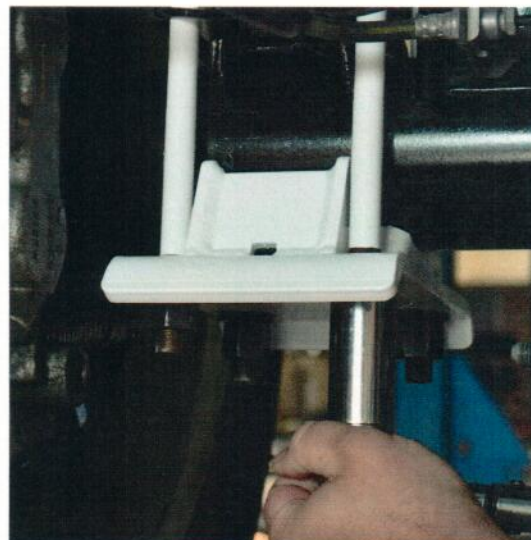
4. Install new McGaughy's u-bolt plate.



5. Apply a small amount of Never Seaz to u-bolt nuts before installing if available.



6. Tighten u-bolt nuts to 120 ft. lbs.



7. Repeat steps for other side of vehicle.

8. Insert backend of traction bar into u-bolt mount using the supplied 1/2"x13x4.75" long bolt.



9. Install bolt with washer and toplock through the traction bar mount on the backside. Do not tighten.



10. Assemble shackle to frame mount using another 1/2"x13x 4.75" bolt with washer, going through the frame mount and shackle.



11. Place washer and toplock nut on the backside.
12. Assemble shackle to traction bar using a 1/2"x13x4.75" long bolt.



13. Place mount against the bottom of the frame rail.



14. Engage frame mount against the bottom and face of the frame. Slide the frame mount back until the shackle bump stop is flush with the shackle mount. (picture below)



[Vehicle must be on it's own weight when completing this step, otherwise there will be a gap when completed!]

15. Scribble a circle onto the frame.



16. Drill frame to 11/16" (start with 1/4", then 3/8", then 1/2", then 5/8", and then the 11/16")
(Make sure you are clear of any fuel lines or wires you can not see before drilling.)



17. Insert sinch nut into frame using the supplied tool. Tighten nut down using a 3/4" socket and 13/16" wrench.



18. Using a 1/2"-13x1-1/4" bolt, bolt frame mount to the frame.



19. With the frame mount snugged down, mark the 3 side holes and the front bottom hole using a 1/2" center punch.



20. Drill the three holes. (start with 1/4", then 3/8", then 1/2", then 5/8", and then the 11/16"). Then using the nutzerk tool, install them into the holes.



21. Insert nutsert.

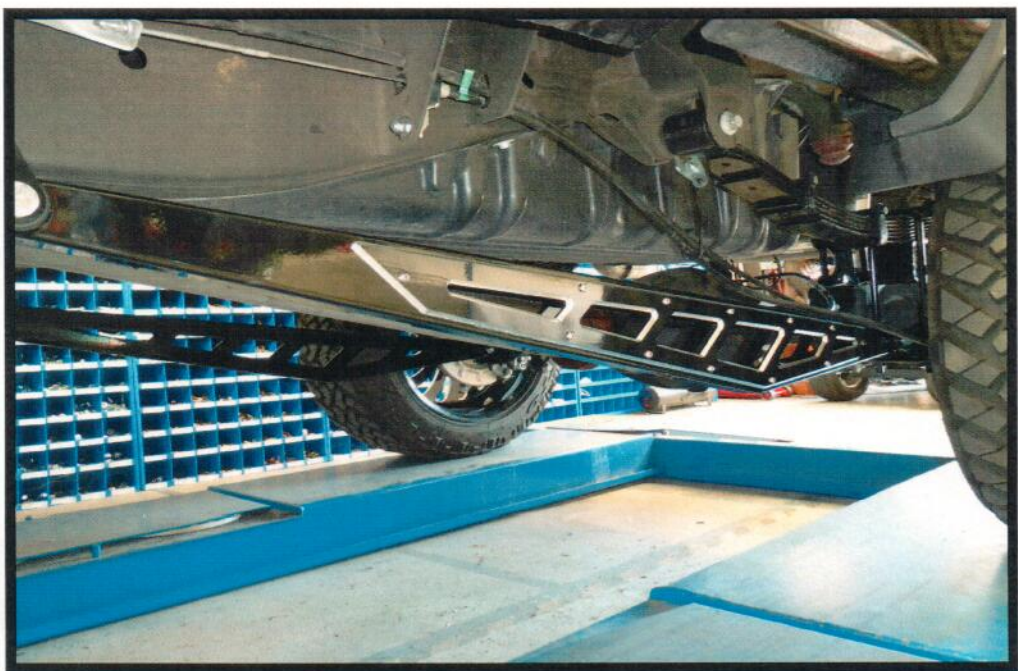
22. Using a 1/2"x13x1-1/4" bolt, bolt the side mounts onto the frame and snugg down.



23. Reinstall shackle to frame mount. Torque all bolts to 55 ft.lbs.



24. Install traction bars in place using provided hardware.



25. Torque traction bar bolts to 60ft. lbs check all bolts

26. Do the same on the other side of vehicle.

Final Notes

Ensure all hardware is completely tightened.

Check the entire vehicle to make sure nothing is rubbing. Check all tire for clearance and all brake line hose, sensors, etc.

After 500 miles look under vehicle, inspect it, and make sure to re-tighten everything.

Billet Face Plates

****NOTE****

Mcgaughys accent plates are an additional cost to traction bars.

During install use caution as you don't want to scratch or damage finish to either plates or bars.

Start by laying out parts from box. Ensure all parts are in box before beginning to install product.

****You should have 2 traction bars, 2 upper shackle mounts, 2 U-bolt retainer plates, (4) Sleeves and (8) bushings, Accent plates (2) and polished hardware (24 bolts, 24 Washers, 24 Nylock nuts). It is very important you check contents before installing.****

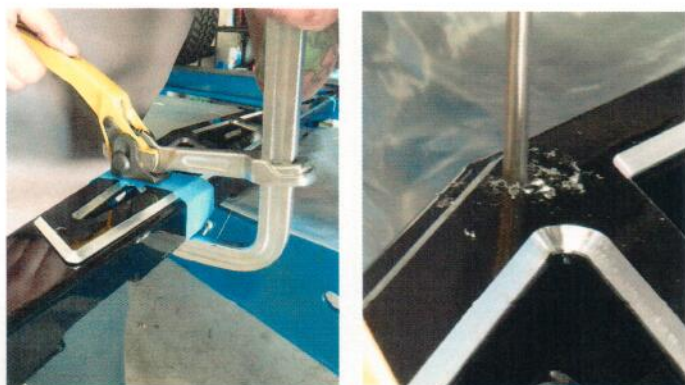
1. Install bushing and sleeves to traction bars.
each end will get 1 sleeve and 2 bushings pressed in.



2. Layout traction bars and accent plates, make sure you line up the accent plates to traction bar.

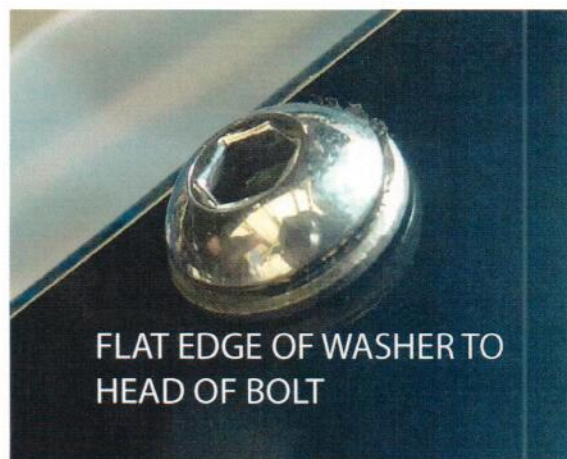


3. Once you have lined up the accent plate to traction bar, use tape to hold in place and a clamp to secure plate while you drill holes using 1/4 drill bit.



4. After holes are made use provided hardware to install accent plate (polished hardware).

PLACE WASHER FLAT END TO UP AND ROUNDED END AGAINST BILLET PLATE, THIS IS CRITICAL, TO ENSURE POWDER DOES NOT PULL FROM SHARP EDGE.



- 4B. Use a 5/32 allen and 7/16 wrench to tighten.
Do not use drills to tighten, you could ruin the finish.

