

POWERS' PICKS \$15

Volume 10 Issue 16

November 1st-7th 2022

© 2022 BP Sports, LLC

CFB/NFL Best Bets are 36-24-1 This Year! CFB Wk 9 Best Bets Pg 3, NFL Wk 8 Best Bets Pg 7

Week 8 News and Notes!

For those of you that are new, in this section we'll recap what happened last week specifically, the misleading finals, the key injuries, the bad beats and the line moves. We'll include most of these recaps here, therefore you don't have to waste time reading about them in my game-by-game write-ups for the upcoming week. Without further adieu, here's a run down of what happened last week in the world of CFB.

Week 8 Trends

Favorites-Dogs

Straight Up
ATS

36-17
24-29

Home-Away

Straight Up
ATS

35-18
31-22

Totals (O/U)

Over-Under

22-31

Season To-Date

Favorites-Dogs

Straight Up
ATS

417-123
255-276-8

Home-Away

Straight Up
ATS

370-161
269-253-8

Totals (O/U)

Over-Under

259-272-8

Largest Favorites to Cover:

Tennessee (-38.5) vs UT-Martin, 65-24

Ohio St (-29.5) vs Iowa, 54-10

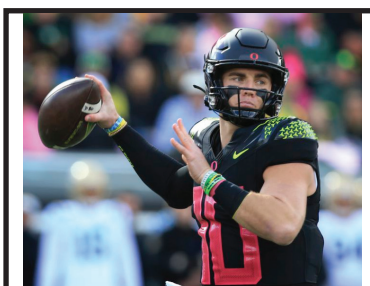
Oregon St (-23) vs Colorado, 42-9

Biggest Money line Upsets:

FIU +400 won 34-15 at Charlotte (+14)

Duke +285 won 45-21 at Miami, FL (+10)

Marshall +280 won 26-12 at James Madison (+9.5)



Bo Nix and Oregon have rebounded nicely since the opening week blowout loss to Georgia. The Ducks have now won six straight highlighted by last week's 45-30 win over No. 9 UCLA.

ATS Notables

Best ATS teams with cover margin:

Tulane 7-1 +6.25 points per game

Tennessee 6-1 +7.9

Wake Forest 6-1 +5.0

Buffalo 6-1-1 +8.8

Kansas 6-1-1 +9.4

Syracuse 5-1 +8.9

TCU 5-1-1 +8.4

Best OVER teams with margin:

Memphis 7-1 +7.8 points per game

Oklahoma St 6-1 +11.9

Louisiana Tech 6-1 +11.1

Houston 6-1 +7.6

Arkansas 6-1 +7.4

Rice 6-1 +6.1

UCLA 6-1 +3.6

Washington 6-1-1 +7.7

Wisconsin 6 straight OVER by 11.5 ppg.

Worst ATS teams with cover margin:

Miami, FL 1-6 -11.7 points per game.

Boston College 1-6 -6.7

Colorado 1-6 -5.4

BYU 6 straight ATS losses by 15.7 ppg.

Nevada 6 straight ATS losses by 10.3 ppg.

Best UNDER teams with margin:

Colorado St 7-0 -9.9 points per game

Georgia Tech 6-0-1 -12.7

Miami, OH 7-1 -9.25

Washington St 6-1 -10.4

Kentucky 6-1 -8.6

Marshall 6-1 -7.9

Missouri 6-1 -7.0

Georgia 6-1 -5.4

Virginia Tech 6-1 -3.7

San Jose St 5-1 -8.0

Virginia 5-1-1 -13.1

Misleading Finals

-Toledo had a 438-398 yard edge but were -5 in TO's in a 34-27 loss to Buffalo.

-Duke only had a 336-327 yard edge but were +6 in TO's in a shocking 45-21 upset over Miami, FL.

-Memphis had a 415-344 yard edge but were -4 in TO's at Tulane as they almost pulled the miraculous back-door (trailed 35-0 at halftime).

-East Carolina only had a 458-426 yard edge in a 34-13 win over UCF. The Pirates were +4 in TO's.

-Texas A&M had a 398-286 yard edge vs South Carolina but lost 30-24. The Aggies allowed a 100-yard kickoff return TD on the opening play and then gave SC two short fields off TO's and it was 17-0 early.

Bad Beats

-The total in the Bowling Green/Central Michigan game was 50.5. It was 20-10 with under 10 minutes left in the fourth quarter when BG got a 45-yard fumble return TD. CMU then got a TD with 6:13 left and then went for two and got it (now 27-18). With under a minute left and facing a 4th&5, BG threw a 31-yard TD pass when a first down would have allowed them to run out the clock.

Injuries/Personnel News

-BYU RB Christopher Brooks is out this week.

-BYU WR Kody Epps is out this week.

-Colorado QB Owen McCown very limited in Tuesday's practice.

-Georgia Southern WR Amare Jones will miss the rest of the season.

-Georgia Tech is preparing two backup quarterbacks to play at Florida State with Jeff Sims nursing a sprained foot. Key said Sims hasn't been ruled out against the Seminoles, but he is planning to use backups Zach Gibson -- and freshman Zach Pyron if Sims can't play. "I fully expect both Zachs will play in this game," Key said. "[Sims] is day-to-day, but you have to expect both scenarios."

-Kansas St QB Adrian Martinez did not practice Monday and is ? this week.

-Louisiana Tech QB Parker McNeil is ? this week. His backup Matthew Downing got hurt late in last week's game after replacing McNeil and is now out for the season. The Bulldogs could be down to a third string freshman QB in Landry Lyddy.

-Michigan TE Erick All is out for the season.

-Minnesota QB Tanner Morgan is questionable this week.

-SMU QB Tanner Mordecai is questionable this week.

-Stanford RB Casey Filkins is expected to miss a significant amount of time.

-Texas A&M head coach Jimbo Fisher said Monday that QB Haynes King should play this weekend against the Rebels. Fisher also announced on Monday that offensive linemen Bryce Foster, Aki Ogunbiyi and Jordan Spasojevic-Moko would all miss the rest of the season.

-Texas A&M has indefinitely suspended DB Denver Harris, OL PJ Williams and WR Chris Marshall.

-Texas Tech QB Tyler Shough will be available this week.

-Toledo QB Dequan Finn got hurt late in the Buffalo game. Keep an eye on his status this week. He's arguably the top player in the MAC.

-UL-Lafayette QB Chandler Fields will be available this week.

-UL-Lafayette RB Chris Smith is expected to play.

-USC WR Jordan Addison is questionable this week.

-USF will be down to a 3rd string QB in Katravis Marsh this week. He has started two games in his career.

-West Virginia RB Tony Mathis is out this week.

Recapping Week 8 Best Bets

We had our worst week of the season on these pages. College plays went 2-3 and the NFL went 0-3. We are still on a 36-24-1 best run this season. Keep in mind, this is a marathon, not a sprint!

2022 Combined Nationwide Football Newsletter Contest (Regular Season Only)

We are happy to provide you with the records, standings and plays used from the Power Sweep (2-4★ & Underdog), Gold Sheet (Key Releases), Power Plays (1-4.5★), Sports Reporter (Best Bets & Recommended), Winning Points (Best Bets & Preferred), Playbook (3-5★'s and Upset POW), Pointwise (Ratings 1-5) and Powers' Picks (1-4★'s)

College Newsletter	W	L	T	%	Net
Powers' Picks	22	14	1	61.11%	8
Winning Points	29	19	1	60.42%	10
Gold Sheet	20	14	0	58.82%	6
Sports Reporter	33	27	1	55.00%	6
Playbook	17	16	0	51.52%	1
Power Plays	53	57	1	48.18%	-4
Power Sweep	22	26	1	45.83%	-4
Pointwise	28	36	1	43.75%	-8
Combined	224	209	6	51.73%	15

NFL Newsletter	W	L	T	%	Net
Powers' Picks	14	10	0	58.33%	4
Sports Reporter	15	11	1	57.69%	4
Pointwise	18	14	1	56.25%	4
Winning Points	15	12	1	55.56%	3
Playbook	11	10	0	52.38%	1
Power Sweep	22	20	0	52.38%	2
Gold Sheet	12	11	1	52.17%	1
Power Plays	16	16	0	50.00%	0
Combined	123	104	4	54.19%	19

College/NFL Combined Newsletter	W	L	T	%	Net
Powers' Picks	36	24	1	60.00%	12
Winning Points	44	31	2	58.67%	13
Gold Sheet	32	25	1	56.14%	7
Sports Reporter	48	38	2	55.81%	10
Playbook	28	26	0	51.85%	2
Power Sweep	44	46	1	48.89%	-2
Power Plays	69	73	1	48.59%	-4
Pointwise	46	50	2	47.92%	-4
Combined	347	313	10	52.58%	34

CFB and NFL Schedules with Vegas and Brad Powers Lines Week 8 October 19-24

Thursday, Oct 27th	Time/TV	Open	Current	BP	Notes
101 Baltimore	8:15	44	-1	-1	
102 Tampa Bay	Prime	-3	45.5	43	
103 Virginia Tech	7:30	39.5	39.5	40	
104 NC State	ESPN	-12	-13.5	-12	
105 UL-Lafayette	7:30	-2	43	45	
106 Southern Miss	ESPN2	43.5	-1	-1	
107 Utah	10:00	-8	-7	-8	
108 Washington St	FS1	56.5	55	54	
Friday, Oct 28th	Time/TV	Open	Current	BP	Notes
111 East Carolina	8:00	57.5	62	61	
112 BYU	ESPN2	-3	-3	-5	
113 Louisiana Tech	8:00	-9	-6.5	-8	
114 FIU	CBSSN	53.5	57	58	
Saturday, Oct 29th	Time/TV	Open	Current	BP	Notes
117 Illinois	3:30	-5	-7.5	-9	
118 Nebraska	ABC	56.5	50.5	49	
119 Boston College	12:00	-10	-7.5	-10	
120 Connecticut	CBSSN	46.5	44.5	46	
121 Coastal Carolina	7:00	-1	55.5	52	
122 Marshall	NFLN	52.5	-2.5	-4	
123 New Mexico St	3:30	-3	-2	-3	
124 Massachusetts	ESPN3	36.5	39	41	
125 Miami, OH	12:00	-10	-8.5	-9	
126 Akron	ESPN+	46.5	48.5	49	
127 Missouri	4:00	48.5	46.5	47	
128 South Carolina	SECN	-5	-4	-1	
129 Kentucky	7:00	64.5	62.5	60	
130 Tennessee	ESPN	-11	-12.5	-12	
131 TCU	12:00	-7	-7.5	-7	
132 West Virginia	ESPN	70.5	69	69	
133 Georgia Tech	12:00	50.5	47.5	47	
134 Florida St	ACCN	-18	-24	-25	
135 Ohio St	12:00	-15	-15.5	-15	
136 Penn St	FOX	61.5	61	59	
137 Wake Forest	3:30	-5	-3.5	-1	
138 Louisville	ACCN	69.5	64	61	
139 Notre Dame	12:00	-2	48	49	
140 Syracuse	ABC	45.5	-2.5	-3	
141 Michigan St	7:30	51.5	55	54	
142 Michigan	ABC	-21	-23	-20	
143 Miami, FL	12:30	-3	-2	-5	
144 Virginia	ESPN3	46.5	48	47	
145 Cincinnati	3:30	-2	56	57	
146 UCF	ESPN	52.5	PK	-3	
147 Northwestern	3:30	31.5	37.5	39	
148 Iowa	ESPN2	-9	-11	-13	
149 Toledo	12:00	-10	-7	-6	
150 Eastern Michigan	ESPNU	61.5	55.5	56	
151 Old Dominion	3:00	59.5	55.5	57	
152 Georgia St	ESPN+	-6	-3.5	-5	
153 Pittsburgh	8:00	59.5	64.5	65	
154 North Carolina	ACCN	-2	-3	-1	
155 Rutgers	2:30	37.5	40.5	43	
156 Minnesota	BTN	-10	-14	-15	
157 South Alabama	4:00	-11	-10	-9	
158 Arkansas St	ESPNU	55.5	55.5	53	
159 Oklahoma	12:00	-1	-1	55	
160 Iowa St	FS1	57.5	56	-1	
161 Arizona St	7:30	-11	-13.5	-12	
162 Colorado	ESPNU	45.5	46.5	50	
163 Colorado St	7:00	46.5	43	45	
164 Boise St	FS1	-25	-27	-27	
165 Charlotte	2:00	55.5	59.5	63	
166 Rice	ESPN3	-14	-16.5	-15	

Saturday, Oct 29th	Time/TV	Open	Current	BP	Notes
167 USC	7:00	-14	-15.5	-15	
168 Arizona	P12N	73.5	76.5	73	
169 San Diego St	10:30	38.5	40.5	43	
170 Fresno St	FS1	-7	-8.5	-9	
171 Stanford	10:30	64.5	66.5	60	
172 UCLA	ESPN	-15	-16.5	-16	
173 Oregon	3:30	-12	-17	-16	
174 California	FS1	56.5	58	58	
175 USF	12:00	57.5	60.5	58	
176 Houston	ESPN2	-19	-17.5	-18	
177 SMU	3:30	-4	-2.5	-2	
178 Tulsa	ESPN+	66.5	64	64	
179 Oklahoma St	3:30	-2	56	59	
180 Kansas St	FOX	57.5	-1.5	-1	
181 Baylor	7:30	-1	62.5	64	
182 Texas Tech	ESPN2	61.5	-2.5	-4	
183 Ole Miss	7:30	-3	-2.5	55	
184 Texas A&M	SECN	59.5	55	-1	
185 Arkansas	12:00	-5	-3.5	-2	
186 Auburn	SECN	56.5	62	58	
187 Temple	3:30	33.5	40.5	43	
188 Navy	CBSSN	-13	-13.5	-11	
189 North Texas	3:30	74.5	70	68	
190 Western Kentucky		-11	-10	-8	
191 Florida	3:30	51.5	56.5	54	
192 † Georgia	CBS	-21	-22.5	-22	
193 Wyoming	12:00a	-10	-10.5	-11	
194 Hawaii		48.5	50.5	45	
195 UAB	7:00	-5	-5.5	-6	
196 Florida Atlantic	CBSSN	49.5	46.5	52	
197 Middle Tennessee	9:00	56.5	52	54	
198 UTEP	ESPN+	-1	-1.5	-2	
199 Nevada	10:30	42.5	44.5	43	
200 San Jose St	CBSSN	-24	-24.5	-23	
Sunday, Oct 30th	Time/TV	Open	Current	BP	Notes
251 Denver	9:30a	40	39.5	38	
252 † Jacksonville	ESPN+	-3	-2.5	-2	
253 Chicago	1:00	43	42	39	
254 Dallas	FOX	-10	-9.5	-9	
255 Las Vegas	1:00	44	-1.5	51	
256 New Orleans	CBS	PK	49.5	-1	
257 Carolina	1:00	41	41.5	43	
258 Atlanta	FOX	-6.5	-4.5	-3	
259 Pittsburgh	1:00	44	43	44	
260 Philadelphia	CBS	-9.5	-10.5	-10	
261 Miami	1:00	-3	-3.5	-6	
262 Detroit	CBS	48.5	51.5	52	
263 Arizona	1:00	47.5	49	50	
264 Minnesota	FOX	-6.5	-3.5	-2	
265 New England	1:00	-1	-1.5	-3	
266 N.Y. Jets	CBS	40	40.5	43	
267 Tennessee	4:05	-3.5	-2	-2	
268 Houston	CBS	41	40.5	40	
269 N.Y. Giants	4:25	43	45	45	
270 Seattle	FOX	-1.5	-3	-3	
271 Washington	4:25	42.5	39.5	39	
272 Indianapolis	FOX	-6	-3	-1	
273 San Francisco	4:25	40	-1.5	-1	
274 L.A. Rams	FOX	-2.5	43	41	
275 Green Bay	5:20	48	47.5	49	
276 Buffalo	NBC	-8	-11	-11	
Monday, Oct 31st	Time/TV	Open	Current	BP	Notes
277 Cincinnati	8:15	-2.5	-3.5	-3	
278 Cleveland	ESPN	45	47	47	

4★ = BEST
3★ = BETTER
2★ = GOOD
1★ = FAIR

THE POWERS' PACK

- 3★ **Missouri (+4) over SOUTH CAROLINA**
- 2★ **LOUISVILLE (+3.5) over Wake Forest**
- 2★ **CENTRAL FLORIDA (PK) over Cincinnati**
- 2★ **TEXAS TECH (-2.5) over Baylor**
- 2★ **Michigan St (+23) over MICHIGAN**

Games in Rotation Order

Thursday, October 27th

NC STATE 26 Virginia Tech 14. NC State QB Devin Leary is out for the season and backup Jack Chambers (24 of 44 so far) doesn't inspire much confidence to lay double-digits vs an average VT defense. That's actually a compliment for VT's D considering how bad their offense has been this year. Pass for now.

SOUTHERN MISS 23 UL-Lafayette 22. Southern Miss was a team we identified as much improved in the summer and so far they've lived up to expectations. ULL was a team we thought would take a step back but in recent weeks, they've been playing much better (3 straight covers). ULL is a little bit better statistically but SM has played the tougher schedule. Lean OVER.

Utah 31 WASHINGTON ST 23. This is one of the better Thursday Night games we've had this year (including the NFL). Both teams come in off a bye. Utah got the emotional win over USC in their last game while Wash St has lost two straight. Early week money is on Washington St but we'd lean with Utah at -7.

Friday, October 28th

BYU 33 East Carolina 28. The Cougars have failed to cover 6 straight games by an average of 15.8 points per game. Their leading rusher Christopher Brooks and leading receiver Kody Epps will miss this game. BYU was smashed by Liberty last Saturday including a 300-71 rushing yard deficit. We're backing ECU right? No. We don't like the spot here for ECU traveling across country to elevation on a short week. ECU also was +4 TO's last week vs UCF. We bet BYU -3.

Louisiana Tech 33 FIU 25. LT starting QB Parker McNeil is ? after getting hurt early in last week's game. His backup Matthew Downing also got hurt late in last week's game after replacing McNeil and is now out for the season. The Bulldogs could be down to a third string freshman QB in Landry Lyddy. Meanwhile, FIU has pulled two big upsets in recent weeks including vs Charlotte last Saturday (34-15 as 14-point underdogs). If McNeil plays, we like LT, if he doesn't, we're passing.

Saturday, October 29th

Illinois 29 NEBRASKA 20. Both teams come in off a bye. Illinois shockingly comes in as the Big Ten West favorites. The only team we've upgraded more this season is Duke. The Illini have the top defense in the country ranking No. 1 in yards per play (3.78), No. 1 in yards per game (221.1) and No. 1 in points per game (8.9). They are +195 ypg (No. 4) on the season while Nebraska has been outgained by 48 ypg (No. 101). We bet Illinois -6 and still lean that way.

Boston College 28 CONNECTICUT 18. This line seems really short to us. Yes, BC has struggled this year at 1-6 ATS failing to cover by 6.7 points per game. However, they've played the much tougher schedule (No. 35 vs No. 79) and are slightly better statistically. You have to give credit to the job Jim Mora, Jr has done in year one for UConn but the Eagles need a feel-good win.

MARSHALL 28 Coastal Carolina 24. Which Marshall team is going to show up here? The line seems short to us. Marshall has played the toughest schedule (No. 101 vs No. 126) and is better in ypp margin (No. 50 vs No. 62), ypg margin (No. 26 vs No. 53) and ppg margin (No. 35 vs No. 64). Is it because QB Colombi is questionable? Cam Fancher started last week and had been splitting reps. While Coastal is off a bye, we ARE Marshall! here.

New Mexico St 22 MASSACHUSETTS 19. Tough finding a worse FBS match-up with a pair of bottom 5 teams. It's tough laying points on the road with a bad team but New Mexico St is the statistically superior team at -0.7 in yards per play margin (No. 106) vs UMass' -2.2 (No. 130). We lean with the Aggies and the OVER.

Miami, Oh 29 AKRON 20. While the final score would not indicate it (Miami lost outright to Western Michigan as TD favorites), the Redhawks did see the return of starting QB Brett Gabbert (21 of 38 for 222 yards). Gabbert hadn't played since the opener. That makes Miami under-valued and even with playing a backup QB most of the season, they are the better statistically including ypp margin (No. 84 vs No. 129), ypg margin (No. 99 vs No. 121) and ppg margin (No. 101 vs No. 128).

3★ Missouri (plus the points) SOUTH CAROLINA 24 Missouri 23. We think South Carolina is overrated despite their 4-game win streak. They upset a Kentucky team that was playing without star QB Will Levis. Last week they got out to a 17-0 start vs Texas A&M thanks to a 100-yard kickoff return TD and a couple short fields after Aggies' turnovers. South Carolina was outgained by more than 100 yards despite the upset win. Meanwhile, Missouri is under-valued. The Tigers should have upset Auburn on the road (missed chip-shot FG and fumble in the end zone). They nearly upset Georgia and outgained Florida 370-286. Anything above "3" is worth a look for Mizzou.

TENNESSEE 36 Kentucky 24. Tennessee is 30-3 SU and 24-8-1 ATS since 1989 vs Kentucky! Kentucky comes in fresh off a bye and the Wildcats had their best rushing performance of the season in their last game (239 yards vs Miss St). How patient can Kentucky be in the run game? Tennessee's rush defense is better than expected allowing 91 rushing ypg. However, we think it's more of a product of opponent's offenses having to play catch-up and abandoning the run. Tennessee has the No. 1 scoring offense in the country averaging 50 ppg and the No. 1 total offense averaging 571 ypg. However, we lean with the UNDER.

Tcu 38 WEST VIRGINIA 31. A really tough spot here for TCU after 5 straight tough games including 4 straight wins over ranked opponents. The Horned Frogs rallied from an 18-point deficit last week vs Kansas St but benefited from facing the backup QB and also the 3rd string QB (for a few series). In 3 of their last 4 games, TCU has seen the opposing starting QB go down to injury. We would love West Vir-

ginia here but their defense has allowed 590 and 594 yards in their last two games. **FLORIDA ST 36 Georgia Tech 11.** VIP customers got a top play on Florida St -20.5, the line is now -24. We think FSU is underrated as they rank No. 8 in yards per play margin despite playing the No. 13 toughest schedule. The Seminoles are off a bye and could be facing a backup QB here. GT starting QB Jeff Sims is nursing a sprained foot. Interim coach Brent Key said Sims hasn't been ruled out against the Seminoles, but he is planning to use backups Zach Gibson -- and freshman Zach Pyron if Sims can't play. "I fully expect both Zachs will play in this game." Did you see Zach Gibson's play vs Virginia last week (10 of 25 for 99 yards)? Yikes!

Ohio St 37 PENN ST 22. Ohio St has won 9 of the last 10 meetings. However, Penn St has covered 5 of the last 6 and the last 6 meetings have been decided by 13 points or less and have been decided by an average of just 6.3 ppg. Seems like an easy Penn St call right? Not so fast. Ohio St is No. 1 in the country in yards per play margin (+3.56). While Ohio St has one of the best offenses in the country, the story of their season has been their defensive improvements. Under new DC Jim Knowles, OSU's defense is allowing 8 ppg and 133 ypg less than last year. There will be not be a "White Out" here with a Noon kickoff time. We lean UNDER.

2★ Louisville (plus the points) Wake Forest 31 LOUISVILLE 30. We think Louisville is a little underrated as they played a couple games without QB Malik Cunningham. Despite playing the tougher schedule than Wake Forest (No. 44 vs No. 83 in Sagarin's SOS), Louisville is +63 ypg while Wake is +64 ypg. We also think Louisville has the better defense. At "+3.5" or more, Louisville is a take.

SYRACUSE 26 Notre Dame 23. We were a little surprised to see Notre Dame open up favorite in this game. Syracuse is better in ypp margin at +1.76 (No. 11) vs ND's +0.38 (No. 55). The Orange are also better in ypp margin and ppg margin but ND has played the tougher schedule. Syracuse did have a misleading loss vs Clemson last week as they were outgained by 159 yards but were +3 TO's including 90-yard fumble return TD. Dino Babers Sean Tucker (696 rush yards) needs to get the football more this week...only 5 carries last week! We think they ride him to a big win in front of a "sold out" crowd.

2★ Michigan St (plus the points) MICHIGAN 37 Michigan St 17. Michigan St is 12-2 ATS and 10-4 SU vs Michigan since Mike Hart's famous "Little Brother" comments. Every year we hear about how Michigan is finally going to take care of their "Little Brother" and every year it's the same story. Only once in the last 19 meetings has Michigan been able to beat Michigan St by more than 3 TD's. Both teams are off a bye. We liked what we saw from Michigan St in their last game, an upset over Wisconsin. That was their best performance of the season. They are healthier here.

Miami, FL 26 VIRGINIA 21. Miami is 0-6 ATS vs FBS teams this year failing to cover by an average of 14.9 points per game. Virginia isn't much better as the Cavaliers were 1-5 ATS prior to last week's "upset" at Georgia Tech. It looks like Miami QB Tyler Van Dyke will be out for this game. However, it can't get any worse for Miami's offense after turning it over 8 times last week (most by a Power 5 team in more than a decade).

2★ UCF 30 Cincinnati 27. Cincinnati has won 6 straight games but something isn't right about this team as they are just 1-4-1 ATS vs FBS opponents this year. Cincy has not done well vs mobile QB's this year allowing 224 rush yards to Arkansas and USF. UCF QB John Rhys Plumlee has 492 rush yards (leads team). UCF is off a misleading 21-point loss to East Carolina last week as they were -4 in TO's. The two teams have similar strengths of schedule but UCF is better in ypp and ppg margins. This should be the best Group of 5 home atmosphere all season.

IOWA 26 Northwestern 13. This total opened 31.5 on Sunday. Yes, we know it's very tough betting an OVER with these two team's offenses but that would've been one of the lowest totals in modern FBS history. Northwestern is also No. 6 in plays per game. This feels like a "get-right" game for Iowa as Kirk Ferentz and his OC son Brian have deservedly taken a lot of heat this year. Lean Iowa.

Toledo 31 EASTERN MICHIGAN 25. Keep an eye on the status of Toledo QB Dequan Finn who got hurt late in last week's game vs Buffalo. Toledo head coach Jason Candle used the words "wait-and-see" and "to be determined". Doesn't sound promising. We lean EMU.

GEORGIA ST 31 Old Dominion 26. Our power ratings like Georgia St a little bit better than the market in this game. Prior the blowout loss to Appalachian St last Wednesday, they had back-to-back solid wins over Army and Georgia Southern. The same Georgia Southern team that beat Old Dominion last week.

NORTH CAROLINA 33 Pittsburgh 32. Our power ratings like Pittsburgh here. They are +82 ypg on the season while North Carolina is +30 ypg. The Tar Heels do come in off a bye but Pitt has the far superior defense allowing 334 ypg (No. 27) vs North Carolina 476 ypg (No. 126). NC gets the win but Pitt takes the money.

MINNESOTA 29 Rutgers 14. What happened to the Minnesota defense the last couple of weeks? They should "get right" here vs a Rutgers offense that ranks No. 113 in total offense. Despite the status of QB Tanner Morgan (we think he plays), the early money is on Minnesota here.

South Alabama 31 ARKANSAS ST 22. Arkansas St QB James Blackman will play here after missing last week's loss to UL-Lafayette. The Red Wolves are banged up though at several other spots. USA has the big edges in ypg (+115 vs -60) and ypp margins (No. 36 vs No. 119). However, Arkansas St has played the tougher schedule.

IOWA ST 28 Oklahoma 27. Both teams off a bye. Despite playing a tougher schedule (No. 15 vs No. 24), Iowa St is a little bit better statistically in ppg margin (+7.8 vs +2.9) and ypg margin (+80 vs +25). We think Oklahoma is favored by 1-point because of their name brand and not necessarily because of their performance this year. They did a lot of things right vs Kansas but Iowa St is close to a breakout win **Arizona St 31 COLORADO 19.** Arizona St has covered 3 straight games with an interim coach and came close to beating Stanford last week. Meanwhile, Colorado also has an interim coach but were blown out last week. The Buffs remain dead last in ypp, ypg and ppg margins. We lean OVER.

BOISE ST 36 Colorado St 9. Boise St won outright as our top play of the week on these pages last week. While much improved over the last 3 games, we're not wild about laying nearly 4 TD's against a Colorado St team that has seen all 7 of their games go UNDER the total.

RICE 39 Charlotte 24. Charlotte fired their head coach Will Healy after last week's shocking 34-15 loss to FIU as 14-point favorites. Offensive line coach Pete Rosso-mando will serve as interim head coach. Meanwhile, Rice has surprised this year at 4-3 SU and 5-2 ATS. They should find success vs a Charlotte defense that ranks dead last in the country in ypg, ypp and ppg allowed. Lean OVER.

Usc 44 ARIZONA 29. Both team come in off a bye. Both teams have exceeded expectations this year. USC is off their first loss of the season but they covered in Utah. Keep an eye on the status of USC WR Jordan Addison. This is one of the highest totals of the season but we lean UNDER.

FRESNO ST 26 San Diego St 17. Fresno St has turned their season around with a couple of impressive wins. They have played the tougher schedule (No. 59 vs No. 103) and are the far superior team in ypp margin (No. 55 vs No. 105) and ypg margin (No. 57 vs No. 113). That's despite playing with a backup QB. We're hearing that Jake Haener is close to returning. Lean OVER.

UCLA 38 Stanford 22. Stanford has played the toughest schedule in the country according to Jeff Sagarin and they are basically a Oregon St "Hail Mary" away from being 4-3 SU. However, the Cardinal are really banged up as they will be down to a 3rd-string RB and their top WR remains out. We lean UNDER.

Oregon 37 CALIFORNIA 21. The Ducks have won 6 straight and are now No. 12 in ypg margin (+133). California has lost 3 straight and rank No. 93 in ypg margin (-21.5). One of the bigger line movers of the week so far with Oregon opening up -12 and are up to -17 (we bet Oregon -13 on Sunday). We don't see value now.

HOUSTON 38 South Florida 20. Note that USF will be playing with a 3rd string QB here with Gerry Bohanon out for the year and Timmy McClain transferring. Katravis Marsh has started two games in his career. Meanwhile, Houston has turned their season around with back-to-back wins. We're not involved.

Smu 33 TULSA 31. SMU QB Tanner Mordecai is questionable for this game but Preston Stone was very highly-rated out of high school and moved the football last week vs Cincinnati. It's a game we're not involved in.

KANSAS ST 30 Oklahoma St 29. Hey look another game with QB injury question marks. Kansas St QB Adrian Martinez did not practice on Monday after getting hurt early vs TCU. The Wildcats initially moved the ball with Will Howard but then he got banged up (will be okay here). Howard does have 10 starts in his career. Speaking of banged up, Oklahoma St was missing a half dozen starters but still pulled the upset over Texas last week. This is the 3rd straight week the market has moved against them. We lean OVER.

2★ TEXAS TECH 34 Baylor 30. We think Texas Tech is one of the most underrated teams in the country. Despite playing the No. 8 toughest schedule in the country, they are No. 9 in ypg margin at +145. And that's with playing 3 different QB's. All 3 of those QB's are healthy now. We also like this Baylor team that is Top 25 in ypp and ypg margins but we think this line should be at least 3.

TEXAS A&M 28 Ole Miss 27. Texas A&M is an absolute mess right now. Three different OL were announced out for the year. Three freshman were suspended. They're dealing with a QB injury (Haynes King should play here). And head coach Jimbo Fisher is deservedly taking heat. You can't bet them right? Well, we did at "+3" on Sunday night. Ole Miss is overrated because of a weak strength of schedule. Also A&M had a misleading final last week (see page 1).

Arkansas 30 AUBURN 28. Both teams off a bye. Both have played brutal schedules so far as both rank in the Top 10 in terms of difficulty. We can understand the early money on Auburn when they have the better ypp margin (+0.2 vs -0.1). However, Arkansas has the better coaching situation. Lean UNDER for us.

NAVY 27 Temple 16. This total opened 33.5 and someone beat us to the punch as we bet OVER 35.5. It's now 40.5. As far as the side goes, Navy is not the type of team you want to you want to lay points with (see Delaware game) especially considering Temple has the better ypp margin.

WESTERN KENTUCKY 38 North Texas 30. WKU is in the Top 25 in ypp, ypg and ppg margins. They have the much better defense (No. 17 vs No. 111 in yards per play allowed). However, North Texas impressed us last week staying within the number vs UTSA. That's 4 straight covers for them. Make it 5.

† Georgia 38 Florida 16. @TIAA Bank Field in Jacksonville, FL. This is the largest favorite role ever in the series for Georgia! It is deserved when you start looking at some of the discrepancies including ypg margin with Georgia No. 1 (+280) and Florida No. 82 (+0.8). How does Florida have success offensively especially with a limited pass game (Anthony Richardson 6-7 ratio this year). We don't see much value. Lean UNDER.

Wyoming 28 HAWAII 17. We like the UNDER here. Hawaii is No. 89 in plays per game while Wyoming is No. 113. We like what we've seen from Hawaii's defense since the bye week allowing just 16.3 ppg the last 3 weeks.

Uab 29 FLORIDA ATLANTIC 23. Make sure you check the status of UAB QB Dylan Hopkins who is in concussion protocol. The Blazers are the much better team statistically ranking No. 7 in ypp margin while FAU is No. 92. Is Willie Taggart on the hot seat yet? The Owls are 9-18-1 ATS under his watch.

UTEP 28 Middle Tennessee 26. After pulling off the biggest upset of the season vs Miami, FL as 25.5-point underdogs, the Blue Raiders are 0-3 ATS failing to cover by 12.7 ppg. UTEP is surprisingly better in ypp margin although MT has played the tougher schedule. We didn't bet the game yet.

SAN JOSE ST 33 Nevada 10. San Jose St saw last week's game vs New Mexico St cancelled. Sadly, Camdan McWright, a freshman player was killed after crashing into a school bus while riding a scooter. We bet Nevada +25.5.

Tuesday, November 1st

Ball St at Kent St. As of press-time there are no lines out for this game. Our current power ratings have Kent St by 5.3 if Collin Schlee returns at QB.

Buffalo at Ohio. As of press-time there are no lines out for this game. Our current power ratings have Buffalo by 1.6. Buffalo has covered 5 straight games by 15.9 ppg while Ohio is -84 ypg.

Pics of Brad's Bets vs Circa Openers

62 pending, total cost \$33,990.00

Sports Bet Placed Oct 23, 11:02 AM Oct-29 NCAA FOOTBALL POWER 5 [131] TCU -7-110	\$550.00	>	Sports Bet Placed Oct 23, 11:05 AM Oct-29 NCAA FOOTBALL POWER 5 [165] RUTGERS OV 39-110	\$1,100.00	>
Sports Bet Placed Oct 23, 11:02 AM Oct-29 NCAA FOOTBALL GROUP OF 5 [130] TENNESSEE UN 64%-110	\$550.00	>	Sports Bet Placed Oct 23, 11:05 AM Oct-29 NCAA FOOTBALL POWER 5 [156] MINNESOTA -12-110	\$1,100.00	>
Sports Bet Placed Oct 23, 11:02 AM Oct-29 NCAA FOOTBALL GROUP OF 5 [125] MIAMI OH OV 46%-110	\$550.00	>	Sports Bet Placed Oct 23, 11:04 AM Oct-29 NCAA FOOTBALL POWER 5 [148] IOWA -10%-110	\$550.00	>
Sports Bet Placed Oct 23, 11:01 AM Oct-29 NCAA FOOTBALL GROUP OF 5 [123] NEW MEX ST OV 36%-110	\$550.00	>	Sports Bet Placed Oct 23, 11:04 AM Oct-29 NCAA FOOTBALL POWER 5 [147] N' WESTERN OV 31%-110	\$550.00	>
Sports Bet Placed Oct 23, 11:01 AM Oct-29 NCAA FOOTBALL GROUP OF 5 [122] MARSHALL -1-110	\$550.00	>	Sports Bet Placed Oct 23, 11:04 AM Oct-29 NCAA FOOTBALL GROUP OF 5 [145] CINCINNATI OV 55-110	\$550.00	>
Sports Bet Placed Oct 23, 11:01 AM Oct-29 NCAA FOOTBALL POWER 5 [119] BOSTON COLL -9-110	\$550.00	>	Sports Bet Placed Oct 23, 11:03 AM Oct-29 NCAA FOOTBALL POWER 5 [143] MIAMI FL -2-110	\$1,100.00	>
Sports Bet Placed Oct 23, 11:01 AM Oct-29 NCAA FOOTBALL POWER 5 [118] NEBRASKA UN 54-110	\$1,100.00	>	Sports Bet Placed Oct 23, 11:03 AM Oct-29 NCAA FOOTBALL POWER 5 [140] SYRACUSE -1-110	\$1,100.00	>
Sports Bet Placed Oct 23, 11:01 AM Oct-29 NCAA FOOTBALL POWER 5 [117] ILLINOIS -6-110	\$1,100.00	>	Sports Bet Placed Oct 23, 11:03 AM Oct-29 NCAA FOOTBALL POWER 5 [138] LOUISVILLE UN 66%-110	\$1,100.00	>
Sports Bet Placed Oct 23, 11:07 AM Oct-29 NCAA FOOTBALL POWER 5 [172] UCLA UN 64%-110	\$550.00	>	Sports Bet Placed Oct 23, 11:14 AM Oct-29 NCAA FOOTBALL POWER 5 [127] MISSOURI OV 47-110	\$550.00	>
Sports Bet Placed Oct 23, 11:06 AM Oct-29 NCAA FOOTBALL GROUP OF 5 [169] SD STATE OV 38%-110	\$550.00	>	Sports Bet Placed Oct 23, 11:13 AM Oct-29 NCAA FOOTBALL GROUP OF 5 [112] BYU -3-110	\$550.00	>
Sports Bet Placed Oct 23, 11:06 AM Oct-29 NCAA FOOTBALL GROUP OF 5 [170] FRESNO ST -7%-110	\$550.00	>	Sports Bet Placed Oct 23, 11:09 AM Oct-29 NCAA FOOTBALL GROUP OF 5 [199] NEVADA +25%-110	\$550.00	>
Sports Bet Placed Oct 23, 11:06 AM Oct-29 NCAA FOOTBALL POWER 5 [168] ARIZONA UN 76%-110	\$550.00	>	Sports Bet Placed Oct 23, 11:09 AM Oct-29 NCAA FOOTBALL GROUP OF 5 [195] UAB -5-110	\$550.00	>
Sports Bet Placed Oct 23, 11:06 AM Oct-29 NCAA FOOTBALL GROUP OF 5 [165] CHARLOTTE OV 58-110	\$550.00	>	Sports Bet Placed Oct 23, 11:08 AM Oct-29 NCAA FOOTBALL GROUP OF 5 [187] TEMPLE OV 35%-110	\$550.00	>
Sports Bet Placed Oct 23, 11:06 AM Oct-29 NCAA FOOTBALL GROUP OF 5 [164] BOISE ST -26%-110	\$550.00	>	Sports Bet Placed Oct 23, 11:08 AM Oct-29 NCAA FOOTBALL POWER 5 [182] TEXAS TECH -1-110	\$1,100.00	>
Sports Bet Placed Oct 23, 11:05 AM Oct-29 NCAA FOOTBALL POWER 5 [161] ARIZONA ST OV 45%-110	\$550.00	>	Sports Bet Placed Oct 23, 11:07 AM Oct-29 NCAA FOOTBALL POWER 5 [173] OREGON -13-110	\$1,100.00	>
Sports Bet Placed Oct 23, 11:05 AM Oct-29 NCAA FOOTBALL GROUP OF 5 [158] ARKANSAS ST +10-110	\$550.00	>	Sports Bet Placed Oct 23, 11:20 AM Oct-29 NCAA FOOTBALL GROUP OF 5 [195] UAB OV 47%-110	\$550.00	>
			Sports Bet Placed Oct 23, 11:19 AM Oct-29 NCAA FOOTBALL GROUP OF 5 [194] HAWAII UN 51-110	\$550.00	>
			Sports Bet Placed Oct 23, 11:19 AM Oct-29 NCAA FOOTBALL POWER 5 at JACKSONVILLE, FL [192] GEORGIA UN 56%-110	\$550.00	>
			Sports Bet Placed Oct 23, 11:19 AM Oct-29 NCAA FOOTBALL POWER 5 [186] AUBURN UN 62%-110	\$550.00	>
			Sports Bet Placed Oct 23, 11:18 AM Oct-29 NCAA FOOTBALL GROUP OF 5 [178] TULSA UN 68%-110	\$550.00	>
			Sports Bet Placed Oct 23, 11:16 AM Oct-29 NCAA FOOTBALL POWER 5 [140] SYRACUSE -1-110	\$550.00	>

Week 9 College Football Power Ratings (Vegas Ratings Not AP Poll Style)

Rk	Team	8/24	10/26	Diff	Rk	Team	8/24	10/26	Diff	Rk	Team	8/24	10/26	Diff
1.	Ohio State	96.70	99.70	+3.0	50.	Washington State	65.55	71.05	+5.5	99.	Georgia Tech	61.18	58.18	-3.0
2.	Georgia	94.64	97.14	+2.5	51.	Iowa	77.23	70.73	-6.5	100.	Kent State	55.67	58.17	+2.5
3.	Alabama	97.97	94.97	-3.0	52.	BYU	78.99	70.49	-8.5	101.	Old Dominion	58.65	58.15	-0.5
4.	Michigan	86.42	88.92	+2.5	53.	Missouri	68.41	70.41	+2.0	102.	Wyoming	55.35	57.85	+2.5
5.	Tennessee	81.74	87.24	+5.5	54.	SMU	70.70	70.20	-0.5	103.	San Diego State	65.83	57.83	-8.0
6.	Clemson	87.27	85.27	-2.0	55.	Miami (FL)	81.82	69.82	-12.0	104.	UTEP	55.82	57.32	+1.5
7.	Texas	80.36	84.36	+4.0	56.	Appalachian St	69.84	69.34	-0.5	105.	UNLV	54.84	56.84	+2.0
8.	Oregon	79.43	82.93	+3.5	57.	Michigan State	79.30	69.30	-10.0	106.	Miami (OH)	61.66	56.66	-5.0
9.	USC	78.93	82.43	+3.5	58.	East Carolina	66.26	69.26	+3.0	107.	Eastern Michigan	55.24	56.24	+1.0
10.	Utah	83.71	81.71	-2.0	59.	Houston	73.21	68.71	-4.5	108.	Middle Tennessee	56.59	56.09	-0.5
11.	TCU	73.20	80.70	+7.5	60.	Air Force	70.65	68.65	-2.0	109.	Ohio	55.31	55.81	+0.5
12.	Penn State	80.99	80.49	-0.5	61.	UTSA	66.42	67.92	+1.5	110.	Central Michigan	61.76	55.76	-6.0
13.	LSU	78.93	80.43	+1.5	62.	Troy	61.26	67.76	+6.5	111.	Utah State	64.58	55.58	-9.0
14.	Mississippi State	79.19	80.19	+1.0	63.	Nebraska	76.48	67.48	-9.0	112.	USF	63.53	55.03	-8.5
15.	Arkansas	79.82	79.32	-0.5	64.	Liberty	65.90	67.39	+1.5	113.	Ball State	52.66	54.66	+2.0
16.	Ole Miss	79.65	79.15	-0.5	65.	Kansas	59.33	67.33	+8.0	114.	Arkansas State	50.79	53.79	+3.0
17.	Oklahoma State	80.27	78.77	-1.5	66.	Western Kentucky	64.51	67.01	+2.5	115.	UL-Monroe	48.66	53.66	+5.0
18.	Wake Forest	70.13	78.63	+8.5	67.	Stanford	68.49	66.98	-1.5	116.	Western Michigan	60.11	53.61	-6.5
19.	Florida State	76.02	78.52	+2.5	68.	UAB	68.35	66.85	-1.5	117.	Texas State	51.05	53.55	+2.5
20.	Illinois	65.88	77.88	+12.0	69.	Arizona State	68.27	66.77	-1.5	118.	Bowling Green	53.10	52.89	-0.2
21.	Kentucky	78.61	77.61	-1.0	70.	San Jose State	59.12	66.62	+7.5	119.	Louisiana Tech	54.88	51.88	-3.0
22.	Oklahoma	83.51	77.51	-6.0	71.	Toledo	65.45	66.45	+1.0	120.	Colorado	61.19	51.69	-9.5
23.	UCLA	75.49	77.49	+2.0	72.	Duke	52.66	66.16	+13.5	121.	Temple	48.99	49.49	+0.5
24.	Cincinnati	77.87	77.37	-0.5	73.	Arizona	61.61	66.11	+4.5	122.	Colorado State	58.69	48.69	-10.0
25.	Texas Tech	70.81	77.31	+6.5	74.	South Alabama	55.79	65.79	+10.0	123.	New Mexico	48.75	47.75	-1.0
26.	Texas A&M	84.28	76.78	-7.5	75.	Memphis	67.15	65.65	-1.5	124.	Connecticut	43.40	47.40	+4.0
27.	Minnesota	77.16	76.66	-0.5	76.	Marshall	66.25	65.25	-1.0	125.	Nevada	54.73	46.73	-8.0
28.	Kansas State	75.64	76.64	+1.0	77.	Rutgers	63.26	64.76	+1.5	126.	Charlotte	53.15	46.15	-7.0
29.	Baylor	79.48	76.48	-3.0	78.	Indiana	66.13	64.62	-1.5	127.	Akron	46.96	45.96	-1.0
30.	Notre Dame	84.79	76.29	-8.5	79.	California	66.36	64.36	-2.0	128.	New Mexico St	43.46	44.46	+1.0
31.	Purdue	75.16	76.16	+1.0	80.	Tulsa	63.23	63.73	+0.5	129.	Hawaii	49.74	44.24	-5.5
32.	Wisconsin	80.61	76.11	-4.5	81.	Fresno State	71.52	63.52	-8.0	130.	FIU	41.22	40.72	-0.5
33.	Washington	73.19	75.69	+2.5	82.	Virginia Tech	66.50	63.50	-3.0	131.	Massachusetts	41.54	39.54	-2.0
34.	Syracuse	68.55	75.55	+7.0	83.	Coastal Carolina	63.54	62.54	-1.0	Biggest Gains From Start of Season		Biggest Losses From Start of Season		
35.	Iowa State	74.14	75.14	+1.0	84.	Virginia	69.73	62.23	-7.5	Duke	+13.5	Miami (FL)	-12.0	
36.	Oregon State	72.51	75.01	+2.5	85.	UL-Lafayette	64.88	61.88	-3.0	Illinois	+12.0	Michigan State	-10.0	
37.	Louisville	75.43	74.93	-0.5	86.	North Texas	59.09	61.59	+2.5	James Madison	+12.0	Colorado State	-10.0	
38.	Florida	76.80	74.80	-2.0	87.	Georgia State	65.05	61.55	-3.5	South Alabama	+10.0	Colorado	-9.5	
39.	UCF	74.61	74.61	0.0	88.	Army	66.13	61.13	-5.0	Wake Forest	+8.5	Nebraska	-9.0	
40.	Pittsburgh	79.06	74.06	-5.0	89.	Boston College	69.62	61.12	-8.5	Kansas	+8.0	Utah State	-9.0	
41.	NC State	80.50	73.00	-7.5	90.	Georgia Southern	55.36	60.86	+5.5	San Jose State	+7.5	USF	-8.5	
42.	South Carolina	73.58	72.58	-1.0	91.	Navy	59.38	60.38	+1.0	TCU	+7.5	Boston College	-8.5	
43.	Maryland	73.39	72.39	-1.0	92.	Florida Atlantic	58.39	59.89	+1.5	Rice	+7.5	BYU	-8.5	
44.	North Carolina	74.10	72.10	-2.0	93.	Vanderbilt	55.76	59.76	+4.0	Syracuse	+7.0	Notre Dame	-8.5	
45.	Boise State	74.62	71.62	-3.0	94.	Buffalo	56.67	59.67	+3.0	Troy	+6.5	San Diego State	-8.0	
46.	West Virginia	71.00	71.50	+0.5	95.	Northwestern	63.66	59.66	-4.0	Texas Tech	+6.5	Nevada	-8.0	
47.	James Madison	59.20	71.20	+12.0	96.	Southern Miss	57.65	59.15	+1.5	Washington St	+5.5	Fresno State	-8.0	
48.	Auburn	78.13	71.13	-7.0	97.	Northern Illinois	61.56	59.06	-2.5	Tennessee	+5.5			
49.	Tulane	66.09	71.09	+5.0	98.	Rice	51.45	58.95	+7.5	Ga Southern	+5.5			

Week 9 College Football Power Ratings by Conference

SEC			Big 12			Pac-12			Mountain West			CUSA		
Rk	Team	Rating	Rk	Team	Rating	Rk	Team	Rating	Rk	Team	Rating	Rk	Team	Rating
2.	Georgia	97.14	7.	Texas	84.36	8.	Oregon	82.93	45.	Boise State	71.62	61.	UTSA	67.92
3.	Alabama	94.97	11.	TCU	80.70	9.	USC	82.43	60.	Air Force	68.65	66.	Western Kentucky	67.01
5.	Tennessee	87.24	17.	Oklahoma State	78.77	10.	Utah	81.71	70.	San Jose State	66.62	68.	UAB	66.85
13.	LSU	80.43	22.	Oklahoma	77.51	23.	UCLA	77.49	81.	Fresno State	63.52	86.	North Texas	61.59
14.	Mississippi State	80.19	25.	Texas Tech	77.31	33.	Washington	75.69	102.	Wyoming	57.85	92.	Florida Atlantic	59.89
15.	Arkansas	79.32	28.	Kansas State	76.64	36.	Oregon State	75.01	103.	San Diego State	57.83	98.	Rice	58.95
16.	Ole Miss	79.15	29.	Baylor	76.48	50.	Washington State	71.05	105.	UNLV	56.84	104.	UTEP	57.32
21.	Kentucky	77.61	35.	Iowa State	75.14	67.	Stanford	66.98	111.	Utah State	55.58	108.	Middle Tennessee	56.09
26.	Texas A&M	76.78	46.	West Virginia	71.50	69.	Arizona State	66.77	122.	Colorado State	48.69	119.	Louisiana Tech	51.88
38.	Florida	74.80	65.	Kansas	67.33	73.	Arizona	66.11	123.	New Mexico	47.75	126.	Charlotte	46.15
42.	South Carolina	72.58	ACC			79.	California	64.36	125.	Nevada	46.73	130.	FIU	40.72
48.	Auburn	71.13	Rk Team			Rating			129.	Hawaii	44.24	Sun Belt		
53.	Missouri	70.41	6.	Clemson	85.27	120.	Colorado	51.69	MAC			Rk Team		
93.	Vanderbilt	59.76	18.	Wake Forest	78.63	American			Rk Team			Rating		
Big Ten			19.	Florida State	78.52	Rk Team			71.	Toledo	66.45	47.	James Madison	71.20
1.	Ohio State	99.70	34.	Syracuse	75.55	24.	Cincinnati	77.37	94.	Buffalo	59.67	56.	Appalachian State	69.34
4.	Michigan	88.92	37.	Louisville	74.93	39.	UCF	74.61	97.	Northern Illinois	59.06	62.	Troy	67.76
12.	Penn State	80.49	40.	Pittsburgh	74.06	49.	Tulane	71.09	100.	Kent State	58.17	74.	South Alabama	65.79
20.	Illinois	77.88	41.	NC State	73.00	54.	SMU	70.20	106.	Miami (OH)	56.66	76.	Marshall	65.25
27.	Minnesota	76.66	44.	North Carolina	72.10	58.	East Carolina	69.26	107.	Eastern Michigan	56.24	83.	Coastal Carolina	62.54
31.	Purdue	76.16	55.	Miami (FL)	69.82	59.	Houston	68.71	109.	Ohio	55.81	85.	UL-Lafayette	61.88
32.	Wisconsin	76.11	72.	Duke	66.16	75.	Memphis	65.65	110.	Central Michigan	55.76	87.	Georgia State	61.55
43.	Maryland	72.39	82.	Virginia Tech	63.50	80.	Tulsa	63.73	113.	Ball State	54.66	90.	Georgia Southern	60.86
51.	Iowa	70.73	84.	Virginia	62.23	91.	Navy	60.38	116.	Western Michigan	53.61	96.	Southern Miss	59.15
57.	Michigan State	69.30	89.	Boston College	61.12	112.	USF	55.03	118.	Bowling Green	52.89	101.	Old Dominion	58.15
63.	Nebraska	67.48	99.	Georgia Tech	58.18	121.	Temple	49.49	127.	Akron	45.96	114.	Arkansas State	53.79
77.	Rutgers	64.76										115.	UL-Monroe	53.66
78.	Indiana	64.62										117.	Texas State	53.55
95.	Northwestern	59.66												

Week 9 Computer Projected Lines for Every CFB Game

For the past six seasons we have posted computer projected lines for every game on Wednesday. **Games where there was of difference of more than 3 points saw our computer lines actually beat the Vegas line at a 421-355-12 (54%) clip! So far this season those games are 27-23-1.** That's pretty solid and actually better than our own handicapping in some seasons. Keep in mind, these computer lines don't take into consideration off-the-field factors like revenge or flat spots or if there are late-week injuries. They are basically a power-rating number difference between the two teams that also takes into consideration the home field advantage.

Of the 4 games where our computer is off more than 3 points compared to the Vegas line (highlighted), our favorite team this week to back would be **Texas A&M +2.5**.

The Comp column is the computer projected line and the Diff column is the difference between the Vegas line and the Computer line. "+" numbers in the difference column say back the underdog. "-" numbers in the difference column say back the favorite. Let us know if you have questions.

Thursday, Oct 27th	Line	Comp	Diff	Saturday, Oct 29th	Line	Comp	Diff
103 Virginia Tech				153 Pittsburgh			
104 NC State	-13.5	-12.5	+1.0	154 North Carolina	-3.0	-0.8	+2.2
105 UL-Lafayette				155 Rutgers			
106 Southern Miss	-1.0	+0.2	+1.2	156 Minnesota	-14.0	-14.7	-0.7
107 Utah				157 South Alabama			
108 Washington St	+7.0	+7.7	-0.7	158 Arkansas St	+10.0	+9.5	+0.5
Friday, Oct 28th	Line	Comp	Diff	159 Oklahoma			
111 East Carolina				160 Iowa St	+1.0	-0.6	+1.6
112 BYU	-3.0	-4.2	-1.2	161 Arizona St			
113 Louisiana Tech				162 Colorado	+13.5	+12.3	+1.2
114 FIU	+6.5	+9.2	-2.7	163 Colorado St			
Saturday, Oct 29th	Line	Comp	Diff	164 Boise St	-27.0	-25.9	+1.1
117 Illinois				165 Charlotte			
118 Nebraska	+7.5	+7.6	-0.1	166 Rice	-16.5	-14.6	+1.9
119 Boston College				167 USC			
120 Connecticut	+7.5	+12.2	-4.7	168 Arizona	+15.5	+14.1	+1.4
121 Coastal Carolina				169 San Diego St			
122 Marshall	-2.5	-5.2	-2.7	170 Fresno St	-8.5	-8.2	+0.3
123 New Mexico St				171 Stanford			
124 Massachusetts	+2.0	+3.4	-1.4	172 UCLA	-16.5	-13.0	+3.5
125 Miami, OH				173 Oregon			
126 Akron	+8.5	+9.5	-1.0	174 California	+17.0	+16.1	+0.9
127 Missouri				175 USF			
128 South Carolina	-4.0	-5.2	-1.2	176 Houston	-17.5	-16.4	+1.1
129 Kentucky				177 SMU			
130 Tennessee	-12.5	-12.4	+0.1	178 Tulsa	+2.5	+4.2	-1.7
131 TCU				179 Oklahoma St			
132 West Virginia	+7.5	+6.2	+1.3	180 Kansas St	-1.5	-0.9	+0.6
133 Georgia Tech				181 Baylor			
134 Florida St	-24.0	-23.1	+0.9	182 Texas Tech	-2.5	-3.3	-0.8
135 Ohio St				183 Ole Miss			
136 Penn St	+15.5	+15.2	+0.3	184 Texas A&M	+2.5	-1.6	+4.1
137 Wake Forest				185 Arkansas			
138 Louisville	+4.0	+1.2	+2.8	186 Auburn	+3.5	+4.9	-1.4
139 Notre Dame				187 Temple			
140 Syracuse	-2.5	-1.8	+0.7	188 Navy	-13.5	-13.9	-0.4
141 Michigan St				189 North Texas			
142 Michigan	-23.0	-23.4	-0.4	190 W. Kentucky	-10.0	-7.9	+2.1
143 Miami, FL				191 Florida			
144 Virginia	+2.0	+4.8	-2.8	192 † Georgia	-22.5	-22.3	+0.2
145 Cincinnati				193 Wyoming			
146 UCF	0.0	-0.5	-0.5	194 Hawaii	+10.5	+11.4	-0.9
147 Northwestern				195 UAB			
148 Iowa	-11.0	-14.3	-3.3	196 Florida Atlantic	+5.5	+4.7	+0.8
149 Toledo				197 Middle Tennessee			
150 Eastern Michigan	+7.0	+8.2	-1.2	198 UTEP	-1.5	-3.0	-1.5
151 Old Dominion				199 Nevada			
152 Georgia St	-3.5	-5.2	-1.7	200 San Jose St	-24.5	-21.9	+2.6

Betting CFB Openers

Every Sunday in Vegas at 11am PT, Circa Sports is the first book in the world to release CFB lines and we bet them every week. We think it's the best value bets we make all week. 2020 was the first season where we tracked every single bet we made and posted them in the weekly newsletters. We were very pleased with our 119-76-3 (61%) record on these Sunday bets with an average line value of 2.6 ppg! In 2021, we were 224-196-5 (53%) vs the Circa openers with an average line value of 1.8 ppg.

CFB Records (YTD):

VIP: 58-36-1 +17.05 units (CLV 81-7-7 +1.86 ppg)
 Newsletter: 22-14-1 +15.9 units (CLV 31-4-2 +0.9 ppg)
 Covers Release Show: 17-20 (CLV 28-5-4 +1.30 ppg)

Personal Bets (YTD):

FBS vs FBS: 244-206-9 (CLV 340-89-30 +2.14 ppg)
 FBS vs FCS: 47-23-1 (CLV 64-5-2 +3.56 ppg)
 FCS vs FCS: 96-89 (CLV 143-25-17 +1.86 ppg)
 Overall: 387-318-10 (CLV 547-119-49 +2.21 ppg)
 Vs Circa Openers: 175-155-7 (CLV 236-75-26 +1.7 ppg)
 Summer GOY: 18-13 (CLV 22-8-1 +2.85 ppg)

NFL Records (YTD):

14-13 +0.6 units
 Leans: 34-36-4
 Prop Leans: 3-1
 Preseason Leans: 6-4
 Newsletter: 14-10 +3.1 units.

Week 9 CFB Circa Bets (in rotation order):

(112) BYU -3
 (113) Louisiana Tech OVER 53.5
 (114) FIU +9.5-William Hill
 (117) Illinois -6
 (118) Nebraska UNDER 54
 (119) Boston College -9
 (122) Marshall -1
 (123) New Mexico St OVER 36.5
 (125) Miami, OH OVER 46.5
 (127) Missouri OVER 47
 (130) Tennessee UNDER 64.5
 (131) TCU -7
 (134) Florida St -20
 (138) Louisville UNDER 66.5
 (138) Louisville +6
 (140) Syracuse -1
 (143) Miami, FL -2
 (145) Cincinnati OVER 55
 (147) Northwestern OVER 31.5
 (148) Iowa -10.5
 (150) Eastern Michigan +9-William Hill
 (153) Pittsburgh +4-Westgate
 (155) Rutgers OVER 39
 (156) Minnesota -12
 (158) Arkansas St +10
 (161) Arizona St OVER 45.5
 (164) Boise St -26.5
 (165) Charlotte OVER 58
 (168) Arizona UNDER 76.5
 (169) San Diego St OVER 38.5
 (170) Fresno St -7.5
 (172) UCLA UNDER 64.5
 (173) Oregon -13
 (178) Tulsa UNDER 69.5
 (182) Texas Tech -1
 (184) Texas A&M +3-Westgate
 (186) Auburn UNDER 62.5
 (187) Temple OVER 35.5
 (192) Georgia UNDER 56.5
 (194) Hawaii UNDER 51
 (195) UAB -5
 (195) UAB OVER 47.5
 (199) Nevada +25.5

Summer GOY Bets:

Oklahoma St +3 (South Point)
 Wake Forest +7 (South Point)
 Louisville -4 (South Point) after Sam Hartman news.
 UCF +4.5 (Westgate)
 Ohio St -11...bet last week at William Hill
 Georgia -17...bet last week at William Hill

4★ = BEST
3★ = BETTER
2★ = GOOD
1★ = FAIR

THE POWERS' PACK

- 2★ Miami (-3.5) over DETROIT**
2★ NEW ORLEANS (+1.5) over Las Vegas
1★ Arizona (+3.5) over MINNESOTA
1★ Carolina (+4.5) over ATLANTA

Games in Rotation Order

Thursday, October 27th

Baltimore 22 TAMPA BAY 21. Tampa Bay is now on a 0-5 ATS run failing to cover by 12.3 points per game. The Bucs followed up their upset loss to Pittsburgh two weeks ago with an even bigger upset loss to Carolina last week as near 2-TD favorites. The market once again "bet on" them only to fail miserably. Now at No. 15 in ypp margin vs the No. 16 schedule, it's fair to say this is an average football team. Baltimore hasn't been that much better as they haven't covered a spread in their last 4 games. Tough trusting either team. We lean UNDER which has cashed in 4 straight Baltimore games and is 6-1 on the season in Tampa games.

Sunday, October 30th

† **Jacksonville 20 Denver 18.** @Wembley Stadium in London, England. Jacksonville plays their 8th London game in 9 years. All 5 of Jacksonville's losses have been by a single possession. The problem is we needed them to win by margin last week and they fell short vs the Giants. Shame on us for backing a team that is now 0-6 ATS and 0-6 SU as a chalk recently but they did have a 7.0-6.2 yards per play edge. They are on a 0-4 ATS run. Will it be Brett Rypien or Russell Wilson for Denver? It's been a tough watch either way with Denver averaging an-NFL worst 14.3 ppg. Slight lean UNDER which is 6-1 in DENver games this year.

DALLAS 24 Chicago 15. Dallas' 24-6 win over Detroit was a bit misleading as they only had a 330-312 yard edge in Dak's return. The Cowboys are No. 2 in the NFL in defensive ypp. Chicago is off the stunning upset of New England on MNF where they had a 243-70 rushing yard edge. Tough spot traveling on short rest. Lean UNDER for us as we expect the Bears to go back to the ground game.

2★ NEW ORLEANS 26 Las Vegas 25. A lot of money has come in on the OVER in this game. It probably should not be that big of a surprise considering both Las Vegas and New Orleans have seen their totals go OVER in 4 straight. New Orleans despite the injuries have the No. 5 offense in ypp while Las Vegas is No. 7. The Raiders have covered 3 straight games but we're not fans of laying points on the road with them. We like the Saints outright here as they are No. 6 in ypp margin (LV No. 13).

1★ Carolina (plus the points) ATLANTA 23 Carolina 20. Atlanta failed to cover for the first time this season in last week's blowout loss to Cincinnati. It was as bad as the final with Atlanta getting out-gained 537-214. Meanwhile, Carolina stunned Tampa Bay 21-3 and were +2.0 in ypp margin. Atlanta has been an underdog in every game so far this season. Now they're laying more than 4 to a division rival that looks like it hasn't quit on the season. Carolina is also better in ypp margin (-0.2 vs -0.8). We like Carolina.

PHILADELPHIA 27 Pittsburgh 17. We know they covered against us last week, but the Steelers are still No. 31 in the NFL in ypp margin and Kenny Pickett has a 2-7 TD-to-INT ratio. Now they take on a rested Philadelphia team off a bye. The Eagles rank No. 2 in ypp margin. In fairness, Pittsburgh has played the much tougher schedule (No. 3 vs No. 30). While Philly has been favored in every game so far this season, this is the first time they've laid more than 7 points. Another game where we don't see much value.

2★ Miami 29 Detroit 23. We're not afraid to lay the 3.5 here. Generally speaking, we think Miami is underrated. They are No. 10 in ypp margin despite playing the 4th toughest schedule and remember they played two games with a 2nd and 3rd string QB. Detroit is overrated. They were a great story in the summer on Hard Knocks and then started 3-0 ATS. Now they've failed to cover 3 straight games and have been blown out in the last 2. We don't think much of their coaching staff or talent level and the Dolphins' offense (No. 6 in ypp) should have a field day vs the No. 32 defense.

1★ Arizona (plus the points) MINNESOTA 26 Arizona 24. Arizona is No. 30 in ypp margin but have to be feeling better about themselves after covering 3 of their last 4 games. Minnesota is somehow 5-1 SU but the Vikings are No. 24 in ypp margin despite facing the weakest schedule so far in the NFL. Minnesota is off a bye but Arizona also has extra rest after playing last Thursday.

New England 23 N.Y. JETS 20. The Pats come in off the humiliating blowout loss to the Bears. The post-game talk was about the two QB's but we were more disappointed in the Pats defense allowing 243 rushing yards. The Jets have covered 4 straight games but benefited from playing a backup QB last week in Denver. They are 4-0 SU and 4-0 ATS on the road but now we're "selling high" as they begin to play with expectations.

Tennessee 21 HOUSTON 19. Tennessee QB Ryan Tannehill will be limited in practice this week but the expectation is that he will start. The Titans have covered 4 straight games. However, last week was a bit misleading as Tennessee scored 19 points with no offensive TD's. It's also concerning that they rank dead last in ypp margin (-1.1) despite a 4-2 record. Houston has been better than expected but this is still a bottom 3-4 team in the league. We're passing for now.

SEATTLE 24 N.Y. Giants 21. Two of the most surprising teams in the NFL this year. The Giants continue to defy all statistical logic. They were -0.8 in ypp margin last week but won and covered yet again to move to 6-1 SU/ATS. That's despite ranking No. 27 in ypp margin. Meanwhile, Seattle is 4-3 SU/ATS but do rank No. 10 in ypp margin. We don't see much value here.

INDIANAPOLIS 20 Washington 19. Sam Ehlinger will get the start for the Colts here while the Commanders will go with Heinicke after last week's outright upset win over the Packers. There was nothing fluky about Washington's upset. They had a 364-232 yard edge and still won despite allowing a INT return TD. We lean with Washington here.

San Francisco 21 L.A. RAMS 20. The 49ers have won 7 consecutive regular season meetings including 24-9 back on October 3rd at home on MNF. The Rams do come in off a bye but it's tough seeing their offensive line having much success vs a SF defense that is getting healthier. On top of that the 49ers added RB Christian McCaffrey and expect his snaps to increase this week. Still, it has to be concerning that year after year the 49ers are better than their record. This year no exception at No. 2 in ypp margin but they are 3-4 SU/ATS.

BUFFALO 30 Green Bay 19. While it's tempting to back Aaron Rodgers in his largest underdog role in his career, the reality is the Packers are a below-average team. There's nothing fluky about their 4 straight non-covers. They have come up short by 13 ATS ppg. Last week, it was fluky they were in the game as they were outgained by 132 yards in Washington. Now they face by far the best team in the NFL in Buffalo that is fresh off a bye.

Monday, October 31st

Cincinnati 25 CLEVELAND 22. Happy Halloween! The Browns have been downright scary (in a bad way) with 4 straight losses. Meanwhile, the Bengals have now covered 5 straight games and look like a team worthy of being the defending AFC Champs. Early week money is on Cincinnati but we can't recommend laying more than a FG on the road in division play especially on a night where weird things can happen.

Teaser options (ranked strongest to weakest):

1. New Orleans +7.5 (total 49.5)
2. L.A. Rams +7.5 (total 43)
3. Denver +8.5 (total 39.5)
4. Houston +8 (total 40.5)
5. N.Y. Jets +7.5 (total 40.5)

Bye week:

Kansas City, L.A. Chargers

2022 NFL Schedules with Logs

Arizona (SU: 3-4, ATS: 4-3, O/U: 2-4-1)

Date	Opponent	Line	Score	ATS	O/U
9/11	Kansas City	+6	21-44 L	o54	
9/18	at Las Vegas	+5	29-23 W	p52	
9/25	L.A. Rams	+3	12-20 L	u48	
10/2	at Carolina	+1	26-16 W	u44	
10/9	Philadelphia	+5	17-20 W	u48	
10/16	at Seattle	-2	9-19 L	u50	
10/20	New Orleans	-2	42-34 W	o44	
10/30	at Minnesota				
11/6	Seattle				
11/13	at L.A. Rams				
11/21	† San Francisco				
11/27	L.A. Chargers				
12/4					
12/12	New England				
12/18	at Denver				
12/25	Tampa Bay				
1/1	at Atlanta				
1/8	at San Francisco				

Atlanta (SU: 3-4, ATS: 6-1, O/U: 4-3)

Date	Opponent	Line	Score	ATS	O/U
9/11	New Orleans	+5	26-27 W	o43	
9/18	at L.A. Rams	+10	27-31 W	o46	
9/25	at Seattle	+1	23-20 W	u48	
10/2	Cleveland	+1	23-20 W	u48	
10/9	at Tampa Bay	+10	15-21 W	u45	
10/16	San Francisco	+3	28-14 W	u45	
10/23	at Cincinnati	+6	17-35 L	o47	
10/30	Carolina				
11/6	L.A. Chargers				
11/10	at Carolina				
11/20	Chicago				
11/27	at Washington				
12/4	Pittsburgh				
12/11	at New Orleans				
12/17	at Baltimore				
1/1	Arizona				
1/8	Tampa Bay				

Baltimore (SU: 4-3, ATS: 2-4-1, O/U: 2-5)

Date	Opponent	Line	Score	ATS	O/U
9/11	at N.Y. Jets	-6	24-9 W	u44	
9/18	Miami	-3	38-42 W	o43	
9/25	at New England	-2	37-26 W	o45	
10/2	Buffalo	+3	20-23 P	u50	
10/9	Cincinnati	-3	19-17 L	u48	
10/16	at N.Y. Giants	-5	20-24 L	u45	
10/23	Cleveland	-6	23-20 L	u46	
11/27	at Tampa Bay				
11/27	at New Orleans				
11/13					
12/4	Carolina				
12/11	at Jacksonville				
12/17	at Pittsburgh				
12/24	at Cleveland				
1/1	Pittsburgh				
1/8	at Cincinnati				

Buffalo (SU: 5-1, ATS: 4-1-1, O/U: 1-5)

Date	Opponent	Line	Score	ATS	O/U
9/8	at L.A. Rams	-2	31-10 W	u52	
9/19	Tennessee	-10	41-17 W	o47	
9/25	at Miami	-4	19-21 L	o54	
10/2	at Baltimore	-3	23-20 P	u50	
10/9	Pittsburgh	-14	38-3 W	u41	
10/16	at Kansas City	-2	24-20 W	u54	
10/23					
10/30	Green Bay				
11/6	at N.Y. Jets				
11/13	Minnesota				
11/20	Cleveland				
11/27	at Detroit				
12/1	at New England				
12/11	N.Y. Jets				
12/17	Miami				
12/24	at Chicago				
1/2	at Cincinnati				
1/8	New England				

Carolina (SU: 2-5, ATS: 2-5, O/U: 2-5)

Date	Opponent	Line	Score	ATS	O/U
9/11	Cleveland	-1	24-26 L	o42	
9/18	at N.Y. Giants	-1	16-19 L	u43	
9/25	New Orleans	+2	22-14 W	u41	
10/2	Arizona	-1	16-26 L	u44	
10/9	San Francisco	+6	15-37 L	o39	
10/16	at L.A. Rams	+9	10-24 L	u41	
10/23	Tampa Bay	+13	21-3 W	u38	
10/30	at Atlanta				
11/6	at Cincinnati				
11/10	Atlanta				
11/20	at Baltimore				
11/27	Denver				
12/4					
12/11	at Seattle				
12/18	Pittsburgh				
12/24	Detroit				
1/1	at Tampa Bay				
1/8	at New Orleans				

Chicago (SU: 3-4, ATS: 3-3-1, O/U: 3-4)

Date	Opponent	Line	Score	ATS	O/U
9/11	San Francisco	+6	19-10 W	u38	
9/18	at Green Bay	+10	10-27 L	u42	
9/25	Houston	-3	23-20 P	o39	
10/2	at N.Y. Giants	+3	12-20 L	u39	
10/9	at Minnesota	+8	22-29 W	o44	
10/13	Washington	+1	7-12 L	u38	
10/24	at New England	+8	33-14 W	o40	
10/30	at Dallas				
11/6	Miami				
11/13	Detroit				
11/20	at Atlanta				
11/27	at N.Y. Jets				
12/4	Green Bay				
12/11					
12/18	Philadelphia				
12/24	Buffalo				
1/1	at Detroit				
1/8	Minnesota				

Cincinnati (SU: 4-3, ATS: 5-2, O/U: 2-5)

Date	Opponent	Line	Score	ATS	O/U
9/11	Pittsburgh	-7	20-23 L	u44	
9/18	at Dallas	-7	17-20 L	u42	
9/25	at N.Y. Jets	-6	27-12 W	u46	
10/2	Miami	-4	27-15 W	u49	
10/9	at Baltimore	+3	17-19 W	u49	
10/16	at New Orleans	-3	30-26 W	o43	
10/23	Atlanta	-6	35-17 W	o47	
10/31	at Cleveland				
11/6	Carolina				
11/13					
11/20	at Pittsburgh				
11/27	at Tennessee				
12/4	Kansas City				
12/11	Cleveland				
12/18	at Tampa Bay				
12/24	at New England				
1/2	Buffalo				
1/8	Baltimore				

Cleveland (SU: 2-5, ATS: 3-4, O/U: 5-2)

Date	Opponent	Line	Score	ATS	O/U
9/11	at Carolina	+1	26-24 W	o42	
9/18	N.Y. Jets	-6	30-31 L	o38	
9/25	Pittsburgh	-4	29-17 W	o38	
10/2	at Atlanta	-1	20-23 L	u48	
10/9	L.A. Chargers	+1	28-30 L	o47	
10/16	New England	-2	15-38 L	o43	
10/23	at Baltimore	+6	20-23 W	u46	
10/31	Cincinnati				
11/6					
11/13	at Miami				
11/20	at Buffalo				
11/27	Tampa Bay				
12/4	at Houston				
12/11	at Cincinnati				
12/17	Baltimore				
12/24	at N.Y. Giants				
1/2	at Washington				
1/8	at Pittsburgh				

Dallas (SU: 5-2, ATS: 5-2, O/U: 2-5)

Date	Opponent	Line	Score	ATS	O/U
9/11	Tampa Bay	+2	3-19 L	u49	
9/18	Cincinnati	+7	20-17 W	u42	
9/25	at N.Y. Giants	+1	23-16 W	u45	
10/2	Washington	-3	25-10 W	u41	
10/9	at L.A. Rams	+5	22-10 W	u41	
10/16	at Philadelphia	+7	17-26 L	u42	
10/23	Detroit	-7	24-6 W	u49	
10/30	Chicago				
11/6					
11/13	at Green Bay				
11/20	at Minnesota				
11/24	N.Y. Giants				
12/4	Indianapolis				
12/11	Houston				
12/18	at Jacksonville				
12/24	at Tennessee				
1/2	at Washington				

Denver (SU: 2-5, ATS: 2-5, O/U: 1-6)

Date	Opponent	Line	Score	ATS	O/U
9/12	at Seattle	-6	16-17 L	u43	
9/18	Houston	-10	16-9 L	u45	
9/25	San Francisco	+2	23-16 W	u45	
10/2	at Las Vegas	+2	23-32 L	o45	
10/6	Indianapolis	-3	9-12 L	u42	
10/17	at Chargers	+3	16-19 W	u45	
10/23	N.Y. Jets	+2	9-16 L	u36	
10/30	at Jacksonville				
11/6					
11/13	at Tennessee				
11/20	Las Vegas				
11/27	at Carolina				
12/4	at Baltimore				
12/11	Kansas City				
12/18	Arizona				
12/25	at L.A. Rams				
1/2	at Kansas City				
1/8	L.A. Chargers				

Detroit (SU: 1-5, ATS: 3-3, O/U: 4-2)

Date	Opponent	Line	Score	ATS	O/U
9/11	Philadelphia	+6	35-38 W	o48	
9/18	Washington	PK	36-27 W	o48	
9/25	at Minnesota	+6	24-28 W	o51	
10/2	Seattle	-3	45-48 L	u47	
10/9	at New England	+3	0-29 L	u48	
10/16					
10/23	at Dallas	+7	6-24 L	u49	
10/30	Miami				
11/6	Green Bay				
11/13	at Chicago				
11/20	at N.Y. Giants				
11/24	Buffalo				
12/4	Jacksonville				
12/11	Minnesota				
12/18	at N.Y. Jets				
12/24	at Carolina				
1/2	Chicago				
1/8	at Green Bay				

Green Bay (SU: 3-4, ATS: 2-5, O/U: 3-4)

Date	Opponent	Line	Score	ATS	O/U
9/11	at Minnesota	+2	7-23 L	u46	
9/18	Chicago	-10	27-10 W	u42	
9/25	at Tampa Bay	+1	14-12 W	u42	
10/2	New England	-9	27-24 L	o40	
10/9	at N.Y. Giants	-9	22-27 L	o42	
10/16	N.Y. Jets	-7	10-22 L	u44	
10/23	at Washington	-4	21-23 L	o41	
10/30	at Buffalo				
11/6	at Detroit				
11/13	Dallas				
11/27	Philadelphia				
12/4	at Chicago				
12/11					
12/19	L.A. Rams				
12/25	at Philadelphia				
1/2	Minnesota				
1/8	Detroit				

Houston (SU: 1-4-1, ATS: 3-2-1, O/U: 3-3)

Date	Opponent	Line	Score	ATS	O/U
9/11	Indianapolis	-7	20-20 W	u45	
9/18	at Denver	+10	9-16 W	u46	
9/25	Buffalo	+3	20-23 P	o39	
10/2	L.A. Chargers	+5	24-34 L	u45	
10/9	at Jacksonville	+7	13-6 W	o43	
10/16					
10/23	at Las Vegas	+7	20-38 L	o46	
10/30	Tennessee				
11/6	Philadelphia				
11/13	at N.Y. Giants				
11/20	Washington				
11/27	at Miami				
12/4	Cleveland				
12/11	at Dallas				
12/18	Kansas City				
12/24	at Tennessee				
1/1	Jacksonville				
1/8	at Indianapolis				

Indianapolis (SU: 3-3-1, ATS: 3-4, O/U: 1-6)

Date	Opponent	Line	Score	ATS	O/U
9/11	at Houston	-7	20-20 L	u46	
9/18	at Jacksonville	-3	0-24 L	u43	
9/25	Kansas City	+4	20-17 W	u51	
10/2	Tennessee	-4	17-24 L	u43	
10/6	at Denver	+3	12-9 W	u42	
10/16	Jacksonville	-1	34-27 W	o41	
10/23	at Tennessee	+2	10-19 L	u43	
10/30	Washington				
11/6	at New England				
11/13	at Las Vegas				
11/20	Philadelphia				
11/28	Pittsburgh				
12/4	at Dallas				
12/11					
12/17	at Minnesota				
12/26	L.A. Chargers				
1/1	at N.Y. Giants				

2022 CFB Schedules with Logs

Air Force (SU: 5-3, ATS: 4-4, O/U: 4-4)

Date	Opponent	Line	Score	ATS	O/U
9/3	Northern Iowa	-15	48-17 W	o56	
9/10	Colorado	-17	41-10 W	o40	
9/16	at Wyoming	-16	14-17 L	u47	
9/23	Nevada	-24	48-20 W	o46	
10/1	Navy	-14	13-10 L	u38	
10/8	at Utah State	-11	27-34 L	o53	
10/15	at UNLV	-10	42-7 W	u50	
10/22	Boise State	-2	14-19 L	u46	

10/29	† Air Force				
11/2	New Mexico				
11/9	Colorado State				
11/26	at San Diego St				

Akron (SU: 1-7, ATS: 4-4, O/U: 3-4-1)

Date	Opponent	Line	Score	ATS	O/U
9/1	Saint Francis-ot	-18	30-23 L	p53	
9/10	at Michigan St	+34	0-52 L	u56	
9/17	at Tennessee	+47	6-63 L	o67	
9/24	at Liberty	+26	12-21 W	u52	
10/1	Bowling Green	+8	28-31 W	o49	
10/8	at Ohio	+10	34-55 L	o59	
10/15	Central Michigan	+12	21-28 W	u60	
10/22	at Kent State	+16	27-37 W	u65	

11/5					
11/8	Eastern Michigan				
11/9	at Buffalo				
11/26	at Northern Illinois				

Alabama (SU: 7-1, ATS: 5-3, O/U: 3-5)

Date	Opponent	Line	Score	ATS	O/U
9/3	Utah State	-42	55-0 W	u63	
9/10	at Texas	-21	20-19 L	u64	
9/17	UL-Monroe	-49	63-7 W	o61	
9/24	Vanderbilt	-40	55-3 W	u61	
10/1	at Arkansas	-17	49-26 W	o61	
10/8	Texas A&M	-24	24-20 L	u48	
10/15	at Tennessee	-9	49-52 L	o68	
10/22	Mississippi State	-21	30-6 W	u61	

11/5	at LSU				
11/12	at Ole Miss				
11/19	Austin Peay				

Appalachian St (SU: 4-3, ATS: 3-4, O/U: 4-3)

Date	Opponent	Line	Score	ATS	O/U
9/3	North Carolina	-3	61-63 L	o56	
9/10	at Texas A&M	+18	17-14 W	u54	
9/17	Troy	-14	32-28 L	o52	
9/24	James Madison	-6	28-32 L	o56	
10/1	The Citadel	-40	49-0 W	u54	
10/8	at Texas State	-19	24-36 L	o54	

10/15					
10/19	Georgia State	-9	42-17 W	u60	
10/29	Robert Morris				
11/3	at Coastal Carolina				
11/12	at Marshall				
11/19	Old Dominion				
11/26	at Georgia Southern				

Arizona (SU: 3-4, ATS: 4-3, O/U: 5-2)

Date	Opponent	Line	Score	ATS	O/U
9/3	at San Diego St	+6	38-20 W	o46	
9/10	Mississippi State	+12	17-39 L	u58	
9/17	North Dakota St	+3	31-28 W	o49	
9/24	at California	+3	31-49 L	o50	
10/1	Colorado	-18	43-20 W	o58	
10/8	Oregon	+13	22-49 W	u72	
10/15	at Washington	+14	39-49 W	o71	

10/22					
10/29	USC				
11/5	at Utah				
11/12	at UCLA				
11/19	Washington State				
11/25	Arizona State				

Arizona St (SU: 2-5, ATS: 4-3, O/U: 2-5)

Date	Opponent	Line	Score	ATS	O/U
9/1	Northern Arizona	-25	40-3 W	u52	
9/10	at Oklahoma St	+11	17-34 L	u58	
9/17	Eastern Michigan	-20	21-30 L	u56	
9/24	Utah	+17	13-34 L	u53	
10/1	at USC	+24	25-42 W	o61	
10/8	Washington	+13	45-38 W	o56	

10/15					
10/22	at Stanford	+3	14-15 W	u52	
10/29	at Colorado				
11/5	UCLA				
11/12	at Washington State				
11/19	Oregon State				
11/25	at Arizona				

Arkansas (SU: 4-3, ATS: 3-4, O/U: 6-1)

Date	Opponent	Line	Score	ATS	O/U
9/3	Cincinnati	-6	31-24 W	o54	
9/10	South Carolina	-9	44-30 W	o56	
9/17	Missouri State	-26	38-27 L	o60	
9/24	† Texas A&M	+1	21-23 L	u51	
10/1	Alabama	+17	26-49 L	o61	
10/8	at Mississippi St	+9	17-40 L	o55	
10/15	at BYU	+1	52-35 W	o66	

10/22					
10/29	at Auburn				
11/5	Liberty				
11/12	LSU				
11/19	Ole Miss				
11/25	at Missouri				

Arkansas St (SU: 2-6, ATS: 6-2, O/U: 5-3)

Date	Opponent	Line	Score	ATS	O/U
9/3	Grambling State	-25	58-3 W	o57	
9/10	at Ohio State	+44	12-45 W	u68	
9/17	at Memphis	+14	32-44 W	o64	
9/24	at Old Dominion	+6	26-29 W	u55	
10/1	UL-Monroe	-7	45-28 W	o59	
10/8	James Madison	+11	20-42 L	o55	
10/15	at Southern Miss	+4	19-20 W	u53	
10/22	at UL-Lafayette	+6	18-38 L	o51	

10/29	South Alabama				
11/5					
11/12	Massachusetts				
11/19	at Texas State				
11/26	Troy				

Army (SU: 3-4, ATS: 2-5, O/U: 5-2)

Date	Opponent	Line	Score	ATS	O/U
9/3	at Coa. Carolina	+1	28-38 L	o53	
9/10	UTSA-ot	+2	38-41 L	o54	
9/17	Villanova	-14	49-10 W	o56	

10/1	Georgia State	-8	14-31 L	u54	
10/8	at Wake Forest	+16	10-45 L	u65	
10/15	Colgate	-31	42-17 L	o51	
10/22	UL-Monroe	-6	48-24 W	o55	
10/29					
11/5	† Air Force				

Auburn (SU: 3-4, ATS: 2-5, O/U: 4-3)

Date	Opponent	Line	Score	ATS	O/U
9/3	Mercer	-30	42-16 L	o51	
9/10	San Jose State	-24	24-16 L	u48	
9/17	Penn State	+2	12-41 L	o47	
9/24	Missouri-ot	-7	17-14 L	u51	
10/1	LSU	+8	17-21 W	u44	
10/8	at Georgia	+27	10-42 L	u49	
10/15	at Ole Miss	+15	34-48 W	o55	

10/22					
10/29	Arkansas				
11/5	at Mississippi State				
11/12	Texas A&M				
11/19	Western Kentucky				
11/26	at Alabama				

Ball St (SU: 4-4, ATS: 3-5, O/U: 3-5)

Date	Opponent	Line	Score	ATS	O/U
9/1	at Tennessee	+37	10-59 L	o66	
9/10	Western Michigan	-6	30-37 L	o51	
9/17	Murray State	-21	31-40 W	u53	
9/24	at Ga Southern	+9	23-34 L	u57	
10/1	No. Illinois-Zot	+3	44-38 W	o58	
10/8	at Central Mich	+7	17-16 W	u43	
10/15	Connecticut	-9	25-21 L	u47	
10/22	Eastern Michigan	-2	16-20 L	u57	

10/29					
11/1	at Kent State				
11/8	at Toledo				
11/15	Ohio				
11/22	at Miami (OH)				

Baylor (SU: 4-3, ATS: 4-3, O/U: 5-2)

Date	Opponent	Line	Score	ATS	O/U
9/3	Albany	-42	69-10 W	o46	
9/10	at BYU-Zot	+2	20-26 L	u55	
9/17	Texas State	-30	42-7 W	u53	
9/24	at Iowa State	-2	31-24 W	o45	
10/1	Oklahoma State	-2	25-36 L	o56	

10/13	at West Virginia	-3	40-43 L	o55	
10/22	Kansas	-10	35-23 W	o56	
10/29	at Texas Tech				
11/5	at Oklahoma				
11/12	Kansas State				
11/19	TCU				
11/25	at Texas				

Boise St (SU: 5-2, ATS: 3-3-1, O/U: 3-4)

Date	Opponent	Line	Score	ATS	O/U
9/3	at Oregon State	+1	17-34 L	u55	
9/10	at New Mexico	-17	31-14 P	o43	
9/17	UT-Martin	-24	30-7 L	u53	
9/23	at UTEP	-16	10-27 L	u44	
9/24	San Diego State	-6	35-13 W	o45	
10/1	Fresno State	-10	40-20 W	o48	

10/15					
10/22	at Air Force	+2	19-14 W	u46	
10/29	Colorado State				
11/5	BYU				
11/12	at Nevada				
11/19	at Wyoming				

Boston College (SU: 2-5, ATS: 1-6, O/U: 3-4)

Date	Opponent	Line	Score	ATS	O/U
9/3	Rutgers	-9	21-22 L	u47	
9/10	at Virginia Tech	-2	10-27 L	u45	
9/17	Maine	-31	38-17 L	o48	
9/24	at Florida State	+18	14-44 L	o50	
10/1	Louisville	+13	34-33 W	o48	
10/8	Clemson	+21	3-31 L	u49	

10/15					
10/22	at Wake Forest	+20	15-43 L	u60	
10/29	at Connecticut				
11/4	Duke				
11/12	at NC State				
11/19	at Notre Dame				
11/25	Syracuse				

Brigham Young (SU: 4-4, ATS: 3-4-1, O/U: 6-2)

Date	Opponent	Line	Score	ATS	O/U
9/3	at UCLA	+24	17-45 L	o56	
9/10	E. Kentucky-7ot	-7	57-59 L	o57	
9/17	Marshall-ot	+17	34-31 W	o50	
9/24	at Mississippi St	+31	14-45 P	o53	
10/1	at Akron	-8	31-28 L	u49	
10/8	Buffalo	+2	7-38 L	o56	
10/15	Miami (OH)	+7	17-13 W	u45	
10/22	at Central Mich	+6	34-18 W	o50	

10/29					
11/2	Western Michigan				
11/9	Kent State				
11/15	at Toledo				
11/22	at Ohio				

Buffalo (SU: 5-3, ATS: 6-1-1, O/U: 4-4)

Date	Opponent	Line	Score	ATS	O/U
9/3	at Maryland	+24	10-31 W	u66	
9/10	Holy Cross	-6	31-37 L	o51	
9/17	at Coa. Carolina	+12	26-38 P	o59	
9/24	at Eastern Mich	+6	50-31 W	o56	
10/1	Miami (OH)	-3	24-20 W	u50	
10/8	at Bowling Green	-2	38-7 W	u46	
10/15	at Massachusetts	-17	34-7 W	u47	
10/22	Toledo	+7	34-27 W	o56	

10/29					
11/1	at Ohio				
11/9	at Central Michigan				
11/19	Akron				
11/26	Kent State				

BYU (SU: 4-4, ATS: 2-6, O/U: 5-3)

Date	Opponent	Line	Score	ATS
9/3	at USF	-11	50-21 W	
9/10	Baylor-2ot	-2'	26-20 W	
9/17	at Oregon	+3'	20-41 L	
9/24	Wyoming	-21	38-24 L	
9/29	Utah State	-26	38-26 L	
10/8	† Notre Dame	+3'	20-28 L	
10/15	Arkansas	-1	35-52 L	
10/22	at Liberty	-7	14-41 L	
10/28	East Carolina			
11/5	at Boise State			

James Madison (SU: 5-2, ATS: 5-2, O/U: 5-2)

Date	Opponent	Line	Score	ATS	O/U
9/3	Middle Tenn	-4	44-7 W	u60	
9/10	Norfolk State	-41	63-7 W	o54	
9/17	at Appalachian St	+6	32-28 W	o56	
9/24	Texas State	-22	40-13 W	o51	
10/1	at Arkansas State	-11	42-20 W	o55	
10/8	at Ga Southern	-13	38-45 L	o68	
10/15	Marshall	-9	12-26 L	u48	
10/22	at Louisville				
10/29	at Old Dominion				
11/5	Georgia State				
11/12	at Coastal Carolina				

Kansas St (SU: 5-3, ATS: 6-1-1, O/U: 5-3)

Date	Opponent	Line	Score	ATS	O/U
9/2	Tennessee Tech	-30	56-10 W	o62	
9/9	at W. Virginia	+14	55-42 W	o59	
9/17	at Houston	+8	48-30 W	o58	
9/24	Duke	-7	35-27 W	u65	
10/1	Iowa State	+3	14-11 W	u59	
10/8	TCU	-7	31-38 P	u70	
10/15	at Baylor	+10	42-52 W	o66	
10/22	at Oklahoma	+10	23-35 L	o56	
10/29					
11/5	Oklahoma State				
11/12	at Texas Tech				
11/19	Texas				
11/26	at Kansas State				

Kansas St (SU: 5-2, ATS: 4-2-1, O/U: 3-4)

Date	Opponent	Line	Score	ATS	O/U
9/3	South Dakota	-27	34-0 W	u50	
9/10	Missouri	-7	40-12 W	u52	
9/17	Tulane	-13	10-17 L	u49	
9/24	at Oklahoma	+13	41-34 W	o53	
10/1	Texas Tech	-7	37-28 W	o56	
10/8	at Iowa State	-1	10-9 P	u45	
10/15					
10/22	at TCU	+3	28-38 L	o54	
10/29	Oklahoma State				
11/5	Texas				
11/12	at Baylor				
11/19	at West Virginia				
11/26	Kansas				

Kent St (SU: 3-5, ATS: 3-5, O/U: 3-5)

Date	Opponent	Line	Score	ATS	O/U
9/3	at Washington	+23	20-15 L	o61	
9/10	at Oklahoma	+8	63-10 W	u74	
9/17	LIU	-40	63-10 W	u64	
9/24	at Georgia	+45	22-39 W	u61	
10/1	Ohio	-12	31-24 L	u65	
10/8	at Miami (OH)	-5	24-27 L	u56	
10/15	at Toledo	+7	31-52 L	o62	
10/22	Akron	-16	33-27 L	u65	
10/29					
11/1	Ball State				
11/9	at Bowling Green				
11/16	Eastern Michigan				
11/26	at Buffalo				

Kentucky (SU: 5-2, ATS: 5-2, O/U: 1-6)

Date	Opponent	Line	Score	ATS	O/U
9/3	Miami (OH)	-15	37-13 W	u55	
9/10	at Florida	+6	26-16 W	u53	
9/17	Youngstown St	-30	31-0 W	u49	
9/24	Northern Illinois	-27	31-23 L	o53	
10/1	at Ole Miss	-6	19-22 W	u55	
10/8	South Carolina	-4	14-24 L	u44	
10/15	Mississippi State	+3	27-17 W	u50	
10/22					
10/29	at Tennessee				
11/5	at Missouri				
11/12	Vanderbilt				
11/19	Gardner-Webb				
11/26	Louisville				

Liberty (SU: 7-1, ATS: 4-4, O/U: 4-4)

Date	Opponent	Line	Score	ATS	O/U
9/3	at So. Miss	-37	29-27 L	u50	
9/10	UAB	+6	21-14 W	u50	
9/17	at Wake Forest	+17	36-37 W	o64	
9/24	Akron	-26	21-12 L	u52	
10/1	at Old Dominion	-3	38-24 W	o47	
10/8	at Massachusetts	-22	42-24 L	o45	
10/15	Gardner-Webb	24	21-20 L	u55	
10/22	BYU	+7	41-14 W	u58	
10/29					
11/5	at Arkansas				
11/12	at Connecticut				
11/19	Virginia Tech				
11/26	New Mexico State				

Louisiana Tech (SU: 2-5, ATS: 4-3, O/U: 6-1)

Date	Opponent	Line	Score	ATS	O/U
9/1	at Missouri	+20	24-52 L	o62	
9/10	Stephen F. Austin	-6	52-17 W	o64	
9/17	at Clemson	+33	20-48 W	o53	
9/24	at South Alabama	+13	14-38 L	u59	
10/1					
10/8	UTEP	-1	41-31 W	o52	
10/15	at North Texas	+6	27-47 L	o62	
10/22	Rice	+2	41-42 W	o56	
10/29	at FIU				
11/5	Middle Tennessee				
11/12	at UTSA				
11/19	at Charlotte				
11/26	UAB				

Louisville (SU: 4-3, ATS: 4-3, O/U: 3-4)

Date	Opponent	Line	Score	ATS	O/U
9/3	at Syracuse	-5	7-31 L	u55	
9/9	at UCF	+5	20-14 W	u62	
9/16	Florida State	+2	31-35 L	o57	
9/24	USF	-15	41-3 W	u63	
10/1	at Boston College	-13	33-34 L	o48	
10/8	at Virginia	+1	34-17 W	o47	
10/15					
10/22	Pittsburgh	-1	24-10 W	u55	
10/29	Wake Forest				
11/5	James Madison				
11/12	at Clemson				
11/19	NC State				
11/26	at Kentucky				

LSU (SU: 6-2, ATS: 5-3, O/U: 3-5)

Date	Opponent	Line	Score	ATS	O/U
9/4	at Florida State	-4	23-24 L	u51	
9/10	Southern	-44	65-17 W	o56	
9/17	Mississippi State	+3	31-16 W	u53	
9/24	New Mexico	-31	38-0 W	u43	
10/1	at Auburn	8	21-17 L	u44	
10/8	Tennessee	+2	13-40 L	u63	
10/15	at Florida	+2	45-35 W	o51	
10/22	Ole Miss	PK	45-20 W	o64	
10/29					
11/5	Alabama				
11/12	at Arkansas				
11/19	UAB				
11/26	at Texas A&M				

Marshall (SU: 4-3, ATS: 3-4, O/U: 1-6)

Date	Opponent	Line	Score	ATS	O/U
9/3	Norfolk St	-40	55-3 W	u59	
9/10	at Notre Dame	+20	26-21 W	u48	
9/17	at Bowl Green	-17	31-34 L	o50	
9/24	Gardner-Webb	-3	28-7 L	u51	
10/8					
10/15	UL-Lafayette	-10	13-23 L	u45	
10/22	at James Madison	+9	26-12 W	u48	
10/29	Coastal Carolina				
11/5	at Old Dominion				
11/12	Appalachian State				
11/19	at Georgia Southern				
11/26	Georgia State				

Maryland (SU: 6-2, ATS: 4-4, O/U: 4-4)

Date	Opponent	Line	Score	ATS	O/U
9/3	Buffalo	-24	31-10 L	o66	
9/10	at Charlotte	-28	56-21 W	o65	
9/17	SMU	-3	34-27 W	u73	
9/24	at Michigan	+17	27-34 W	u68	
10/1	Michigan State	-7	27-13 W	u56	
10/8	Purdue	-3	29-31 L	o59	
10/15	at Indiana	-11	38-33 L	o63	
10/22	Northwestern	-14	31-24 L	o51	
10/29					
11/5	at Wisconsin				
11/12	at Penn State				
11/19	Ohio State				
11/26	Rutgers				

Massachusetts (SU: 1-6, ATS: 3-4, O/U: 2-5)

Date	Opponent	Line	Score	ATS	O/U
9/3	at Tulane	+28	10-42 L	u59	
9/10	at Toledo	+28	10-55 L	u49	
9/17	Stony Brook	-1	20-3 W	u44	
9/24	at Temple	+10	0-28 L	u44	
10/1	at Eastern Mich	-20	13-20 W	u53	
10/8	Liberty	+22	24-42 W	o45	
10/15	Buffalo	+17	7-34 L	u47	
10/22					
10/29	New Mexico St				
11/5	at Connecticut				
11/12	at Arkansas State				
11/19	at Texas A&M				
11/26	Arkansas				

Memphis (SU: 4-4, ATS: 3-5, O/U: 7-1)

Date	Opponent	Line	Score	ATS	O/U
9/3	at Mississippi St	+17	23-49 L	o58	
9/10	at Tulane	-4	37-13 W	u47	
9/17	Arkansas State	-14	44-32 L	o64	
9/24	North Texas	-13	44-24 W	o58	
10/1	Temple	-18	24-3 L	u60	
10/8	Houston	-1	32-33 L	o57	
10/15	at E. Carolina	-40	5-47 W	o62	
10/22	at Tulane	+7	28-38 L	o55	
10/29					
11/5	UCF				
10/10	Tulsa				
11/19	North Alabama				
11/26	at SMU				

Miami, FL (SU: 3-4, ATS: 1-6, O/U: 3-4)

Date	Opponent	Line	Score	ATS	O/U
9/3	Bethune-Cook	-49	70-13 W	o60	
9/10	Southern Miss	-27	30-7 L	u50	
9/17	at Texas A&M	+6	9-17 L	u45	
9/24	Middle Tennessee	-25	31-45 L	o53	
10/1	North Carolina	-4	24-27 L	o57	
10/8	at Virginia Tech	-9	20-14 L	u58	
10/15	Duke	-10	21-45 L	o59	
10/22	at Virginia				
10/29	Florida State				
11/5	at Georgia Tech				
11/12	at Clemson				
11/19	Pittsburgh				
11/26					

Miami, OH (SU: 3-5, ATS: 3-5, O/U: 1-7)

Date	Opponent	Line	Score	ATS	O/U
9/3	at Kentucky	+15	13-37 L	u55	
9/10	Robert Morris	-30	31-14 L	u54	
9/17	at Cincinnati	+24	17-38 W	o51	
9/24	at Northwestern	+7	17-14 W	u50	
10/1	at Buffalo	+3	20-24 L	u50	
10/8	Kent State	+5	27-24 W	u56	
10/15	at Bowling Green	-7	13-17 L	u45	
10/22	Western Michigan	-7	10-16 L	u44	
10/29	at Akron				
11/5	Ohio				
11/12	at Northern Illinois				
11/19	Ball State				
11/26					

Michigan (SU: 7-0, ATS: 4-3, O/U: 1-5-1)

Date	Opponent	Line	Score	ATS	O/U
9/3	Colorado State	-31	51-7 W	u60	
9/10	Hawaii	-53	56-10 L	u66	
9/17	Connecticut	-47	59-0 W	p59	
9/24	Maryland	-17	34-27 L	u46	
10/1	at Iowa	-10	27-14 W	u62	
10/8	at Indiana	-23	31-10 L	u58	
10/15	Penn State	-7	41-17 W	u49	
10/22					
10/29	Michigan State				
11/5	at Rutgers				
11/12	Nebraska				
11/19	Illinois				
11/26	at Ohio State				

Michigan St (SU: 3-4, ATS: 3-4, O/U: 3-4)

Date	Opponent	Line	Score	ATS	O/U
9/2	Western Michigan	-21	55-13 W	u54	
9/9	Akron	-34	52-0 W	u56	
9/17	at Washington	+3	28-39 L	o56	
9/24	Minnesota	+3	7-34 L	u50	
10/1	at Maryland	+7	13-27 L	u54	
10/8	Ohio State	+27	20-49 L	o64	
10/15	Wisconsin-2ot	+7	34-28 W	o49	
10/22					
10/29	at Michigan				
11/5	at Illinois				
11/12	Rutgers				
11/19	Indiana				
11/26	at Penn State				

Middle Tennessee (SU: 3-4, ATS: 3-4, O/U: 4-3)

Date	Opponent	Line	Score	ATS	O/U
9/3	at James Madison	+4	7-44 L	u50	
9/10	at Colorado St	+14	34-19 W	u68	
9/17	Tennessee State	-19	49-6 W	o52	
9/24	at Miami (FL)	+4	45-31 W	o53	
10/1	UTSA	+4	30-45 L	o64	
10/8	at UAB	+10	14-41 L	o53	
10/15	Western Kentucky	+7	17-35 L	u57	
10/22					
10/29	at UTEP				</

San Diego St (SU: 4-3, ATS: 2-5, O/U: 2-5)

Date	Opponent	Line	Score	ATS	O/U
9/3	Arizona	-6	20-38 L	u46	
9/10	Idaho State	-32	38-7 L	u50	
9/17	at Utah	-22	7-35 L	u48	
9/24	Toledo	+2	17-14 W	u44	
9/30	at Boise State	+6	13-35 L	u38	
10/8	Hawaii	-24	16-14 L	u49	
10/15					
10/22	at Nevada	-7	23-7 W	u36	
10/29	at Fresno State				
11/5	UNLV				
11/12	San Jose State				
11/18	at New Mexico				
11/26	Air Force				

San Jose St (SU: 4-2, ATS: 2-4, O/U: 1-5)

Date	Opponent	Line	Score	ATS	O/U
9/3	Portland State	-22	21-17 L	u51	
9/10	at Auburn	+24	16-24 W	u48	
9/17					
9/24	Western Mich	-6	34-6 W	u48	
10/1	at Wyoming	-2	33-16 W	u42	
10/7	UNLV	-6	40-7 W	u51	
10/15	at Fresno State	-7	10-17 L	u47	
10/22	at New Mexico St	Cancelled			
10/29	Nevada				
11/5	Colorado State				
11/12	at San Diego State				
11/19	at Utah State				
11/26	Hawaii				

SMU (SU: 3-4, ATS: 2-5, O/U: 2-5)

Date	Opponent	Line	Score	ATS	O/U
9/3	at North Texas	-9	48-10 W	u67	
9/10	Lamar	-48	45-16 L	u66	
9/17	at Maryland	+3	27-34 L	u73	
9/24	TCU	+2	34-42 L	u72	
10/1					
10/8	at UCF	+3	19-41 L	u65	
10/14	Navy	-12	40-34 L	u59	
10/22	Cincinnati	+3	27-29 W	u59	
10/29	Tulsa				
11/5	Houston				
11/12	at USC				
11/17	at Tulane				
11/26	Memphis				

South Alabama (SU: 5-2, ATS: 4-3, O/U: 4-3)

Date	Opponent	Line	Score	ATS	O/U
9/3	Nicholls State	-13	48-7 W	u53	
9/10	at Central Mich	-48	45-16 L	u66	
9/17	at UCLA	+15	31-32 W	u59	
9/24	Louisiana Tech	-13	38-14 W	u59	
10/1	at UL-Lafayette	-8	20-17 L	u47	
10/8					
10/15	UL-Monroe	-17	41-34 L	u51	
10/20	Troy	-3	6-10 L	u47	
10/29	at Arkansas State				
11/5	at Georgia Southern				
11/12	Texas State				
11/19	at Southern Miss				
11/26	Old Dominion				

South Carolina (SU: 5-2, ATS: 4-3, O/U: 4-3)

Date	Opponent	Line	Score	ATS	O/U
9/3	Georgia State	-12	35-14 W	u55	
9/10	at Arkansas	+9	30-44 L	u56	
9/17	Georgia	+25	7-48 L	u55	
9/24	Charlotte	-23	56-20 W	u59	
10/1	So. Carolina St	-40	50-10 L	u57	
10/8	at Kentucky	+4	24-14 W	u44	
10/15					
10/22	Texas A&M	+3	30-24 W	u44	
10/29	Missouri				
11/5	at Vanderbilt				
11/12	at Tennessee				
11/19	at Clemson				
11/26	at Florida				

Southern Miss (SU: 4-3, ATS: 5-2, O/U: 3-4)

Date	Opponent	Line	Score	ATS	O/U
9/3	Liberty-40t	+3	27-29 W	u50	
9/10	at Miami (FL)	+27	7-30 W	u50	
9/17	Northwestern St	-33	64-10 W	u50	
9/24	at Tulane	+12	27-24 W	u48	
10/1					
10/8	at Troy	+7	10-27 L	u44	
10/15	Arkansas State	-4	20-19 L	u43	
10/22	at Texas State	-2	20-14 W	u43	
10/29	UL-Lafayette				
11/5	Georgia State				
11/12	at Coastal Carolina				
11/19	South Alabama				
11/26	at UL-Monroe				

Stanford (SU: 3-4, ATS: 2-5, O/U: 3-3)

Date	Opponent	Line	Score	ATS	O/U
9/3	Colgate	-40	41-10 L	u51	
9/10	USC	+9	28-41 L	u66	
9/17					
9/24	at Washington	+14	22-40 L	p62	
10/1	at Oregon	+17	27-45 L	u63	
10/8	Oregon State	+4	27-28 W	u53	
10/15	at Notre Dame	+16	16-14 W	u53	
10/22	Arizona State	-3	15-14 L	u52	
10/29	at UCLA				
11/5	Washington State				
11/12	at Utah				
11/19	at California				
11/26	BYU				

Syracuse (SU: 6-1, ATS: 5-1, O/U: 2-4)

Date	Opponent	Line	Score	ATS	O/U
9/3	Louisville	+23	48-14 W	u55	
9/10	at Connecticut	-1	32-29 W	u59	
9/17	Purdue	-10	22-20 L	u53	
9/24	Virginia	-54	59-0 N/A	63	
10/1	Wagner				
10/8					
10/15	NC State	-3	24-9 W	u42	
10/22	at Clemson	+14	21-27 L	u50	
10/29	Notre Dame				
11/5	at Pittsburgh				
11/12	Florida State				
11/19	at Wake Forest				
11/26	at Boston College				

TCU (SU: 7-0, ATS: 5-1, O/U: 5-2)

Date	Opponent	Line	Score	ATS	O/U
9/2	at Colorado	-13	38-13 W	u59	
9/10	Tarleton State	-40	59-17 W	u66	
9/17					
9/24	at SMU	-2	42-34 W	u72	
10/1	Oklahoma	+5	55-24 W	u69	
10/8	at Kansas	-7	38-31 P	u70	
10/15	Oklahoma St-20t	-5	43-40 L	u69	
10/22	Kansas State	-3	38-28 W	u54	
10/29	at West Virginia				
11/5	Texas Tech				
11/12	at Texas				
11/19	at Baylor				
11/26	Iowa State				

Temple (SU: 2-5, ATS: 4-3, O/U: 2-5)

Date	Opponent	Line	Score	ATS	O/U
9/2	at Duke	+9	0-30 L	u51	
9/10	Lafayette	-14	30-14 W	u39	
9/17	Rutgers	+18	14-16 W	u49	
9/24	at Massachusetts	-10	28-0 W	u44	
10/1	at Memphis	+18	3-24 L	u50	
10/8					
10/13	at UCF	+23	13-70 L	u46	
10/21	Tulsa	+13	16-27 W	u53	
10/29	at Navy				
11/5	USF				
11/12	at Houston				
11/19	Cincinnati				
11/26	East Carolina				

Tennessee (SU: 7-0, ATS: 6-1, O/U: 5-2)

Date	Opponent	Line	Score	ATS	O/U
9/1	Ball State	-37	59-10 W	u66	
9/10	at Pittsburgh-ot	-6	34-27 W	u63	
9/17	Akron	-47	63-6 W	u67	
9/24	Florida	-11	38-33 L	u62	
10/1					
10/8	at LSU	-2	40-13 W	u51	
10/15	Alabama	+9	52-49 W	u68	
10/22	UT-Martin	-38	65-24 W	u71	
10/29	Kentucky				
11/5	at Georgia				
11/12	Missouri				
11/19	at South Carolina				
11/26	at Vanderbilt				

Texas (SU: 5-3, ATS: 5-3, O/U: 3-5)

Date	Opponent	Line	Score	ATS	O/U
9/3	UL-Monroe	-37	52-10 W	u64	
9/10	Alabama	+21	19-20 W	u64	
9/17	UTSA	-13	41-20 W	u57	
9/24	at Texas Tech-ot	-7	34-37 L	u60	
10/1	West Virginia	-7	38-20 W	u61	
10/8	Yoklahoma	-7	49-0 W	u65	
10/15	Iowa State	-15	24-21 L	u58	
10/22	at Oklahoma St	-6	34-41 L	u48	
10/29					
11/5	at Kansas State				
11/12	TCU				
11/19	at Kansas				
11/26	Baylor				

Texas A&M (SU: 3-4, ATS: 3-4, O/U: 2-5)

Date	Opponent	Line	Score	ATS	O/U
9/3	Houston St	-36	31-0 L	u54	
9/10	Appalachian St	-18	14-17 L	u54	
9/17	Miami (FL)	-6	17-9 W	u51	
9/24	at Arkansas	-1	23-21 W	u51	
10/1	at Mississippi St	-4	24-22 L	u51	
10/8	at Alabama	+24	20-24 W	u48	
10/15					
10/22	at South Carolina	-3	24-30 L	u44	
10/29	Ole Miss				
11/5	Florida				
11/12	at Auburn				
11/19	Massachusetts				
11/26	LSU				

Texas St (SU: 3-5, ATS: 4-4, O/U: 3-5)

Date	Opponent	Line	Score	ATS	O/U
9/3	at Nevada	-2	14-38 L	u51	
9/10	FIU	-14	41-12 W	u62	
9/17	at Baylor	-7	34-0 W	u53	
9/24	Houston Baptist	-27	34-0 W	u65	
10/1	at James Madison	+22	13-40 L	u51	
10/8	Appalachian St	+19	36-24 W	u54	
10/15	at Troy	+16	14-17 W	u47	
10/22	Southern Miss	+2	14-20 L	u43	
10/29					
11/5	at UL-Monroe				
11/12	at South Alabama				
11/19	Arkansas State				
11/26	UL-Lafayette				

Texas Tech (SU: 4-3, ATS: 4-3, O/U: 5-2)

Date	Opponent	Line	Score	ATS	O/U
9/3	Murray State	-38	63-10 W	u63	
9/10	Houston-20t	-4	33-30 L	u62	
9/17	at NC State	+10	14-27 L	u55	
9/24	Texas-ot	+7	37-34 W	u60	
10/1	at Kansas State	+7	28-37 L	u56	
10/8	at Oklahoma St	+11	31-41 W	u65	
10/15					
10/22	West Virginia	-5	48-10 W	u65	
10/29	Baylor				
11/5	at TCU				
11/12	Kansas				
11/19	at Iowa State				
11/26	Oklahoma				

Toledo (SU: 5-3, ATS: 4-4, O/U: 5-3)

Date	Opponent	Line	Score	ATS	O/U
9/1	LIU	-47	37-0 L	u57	
9/10	Massachusetts	-28	55-10 W	u49	
9/17	at Ohio State	+31	21-77 L	u63	
9/24	at San Diego St	-2	14-17 L	u44	
10/1	Central Michigan	-6	38-17 W	u56	
10/8	at No. Illinois	-6	52-32 W	u59	
10/15	Kent State	-7	52-31 W	u62	
10/22	at Buffalo	-7	27-34 L	u56	
10/29	at Eastern Michigan				
11/5					
11/12	Ball State				
11/19	Bowling Green				
11/26	at Western Michigan				

Troy (SU: 6-2, ATS: 6-2, O/U: 3-5)

9/17	at Appalachian St	+14	28-32	W	
9/24	Marshall	+3	16-7	W	
10/1	at W. Kentucky	+5	34-27	W	
10/8	Southern Miss	-7	27-10	W	
10/15	Texas State	-16'	17-14	L	
10/20	at South Alabama	+3	10-6	W	
10/29					
11/5	at UL-Lafayette				
11/12	Army				
11/19	UL-Monroe				
11/26	at Arkansas State				
Tulane (SU: 7-1, ATS: 7-1, O/U: 3-5)					
Date	Opponent	Line	Score	ATS	O/U
9/3	Mississippi State	+28	42-10	W	