

Justice! Applies to all provinces.

Justice a basic human need, is essential for a community to function, survive. Justice has to establish Truth, rectify 'Injustice'. It starts with You! You need to be 'Just'. Being Just the foundation for Justice to rise up. Being Just and receiving Justice is ideal. Reality is there are unjust people who create 'In Justice'. **Each individual has a moral, civil duty to remove Injustice.**



Justice Prayer

1 God is waiting to here from You!

Dear **1 God**, Creator of the most beautiful Universe
Your most humble faithful custodian guardian (1st name)
Requests help with being just
Requests help with removing injustice
Requests punishing of injustice now and in the Afterlife
Let the Good thrive and Evil shrivel
For the Glory of **1 God** and the Good of Humankind



This prayer is used when encountering injustice or justice is absent.



Evil anti 1 God injustice!

The adversarial system is elitist. The adversarial approach is all about winning at any cost (**bad, corrupt, criminal, immoral, unfair, unjust**). The legal team with the best negotiator and the most resources, funds, wins. Disregarding, truth, guilt! This legal system is favored by Hereditary Tyrants, Monarchists, Political Tyrants, Parasitic predatory profiteers, Rich, Wealthy, Criminals.

The have too much go Free! The have not enough go to Prison!

The adversarial, approach, system ends! Everyone involved is held accountable! **Accountability is backdated!**

People live in social groups (**communities**). Communities need 'Laws' (**Rules, Regulations**) to function, survive. When there appears a breach of Law, 'Truth' must be found. Should their be a breach of Law, 'Accountability' needs to follow. Accountability may find guilt, establish loss. **Guilt leads to mandatory 'Rehabilitation'**. Loss is compensated.

To have Justice you need Laws, that are made by Government, upheld by Courts. Laws need administering. Alleged breaches of Rules are investigated by, Marshall's' Office (**Province**). Alleged breaches of Regulations are investigated by, Sheriffs' Office (**Shire**).

When things or events happen Justice is to establish Truth :
What happened ? > What caused the happening ? > Was human ignorance involved ? > Was human negligence involved ? > Was human evil involved ? > How to give justice through compensation and rehabilitation. > What lessons can be learned from this happening ?

Custodian Guardian want the real truth found. This is only possible when all officers of a court (judges, prosecution, defense) cooperate (join). The adversarial justice is not justice. It is corrupt, elitist, it is there to protect the 'have too much' and the guilty.

Adversarial is not about truth or justice, innocent or guilty. But, winning! The side with the better lawyer wins regardless if they are guilty or not. **This Ends! No more adversarial injustice.**

After **charges** are laid: The Marshall (Province) sets a date (90 days later) when the charges are heard at 'Court'. The Marshall then selects from a pool of Barrister, 7 who join to find real Truth. 3 will act as Judges, 1 as Prosecutor, 1 as Advocate, 1 as Researcher and 1 as Enforcer.

Note! There is no Jury.



After **charges** are laid: The Sheriff (Shire) sets a date (30 days later) when the charges are heard at 'Chambers'. The Sheriff then selects from a pool of Lawyers, 5 who join to find real Truth. 1 will act as Magistrate, 1 as Accuser, 1 as Guide, 1 as clerk and 1 as Procurer.

Courts there are 2: Provincial Trial Court (PTC) and Shire Hearing Chamber (SHC). Appeals are heard in both. Both operate from 1 hour after sunrise to 1 hour before sunset 6 days a week 52 weeks a year!

Note! There is no civil litigation. Both Courts handle 'Accountability and compensation'.

Justice is mandatory, accumulative sentencing. Mandatory sentencing brings consistency of sentencing, an appearance of equality. Prevents corrupt, incompetent Officer of the Court interfering with sentencing. Accumulative sentence stops rewarding serial, repeat offenders.

Death Penalty (Execution) as punishment is anti **1 God**, anti Specie, a crime, unacceptable. Any Government that executes is removed, accountable, **MS R7**. Any person participating in an execution is accountable, **MS R7**.



There are 3 age groups (Teenage, Juvenile, Adult) to consider when sen-

tencing. Pleading 'Guilty' or found guilty influences sentence. Rehabilitation is 'R' rated (MS R1-7). 'R' rating in Law Giver Manifest applies to adult pleading guilty.

Law

To have Justice you need Laws, which are made by Government and upheld by Courts. There is only 1 Law, 'Legislated Law'. Legislated Law is based on the 'Law Giver Manifest'. There are no precedents. Previous decisions by courts are ignored. Laws are administered, enforced by law enforcement Officers (Marshall's, Sheriff's).

Law, must punish injustice, uphold community standards (equality, community duties, community rights) give the appearance of 'Fair'.

Laws are to protect the weak and keep honest the powerful! Laws ensure, that a community is secure and lives in 'Harmony' with itself the local habitat and greater environment.

Bad Law

Bad Law is unjust, corrupt, evil. This Government legislation allows a minority to take advantage of the majority through parasitic predatory profiteering, exploiting (ripping off). Bad Law is rejected by Officers of the Court and replaced by Parliament. Government that establishes or lets Bad Law exist. Is voted out of office, held accountable, 'MS R7

Freehold land is public land plundered from a community by corrupt criminal government. This government either gave away land (squatting) or sold it to criminal greedy profiteers (developers, land speculators). Freehold Ends! Confiscate all private owned land, buildings without giving compensation. Prosecute any organization or individual profiteering from freehold, real estate (Chain of Evil). Shire owns all land.

1 God created Planet Earth to be used and enjoyed equally by all of Humankind. Freehold land and privately owned dwellings are insulting to **1 God**. Every piece of real estate on this planet or any other place in the Universe belongs to the community (Shire) for the equal benefit of all.

No private beaches, islands, lakes, rivers,..

Copyright Patents is the greedy application of intellectual property. A Community gives people the means  **PATENT PENDING**

and opportunity to develop intellectual property. Therefore all intellectual property is community property to be used by all! Selfish use and profiteering from intellectual property is plundering a community a crime to be prosecuted: 'MS R6'.

Privatization of Community assets. Utilities: Power (Electricity Gas), Water (Desalinization, Pipes, Reservoirs, Sewerage); Public Transport

(local, long distance), Freight long haul (Air, Sea, Land, Space); Communication (Internet, Satellite, Television, Radio, Mail). Confiscate all privatized community assets without giving compensation. Then turn them into CROn. Prosecute a person or organization profiteering from privatized community assets, **MS R6**. Government privatizing of public assets is stealing from the community. It is replaced! Its members and Government employees participating in this crime, get: **MS R6**

Tax deductibility Donation is legalized, tax avoidance' by corrupt Government. Tax avoidance is stealing from a community by the well off! Cancel tax deductibility donations, tax avoidance, tax haven, tax minimization. Government that facilitates tax deductible donations is replaced + **MS R6**



Donate because you care and like to share.

Corrupt Law

Corrupt Law is unacceptable corrupt immoral unjust Law. Corrupt law creates injustice and inequality it is to be rejected by Officers of the Court and replaced by Parliament. Backdating legislation is enacted to have all existing corrupt law retried and mandatory Sentencing applied.

Diplomatic Immunity is unacceptable nobody is beyond accountability for crimes committed. Diplomatic Immunity allows foreigners to commit crimes without accountability. Diplomatic Immunity is revoked and crimes prosecuted.

Double Jeopardy allows a criminal to go free without Rehab. Sometimes incompetent prosecution or cunning defense result in injustice a 'Not Guilty' verdict for a guilty. When new evidence is available a retrial becomes necessary. The 'Double Jeopardy' principle prohibits this from occurring. It Ends! Guilty are retried. This principle is corrupt law. No crime goes unpunished. If new evidence surfaces there must be always new prosecution possible until total Truth has been achieved.

Immunity from Prosecution is unacceptable nobody is above punishment for crimes committed. Lazy, ignorant, corrupt prosecution uses criminals to do their work and rewards them with immunity. Immunity of a criminal is revoked, prosecution proceed. Lazy corrupt prosecution is prosecuted, serve the same sentence as the criminal they used.

Plea Bargaining the most corrupt, dishonest form of Law, it Ends! Plea bargaining is criminal behavior that stops a criminal from getting deserved rehabilitation. A corrupt prosecutor allows a criminal to choose a lesser charge. Criminal is recharged. Corrupt Prosecutor gets maximum: **MS R7**.

Statute of Limitations is unacceptable there is no limit on accountability. Statute of Limitations is replaced with prosecuting. There can never be a time limit on, Accountability.

Professional, Religious Privilege hinders finding Truth. Doctors, Priests, Lawyers, Reporters, claiming client privacy to not answer questions in Court. These privileges End. So not to interfere in finding Truth. Witnesses who refuse to answer are caged until they answer (no professional, religious confidentiality exemption). **1 God** practices Accountability.



1 God's Justice



Judgment Day > Purity Scales (Scroll 7)
Relive Prayers **Note!** A person cannot lie, play dumb with **1 God**.

Courts

The purpose of Courts is to establish 'Guilt' or 'Absence of Guilt' for alleged breaches of Rules (**Provincial Law**) or Regulations (**Shire Law**). The tool used to establish, if there were breaches, is to establish Truth. Truth is found by cooperation not adversarial. Unjust, corrupt adversarial Court system is replaced by: Just, fair, cooperating Court system that establishes Truth, hands out mandatory sentences!

When things or events happen Courts establish Truth :

What happened ? > What caused the happening ? > Was human ignorance involved ? > Was human negligence involved ? > Was human evil involved ? > How to give justice through compensation and rehabilitation. > What lessons can be learned from this happening ?

Truth must be established regardless of any plead. Pleading guilty does not hinder finding Truth. The Accused must answer all questions. Refusal to answer brings on, **MS R7** without the option of appeal. Witness who refuse to answer are caged until they answer (there is no professional or religious confidentiality exemption). The pursue of 'Truth' continuous to make sure there are no other guilty. False witness: **MS R3**.

Courts there are 2: Provincial Trial Court (**PTC**), Shire Hearing Chamber (**SHC**). Appeals are heard in both. There is no civil litigation, no Juries. Both Courts handle 'Accountability, compensation'. Courts are open from 1 hour after Sunrise to 1 hour before Sunset, 6 days a week. All 'PTC' Court officials are supplied by the Marshall's' Office from a numbered pool of 'Barrister'. All 'SHC' Chamber officials are supplied by the Sheriffs' Office from a numbered pool of 'Lawyers'.

A trial prayer is recited at beginning of each trial:

Trial Prayer

Dear **1 God**, we the Officers of the Court ask for guidance
We shall endeavor to find truth
We won't let fear or favor corrupt us
We will hand out mandatory Sentences
We will protect justice from bad, corrupt, discount Laws
We endeavor to rehabilitate all misguided Souls
For the Glory of **1 God** and the Good of Humankind
This prayer is recited at the start of a trial.



PTC : 'Provincial Trial Court' tries cases, if 'Guilt' is established 'MS R' is served in Provincial Rehabilitation. There are 7 Court officials, 3 Judges, Prosecutor, Advocate, Researcher and Enforcer. They cooperate (**work together**) to find 'Truth', establish 'Guilt' or absence of 'Guilt'. The Re



searcher compiles all evidence. The En-forcer secures court, sets up evidence displays, ensures 'Accused' and witnesses appear.

After 'Truth' is found victims make a statement which includes compensation request. The Judges then retire for 1 hour to prepare Justice. The Judges decide separately by a majority of 2 'Verdict', 'Compensation'. Appeals by Victims (**Compensation**), Accused (**Verdict**) are lodged within 7 weeks. Appeals are heard at the same Court, different Judges.

SHC : 'Shire Hearing Chamber' tries cases if 'Guilt' is established 'MS R' is served in Shire Rehab. There are 5 Court officials, Magistrate, Accuser, Guide, Clerk, Procurer. Magistrate, Accuser, Guide, cooperate (**work together**) to find Truth, establish 'Guilt or 'Absence of Guilt'. The



Clerk compiles all evidence. Enforcer secures court, sets up evidence displays, ensures accused witness appear.

After 'Truth' is found Victims make a Statement which includes compensation request. The Magistrate then retires for 1/2 hour to prepare Justice, 'Verdict', 'Compensation'. Appeals by Accused (**Verdict**), Victims (**Compensation**) are lodged within 3 weeks. Appeals are held at the same Court, different Magistrate.

Space exploration, colonization need rules (**laws**) a Space Exploration Court (**S>X C**). S>X C rulings are binding for all Provinces! This court has 7 Judges (1 from each Province). Judgment comes by secret ballot, majority vote. **Minimum majority 4.**

Inner Space Laws (1) cater for Earth Space and Earth Moon. Outer Space Laws (2) cater for Planet Exploration, Colonizing. Space laws are un-
 pired, administered, enforced by S>XC. (see space law)

Sentencing

When there appears a breach of Law, 'Truth' must be found. Is there a breach of Law, 'Accountability (guilt)' follows. Guilt leads to mandatory sentencing, 'Rehabilitation', loss is compensated.



Justice is **Mandatory Sentencing (MS)** accumulative, non consecutive. MS brings consistency of sentencing, an appearance of equality. Prevents corrupt and incompetent Officer of the Court interfering with sentencing. MS ends corrupt, unjust 'Discount Sentencing' (Suspended sentence, No conviction recorded, Early release, Parole, Pardon..).

Serial Criminal should not be rewarded. Multi guilty finds criminal should not be rewarded by consecutive serving of sentences (Discount Sentencing). Non consecutive serving of Sentence is Justice.

Accumulative Sentencing is used for repeat 'Offenders'. Repeat offenders have not learned from their previous Rehabilitation. Therefore need to redo the Rehabilitation. Past and present sentencing are combined, given a total rehabilitation time.

Comparison Sentencing for 'Criminal (A)'

Guilty finds	Corrupt	Justice
1 st offense guilty finds: 7+7+7 years	7 years (Consecutive) Paroled after 3 years served 3 years	21 years served 21 years
Re offends: 7+7 years Past offense: 7+7+7 years	7 years (Consecutive) 0 years (past ignored) Paroled after 3 years served 3 years	14 years + 21 years = served 35 years
Total for all offenses	6 years mocking Justice	35 years 'Justice'

You do the Crime !!! >>> You do the Time !!!



Basics

An accused found 'Guilty' is a criminal. Every conviction has a mandatory sentence. There is no plea bargaining. No reduction in sentence, immunity or sentencing suspension.

Multi guilty finds, sentence for each guilty find are added together,

totalled. This total is to be served non consecutive in full. No discount sentencing for serial criminals.

Repeat Offenders have not learned from their previous Rehab. Therefore need to redo rehabilitation. Past and present sentencing are combined, given a total accumulative Sentence which is served in full. No Early release, Parole, Pardon...

There are 3 age groups (Teenage, Juvenile, Adult) to consider when sentencing. Pleading 'Guilty' or found guilty influences sentence. Rehabilitation is 'R' rated (MS R1-7). R rating in Law Giver Manifest applies to adult pleading guilty.

Total Sentence decides which rehabilitation is applied. Adult pleads guilty to 3 times 'R4' ($3 \bullet 7 = 21$ years) 21 years: 'Criminal Rehab'.

Discount Sentencing

Discount Sentencing is corrupt, unjust it is annulled. Backdating legislation is enacted to have all existing discount sentences resentenced.

Discount Sentencing is replaced by: **MS R1-7**

Serving Sentences consecutively: Criminal is rewarded for being a serial criminal having his sentence reduced. **This Ends!**

Past Sentences are ignored when Sentencing. Ignoring criminal who has not learned from past rehabilitation is dishonest unjust. **It Ends!**

Suspended Sentence? A criminal is found guilty, gets his sentence suspended and goes free. This type of sentencing is criminal, wasting resources, time of Court and Law enforcement. **It Ends!** Court officer that hands out Suspended Sentences is removed: **MS R7** Backdating legislation is enacted to have all existing suspended sentences resentenced.

Parole and Early Release! Are corrupt and unjust. They both end. Members of Parole board are prosecuted, **MS R7** Backdating legislation is enacted to have all existing suspended sentences re-sentenced.

Guilty but not Guilty a criminal is found guilty! The guilt is not recorded guilty goes free. A She is brutalized, He is found guilty, his guilty find is ignored so it will not interfere with his celebrity status so he can sign Million \$ radio contracts. **This Ends!** Court officer that hands out guilty but not guilty Sentences get's: **MS R7** Legislation is backdated, to have all existing unrecorded guilty verdicts recorded, resentenced.

Mandatory sentencing accountable fair Justice

Justice need's a Court Media

People have a right, a need to see, hear all parts of Justice, how it works. A Court is not used for propaganda, entertainment, public relations or Media Circus. There is no



video taping of trial, discreet security cameras are used. Covering face is not allowed. **MS R3**

There is no media video taping of trial. Allowing media video at trial turns trial into entertainment. When facing cameras Judge, Magistrate, Prosecutor, Defense (**Barrister, Lawyer**), accused, witnesses behave different than they would if there were no cameras. People will not act and behave natural. Under mining the reading of body language, facial expression, tone of voice, usage of language. People would dress different to create an unnatural image. Under mining integrity of court proceedings turning them into theater. Unjust, not acceptable, or happening!

Before Trial

Media reporting before Trial is limited to name of Accused, which Court, date of Trial. Any other reporting (**charges, witness names, court officials, opinions, comments...**) is contempt of Court: **'MS R3'**

During Trial

There is a Media ban on reporting during trial. Media breaking ban is in contempt of court: **'MS R3'**

After Trial conclusion

Media gives a 'Detail Trial Report' after trial conclusion: Who was accused (**picture, address, employer, parents**)? What were the charges? Court officials.. Verdict, reasoning, rehabilitation, compensation if any. Media should give an opinion and comment.

Judge (**Magistrate**) cannot (**ever**) suppress detailed reporting by Media for any reason (**national security, privacy, corrupt law..**).

Appeal

Once an appeal has been lodged. Media reporting before Trial, during Trial and after Trial rules apply.

Freedom of Detail Trial reporting is sacred

Suppressing order means protecting, guilty. Protecting them a threat to the Community. A community has a right to know a Guilty's (**picture, address, employer, parents**) and a victim(s) details. The appeal result, reasoning (Detail Trial Report). Any denial (Judge suppression order after appeal) of this activity gets **MS R7**.

A community has a right to know a guilty's details. It helps a community protect itself from evil, crime.. A community has a right to know a victim(s) details. This enables a community to give maximum assistance. Any Judge, Magistrate issuing a suppression order after Trial, Appeal is removed from the Judiciary. Their Professional credentials are canceled, is prosecuted, **MS R7**. Any Guilty protected by a Suppression order

committing a crime(s). A Judge, Magistrate that issued this Suppression order is guilty by association (being a threat to the community). Their Professional credentials are canceled, is prosecuted, **MS R7**. Any Victim affected by a Suppression order. Not getting community help needed. A Judge, Magistrate that issued this Suppression order is guilty of dereliction of duty to a member of the community. Their Professional credentials are canceled, is prosecuted, **MS R7**.

Rehabilitation

Rehabilitation is administered by Marshals, Sheriffs. Rehabilitation involves education, asset seizures, caging. Rehabilitation reforms guilty, protects the Community! It is the 'Just' form of accountability. It protects the community, helping guilty become useful citizen. Rehabilitation has 7 grades **R 1-7**. There are 2 types of rehabilitation, Shire and Provincial. Which of the 2 apply depends on age, MS R1-7 grade. There are 3 age groups, Teenage (8-14), Juvenile (14-17 She, 14-18 He) and Adult (She 17+, H 18+) Children under 8 years are not prosecuted. Parents and educators deal with them.

A **Shire** provides 2 types of rehabilitation, 'Education Shire Rehab (ESR) and Duties Shire Rehab' (DSR).

7 R Teenage (8-14) Shire Rehab

*Pleading Guilty (confession+all details of wrongs) #Found Guilty

R1 ESR *1 week #2 weeks _ **R2 ESR** *2 weeks #4 weeks

R3 ESR *4 weeks #8 weeks _ **R4 ESR** *8 weeks #16 weeks

R5 ESR *16 weeks #32 weeks _ **R6 DSR** *1 year #2 years

R7 DSR *2 years #4 years When 15 transferred to Juvenile Rehab!

7 R Juvenile (14-17 She, 14-18 He) Shire Rehab

R1 ESR *2 week #4 weeks _ **R2 ESR** *4 weeks #8 weeks

R3 ESR *8 weeks #16 weeks _ **R4 ESR** *16 weeks #32 weeks

R5 DSR *1 year #2 years _ **R6 DSR** *2 years #4 years

R7 DSR *4 years #8 years When 17+ (She) 18+ (He) transferred to Provincial Rehab!

7 R Adult Provincial Rehab (PR)

R1 ESR *1 year #2 years _ **R2 DSR** *2 years #4 years

R3 Cage PR *4 years #8 years

R4 2nd chance PR *8 years #16 years

R5 Criminal PR *16 years #32 years

R6 Hardcore PR *32 years #64 years

R7 Judgment Day PR *64 years #until death

Accused pleads Guilty gets a total of 27 years: **MS R5 Criminal PR**

Accused pleads Not Guilty, found guilty gets a total of 10 years: **MS R3**

Cage PR applies.

A Guilty is explained his wrong doing, taught to apologize, how to make amends, become a useful member of the Community. No more disgracing the family, rehabilitate, help other misguided Souls to do the same! '**Rehab Prayer**', is used every morning by Rehabilitator.

Rehab prayer

Dear **1 God**, Creator of the most beautiful Universe
I apologize for my wrong doing
I shall make amends
I pledge to become a useful member of the community
I shall no more disgrace my family
I endeavor to rehabilitate myself and all other misguided Souls
For the Glory of **1 God** and the Good of Humankind
This prayer is recited every morning by Rehabilitator.



Shire Rehab

A **Shire** provides 2 types of rehabilitation, Education Shire Rehab (ESR) and Duties Shire Rehab (DSR). Both rehabilitation cater for 3 age groups, teenage, juvenile and adult. Teenage (8-14) When 15 transferred to Juvenile Rehab! Juvenile (She 14-17, He 14-18) When 17+ (She) 18+ (He) transferred to (PR) Provincial Rehab! Rehabilitator has to pay for rehabilitation.

Education Shire Rehab ESR

ESR is 1st on the Rehabilitation scale. It is a non cage rehab. A rehabilitator stays home overnight (pays for rehabilitation). The Education rehabilitator is picked up from home 6 days a week 1 hour after Sunrise (T.T.) to do 5 days of community service +1 day of education. 1 hour before Sunset (T.T.) the rehabilitator is taken home. Rehabilitator has every 2 hours a 10 minute (toilet, food, drink) break.

Duties Shire Rehab DSR

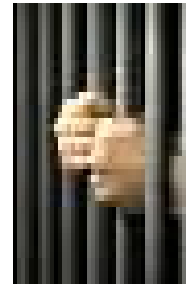
Duties Rehab is through education and duties. Rehabilitator pay's for rehab. The Duties Rehabilitator is picked up from home 1 hour after Sunrise (T.T.), day 1 of the week. Doing 5 days of community service +1 day of education. On day 6, 1 hour before Sunset (T-T) a Rehabilitator is taken home. A Duties Rehabilitator (DR) starts duties 1 hour after Sunrise (T.T.). 'DR' has every 2 hours a 10 minute (toilet, food, drink) break. DR is confined for the night but goes home for Fun-Day.

(T.T.) Time Triangle, Custodian Guardian New Age time management

Provincial Rehab

The Province provides 5 types of caged rehabilitation: Cage, 2nd chance, Criminal, Hardcore, Judgment Day. There are separate compounds for He and She. Pregnant She's have there new born taken away. He's that stick their penis or ejaculate into another He's anus (**homosexual Rape**) or mouth (**depraved, disgusting, unnatural**). Have their penis removed at the rump.

Provincial Rehabilitator (**PR**) are kept overnight in a 3 m³ cube. A cubes floor, walls, ceiling, consist of cyclone, fire, high humidity resistant precast concrete panels with gray pigment surface finish. The front consists of steel bars, a steel bars door. It faces a hallway. There are no windows. There is no back wall to the outside. Hallway lights go off at Sunset and on at Sunrise.



There are 2 bunk beds flush against steel bars. Against the back wall is 1 steel toilet no seat or lid. A cube is home to 4 rehabilitator. He has to shower, shave every 6th day of the week. She has to shower (6th day). No personal items are allowed accept for a copy of, 'LGM'.

PR do not get paid. Cannot receive money, gifts or extras. Cannot vote! Cannot be elected!

Cage Provincial Rehab

New Arrival has to hand in their gear, toiletries, jewelry and all other personal items. Are weight, shower, shave, have tattoos removed, have 2 tracers implanted in their body. 1 Tracer contains ID information and is a short distance emitter. The 2nd is a Satellite Tracer. Rehabilitator have their name replaced by a number.

They receive numbered 'PR' gear, a copy of a 'Law Giver Manifest'. PR are shown their home cube, bunk. At day's end they are introduced to the other bunks PR. Bunk mates explain the daily routine.

PR have no personal items. Cannot have physical contact with visitors or receive anything from them. No communications with outside except with visitor.

Daily routine 6 days a week at Sunrise (**T.T.**) a siren awakes PR.

They put on their gear and footwear, go toilet, state to the other bunk mates their crimes and all together they worship: **Rehab Prayer**. Cube door opens, they move to the assemble area. They receive daily rations (**food,drink**) move on to compound work chapel or transport. Blubbery (**overweight**) PR get no food (**until they have correct weight**) only drink.

PR work from 1 hour after Sunrise. Have 3, 10 minute (toilet, drink, eat) breaks. Stop at 1 hour before Sunset. PR working outside compound are taken back. After work they wash face, hands, receive snack pack and drink. Go back to their home cube. Hallway lights go out at Sunset (T.T.). There are no lights in PR home cube.

Day 7 (Fun-Day) starts as the previous 6 days. PR move to their Group (28) assemble area. Group Worship: **Daily Prayer**. Receive morning snack pack with drink, discuss, Law Giver Manifest. Midday (noon) receive lunch pack with drink, worship: **Thank You Prayer**. Listen to music. Receive after noon snack pack with drink, worship: '**Thank You Prayer**'. Watch movie. Then the same as after work.

PR obligations! Be non violent, work hard, worship daily, show respect to PR staff, volunteers and visitors. Repent! Rehabilitate! PR privileges. Have 4, 1 hour visits a year. Free Medical.

2nd Chance Provincial Rehab

The same as 'Cage PR' + more restrictions.

New Arrival their 'Holy Matrimony' Contract, Companionship Contract is canceled. All communication, contact with mate, partner, children end. **Day 7 (Fun-Day)** movie is replaced with meditating, prayer. PR privileges. Have 3, 1 hour visits a year. Free limited (essential) Medical.

Criminal Provincial Rehab

The same as '2nd Chance PR' + more restrictions. **Day 7 (Fun-Day)** music is replaced with silence. PR privileges. Have 2, 1 hour visits a year. Medical, first aid only.

Hardcore Provincial Rehab

The same as 'Criminal PR' + more restrictions. **Daily routine 6 days a week** do extra hard, dirty work. PR privileges. Have 1, 1 hour visit a year. Medical, painkillers only.

Judgment Day Provincial Rehab

The same as 'Hardcore PR' + more restrictions. **Daily routine 6 days a week** do unhealthy, dangerous work. PR privileges. None. Rehabilitator who die during Rehabilitation are cremated. Their ashes are spread over the Crematorium compost.

Provincial Law enforcement consists of Marshall, Ranger, and Shire Sheriff, Sentinel.

Marshall

Independent, Investigate, Enforce, Guide, Protect



Marshall's and Sheriff's are independent. They are not appointed or elected. They are the result of a career-path: Apprenticeship, work experience, advanced training, education and promotion by seniority of people with the same qualifications.

Marshall's investigate and enforce breaches of Rules. They do this by the Barrister pool. Marshall's run Rehabilitation, Quarantine, PHeC, PDeC and CE, Crematorium. Marshall's guide the community through public awareness campaigns explaining Provincial Rules (Laws). Individual guidance. Marshall's (Rangers) protect the community, environment, wildlife: Border protection, Wildlife and Vegetation Sanctuaries, Environmental protection,.. Liaise with Sheriff.

Marshall Career path for He

After He completed 'Community Emergency service' (CE). Becomes Trainee Ranger (wmw2) for 3 year's. Then there are 2 sub careers, Barrister or Ranger. Sub careers are decided on individual capabilities and organizational needs. Ranger career is more physical.

After 3 years as 'Trainee Ranger' qualifies to become 'Barrister' or 'Ranger' (wmw3). After 3 years work experience qualifies to attend 'PHeC, Technical College'. Earns after completion 'Supervisor Certificate'.

When there is an opening promoted to 'Researcher' or 'Protector' (wmw4). Researcher, Protector join, 'Marshall Barrister pool'. Protector is a Ranger. After 3 years work experience as 'Researcher' or 'Protector' qualifies to attend 'PHeC, Leadership College' earns after completion 'Leader Diploma'.

When there is an opening promoted to 'Defender, Prosecutor' or 'Custodian' (wmw5). is part of the 'Marshall Barrister pool'. After 3 years work experience qualifies to attend 'PHeC, Leadership College' earns after completion 'Manager Diploma'.

When there is an opening promoted to 'Judge' or 'Curator' (wmw6). Judge, Curator is part of the 'Marshall Barrister pool'. After 3 years work experience qualifies to attend 'PHeC, Leadership Camp' earns after completion 'Administrator Degree' Joins the 'Provincial Adviser pool'.

When there is an opening promoted to 'Marshall' (wmw7). Can only be removed for dereliction of duty. By majority vote (36) of Parliament. Marshall is a career appointment, not a political appointment.

Marshall Career path for She

After She completed a 'Holy Matrimony' contract. Has a, Medical, Education Trade Certificate (see SmeC). She starts work as 'Train

ee Ranger (wmw2)' for 2 year's. Her career path is similar to He's. The 3 year work experience is reduced to 2 years so She can catch up. Promotion opportunity comes through seniority regardless of gender. Judge (wmw6) promotion available! Most senior Defender, Prosecutor, Custodian (wmw5) He or She is promoted.

Marshall Code

MLE (Member Law Enforcement), Marshall, Ranger, Sheriff, Sentinel,.. are there to keep a community safe. A community wants its MLE to be courteous, courageous willing to put their life on the line for the community, have a high moral, professional standard, to be trustworthy, fair. Keep mentally, physically fit. Do not take a life or industrial action. MLE using behavior, mind altering (alcohol, heroin,..) substances is demoted, retrained. 2nd offense goes to the bottom of Seniority. 3rd offense is dishonorable discharged, +MS R3.

MLE commits any crime is dishonorable discharged, prosecuted. Any crime committed having had alcohol doubles Rehabilitation. Drugs in body treble Rehab. MLE interferes with evidence (alters, destroys, fabricates, withholds,..) and or intimidate witnesses is dishonorable discharged, prosecuted, MS R3

There is no place for overweight (blubbery) personal in MLE. Any personal (rank) becoming overweight (not pregnant) is given 3 months to loose the blubber. Failing to do so is asked to resign. Doesn't resign is let go.

Police Unions are destroying the respect and trust the community have in Law enforcement. Police Unions protect members that are incompetent, corrupt, breach moral, civil, criminal law. They encourage their members to think that their wellbeing is more important than that of the community. Not True. Police unions end.

Hurting an MLE employee is violence, assailant, MS R5. Using a belt, stick, weapon, MS R6. Accidental killing (self defense, health, safety), MS R5. Willful killing (assassination, execution), MS R7.

MLE employee is hurt by unprovoked pet, pet owner is prosecuted, MS R3. MLE employee is killed by unprovoked pet. Pet is destroyed owner is prosecuted, MS R4. MLE employee is hurt by provoked pet, MLE employee is educated, put at the end of seniority. No action taken against pet owner. MLE employee is killed by provoked pet. Pet is destroyed owner is not prosecuted.

MLE employee is hurt by unprovoked domestic animal. Domestic animal owner is charged, MS R3. MLE employee is killed by unprovoked domestic animal. Domestic animal is destroyed owner gets, MS R4.

MLE employee is hurt by provoked Domestic animal, MLE employee is educated, put at end of seniority. No action taken against Domestic animal or owner. MLE employee is killed by provoked Domestic animal. Domestic animal is destroyed owner is not charged.

Unprovoked wild animal hurts or kills MLE employee. Animal is destroyed. Provoked wild animal hurts MLE employee. Employee is educated, put at the end of seniority. Wild animal is let go. Provoked wild animal kills LE employee. Animal is destroyed.

MLE employee commits violence: Hurt's others (self defense, does retraining) is dishonorable discharged, **MS R5**. Hurts (excessive force) using a belt, stick, weapon is dishonorable discharged, **MS R6**. Prolonged hurt (torture) is dishonorable discharged, **MS R7**.

Nasty MLE hurt's Pet, Domestic animal, Wild animal, is dishonorable discharged, **MS R3**. Hurts Pet, Domestic animal, Wild animal, using a belt, stick, weapon,.. is dishonorable discharged, **MS R4**. Prolonged hurt (torture) of Pet, Domestic animal, Wild animal, **MS R5**.

Kill's Pet, Domestic animal, (without owners permission) Wild animal (not a Ranger), is dishonorable discharged, **MS R6** (self defense is exempt). Violence against objects (vandalism), dishonorable discharged, **MS R4** (pays compensation)

Kill's people, is dishonorable discharged, prosecuted, **MS R7** Killer Cops fail to protect community. Their excuse of fearfulness, there is no place for cowards, killers in Law Enforcement. Others who protect them, **MS R7**. Their is:

Zero Tolerance to Killer Cops

MLE living by the Marshall 'Code' expect community support and respect.

Justice a community need!
Justice a community duty!
Justice a community right!

