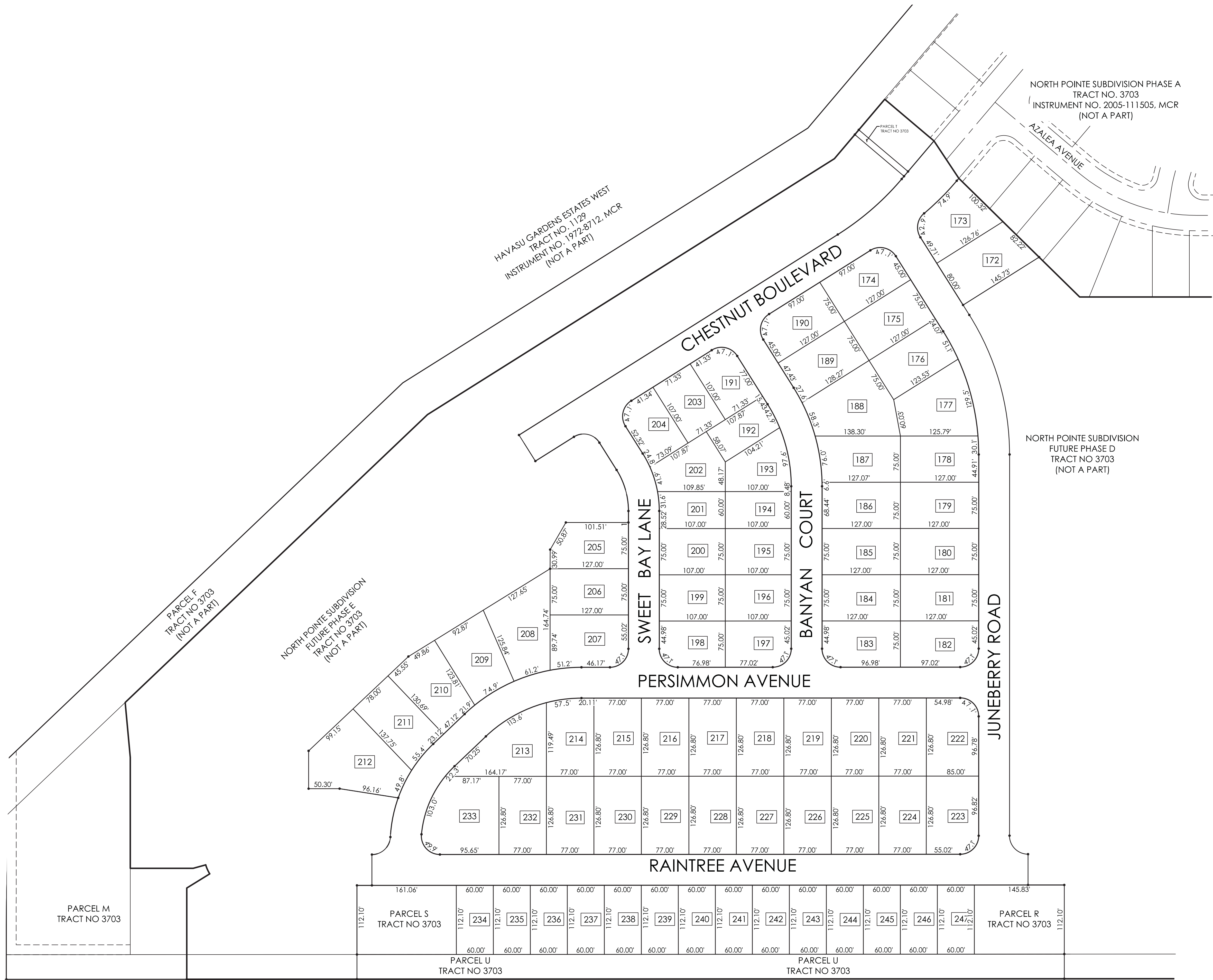


REVISIONS

LOT EXHIBIT
 "NORTH POINT SUBDIVISION - PHASE C"
 A PORTION OF LAND LOCATED IN THE NW 1/4 OF SEC 17, T14N, R20W, G&SRM

PROJECT NO: 16027
 DRAWING DATE: 10/01/2018
 DRAWN BY: JR
 CHECKED BY: PV
 DRAWING SCALE: AS SHOWN
 DRAWING FILE: 16027_PHC_Lot Plan



APN 120-04-005
 UNSUBDIVIDED
 (NOT A PART)

PARCEL TABLE - AREA & USE

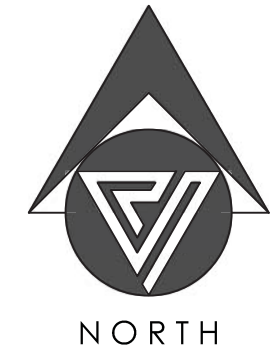
PARCEL	AREA	USE
R	16,348 SF / 0.375 AC	DRAINAGE
S	18,058 SF / 0.415 AC	DRAINAGE
T	1,046 SF / 0.024 AC	DRAINAGE
U	45,878 SF / 1.05 AC	DRAINAGE
Z	330,644 SF / 7.59 AC	PRIVATE ROADWAYS, INGRESS/EGRESS, AND PUE

LOT DATA

PHASE	LOTS	AVG. LOT SIZE	TOTAL AREA OF LOTS (ACRES)	PARCELS
C	76	9,185 FT ²	16.02 ±	4

LOT AREA TABLE

LOTS #	AREA (SF)	LOTS #	AREA (SF)
172	10,899	231	9,764
173	9,783	232	9,764
174	9,332	233	14,438
175	9,525	234	6,726
176	9,466	235	6,726
177	11,772	236	6,726
178	9,513	237	6,726
179	9,525	238	6,726
180	9,525	239	6,726
181	9,525	240	6,726
182	9,331	241	6,726
183	9,331	242	6,726
184	9,525	243	6,726
185	9,525	244	6,726
186	9,525	245	6,726
187	9,830	246	6,726
188	12,916	247	6,726
189	9,537		
190	9,332		
191	7,439		
192	6,213		
193	8,055		
194	6,420		
195	8,025		
196	8,025		
197	7,832		
198	7,832		
199	8,025		
200	8,025		
201	6,450		
202	8,235		
203	7,632		
204	7,455		
205	8,964		
206	9,525		
207	10,682		
208	12,689		
209	10,274		
210	10,563		
211	10,328		
212	14,943		
213	11,776		
214	9,626		
215	9,764		
216	9,764		
217	9,764		
218	9,764		
219	9,764		
220	9,764		
221	9,764		
222	10,585		
223	10,585		
224	9,764		
225	9,764		
226	9,764		
227	9,764		
228	9,764		
229	9,764		
230	9,764		



NORTH

