



Church Ditch
Water Authority
Est. 1865

ANNUAL CONTRACTUAL USERS MEETING

JUNE 11, 2020



CDWA
Est. 1865

AGENDA

- INTRODUCTIONS
- 2019 DIVERSION REPORT
- 2019/2020 MAINTENANCE ACTIVITIES
- WORK BY OTHERS
- 2020 SNOWPACK
- BUDGET UPDATE
- DELIVERY PROCESS
- REMINDERS
- CIP UPDATE

CDWA
Est. 1865

2019 CHURCH DITCH DIVERSIONS AT CLEAR CREEK

- TOTAL WATER DELIVERED 9,080 AF
- DELIVERY PER INCH 1.59 AF/INCH
(325,850 GALLONS PER AF)
- COST TO USER PER INCH \$97.48 PER AF
- AVERAGE DELIVERY 2009- 2019 1.04 AF/INCH

CDWA
Est. 1865

2019 OPERATING SEASON

- DITCH START-UP BEGAN APRIL 29, 2019
- DITCH FLUSH COMPLETED MAY 2, 2019
- HEADGATES UNLOCKED FOR DELIVERIES MAY 3, 2019
- DITCH CALLED OUT OF PRIORITY AUGUST 26, 2019

CDWA
Est. 1865

2019/2020 MAINTENANCE

- HEADGATE REPLACEMENTS
- VEGETATION CONTROL/REMOVAL
- BANK RE-SHAPING, CLEANING AND REHABILITATION
- FEMA CLOSE-OUT
- AREA 15 DITCH LINING
- LEGACY FARMS CULVERT REPLACEMENT
- HEADGATE 47 INSTALLATION
- SIPHON INSPECTION/REPAIRS
- WEST 8TH CULVERT REPLACEMENT

CDWA
Est. 1865

VEGETATION REMOVAL



Est. 1865

AREA 15 DITCH LINING



AREA 15



HEADGATE 47 INSTALLATION



WEST 8TH CBC



WORK BY OTHER

- JEFFERSON COUNTY – PEAKS TO PLAINS
- CONFLUENCE COMPANIES – BASECAMP DEVELOPMENT
- DENVER WATER – CONDUIT 16 REPLACEMENT
- CITY OF ARVADA – LEE ST. SANITARY SEWER INSTALLATION

CDWA
Est. 1865

PEAKS TO PLAINS



Est. 1865

BASECAMP



CONDUIT 16



LEE ST. SANITARY SEWER



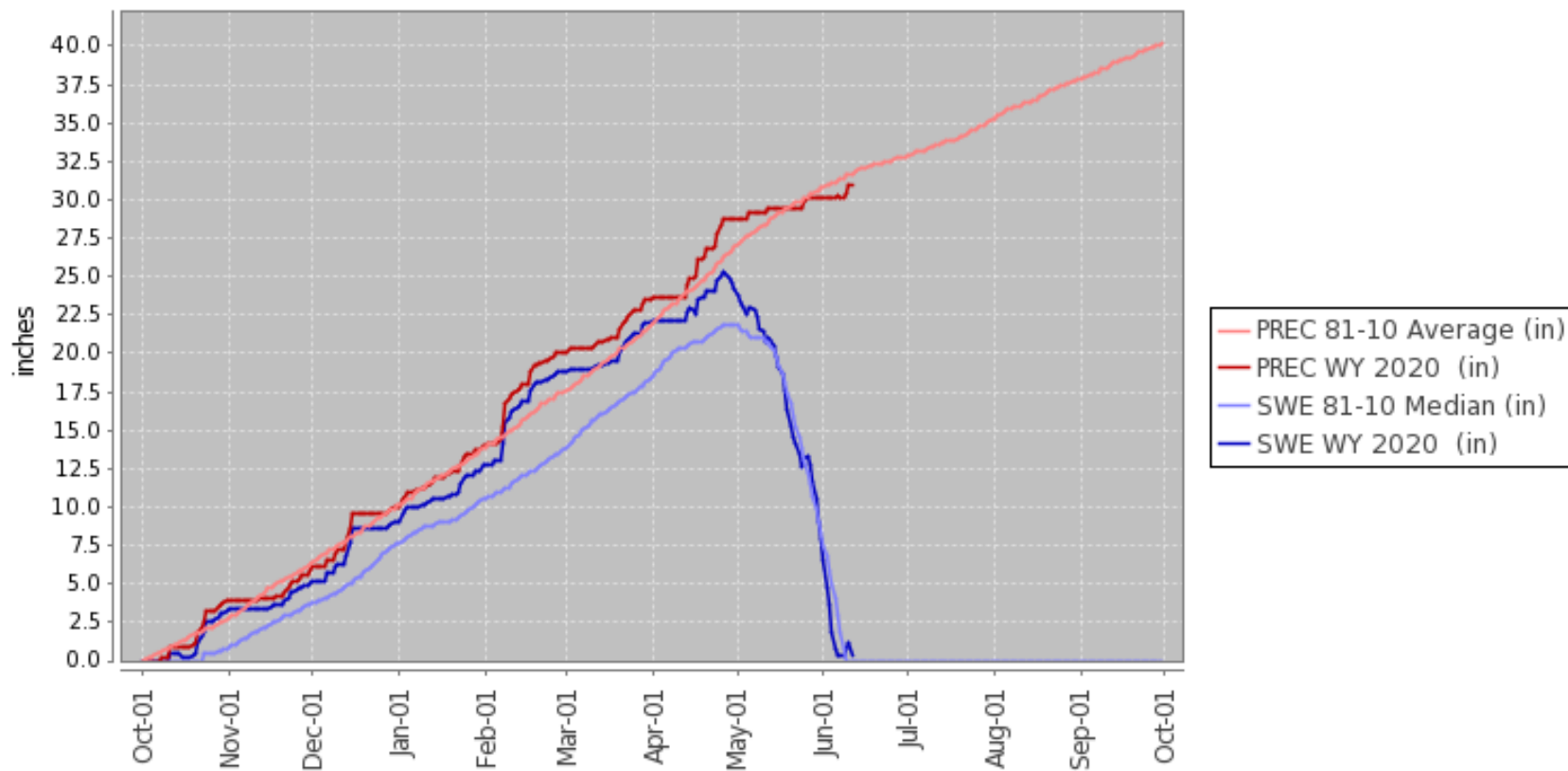
Est. 1865

2020 SNOWPACK

(AS OF 06/11/20)

BERTHOUD BASIN

Station (335) WATERYEAR=2020 (Daily) NRCS National Water and Climate Center - Provisional Data - subject to revision
Thu Jun 11 06:31:31 GMT-08:00 2020

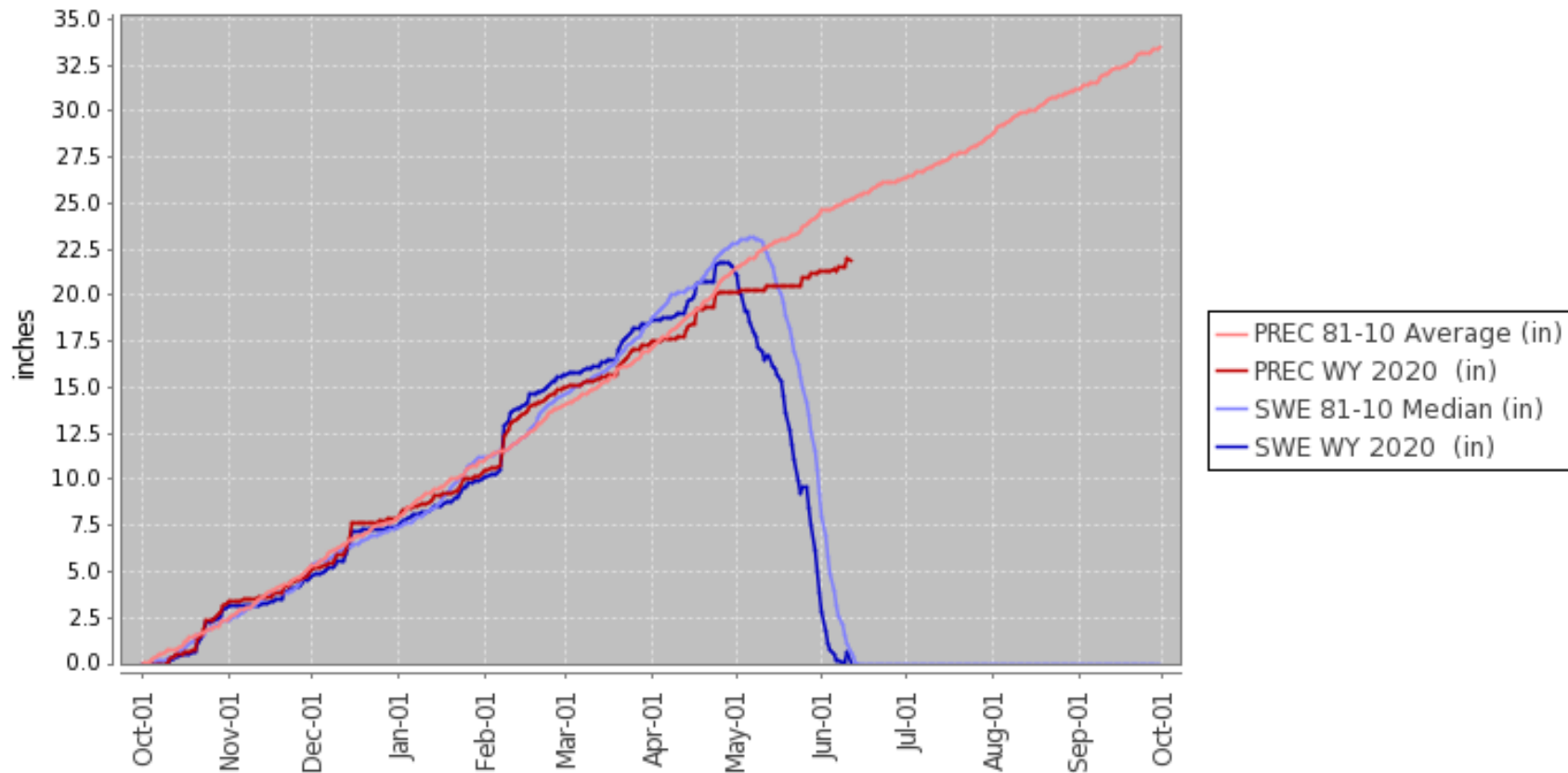


2020 SNOWPACK

(AS OF 06/11/20)

LOVELAND BASIN

Station (602) WATERYEAR=2020 (Daily) NRCS National Water and Climate Center - Provisional Data - subject to revision
Thu Jun 11 06:32:44 GMT-08:00 2020



BUDGET UPDATE

REVENUE

	2019 YE Financials	2020 Adopted Budget
WCRA Reimbursements	\$16,152	\$12,000
CDWA Reimbursements	\$2,946	\$5,000
Assessments	\$889,447	\$970,809
Transfer Fees	\$210	\$100
Crossing Fees	\$7,000	\$1,500
Interest Earned	\$745	\$750
Bypass Reimbursements	\$51,277	\$92,362
Miscellaneous Revenue	\$252,756	\$0
Total Revenue	\$1,220,533	\$1,082,521

OPERATING EXPENDITURES

	2019 YE Financials	2020 Adopted Budget
Legal Services	\$7,796	\$10,000
Engineering Services	\$16,557	\$30,000
Audit and Accounting	\$6,262	\$9,000
General Services	\$6,419	\$10,000
Contracted Services	\$2,980	\$0
Ditch Maintenance	\$53,682	\$50,000
Vehicle Expense	\$7,841	\$15,000
Communication and IT Services	\$14,811	\$20,000
CIRSA Insurance	\$13,718	\$14,000
Operating Supplies	\$27,871	\$30,000
Energy/Utilities/Fuels	\$34,362	\$30,000
Capital Equipment	\$29,440	\$30,000
Payroll Expenses	\$276,432	\$300,856
WCRA Operating Supplies	\$9,010	\$9,000
Total Operating Expenditures	\$507,181	\$557,856

CAPITAL IMPROVEMENT PROJECTS

	2019 YE Financials	2020 Adopted Budget
W. 82 nd Improvements	\$0	\$100,000
Headgate 47, Culvert/Capacity Improvements	\$162,809	\$650,000
FEMA Payments	\$141,747	\$0
Headgate/Flume Replacement	\$21,330	\$25,000
Area 15 Tree Removal	\$17,560	\$0
Area 15 Liner	1,294,866	\$0
Leyden Flush Structure	\$0	\$0
Ford St. Siphon	\$0	\$0
Legacy Farms Pipe	\$9,349	\$0
CIP Reserve	\$62,553	\$60,000
Total CIP Expenditures	\$1,710,214	\$835,000

Est. 1865

DELIVERY PROCESS

- AMOUNT DELIVERED FROM CLEAR CREEK IS DETERMINED BY THE WATER COMMISSIONER AND IS BASED ON:
 - AMOUNT OF WATER IN CLEAR CREEK
 - CALL PRIORITY
 - NUMBER OF INCH-HOLDERS REQUESTING WATER.
- WILL CONTINUE TO DELIVER WATER TO USERS BASED ON THE PRO-RATA AMOUNT AVAILABLE.
 - PRO-RATA IS BASED ON
 - WATER BEING DELIVERED FROM CLEAR CREEK
 - 25% LOSS
 - NUMBER OF INCHES CALLING FOR WATER.
- INCH-HOLDERS WHO HAVE NOT CALLED FOR WATER, WILL NOT HAVE THEIR GATE UNLOCKED.
- LATERALS/HEADGATES THAT DO NOT HAVE ADEQUATE MEASURING DEVICES WILL NEED TO BE REPLACED.
 - AUTHORITY STAFF WILL SEND A NOTICE IF MEASURING DEVICE NEEDS ATTENTION.
- LATERALS/HEADGATES THAT DO NOT REPLACE OR REPAIR MEASURING DEVICES WITHIN 30 DAYS OF NOTICE, WILL HAVE THEIR HEADGATES LOCKED, UNTIL THE MEASURING DEVICE IS DEEMED ACCEPTABLE.

FLUME REQUIREMENTS

- IN ORDER TO DELIVER WATER, FLUMES MUST BE ABLE TO MEASURE FLOW ACCURATELY.
- GATES WITH FLUMES THAT ARE NOT IN PROPER CONDITION WILL **NOT** RECEIVE WATER.
- FLUMES SHOULD:
 - BE IN A SET, PERMANENT LOCATION.
 - BE SET LEVEL ACCORDING TO MANUFACTURER RECOMMENDATIONS.
 - WATER MUST FLOW THROUGH THE FLUME, NOT AROUND.
 - NO HOLES, RUSTING, OR VISIBLE DAMAGE.



REMINDERS

- ASSESSMENTS WERE DUE APRIL 1, 2020.
- PLEASE CALL OR E-MAIL TO REQUEST YOUR WATER. WE WILL NOT OPEN YOUR GATE WITHOUT A FORMAL REQUEST.
 - 303-423-6010
 - NMCCOY@CHURCHDITCH.ORG
- PLEASE MAKE SURE THAT YOUR FLUME AND LATERALS ARE CLEANED PRIOR TO APRIL 1, 2020 IN PREPARATION OF WATER DELIVERIES.
- IF YOU HAVE QUESTIONS ABOUT THE CONDITION OF YOUR MEASURING DEVICE, PLEASE LET US KNOW.
 - WE WILL NOT DELIVER WATER TO A HEADGATE THAT CANNOT MEASURE IT'S DELIVERIES. PLEASE MAINTAIN THESE STRUCTURES.
- THE WEBSITE WILL BE UPDATED FREQUENTLY WITH UPDATES ON PROJECTS AND WITH IMPORTANT INFORMATION.

WWW.CHURCHDITCH.ORG

Est. 1865

2020 PLANNED MAINTENANCE

- CONTINUE VEGETATION REMOVAL
- ROUTINE DITCH SHAPING AND REHAB
- BYPASS CAPACITY IMPROVEMENTS
- CULVERT REPLACEMENTS
- HEADGATE REPLACEMENTS

CDWA
Est. 1865



QUESTIONS?

CDWA

Est. 1865