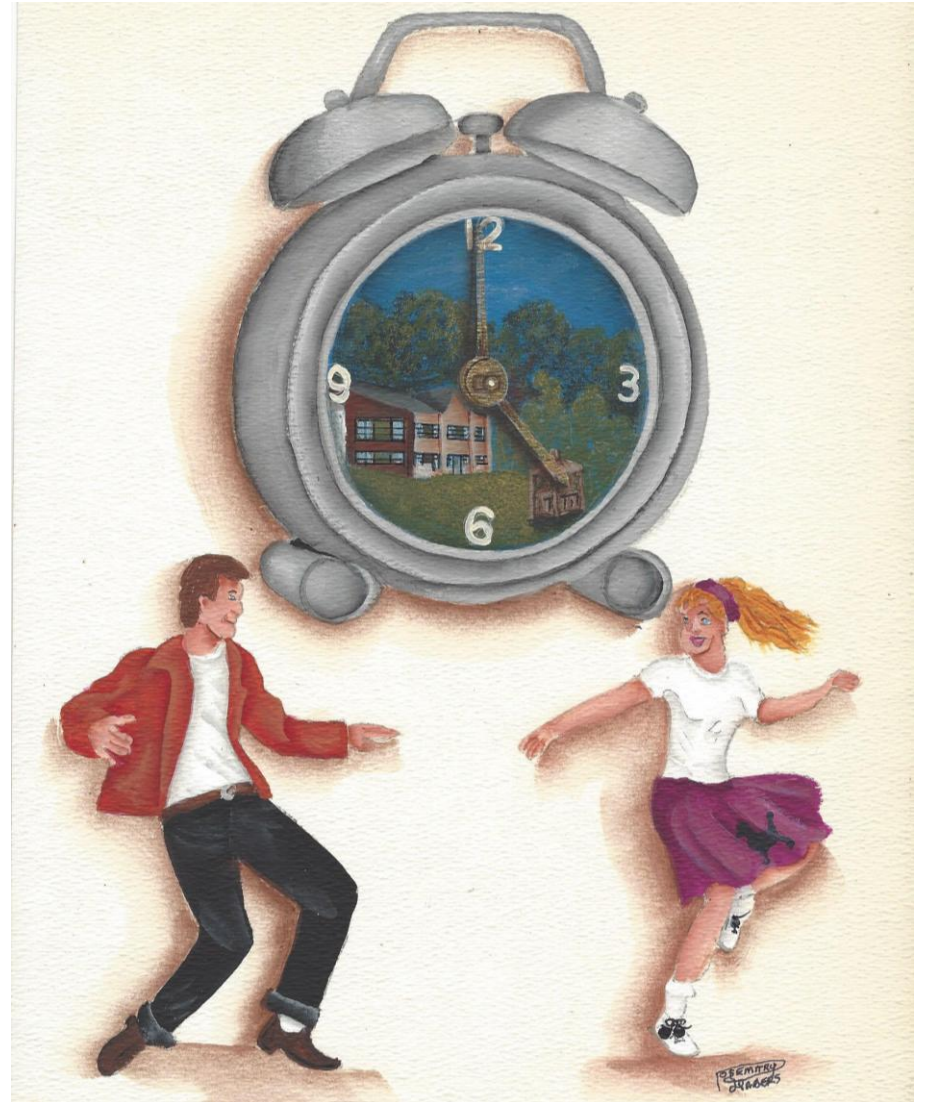


Golden Triangle Decorative Painters
29th Annual Retreat
50's Rock Around The Clock

FIRST CLASS MAIL

Rosemary Habers
Booklet Chair
539 Chadwick Street
Sewickley, PA 15143



Antiochian Village
October 12th – 15th, 2017

Retreat Information

RESERVATION: You must reserve your room **DIRECTLY** with Antiochian before August 1, 2017. You will be required to pay a deposit of at least half of your room rate at that time but the remainder must be paid prior to October 10, 2017. You can register on line through our website by going to GTDP.org, Click on the button marked “Retreat”, click on “Antiochian Registration” which will take you to Antiochian’s website. When registering if you know who your roommate will be, please plan to register your roommates under the same registration link. To do this, simply select the “Add another attendee” tab on the final details page, located under the Attendees box to the right of the screen. Should you need assistance with your registration, please call the Front Desk at Antiochian Village and they will be happy to assist you. 724-238-3677. **GTDP is not responsible for anything dealing with rooms.**

Room/Meals: 3 nights- \$431.42 - Private room \$316.97 – 2 people per room
 \$281.00 – 3 people per room \$261.38 - 4 people per room

REGISTRATION: Registration to attend the Retreat and to attend classes **MUST** be sent to Mandy Steele, Registration Chair, **NOT** Antiochian. If you send your registration to Antiochian you will not be registered for the Retreat or classes.

REGISTRATION: **Thursday, 2 pm** in the Hospitality Room Come and socialize with friends throughout the day, enjoy a coffee, tea, water or snack. A light meal will be served at **4 p.m.** in the auditorium.

MAKE-IT/TAKE-IT An assortment of projects geared for all levels will be
 Opens 2 pm for sale in the auditorium. If you are interested in teaching
 contact Rosemary Habers, 412-741-5158 or
 habersr1@aol.com

WAYS & MEANS If you wish to sell at Ways & Means the table fee is \$15 for
 Opens 2 pm the weekend. You will be entirely responsible for manning
 your table, set up, take down, collecting any taxes and money
 from sales. GTDP will have no responsibility for any table. If
 interested call Mary Ann Yurus.724-745-8337 or
 magyurus@comcast.net for details.

CLASS SALES Any classes available are listed in the Auditorium

MEAL TIMES Meal times are scheduled by Antiochian Village and
 they are all served in the Cafeteria. The schedule is as
 follows:

Breakfast	7:00 – 8:00 a.m.
Lunch	12:00 – 1:00 p.m.
Dinner	5:00 – 6:00 p.m.

SOCIAL Saturday 7:00 pm

BANQUET Sunday 1:00 pm

Ligonier, PA 15658
724-238-3677

Directions: *From Pittsburgh:*
 Travel East on the Pennsylvania Turnpike (I-76) to exit 9 at Donegal. Exit toll and turn left, follow signs for Ligonier/Rt. 711 North. Stay on 711 North for 13 miles. At the intersection of Route 30, cross Route 30 and proceed around the Town Square Gazebo. Stay on 711 North, traveling through the town of Ligonier. The Antiochian Village entrance is on the right approximately 7.5 miles from the Town Square Gazebo.

Telephone Calls: Telephones in the rooms require activation at the Receptionist for outgoing calls. For incoming calls, people can call the main number of **Antiochian (724) 238-3677**, and ask to be transferred to your room or leave a message.

Antiochian Village is a Smoke-Free Facility.

THURSDAY 6pm - 10pm	Janine Stiffler Birds Eye View (CP-4hr-B)	Rosann Wagner Dragonfly (A-4hr-B/I)	MaryAnn Yurus Waltz of the Flowers (W-4hr-I)	Elaine Walker Colorful Butterfly (W-4hr-B)	Lynne Banting Love in the Mist (WC-4hr-B)
7am - 8am					
FRIDAY 9am - 12pm	Rosemary Habers Gone Fishing (A-6hr-I)	Sandra Camarota Dahlias (WC-6hr-I/A)	MaryAnn Yurus Western Tanager (A-6hr-I)	Judy Leasure Gardenia (P-6hr-I)	Carol Hoffman Sea Sage Still Life (O-6hr-I)
12pm - 1pm					
1pm - 4pm	Gone Fishing Part 2	Dahlia Part 2	Western Tanager Part 2	Gardenia Part 2	Sea Sage Still Life Part 2
6pm - 10pm	Rosemary Habers Happy Halloween (A-4hr-B)	Old Rugged Cross Grace Fatchet (A-4hr-B/I/A)	Vicki Sherman Harvest Home Plate (W-4hr-I)	Laura Angelo God Bless America (A-4hr-I)	Marci Miller Tulip Scarf FP-4hr-B)
SATURDAY 9am - 12pm	Rosemary Habers Mr. & Mrs. Cardinal (A-6hr-B/I/A)	Judy Leasure Gourds & Pewter (P-6hr-I)	Elaine Walker White Flower (WC-6hr-I)	Janine Stiffler Happy Go Lucky (CP - 6hr-I)	Sandra Camarota Angel Trumpet Flower (WC-6hr-I/A)
5pm - 6pm					
1pm - 4 pm	Mr. & Mrs. Cardinal	Gourds & Pewter Part 2	White Flower Part 2	Happy Go Lucky Part 2	Angel Trumpet Flower Part 2
SUNDAY 8 am - 12pm	Vicki Sherman Santa's Boys (A-4hr-I)	Sandra Camarota Peacock Abstract (W-4hr-B/I)	Carol Hoffman Your Hometown Cup (A-4hr-I)	Janet Hylton Peace On Earth (A-4hr-B/I)	Lynne Banting Valentine Rose (O-4hr-B)
B=Beginner	I=Intermediate	A=Advanced	O=oil	W=Watercolor	CP=Color Pencil P=Pastels FP=Fabric Paint

General Information

- If your registration fee does **not** accompany your registration form, you will **not** be considered registered. You **must** be registered in order to take classes. The Sunday Banquet is included in the registration fee.
- The cost of each class consists of the following two (2) fees:**
 - Class Fee:**
 - 4-hour class: **\$13 members**
\$14 non members
 - 6-hour class: **\$19 members**
\$20 non members
 - Project Fee:** **Amount listed under class selected.**
This fee includes paint, surface picture, pattern and instructions. **This fee is paid directly to the teacher.**
Make checks payable to the teacher.
- In selecting classes, use the following guidelines:**
 - Beginner** Taught at a slow pace with teacher assistance.
 - Intermediate** Taught at a medium pace with moderate teacher assist.
 - Advanced** Taught at a brisk pace with minimal teacher assist.
- Bring your normal painting supplies to class.** This includes brushes, palette, paper towels, brush cleaner (odorless) two water containers, graphite paper (black& white), stylus, etc. If any special supplies are required, they will be listed in the class description.
- The art of decorative painting uses products that may cause adverse reactions in those with sensitivity. You are asked to use your judgment as to classes that you attend. GTDP assumes no liability for these products.**

Class Confirmations & Class Vouchers

Please include your email address for your confirmation, if available. They will only be mailed, if you included a self-addressed stamped envelope. Email is the preferred way as it is quicker. If you do not submit either you will receive your class vouchers at Retreat Registration.

Project Fees (payable to Teachers)

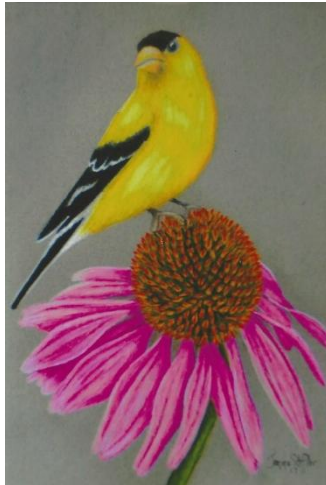
In each classroom, a monitor will take attendance and collect the envelopes containing the project fee to be paid directly to the teacher. Please prepare an envelope for each class. Enclosed in the envelope should be:

- Class Voucher**
- Project Fee** – either check made payable to the **Teacher** or exact cash.
The monitors do not have change.

You will not be able to take the class without a Class Voucher from either Registration or Class Sales.

Thursday, October 12, Evening Class
6:00 pm – 10:00 pm

NOTES



4 hours - Janine Stiffler

“Birds Eye View“

Level: Beginner

Medium: Colored Pencil

Size/Surface: 11” X 14” Suede Board

Supplies: Pencil Sharpener, White transfer paper, kneaded eraser,
#2 pencil

Cost **\$25.00**



4 hours – Rosann Wagner

“Dragonfly”

Level: Beginner/Intermediate

Medium: Acrylic

Size/Surface: 8” x 10” Clayboard

Supplies: good liner, sea sponge

Cost **\$15.00**

2017 Retreat Board

Chairman	Cindi Martincic Pat Jinkens / Susan Jaap
Art Show	MaryAnn Yurus
Banquet	Ellen Belisle
Hospitality	Laura Angelo
Make-it/Take-its	Rosemary Habers
Monitors	Rhonda Gillespie
Name Tags	Jeanne Delbusso
Raffle Ticket Sales	Debbie Carosone
Registration	Mandy Steele
Retreat Book	Rosemary Habers
Teacher Chair	Rosann Wagner
Treasurer	Rosemary Habers
Ways & Means	MaryAnn Yurus

2017 GTDP Board

President	Mandy Steele
1st VP/Programs	Laura Angelo
2nd VP Membership	Rhonda Gillespie
Corresponding Secretary	Danny Porterfield
Decorative Painting Month	Rhonda Gillespie
Historian	Delores Khalouf
Hospitality	Cindi Martincic
Newsletter Editor	Rosemary Habers
Nominating	
Parliamentarian	Rosann Wagner
Points System	Rosann Wagner
Publicity	MaryAnn Yurus
Recording Secretary	Debbie Carosone
Service	Pat Jenkins
Retreat Chairman	Cindi Martincic
Spring Basket Luncheon	Board
Treasurer	Rosemary Habers
Ways & Means	Jeanne Delbusso

Visit our Website at GTDP.org

Thursday October 12, Evening Classes Cont.

6:00pm –10:00pm.



4 hours - Lynne Banning

"Love in the Mist"

Level: Beginner

Medium: Watercolor

Size/Surface: 8" x 8" watercolor paper

Supplies: Standard supplies. Frames will be available for purchase.

Cost: \$15.00



4 hours - Elaine Walker

"Colorful Butterfly"

Level: Beginner

Medium: Watercolor

Size/Surface: "5" X 7" watercolor paper

Supplies: 1" wash, #4 or #6 round, fine liner

Cost: \$20.00

Thursday October 12 Evening Classes Cont.
6:00pm. –10:00pm.



4 hours – MaryAnn Yurus
"Waltz of the Flowers"

Level: Intermediate

Medium: Pen and Ink Watercolor

Size/Surface: 11" X 14" Watercolor paper. Includes pen and mat.

Supplies: Normal supplies.

Cost: \$25.00



Front desk (check in here)

2017 Retreat Teachers

Laura Angelo
Lynne Banting
Sandra Joy Camarota
Grace Fatchet
Rosemary Habers
Carol Hoffman CDA
Janet Hylton
Judy Leasure TDA
Marci Miller
Vicki Sherman
Janine Stiffler
Rosann Wagner
Elaine Walker
MaryAnn Yurus

Sunday, October 15 Cont.
8:00am. – 12:00pm.



4 hours - Viki Sherman
"Santa's Boys"
Level: Intermediate
Medium: Acrylic
Size/Surface: 21½" " X 6¾" wood trivet
Supplies: Painters tape
Cost: \$20.00

Art Show

The theme of this year's art show is "50's Rock around the clock". Paint a 78 record for the Art Show. Prizes awarded will be: first prize \$25, second \$20 and third \$15.

Friday October 13, Morning/Afternoon
9:00am. – 12:00pm. and 1:00pm – 4:00pm



6 hours - Rosemary Habers
"Gone Fishing"
Level: Intermediate
Medium: Acrylic
Size/Surface: 6" X 10" wood plaque
Supplies: Normal painting supplies
Cost: \$15.00



6 hours - Judy Leasure
"Gardenia"
Level: Beginner/Intermediate
Medium: Pastel
Size/Surface: 8" X 8" paper. Includes set of 64 pastels
Supplies: Stylus, transfer paper, hand wipes
Cost: \$25.00

Friday, October 13, Morning, cont.
9:00am – 12:00pm and 1:00pm – 4:00pm.



6 hours - MaryAnn Yurus
"Western Tanager"
Level: Intermediate
Medium: Acrylic
Size/Surface: 12" X 12" slate
Supplies: Normal painting supplies
Cost: \$25.00

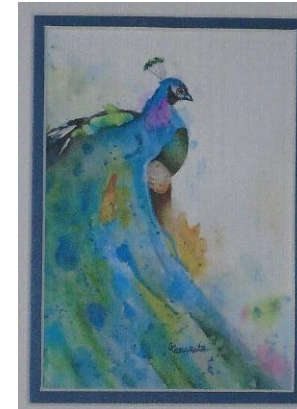


6 hours - Sandra Joy Camarota
"Dahlias"
Level: Intermediate/Advanced
Medium: Watercolor
Size/Surface: 12" X 16" Watercolor Paper. Includes single oval mat.
Supplies: Liner, #2, 4,6,8 set, 2 water containers, kleenex, paper towels, hair dryer, kneading eraser
Cost: \$28.00

Sunday October 15 Cont.
8:00am – 12:00pm



4 hours - Lynne Banting
"Valentine Rose"
Level: Beginner
Medium: Oil.
Size/Surface: 6" X 6" wood
Supplies: Standard oil supplies, #2 flat sable, liner.
Ribbon and mirror included.
Cost: \$14.00

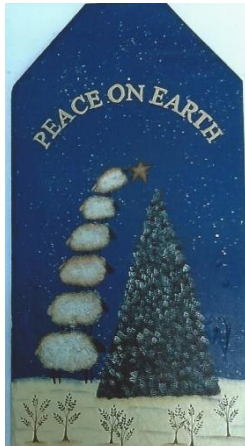


4 hours - Sandra Joy Camarota
"Peacock Abstract"
Level: Beginner/Intermediate
Medium: Watercolor
Size/Surface: 8" X 10" Watercolor paper. Includes double mat.
Supplies: Liner, #2, #4, #6 round, 2 water containers, Kleenex, paper towels, hair dryer, kneaded eraser
Cost: \$15.00

Sunday, October 15
8:00am. – 12:00pm.

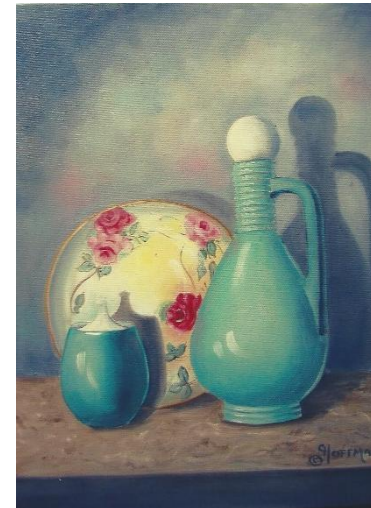


4 hours - Carol Hoffman
"Your Hometown Cup" (can put your hometown on cup)
Level: Intermediate
Medium: Acrylic
Size/Surface: 9" X 12" Canvas
Supplies: Good flats #6-#8, #10½, #3 round, liner
Cost: \$20.00



4 hours - Janet Hylton
"Peace on Earth"
Level: Beginner/Intermediate
Medium: Acrylic
Size/Surface: 22" x 11" slate
Supplies: #1 script liner, spatter tool, #10 & #12 flat, large berry maker, DM stippler, #8 round, scumbler, #3 round lazy susan to hold slate, acrylic supplies.
Cost: \$25.00

Friday October 13, Morning/Afternoon cont.
9:00am. – 12:00pm. and 1:00pm. – 4:00pm.



6 hours - Carol K. Hoffman
"Sea Sage Still Life"
Level: Intermediate/Advanced
Medium: Oil
Size/Surface: 11" X 14" Canvas
Supplies: Sharff brights #10, #8, #6, #4, #2 liner, #6 or #8 bristle brights, mop brush
Cost: \$25.00



Enjoy the scenery on your free time.

Friday, October 13, Evening
6:00pm. – 10:00pm.



4 hours - Marci Miller
"Tulip Scarf"

Level: Beginner
Medium: Silk dyes & fabric paint
Size/Surface: 15" X 60" silk scarf
Supplies: Fabric brush or stiff flat
Cost: \$15.00

Saturday, October 14
9:00am. – 12:00pm. and 1:00pm. – 4:00pm.



6 hours - Sandra Joy Camarota
"Angel Trumpet Flower"

Level: Intermediate/advanced
Medium: Watercolor
Size/Surface: Watercolor paper. Single mat included
Supplies: liner, #2, #4, #6, #8 rounds, 2 water containers, Kleenex, paper towels, hair dryer, kneaded eraser.
Cost: \$15.00



4 hours - Viki Sherman
"Harvest Home Plate"

Level: Intermediate
Medium: Acrylic
Size/Surface: 15" X 15 3/4" scalloped wood plate
Supplies: Normal painting supplies
Cost: \$17.00



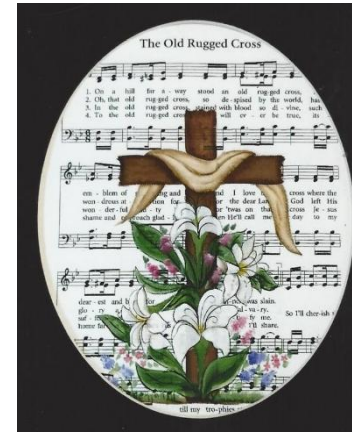
"Paint me....Paint me."

Saturday, October 14 Cont.
9:00am. – 12:00pm. and 1:00pm. – 4:00pm.



6 hours - Janine Stiffler
"Happy Go Lucky"
 Level: Intermediate
 Medium: Color Pencils using odorless mineral spirits
 Size/Surface: 11" X 14" Bristol paper
 Supplies: Pencil Sharpener, #2 round & #4 flat brushes, paper towels
Cost: \$25.00

Friday October 13, Evening Classes Cont.
6:00pm. – 10:00pm.



4 hours - Grace Fatchet
"Old Rugged Cross"
 Level: Beginner/Intermediate/Advanced
 Medium: Acrylic
 Size/Surface: Page of Sheet Music. Watercolor paper. Mat not included
 Supplies: Micron Pen
Cost: \$12.00



6 hours - Judy Leasure
"Gourds and Pewter"
 Level: Intermediate
 Medium: Pastel
 Size/Surface: 7" X10" paper. Set of 64 pastels included
 Supplies: Stylus, transfer paper, hand wipes
Cost: \$25.00



4 hours - Laura Angelo
"God Bless America"
 Level: Intermediate
 Medium: Acrylic
 Size/Surface: Slate
 Supplies: Regular painting supplies, hair dryer
Cost: \$10.00

Friday October 14, Evening Classes Cont.
6:00pm. – 10:00pm.



4 hours - Rosemary Habers
"Happy Halloween"
Level: Beginner/Intermediate/Advanced
Medium: Acrylic
Size/Surface: 14 " X 16" rocklon banner
Supplies: Normal painting supplies
Cost: \$18.00



Fountain at Antiochian Museum

Saturday, October 15
9:00am. – 12:00pm. and 1:00pm. – 4:00pm.



6 hours - Rosemary Habers
"Mr. & Mrs. Cardinal"
Level: Beginner/Intermediate/Advanced
Medium: Acrylic
Size/Surface: 18 " X 46" burlap table runner
Supplies: Normal painting supplies
Cost: \$18.00



6 hours - Elaine Walker
"White Flowers"
Level: Intermediate
Medium: Watercolor
Size/Surface: 8" X 10" watercolor paper
Supplies: #1 wash, #4 or #6 round, liner, old brush for applying mistet
Cost: \$22.50