









| | | |
|---|---------------------------|----|
|  | EZ Extend Displays | 02 |
|  | EZ Tube Displays | 04 |
|  | Fabric Pop Up Displays | 08 |
|  | Tahoe Modular Displays | 14 |
|  | Resort Extrusions | 16 |
|  | Wallbox Displays | 22 |
|  | Pop Up Displays | 24 |
|  | Retractable Banner Stands | 28 |
|  | Indoor Banner Stands | 34 |
|  | Outdoor Banner Stands | 38 |
|  | Display Stands | 44 |
|  | Hanging Banners | 46 |
|  | Table Throws | 48 |
|  | Literature Stands | 50 |
|  | Accessories | 51 |



EZ EXTEND DISPLAYS

Set up the EZ Extend in no-time—less than five minutes! This sturdy and balanced display includes a steel base, available in widths of 2ft. to 5ft., allowing you to display merchandise over your fabric graphic using slatwall accessories like hooks, hangers, shelves and baskets. Add 1ft. or 2ft. extender tubes to increase height from the standard 7.5ft. to 8.5ft., 9.5ft., 10.5ft. or 11.5ft. Want it shorter? Just take away tubes for a 5.5ft. or 6.5ft. height.

To assemble, secure the longest vertical tubes onto the base using the included allen wrench. Add the bottom horizontal support tube and secure. Snap on the remaining vertical tubes, then top frame with the curved bar to complete. Tilt or lay down EZ Extend to swiftly cover with the pillowcase graphic. Using the industrial-size zipper, zip underneath the bottom support pole, maximizing fabric tension. Choose a single-sided (pick white or black back fabric) or double-sided dye-sublimated stretch fabric print.



Fabric

NEW EZ EXTEND DISPLAYS



EZ EXTEND 24"

Product Code: EZ-ETE24

Display Size: 25.5"W x 66" to 138"H x 9.75"D

Template Size: 24"W x 66" or 138"H

Weight: 13 lbs (Stand Only)



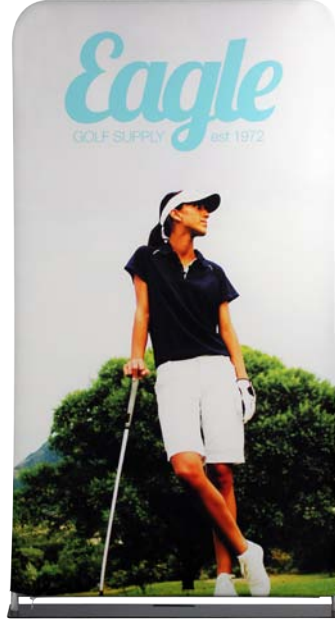
EZ EXTEND 36"

Product Code: EZ-ETE36

Display Size: 37.5"W x 66" to 138"H x 9.75"D

Template Size: 36"W x 66" or 138"H

Weight: 16 lbs (Stand Only)



EZ EXTEND 48"

Product Code: EZ-ETE48

Display Size: 50"W x 66" to 138"H x 9.75"D

Template Size: 48"W x 66" or 138"H

Weight: 21 lbs (Stand Only)



EZ EXTEND 60"

Product Code: EZ-ETE60

Display Size: 61"W x 66" to 138"H x 9.75"D

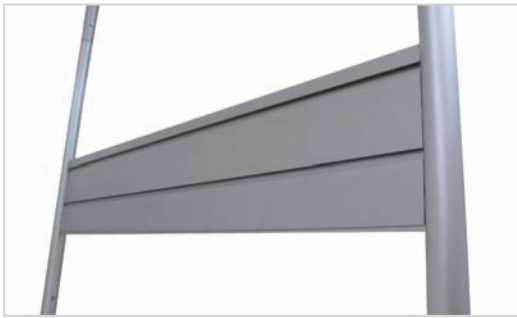
Template Size: 60"W x 66" or 138"H

Weight: 25 lbs (Stand Only)

NEW EZ EXTEND SLATWALL

COMING IN FEBRUARY 2015

Display products! Upgrade your EZ Extend with an aluminum slatwall. Full selection of slatwall accessories: Waterfall hooks, merchandise hangers, baskets and shelf with brackets.



Catalog Holder



Hook



Waterfall

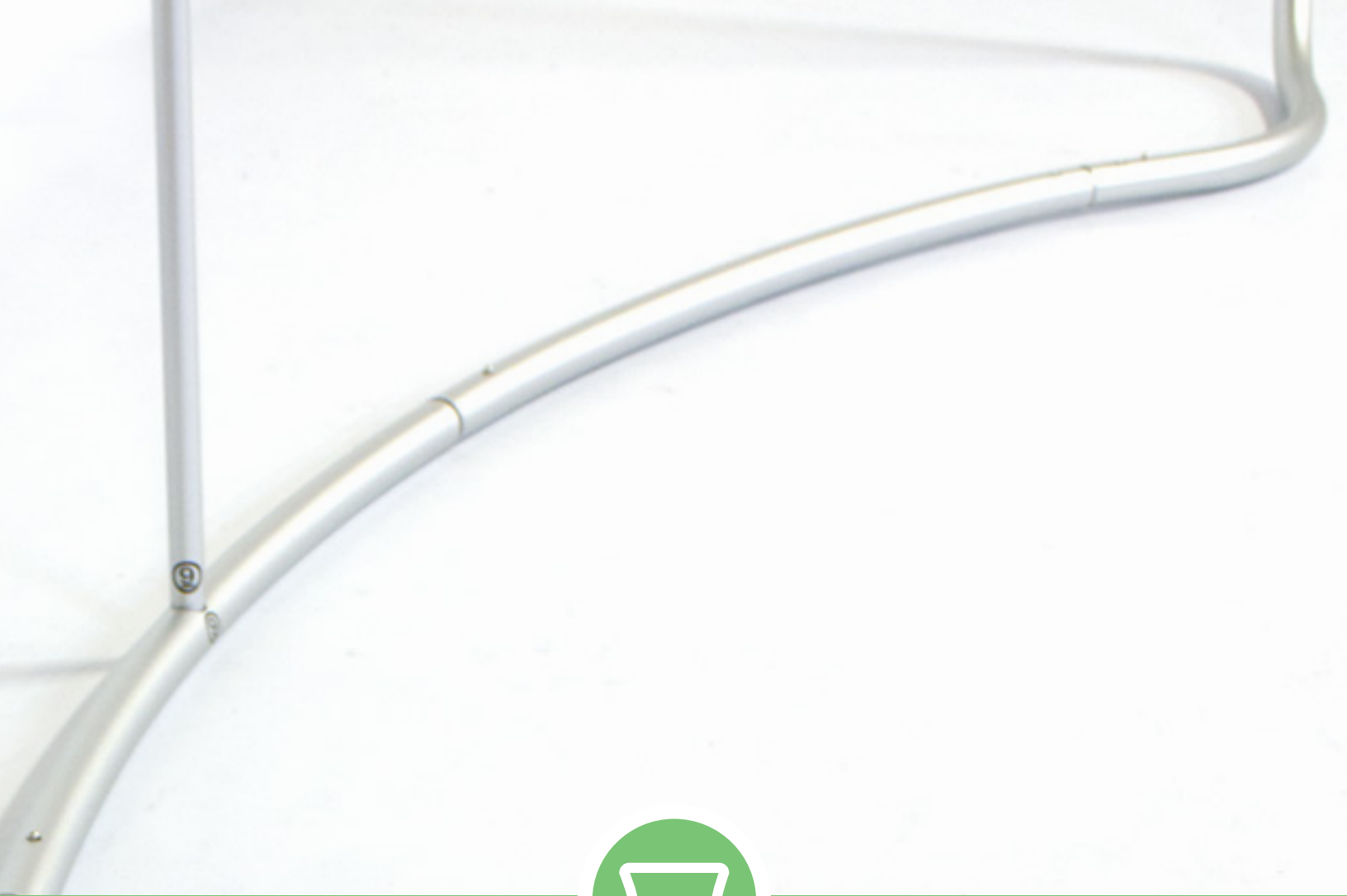
Upgradable Options

Silverbag



EZ Tube LED Light
(Black or Silver)





EZ TUBE DISPLAYS

Sleek and "EZ", our tension fabric systems are a great alternative to standard backwall displays. Quickly assembled in just 5 minutes, slide the tubes together to make the frame and lock in place with a push button snap. Then, simply pull the pillowcase-like graphic over the frame and zip it shut. The zipper, hidden from view, tightens the stretch fabric, beautifully displaying your images. Disassembled, the lightweight frame and graphic fits inside a compact silver bag. The EZ Tube is available in 5 sizes and different styles. Quantity Prices are also available.



EZ TUBE DISPLAY CURVE



EZ TUBE 20ft. CURVE

Product Code: EZT20CRV

Display Size: 240"W x 89"H

Template Size: 241"W x 90.25"H (Front), 243"W x 90.25"H (Back)

Weight: 70 lbs

**Medium Hard Case is included.*



EZ TUBE 6ft. CURVE TABLETOP

Product Code: EZT6CRVTT

Display Size: 72"W x 60"H

Template Size: 74"W x 59.5"H

Weight: 15 lbs



EZ TUBE 8ft. CURVE TABLETOP

Product Code: EZT8CRVTT

Display Size: 96"W x 60"H

Template Size: 98"W x 59.25"H

Weight: 16 lbs



EZ TUBE 8ft. CURVE

Product Code: EZT8CRV

Display Size: 96"W x 89"H

Template Size: 98"W x 88.25"H

Weight: 20 lbs

EZ TUBE ARCH



EZ TUBE 10ft. CURVE **BEST SELLER**

Product Code: EZT10CRV

Display Size: 120"W x 89"H

Template Size: 122"W x 88.25"H

Weight: 22 lbs



EZ TUBE 8ft. ARCH

Product Code: EZT8ARC

Display Size: 87"W x 90"H

Template Size: 89"W x 91"H

Weight: 35 lbs

**includes 2 feet*



EZ TUBE 10ft. ARCH

Product Code: EZT10ARC

Display Size: 111"W x 90"H

Template Size: 111.5"W x 91"H

Weight: 37 lbs

**includes 2 feet*

EZ TUBE STRAIGHT



NEW

COMING IN FEBRUARY 2015

EZ TUBE 20ft. STRAIGHT

Product Code: EZT20STR

Display Size: 240"W x 89"H

Template Size: 241"W x 90"H

Weight: 70 lbs

**includes 3 feet & case*



EZ TUBE 8ft. STRAIGHT

Product Code: EZT8STR

Display Size: 96"W x 89"H

Template Size: 89.50"W x 86.50"H

Weight: 30 lbs

**includes 2 feet*



EZ TUBE 10ft. STRAIGHT

Product Code: EZT10STR

Display Size: 112"W x 89"H

Template Size: 111.75"W x 87.25"H

Weight: 34 lbs

**includes 2 feet*



EZ SURF

EZ SURF DISPLAY

Product Code: EZSURF

Display Size:

56.5"W x 96"H

Template Size:

60"W x 96"H

Weight: 25 lbs



Front View

Side View



Cases



Case for EZ Tube Tabletop

- 6ft. Tabletop:
31.5"W x 11.5"H x 5.5"D
- 8ft. Tabletop:
36.5"W x 11.5"H x 5.5"D



Case for EZ Tube 8ft. & 10ft.

- Size: 48"W x 12"H x 6"D

Options



EZ Tube
LED Light
(Black or Silver)

EZ FABRIC COUNTER

Garner more attention with the EZ Fabric Curved Counter—a curved, versatile version of the EZ Fabric Counter. What makes it versatile? This new counter is capable of expanding and morphing; get up to five times more counter and graphic space by connecting extra curved or straight units. What's more, curved units come with wooden shelf inserts. Graphics available on front, back, sides and top. See your printed graphic through the frosted acrylic countertop piece! Push button snaps connect the lightweight aluminum framework together. Position the frame inside the fabric graphic, pull over to fully cover frame, then zip shut the backside. Attach countertop. This fully enclosed unit unzips horizontally at the back to easily access shelves, making it convenient to store or hide stuff. Carry bag included.

NEW

COMING IN FEBRUARY 2015

EZ CURVED COUNTER SINGLE

Product Code: EZ-CRVFABCTR

Display Size: 52"W x 40"H

Template Size: 82"W x 40"H (front)

Weight: 31 lbs

**MORE SHAPES
AVAILABLE**

Single



Double



Top View



Top View



Connection

EZ FABRIC COUNTER

Product Code: EZ-FABCTR

Display Size: 38.5"W x 38.06"H x 14.57"D

Template Size: 63"W x 39.25"H (front)

Weight: 22 lbs





FABRIC POP UP DISPLAYS

The RPL Fabric Pop Up is the perfect display on the go. It's ready in minutes. The lightweight aluminum alloy frame locks in place using plastic hooks. Fasten the graphic to the frame with hook & loop. Interchangeable graphics make it a versatile choice. Easily collapse the frame with front graphic attached and stow in your carry bag.



RPL STRAIGHT



RPL 20ft. STRAIGHT

Product Code: RPL8X3
 Display Size: 240"W x 89"H x 12"D
 Template Size: 265"W x 90"H
 Dimensions: 25" x 11" x 33"
 Weight: 41lbs. (Frame Only)



RPL 5ft. STRAIGHT

Product Code: RPL2X2
 Display Size: 60"W x 60"H x 12"D
 Template Size: 85"W x 60.5"H
 Dimensions: 15" x 16" x 36"
 Weight: 21lbs. (Frame Only)



RPL 8ft. STRAIGHT

Product Code: RPL3X3
 Display Size: 89"W x 89"H x 12"D
 Template Size : 114"W x 89.5"H
 Dimensions: 12" x 14" x 35"
 Weight: 27lbs. (Frame Only)



RPL 10ft. STRAIGHT

Product Code: RPL4X3
 Display Size: 118"W x 89"H x 12"D
 Template Size: 144"W x 89.5"H
 Dimensions: 15" x 15" x 35"
 Weight: 31lbs. (Frame Only)



RPL 15ft. STRAIGHT

Product Code: RPL6X3
 Display Size: 180"W x 89"H x 12"D
 Template Size: 205"W x 89.5"H
 Dimensions: 20" x 12" x 35"
 Weight: 31lbs. (Frame Only)

RPL CURVE



RPL 10ft. CURVE

Product Code: RPL4X3CRV
 Display Size: 112"W x 89"H x 24"D
 Template Size: 133.75"W x 89.5"H
 Dimensions: 15" x 15" x 35"
 Weight: 31lbs. (Frame Only)



RPL 8ft. CURVE

Product Code: RPL3X3CRV
 Display Size: 90"W x 89"H x 24"D
 Template Size: 106.75"W x 89.5"H
 Dimensions: 12" x 14" x 35"
 Weight: 27lbs. (Frame Only)



Options

Ready Pop Light



150 Watt
 Halogen Light
 11ft cord
 Black or Silver

Ready Pop LED Light



LED Light
 9.5' cord
 Black or Silver

Back of Frame
 Easy to Set Up



READY POP STRAIGHT



READY POP 10ft. STRAIGHT

Product Code: RP4X3STR
Display Size: 118"W x 89"H x 12"D
Template Size / Material: 141.5"W x 88.98"H / Stretch Fabric
Case: 11"W x 32"H x 13"D
Dimensions / Weight: 18" x 16" x 37" / 42lbs. (Frame Only)



READY POP 5ft. STRAIGHT

Product Code: RP2X2
Display Size: 60"W x 60"H x 12"D
Template Size: 83.54"W x 59.92"H
Dimensions / Weight: 15" x 16" x 36" / 21lbs. (Frame Only)



READY POP 5ft. x 7.5ft.

Product Code: RP2X3STR
Display Size: 5'W x 7.5'H
Template Size: 83.62"W x 88.25"H
Dimensions: 17" x 17" x 41"
Weight: 34lbs. (Frame Only)



READY POP 7.5ft. x 5ft.

Product Code: RP3X2STR
Display Size: 7.5'W x 5'H
Template Size: 111.752"W x 60"H
Dimensions / Weight: 17" x 17" x 41" / 34lbs. (Frame Only)



READY POP 8ft. STRAIGHT

Product Code: RPL3X3STR
Display Size: 89"W x 89"H x 12"D
Template Size : 112.6"W x 88.98"H
Case: 11"W x 32"H x 13"D
Dimensions / Weight: 15" x 16" x 36" / 38lbs. (Frame Only)

READY POP CURVE



READY POP 10ft. CURVE

Product Code: RP4X3CRV
 Display Size: 112"W x 89"H x 24"D
 Template Size: 133.75"W x 88.75"H
 Case: 11"W x 32"H x 13"D
 Dimensions: 20" x 17" x 37"
 Weight: 35lbs. (Frame Only)



READY POP 8ft. CURVE

Product Code: RP3X3CRV
 Display Size: 90"W x 89"H x 24"D
 Template Size: 106.75"W x 88.75"H
 Case: 11"W x 32"H x 13"D
 Dimensions: 17" x 18" x 41"
 Weight: 24lbs. (Frame Only)



Steel Hook

Options

Half Hard Case



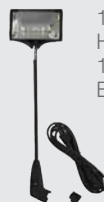
Molded plastic hard carry case with inset wheels for easy mobility. Case also has a center grip.
 16.5"W x 38.5"H x 15.75"D
 24 lbs.
 For Small size

Medium Hard Case



Molded plastic case including wheels and a handle for easy transport.
 22"W x 39"H x 17"D
 31 lbs.
 For Medium & Large size
 Optional graphic wrap (PVC or Laminated)

Ready Pop Light



150 Watt
 Halogen Light
 11ft cord
 Black or Silver

Ready Pop LED Light



LED Light
 9.5' cord
 Black or Silver

READY POP STRAIGHT DOUBLE-SIDED

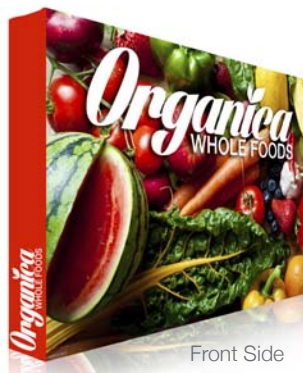
Our fabric pop up display is an ideal eye-catcher for your trade show, conference, special event, or use it again in your office as a promotional tool for walk-in customers. Just 10 minutes to set up, the graphics fasten to the lightweight aluminum alloy frame with hook & loop. Interchangeable graphics make it a versatile choice. Easily collapse the frame with front graphic attached and stow in your included carry case.



Front Side



Back Side



Front Side



Back Side

READY POP 8ft. STRAIGHT DOUBLE-SIDED

Product Code: RP3X3STR2

Display Size: 88.98"W x 88.98"H x 11.81"D

Template Size: Front: 112.6" x 88.98" / Back: 88.98" x 88.98"

Dimensions / Weight: 16" x 15" x 36" / 38lbs. (Frame Only)

READY POP 10ft. STRAIGHT DOUBLE-SIDED

Product Code: RP4X3STR2

Display Size: 117.85"W x 88.98"H x 11.81"D

Template Size : Front: 141.5" x 88.98" / Back: 117.85" x 88.98"

Dimensions / Weight: 18" x 16" x 37" / 42lbs. (Frame Only)

READY POP COUNTER DISPLAY

This fabric counter is an ideal complement to your Ready Pop Fabric Display. The countertop is available in black and features an internal shelf that is perfect for brochures, paperwork or exhibition samples.

Product Code: RPCNTR

Display Size: 40"W x 40"H x 12.5"D

Template Size: 60.5"W x 33.5"H

Counter Size: 35"W x 15.5"D

Dimensions / Weight: 9" x 18" x 37" / 29lbs. (Frame Only)



Options



Ready Pop LED Light

9.5' cord
Black



Ready Pop LED Light

9.5' cord
Silver



Ready Pop Light

150 Watt
Halogen Light
11ft cord
Silver or Black



T135 LED LIGHT

Weight: 2 lbs



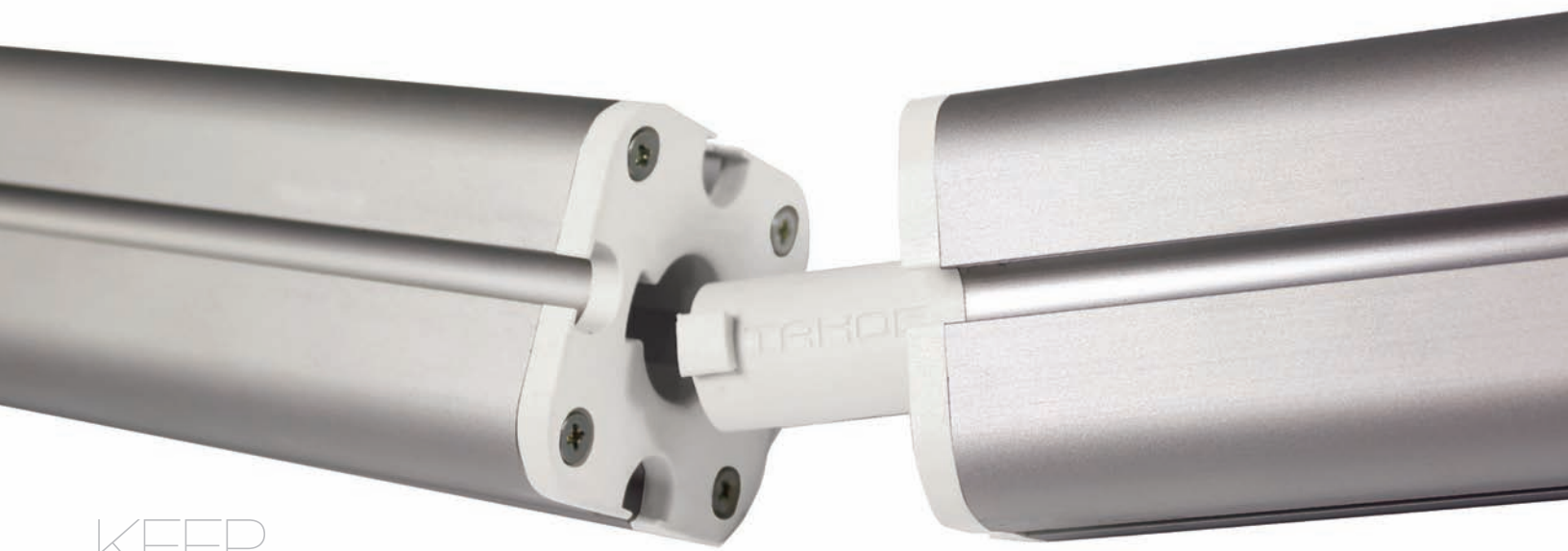
Medium Hard Case

The Medium Hard Carry Case is constructed out of molded plastic and includes wheels and a handle for easy transport.

22"W x 39"H x 17"D

31 lbs.

Optional graphic (PVC or Laminated)



KEEP
TAHOE
TOOLLESS



TAHOE MODULAR DISPLAYS

A modular display with a twist, the Tahoe Twistlock has been redesigned to be completely toolless. Replicated to keep the striking look of the Classic Tahoe, the Tahoe Twistlock is much easier to set up and 50% faster. Simply twist the pieces together to lock into place and untwist to disassemble. The Tahoe Twistlock is available in 10ft., 13ft., and 20ft. sizes and is fully customizable, making it the perfect modular back wall display. Did we mention it's toolless?



TAHOE TWISTLOCK



Twistlock X Graphic Package

Product Code: TTLXGP Template Size: 84.5"W x 84.5"H
 Display Size: 117.3"W x 96"H Dimensions: 21" x 17" x 53"
 Weight: 130 lbs.



Twistlock Y Graphic Package

Product Code: TTLYGP Dimensions:
 Display Size: 158"W x 96"H Box1: 21" x 17" x 53"
 Template Size: 84.5"W x 84.5"H (left) Box2: 12" x 12" x 44"
 40.75"W x 84.5"H (right) Weight: 180 lbs.



Twistlock Z Graphic Package

Product Code: TTLZGP Dimensions:
 Display Size: 243"W x 96"H Box1: 21" x 17" x 53"
 Template Size: 84.5"W x 84.5"H (2 large areas) Box2: 28" x 17" x 53"
 40.75"W x 84.5"H (center area) Weight: 255 lbs.



Twistlock Rack Package

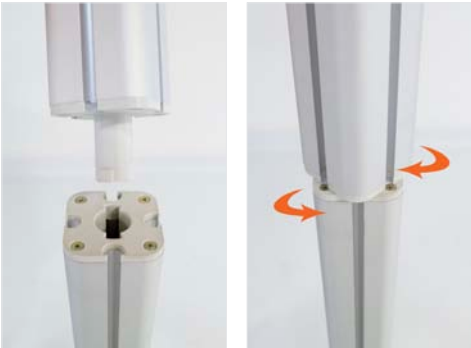
Product Code: TTLRACKGP
 Display Size: 75"W x 96"H
 Template Size: 40.75"W x 84.5"H
 Dimensions / Weight: 12" x 12" x 44" / 65 lbs.

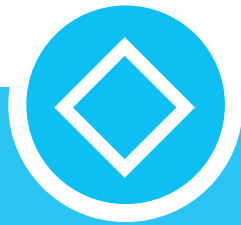
Customization

Have a vision? Make your conceptual ideas become a reality! Use the twistlock poles to construct your own original version of the Tahoe Twistlock display. For added style, choose from a variety of Tahoe accessories to adorn your display. Call for further details.

CLASSIC TAHOE DISPLAYS
 ALSO AVAILABLE

Feature





RESORT EXTRUSIONS

Introducing new product lines for the Resort Extrusions—an expanding family of standard- and custom-size extrusions of varied widths and compositions. Vail and Big Sky join already-existing Resorts Extrusions: Aspen, Mammoth and Whistler. All five Resort Extrusions are aluminum and equipped for Silicone Edge Graphics (SEG), yet each hold true to their individual style. What makes them different? Vail comes in profile widths of 40mm, 60mm and 100mm with a smooth outside finish. Aspen's finish has a line groove, like an indented stripe, for added style. Big Sky is a corner extrusion to create a 3-D display, like the Big Sky Tower or Counter. Furthermore, you can upgrade to toolless connectors for the Vail and Whistler; add lights (ladder or edge-lit) for the Mammoth, Whistler, or Vail*; add eye hooks for hanging overhead, feet for free-standing, or wall mounts for wall attachment.

**Only available for the Vail-100D (s-s/d-s), Vail-120D (s-s/d-s), or Vail-60S (s-s).*

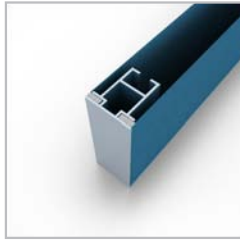


FRAME TYPE



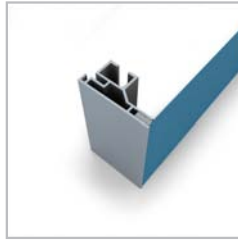
VAIL-40S

- 40mm wide profile
- Single-sided



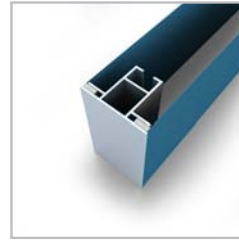
VAIL-40D

- 40mm wide profile
- Double-sided



VAIL-60S

- 60mm wide profile
- Single-sided



VAIL-60D

- 60mm wide profile
- Double-sided



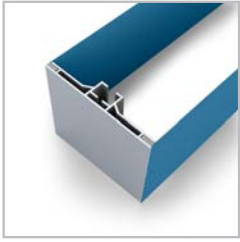
VAIL-100D

- 100mm wide profile
- Double-sided



VAIL-120D

- 120mm wide profile
- Double-sided



VAIL-120DB

- 120mm wide profile
- Double-sided



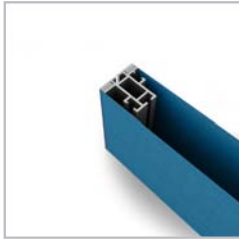
BIG SKY-32D

- 32mm wide profile
- Corner extrusion



BIG SKY-40CG

- 40mm wide profile
- Support extrusion



ASPEN-40D

- 40mm wide profile
- Double-sided



ASPEN-40C

- 40mm wide profile
- Support extrusion

FOR CUSTOM SIZE:

STEP 1. Choose frame type & size (width & height)

STEP 2. Choose package deal (frame only, graphic only* or graphic package*) *single-sided and double-sided are available.

STEP 3. Choose display options (standing, ceiling or wall mount) (p.19)

NEW BIG SKY COUNTER

BIG SKY 2ft. x 2ft. COUNTER GRAPHIC PACKAGE

Product Code: BIG_SKY

Display Size: 24"W x 40"H x 24"D

Template Size: Front: 26" x 42" (1 side)

MORE SIZES AVAILABLE



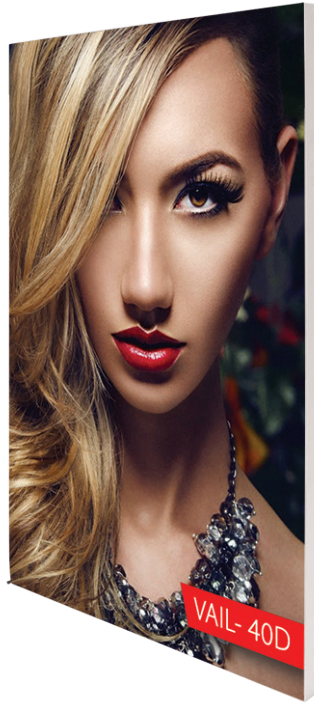
RESORT EXTRUSIONS



**Optional upgrade, TOOLLESS CONNECTORS, are available.*

FOR CUSTOM SIZE:

- STEP 1.** Choose frame type & size (width & height)
- STEP 2.** Choose package deal (frame only, graphic only* or graphic package*) *single-sided and double-sided are available.
- STEP 3.** Choose display options (standing, ceiling or wall mount)



VAIL40S 3ft.x5ft. SINGLE-SIDED GRAPHIC PACKAGE

Product Code: VAIL40S3X5G1
Display Size: 36"W x 60"H
Template Size: 3' x 5'

VAIL40D 6ft.x 3ft. DOUBLE-SIDED GRAPHIC PACKAGE

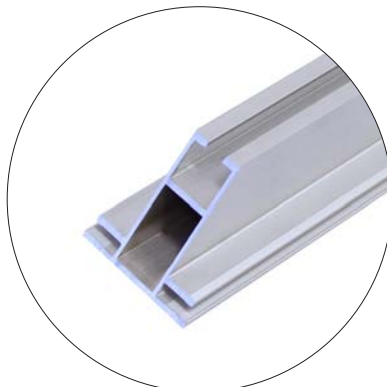
Product Code: VAIL40D6X3G2
Display Size: 72"W x 36"H
Template Size: 6' x 3'

VAIL60D 7ft.x5ft. DOUBLE-SIDED GRAPHIC PACKAGE

Product Code: VAIL60D7X5G2
Display Size: 84"W x 60"H
Template Size: 7' x 5'



VAIL 40 Connector



VAIL 60S Frame



VAIL100D Corner

MORE SIZES AVAILABLE



VAIL100D 6ft.x8ft. DOUBLE-SIDED GRAPHIC PACKAGE

Product Code: VAIL100D6X8G2
Display Size: 72"W x 96"H
Template Size: 6' x 8'

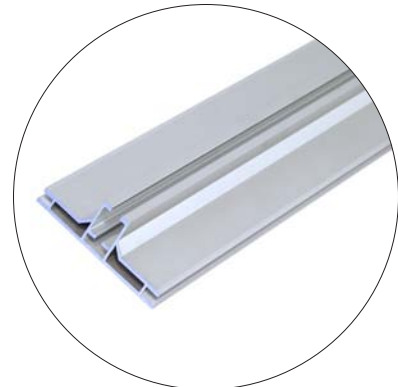


VAIL120D 4ft.x10ft. DOUBLE-SIDED GRAPHIC PACKAGE

Product Code: VAIL120D4X10G2
Display Size: 52"W x 120"H
Template Size: 4' x 10'



VAIL100D Frame



VAIL120 Frame

Resort Extrusions Options



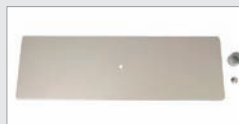
Steel Base



Yeti Foot



Side Foot



Flat Foot
(for under 4' frame)



Wall Hook



Ceiling Hook



Small Light



Large Light

RESORT EXTRUSIONS

ASPEN FABRIC FRAME

The ASPEN extrusion is similar to the VAIL-40D, except that the outside finish has a line groove, like an indented stripe, that is purposeful for easily installing accessories. Plus, it contributes a difference in style.

- Customize using ranging widths and heights of 2' to 10'.
- Single-sided or double-sided graphic options available.
- Floor, ceiling and wall mount display accessories (see options below)

MORE SIZES AVAILABLE

Single-Sided Graphic



Front



Back



Double-Sided Graphic



Front



Back

Frame



Corner Bracket



Frame Thickness: 1.57"

ASPEN 20FT .BACKWALL



Single-Sided

Product Code: AFBW20x7.5S

Double-Sided

Product Code: AFBW20x7.5D

*Includes 2 cases



Resort Extrusions Options



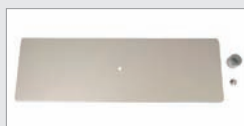
Steel Base



Yeti Foot



Side Foot



Flat Foot
(for under 4' frame)



Wall Hook



Ceiling Hook



Small Light



Large Light

MAMMOTH DISPLAY



Frame without Light

MAMMOTH 16ft. x 8ft. NON-BACKLIT

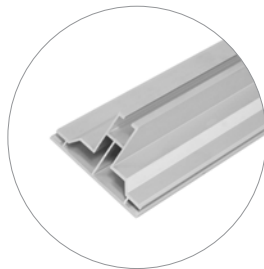
Product Code: MAM16X8FG
 Display Size: 16"W x 7.8"H
 Template Size: 189.75"W x 94.5"H
**includes hard case*



Frame with Light

MAMMOTH 16ft. x 8ft. BACKLIT

Product Code: MAM16X8LBFG
 Display Size: 16"W x 7.8"H
 Template Size: 189.75"W x 94.5"H
**includes hard case*



Frame Thickness: 4.75"

MORE SIZES AVAILABLE

LIGHTBOX

WHISTLER FABRIC LIGHT BOX



Product Code: WHISTLER
 Display Size: 31.5"W x 79"H
 Frame Depth: 4"
 Construction:
 • Aluminum Light Box
 • 2 Flat Feet (Length: 11")



Light strip



Corner

FABRIC LIGHT BOX



Frame without Light



Frame with Light



Outlet Plug (Included)



Frame Thickness: 1.25"



WALLBOX DISPLAYS

Advertise gallantly with the Wallbox fabric display, a 3-D portable unlike anything you've ever seen. Use it vertically, stretching tall like a tower, or horizontally as a barrier wall. Constructed with the same aluminum tubing as the Skybox hanging banners, set up is a snap and completely toolless! With push button snap locks, the tubes connect together. Inside the tubes are equipped with internal bungee cords to help guide the proper connections. Fabric envelops the whole frame, and zips shut at the top, creating a soft, seamless look. Printed graphics available on front, back, and endcaps. Carry bag included.



on Frame & graphic



Fabric

WALLBOX 20ft. x 8ft. PACKAGE

Product Code: WB20X8



WALLBOX 10ft. x 8ft. PACKAGE

Product Code: WB10X8



WALLBOX 8ft. x 15ft. PACKAGE

Product Code: WB8X15



WALLBOX 10ft. x 10ft. PACKAGE

Product Code: WB10X10



Package includes

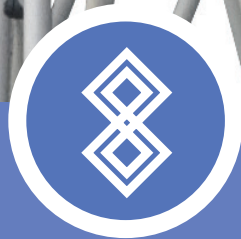
- (1) Collapsible extruded aluminum hanging sign frame
- (1) Full color zippered tension fabric graphic print
- Carry case



Options

Hanging Hardware for 15ft. or higher displays

For any Wallbox 15 ft. or higher, it is recommended to secure the Wallbox to the ceiling using the same hanging hardware as used for our line of Skybox hanging banners. Accessories sold separately.



POP UP DISPLAYS

The Big Wave Pop Up Display, a trade show classic, comes with everything you need to effectively promote your product. Designed specifically to fit 10ft. trade show booths, the straightforward look of the Big Wave gives a professional presentation. Expand the geometric aluminum frame, click locking mechanisms into place, and hang the graphic panels to complete set up. Various styles and sizes available up to 20ft wide. Choose PVC or laminate material.



GRAPHIC PACKAGE



10ft. Graphic Package
Product Code: PU10G
(PVC or Laminated Display Film)

**Price does not include graphic podium wrap*

TABLETOP



**Table & Table Throw are not included in the package.*

6ft. Tabletop Graphic Package
Product Code: PUTT6G
(Laminated Display Film)



**Table & Table Throw are not included in the package.*

8ft. Tabletop Graphic Package
Product Code: PUTT8G
(Laminated Display Film)

WAVE



8ft. Graphic Package
Product Code: PU8G
(PVC or Laminated Display Film)

STRAIGHT



9ft. Graphic Package
Product Code: PU9G
(Laminated Display Film)

20ft. BIG WAVE



**Price does not include graphic podium wrap*

20ft. Gullwing Graphic Package
Product Code: PUGW20G
(PVC or Laminated Display Film)



**Price does not include graphic podium wrap*

20ft. Serpentine Graphic Package
Product Code: PUSP20G
(Laminated Display Film)

CENTER GRAPHIC PACKAGE



20ft. Gullwing Center Package

Product Code: PUGW20CG
(PVC or Laminated Display Film)

**Price does not include graphic podium wrap*



6ft. Tabletop Center Package

Product Code: PUTT6CG
(Laminated Display Film)



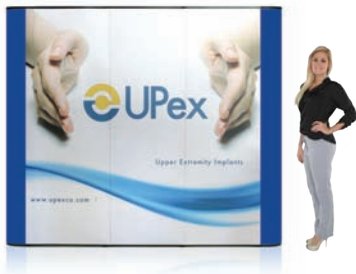
8ft. Tabletop Center Package

Product Code: PUTT8CG
(Laminated Display Film)



8ft. Center Package

Product Code: PU8CG
(PVC or Laminated Display Film)



9ft. Center Package

Product Code: PU9CG
(Laminated Display Film)



**Price does not include graphic podium wrap*

10ft. Center Package

Product Code: PU10CG
(PVC or Laminated Display Film)

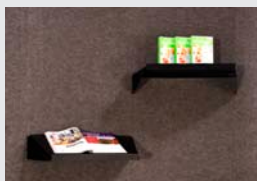


**Price does not include graphic podium wrap*

20ft. Serpentine Center Package

Product Code: PUSP20CG
(Laminated Display Film)

Options



Pop Up Shelf
27.165" width / 11.5" depth



Podium Graphic
(PVC or LAMINATED DISPLAY FILM)



Vegas Light Black
50W / 6.2' cord

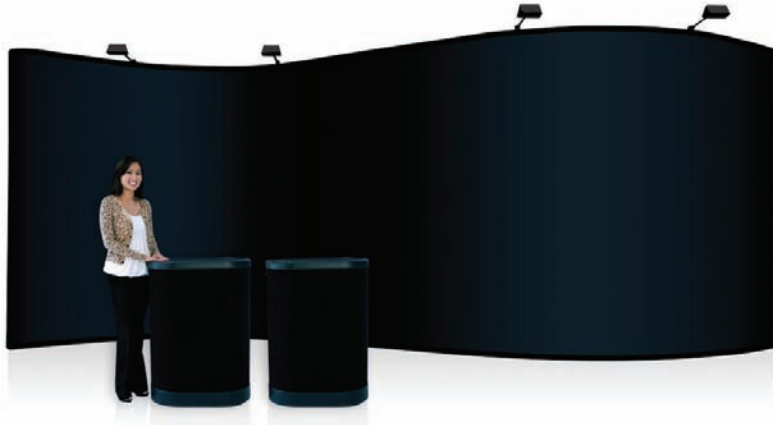


Pop Up Light Black
150W / 6.3' cord



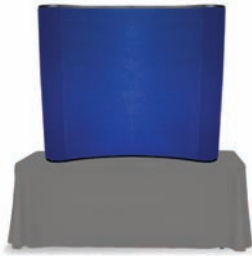
Pop Up LED Light Black or Silver
9.5' cord

FABRIC PACKAGE



20ft. Serpentine Fabric Package

Product Code: PUSP20F



**Table & Table Throw are not included in the package.*

6ft. Tabletop Fabric Package

Product Code: PUTT6F



**Table & Table Throw are not included in the package.*

8ft. Tabletop Fabric Package

Product Code: PUTT8F



8ft. Fabric Package

Product Code: PU8F



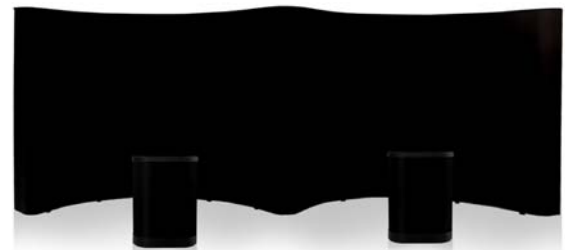
9ft. Fabric Package

Product Code: PU9F



10ft. Fabric Package

Product Code: PU10F



20ft. Gullwing Fabric Package

Product Code: PUGW20F

Case Options



Optional Half Hard Case for 6ft Tabletop Pop Up

Molded plastic hard carry case with inset wheels for easy mobility. Case also has a center grip. 16"W x 39"H x 16"D 24 lbs.



Optional Medium Hard Case for 8ft Tabletop Pop Up

Molded plastic hard carry case with inset wheels for easy mobility. Case also has a center grip. 22"W x 39"H x 17"D 30 lbs.

Fabric Panel Color Options

BLACK
PMS Black c



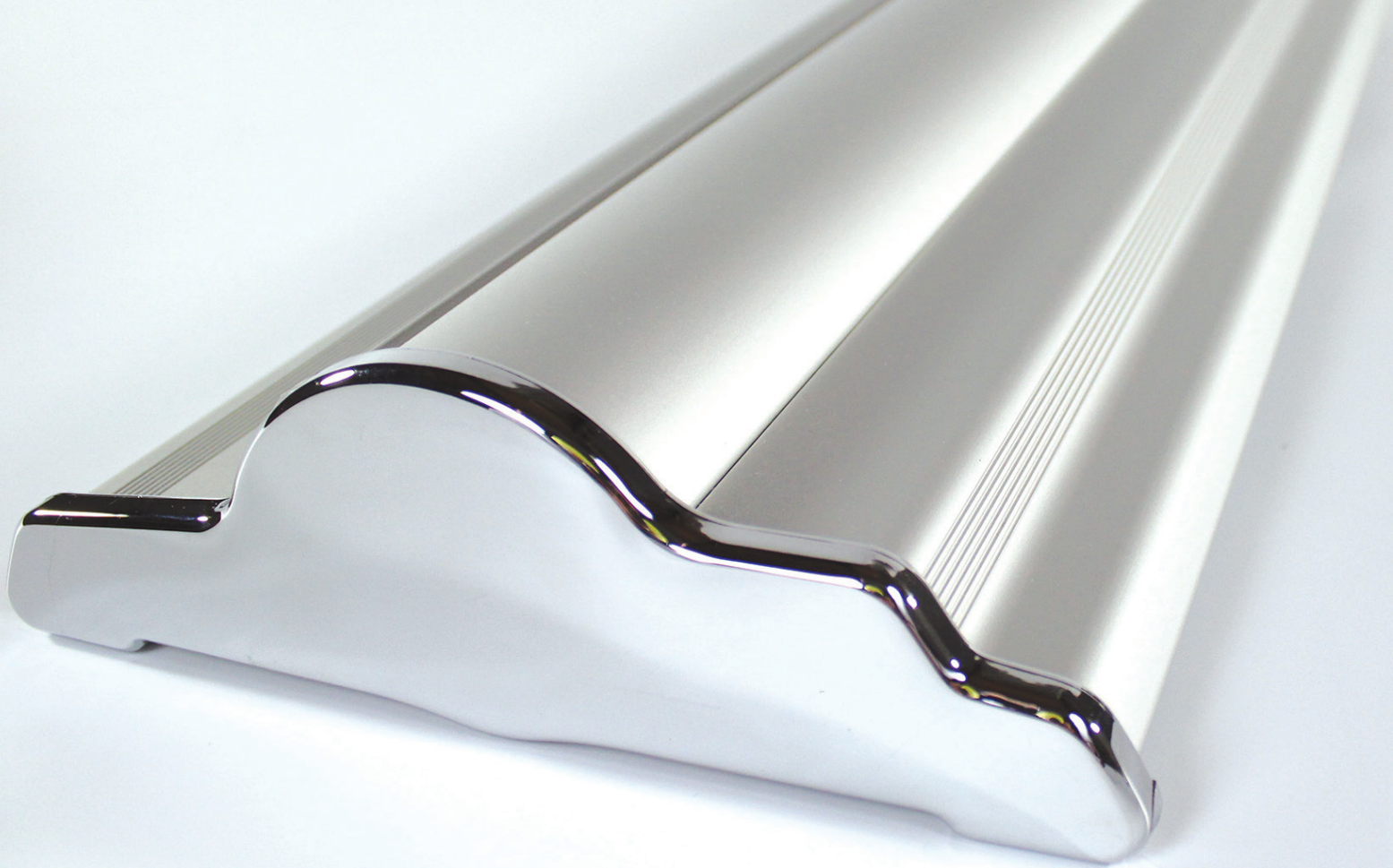
BLUE
PMS 281c



SILVER
PMS 423 c



**Fabric Panels are not available for Half Hard Cases.*



RETRACTABLE BANNER STANDS

Step up your game with the Silverstep retractable banner stand. Uniquely designed to be durable, stylish and reusable, the Silverstep is a fan-favorite and perfect for any occasion. With 4 widths available and a telescopic pole, the Silverstep offers a wide range of dimensions. Place the base on the ground, assemble telescopic pole, pull out graphics and affix to pole. Graphics are easily changeable due to the hook and loop attachment on the canvas leader panel (with a 6" bleed). Deluxe travel bag included. Lifetime warranty on hardware.



SILVERSTEP

BEST SELLER
★★★★★



Super Flat Vinyl Fabric



Silverstep 24"

Product Code: SS24
Height: 85" to 92"
Width: 24"
Base Width: 25.5"
Weight: 12 lbs



Silverstep 36"

Product Code: SS36
Height: 69" to 92"
Width: 36"
Base Width: 37.6"
Weight: 16 lbs



Silverstep 48"

Product Code: SS48
Height: 69" to 92"
Width: 48"
Base Width: 49.5"
Weight: 21 lbs



Silverstep 60"

Product Code: SS60
Height: 69" to 92"
Width: 60"
Base Width: 61.65"
Weight: 24 lbs

SILVERSTEP TABLETOP



Silverstep Tabletop 24"

Product Code: SSTT24
Adjustable Height: 45" to 54"

Silverstep Tabletop 36", 48" & 60"

Product Code: SSTT36, SSTT48, SSTT60
Adjustable Height: 36" to 59"



Deluxe travel bag is included

SILVERSTEP CONNECTOR

The Silverstep Connector features magnetic end caps that allow you to "link" multiple stands to create a large backdrop display. Available in the standard 24", 36", 48" and 60" widths, you can mix and match sizes to accommodate almost any trade show booth size. Graphic change out is easy and enables you to have a fresh look at each event.



Front



Back



Options

Silver Light



RETRACTABLE BANNER STANDS

BABYSTEP



The Babystep has the same reliable components as our flagship product—the Silverstep—only in a smaller form. Just like our other top quality retractables you'll find the Babystep easy to set up, easy to update the graphics, and adjustable. Perfect for your next event.



BABYSTEP 33.5"

Product Code: BS33.5
Display Size: 34"W x 69" to 74"H
Template Size: 33.5"W x 80"H
Weight: 16 lbs
Banner attaches by hook & loop on the bottom



BABYSTEP 36"

Product Code: BS36
Height: 37"W x 69" to 74"H
Template Size: 36"W x 80"H
Weight: 17 lbs
Banner attaches by hook & loop on the bottom



BABYSTEP 39.25"

Product Code: BS39.25
Display Size: 40"W x 69" to 74"H
Template Size: 39.25"W x 80"H
Weight: 18 lbs
Banner attaches by hook & loop on the bottom



Back side

Includes:

- Retractable Stand
- Telescopic Pole
- One Top Clamp Bar
- Support Pole
- Travel Bag

Graphic Material: Fabric

* Small cartridge only works with thin material.



Deluxe travel bag is included

Options



Silver Light

Cord: 8.6ft
50W
Black color is also available.

Clamp Light

35W



LED Clamp Light

110V



ECONOROLL BEST SELLER ★★★★★

The Econoroll packs great value into an easy to use, durable and attractive stand.



On Stand & Graphic

Super Flat Vinyl



Product Code: ER24 / ER31.5 / ER33.5 / ER36
 Display Total Height: 82"
 Template Size: 24"W / 31.5"W / 33.5"W / 36"W x 80"H
 Graphic Material: Super Flat Vinyl (Recommended)
 Base Size: 24.5"W/32"W/34"W/36.5"W x 3.5"H x 3.5"D (15"D with feet)



Silver (24", 31.5", 33.5" & 36")



Black (33.5" only)



Nylon Bag is included.

Options

Silver Light



*(24" stand has one foot.)

PORTABLE ROLL UP



on stand

on graphic

Super Flat Vinyl



This retractable stand is the perfect mix of quality, durability, and ease of use. Graphic installation is made easy with a clamping top bar and double sided tape on the lead. The stand is an upgraded version of the Econoroll.
 A travel bag is included with every order and the stand is backed by a lifetime warranty.



Nylon Bag is included.

Product Code: PR33.5
 Display Total Height: 82"
 Template Size: 33.5"W x 80"H

Options



Clamp Light
35W



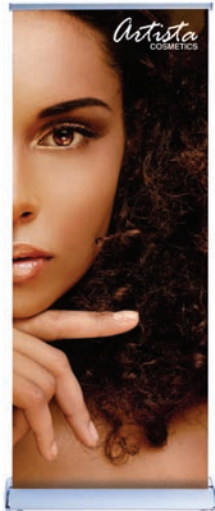
LED Clamp Light
110V

RETRACTABLE BANNER STANDS



SILVERWING

The Silverwing Retractable Banner Stand combines durability with a sleek, streamlined design. Banner set up is simple and only takes a few seconds. A Silverwing travel bag is also included for transport and storage.



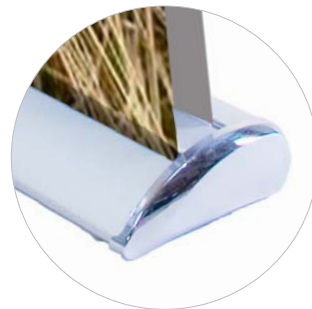
SILVERWING SINGLE-SIDED

Product Code: SW1
Template Size: 33.5"W x 69 to 92"H
Base Size: 35"W x 3"H x 8.5"D



SILVERWING DOUBLE-SIDED

Product Code: SW2
Template Size: 33.5"W x 69 to 80"H
Base Size: 35"W x 3 "H x 8.5"D



Options



Silver Light
Cord: 8.6ft
50W
Black color is also available.

Clamp Light
35W



LED Clamp Light
110V



DOUBLESTEP



On Stand & Graphic



Fabric

DOUBLESTEP 24" & 36"

The Doublestep Banner Stand is a great way to market your company and showcase your products. This double-sided retractable banner stand comes in both 24" and 36" widths and displays two banners back-to-back. It is the perfect blend of design, appeal, durability, and value. It is also easily portable in its foam-padded carry bag (included).

Product Code: DS24 (24") / DS36 (36")

Template Size: 24"W x 85" to 80"H (24") / 36"W x 69" to 80"H (36")

Graphic Material: Fabric

**This cartridge only works with thin material.*

MAUI



On Stand & Graphic



Super Flat Vinyl

MAUI SINGLE-SIDED

This economy version of the Silverwing Retractable Banner Stand is outfitted with the perfect combination of design appeal, durability, and value.

Product Code: MAUI

Template Size: 33.5"W x 80"H

Graphic Material: Super Flat Vinyl

STEPPY



On Stand & Graphic



Super Flat Vinyl

STEPPY

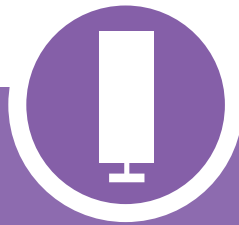
This economy version of the SilverStep Retractable Banner Stand attaches to the top by clamp bar and bottom of stand by double sided tape.

Product Code: STPY

Template Size: 33.5"W x 69" to 92"H

Graphic Material: Super Flat Vinyl

Base Width: 35"



INDOOR BANNER STANDS

Indoor banner stands offer a variety of dimensions to accommodate all of your display needs. A lightweight aluminum frame and quick and easy set-up allow for a professional display in seconds.



On Stand & Graphic



Grasshopper Adjustable

Product Code: GSM / GMD / GLG
 Template Size:
 Small: 18" to 32"W x 63" to 79"H
 Medium: 32" to 48"W x 79" to 86"H
 Large: 48" to 59"W x 83" to 98"H



Small
 Size: 6" x 44"

Medium/Large
 Size: 6.5" x 55.5"



Vinyl



X Banner Stand

Product Code: XSM / XMD / XLG
 Template Size:
 XSM: 24"W x 71"H
 XMD: 31.5"W x 79"H
 XLG: 59"W x 98.5"H



Optional Bag

XSM

Size: 5" x 33" x 2.75"

XMD / XLG

Size: 5" x 44" x 2.75"



Vinyl



Ninja Star Double-Sided

Product Code: NIN
 Template Size: 23.5"W x 36" to 84"H



Size: 50" x 4.5" x 2.5"



Fabric



Zen Bamboo

Product Code: ZEN
 Template Size: 27.5"W x 69"H



Size: 44" x 5.5"



Vinyl



Econom-X Small / Large

Product Code: EXSM / EXLG
 Template Size: Small: 24"W x 62"H
 Large: 31.5"W x 79"H



Size: 44" x 5.5"



Vinyl



L Banner Stand 24"/ 36"

Product Code: L24 / L36
 Template Size: L24: 24"W x 72"H
 L36: 36"W x 83.5"H



L24

Size: 29" x 4.5"

L36

Size: 39" x 4.5"



Fabric

Vinyl



CLASSIC BANNER STAND

The Classic Banner Stand features easy-to-use clutch locks, a heavy duty base, and sleek styling. With adjustable height, and the option of double-sided display, the Classic Banner Stand is perfect for almost any situation. Able to accept both banners and foam core boards, this stand is versatile when it comes to your display needs.



SMALL



Black

Product Code: BN1
Graphic Width: 12"
Graphic Height:
24" to 42"

MEDIUM



Black Silver

Product Code: BN2
Graphic Width: 24"
Graphic Height:
24" to 96"

LARGE



Black Silver

Product Code: BN3
Graphic Width: 36"
Graphic Height:
24" to 118"

Options

Square Base



Travel Base



*(Medium & Large
Banner only)

Mini Spot Light



Travel Bag

Travel bag is for stand with
travel base only.

PROMO STAND DOUBLE



Product Code: PM
Template Size: 24"W x 36" to 72"H
Graphic Material: Fabric



SLIDER BANNER STAND

Searching for a backdrop to have at your event? Envision using the Slider Banner Stand. It can be used as the picture-perfect backdrop for any photoshoot, just like on the red carpet, or as a backwall for any exhibit. It's portability allows you to set it anywhere you like. And, it's great for step and repeat. Uncomplicated to set up, slide the telescopic pole into the pole pockets which are sewn on all 4 sides of the fabric graphic, then screw together the corners to connect the frame. Attach the feet and you're done. The Slider and Mini Slider adjustable frames allow for interchangeable graphics as desired.



Fabric



SLIDER

Product Code: SLD
Width: 81" to 120"
Height: 41.5" to 96"



Carry bag is included.



MINI SLIDER

Product Code: SLD-MINI
Width: 37.5" to 70.5"
Height: 37" to 96"



Carry bag is included.

NEW

COMING IN FEBRUARY 2015

HANGING CLAMP BAR WITH HOOKS

Perfect for retail, hang in store windows or anywhere inside. Aluminum clamp bar on top and bottom holds graphic in place. Included hooks attach to top bar. Single-sided custom graphic on Super Flat Vinyl or Banner Fabric. Widths vary from 2ft. to 7ft. and heights from 2ft. to 10ft. (Hanging wire and ceiling hooks not included.)



Fabric

Vinyl



MORE SIZES AVAILABLE

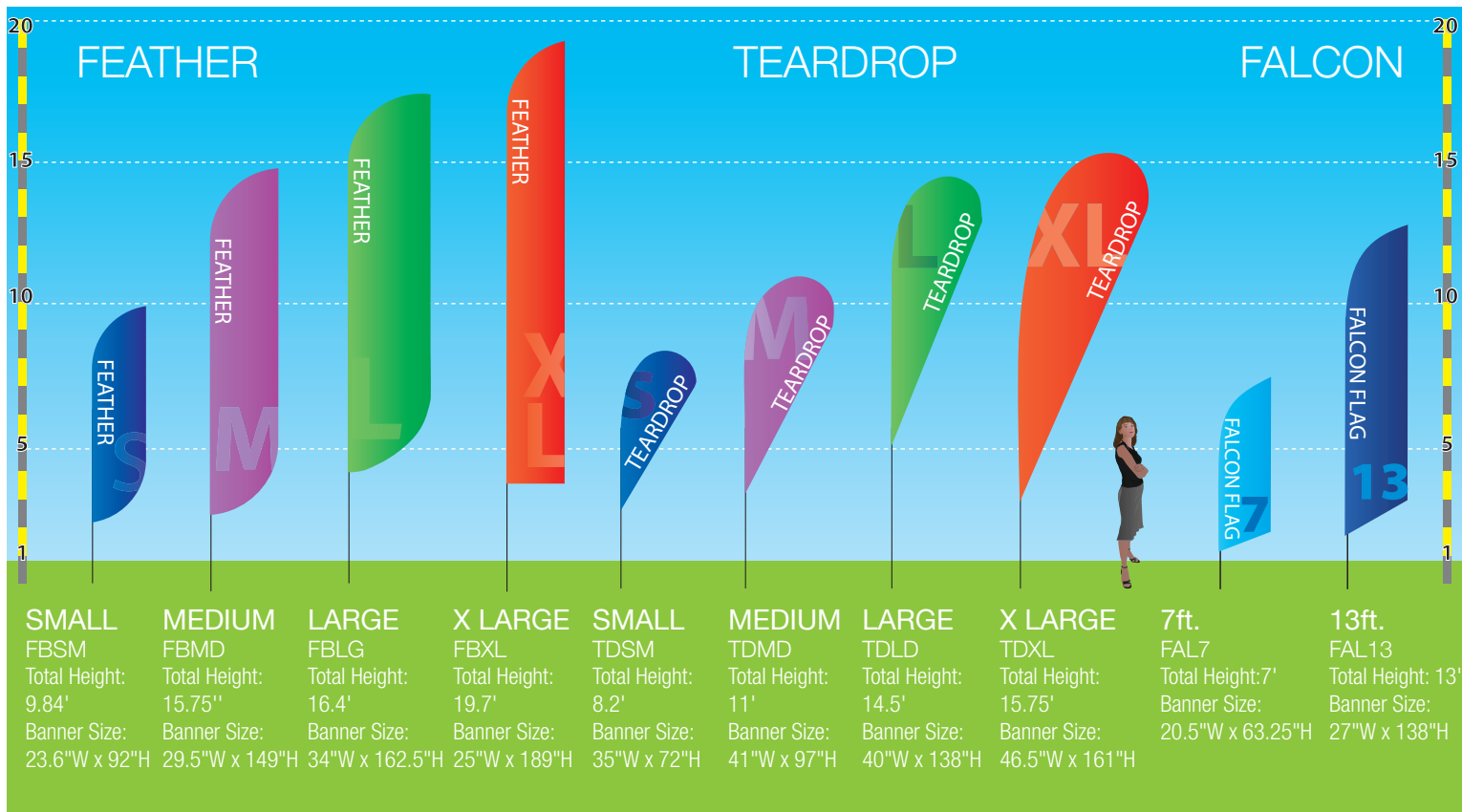


OUTDOOR BANNER STANDS

Outdoor banner stands are able to withstand wind to prevent tipping or falling. A spike base for in-ground display is available in addition to, or instead of, the standard X-base. An optional water bag is available for the X-base to provide additional weight.



FEATHER/TEARDROP



Single-Sided

Image is printed on 1 side of the banner for single-sided displays. The back side shows the see-through mirror image of the front side.
Material: Mesh Fabric



Double-Sided

Two single-sided banners are sewn back to back enabling a double-sided display. A block out material is sewn between the banners to prevent light from shining through.
Material: Mesh Fabric



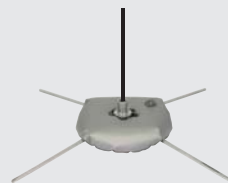
Bases



Spike Base (Included)
Perfect for displaying your banner in the grass or dirt.



X Base (Optional)
The standard X base for use when displaying on flat ground. Small, Medium, Large & XL



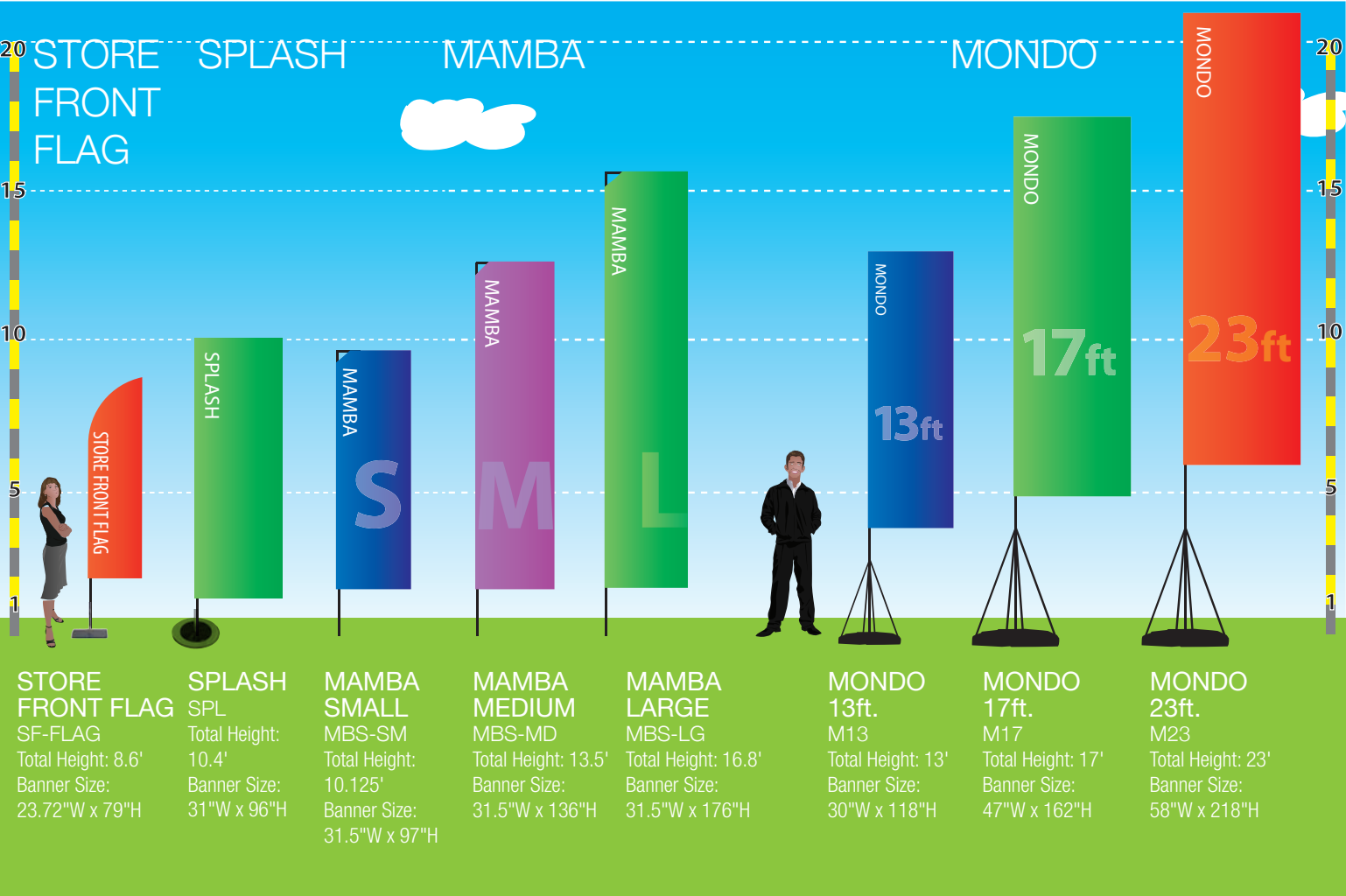
Water Bag for X Base (Optional)



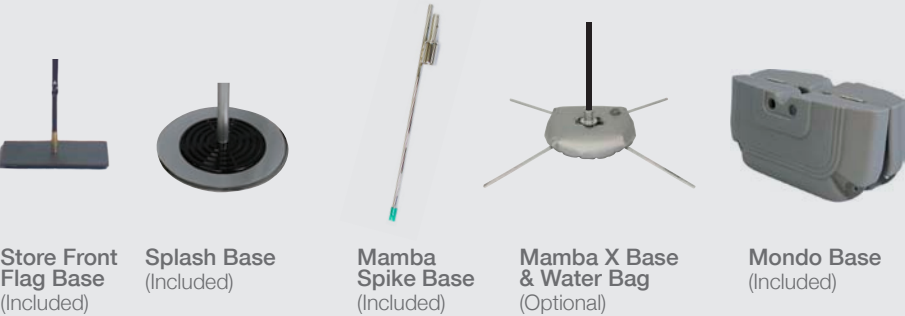
Water Base (Optional)
For Feather, TearDrop and Mamba

STORE FRONT FLAG / SPLASH / MAMBA / MONDO

The Mamba, Splash and Mondo outdoor banner stands are great alternatives to the traditional teardrop and feather style flags. Weighted bases provide support when displaying graphics outdoors.



Bases



Store Front Flag Base (Included)

Splash Base (Included)

Mamba Spike Base (Included)

Mamba X Base & Water Bag (Optional)

Mondo Base (Included)

Bags



Mondo Bags

Mamba Bag

FOUNDATION



Need a place to hang your scrim banner, but don't like the look of zip ties and pvc pipes? Introducing our newest outdoor banner, the Foundation — A good-looking display perfect for scrim banner with grommets. Use on any field or at any event. It's simple, triangular configuration is made of lightweight aluminum tubes that come apart to fit inside the included nylon bag. Tubes lock together using push button snaps to form the frame. Girth hitch the bungee cords to the frame and slip each hook through its corresponding grommet. Single-sided or double-sided printed graphic option.



Frame Only

Product Code: FND-FRM

Total Display Size: 81.5"W x 37"H x 42"D

Single-Sided Graphic Package

Product Code: FNDG1

Template Size: 78.75"W x 38.5"H

Double-Sided Graphic Package

Product Code: FNDG2

Template Size: 78.75"W x 38.5"H (one side)

OBW (OUTDOOR BANNER WALL)



The Outdoor Banner Wall is your solution for large outdoor banner displays. Water-filled bases provide support and stability. The adjustable height and double-sided display capabilities allow the Outdoor Banner Wall to be a versatile stand that can be used for countless events.



Stand Only

Product Code: OBW

Total Display: 8' x 9'

Single-Sided Graphic Package

Product Code: OBW1

Template Size: 8'W x 8'H

Double-Sided Graphic Package

Product Code: OBW2

Template Size: 8'W x 8'H (each side)

OBW Base

Base Size: 9.75" x 30.5"

Water Capacity: 50 lbs each



OUTDOOR BANNER STANDS

CASITA CANOPY FULL COLOR PRINT

UV TENT 20ft. PACKAGE

Product Code: CAS-CST20UV

Display Size: 20'W x 10.8'H

Canopy Template Size (Front): 232" x 88.5"

Graphic Material: UV Tent Fabric

**Backwall & Sidewall are optional.*



Black Nylon Bag is included.



Leg height is adjustable.

BEST SELLER



UV TENT 10ft. PACKAGE

Product Code: CAS-CST10UV

Display Size: 10'W x 10.8'H

Front Template Size: 121.5" x 84.25"

Graphic Material: UV Tent Fabric

Package Includes:

Aluminum Frame

Black Nylon Bag

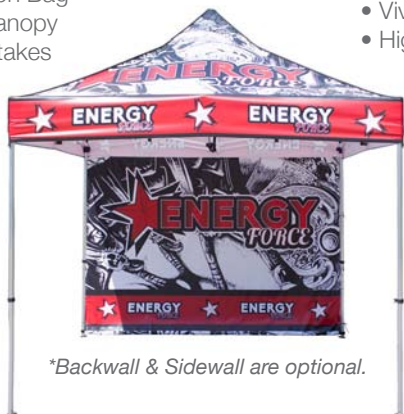
Printed Canopy

Rope & Stakes



New Tent material

- Water resistance
- Vivid color
- High quality finish



UV TENT 15ft. PACKAGE

Product Code: CAS-CST15UV

Display Size: 15'W x 10.8'H

Canopy Template Size (Front): 175.5" x 84.25"

Graphic Material: UV Tent Fabric

**Backwall & Sidewall are optional.*



CLASSIC CASITA CANOPY FULL COLOR 10ft. PACKAGE

Product Code: CAS-CST10

Display Size: 10'W x 10.8'H

Front Template Size: 121.5" x 84.25"

Graphic Material: Tent Fabric

**Backwall & Sidewall are optional.*

Backwall

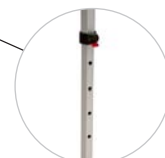


Sidewall

Optional Flag



Flag Holder
(It can hold small size
Feather banner.)



Leg height is adjustable.

CASITA CANOPY STOCK

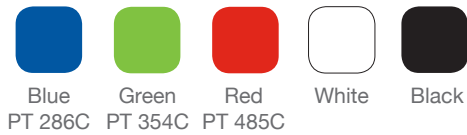
CASITA CANOPY STOCK 10ft.

Product Code: CAS-STK10
Canopy Material: Poly-brand

Package Includes:

- Aluminum Frame
- Black Nylon Bag
- Canopy
- Ropes & Stakes

AVAILABLE CANOPY COLORS:



Blank (No Logo)



Heat Press: 1 Color Logo



Heat Press: 2 Color Logo



Heat Press Logo Color

Available Logo Colors*:

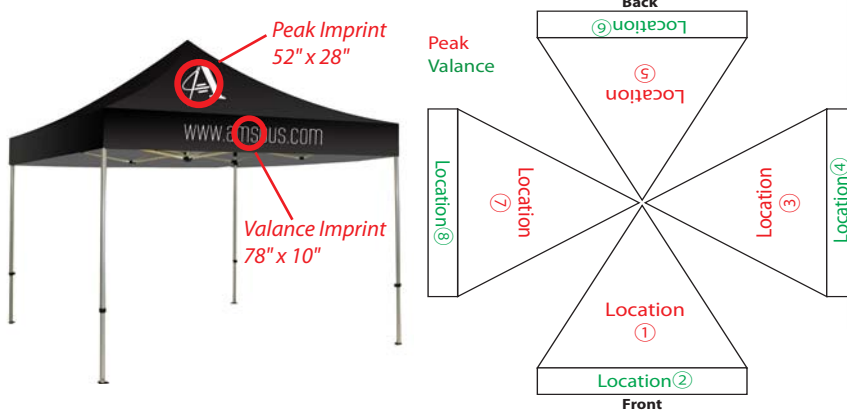


* Logo(s) that have more than 2 colors or are too complex will not work for the Heat Press system.

Logo Color Specification



Print Locations



Accessories



Rope (Included)



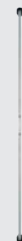
Stakes (included)



Sand Bag



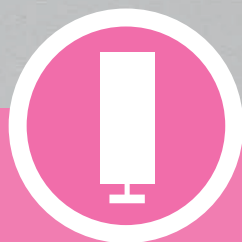
Travel Bag with wheels



Rail for Back/Half Wall



Flag Holder



DISPLAY STANDS

Looking for an interactive attraction? Engage others with the brand new Jotter Tablet Display—a great tool for trade shows, office lobbies, or retail! The Jotter stand has a pivotal head, allowing you to rotate the tablet 360° and adjust the angle 135°. Simply, insert the tablet and use the key to lock the case. The tablet is snug, secure and ready to use. The case allows for a working front and back camera as well. Use them anywhere you want to be hands-free. The Jotter Tabletop Tablet Display can be used to customize any display or countertop. To mount, simply drill into desired tabletop or display, and voila! Compatible with 2nd, 3rd and 4th generation iPad tablets. Available in 3 styles. Choose from Black or White.



On Stand & Graphic

JOTTER TABLET STAND A

Product Code: JTS-A **BEST SELLER**
★★★★★



JOTTER TABLET STAND B

Product Code: JTS-B



JOTTER TABLET TABLETOP

Product Code: JTS-C



IS-1

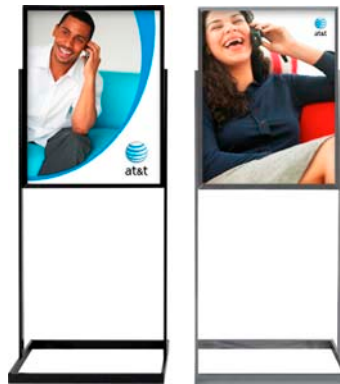
BEST SELLER
★★★★★

Product Code: IS1
Graphic: 22"W x 28"H
Base Size: 10"W x 14"H



IS-2

Product Code: IS2
Graphic: 22"W x 28"H
Display size: 60"H (from the ground)



BERTY SNAP FRAME

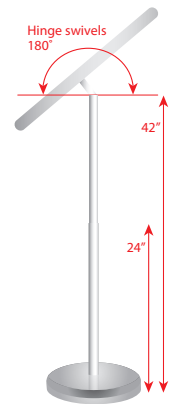
SMALL

Product Code: BSFSM
Graphic: 8.5"W x 11"H



LARGE

Product Code: BSFLG



SPRING SNAP FRAME

Product Code: SSF



WATER BASE SNAP FRAME

Product Code: WBSF
Graphic: 23.25"W x 33"H
Display Size: 32"W x 46.5"H x 20"D





HANGING BANNERS

Dude, where's your booth? Get seen from practically anywhere with the Skybox Hanging Banner above your booth. Guide exhibitors your way like the stars in the sky. American-made fabric graphics stretch and zip shut over the all-aluminum, durable frame. Styles available include circles, squares, triangles, pinwheels, etc. Height and diameter sizes vary. New larger 20 ft. diameter size now available for circle and square shapes. Includes soft carry bag. Four to ten business day turnaround time starts the day after proof approval.



NEW

CIRCLE, SQUARE & TRIANGLE 5ft.

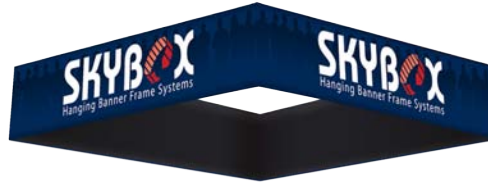


CIRCLE

Product Code: HBCIR

Display Diameter: 5', 8', 10' 12', 15' & 20'

Display Height: 2', 2.5', 3', 3.5', 4', 5' & 6'



SQUARE

Product Code: HBSQR

Display Diameter: 5', 8', 10' 12', 15' & 20'

Display Height: 2', 2.5', 3', 3.5', 4', 5' & 6'



TRIANGLE

Product Code: HBTRI

Display Diameter: 5', 8', 10' 12' & 15'

Display Height: 2', 2.5', 3', 3.5', 4', 5' & 6'



TAPERED TRIANGLE

Product Code: HBTPDTRI

Display Diameter Size: 10' & 16'

Display Height: 4' & 5'



TAPERED CIRCLE

Product Code: HBTPDCIR

Display Diameter Size: 10', 14' & 15'

Display Height: 3.5' & 4'



TAPERED SQUARE

Product Code: HBTPDSQR

Display Diameter Size: 10', 12', 14' & 15'

Display Height: 3.5'



CURVED SQUARE

Product Code: HBCRVSQR

Display Diameter Size: 12'

Display Height: 5'



CURVED TRIANGLE

Product Code: HBCRVTRI

Display Diameter Size: 12'

Display Height: 4'



FOOTBALL

Product Code: HBFTB

Display Diameter Size: 10'

Display Height: 3.5', 4' & 5'



PINWHEEL

Product Code: HBPWL

Display Diameter Size: 10', 14' & 16'

Display Height: 3' & 5'



WAVE

Product Code: HBWW

Display Diameter Size: 10', 14' & 16'

Display Height: 3', 4' & 5'

Package includes:

- (1) Collapsible extruded aluminum hanging sign frame (includes curved stabilizer, quarter circle, curved connector.)
- (1) Full color zippered tension fabric graphic print
- Nylon travel bag
- Hanging cable
- Chain, spring, eye hook, large screw, hook loop lock, screw tightener

Inside Fabric or Graphic Option

- Single-Sided: You can choose white or black fabric color.
- Double-Sided: Additional 50% of the outside package price will be charged.



Hanging Banner comes with nylon travel bag



TABLE THROWS

Table Throws are a great addition to your trade show booth and are sized to fit standard 6ft and 8ft tables. Available in full graphic prints. There are two different styles available to suit your needs. The open back version has a full-length front and side material with a shorter edge on the backside. The full back version has full length material on the front, back and both sides of the table.



On Graphic



TABLE THROW STOCK (BLANK, 1 COLOR & 2 COLOR)

Table throws are a great addition to your trade show booth and are sized to fit standard 6ft and 8ft tables. Available with 1 or 2-color heat transfer graphic prints. There are two different styles available to suit your needs. The open back version has full length front and side material with a shorter edge on the backside. The full back version has full length material on the front, back and both sides of the table.



Back (3 sided)



Back (4 sided)

Available Fabric Colors

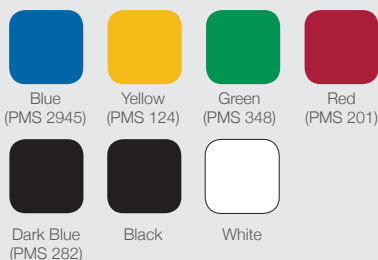


Blue (PMS 661c) Gold (PMS 1235c) Lime Green (PMS 354c) Green (PMS 350c) Red (PMS 202c) White Grey Black

Imprint Area



Available Logo Print Color*



Logo Color Specification



TABLE THROW CUSTOM (FULL COLOR)

Table Throws are a great addition to your trade show booth and are sized to fit standard 6ft and 8ft tables. Available in full graphic prints. There are two different styles available to suit your needs. The open back version has a full-length front and side material with a shorter edge on the backside. The full back version has full length material on the front, back and both sides of the table.



Back (3 sided)



Back (4 sided)



Front



Back (3 Sided)



Back (4 Sided)

TABLE RUNNER CUSTOM

Our table runners are custom printed and are available in 2ft, 3ft, 4ft, and 5ft widths. We offer them in full drape and open back styles to match your existing table throw.

LITERATURE STANDS

EZ FROST BEST SELLER ★★★★★

The EZ Frost features 6 shelves for displaying literature with easy set up. The frosted shelves provide a clean and professional look. Single and double widths are available and both sizes include a hard carrying case for easy transport.

EZ FROST SINGLE

Product Code: LIT-EZF1
Dual Height Options: 50.5" and 59"
Base Size: 10.5"W x 14"D
Display Area: 9"W x 12.25"H
Case Size: 19"W x 13"H x 7.5"D



Includes deluxe hard case

EZ FROST DOUBLE

Product Code: LIT-EZF2
Dual Height Options: 50.5" and 59"
Base Size: 17.5"W x 14"D
Display Area: 16.5"W x 12"H
Case Size: 21"W x 17.5"H x 6.75"D



Includes deluxe hard case

MESH

This rollable literature stand is compact and convenient to transport. The display sets up in seconds and includes a travel bag for storage. The single width unit features 4 mesh pockets and the double width unit is available with 8 mesh pockets.

MESH SINGLE

Product Code: LIT-MESH1
Display Size: 11.25"W x 45"H



MESH DOUBLE

Product Code: LIT-MESH2
Display Size: 20.25"W x 45"H



CASES & BAGS

NEW

COMING IN FEBRUARY 2015

LA CAJA HARD CASE W/WHEELS & HANDLE

Product Code: LACAJA

Outside Dimensions:

16.9"W x 64.6"H x 10.6"D

Application: Casita Canopy, Mammoth



GRASSHOPPER BAG

Small

Product Code: G-BAGSM

Dimensions: 44"W x 6"H

Weight: 2 lbs

Medium/Large

Product Code: G-BAGMDLG

Dimensions: 55.5"W x 6.5"H

Weight: 2 lbs



X-BAG

XSM

Dimensions: 36"W x 4"H x 4"D

Weight: 3 lbs



XMD & XLG

Dimensions: 48"W x 4"H x 4"D

Weight: 3 lbs



SILVER BAG 24"

Product Code: SBAG24

Dimensions:

28.5"W x 12"H x 4"D

Weight: 5 lbs



SILVER BAG33.5"

Product Code: SBAG335

Dimensions:

37"W x 12"H x 4"D

Weight: 6 lbs



SILVER BAG 36"

Product Code: SBAG36

Dimensions:

41"W x 12"H x 4"D

Weight: 6 lbs



SILVER BAG 48"

Product Code: SBAG48

Dimensions:

51.5"W x 12"H x 4"D

Weight: 7 lbs



SILVER BAG 60" with Wheels

Product Code: SBAG60

Dimensions:

64"W x 12"H x 4"D

Weight: 9 lbs



PODIUM CASE

Product Code: PU-POD

Outside Dimensions:

27.5"W x 39"H x 15.75"D

Inside Dimensions:

25"W x 31.75"H x 14.25"D

Weight: 31 lbs

Application:

Pop Up Display

**Optional Graphic Wrap is available.*



MEDIUM HARD CASE

Product Code: MHC

Outside Dimensions:

22"W x 39"H x 17"D

Inside Dimensions:

20.5"W x 32.5"H x 12"D

Weight: 31 lbs

Application: Ready Pop Display

Medium & Large

**Optional Graphic Wrap is available.*

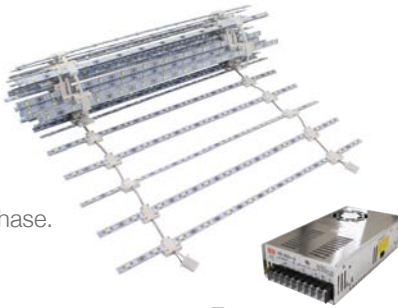


LIGHTS

NEW

LADDER LIGHT

Product Code: RESORT-LDLTS
Application:
Mammoth, Vail-60S, Vail-100D,
Vail-120D & Vail-120DB
* Transformer will be set to purchase.



Transformer

NEW

RESORT LIGHT STRIP

Product Code: RESORT-LS
Application:
Mammoth, Whistler, Vail-60S,
Vail-100D, Vail-120D & Vail-120DB



POP UP LED LIGHT

Product Code: PU-LEDLIGHT
Shipping Dimensions:
6" x 6" x 24"
Weight: 2 lbs
Application:
Pop Up Displays



READY POP LED LIGHT

Product Code: RP-LEDLIGHT
Shipping Dimensions:
6" x 6" x 24"
Weight: 2 lbs
Application:
Ready Pop Displays
RPL Fabric Pop Up



EZ TUBE LED LIGHT

Product Code:
EZT-LEDLIGHT
Shipping Dimensions:
6" x 6" x 24"
Weight: 3 lbs
Application:
EZ Tube Displays



ASPEN SMALL LIGHT

Product Code: AF-LIGHTSM
Dimensions: 4" x 4" x 20"
Weight: 2 lbs
Application:
Aspen Fabric Frame



ASPEN LED LARGE LIGHT

Product Code: AF-LIGHTLG
Dimensions: 6" x 6" x 24"
Weight: 2 lbs
Application:
Aspen Fabric Frame



T135 LED LIGHT

Product Code: T135
Weight: 2 lbs
Application:
Pop Up Display
Fabric Pop Up
Tahoe Displays
Aspen Displays



CLAMP LIGHT

Product Code: CLIGHT
Dimensions:
6" x 6" x 24"
Weight: 2 lbs
Application:
L Banner Stand
Retractable Banners



CLAMP LED LIGHT

Product Code: CLEDLIGHT
Dimensions:
6" x 6" x 24"
Weight: 2 lbs
Application:
L Banner Stand
Retractable Banners



VEGAS LIGHT

Product Code: VLIGHT
Dimensions:
4" x 4" x 20"
Weight: 2 lbs
Application:
Pop Up Displays
Ready Pop Displays



SILVER LIGHT

Product Code: SLIGHT
Cord: 8.6ft
50W
Dimensions:
4" x 4" x 20"
Weight: 2 lbs
Application:
Retractable Banners



BLACK LIGHT

Product Code: BLIGHT
Cord: 8.6ft
50W
Dimensions:
4" x 4" x 20"
Weight: 2 lbs
Application:
Retractable Banners



PRINTING SERVICE

DIGITAL PRINTING COLOR INFORMATION

Offset vs. Digital

Digital printing offers a shorter turnaround and more consistent end results than offset printing. Digital printers do not print PMS and RGB colors. These colors will have color shifts.

Spot Color Matching

Although digital printers do not print PMS colors, our production team will manually adjust the color output to match your spot colors upon request (per color). Please ask us about color matching service when you upload your files. *



Material

Printed colors look slightly different depending on materials. Refer to the material descriptions for more information.

Outdoor Use

Our outdoor banners are printed with UV-safe inks to prolong the life of your banner. They are hemmed around the edges for long life and can be grommeted for easy display outside your building or event.

Reprinting

If you are in need of graphics from your previous orders printed by us, let us know before you approve proofs. To match colors with previously printed banners, we need extra time and information from you. We typically hold files for 1 year. By request, we can back up files for future use.

FINISHING OPTIONS



Grommets

Banner edges are hemmed with #2 grommets in corners. Available grommet colors: brass, silver, gun metal & black.



Hem

We add a 1" bleed that is folded over and double stitched with white thread. Can be performed to entire perimeter of banner.



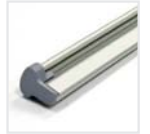
Pole Pocket

The top and bottom of the banner is folded over and sewn creating a pocket that accepts dowels.



Clamp

Top and/or bottom bars clamp to banner.



Hook & Loop

Banners attach via hook & loop strips on top and bottom.



Magnet

Magnetic strips on sides of panels magnetically attach to channel bars on frame.



PRINTING METHODS

THERMAL TRANSFER (HEAT PRESS)

Our thermal transfers allow 1 to 2 color images to be applied to our stock table throw and stock casita canopy products. Using thermal transfer vinyl, we die-cut and weed your image, then apply it to the stock product using a high temperature, large format heat press.

Used for: [Casita Canopy Stock](#), [Table Throw Stock](#)

DIGITAL INKJET LAMINATED PRINTING

Using a high resolution, 4-color process, we are able to output images up to 1080dpi onto titanium film media. Once this entire image is printed, we overlay laminate—using a cold-process laminator—for durability.

Used for: [Titanium Film w/Laminate](#)

UV PRINTING

Using the 4-color process (plus light cyan and light magenta), we create weather resistant images for outdoor graphics using ultraviolet curable inks.

Used for: [Super Flat Vinyl](#), [Scrim Vinyl](#), [UV Casita Canopy](#), [UV Backlit](#), [PVC](#)

DYE-SUBLIMATION

The direct-to-fabric printing process applies the ink directly to the fabric using the 4-color process. The print then goes through the sublimation process of heat-plus-time to create beautiful, photo images.

Used for: [All Fabric \(except UV fabrics\)](#)