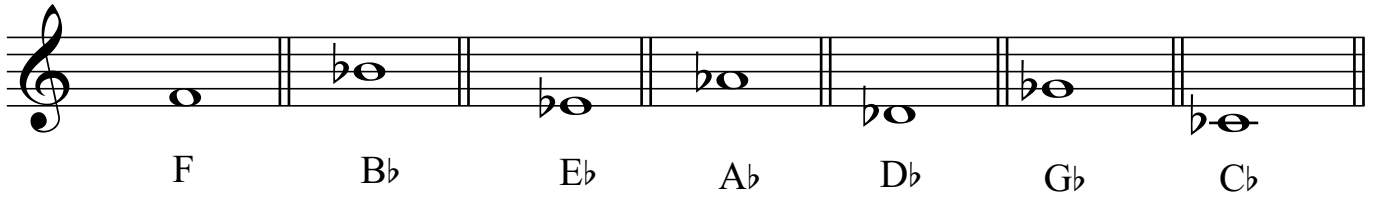


# Tetrachords

The staff below shows the names of all the tetrachords that use flats.



The F tetrachord has one flat (B $\flat$ ). Each tetrachord adds one new flat as shown below.

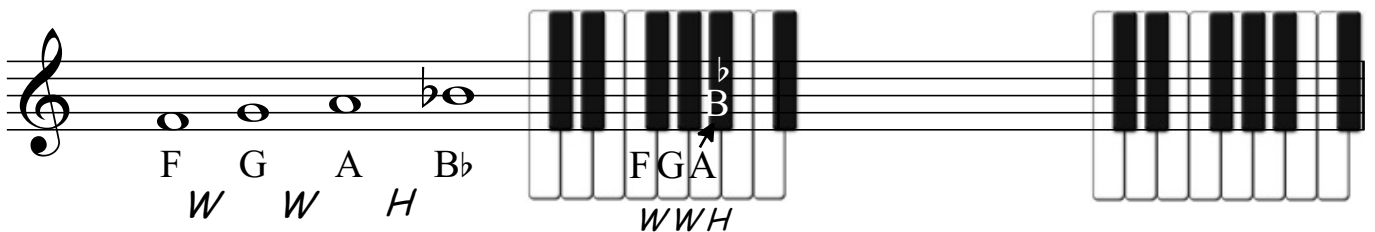
## F Tetrachord

To create a half step above A,  
B is lowered to a flat.

This creates the half step required  
between the 3rd and 4th note.

*Exercise:*

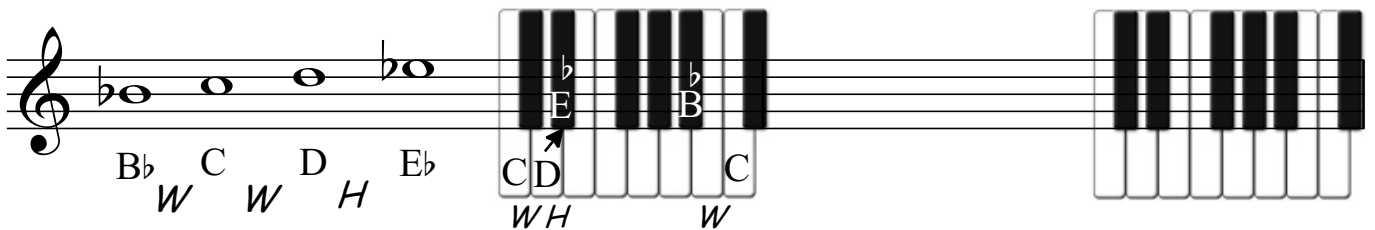
Copy each tetrachord to the keyboard and staff.



## B $\flat$ Tetrachord

To create a half step above D, E is lowered to a flat.

This creates the half step required between the 3rd and 4th note.



## E $\flat$ Tetrachord

To create a half step above G, A is lowered to a flat.

This creates the half step required between the 3rd and 4th note.

