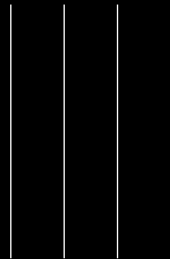




RW GATE
COMPANY



**EXPERIENCE BETTER
WATER CONTROL**



ROSS
1873 VALVE

Affiliated Company



RW GATE
COMPANY

RW Gate Company designs and manufactures the highest quality and longest lasting water control gates and related equipment.

Our rugged, heavy-duty gates are substantially constructed and fitted with a wear-resisting seal system – making the RW Gate an unparalleled long-term solution and value.



RW Gate Company is an extension of the 138 year-old Ross Valve Manufacturing Company, one of the oldest and most respected providers of water control products and services.

With this outstanding pedigree, you can be assured that RW Gate brings the same level of stability, commitment and service that has earned Ross Valve its international reputation for industry leadership.



RW Gate headquarters are at the 16-acre Ross Technology Park in Troy, NY; housing our team of professionals who are deeply experienced in all facets of the water control gate industry.

Our gates are specified for multiple uses in the following industries and others:

MUNICIPAL WATER & WASTEWATER

INDUSTRIAL

FLOOD CONTROL

HYDROPOWER

DAMS





RW GATE
COMPANY

We bring an unmatched level of detail, responsiveness and commitment to the production of high quality, low leakage gates.

- › We are rock-solid, backed by an industry-leading manufacturer that brings 6 generations of experience in water control combined with personnel with a deep expertise in gates.
- › Our rugged, heavy-duty gates are more substantial and built more solidly than those of other manufacturers.
- › Our gates utilize durable, UHMWPE seals that do not require field adjustment.
- › We meet or exceed AWWA gate standards and we are A.I.S. and Buy American compliant
- › ISO 9001:2008 certified



RW1000-S SLUICE GATE
STAINLESS STEEL MODEL SHOWN

PRODUCTS

Sluice Gates +

Slide Gates +

Stop Log Assemblies +

Stop Gates +

Flap Gates +

Telescopic Valves +

Mud Valves +

Shear Gates +



Sluice Gates are heavy duty flow control devices that consist of a frame, slide and operating mechanism. Sluice gates are provided with seals along all four sides of the opening. They are typically used to stop or control flow through an orifice in a wall.



Stop Log Assemblies are flow control devices that consist of a frame and multiple stacking logs. Each stop log is provided with seals along the sides and across the bottom. Stop logs are typically used to stop flow or control level in a basin or a channel. Our low leakage stop log assemblies are outfitted with resilient seals to restrict leakage and they can be designed to handle high head applications. Stop logs can be provided in stainless steel or aluminum.



Slide Gates are flow control devices that consist of a frame, slide and operating mechanism. Slide gates are provided with seals along the sides and across the invert of the opening and they are typically used to stop flow, control flow or control level in a basin or a channel.



Weir Gates are flow control devices that consist of a frame, slide and operating mechanism. Weir gates are downward opening slide gates

Flap Gates are back flow prevention devices that are designed to open under an unseating head condition and close under a seating head condition. The flap is mounted offset from vertical to ensure a positive closing via gravity. A resilient seal is utilized to achieve low leakage between the frame and flap. Flap gates can be provided in stainless steel, aluminum or HDPE plastic.



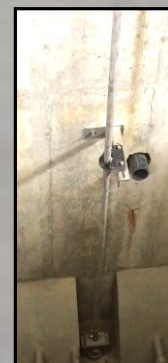
Telescopic Valves are flow control devices that utilize an adjustable slip tube that travels in a receiving pipe of larger diameter. Telescoping valves can be provided in stainless steel.



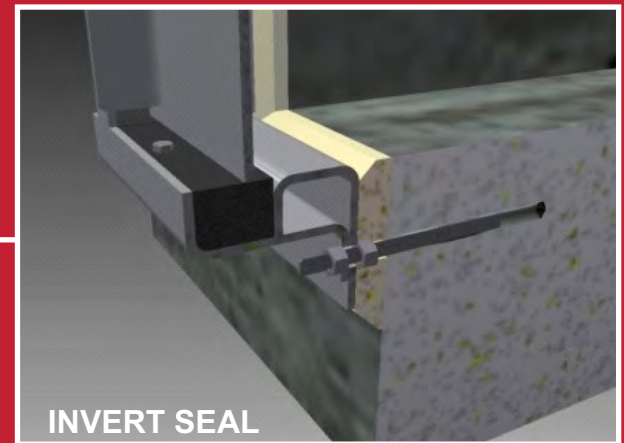
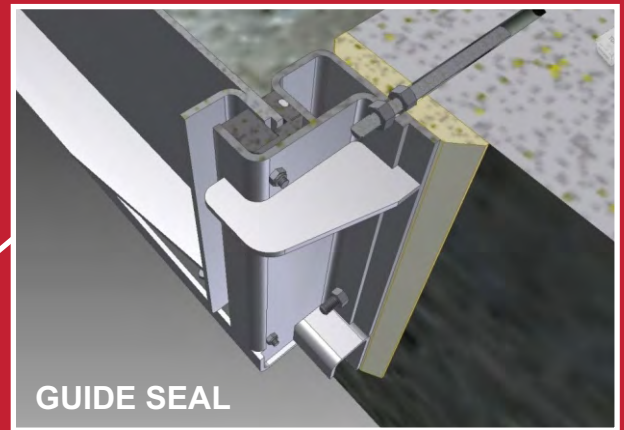
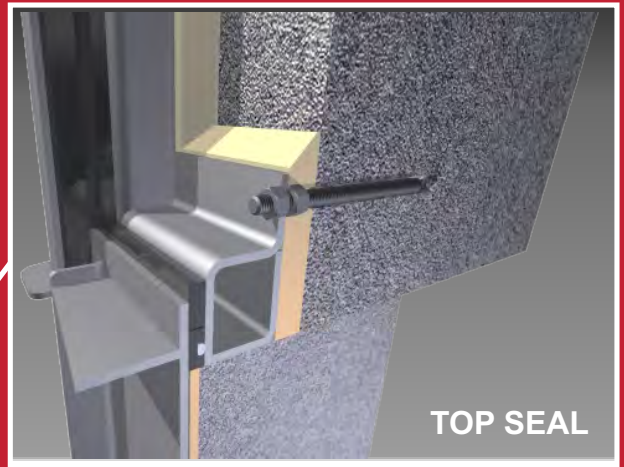
Shear Gates are manually operated flow control devices for small openings in low head operations. Shear gates can be provided in stainless steel.



Stop Gates are flow control devices that consist of a frame and one or more slide plates. Stop gates are economical, hand-lift gates.



Mud Valves are primarily used to open or close a drain in the bottom of basins and channels. The resilient seal utilized by RWG ensures a tight shutoff. Mud valves can be anchored to the concrete floor or pipe flange mounted. Mud valves can be provided in stainless steel or HDPE plastic.



RW1000-S SLUICE GATE



RW GATE
COMPANY

Ross Tech Park
75 102nd St
Troy, New York,
USA, 12180

Direct inquiries to:
Sales Department
sales@rwwgate.com
518-874-4750

www.rwwgate.com

We meet or exceed AWWA gate standards
and we are A.I.S. and Buy American compliant

ISO 9001:2008 certified

A Ross Valve affiliated company



Since 1879

RWGEN17- 5000