



WNCFHG NEWSLETTER

Western North Carolina Fibers/Handweavers Guild, Inc.

PO Box 9784 Asheville, NC 28815

2014-2015 BOARD MEMBERS

President

Marjorie Warren

Vice President

Judi Jetson

Secretary

Pat Brown

Treasurer

Susan Boykin

Member at Large

Patty Caruso

COMMITTEES

Blue Ridge Fiber Show

Teena Tuenge

Community Service

Patricia Koss

Historian

Ursula Powers

Hospitality

Teri Beth Darnall

Librarian

Susan Trotter

Membership

Marjorie Krueger

NC Mountain State Fair

Gail Griffith

Newsletter

Catherine Alter

Southeast Animal Fiber Fair

Ellen Turpening

Website Contact

Ruth Howe

Retreat

Jane Champion

"You see, when weaving a blanket, an Indian woman leaves a flaw in the weaving to let the soul out."

Martha Graham

President's Message

Marjorie Warren

A Busy Season

We are always busy- we Guild members. Busy with our weaving, spinning dyeing, sewing, knitting and all the activities related to these. However, the coming weeks will be especially laden with more opportunities for us to engage in our work, learn more about our talents and skills, and display the results of our work.

We just finished a very successful Fiber Forum with several of our guild members participating in various classes. The fruits of our labors will be shared at our May meeting Show and Tell.

We are anticipating a lace workshop with Robyn Spady at The Folk Art Center just before our May meeting, and at our May meeting we will have the pleasure of having Robyn Spady give our program. Fiber Day also coincides with our May meeting, and we are encouraging everyone to come over to The Folk Art Center and try their hand at various fiber related events. Fiber Day continues on Mother's day--Sunday. We will not want to miss the super duper Textile Fashion Show (1pm & 3pm) at The Folk Art Center produced by the incomparable Liz Spear.

The Heritage Weavers had a Grand Spring Festival April the 25th and the Boarding House was all spring cleaned and ready for all the activities offered to children and adults alike, especially the Sheep to Shawl. Oh! Happy day, it did NOT rain as predicted. These events are some wonderful opportunities. I hope you can make them.



Program for May

Weaving TNT: Dynamite Tips 'n Techniques for Every Weaver

Would you like to learn a great method for repairing a broken warp end, tracking your treadling while you weave, making your own repair heddles, or making weaving easier and more fun? This “prop-riddled” seminar looks and feels like an interactive show-and-tell and will introduce over 36 offbeat tools, techniques, or tricks to assist weavers in all phases of weaving.



Robyn Spady was introduced to handweaving as a baby with her handwoven baby blanket woven by her great-grandmother. Inspired by her *blankie*, she learned to weave at

a young age and has been weaving for over 40 years. She completed HGA's Certificate of Excellence (COE) in 2004 with the specialized study *Loom-controlled Stitched Double Cloth*. Robyn is fascinated by the infinite possibilities of crossing threads and loves coming up with new ideas to create fabric and transform it into something new and exciting. She is committed to turning the weaving world on to double-faced fabrics, four-shaft weaves, uncommon and advanced weave structures, and narrow warp weaves.

I am fascinated by the infinite possibilities of crossing threads and love coming up with new ideas to create fabric and transform it into something that has never existed before. My intrigue with stitched double cloth encouraged me to explore the many ways to weave double-faced fabrics as a way to create versatile fabrics that are reversible, self-lined, etc. In addition to double-faced fabrics, I love to discover weaves, uncommon and unusual weave structures,

2015 GUILD CALENDAR

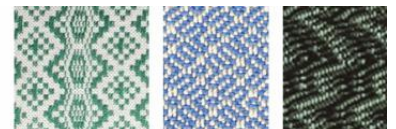
- February 14** Winter projects – bags and Kathrin Weber – **Controlling Creative Chaos**
- March 14** Amy Putansu - **Textile Exhibits in China, World Shibori Symposium**
- April 11** Liz Spear- **Sewing Your Handwoven - Beyond the Bog Jacket**
- May 9** Robyn Spady – **Weaving TnT: Dynamite Tips 'n Techniques for Every Weaver**
- May 9 & 10** **Fiber Days at the Folk Art Center**
Come join the fun!
- June 13** Susan Leveille – **A Personal History of Fiberarts in WNC**
- July 11** Neal Howard – **The Magic of Silk**
- August 8** Cara May – **Wabi-Sabi Knitting**
- September 12** Retreat: **Surface Design Sampler**
including shibori, monoprints on silk, stamping, & ice dyeing
- October 10** Judi Jetson & friends – **Making a Good Local Yarn**
- November 14** Potluck

(continued)

especially if they can be woven on only four-shafts. Recently, I've also been studying how elaborate trims can be woven on narrow warp

For many of us, weaving is a type of circle of life. The loom my great-grandmother used to weave my baby blanket on over 45 years ago is in use on a daily basis helping me transfer my inspirations into new fabrics and inspiring new generations of weavers.

Spady
Studios



Treasurer's Reports



Susan Boykin

March 2015 WNCFHG Report

Beginning Balance March 1, 2015	\$12,819.91
Income:	
Dues	375.00
Workshops	260.00
Misc (ads, datebook)	<u>30.00</u>
Total Income	\$665.00
Expenses:	
Program	<u>100.00</u>
Total Expense	\$100.00
Ending Balance March 30, 2015	\$13,384.91

March 2015 Blue Ridge Fiber Show Account

Beginning Balance January 1, 2015	\$5,883.43
Income:	
BR Show Sales	1,279.60
Misc (pin cushion)	12.00
Sale – towels	<u>50.00</u>
Total Income	\$1,341.60
Expenses:	
BR Sales	1,279.60
Honorarium	150.00
Award (*)	<u>100.00</u>
Total Expense	1,529.60
Ending balance March 30, 2015	\$5,695.43

*replaced check lost in mail

Community Bulletin Board

Local Cloth

May 7 - Robyn Spady on Marketing for the Fiber Artist (join us for a potluck and talk with Robyn from 5:30 – 7:30pm, HandMade in America, 125 S Lexington. Bringing over 20 years of professional marketing and communications experience, Robyn will lead a seminar for fiber artists seeking to improve their marketing skills and grow their business. Free, just bring a dish to share.

June 6 – Fiber and textile enthusiasts can plunge their hands into the luscious locally raised alpaca, sheep or mohair fleeces, fondle yarns and products produced from them, and learn how to incorporate more *local* fibers into *their* knitting, spinning, weaving, felting or crocheting projects at Fiber Feel Day, 2015, 9:00am to 2:00pm at the WNC Farmers Market, 570 Brevard Rd., Asheville. Easy access from I-26 Exit 33 or I-40 Exit 47. FREE ADMISSION.

Local Cloth Fiber Directory Sign-ups:

- At Fiber Days at the Folk Art Center – May 9 & 10 or online at <http://localcloth.org/resources/registration/index.html>

Textile Study Group (meets at Center for Craft, Creativity and Design, 67b Broadway, Asheville at 5:30pm).

May 20 – Junco Sato Pollack – Learning to be a Kudzu Farmer and Craftsman. To learn more about her work visit <http://juncosatopollack.com/>

June 18 – Rebecca Williams will give a talk about the Swannanoa and the Beacon Blanket Factory titled “Blanket Town: The Rise and Fall of an American Mill Town.”

Membership...

Marjorie Krueger

Please welcome the following new members to the Guild:

Kevin Cunningham, Hendersonville 828-489-6357

Susanne MacGuire, Asheville 334-202-1018

Talley Parker, Salem, SC 864-710-3079

Jeffrey Thornton, Hendersonville 828-301-3466

The membership roster, with more complete contact information, is posted on the website and updated regularly.



Share & Care...

Sheila Law

Congratulation Card to:

Marjorie Warren who was a US Congressional Honoree for her part in establishing National Tartan Day

Get Well Cards to:

Barbara Bigham

Faye Russell—for son's recovery

Thinking of You Card to:

Helene Stone because of flooding in her basement.

If you would like a card sent to someone please email me sheilawc@charter.net



Leclerc folding 4 harness table loom. Excellent for work shops. 15" weaving width, 3 reeds, 2 shuttles, loads of extra heddles. Barbara Haythorn, 828-859-2134, loomatic@windstream.net

Blue Ridge Fiber Show Update

Joan Berner

Thanks to those of you who provided suggestions on the clipboard for increasing participation. There were some good ideas there for our use. More in the future.

We have our judge! Susan Morgan Leveille from Dillsboro will judge our show. She is excited to participate and has a great deal of respect and affection for the Blue Ridge Fiber Show.

After the meeting someone asked me about the title of the show "Nature's Colors". Sometimes people see show themes as limiting, but generally I see them as a jumping off point to push creativity. In this case Nature's Colors can easily refer to natural dyes, but it goes way beyond that. If any of you follow Design Seeds, you know that they post many pictures from nature and then dissect the individual colors in the photo. It is amazing – there are so many colors that I don't see on first look. These are all nature's colors – some of them very vivid and different from natural dyes. I hope that everyone can see some inspiration in the theme chosen for this year.

We still need a volunteer to head up fund raising. I am working on trying to revise the budget to bring the costs closer to the money that we expect to see come in from entries. In the last few years we have made a number of purchases that are needed in the long term (i.e. props for hanging show). These purchases will help a lot to reduce costs.

Start thinking about your entry! It will be here before we know it!

Nearly new (October 2014) and barely used (3 small projects) 4-harness Schacht Baby Wolf 26" floor loom with 12-dent reed, 400 heddles. In Hendersonville near Historic Johnson Farm. Asking \$1100. Kit Cofer, 828-697-2464, coferkat@att.net.

Leclerc 4 harness 48" floor loom with bench and 2 reeds. \$950 OBO. Assorted small tools included. Betty Blackerby, 828-692-3040, bettyblackerby@yahoo.com

Western North Carolina Fiber/Handweavers Guild Meeting Minutes April 11, 2015

Meeting was called to order at 10:00 by V. P., Judi Jetson, at the Johnson Farm, Hendersonville, NC.

The minutes of the March meeting were approved as presented in the newsletter with Lynda Feldman making the motion and Teena Tuenge seconding.

The Treasurers report was approved as presented in the newsletter. Motion to approve was made by Ursula Powers and seconded by Gail Griffin.

Membership Committee, Jane Champion, reported that 43 members had signed in and that we had 5 guests present and that 4 of the guests had become members today.

Workshops: Lynda Feldman reported that there are still openings available for both of this year's workshops: Robyn Spady on Lace May 6th to 8th and Kathy Roig on warp painting July 30th & 31st.

Blue Ridge Fiber Show 2016: Chairman Joan Brenner reported that:

The theme of the show this year will be "Nature's Colors"

There will be a change in entry categories to "emerging fiber artists" and "proficient fiber artists"

Volunteers are needed to co-ordinate the following activities: Advertising, Fund raising, Ribbons, Participation.

Joan reminded us all that this is a non-juried show, so everyone can participate without being intimidated by the thought of being "judged".

Announcements:

In co-ordination with Robyn Spady's visit, the Guild will be organizing a group tour of the Biltmore Estate on May 5th to see the Downton Abbey exhibit. We will meet at the booking office at Biltmore. Plan on paying the normal entrance fee (looking at their Web site that could be as much as \$47.00) but we are trying to get a group discount and/or Senior's Tuesday and/or going with a member discount. A sign up sheet was passed at the meeting. If you are interested and did not sign up at the meeting, please contact Marjorie Warren. We hope to have lunch and wine tasting after the tour.

The Wool Room is sponsoring a Needle Felting workshop, May 16th. Pre-register at the shop.

The "Fiber Feel Good Day" will be June 6th at the Western North Carolina Farmers Market. Fiber producers, processors and makers are encouraged to participate. Come see and meet with fiber folks.

The Textile Society April meeting will be at 5:30 pm on the 15th at the Center for Craft Creativity, 67 Broadway, Asheville. This month's speaker will be Ellen Noble.

Heritage Handweavers's Spring Festival will be April 25th. All are encouraged to come see, play, demonstrate or help. Heritage's summer Kid's Camp for children 9 and older will begin in June.

AND a Special Announcement: Our own Marjorie Warren will be a US Congressional Honoree for her part in establishing Tartan Day, an official US national holiday honoring Scottish-Americans.

The business meeting was closed at 10:33 on motion by Mikkel Hansen with second by Walt Turpening.

Show and tell then followed.

The Speaker this month was Liz Spear, who did a presentation on her growth as a full time fiber artist.

Submitted by:

Pat Brown, Secretary

Photo Gallery...April Guild Meeting



Notice Marjorie is holding a "wee" dram of single malt Balvenie!...



...and Liz is holding one of her many gorgeous garments

Show and Tell....



How to fit a sock.....





Unlocking the Mystery of Lace Weaves

Instructor: Robyn Spady
3-day workshop, May 6-8, 2-15
The Folk Art Center

Cost:
\$110 per person, payable to WNCFHG
\$15 per person, Payable to instructor

This workshop will provide an in-depth introduction to loom-controlled lace weaves. Participants will weave only on their own pre-warped looms as they learn the distinctions between Atwater-Bronson, huck, and Swedish lace. The readings provided in advance, with both 4-shaft and 8-shaft options. Maximum of 20 students.

Robyn Spady earned the Handweavers Guild of America's Certificate of Excellence in weaving in 2004. She is an acclaimed teacher, blogger and author familiar to readers of Handwoven magazine and Shuttle, Spindle, and Dyepot. She writes that "for many of us, weaving is a type of circle of life. The loom my great-grandmother used to weave my baby blanket on over 45 years ago is in use on a daily basis, helping me transfer my inspirations into new fabrics and inspiring new generations of weavers." (www.spadystudios.com)

Prior to the workshop Robyn will send draft/sett options for students to follow in order to pre-warp their looms so they are ready for class. Those options are designed to help participants employ materials they already use. The \$15 fee payable to Robyn covers the cost of a workshop notebook.

APPLICATION: Unlocking the Mystery of Lace Weaves Workshop

To participate in this workshop please complete this form, sign, date and mail it **with your check for \$110.00 made payable to WNCFHG** to:

Lynda Feldman
208 Woodland Ct.
Black Mountain, NC 28711

Name _____ Phone _____

Email (please print) _____

I understand that if I cannot come to the workshop, I will lose the fee paid unless I find another member to take my place.

Signed _____ Date _____, 2015



WARP IT! PAINT IT! WEAVE IT!

Instructor: Kathie Roig
2-day workshop, July 30-31, 2015

Cost:
\$50 per person, payable WNCFHG
\$25 per person, payable instructor

This workshop returns to WNCFHG by popular demand. In **WARP IT! PAINT IT! WEAVE IT!** You'll explore different methods using fabric paints on your warp (and, perhaps, weft). This spontaneous method of applying color to yarn can be used in either functional or non-functional pieces. Images from nature will provide inspiration. You'll be encouraged to experiment with color, texture, and weave structure.

Experience level: You need to know how to dress your loom.
Time/Location: 9 am – 4 pm at The Folk Art Center, Asheville, NC
Max # of students: 15

Kathie Roig has been a weaver since 1980, when her husband gave her a table loom as a wedding present. She now weaves professionally on a Swedish draw loom, creating unique wall pieces that have been exhibited nation-wide, as well as functional items such as kitchen towels, hot mats, and baby bibs. Kathie currently maintains a weaving studio in her Asheville, NC home. She is a member of the Southern Highlands Craft Guild. Prior to the workshop Kathie will provide each participant with a warp and instructions for dressing the loom prior to the start of the workshop. She will also provide the paints. The \$25 fee payable to Kathie covers the cost of materials.

APPLICATION: WARP IT! PAINT IT! WEAVE IT!

To participate in this workshop please complete this form, sign, date and mail it **with your check for \$50.00 made payable to WNCFHG** to:

Lynda Feldman
208 Woodland Ct.
Black Mountain, NC 28711

Name _____ Phone _____

Email (please print) _____

Confirmation of enrollment will be sent via email. I understand that if I cannot come to the workshop, I will lose the fee paid unless I find another member to take my place.

Signed _____ Date _____, 2015



FIBER FEEL DAY

SATURDAY, JUNE 6, 2015

9 am - 2 pm

WNC Farmers Market

FREE ADMISSION!

570 Brevard Road/Highway 191, Asheville
Easy access from I-26 Exit 33 or I-40 Exit 47

Visit our On-line Fiber Resource Directory at

www.localcloth.org



SHOP...

- Find freshly shorn animal fleeces to spin yourself.
- Snap-up project-ready, locally raised and processed yarn.
- Take home finished fiber art from local artisans.



LEARN...

- Plunge your hands into luscious local alpaca, sheep or mohair fiber.
- Talk to farmers and mill owners about local fibers or blends for your knitting, weaving, felting or crochet project.
- Enjoy spinning, weaving, knitting & felting demos.



PUT MORE LOCAL IN YOUR FAVORITE FIBER CRAFT!