

Upper Trinity GCD

HZ - 1

Red River GCD

NTGR1 = 725 AFY

Glen Rose Formation Wells - TWDB Database

Geophysical Logs TWBD Bracs

NTXGCD

BGPZ Boundary

PWS Wells - TCEQ Database

ANTLERS

PALUXY

TRINITY

TWIN MOUNTAIN - TRAVIS PEAK

UNKNOWN

UPPER CRETACEOUS AGE AQUIFER

WOODBINE

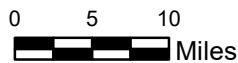
Glen Rose Formation

HZ - 3

HZ - 2

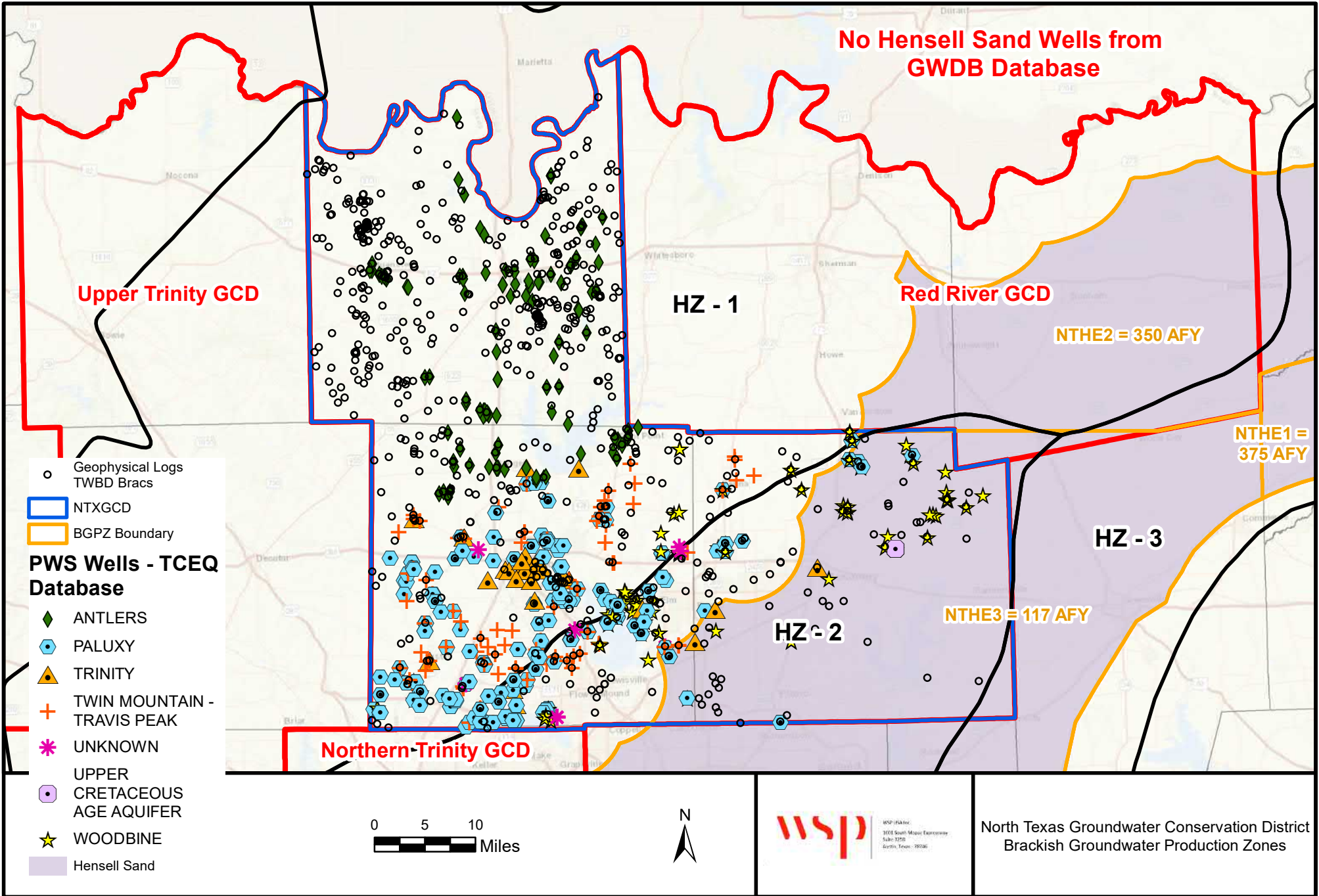
Northern-Trinity GCD

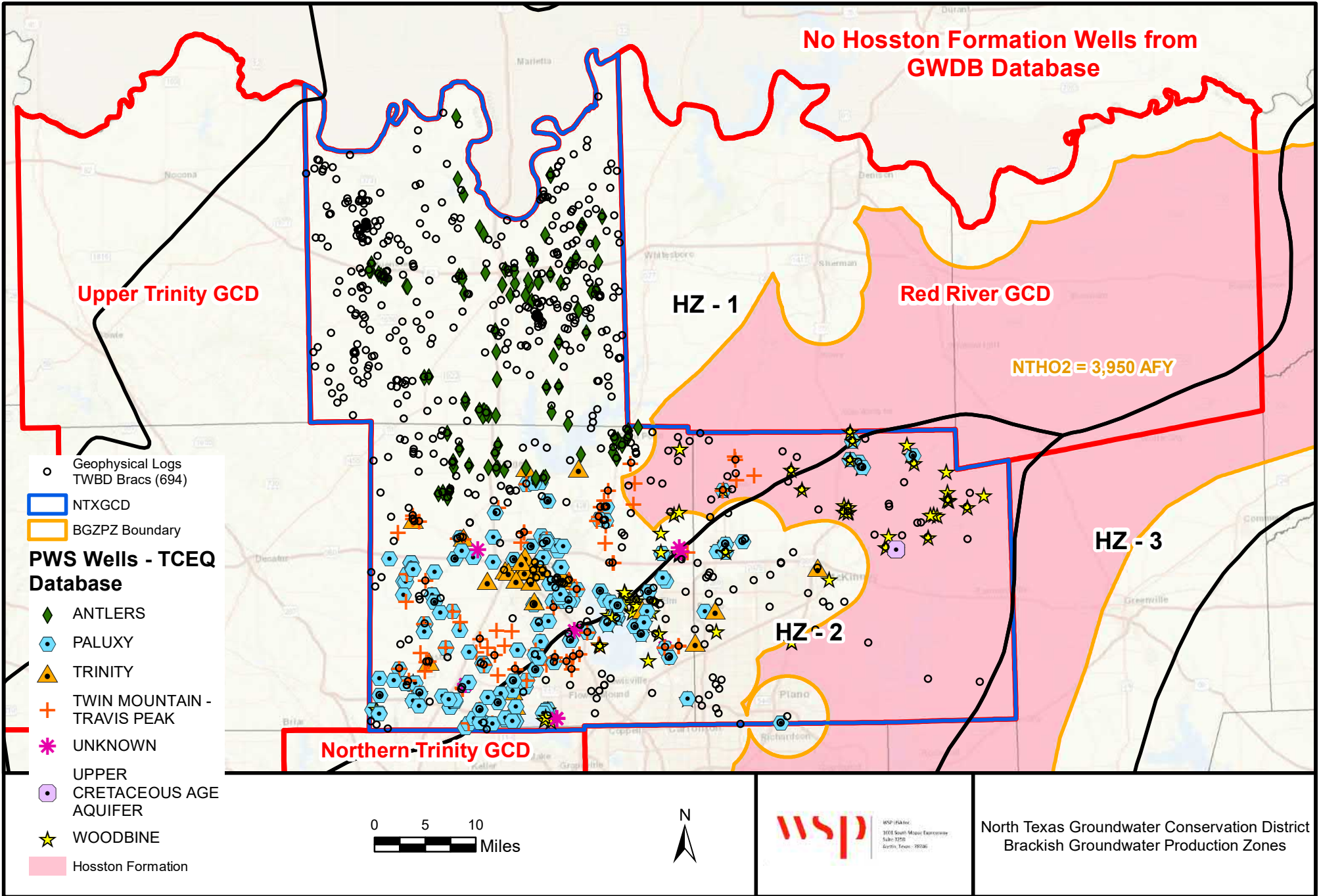
NTGR2 = 315 AFY



WSP (P&T)
1001 South Moses Epperson
Suite 320
Garland, Texas 75042

North Texas Groundwater Conservation District
Brackish Groundwater Production Zones





Upper Trinity GCD

HZ - 1

Red River GCD

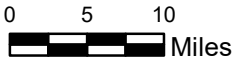
NTHO2 = 3,950 AFY

HZ - 3

HZ - 2

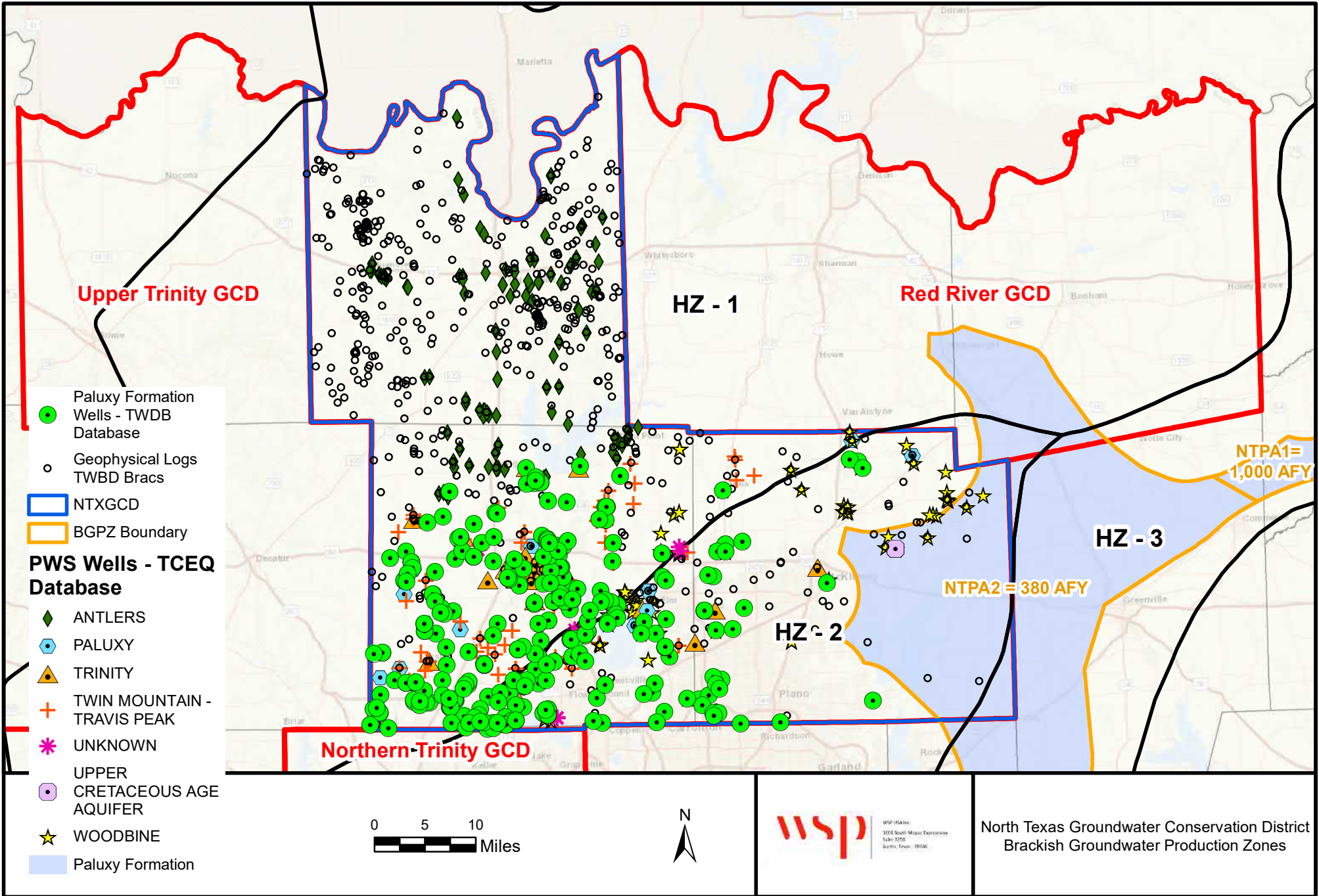
Northern-Trinity GCD

- Geophysical Logs TWBD Bracs (694)
- NTXGCD
- BGZPZ Boundary
- PWS Wells - TCEQ Database**
- ◆ ANTLERS
- ⬢ PALUXY
- ▲ TRINITY
- ⊕ TWIN MOUNTAIN - TRAVIS PEAK
- ✳ UNKNOWN
- UPPER CRETACEOUS AGE AQUIFER
- ★ WOODBINE
- Hosston Formation



WSP (R&E)
1001 South Moses Epperson
Suite 3250
Aurora, Texas 78206

North Texas Groundwater Conservation District
Brackish Groundwater Production Zones

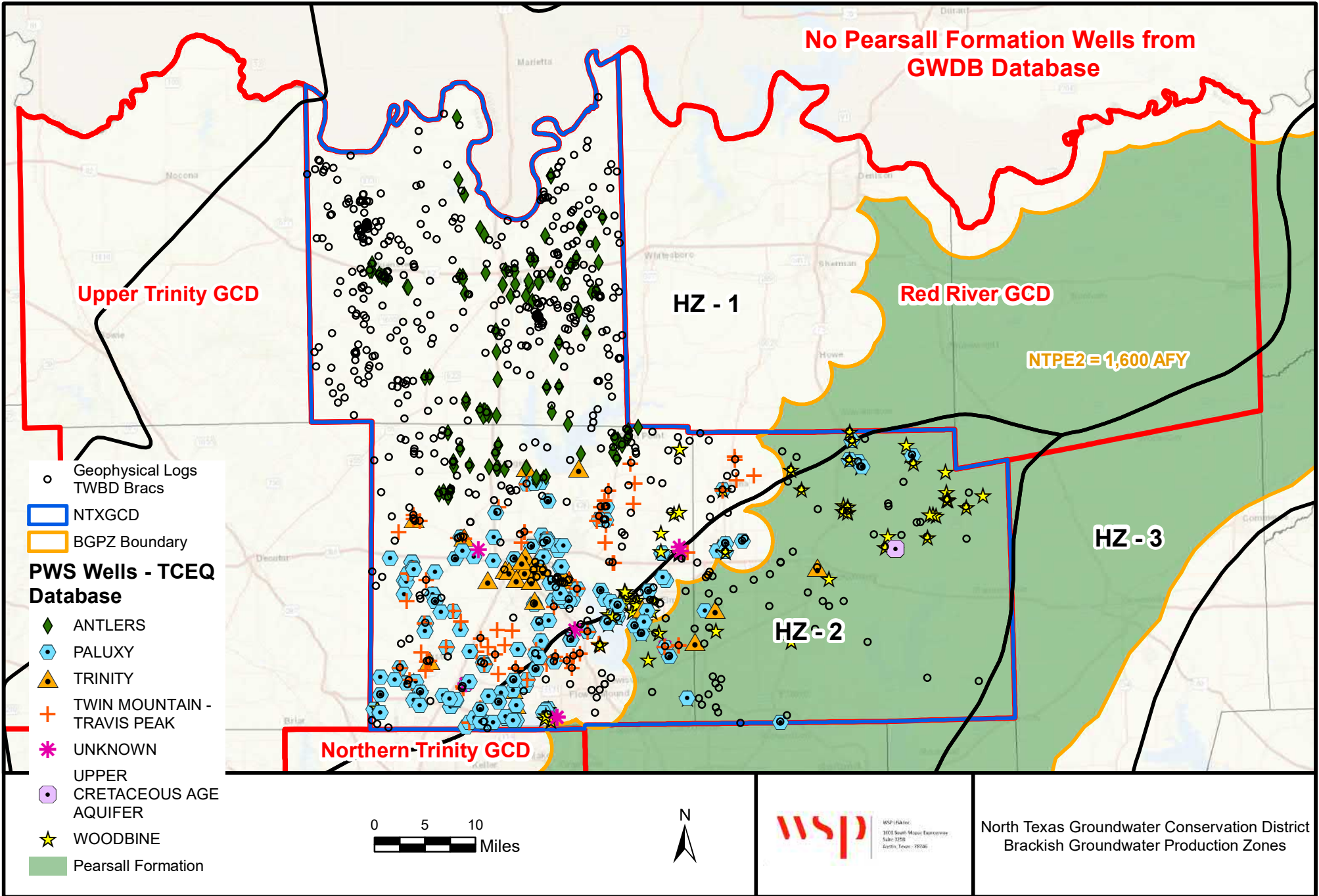


- Paluxy Formation Wells - TWBD Database
- Geophysical Logs TWBD Bracs
- NTXGCD
- BGPZ Boundary
- PWS Wells - TCEQ Database**
- ◆ ANTLERS
- PALUXY
- ▲ TRINITY
- ✚ TWIN MOUNTAIN - TRAVIS PEAK
- ✳ UNKNOWN
- UPPER CRETACEOUS AGE AQUIFER
- ★ WOODBINE
- Paluxy Formation

0 5 10 Miles



North Texas Groundwater Conservation District Brackish Groundwater Production Zones



No Pearsall Formation Wells from GWDB Database

Upper Trinity GCD

HZ - 1

Red River GCD

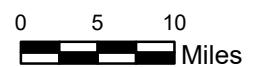
NTPE2 = 1,600 AFY

HZ - 3

HZ - 2

Northern Trinity GCD

- Geophysical Logs
TWBD Bracs
- ▭ NTXGCD
- ▭ BGPZ Boundary
- PWS Wells - TCEQ Database**
- ◆ ANTLERS
- ⬢ PALUXY
- ▲ TRINITY
- ⊕ TWIN MOUNTAIN - TRAVIS PEAK
- ✳ UNKNOWN
- UPPER CRETACEOUS AGE AQUIFER
- ★ WOODBINE
- Pearsall Formation



WSP (R&E)
1001 South Moses Epperson
Suite 3250
Aurora, Texas 78206

North Texas Groundwater Conservation District
Brackish Groundwater Production Zones