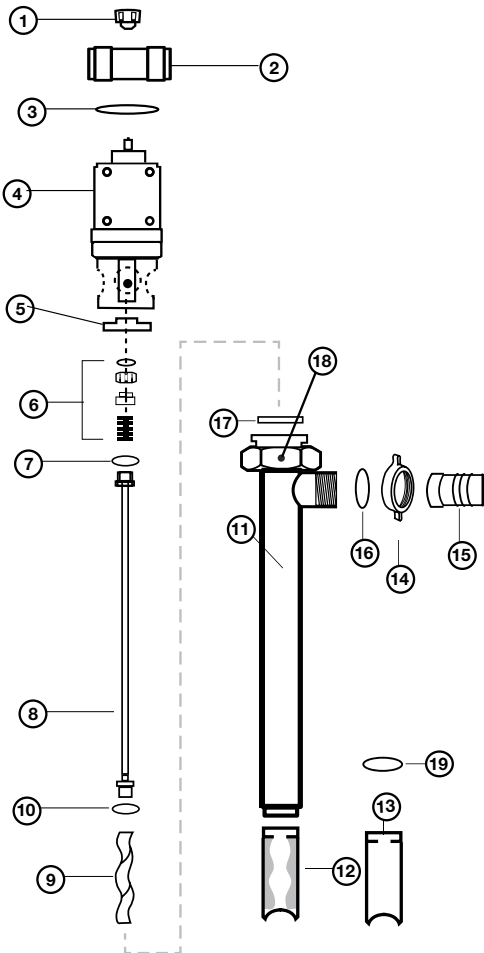


**Industrial Pump Model: SP-700SR**

**SP-700SR Spare Parts Lists**

**SP-700SR** See Figure 11



**Figure 11 – SP-700SR**

Ref #	Description	P/N for SP-700SR
1	Pump Coupling	1004
2	Connection Nut, SS316	8842
3	Snap Ring, SS316	8208
4	Gear Reduction Unit, SS316	779
5	Mechanical Seal Bushing, SS316	702
6	Mechanical Seal, SIC	703
7	Gasket, PTFE	735
8	Drive Shaft, SS316	
	SP-751-27, SP-752-27, SP-1851-27	704
	SP-1851-39	705
	SP-751-39, SP-752-39, SP-1851-47	706
	SP-751-47, SP-752-47	707
9	Rotor, SS316	
	Size 751	708
	Size 752	709
	Size 1851	710
10	Gasket, PTFE	731
11	Outer Tube Assembly, SS316	
	SP-751-27, SP-752-27, SP-1851-27	800
	SP-1851-39	801
	SP-751-39, SP-752-39, SP-1851-47	802
	SP-751-47, SP-752-47	803
12	Stator	
	Buna* (SS316 Tube)	
	Size 751	713
	Size 752	714
	Size 1851	715
	Viton** (SS316 Tube)	
	Size 751	719
	Size 752	720
	Size 1851	721
	PTFE (Stator Insert Only)	
	Size 751	722
	Size 752	723
	Size 1851	724
13	Stator Tube, ** SS316	
	Size 751	774
	Size 752	775
	Size 1851	776
14	Wing Nut, SS316	727
15	Hose Barb, SS316	
	1.25" (32 mm)	728
	1.5" (38 mm)	729
16	O-Ring,	
	PTFE	730
	Viton®	730V
	Buna	730B
17	Gasket,	
	Buna	737
	PTFE	738
	Viton®	739
18	Set Screw, SS316	757
19	Ring, SS316 (For Use with Teflon Stator Only)	0016

\*Includes Stator & Stator Tube. \*\* Does not include Stator..