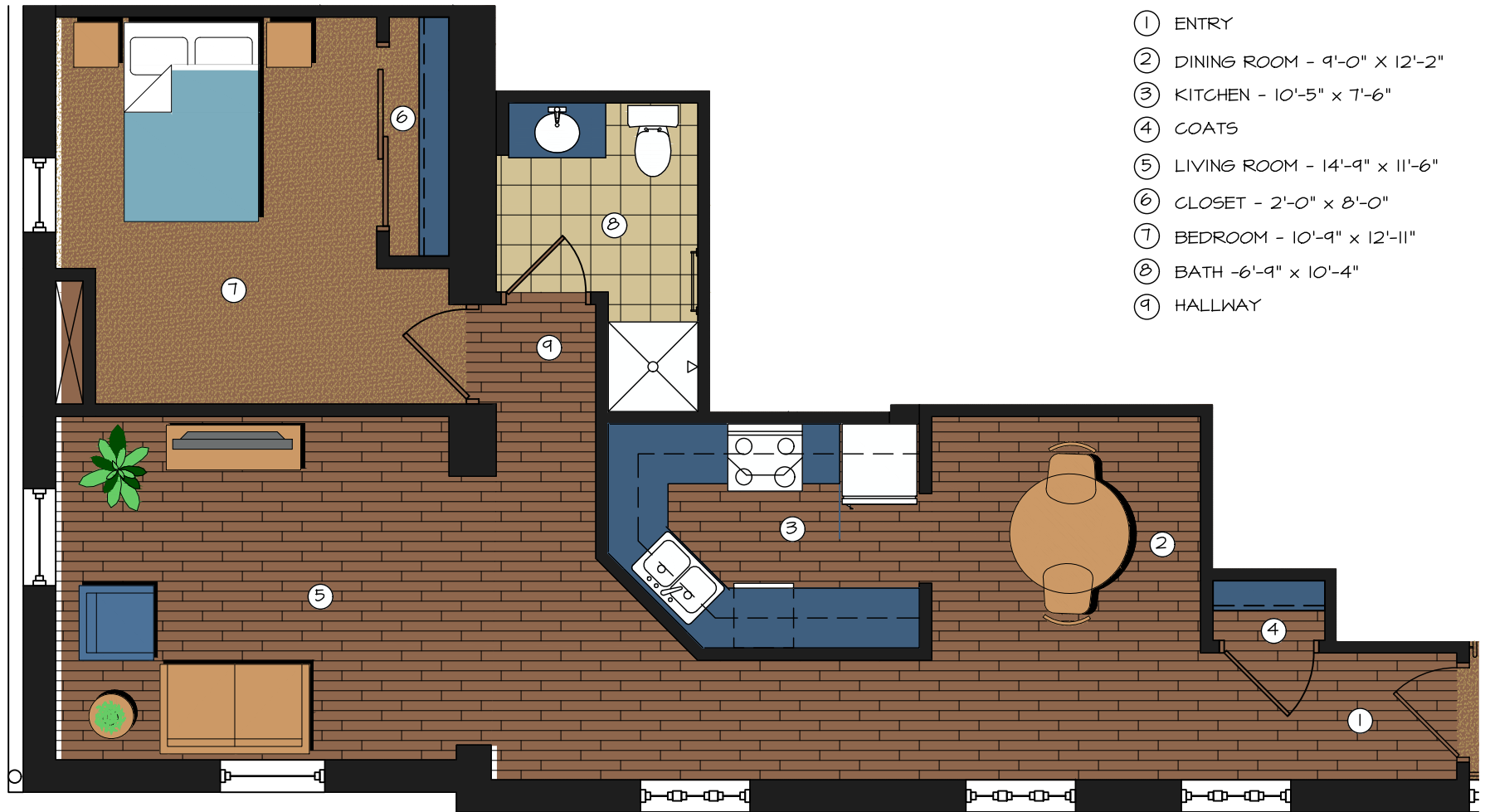


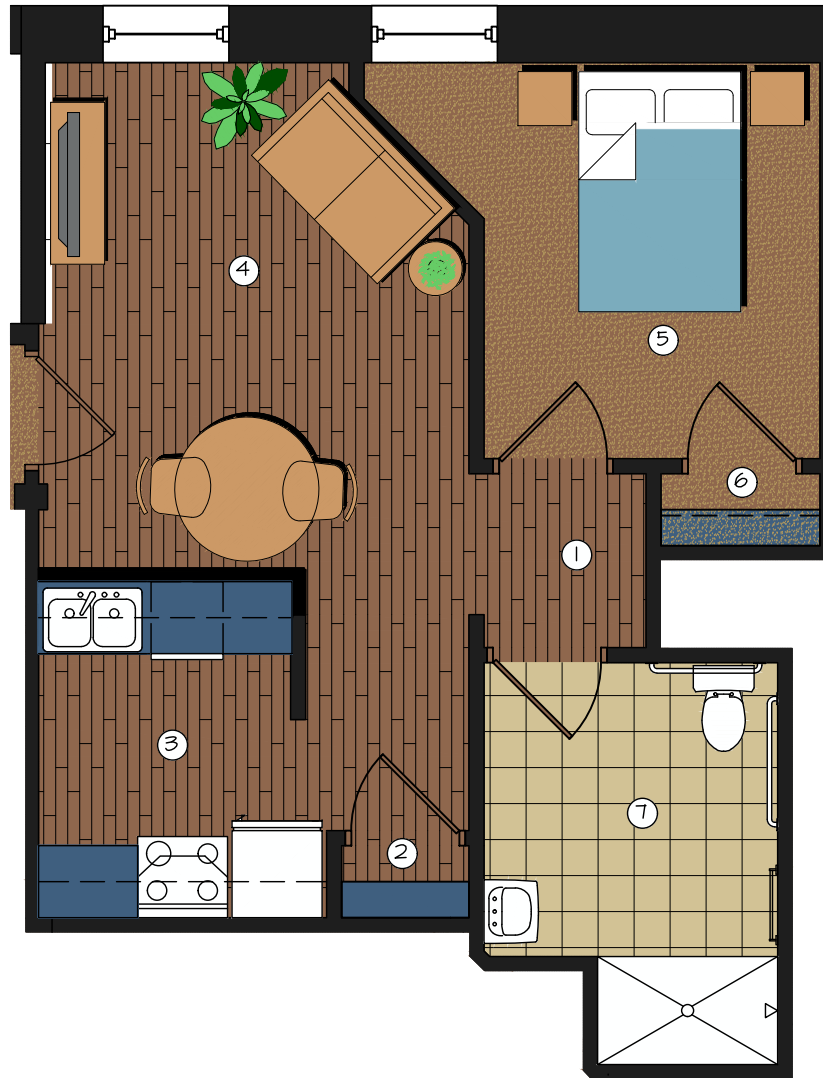
- ① LIVING ROOM - 11'-7" x 17'-2"
- ② COATS
- ③ KITCHEN - 11'-0" x 12'-6"
- ④ CLOSET - 2'-0" x 9'-0"
- ⑤ BEDROOM 2 - 10'-0" x 11'-9"
- ⑥ BEDROOM - 13'-2" x 10'-7"
- ⑦ CLOSET - 8'-9" x 2'-0"
- ⑧ HALLWAY
- ⑨ BATH - 6'-0" x 10'-4"

Will Rogers Lofts
 Claremore, Oklahoma
 Unit 604
 2-BR Unit - 813 sf



- ① ENTRY
- ② DINING ROOM - 9'-0" x 12'-2"
- ③ KITCHEN - 10'-5" x 7'-6"
- ④ COATS
- ⑤ LIVING ROOM - 14'-9" x 11'-6"
- ⑥ CLOSET - 2'-0" x 8'-0"
- ⑦ BEDROOM - 10'-9" x 12'-11"
- ⑧ BATH - 6'-9" x 10'-4"
- ⑨ HALLWAY

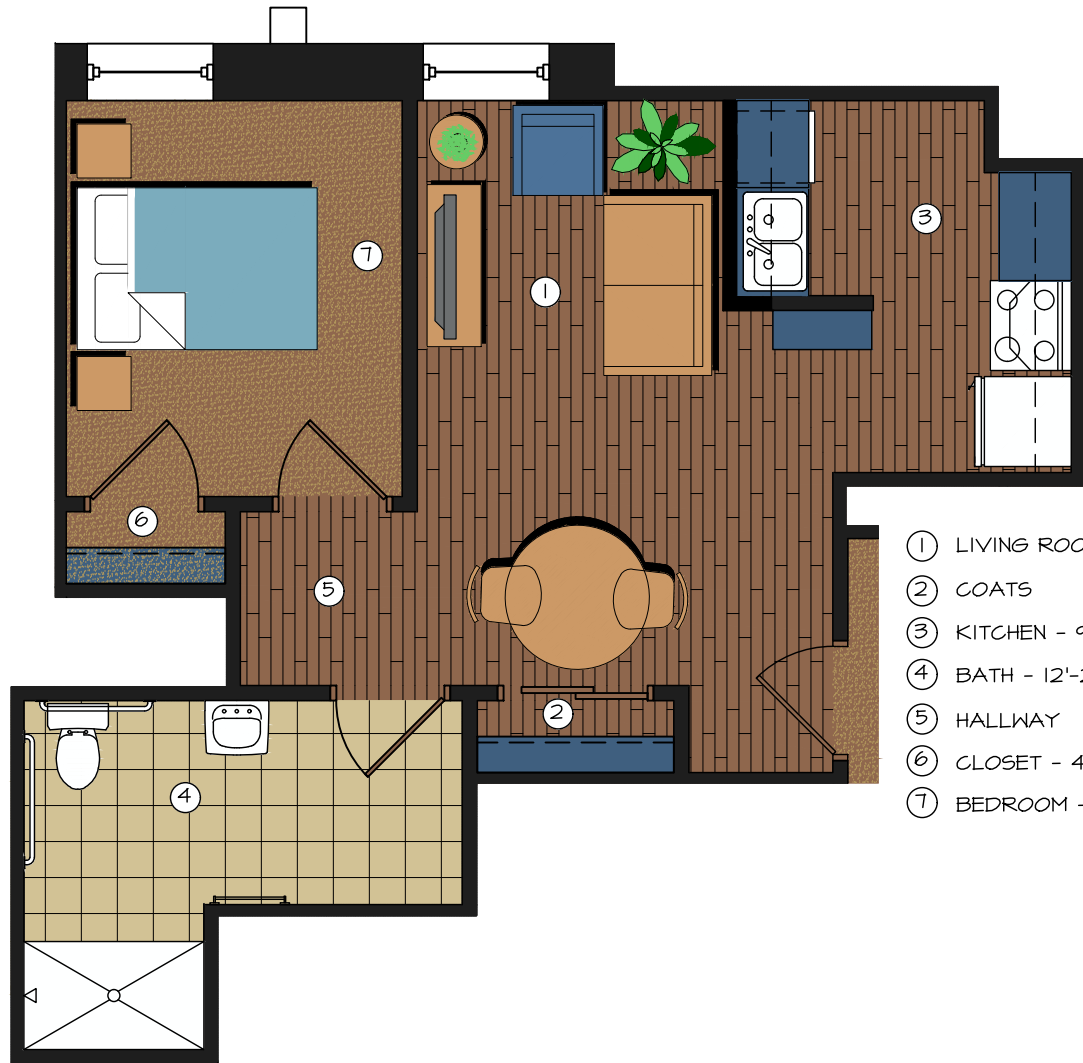
Will Rogers Lofts
 Claremore, Oklahoma
 Unit 608
 1-BR Unit - 940 sf



- ① HALLWAY
- ② COATS
- ③ KITCHEN - 12'-11" x 10'-9"
- ④ LIVING ROOM - 14'-4" x 12'-1"
- ⑤ BEDROOM - 11'-0" x 11'-11"
- ⑥ CLOSET - 2'-0" x 7'-1"
- ⑦ BATH - 9'-0" x 5'-10"

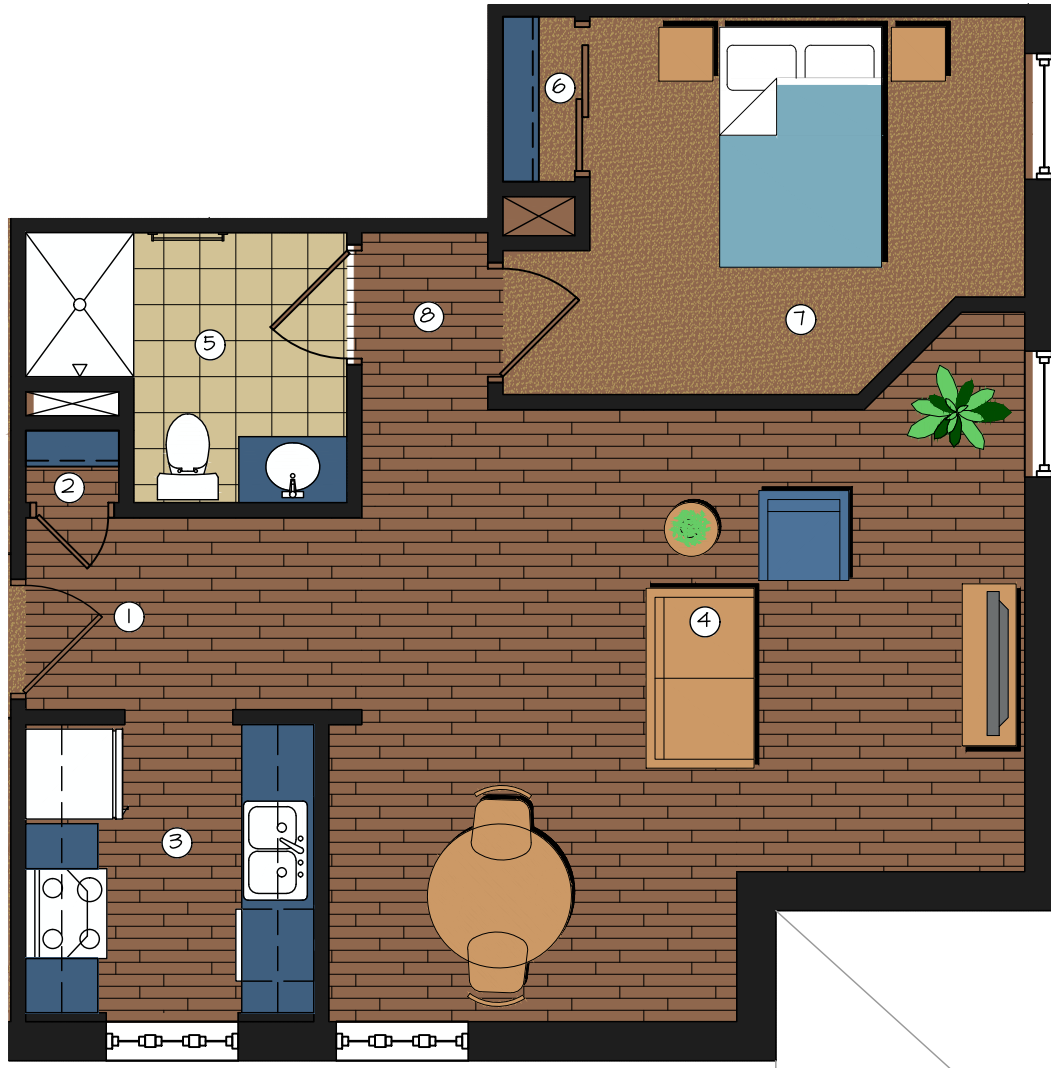
NOTE: DIMENSIONS MAY VARY FROM UNIT TO UNIT

Will Rogers Lofts
 Claremore, Oklahoma
 Unit 610
 1-BR Unit - 596 sf



- ① LIVING ROOM - 8'-6" x 16'-3"
- ② COATS
- ③ KITCHEN - 9'-3" x 10'-4"
- ④ BATH - 12'-2" x 9'-8"
- ⑤ HALLWAY
- ⑥ CLOSET - 4'-5" x 2'-0"
- ⑦ BEDROOM - 9'-4" x 11'-0"

Will Rogers Lofts
 Claremore, Oklahoma
 Unit 611
 1-BR Units - 596 sf



- ① ENTRY
- ② COATS
- ③ KITCHEN - 8'-0" x 8'-0"
- ④ LIVING ROOM - 18'-5" x 12'-10"
- ⑤ BATH - 8'-11" x 7'-6"
- ⑥ CLOSET - 2'-0" x 4'-7"
- ⑦ BEDROOM - 12'-1" x 10'-6"
- ⑧ HALLWAY

Will Rogers Lofts
 Claremore, Oklahoma
 Unit 612
 1-BR Units - 744 sf



- ① LIVING ROOM - 11'-7" x 14'-1"
- ② COATS
- ③ KITCHEN - 7'-11" x 8'-5"
- ④ BATH - 8'-6" x 6'-0"
- ⑤ CLOSET - 2'-0" x 8'-6"
- ⑥ BEDROOM - 12'-8" x 8'-6"
- ⑦ HALLWAY

Will Rogers Lofts
 Claremore, Oklahoma
 Unit 613
 1-BR Units - 510 sf



- ① ENTRY
- ② KITCHEN - 8'-3" x 7'-6"
- ③ COATS
- ④ LIVING ROOM - 14'-6" x 10'-10"
- ⑤ BEDROOM - 10'-3" x 12'-6"
- ⑥ CLOSET - 2'-0" x 8'-6"
- ⑦ BATH - 8'-2" x 6'-8"
- ⑧ HALLWAY

Will Rogers Lofts
 Claremore, Oklahoma
 Unit 614
 1-BR Units - 597 sf