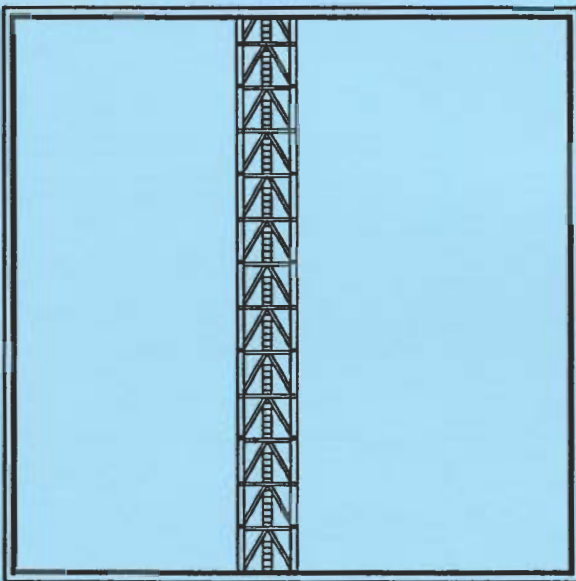


M220D CONSTRUCTION TOWER CRANE



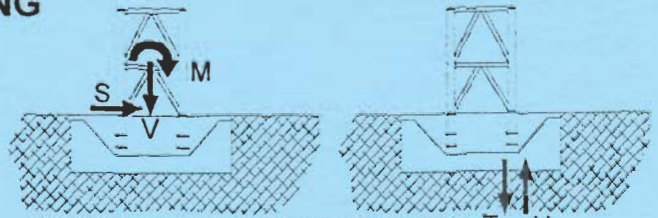
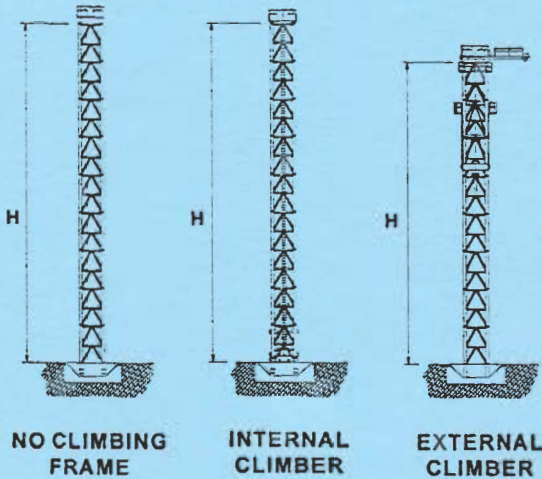
Technical Data Sheet

**FAVELLE
FAVCO**



A subsidiary of Muhibbah Engineering (M) BHD

CRANE ON BASE - FREE STANDING



MAXIMUM VALUES T U AT ONE CORNER

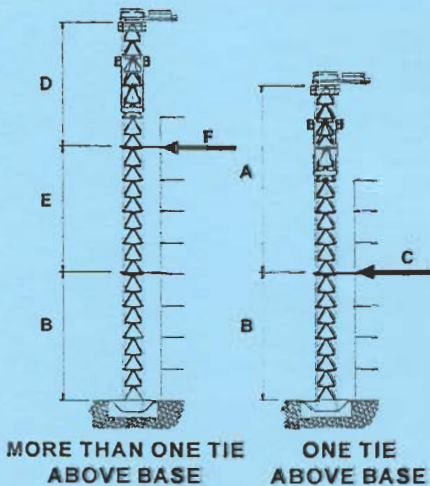
FREESTANDING TOWER HEIGHTS AND FOUNDATION REACTIONS

TOWER	NO CLIMBING FRAME			INTERNAL CLIMBING FRAME			EXTERNAL CLIMBING FRAME			UNITS
	221	1000	391	221	1000	391	221	1000	391	
H	40	30	44	40	30	44	32	24	40	(m)
M	839	629	973	839	629	973	792	607	1040	(mT)
V	106	95	114	121	110	129	114	105	125	(T)
S	22	19	26	22	19	26	25	22	29	(T)
T	373	209	353	377	212	357	355	204	378	(T)
U	329	171	306	326	167	302	307	161	325	(T)

In-service wind speeds up to 20 m/s & out-of-service wind speeds up to 42 m/s.

Alternatives available upon request.

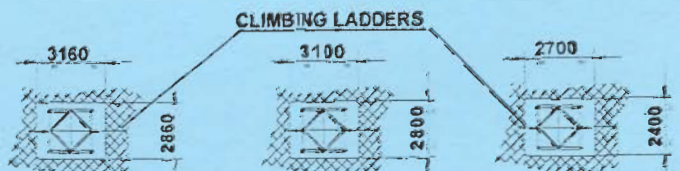
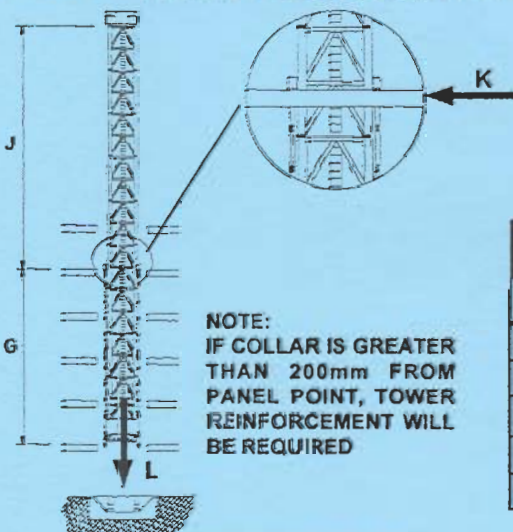
EXTERNAL CLIMBING



EXTERNAL CLIMBING

TOWER TYPES:		221	1000	391	UNITS
ONE TIE ABOVE BASE					
A	MAX. HEIGHT ABOVE FIRST TIE	32	24	40	(m)
B	MIN HEIGHT TO FIRST TIE	20	12	24	(m)
C	MAX. HORIZONTAL TIE LOAD	85	98	95	(T)
MORE THAN ONE TIE BASE					
D	MAX. HEIGHT ABOVE TOP TIE	32	24	40	(m)
E	MIN. HEIGHT BETWEEN TOP TIES	20	9	20	(m)
F	MAX. HORIZONTAL TIE LOAD	75	108	96	(T)

INTERNAL LADDER CLIMBING



TYPE 1000 CLIMBING DETAILS TYPE 391 CLIMBING DETAILS TYPE 221 CLIMBING DETAILS

INTERNAL LADDER CLIMBING

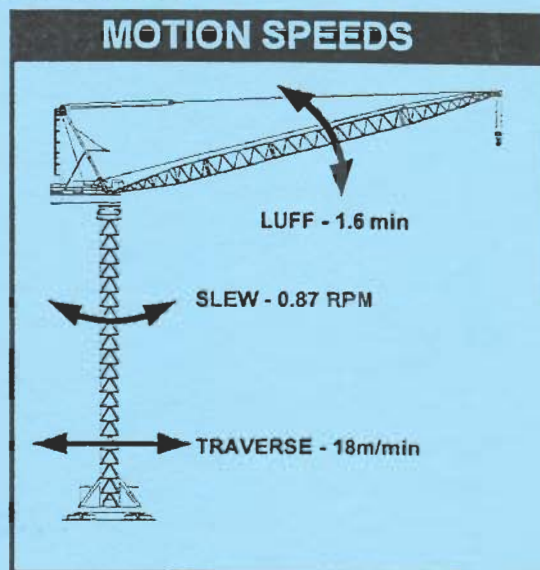
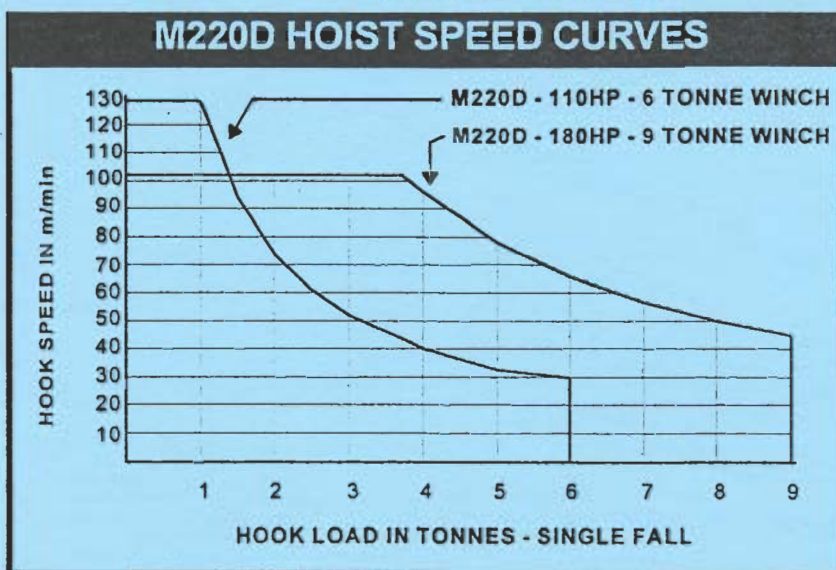
TOWER TYPES		221	1000	391	UNITS
G	MIN. DISTANCE BETWEEN COLLARS	12	9	12	(m)
J	MAX. DISTANCE ABOVE TOP TIE	28	21	32	(m)
K	MAXIMUM HORIZONTAL LOAD	67	68	78	(T)
L	TOTAL VERTICAL LOAD	121	110	129	(T)
H	MAX. FREESTANDING HEIGHT	40	30	44	(m)

RADIUS & CAPACITY

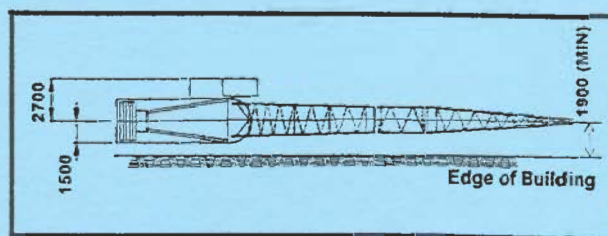
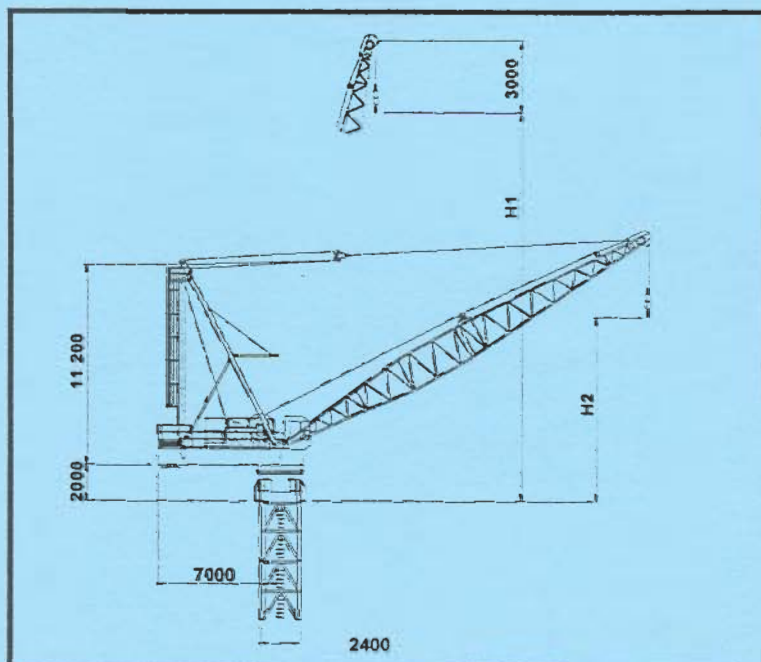
BOOM LENGTH (m)	MINIMUM RADIUS (m)	MAX RADIUS FOR 18T	RADIUS (METRES) & CAPACITY (TONNES) (18 TONNE & 9 TONNE WINCHES & 2-FALL HOOK)																			
			5.0 (m)	7.5 (m)	10.0 (m)	12.5 (m)	15.0 (m)	17.5 (m)	20.0 (m)	22.5 (m)	25.0 (m)	27.5 (m)	30.0 (m)	32.5 (m)	35.0 (m)	37.5 (m)	40.0 (m)	42.5 (m)	45.0 (m)	47.5 (m)	50.0 (m)	52.5 (m)
55.0	4.7	-	14.3	14.3	14.3	14.3	14.3	14.3	14.3	12.2	10.6	9.4	8.2	7.2	6.4	5.7	5.1	4.6	4.1	3.7	3.3	3.0
50.4	4.2	16.5	18.0	18.0	18.0	18.0	18.0	17.0	14.5	12.6	10.9	9.5	8.4	7.5	6.7	6.0	5.4	4.9	4.4	4.0		
45.8	3.9	17.0	18.0	18.0	18.0	18.0	18.0	17.5	14.8	12.8	11.1	9.8	8.7	7.8	7.0	6.3	5.7	5.1				
41.2	3.7	17.2	18.0	18.0	18.0	18.0	18.0	17.6	15.1	13.0	11.4	10.1	8.9	8.0	7.2	6.5	5.9					
36.6	3.3	17.5	18.0	18.0	18.0	18.0	18.0	18.0	15.4	13.3	11.7	10.4	9.3	8.3	7.5							
32.0	3.0	17.7	18.0	18.0	18.0	18.0	18.0	18.0	15.6	13.6	12.0	10.6	9.5									
27.4	2.7	17.7	18.0	18.0	18.0	18.0	18.0	18.0	15.6	13.6	12.0											

SPEEDS

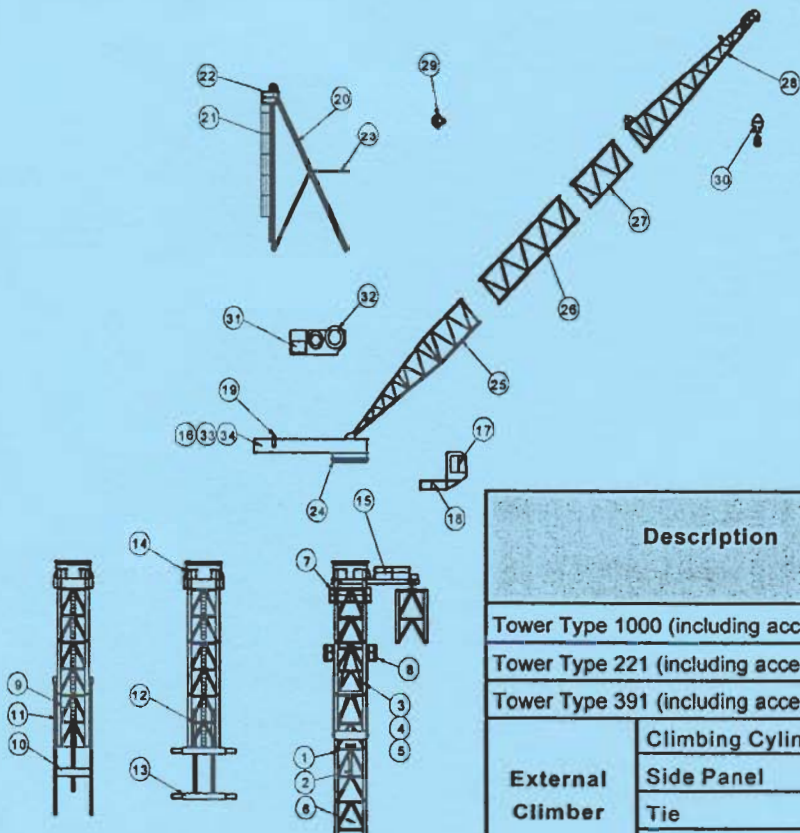
(Alternative Speed Configurations Available on Request)



DIMENSIONS



MAXIMUM RADIUS (m)	BOOM LENGTH (m)	HOOK HEIGHT	
		H1 (m)	H2 (m)
52.5	55.0	55.4	18.0
47.5	50.4	50.8	18.4
42.5	45.8	46.2	18.5
40.0	41.2	41.6	11.9
35.0	36.6	37.0	12.5
30.0	32.0	32.4	12.7
25.0	27.4	27.8	12.7



INTERNAL CLIMBING (LADDER) INTERNAL CLIMBING (3-BEAM) EXTERNAL CLIMBING



FAVELLE FAVCO CRANES (M) SDN BHD

Lot 9895, 4th Mile, Jalan Kg. Jawa
41000 Klang,
Selangor Darul Ehsan
Malaysia
Tel: 603 333 7835, 603 333 7836
Fax: 603 333 7842

FAVELLE FAVCO CRANES PTE LTD

No. 6 Sungei Kadut Loop
Singapore 729 453
Tel: 65 366 3508
Fax: 65 366 3503

FAVELLE FAVCO CRANES PTY LTD

28 Yarrunga Street Prestons
NSW 2170 Australia
P.O. Box 456 Liverpool BC
NSW 1871 Australia
Telephone: 61 2 9607 0055, 61 2 9608 2000
Fax: 61 2 9607 0022, 61 2 9607 2728
E - MAIL : favcosyd@enternet.com.au

Description		Pos	Qty	L Length (m)	W Width (m)	H Height (m)	Weight per Item (kg)
Tower Type 1000 (including access ladders)		1	-	3.054	2.464	2.464	2400
Tower Type 221 (including access ladders)		1	-	4.000	2.004	1.997	3930
Tower Type 391 (including access ladders)		1	-	4.000	2.404	2.397	4070
External Climber	Climbing Cylinder	2	2	5.085	0.292	0.292	1400
	Side Panel	3	2	11.520	0.320	2.424	9200
	Tie	4	2	4.200	0.300	2.760	475
	Tie	5	1	4.270	0.110	2.580	430
	Climbing Support	6	2	2.290	1.350	0.337	215
	Top Access Platform	7	2	3.250	1.060	1.235	210
	Bottom Access Platform	8	2	3.250	1.053	1.235	195
Internal Ladder Climber	Bottom Climbing Tower (inc Cylinders)	9	1	4.000	2.411	2.400	13250
	Climbing Foot	10	1	2.400	0.350	0.710	1025
	Climbing Ladder	11	7	0.260	0.180	7.985	685
3 - Beam Climber	Bottom Climbing Tower	12	1	4.000	2.411	2.400	5000
	Climbing Beams	13	1	2.700	0.802	0.450	1300
Slew Mount		14	1	3.100	2.876	1.673	4330
Monorail Beam & Trolley		15	1	6.820	0.660	1.300	1451
Machinery Deck		16	1	8.352	2.384	1.250	6500
Cabin		17	1	1.700	1.200	2.100	1200
Cabin Support		18	1	3.000	1.573	1.260	390
Counter-weights (Steel)		19	5	1.800	1.724	0.160	4000
Mast & Sheaves		20	1	11.000	2.500	0.650	3750
Mast Ladder		21	1	10.300	0.812	0.935	275
Mast Platform		22	1	1.480	1.640	1.100	175
Boom Buffer		23	1	3.142	0.215	2.140	190
Slew Ring		24	1	2.235	2.235	0.142	851
Bottom Jib Section		25	1	9.100	1.900	1.900	1100
Jib Extension Section		26	1	9.200	1.900	1.900	1100
Jib Extension Section		27	1	4.600	1.900	1.900	525
Top Jib Section		28	1	9.100	1.900	1.900	1290
Bridle		29	1	0.820	0.640	0.790	560
2 - Fall Hook		30	1	1.020	0.360	1.800	577
Powerpack Winches		31	1	3.800	1.750	2.200	5000
Hoist Rope		32	1	300.000	-	-	700
Split Deck - Front		33	1	3.450	2.384	1.250	4215
Split Deck - Back		34	1	4.902	2.384	0.900	3045

Distributed By: