

# FREE STANDING BUILDING

5120 Antoine Dr @ Pinemont Dr, Houston, TX 77092



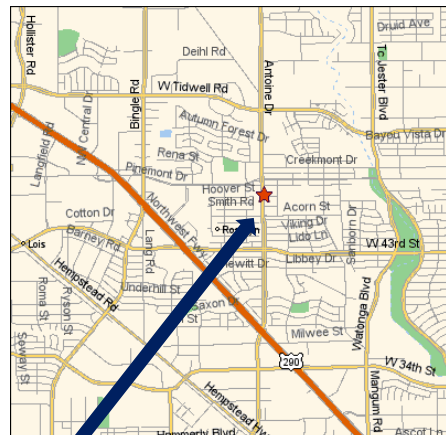
3,250 SF w/ Pole Sign and Drive-Thru Lanes

## TENANT USE:

- Retail
- Professional
- Medical

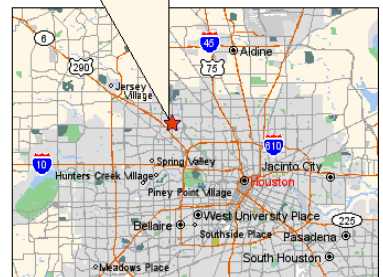
## SITE FEATURES:

- Located in Near Northwest Management District  
[www.nnmd.org](http://www.nnmd.org)
- Next to CVS at the SE Corner of the Lighted Intersection of Antoine Dr & Pinemont Dr
- Existing Standalone Pole Sign Available
- 2 Existing Drive-Thru Lanes (room for additional lanes)
- Ample Parking Available



**FOOD TOWN**

**CVS/pharmacy**



# ANTOINE PLAZA

5120 Antoine Dr @ Pinemont Dr, Houston, TX 77092

## DEMOGRAPHICS

### Total Population

- ~ 1-mile: 17,630
- ~ 3-mile: 126,904
- ~ 5-mile: 321,982

### Median Age

- ~ 1-mile: 32 yrs.
- ~ 3-mile: 20 yrs.
- ~ 5-mile: 31 yrs.

### Per Capita Income

- ~ 1-mile: \$20,659
- ~ 3-mile: \$20,110
- ~ 5-mile: \$24,355

### Total Households

- ~ 1-mile: 6,928
- ~ 3-mile: 45,535
- ~ 5-mile: 113,408

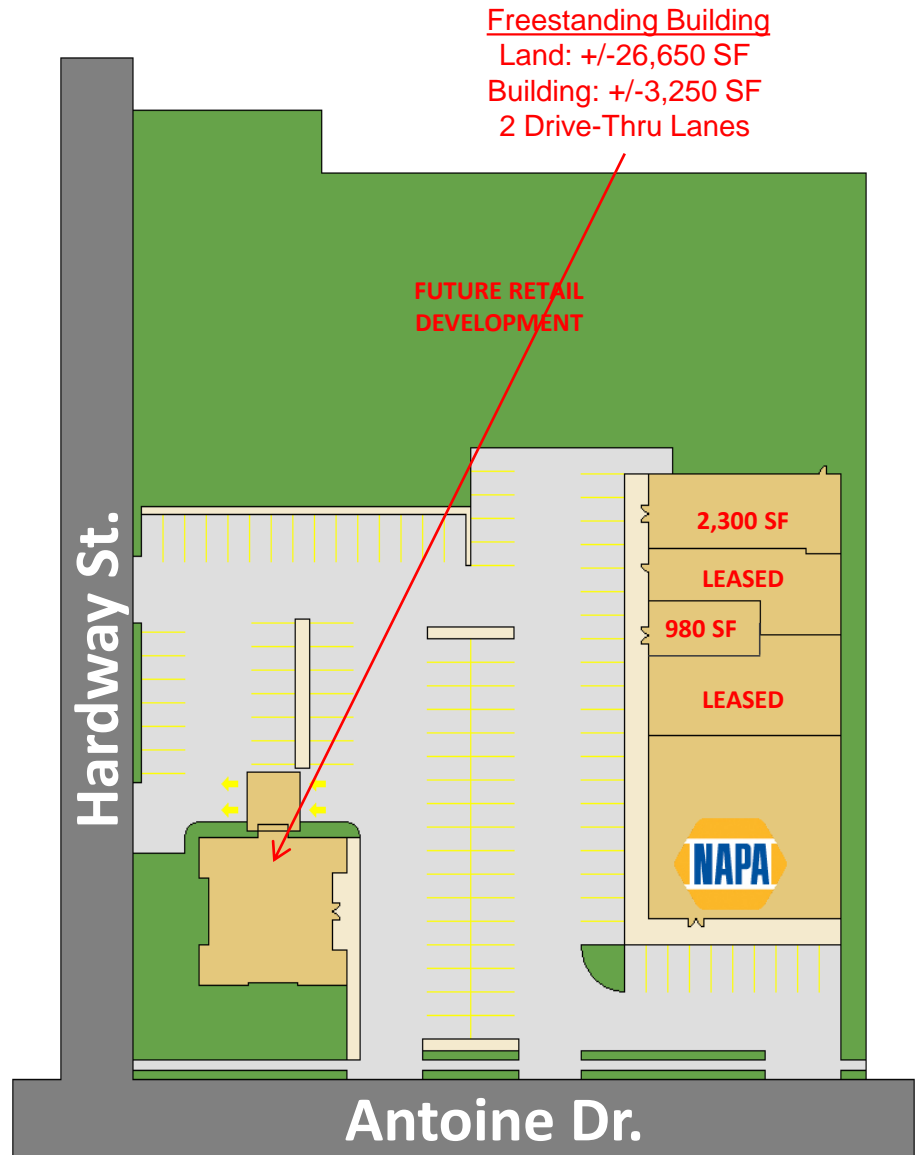
### Median Household Income

- ~ 1-mile: \$35,659
- ~ 3-mile: \$36,606
- ~ 5-mile: \$41,651

## TRAFFIC COUNTS

[24 Hour Counts]

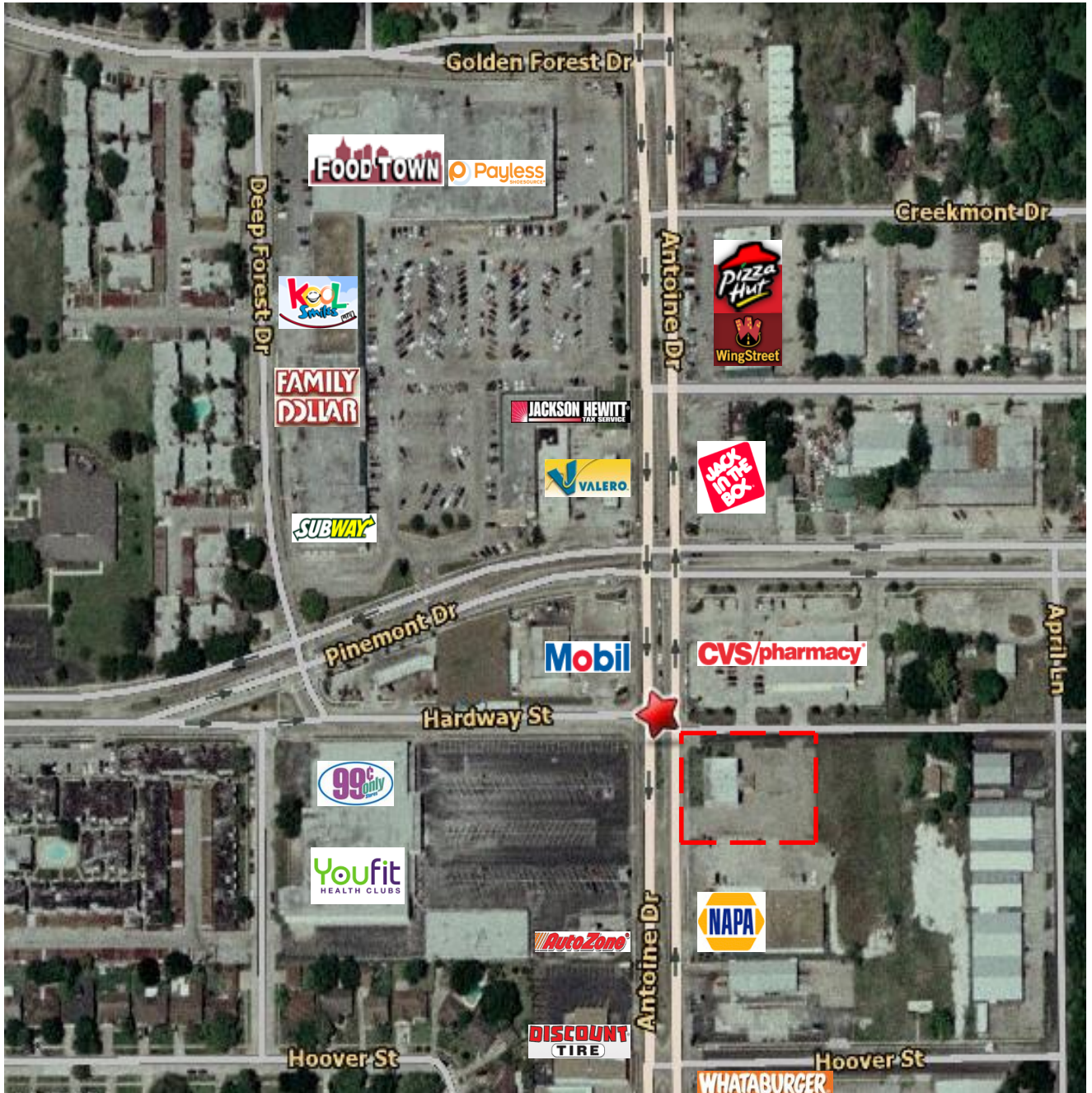
- ~ Antoine Dr. 33,922 cars
- ~ Pinemont Dr. 18,510 cars



The information contained herein has been obtained from sources that we deem reliable. We have no reason to doubt its accuracy; however, no warranty or guarantee either expressed or implied is made with respect to the accuracy hereof. All such information is submitted subject to error or omissions prior to sale, lease or withdrawal without notice. All information contained herein should be verified to the satisfaction of the person relying thereon.

# ANTOINE PLAZA

5120 Antoine Dr @ Pinemont Dr, Houston, TX 77092



# ANTOINE PLAZA

5120 Antoine Dr @ Pinemont Dr, Houston, TX 77092

