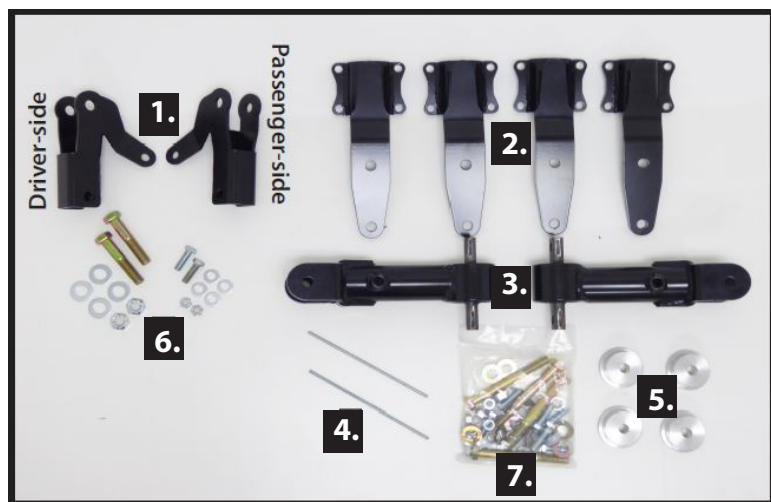


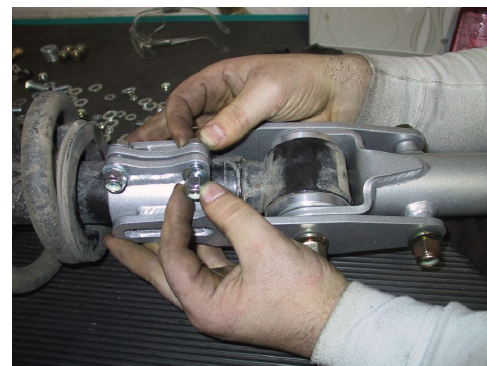
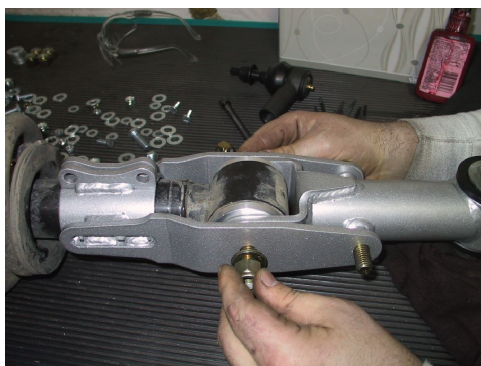


#50789

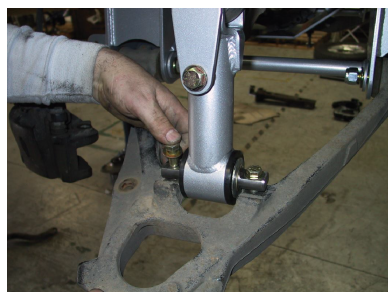
Magnetic Ride Adaptor 2007-18 GM 1/2-Ton, 2wd/4wd



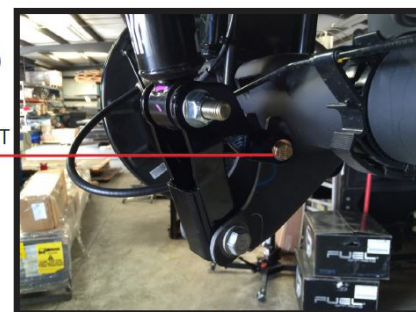
1. Rear Shock Extenders
2. Upper Clam Shell Strut Extenders
3. Lower Strut Extenders
4. Ride Height Sensor Extensions
5. Strut Bushing Spacers
6. Rear Shock Hardware
7. Front Strut Hardware



1. On the factory coil-overs you will need to take out the factory clip on the nut from the factory cross-shafts. Press out the cross-shaft and bottom coil-over bushing.
2. Using the provided strut bushing spacers (part# 5), push them into the bottom of the factory shocks.
3. Install the provided Upper Clam shell Strut Extenders (part# 2) around the bottom of the factory shock so that it is lined up with the strut bushing extenders (part# 3). Use the provided 1/2" x 4" bolts to bolt the strut bushing extender to the shock mount. (Don't tighten yet!) The 5/16" x 1 1/2" bolts are to bolt to the shock brackets. Make sure when tightening down the shock brackets stay equally spaced on the shock. Now tighten and torque the 1/2" bolts to 75 ft. lbs. and the 5/16" to 20 ft. lb.
4. Using the factory hardware, re-install the front stock shocks. But do not tighten yet!

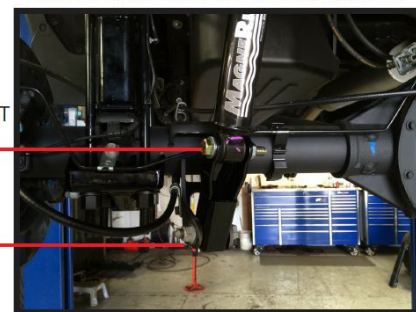


(3/8-24 x 1-1/4)
H.H.C.S BOLT
2- WASHERS
1-TOPLOCK NUT



Driver-side bracket shown above

(9/16-18 x 3)
H.H.C.S BOLT
2- WASHERS
1-TOPLOCK NUT



FACTORY
BOLT

5. Re-attach the lower strut extenders into the factory position on the lower a-arm. Now tighten everything on the front.
6. Install rear shock extenders (part #1) to the factory rear axle mounts. You will re-use the factory lower hardware and provided upper hardware.