

Shasta Dam to mile ~10.5 (Rock Creek Road Parking)

Approximate 20 minute drive time

Leave race start –proceed to intersection of Shasta Dam Blvd./Lake Blvd.

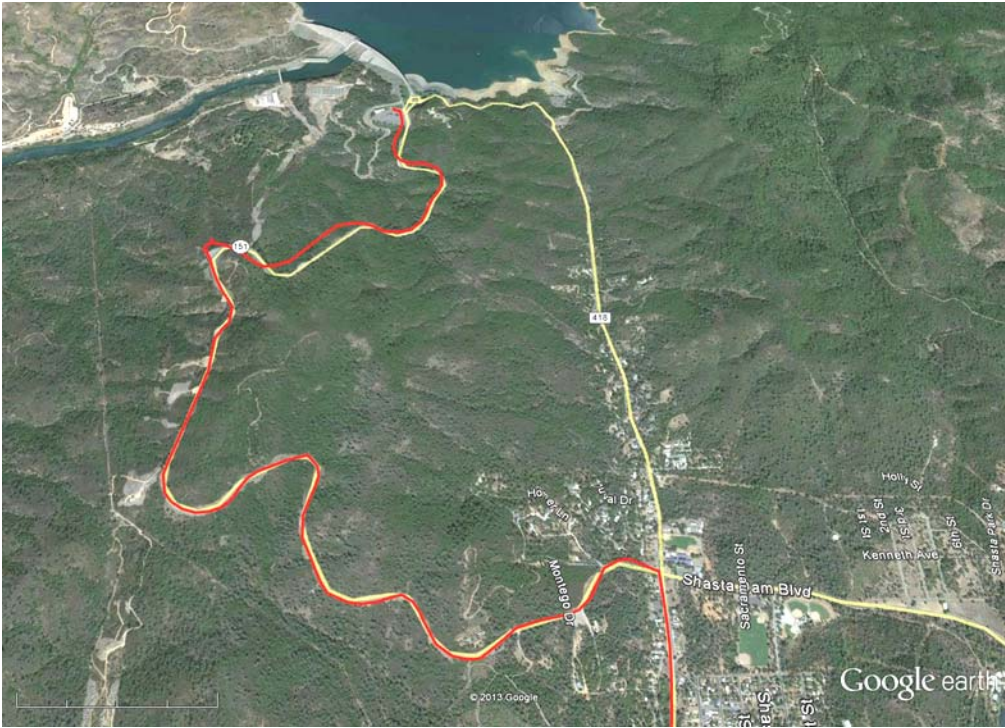
From intersection

- Head south on Lake Blvd. for 4.8 miles to Keswick Dam Rd.
- Turn right onto Keswick Dam Rd.
- Watch for traffic control soon after crossing the Keswick Dam
- Proceed through traffic control along Keswick Dam Rd. for 1 mile
- Turn right onto Iron Mountain Rd. for 1.6 miles
- Park your vehicle in the Rock Creek Road Trail Head Parking. Weak GPS Coverage in parking area
- **Note:** A quarter-mile walk along the paved trail is necessary to meet your runner at mile 10.4

Overall from Shasta Dam to mile ~10.4



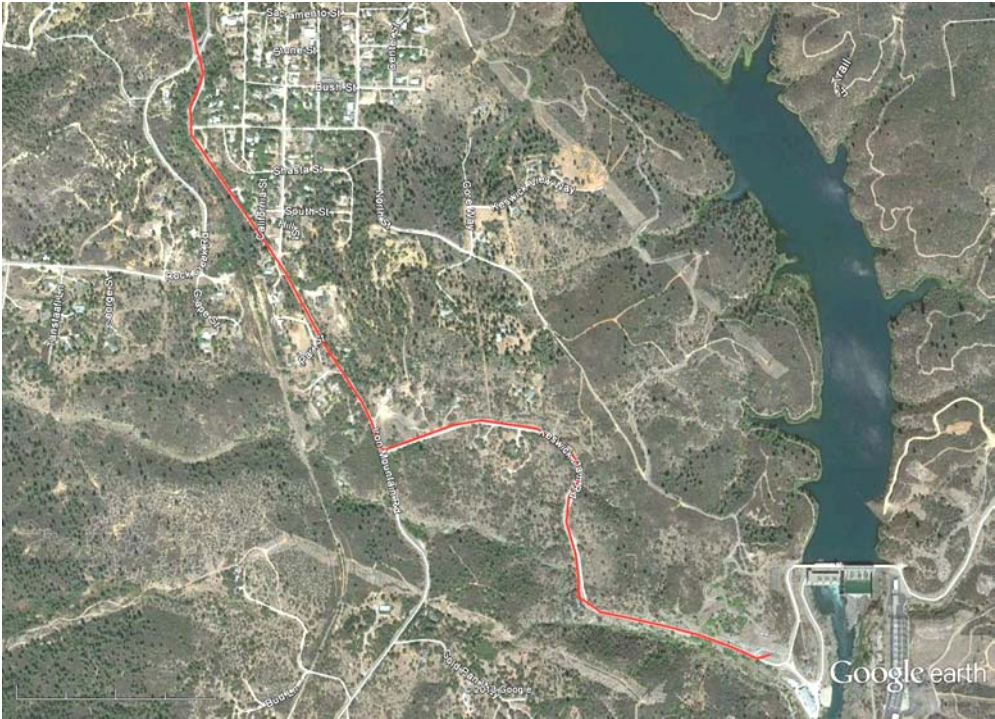
Intersection of Shasta Dam Blvd and Lake Blvd



Intersection of Lake Blvd and Keswick Dam Rd



Keswick Dam to Rock Creek Road Trail Head Parking



Rock Creek Road Trail Head Parking



Rock Creek Road Trail Head Parking



Parking at Rock Creek Road Trail Head Parking and walking path



Aerial Imagery obtained from Google Earth Pro, and modified