



COMMUNITY ACTION PARTNERSHIP OF SOLANO JOINT POWERS AUTHORITY

FOR IMMEDIATE RELEASE

CAP Solano JPA Releases the 2017 Point-in-Time Count Data

CAP Solano JPA

Attention:

Kathy Lawton-Caesar,
Chair/Executive Director
701 Civic Center Blvd.
Suisun City, CA 94585

707.428.7749

707.428.7798

capsolanojpa.org

JPA Board of Directors

Kathy Lawton-Caesar, Chair
City of Suisun City

Emily Cantu, Vice-Chair
City of Vacaville

Anne Putney, Secretary
City of Vallejo

Kristin Kamm
City of Benicia

Dawn La Bar
City of Fairfield

Issac George
City of Rio Vista

Tonya Nowakowski
Solano County

Suisun City, CA – July 14, 2017: The Community Action Partnership of Solano, Joint Powers Authority (CAP Solano JPA) released the results today of its Point-In-Time (PIT) Count and Survey for 2017. CAP Solano JPA is a governmental agency composed of the County of Solano and the cities of Benicia, Fairfield, Rio Vista, Suisun City, Vacaville, and Vallejo; it is charged with coordinating efforts to reduce poverty and homelessness in Solano County.

The PIT count is conducted at least biannually in Solano and is a requirement to receive homeless assistance funding from the U.S. Department of Housing and Urban Development (HUD). The last PIT Count was conducted in 2015. The PIT Count uses HUD's definition of homelessness, which includes persons living in shelters and places not meant for human habitation, but excludes persons who are living doubled up with others due to economic hardship or those living in RV or trailer parks. Annual school data on family homelessness and other counts use broader definitions of homelessness.

The PIT Count provides a snapshot of the number and demographics of those experiencing homelessness in the region on a given night, but is not designed to be a complete analysis of the issues surrounding homelessness nor a comprehensive count of all homeless persons served over the course of a year. This snapshot allows Solano to track trends concerning subpopulations, identify potential gaps in services and inform future planning, which is important for the implementation of the current regional strategic plan in Solano County.

The 2017 PIT Count process included an enumeration of unsheltered and sheltered homeless persons in Solano County. The unsheltered census was conducted on January 24, 2017 from approximately 6 a.m. to 10 a.m. and covered all of Solano County. The shelter census was conducted on the previous evening and included individuals staying in emergency shelters and transitional housing facilities.

KEY FINDINGS:

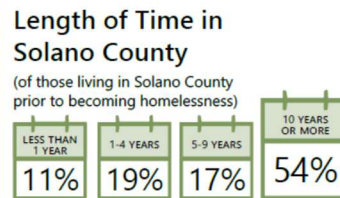
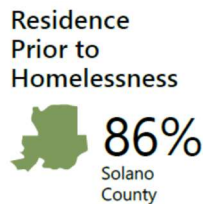
The population counted in Solano County who met the HUD definition of homelessness in a single 24-hour period in January 2017 was 1232, a 14% increase from 1082 in 2015.

Methodological improvements that resulted in a more thorough census this year:

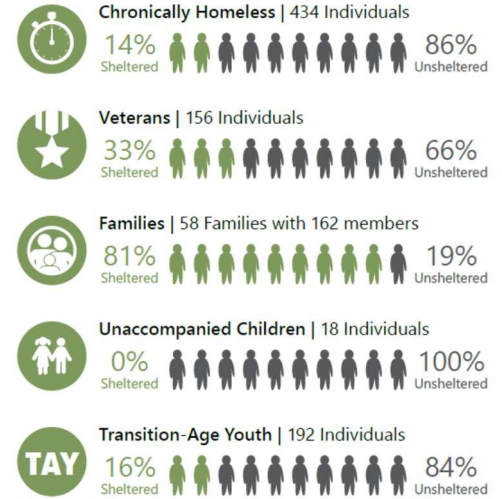
- The addition of targeted encampment and hot spot counting
- The addition of a specialized, separate youth count
- Flooding in the area that led some, previously hidden, homeless individuals to seek safety in more visible areas allowing them to be counted

HOMELESS CENSUS RESULTS BY HOUSEHOLD TYPE AND AGE GROUP

	2015					2017				
	CHILDREN UNDER 18	ADULTS 18-24	ADULTS 25+	TOTAL	% OF TOTAL	CHILDREN UNDER 18	ADULTS 18-24	ADULTS 25+	TOTAL	% OF TOTAL
Sheltered	45	17	225	287	27%	75	45	195	315	26%
Households with children	45	5	47	97	9%	75	14	42	131	11%
Persons in non-family households	0	12	178	190	18%	0	31	153	184	15%
Unsheltered	17	100	678	795	73%	38	164	715	917	74%
Households with children	8	1	8	17	2%	20	3	8	31	3%
Persons in non-family households	9	99	670	778	72%	18	161	707	886	72%
Total	62	117	903	1,082	--	113	209	910	1,232	--
Percent	6%	11%	83%	--	100%	9%	17%	74%	--	100%



Subpopulation Data



Overall, the data suggests that a large percentage of this population is chronically homeless or has significant service needs:

- The reported chronically homeless population has grown from 223 in 2015 to 434 in 2017 (35% of the homeless population)
- Nearly half of all respondents (48%) reported psychiatric or emotional conditions, 24% reported having Post Traumatic Stress Disorder and 41% reported substance abuse
- 62% report having a disabling condition that impedes their ability to live independently

Over half (59%) report that their current episode of homelessness has lasted for a year or more; 62% report experiencing multiple episodes of homelessness. 38% were experiencing homelessness for the first time indicating the opportunity for additional prevention services.

91% reported an interest in moving into safe, affordable, permanent housing if it were available.

The full PIT report, an Executive Summary, and an FAQ document with additional information can be obtained on the JPA website at: <http://www.capsolanojpa.org/>

Contact:

Carolyn Wylie, JPA Lead Staff

carolyn@homebaseccc.org

415-788-7961 ext. 309