

*Since 1948 Exploring the Wonderful World of Beekeeping Together*

## **The Bee Buzzer**

*Monthly Publication of the*

### **Northeastern Kansas Beekeepers' Association**

VOLUME 75, NUMBER 3

EDITOR: CHERYL BURKHEAD

March 2023

#### **General Meeting**

**Monday, March 20, 2023 (7:00 p.m.)**

**(IN PERSON ONLY-website for updates)**

Douglas County Fairgrounds Bldg. 21N  
2110 Harper St., Lawrence KS

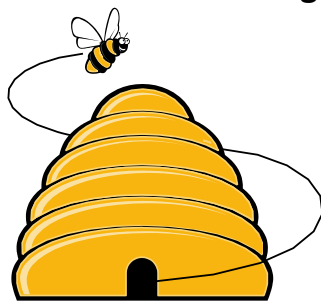
**Directions:** The address is 2110 Harper St. It is easily accessible from 23<sup>rd</sup> Street. Turn north on Harper Street and it is just a few blocks. We are in Building 21 North, which will be on your left after you turn into the fairgrounds.

**Main Program: Making Spring Splits and Queen Replacement** – Kristi Sanderson.

Kristi holds 2 Master Beekeeping certifications from Eastern Apiculture Society (EAS) and the University of Nebraska – Lincoln. She is currently our Special Events Coordinator and is active in KHPA where she serves as coordinator for the honey booth at the Kansas State Fair.

#### **Beelines**

**By President Ed Darlington**



This month I want to talk about what we beekeepers can do to strengthen our honey bee colonies.

While I understand the desire to eliminate all chemical treatments, thinking they are the root cause of a goodly number of the problems we are facing; there seems to be a refocus to “natural beekeeping”. Some may get talked into thinking that this means letting the colonies fend for themselves. Please take another look and be honest with yourself and realize that abandoning your colonies is not a viable solution. Wishful thinking will never out-perform responsible beekeeping. Recognizing that we may all be dealing with the damaged immune systems of our colonies, the big question becomes, “What positive effect can I have that will help my colonies not only survive but thrive?”

What are the things I can do that will help my bees? Causing a brood break will reduce the mite load on your colony. Read up on how to accomplish this; look in our library for “Innovative Beekeeping” by Grant Gillard.

Recognize that our colonies are in dire need of more diversity in their food. Too many of our farms have gone away from smaller, more diverse practices. We find much larger farms, but they are planting mono crops and their soils degrade much like our hives. We need more people willing to plant significant quantities of diverse wildflowers. We need this a lot more than we need more beekeepers. Our role of educating is a difficult one. This is extremely necessary; we need more and more people to plant an abundance of different varieties of bee-friendly flowers.

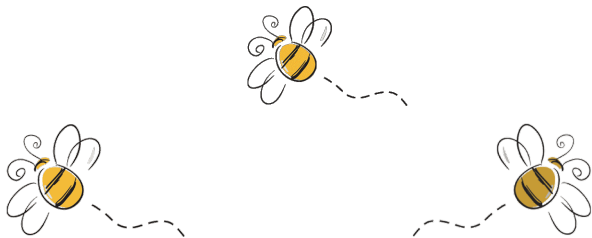
Also, equally important is for them to stop killing every insect in sight. For every harmful insect, there are hundreds of beneficial ones that get killed along with the bad actors. We have lost 50% to 75% of all insects in the last 50 years.

I realize there are many beekeepers that do not agree with me; they accurately state that bees can survive very cold temperatures. While very true; how much better would they survive if we gave them insulated hives? I have seen positive effects of insulated hives even during the summer. We are told to put our hive out in the sun to help alleviate problems caused by small hive beetles; yet bees that live in trees are obviously in the shade. Next time you see a lot of bearding, ask yourself why? What is the cause?

We humans have many of the same problems, not much yellow fever, or smallpox around now, but a ton of autoimmune diseases; maybe the same is true in our colonies. Maybe our experts do not know as much as they think they do.

*If you care about us, as we care about you, you'll make no delay and send in your dues-*

*We try awful hard; we work without pay- to help you keep bees, in a practical way. Your continued support, will help us to grow. The Editor and staff - thought you'd like to know.*



#### 2023 Meeting Dates:

- March 20, 2023 (Bldg. 21) @ 7 PM
- April 17, 2023 (Bldg. 21) @ 7PM
- April 24, 2023 Beginning Beekeeping (6:30p-9p)
- May 1, 2023 Beginning Beekeeping (6:30p-9p)
- May 8, 2023 Beginning Beekeeping (6:30p-9p)
- May 15, 2023



## Beekeeping Classes

For those of you who missed it or were unable to attend, we are repeating the Beginning Beekeeping class. It will take place in Building 21 at the Douglas County Fairgrounds in Lawrence, KS. This is the same meeting room where most of our monthly meetings take place. These classes will be held 3 Monday evenings starting April 24<sup>th</sup>, continuing May 1<sup>st</sup>, and ending on May 8<sup>th</sup>. Re-registration starts at 6:30 pm on April 24<sup>th</sup>. We will not be providing food or beverage but feel free to bring something for yourself. If you attended the January 28<sup>th</sup> & 29<sup>th</sup> beginning class, you are welcome to come again at no additional charge. Bring the notebook you were given; we are using the same notebook. Do not forget! - if you attended the 1<sup>st</sup> beginning class and come to the March monthly meeting, Joli will give you a lotion bar if you let her know you are there.

Thank you to all who helped at the *Year 2 and Beyond Beekeeping* class. It was a great event where lots of information was presented. A big shout out to those who stepped up and helped with registration. It takes many hands to make the work load easier for all.

If you have any questions; call, text, or email Kristi Sanderson at 913-768-4961. Email -

[Sandersonk09@gmail.com](mailto:Sandersonk09@gmail.com)

See you at the March meeting.

**Kristi Sanderson, Special Events Coordinator**



## RAFFLE PROCEEDS

Many thanks to those that donated to the raffle at the Year 2 Class! We made \$261 for the Youth and Military Scholarship Fund. Prizes were donated by Robert Hughes from Beekeepers.com. Tickets for the quilt, to be raffled at FunDay, will be available at our monthly meetings.

**Joli Winer**



## Ol' Bee Gal

Does the approach of bee season feel like a kid waiting for Christmas? You could be a beekeeper! That is exactly how I feel, and I think a lot of you know what I am talking about.

Dr. Jamie Ellis, University of Florida, will be our keynote speaker for this year's Funday. I would love every beekeeper reading this to join us. Dr. Ellis is one of the most respected bee researchers, teachers, publishers in the United States and that he is coming here is such a treat. He does a weekly podcast, "Two Bees in A Podcast," that is probably my favorite. It does not matter that he is in Florida (beekeeping is very regional). His topics are always applicable to my beekeeping and are thought provoking.

Dr. Ellis recently talked about what he considers the MOST IMPORTANT factors to successful beekeeping. He surveyed beekeepers across the U.S., and they targeted 4 main stressors. They were weather and climate changes, varroa management, nutrition, and queen quality. This was certainly an underlying theme at our Year 2 and Bee-Yond class this last weekend. Let us address these just a bit for Kansas.

Weather and climate change. Unless you are willing to relocate for your bees, this weather is what you've got, and you just roll with it. Making sure you have windbreaks in winter, water in summer, and paying attention to what's happening in your particular area is about all you can do. You cannot fix this.

Varroa and varroa management should top this list. Failure to control varroa will lead to hives that fail to thrive and then they die. What are your varroa numbers? When is the best time to treat? What treatment is best for your situation? Was your treatment effective? The Year 2 class was given the, *Honey Bee Health Coalition Guide to Varroa Management*, but it's a FREE download—anyone can have this valuable information. Controlling varroa means controlling disease, controlling varroa means increased bee/queen

longevity, and controlling varroa means larger winter clusters for increased chance of overwintering success.

Nutrition - recognizing and addressing the situation before it becomes dire. There is only one way to assess your hive's food availability, you must get into the hive. We are extremely lucky here in the very center of the U.S. as we almost always have abundant pollen sources (almost always). Choosing the food needs of your hive means knowing what they have and knowing what they will need. Raising lots of new brood and building wax, they need carbohydrates—sugar or honey. When we evaluate a location for our bee yards, we consider the floral sources of an area for all seasons. Hives surrounded by soy and corn will struggle. Hives with better nutrition are better able to fend off the viruses associated with varroa. Hives raising poor quality queens may not have adequate nutrition. A large variety of nutritional sources will contribute to an overall healthier hive.

Queen quality—a hive cannot thrive without a robust, young queen. Learning to recognize brood issues related to queen issues allows the beekeeper to take steps to mitigate the problem before it leads to colony loss. Queen issues are impacted by nutrition; poor nutrition leads to poorly reared queens. Queen issues are related to varroa infestation in that many of the varroa viruses are infecting the queen, both shortening her life and the quality of her brood. Keeping young, healthy queens in your hive is key to productivity and colony success.

There are, of course, many other stressors that impact our colonies: pesticides, other predators, and poor beekeeping practices to name a few. But these "Big Three," as Dr. Ellis calls them, can be controlled, and can change the course of your beekeeping year. Address them before they become a problem.

I hope you will find and listen to Dr. Ellis' podcasts. It is a great way to spend 30 minutes while puttering around your shop or kitchen. I adore Dr. Ellis' southern drawl and listening to him is a delight. More importantly, he has a wealth of knowledge to share and is not afraid to either give an opinion or say he's not sure. Come see him in person at our Funday, June 3<sup>rd</sup>. It will be a day you will not regret.

**Becky Tipton**

## ASK QUINBY & REMI



**Dear Quinby and Remi:** I see the bees flying in and out of my hives, I guess the bees are ok. What should I be doing this time of year?

**Quinby and Remi answer:** On a warm day when the bees are flying (like 60° and sunny), you can open your hive and take a quick peek. You should check that you have a queen, you should have brood now, too. The amount of brood will depend on how many bees you have in your hive. The queen will not lay out any farther than what the bees in the hive can keep warm. Do the bees have food? (honey)- if not you should feed. This time of year, you'll want to feed 1:1 syrup. It is more like the nectar in the flowers and the bees will build up faster on it. If feeding packages this is what you will feed too. 1:1 means 1 part sugar to 1 part water, by weight. That translates to 4# of sugar to ½ gallon (4# of water) of hot water.

**Dear Quinby and Remi:** I have a few weak hives, should I combine them all together to make a strong hive?

**Quinby and Remi answer:** First determine why they are weak- are they queenless? Have a queen but just a small population? Not have much food? Have a heavy mite load? If they have heavy mite load you would not want to combine them with another have because that would be mite bombing your other hive- instead treat for varroa and then combine. You could move your weak colonies to nuc boxes to boost them up or until you figure out what is going on.

**Dear Quinby and Remi:** Dead outs? What do I do with that equipment?

**Quinby and Remi answer:** Brush out any dead bees and put on top of any hives that are strong or that may need more food. Then, when you get queens and it is warmer, you can evaluate your hives and use that equipment to replace any dead outs. This

extra equipment on top of a strong hive can help control swarming until you can get your act together.

Quinby and Remi would love to answer your questions. Contact them by emailing their owner at [heartlandhoneyks@gmail.com](mailto:heartlandhoneyks@gmail.com).



### GPMB Hap-Bee Hour

GPMB (Great Plains Master Beekeepers) Happy Hour. Join the Great Plains Master Beekeepers on the second Friday of each month for *Hap-Bee Hour* at 5:30 pm CST. Join them by Zoom with ID number: 17906464818 and passcode: Bees123. Friday, March 10<sup>th</sup> via Zoom, Dr. Judy Wu-Smart will be presenting on **Conducting Winter Dead-Out Necropsies**.

### Make and Take Soapmaking Class

Saturday March 25<sup>th</sup> 2023, 9:00-11:00 AM  
Dreher Building, Douglas County Fairgrounds  
2110 Harper, Lawrence, KS

\*\*\*

Learn how to make Cold Process Soap from Joli Winer. Joli has been making soaps for more than 15 years. She will demonstrate how to safely make soap plus talk about ingredients and where to get them. She will also demonstrate how to make lotion bars and lip balms. Each paid registration will be able to make a batch of soap to take with them, get a lotion bar and a lip balm and get a copy of the recipes. The cost is \$35 per person. Limit of 35 people. You can register at [www.NEKBA.org](http://www.NEKBA.org) website. If you have questions call or text Joli at 913-593-3562 or at [heartlandhoneyks@gmail.com](mailto:heartlandhoneyks@gmail.com).

### MENTORING

Mentoring at our hives on the 4<sup>th</sup> Thursday of the month plus some other dates! Meet at the home of Joli and Cecil at 6pm at 19201 S. Clare Rd., Spring Hill KS. We appreciate a phone call or text to know that people are coming - 913-593-3562. Each time we will identify queens, eggs, larvae, lighting and using a smoker, do a powdered sugar mite check and talk about what you should be doing with your bees that month.



Please bring your beekeeping clothing. We have some extra clothing if you do not have anything. We invite you to go through our hives with us on the following dates (weather dependent): March 23<sup>rd</sup>, April 13<sup>th</sup> & 27<sup>th</sup>, May 25<sup>th</sup>, June 22, July 27<sup>th</sup>, August 24<sup>th</sup>, and September 28<sup>th</sup>.



## Tips for March

- Consider helping a neighbor get started in beekeeping by selling them a split from your hive. You can buy a queen from a queen breeder or local bee supply. This could keep your bees from swarming later in the year.
- Resolve to keep better records for 2023.
- Equalize hives to minimize swarming; brood from healthy hives may be transferred to a weaker colony. Food frames could also be shared. **WARNING:** never move frames unless you know where your queen is. **Find the queen first.** Never make an exception to this rule.
- You should have several frames of brood in your hives now. If you do not, then you have a problem. It may be your queen or there are not enough nurse bees to take care of the brood. The queen will not lay more eggs than the workers can care for or keep warm.
- Scrape off your bottom board.
- Check the level of your hives, they should tip slightly forward.
- Entrance reducers can be removed any time after April 1<sup>st</sup>.
- Check colonies for food-if they need food, feed. If they have food-do not feed unless you want to make some splits or increases-if you feed too much it encourages swarming. Know what your plan is for your hives before you take actions that have consequences. Bad weather can limit foraging opportunities for your bees. Feed 1:1 sugar syrup (by weight) to stimulate brood rearing -this translates to 1- 4 lb. bag

of sugar to ½ gallon of hot water.

- Check pollen stores, usually pollen is on the 2<sup>nd</sup> frame in on both sides-the outside frame is usually honey and the next frame in is usually pollen.
- Put a swarm trap in your bee yard. Bees are valuable.
- Evaluate your brood patterns to decide if you need to requeen your hive.
- Reverse your brood chambers if and only if your brood is all in the upper box-if it is in two hive bodies then leave it as it is.
- Replace any old or damaged comb-specifically any comb that has been damaged by mice.
- If you plan to treat for varroa mite, it is best to treat early when you have lower bee populations.



## Military/Veterans Apprenticeship Program

This month I would like to highlight Valor Honey out of Manhattan, KS. Valor Honey's mission statement is: "Our mission is to help transitioning service men and women suffering from invisible wounds of war through agriculture, specifically beekeeping." This organization is a 501(c)3 that sells honey, NUCs, and package bees and uses its proceeds to help provide counseling, beekeeping, and agricultural training. Valor Honey partners with Kansas State University and the University of Montana to provide transitioning veterans with a vast range of beekeeping knowledge and training. More information about Valor Honey can be found at <https://www.valorhoney.org//>.

**Buck Bradley, Military/Veteran Appr. Liaison**



## Honey Plants



March is a great month to begin marking dates in your calendar for all the local Native Plant Sales in the Kansas City Metro Area. Listed below are just a few to think about as you build a wish list of plants that you would like to add to your pollinator gardens. Happy shopping and remember to always plant in groupings, select native plants that have a natural tendency to establish well in their given ranges, and always remember that a budget is necessary when buying new plants to install in your landscapes. Otherwise, if you are like me, you will leave with a truckload full and a much lighter wallet.

### [Kansas City Native Plant Sale](#)

Anita B. Gorman Conservation Discovery Center  
April 15 @ 10:00 am - 2:00 pm  
4750 Troost Ave, Kansas City, MO

Deep Roots & GaleHart Communities  
Earth Day Festival & Native Plant Sale  
Saturday, April 22, 2023, 10:00 AM-2:00 PM  
Metropolitan Community College–Longview  
Campus  
500 SW Longview Rd, Lee’s Summit, MO 64081

Burroughs Audubon Society Native Plant Sale  
Saturday, April 22, 2023 10:00 am-2:00 p.m.  
[Backyard Bird Center](#), I-29 and Barry Road, KC  
North, 816-746-1113

Spring Native Plant Sale  
Saturday, April 29, 2023 9am-2pm  
Shawnee Indian Mission East building parking lot  
(3403 W. 53rd Street Fairway, KS 66205)

### [Kansas City Native Plant Sale](#)

Anita B. Gorman Conservation Discovery Center  
May 13 @ 10:00 am - 2:00 pm  
4750 Troost Ave, Kansas City, MO

Grassland Heritage Foundation's 11th Annual  
Native Plant Sale  
May 20th, 2023 from 10 AM to 1 PM  
Trinity Episcopal Church in Lawrence, KS.

Douglas County Master Gardeners Native Plant  
Sale, Douglas County Fairgrounds

Saturday, June 4th from 9am-2:30pm

**Chad Gilliland, Honey Plants Chairman**



## **Third Thursdays- Extracting More Money from your Hives- Value-Added program**

The Kansas Honey Producers Association- 3rd  
Thursday, **Extracting More Money from your Hives**  
is at 7pm CST on Thursday, March 16<sup>th</sup> 2023.

**“Making Money with your Bees- Pollination  
Services.”** Matt Winstead from Golden Rule Honey  
Bee Farm in Bates City, MO will present. Matt does  
pollination and just took bees to California for  
almond pollination. He will have a lot to share with  
us.

If you have never registered for Zoom  
presentations, please go, and register at  
[www.kansashoneyproducers.org](http://www.kansashoneyproducers.org). Please do not re-  
register if you have already registered, you will be  
sent the link. KHPA Membership is \$15 per year.  
You will receive an email before the programs with  
the link to register. If you registered  
before or are a NEKBA member or a KHPA member,  
you will receive the link each month, but you may  
be asked to register again.

These programs are being recorded and will be  
available on our  
[http://www.kansashoneyproducers.org/archives.ht  
ml](http://www.kansashoneyproducers.org/archives.html) website, under the 'Archives' page.

### **Upcoming Programs:**

\*Thursday, April 20<sup>th</sup> - **Agritourism and Beekeeping  
and Changing Your Future**, Clint Walker from  
Walker Honey Farms, Rogers, Texas & Frank  
Gieringer from Gieringer’s Orchard and Berry  
Farms, Edgerton, Kansas present.

Success stories from those who have listened to  
these Zoom talks! Let us know who you are! (Joli  
913-593-3562 or [heartlandhoneyks@gmail.com](mailto:heartlandhoneyks@gmail.com)).



# Northeastern Kansas Beekeepers Association

## Beginning Beekeeping Class

April 24, May 1, 8

Douglas County Fairgrounds, Lawrence, KS, Building 21

### April 24, Monday

- |           |   |
|-----------|---|
| 6:30-6:45 | Registration                            |
| 6:45-6:55 | Introduction Welcome - Kristi Sanderson |
| 6:55-7:25 | Equipment - Jay Francis                 |
| 7:30-8:15 | Honey Bee Biology - Becky Tipton        |
| 8:20-9:00 | Starting with Bees - Kristi Sanderson   |

### May 1, Monday

- |           |   |
|-----------|---|
| 6:30-6:45 | Welcome (The Resources in your Book) - Kristi Sanderson |
| 6:50-7:10 | Location, Location, Location - Bruce Lane               |
| 7:15-7:45 | Summer Beekeeping - Jo Patrick                          |
| 7:50-8:35 | Varroa Mite - Joli Winer                                |
| 8:40-9:00 | Beehive Inspections - Matthew Brandes                   |

### May 8, Monday

- |           |  |
|-----------|--|
| 6:30-6:45 | Welcome & upcoming events - Kristi Sanderson |
| 6:45-7:25 | Fall Management - Steve Tipton               |
| 7:35-8:25 | Keeping a Healthy Hive - Cheryl Burkhead     |
| 8:30-9:00 | Extracting Basics - Bob Burns                |

**\*\*\*TAKE NOTE\*\*\* No food or beverages will be provided. Feel free to bring your own dinner and beverage.**

**If you need to get up for any reason do so as quietly as possible so as not to disturb others. Thank you for your cooperation.**

**Spring 2023 Kansas Honey Producers Assn. Program – March 10 & 11, 2023**  
**Courtyard by Marriott – 3020 Riffle Dr. – Salina, KS**  
**Program for the KHPA Spring 2023 Meeting**

**KHPA Spring 2023      Friday, March 10, 2023**

- 8:00-8:45      Registration. Set up - Silent Auction Items  
8:45-9:00      Welcome & Announcements: Becky Tipton, President  
9:00-9:45      Allen Amor – Insurance for your Bee Hobby/Business - American National Property & Casualty Insurance Co  
9:45-10:00     Speaker TBA - Package Bees & Nucs  
10:10-10:30    20- minute break. \*Break\* Visit the vendors \* Silent Auction Bids  
10:30-12:00    Megan Cramer - Shop Kansas Farms - KS Farm Bureau - Marketing  
12:00           Julie Cahoj - New Grant Group - Meeting with Julie for program details\*\*  
12:00-1:15     LUNCH  
1:15-2:00      Ryan Engle - KSU Extension - topic TBA (Ryan's Master's research was on pollen).  
2:00-2:20      20- minute break. Close out Silent Auction  
2:20-3:05      Speaker TBA - Making Splits  
3:05-4:15      Kate Schmidt - Dyck Arboretum (Grounds Mgr./Horticulturist) Planting for Pollinators    Hesston, KS  
04:15           KHPA Region Meetings – South Regions select Director Nominations – Groups Meet to Discuss Regional Issues and Concerns  
06:00           Banquet –

**KHPA Spring 2023      Saturday, March 10, 2023**

- 8:00-8:45      Registration. Set up - Silent Auction Items  
8:45-9:00      Welcome and announcements: Becky Tipton, President  
9:00-9:45      Kristi Sanders - State & Local Fair Entries - Tips & Hints for Competition  
9:45-10:00     Julie Cahoj - Exploring the Flow Hive  
10:00 -10:25    20- minute break  
10:25-11:00    Kansas Legislative Update - Jim Kellie  
11:00-11:50    KHPA Business Meeting  
11:50-1:05     LUNCH  
1:05-1:55      Mark Wood - Income Tax Reporting for the Hobby Beekeeper - Farm Mgmt. Serv Accountant  
1:55-2:20      25- minute break. Silent Auction closes at end of break  
2:20-2:40      TBA  
02:40           Open Panel Discussion – A group of experienced KHPA Beekeepers will answer your questions ... and adjournment.

Spring 2023 KHPA conference closes - See You Next Fall! November 10 & 11, 2023

Program, Topics and Speakers and Times Subject to change. Register & pay online:  
<http://www.kansashoneyproducers.org> Contact Robert Burns with questions.





# FunDay!

Northeastern Kansas Beekeepers Association

June 3, 2023

Douglas County Fairgrounds

Dr. Jamie Ellis - University of Florida

Dr. Autumn Smart - University of Nebraska

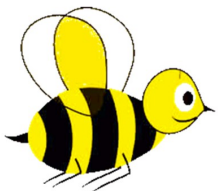
Dr. Judy Wu-Smart - University of Nebraska

University of Nebraska Research Students

Great Plains Master Beekeeper Hives

National, Regional, and Local Experts

Hive Demonstrations, Door Prizes, Vendors, Honey Ice Cream, Silent Auction, Mead Making, Candle Making, Value Added Product Demonstrations, Lunch and Snack provided. Learn how to create better bee and butterfly habitat in your yard. Kid friendly. Optional evening dinner. Bring your bee suit or veil!



Register online: [www.nekba.org](http://www.nekba.org)

Stay tuned for more information



## NORTHEASTERN KS BEEKEEPERS' ASSOC. 2023 MEMBERSHIP APPLICATION

NAME \_\_\_\_\_  
ADDRESS \_\_\_\_\_  
CITY \_\_\_\_\_ STATE \_\_\_\_\_ ZIP+4 \_\_\_\_\_  
PHONE \_\_\_\_\_ Email Address \_\_\_\_\_  
I would like to receive the newsletter, *The Buzzer*, by email Yes \_\_\_\_\_ No \_\_\_\_\_

Membership Northeastern KS Beekeepers per year (July-Dec. \$12.50)	\$25.00	_____
Additional family members wanting voting rights \$1.00 per person	\$1.00	_____
Additional family member's name _____ (Youth Membership (18 years of age or under)	\$12.50	_____
Membership for Kansas Honey Producers Association	\$15.00	_____
American Bee Journal ( <u>discounted rate through association</u> )	1 year \$27.65	_____
Bee Culture Magazine (or subscribe online at <a href="http://www.BeeCulture.com">www.BeeCulture.com</a> )	1 year \$32.00	_____
Scholarship / Military/Veteran's Appr. Donation		_____
	<b>Total</b>	_____

**Make checks payable to: NEKBA or Northeastern Kansas Beekeepers Assn.**

Mail to: Robert Burns, 7601 W 54<sup>th</sup> Terr., Shawnee Mission KS 66202 ph. 913-481-3504, [rburnshoney@gmail.com](mailto:rburnshoney@gmail.com)

You may join, re-new, register, donate and pay online at [www.nekba.org](http://www.nekba.org)

### MENTORING-SWEET PRAIRIE HONEY

Need help with your hives? -Spring inspections, installing packages, making splits, queen evaluation, diagnosis of pests and diseases, mite monitoring and treatment, etc. I can help you with your beekeeping needs! I am a certified master beekeeper with 30 + years of beekeeping experience. I will leave you with a written course of action after our session at your hives. Call or text at 913-768-4961 or email Kristi Sanderson at [sandersonk09@gmail.com](mailto:sandersonk09@gmail.com) for pricing and appointment times.

### BEEKEEPERS.COM

[Beekeepers.com](http://Beekeepers.com) (Jordy's Honey Company) in [Lenexa, KS](http://Lenexa, KS). We are now accepting pre-orders for 3 lbs. packages and 5 frame Nucs. Choose from MN Hygienic, Italian, or Carniolan queens. Queens will be marked for your convenience. Packages and Nucs have been treated for mites so no treatments needed until Fall. 6 pickup dates to choose from in April so get your orders in soon as we sell out each year. [Beekeepers.com](http://Beekeepers.com) is your only local full-service beekeeping store. We carry a full line of Beekeeping Supplies, Protective Clothing, Bottles, Bee Packages, Nucs and Queens. Visit our web site [Beekeepers.com](http://Beekeepers.com) to view our entire line of beekeeping supplies. You can also shop in-person at our store in Lenexa. We ship queens directly to YOU! Order at [QueenBees.com](http://QueenBees.com). Queens available March - October. Our hours are Monday-Friday 9:00-4:00, Saturday 9:00-12:00. You can find our honey at The Overland Park Farmers Market. **Robert Hughes**, 14054 W 107<sup>th</sup> St, Lenexa, KS 66215, 913-681-5777 or email [Info@Beekeepers.com](mailto:Info@Beekeepers.com)

### COTTIN'S HARDWARE & RENTAL

Cottin's stocks a full line of beekeeping equipment year-round including items manufactured by Harvest Lane Honey, Little Giant, and Bug Baffler. Products include hives, supers, frames, foundations, extractors, tools, and protective apparel. We also stock a full line of Home Brewing Mead Making supplies. Located in Lawrence, KS at 1832 Massachusetts Street (South of Dillon's). We are open Monday - Friday 7:30 am - 6:00 pm, Saturday 8:00 am - 5:00 pm, and Sunday 10:00 am - 5:00 pm. You can follow us on Facebook, Instagram and Twitter. Call us at 785-843-2981 or email us at [hardware@sunflower.com](mailto:hardware@sunflower.com)

## CB'S HONEY

CB's Honey is now accepting orders for 5 frame nucs. Queens will be marked upon request. Don't delay as I make a limited number and sell out every year. Order your 2023 Nuc by completing form online at [CB's Honey 2023 Nuc Order Form \(google.com\)](#) or via [CB's Honey | Facebook](#). Pure raw Kansas honey available in 5 gal buckets. Located just SE of Topeka. 4521 SE 61<sup>st</sup> Street, Berryton, KS 66409. Call or text Cheryl Burkhead at 785-224-9077 or email @ [cherylbhoney@gmail.com](mailto:cherylbhoney@gmail.com)

---

## CEDAR RIDGE BEES

5 Frame Nucs for Sale. We are your local Premier Bee Products Dealer specializing in plastic foundation made entirely in the U.S.A. We sell bucket feeders and other bee equipment. Call or text Philip Knaus at 785-581-4216 or contact us at [cedarridgebeehives@gmail.com](mailto:cedarridgebeehives@gmail.com) - Check out our bees and products at [www.cedarridgebees.com](http://www.cedarridgebees.com) Cedar Ridge Bees 585 N 500 Rd, Overbrook, KS 66524

---

## T CREEK BEES AND HONEY – Tecumseh/Berryton, KS

Tecumseh Creek winds its way through the home yard lending its name to the brand. Located between Lawrence and Topeka, T Creek offers 5-frame nucs, online honey sales, custom honey packing, wholesale delivery to the Topeka / Lawrence area, 5-gallon buckets of honey, and drop-shipping wholesale service to rural grocery stores and agritourism destinations. Visit [www.tcreekbees.com](http://www.tcreekbees.com) Email: [tcreekbees@gmail.com](mailto:tcreekbees@gmail.com) or find the bees on Facebook. Order 2023 5-frame nucs by visiting the website and completing the nuc order form. Owner: Tim Urich. LLC in the State of Kansas and licensed by Kansas Dept of Ag.

---



**Honey Bee Biology AND BEEKEEPING, Third Edition, Dewey M. Caron and Lawrence John Connor, \$90 postage included.** *This book should stay on the dashboard of every beekeeper's truck. It's that good, and that necessary. Kim Flottum, Bee Culture.* This comprehensive textbook easily replaces many beginner books while adding comprehensive details of bee biology essential to becoming a successful beekeeper and student of the honey bee. First released in 1999, *Honey Bee Biology and Beekeeping* is widely accepted as a major textbook of Apiculture (beekeeping). Beekeepers and bee clubs use it to teach other beekeepers. Universities use it to teach college students bee biology and beekeeping. It concentrates on the 'why', 'how' and 'when' of beekeeping. It explains bee and beekeeping basics in a manner meaningful to people who lack an extensive back-ground in biology. Yet it is not over-simplified, and provides a meaningful source of beekeeping information for the informed beekeeper. The Third Edition has been carefully edited, updated and expanded to 480 pages. New chapters have been added, as have colorful new graphics and photographs. The Glossary has also been expanded. **Wicwas Press LLC Kalamazoo, MI 49001 - [www.wicwas.com](http://www.wicwas.com)**

**The Association does not endorse nor evaluate the advertisements, products or services offered in the Buzzer.**

Northeastern Kansas Beekeepers Association  
Robert Burns, Treasurer  
7601 W 54<sup>th</sup> Terr  
Shawnee Mission KS 66202-1129

## Address Service Requested

### Meeting

Monday, March 20, 2023 (In Person)

### ***The Northeastern Kansas Beekeepers' Association***

Membership is open to anyone interested in bees or bee culture. Dues are \$25.00 per calendar year (December 31-December 31) for the first in the family joining. Those joining in July or later in the year may pay \$12.50 for ½ year. Additional members of that family wanting voting privileges shall be assessed dues at \$1.00 per year. Youth memberships (18 years of age and younger) are \$12.50 per year. Please submit new memberships and renewals to the treasurer or on-line at [www.nekba.org](http://www.nekba.org).

*The Bee Buzzer* is the official publication of the Northeastern Kansas Beekeepers' Association, Inc. and is published monthly. Commercial ads are accepted in the newsletter for a fee; non-commercial ads by paid members are accepted & are free.

The library of the association is free to all members. Books may be checked out at the meetings and kept for a period of 30 days. The bee publications, *The American Bee Journal* and *Bee Culture* can be subscribed through the treasurer or on-line. The *American Bee Journal* is offered at a discount through the association only.

The Association meets each month, generally on the third Monday at 7:00 p.m. except during the months of January and July. Beekeeping classes will tentatively be held in January and February for 2023. This is a non-profit organization; elected officers serve without pay. Everyone is invited to attend the meetings. Check *The Bee Buzzer* or website at [www.nekba.org](http://www.nekba.org) each month for the actual date, time and location. If the weather is bad, call an officer or check the website to find out if the meeting will be held or cancelled.

#### **2023 Officers**

President: <b>Ed Darlington</b> , 2804 E 174th St., Belton, MO 64012	<a href="mailto:edarlington49@gmail.com">edarlington49@gmail.com</a>	816-331-4934
1st VP (Program Chair): <b>Matt Brandes</b> , 4741 Highway K 68, Wellsville, KS 66092	<a href="mailto:matthew@n523rv.com">matthew@n523rv.com</a>	913-706-3087
2nd VP (Librarian): <b>Cecil Sweeney</b> , 19201 S Clare Rd, Spring Hill, KS 66083	<a href="mailto:heartlandhoneyks@gmail.com">heartlandhoneyks@gmail.com</a>	913-593-3851
3rd VP (Honey Plants): <b>Chad Gilliland</b> , 23338 Kissinger Rd, Leavenworth, KS 66028	<a href="mailto:nexttonaturefarm@gmail.com">nexttonaturefarm@gmail.com</a>	785-491-1978
Secretary: <b>Elaine Ellenz</b> , 17650 W 113 <sup>th</sup> St., Olathe, KS 66061	<a href="mailto:elaineellenz@gmail.com">elaineellenz@gmail.com</a>	913-515-1607
Treasurer: <b>Robert Burns</b> , 7601 W 54 <sup>th</sup> Terr., Shawnee Mission KS 66202	<a href="mailto:rburnshoney@gmail.com">rburnshoney@gmail.com</a>	913-481-3504
Youth Scholarship Chair: <b>Dale Spurlin</b> , 24964 160 <sup>th</sup> Ct., Leavenworth, KS 66048	<a href="mailto:LightedPathHoney@outlook.com">LightedPathHoney@outlook.com</a>	913-775-0997
Military/Veteran Appr. Liaison: <b>Buck Bradley</b> , 11 E 900 Rd., Baldwin City, KS	<a href="mailto:buckusmc00@hotmail.com">buckusmc00@hotmail.com</a>	785-248-1005
Editor: <b>Cheryl Burkhead</b> , 4521 SE 61st St., Berryton, KS 66409	<a href="mailto:cbfritz@aol.com">cbfritz@aol.com</a>	785-224-9077
Special Events Coordinator (Class): <b>Kristi Sanderson</b> , 1252 E Frontier Ln., Olathe, KS 66062	<a href="mailto:sandersonk09@gmail.com">sandersonk09@gmail.com</a>	913-768-4961
Special Events Coordinator (Funday): <b>Jay Francis</b> , 6040 NW 52 <sup>nd</sup> St., Topeka, KS 66618	<a href="mailto:jay.m.francis@gmail.com">jay.m.francis@gmail.com</a>	785-608-0726
Webmaster: <b>Robert Burns</b> , 7601 W 54 <sup>th</sup> Terr., Shawnee Mission, KS 66202	<a href="mailto:rburnshoney@gmail.com">rburnshoney@gmail.com</a>	913-481-3504

Visit on-line at [www.nekba.org](http://www.nekba.org). Save time. Join, re-new, or register.