

# Survey USV



Survey USV is exclusively designed for single-person measuring work of lakes and rivers. Trimaran design ensures stable sailing and is used in conjunction with dual pump-jet thruster, RTK, single beam, HD image, and intelligent ship control are integrated for more convenient and high precision underwater measurement.



## Easy Work For Even One Person

The size is only 900×500×340mm, the whole set of which can be carried by one single person without difficulty. The hull can be easily put into a car trunk. A single worker is able to quickly conduct his hydrographic survey as soon as the battery and the antennas are installed.





## Convenient Operation

The boat is ready for measuring work from one site to another within minutes



## Working Time

Customized working time, 3 hours for 1 battery



## Dual Pumpjet Thrusters

Equipped with high-speed thruster, the top speed is up to 5m/s and is able to work in torrent.



## 4G For Remote Control

4G network brings unlimited control distance



## Single beam Echosounder

Equipped with highly sensitive echosounder that enables it to work in shoal, the shallowest of which is 0.2 meter

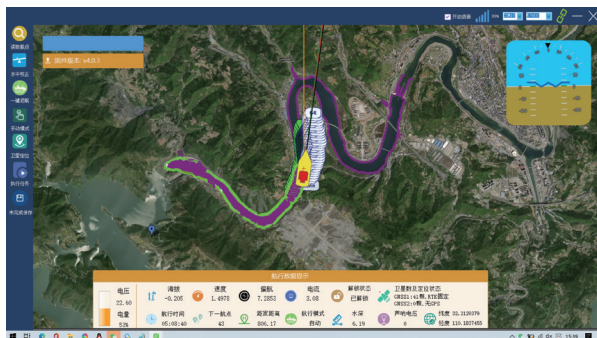


## Protection

Streamline slope design at the bottom of the boat plus blade-like filter and pump protect the vehicle from being entangled by aquatic plants

# Integrated Software System

The Survey USV software system is a software solution used for route planning, parameter setting, hull control, data display, status display and data export, etc. Customized maps and satellite image maps can be imported or downloaded when the network is working. The software system is able to automatically generate routes, execute navigation tasks, continue navigation task after breakout and finally return to the place of departure.





# Specification



Hull	×1
Propeller	×2
Intelligent hull control	×1
Built-in RTK	×1
Built-in HD camera	×1
Built-in single-beam echo-sounder	×1
Dual rocker android remote controller	×1
High performance water-proof battery	×1
Charger	×1
Communication antenna	×2
GNSS antenna	×2
Network antenna	×1
Radio antenna	×1
Carrying Case	×1
Life jacket	×1
Tool kit	×1
Instruction manual	×1

Physical	Dimension	900×500×340mm
	Material	Polymer material
	Design	M-type trimaran
	Weight	16kg
	Max Payload	20kg
	Anti Wind&Wave	Level 4
Echosounder	Range	0.2m-120m
	Accuracy	1cm±0.1%height
	Resolution	1cm
	Beam angle	7.5°±0.5°
Obstacle Avoidance	Video	1080HD
Power	Thruster	DC pumpjet thruster
	Propeller	3-piece aviation aluminum alloy paddle
	Protection	Double protection from aquatic plants
	Speed	Cruise 2m/ s, top speed 5m/ s
	Battery	22.2V 30Ah
	Working time	3h (2m/s) , customized 6h
Position And Orientation	Satellite	GPS: L1C/A, L1C, L1P, L2C, L2P, L5、 BDS: B1I, B2I, B3I, B1C, B2a、 GLONASS: G1, G2, G3、 Galileo: E1, E5a, E5b、 QZSS: L1C/A, L1C, L2C, L5
	RTK	Built-in GNSS receiver
	Accuracy	Horizontal: ± (8+1×10 <sup>-6</sup> D) mm, Vertical: ± (15+1×10 <sup>-6</sup> D) mm
	Channel	432
	Orientation	Three-dimensional electronic compass
		Dual GNSS antenna
Communication	RTK	Built-in radio and 4G network
	Video	5.8GHz
	Remote	5.8GHz
	Control Distance	Unlimited by network, 2Km by radio

\*The above technical parameters are for your reference . The company reserves the right to change the design and planning of the product based on continued development