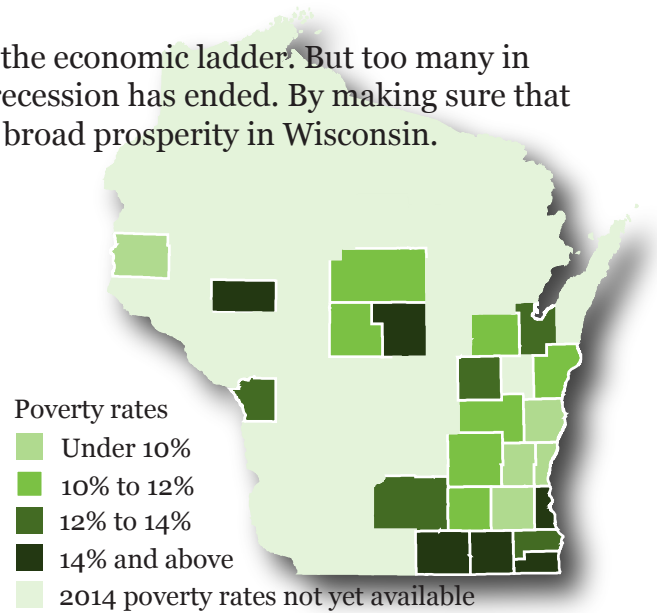
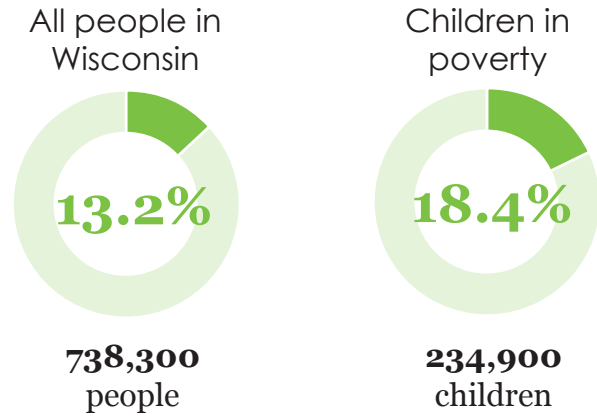


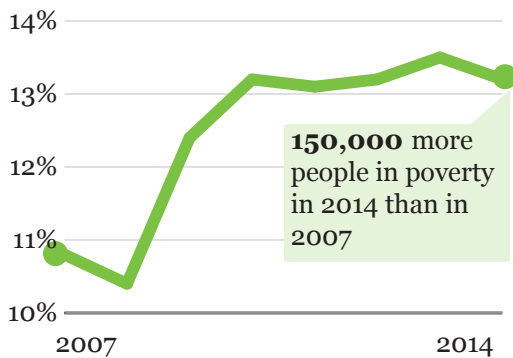
2014

Poverty in Wisconsin

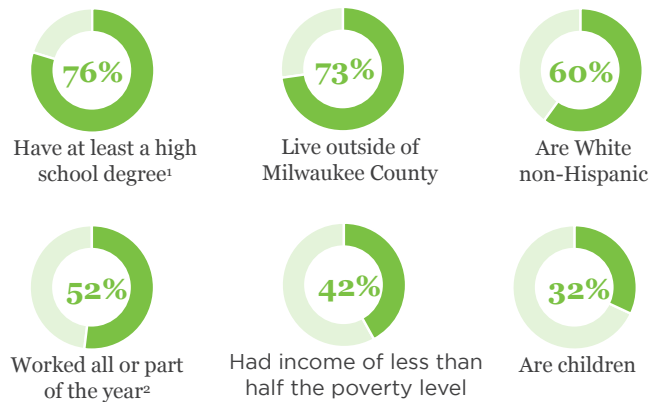
Every person in Wisconsin deserves a chance to climb the economic ladder. But too many in Wisconsin are still trapped in poverty, years after the recession has ended. By making sure that everyone has the opportunity to succeed, we can build broad prosperity in Wisconsin.



Years after recession is over, poverty rates stay high in Wisconsin

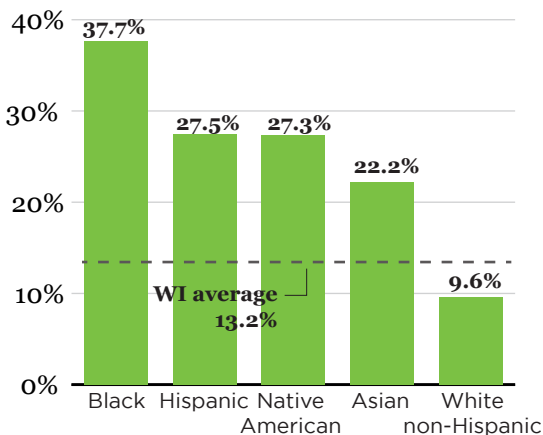


Share of people in poverty in WI in 2014 who...



¹ Share of adults age 25 and older ² Ages 16 and older

Poverty by race
2014



Median household income by race
2014

