

2ND QUARTER 2014



Douglas - Elbert County Horse Council

5450 East Best Road - Larkspur, Colorado 80118

www.dechc.org

May 21, 2013

Purpose: to promote and improve the horse industry; to provide emergency related rescue; to educate and report horse related issues; to support trail development, safety and open-space.

Douglas-Elbert County Horse Council (DECHC)

Board of Directors:

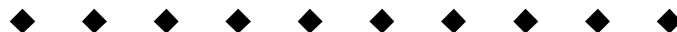
Jan Wehrli, President; Ben Greene, Vice President; Sherry Helmeke, Secretary; Fred Wehrli, Treasurer; Cindy Adams, Jewel Beach, Tina Mavor, Scott McEldowney, Carroll Rice and Doug Walker

5450 East Best Road
Larkspur, CO 80118
303-688-0553

www.dechc.org



Visit the Douglas-Elbert County Horse Council website at <http://dechc.org> and enjoy the photos that have now been posted for the DECHC events. Browse through the categories and many links available to horse people.



PRESIDENT'S STALL



After Douglas-Elbert County Horse Council's April meeting with Terrance Quinn, Director of Planning and Parks and Dan Dertz, Public Outreach and Assistance Supervisor, things are hopping in Douglas County. Dan said, "Staff has spend a good deal of time reviewing the Equestrian Design Guidebook for Trails, Trailheads and Campgrounds". Dan is in the process of drafting design guidelines based on the USDA and Forest Service Design Guidebook, along with other regulations and findings. Thanks to our members that let us know what was happening and Fred Wehrli's letter to the County Commissioner, something is being done about our Park System Trailheads.

We are still going strong towards our annual Trail Ride coming up on September 13th. It looks like a ride that everyone should come on. We will keep you updated, as it gets closer.

Fred & I had a heartbreak on Monday, May 5th as we found our wonderful Stallion "Dusty" had passed away during the night. He will definitely be missed at all the parades that he has proudly carried the Douglas-Elbert County Horse Council members in. He was 25 and we had owned him for 23 years. He showed us as a wonderful 2 year old that he could learn to pull a carriage in a parade and do it proudly. He was so laid back he even wore pants in the last several parades. Everyone loved him.

Hope to see some of you on the trail. Ride safe and have fun this summer.

Jan Wehrli

EMERGENCY PREPAREDNESS CLINIC REPORT

The 3rd annual Emergency Preparedness Clinic was a great success. Over 80 people had reserved spaces for the clinic. Due to another clinic at the Douglas County Fair Grounds about 60 showed up for the clinic. The agenda was expanded from the previous clinics. This year a trailer loading clinic was added. Jan Wehrli, the president of the Douglas-Elbert County Horse council, welcomed all the participants to the clinic. She also provided introductions for all the speakers. Scott McElDowney was the first speaker talking about the importance of prioritization, what to expect from you local response agencies, and the importance of preparation. Doug Walker was the next speaker and he addressed why you should make prior arrangements for you and your horses.

Carroll Rice spoke about how to ID your horse, including what phone numbers to put on tags or halters. Sue Kalamen spoke about the importance of being able to load you horse in different trailers by different people. This year we had two representatives from the national Fire Protection Association to present how to prepare your facility. Lucian Denton and Dave Nuss gave us ideas about fires, what to clear away from structures and other tips on fire prevention.

Tina Mavor presented what to have in a disaster kit and the importance of having it in a location you can quickly grab and load in an emergency. Fred Wehrli explained the importance of having brand inspections on your animals. Yvetter Gonzales finished up the morning session with what to do with other pets.

This year we added an afternoon session. The afternoon was all about trailer loading. We were lucky to have a trainer work with the participants to load horses (not their own) into all different types of trailers.

Thank you to all the participants, the guest speakers and the members of the board



Emergency Preparedness Clinic 2014
Douglas Elbert County Horse Council
pg2

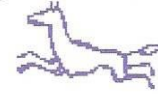




Trailer Loading with Tia Jones and Scott McEldowney Emergency Preparedness Clinic 2014



Where Can I Ride My Horse in Douglas County?



Trail	Water	Miles of Trails	Surface	Toilet	Trailer Parking	Hitch Rails	Picnic Tables
Open daily							
Bayou Gulch Regional Park	spigot	3.0	crusher fines	yes	yes	no	yes
And Open Space	ponds	2.0	natural				
Bluffs Regional Park	no	3.5	crusher fines	yes	yes	no	yes
Chatfield State Park	spigot, river	24.0	natural	yes	yes	no	yes
Cherry Creek Regional Trail	creek	17.0	concrete	yes	yes	no	yes
Columbine Open Space	no creek access	3.0	/natural crushed concrete	yes	yes	no	yes
Dawson Butte Ranch Open Space	no	5+jump paths	natural	no	yes	no	yes
DuPont Open Space	creek	dispersed	vegetation	yes	yes	no	yes
East-West Regional Trail	no	17.0	crusher fines	yes	yes	no	yes
Glendale Farm Open Space	spigot	1.3	/natural natural	yes	yes	yes	yes
%Greenland Open Space	spigot, ponds	11.0	crusher fines	yes	yes	yes	yes
Hidden Mesa Open Space	spigot, creek	5; 7 RT	natural	yes	yes	yes	yes
Highline Canal Trail	seasonal canal	13.0	some rocks crusher fines gravel	yes	yes	no	yes
Lincoln Mountain	creek	6.7 +RT	natural	yes	yea	yes	yes
			some rocks				
Pike National Forest							
*Indian Creek Trail	spigot	15.0	natural	yes	yes	no	yes
			some rocks				
Nelson Ranch Open Space							
*Swallowtail Trail Loops	seasonal creek	2.6	natural		at Sharptail	yes	yes
Pike Hill Open Space							
*Ringtail Trail	seasonal creek	7.2	natural		at Sharptail & Indian Creek	no	yes
Sharptail Ridge Open Space							
* Sharptail Trail	spigot	4.6	natural	yes	yes	yes	yes
%Spruce Meadows Trail	seasonal ponds	8.5	natural	yes	yes	yes	yes
%Spruce Mountain Open Space	no	8.5	natural	yes	Spruce Meadows	no	yes
Rides by Arrangement							
Prairie Canyon Ranch	spigot/creek	dispersed	natural	yes	area	no	yes
(Guided rides by arrangement only)			some rocks				

(Trails and amenities may change as more properties are opened to the public and improvements are made.)

* or % These trails are connected or in some vicinity. View trail descriptions at www.douglas.co.us/OpenSpace

RIDE OF THE MONTH

By Cindy Adams

I hadn't ridden the bayou gulch trail in a while and had heard a new section is now open so one of the 65 degree days in April my saddle buddy and I decided to try it out.

There is a traffic light at the horse crossing on bayou gulch with the crossing button positioned at horse level so crossing the road was not a problem.

The new trail is a nice dirt trail. It was a bit soft in some spots because of the recently melted snow but overall a really nice easy trail for barefoot horses. There were no rocky patches like some of the other trails have. The trail winds through stands of cottonwood trees, up and down a few small hills past a small pond but it is mostly open area unprotected from the sun and wind. It winds around the outside of the Colorado horse park jumps. The trail leads to an underpass at hwy 83 however I choose to complete the loop back to the trailer. At a nice leisurely walk the entire loop took me a total of 2 hrs. I only encountered 2 other riders on the trail, both had ridden this trail a few times and told me they enjoyed everything about the trail.

This trail is a perfect short ride for warm spring days, early mornings or an overcast summer day.



BAYOU GULCH OPEN SPACE PLAN

HISTORY:

- Douglas County purchased 276 acres and acquired a restrictive covenant on 13 acres in 2000.
- The purchase created a buffer between the Pinery and the more rural areas to the south.
- The 276 acres was being used as a cross-country course by the High Prairie Farms Equestrian Center (later to become The Colorado Horse Park)
- It was understood that the horse park would continue their use of the property and manage the equestrian activities

HISTORY (CONTD)

- Douglas County reserved the right to construct a connector trail from Bayou Gulch Regional Park to the Cherry Creek Regional Trail, and to construct a perimeter trail; no trails have been constructed.
- The restrictive covenant on the 13-acre "homestead" parcel limits its permanent use to a living history museum, placement of historic structures, a parking lot, trailhead and restroom facilities.
- Colorado Horse Park Inc. (a non-profit corporation) took ownership of the High Prairie Farms property in 2004.



PROPOSED PLAN

- The Colorado Horse Park and Douglas County desire to enter into a license agreement to clarify the terms of use, management and maintenance, and public access, such that the equestrian events can continue while providing non-motorized access to the property for the public.
- The terms of the license agreement have been drafted and informally agreed to by both parties; public input is desired to finalize the agreement.



HIGHLIGHTS OF AGREEMENT

- Colorado Horse Park (CHP) will have primary control of the property, excluding trails, for their equestrian events and activities.
- Douglas County will have the right to construct a non-motorized trail connection to Cherry Creek Regional Trail and a perimeter trail for public access.
- The term of the agreement is 25 years.
- Any uses of the property by CHP other than equestrian must be approved by Douglas County.
- CHP will be responsible for maintenance of the Equestrian Area and improvements; the County will maintain the trails.

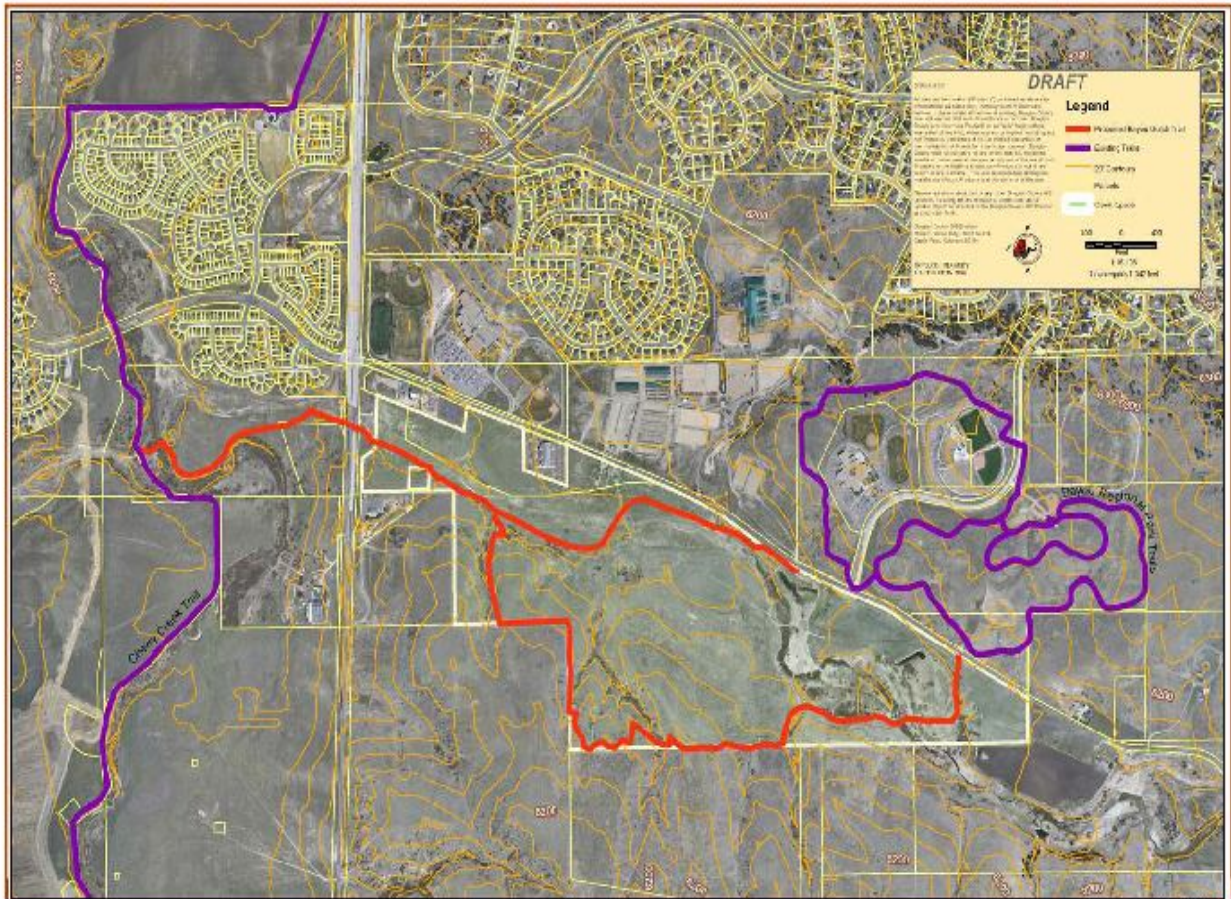


HIGHLIGHTS (CONTD)

- The County would like to retain the ability to conduct supervised educational activities in the Equestrian Area (i.e. environmental education for school groups)
- The license agreement could be assigned to another entity only upon prior written approval of the County.
- The connector trail will be open to the public at all times (1 hour before sunrise – 1 hour after sunset), even during CHP equestrian events.
- CHP may, at their discretion, close the perimeter trail during equestrian events up to a maximum of 36 days per year.

HIGHLIGHTS (CONTD)

- CHP will pay the County \$50/day for each day of closure of the perimeter trail.
- The public trails will be non-motorized multiple-use (CHP would prefer mountain bikes be limited to only the connector trail for safety reasons)
- Permitting is underway to construct the connector trail and bridge over Cherry Creek. Construction is likely to occur in spring 2008.
- The perimeter trail may be constructed in 2008, subject to budget constraints.



DOUGLAS COUNTY NEWS

A Search and Rescue Seminar was hosted in Douglas County at the Prairie Canyon Ranch. Board Member, Scott McEldowney, who is a ranger with the Parks and Recreation Department managed the entire event. It was held May 16, 17 and 18th. There were 50 equestrians in attendance including 20 Search and Rescue team members. Nine different jurisdictions across the front range of Colorado were represented.

Thank you Scott your continuing support of mounted search training.

.DECHC BOOTH AT THE ROCKY MOUNTAIN HORSE EXPO

On March 7th, 8th and 9th the Douglas-Elbert County Horse Council had a booth at the Rocky Mountain Horse Expo at the National Western Complex in Denver. We stood out, as we were the only County Horse Council Booth at the Expo and our booth was right next to the Colorado Horse Council. We saw lots of visitors and answered lots of questions about what we do. We passed out plenty of flyers on our upcoming Emergency Management Clinic and gave away a fair amount of Directories. We especially want to thank all the volunteers who helped man the booth during the Expo

TRAIL RIDE

COME JOIN US

The DECHC Annual Trail Ride will start at Dawson Butte to take advantage of the excellent parking and the scrub oak kitchen for the potluck, hotdog lunch afterwards. Ranger, Scott McEldowney, will guide us on an educational ride through an area west of the Keene Ranch Community, where Douglas County has been using the latest methods of fire mitigation and forest management. We will get first hand information about this modern process plus enjoy a very beautiful, seldom seen part of Douglas County. See the flyer in the newsletter and plan to join DECHC riders for a great day on Saturday, September 13, 2014.



Douglas - Elbert County Horse Council

5450 East Best Road ~ Larkspur, Colorado 80118

www.dechc.org

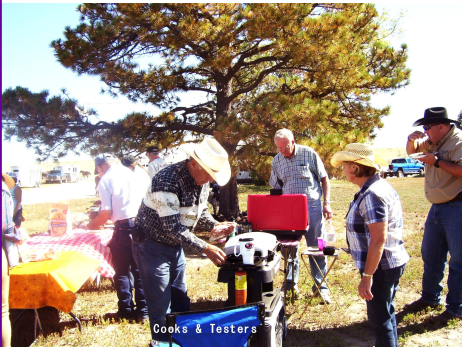
DECHC ANNUAL TRAIL RIDE

JOIN US for a Private Ranch Experience

SATURDAY, SEPTEMBER 13TH, 9:15 AM

This years DECHC Trail Ride will be on very private forested land west of the Keene Ranch. Ranger and Land Specialist Scott McEldowney will show riders the forest management and fire mitigation work being done in that area by Douglas County. You will see a part of Dawson Butte not open to the public including the forest behind Keene Ranch. Gorgeous !!!!!!!!!!! Come! Ride! Learn!

Hot dog lunch after in the "Scrub oak Kitchen" so bring potluck to share and a chair.



The cost of the ride for current DECHC members is \$10.00. Non-members will pay \$25 with \$15 being applied to a DECHC membership for the balance of 2014 and all of 2015. Must be a member to ride.

Please RSVP to Jan Wehrli 303-688-0553 or Tina Mavor 303-648-3905 by September 11th.

Park at Dawson Butte Trailhead, just past the Green Gate. Take the west frontage road south out of Castle Rock (or North from the Tomah Road Exit). Then west on Tomah Road to Dawson Butte Open Space.

***Douglas-Elbert
County Horse
Council***

Purpose

To provide an association of persons having a common interest in the promotion and improvement of the horse industry in Douglas and Elbert Counties; to provide disaster and emergency related horse rescue management and related education; to educate and report to the horse community regarding horse related land use, tax and legislative issues at the county level; to support and educate regarding trail safety, development and maintenance programs; to support and educate regarding open space issues; to develop and disseminate



horse related educational and safety information. To operate exclusively for the purposes set forth above and not for the benefit of any private individual.

Douglas-Elbert County Horse Council needs your support.

Please join us as a member TODAY

Individual/Family \$15.00 Yearly

For Individuals and Families wishing to Join for a year

Individual/Family Lifetime \$200.00

For Individuals and Families wishing to Join and pay a one time fee.

Organization \$50.00

For horse clubs wishing to join as a club

Commercial/Corporation \$75.00

For Businesses and Commercial Enterprises

Name _____

Address _____

City _____ State _____ Zip _____

Telephone (Home) _____ (Work) _____

(Fax) _____ (E-mail) _____

Club/Organization/Association:

Enclose this bottom

Douglas-Elbert County Horse Council

portion with your check

5450 East Best Road

and MAIL TO:

Larkspur, CO 80118

“Saddle Up” with the Elbert-Douglas County Livestock Association

“5th Annual “Ride With The Ranchers” Saturday, June 28, 2014

Registration/9 a.m. - Poker Ride 10 a.m. - Steak Lunch/1p.m.

**Adults - \$50 Riders under 12 - \$25 EDCLA members - \$35
Not riding? Please join us for Ribeye steak lunch & door prizes- \$25**

****Iced bottled water provided at Ride rest stops. Prizes for best, 2nd best and worst Poker hands. Poker Ride prizes & lots of great door prizes awarded during the Ribeye Steak luncheon.***

The “Ride With The Ranchers” is a relaxed, spacious trail ride with scenic views overlooking the expansive Bijou Basin hosted at Tom Conley’s J Open A working cattle ranch. Following the Ride, a complete Ribeye Steak lunch is served by the Ranchers. The event raises funds for EDCLA’s college scholarships awarded to Elbert and Douglas County students and numerous 4-H and other community projects for both counties.

To Register: Fill out form and make check payment to EDCLA. Mail by June 23, 2014 to: Peggy Roos, 44502 County Road 29, Elizabeth, CO 80107. Or, call Peggy Roos at (303) 646 2656 to register, to add additional riders or for information. Registration(s) and payment(s) also may be dropped off at: Powder River Custom Hats, 211 Main St., Elizabeth - Tues.-Sat. (303 646-6999), Elizabeth Country Corner Feed Store, 385 E. Grant St. Mon. - Sat. (303.646.3925) and Kiowa Country Corner Feed Store, 10240 Hwy 86 Mon. – Sun. (303.621.2466). Additional registration forms and information at www.EDCLA.net Rain Date: Sunday, June 29, 2014.

Directions to J Open A Ranch: Go east on Colorado Hwy 86 past Kiowa. Continue east to Freese Rd. (six miles past Kiowa) and turn right. Follow the signs – Ride directional signs will be posted on the road all the way to the J Open A Ranch beginning after you leave Kiowa.

\$55 Ride Special - Includes cost of \$50 poker ride, steak lunch, door prizes and a \$30 EDCLA annual membership. EDCLA membership includes a free summer Hamburger Fry for family and friends, a 5% annual discount at Elizabeth & Kiowa Country Corner Feed Stores and a dinner meal at the EDCLA annual meeting in November

Register Now: Fill out and make check payment to EDCLA. Mail by June 23, 2014 to: Peggy Roos, 44502 County Road 29, Elizabeth, CO 80107. Call Peggy at (303) 646-2656 to register, add additional riders or for information. Registration(s) and payment(s) also may be dropped off at: Powder River Custom Hats, 211 Main St., Elizabeth - Tues.-Sat. (303 646-6999), Elizabeth Country Corner Feed Store, 385 E. Grant St. Mon. - Sat. (303.646.3925) and Kiowa Country Corner Feed Store, 10240 Hwy 86 Mon. – Sun. (303.621.2466). Additional registration forms and information at www.EDCLA.net

Rain Date: Sunday, June 29, 2014/10 a.m.

\$55 Ride Special: Includes cost of Poker Ride, steak lunch, prizes and a \$30 EDCLA annual membership. Membership includes free summer Hamburger Fry for family/friends, 5% annual discount at Elizabeth & Kiowa County Corner Feed stores and a dinner at the EDCLA annual meeting in November.

Please print clearly, add payment made out to EDCLA and send to: Peggy Roos, 44502 County Road 29, Elizabeth, CO 80107. Please include email address and best phone number to reach you. Adults - \$50, Riders under 12 - \$25, EDCLA members - \$35. You can also just come for the great steak lunch & door prizes - \$25.

First Name
Last Name
City, State & State & Zip
Phone
Email
Total \$

First Name
Last Name
City, State & State & Zip
Phone
Email
Total \$

Become a member of The Elbert-Douglas County Livestock Association (EDCLA)—See Special Ride Offer -The EDCLA is one of Colorado's oldest cattlemen's associations (1875) and an affiliate of the Colorado Cattlemen's Association. Its more than 150 members play an active role in issues that affect Colorado's agricultural and livestock concerns, take pride in supporting community activities and provide college scholarships to Elbert/Douglas students with agriculture related majors. Members ride in the Elizabeth Stampede Parade/June, The Elbert County Fair Parade/August, host an annual free Hamburger Fry for its members, their families/friends. Members host the Beef BBQ at the Elbert County Fair where Colorado to 700 plus attendees. The Ride With The Ranchers, the Fair BBQ and a fall Beef Cow Symposium are the three fund raisers for its community projects and scholarships. The Board meets every second Tuesday at 7 p.m. and all EDCLA members/spouses are invited to attend.

Advertisement Charges

<u>Charges for each issue</u>	<u>Members</u>	<u>Non-Members</u>
Classified ads 50 words max	Free	\$10 per issue
Classified ads over 50 words, up to a quarter page	\$5	\$20 per issue
Half page	\$12	\$30 per issue
Full page	\$24	\$40 per issue
<u>Charges for one year (4 issues) for Commercial/Corporate Memberships</u>		
Business Card Size	\$30	\$60
Half Page	\$100	\$140
Full Page	\$160	\$200

Douglas B. Walker

Estate Preservations Services

Asset Protection for Seniors

4950 S. Yosemite

303-807-5426

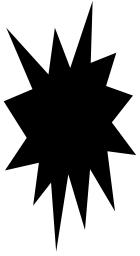
F2 PMB#138

Fax: 303-741-1912

Greenwood Village, CO 90111

d_b_walker@msn.com

Please remember to visit & contribute to our website and Newsletter



<http://dechc.org>

Next meeting: Monday, June 2, 2014 at 7:15 P.M.

At the Franktown Firehouse

HORSEPOWER



2012 - 2016

**DECHC Directory of Equine-Related
Businesses and Services**

for Douglas and Elbert Counties, Colorado



Douglas - Elbert County Horse Council



Douglas-Elbert County Horse Council

ACCOMPLISHMENTS

[Http://dechc.org](http://dechc.org)

2001 – 2014

- Established communication with Sheriffs Office and Douglas & Elbert County Fairgrounds for Equine Emergency Evacuations. Received and took care of over 500 equine during the Hayman Fire.
- Compiled a list of items needed for equine care for equine emergency evacuations.
- Compiled and maintain a list of volunteers for equine emergencies.
- Participated in County Animal Response Team (CART) training sessions for Equine Emergency Evacuations.
- DECHC is an active, participating member of the Douglas County Animal Response Rescue Team (CART)
- We network with other counties about their equine emergency programs.
- Received and took care of the equine during the 2011 Burning Tree Fire at the Douglas County Fairgrounds. 127 horses, 1 burro and 2 goats.
- Helped to establish "Share the Trail" Guidelines
- Distributed "Share the Trail" information
- Purchased and installed plastic holders for "Share the Trail" leaflets at trailheads.
- Print and distribute DECHC information.
- Distributed Poisonous Weed Information Flyer
- Support "Right-of-Way" signs on Douglas County Open Space Trails
- Distribute information about trail courtesy, etiquette and trail sharing.
- Provide education about equine safety.
- Participate in the Parker Christmas Parade, Douglas County Fair Parade and Elbert County Fair Parade.
- Have a booth annually at Douglas County Fair.
- Publish a quarterly Douglas-Elbert County Horse Council Newsletter.
- Distribute information on equine issues in Douglas and Elbert Counties: Land, Acreage Requirements, Water and Trails.
- Distributed educational information on the Horse Slaughter Issue, Equine License Plates, Colorado Brand Board, CHDA, CDOT requirements for trucks and trailers and changes in fuel requirements for older trucks,
- Participated in the Colorado Horse Council Booth at the Rocky Mountain Horse Expo
- Reprint information from the Colorado Horse Council on State Equine Issues.
- Inform members about Douglas and Elbert County Open Space Issues.

DECHC ACCOMPLISHMENTS (CONTINUED)

Presentations about Emergency Preparedness to various Horse Organizations & Home Owner Associations.

- We hold monthly board meetings to which members are welcome.
 - Participated in Douglas County Fairground arenas open use for riders.
 - Greenland Open Space Trail Course Members Appreciation Invitational BBQ and Fun Day Clean Up and Repair Trail Course

 - We hold an annual Douglas-Elbert County Horse Council trail ride fundraiser and membership drive.
 - Guest speakers for Special Membership Events
 - Steve Matthews and Steve Deitemeyer – Trail Horse Outfitting
 - Dr. Marvin Beeman, Littleton Large Animal Hospital
 - Brian Kitchen (Executive Director), Laura Locke & Danny Williams (Lobbyists) for the Colorado Horse Council and the Colorado Horse Development Authority
 - Jerry Koch, Water 101
 - Jonathian Rife, Douglas County Weed Specialist, Noxious Weed Presentation
 - Rick Wahlert, Asst. Brand Commissioner, Brand Inspection
 - Sponsored the Colorado Horsemen's Town Meeting with the Colorado Horse Council in November 2011.
 - Published the Directory of Equine Information and Services in Douglas and Elbert Counties
 - Held Emergency Preparedness Clinic in May 2012 at the Douglas County Fairgrounds
 - Emergency Evacuations. Helped evacuate horses from the Elbert County 10221 Fire.
 - Emergency Evacuations. Received and took care of equine during the Waldo Canyon Fire.
 - Sponsored the Colorado Horsemen's Town Meeting with the Colorado Horse Council in November 2012.
 - Had a Douglas-Elbert County Horse Council booth in the Rocky Mountain Horse Expo in March 2013
 - Held Emergency Preparedness Clinic in April 2013 at the Elbert County Fairgrounds.
 - Emergency Evacuations. Received and took care of large animals during the Black Forest Fire.
 - Put up booth at the C.A.L.F. Fall Harvest
 - Held annual Educational Trail Ride at Greenland Open Space
 - Provided Trail Signage for the new Lincoln Mountain Open Space in Douglas County.
 - Emergency Evacuations. Received and took care of large animals during the Northern Colorado Floods at the Douglas County Fairgrounds.
 - Sponsored the Colorado Horsemen's Town Meeting with the Colorado Horse Council in November 2013.
- Held Emergency Preparedness Clinic and Trailer Loading Training in April 2014 at Douglas County Fair Grounds.